

Supporting information

Contents.

Figure S1. (a) The LC/MS of positive leek samples with DMM. (b) The mass spectrum of negative leek samples.

Figure S2. (a) The LC/MS of DMM. (b) The mass spectrum of DMM-NH₂. (c) The ¹H NMR of DMM-NH₂.

Figure S3. The specificity test of ICA strip.(1: 0.01 M PBS; 2:100 ng/mL DMM; 3:100 100 ng/mL Pyrimorph; 4: 100 ng/mL Fenpropimorph; 5: 100 ng/mL Flumorph; 6: 100 ng/mL Dodemorph)

Table S1. The cross-reactivity of DMM mAb with structural analogs.

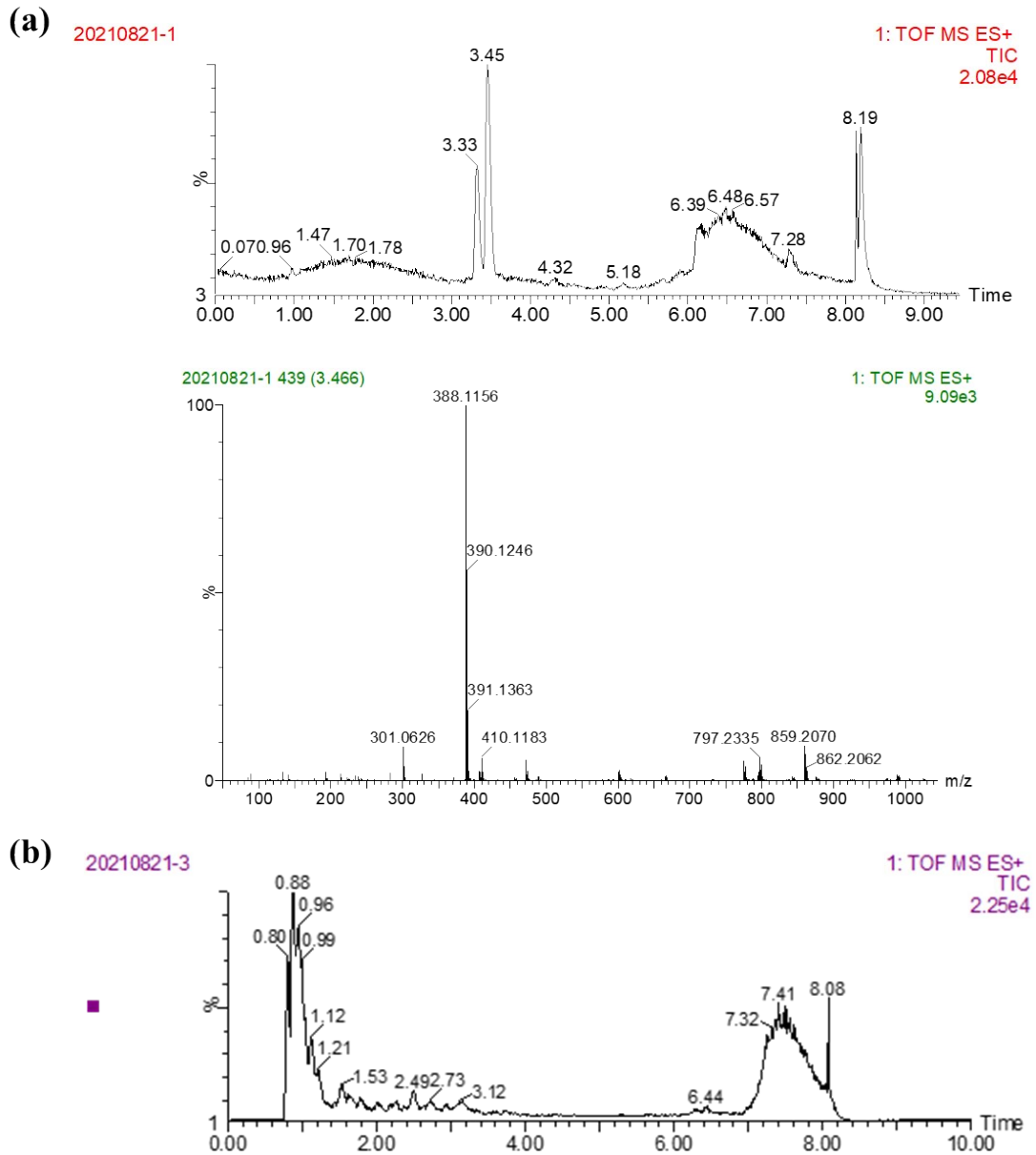
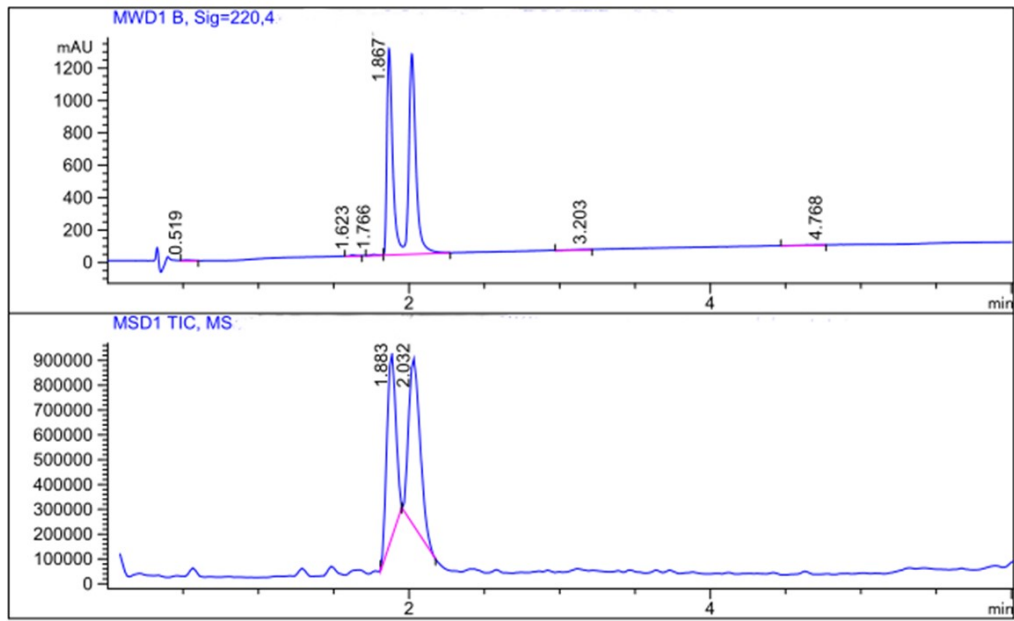
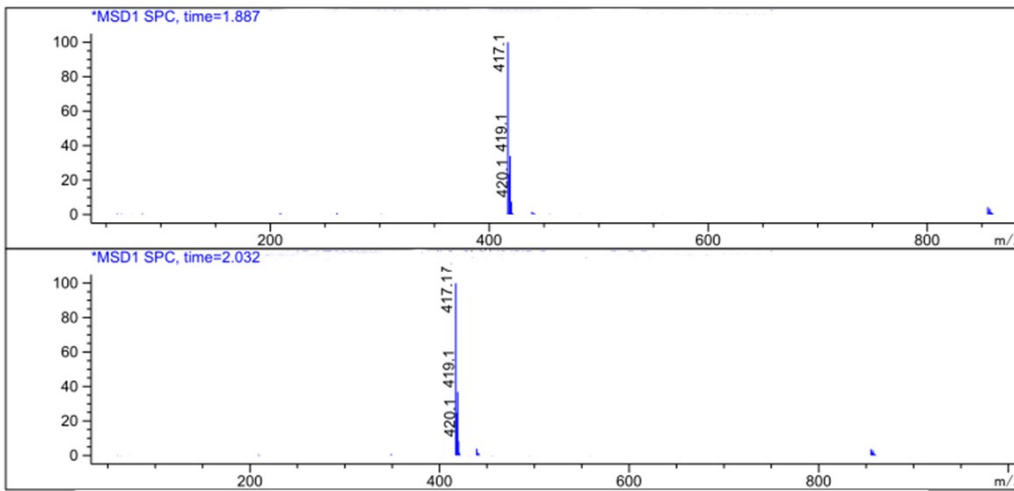


Figure S1. (a) The LC/MS of positive leek samples with DMM. (b) The mass spectrum of negative leek samples.

(a)



(b)



(c)

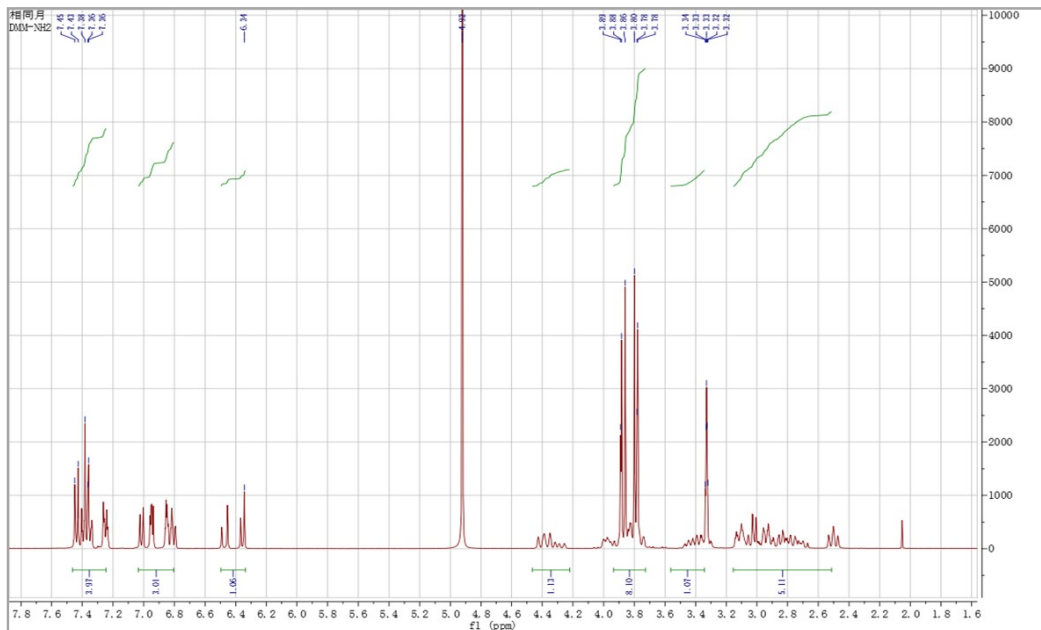


Figure S2. (a) The LC/MS of DMM. (b) The mass spectrum of DMM-NH₂. (c) The ¹H NMR of DMM-NH₂.

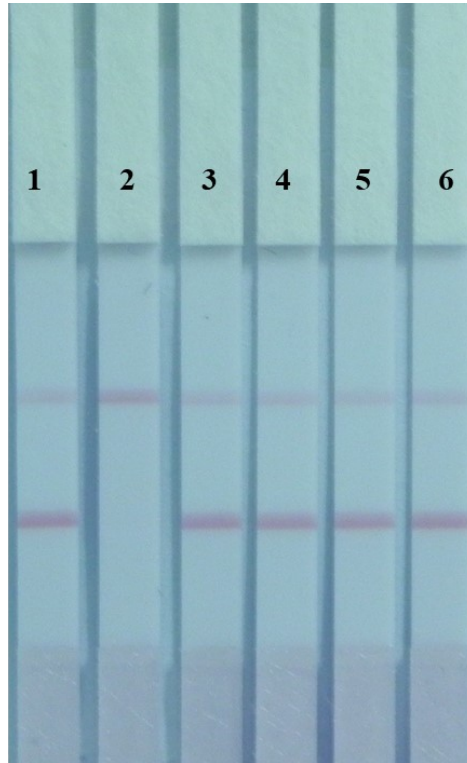
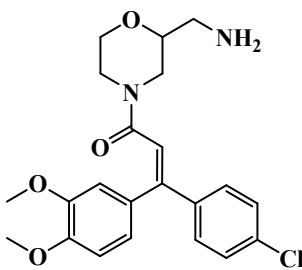
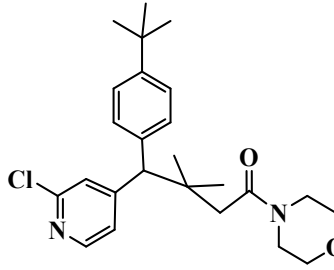
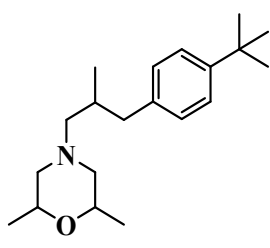
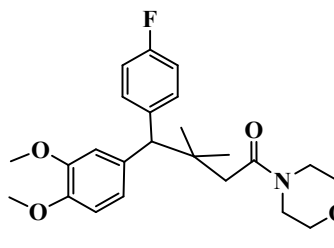
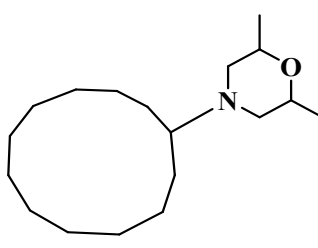


Figure S3. The specificity test of ICA strip.(1: 0.01 M PBS; 2:100 ng/mL DMM; 3:100 ng/mL Pyrimorph; 4: 100 ng/mL Fenpropimorph; 5: 100 ng/mL Flumorph; 6: 100 ng/mL Dodemorph)

Table S1. The cross-reactivity of DMM mAb with structural analogs.

Analogs	Structure	IC ₅₀ (ng/mL)	CR ^a (%)
Dimethomorph		2	100.00
Pyrimorph		100	2
Fenpropimorph		200	1
Flumorph		80	2.5
Dodemorph		>1000	<0.3

^a Cross reactivity is expressed as the percentage of DMM IC₅₀ (ng/mL) divided by its structural analog IC₅₀ (ng/mL).