

Electronic Supplementary Information

Hybrid monometallic and bimetallic copper-palladium zeolite catalysts for direct synthesis of dimethyl ether from CO₂

*Sara Navarro-Jaén, Mirella Virginie, Jean-Charles Morin, Joëlle Thuriot-Roukos,
Robert Wojcieszak and Andrei Y. Khodakov**

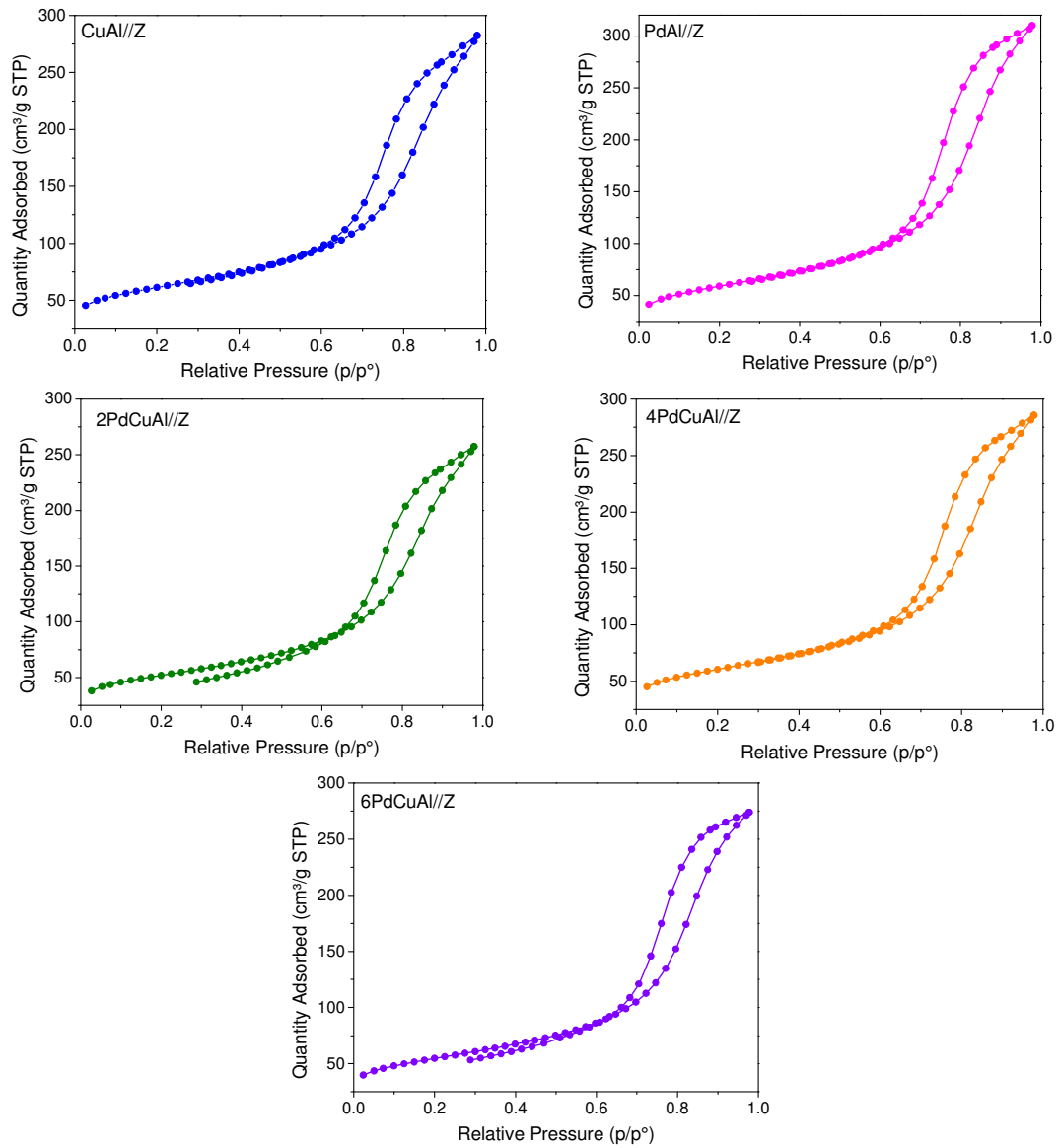


Fig. S1. Nitrogen adsorption isotherms over monometallic and bimetallic hybrid catalysts

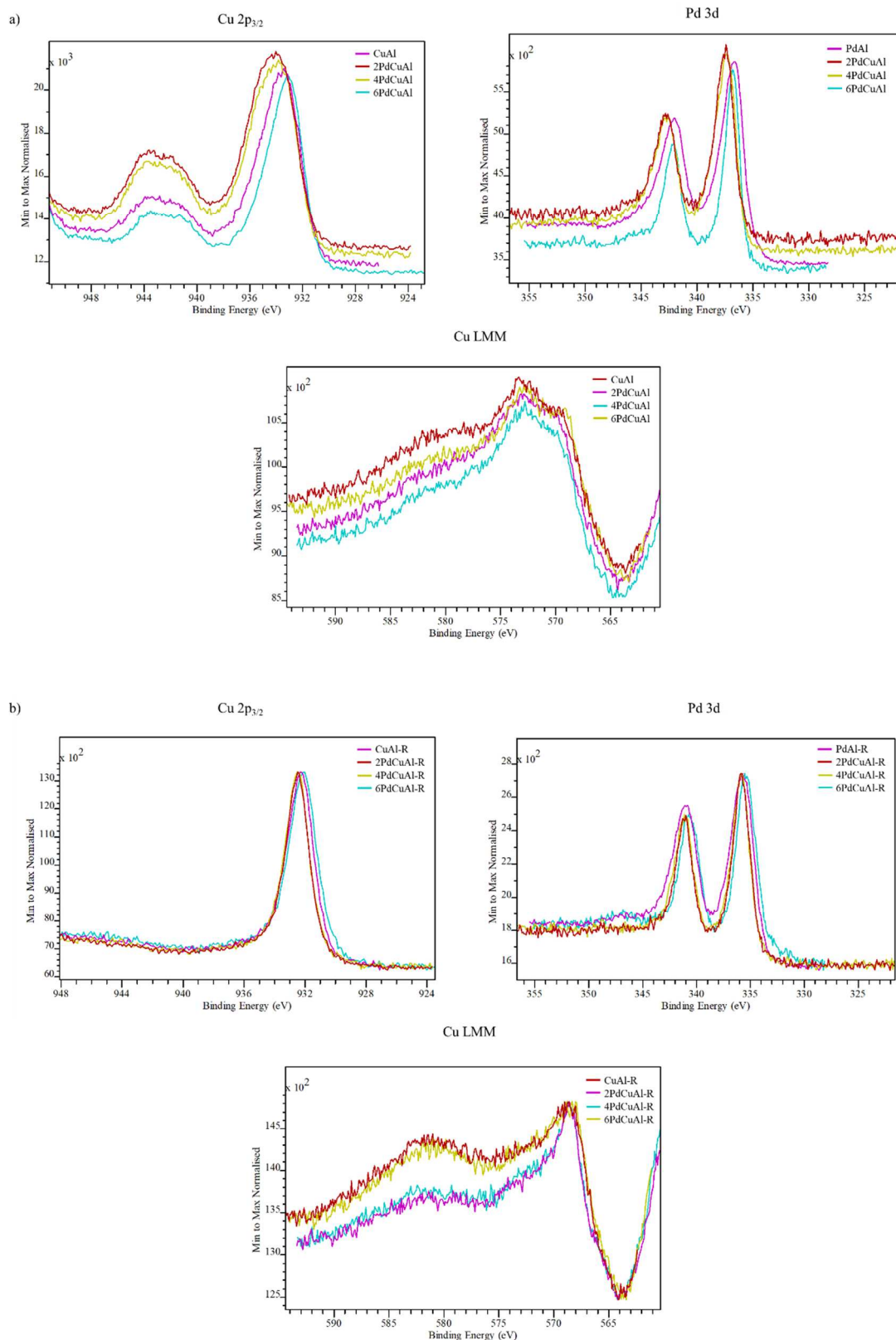


Fig. S2. Cu 2p_{3/2}, Pd 3d and Cu LMM levels XPS normalized spectra of the CuAl, PdAl, 2PdCuAl, 4PdCuAl and 6PdCuAl catalysts before (a) and after (b) reduction treatment under H₂ at 350 °C.

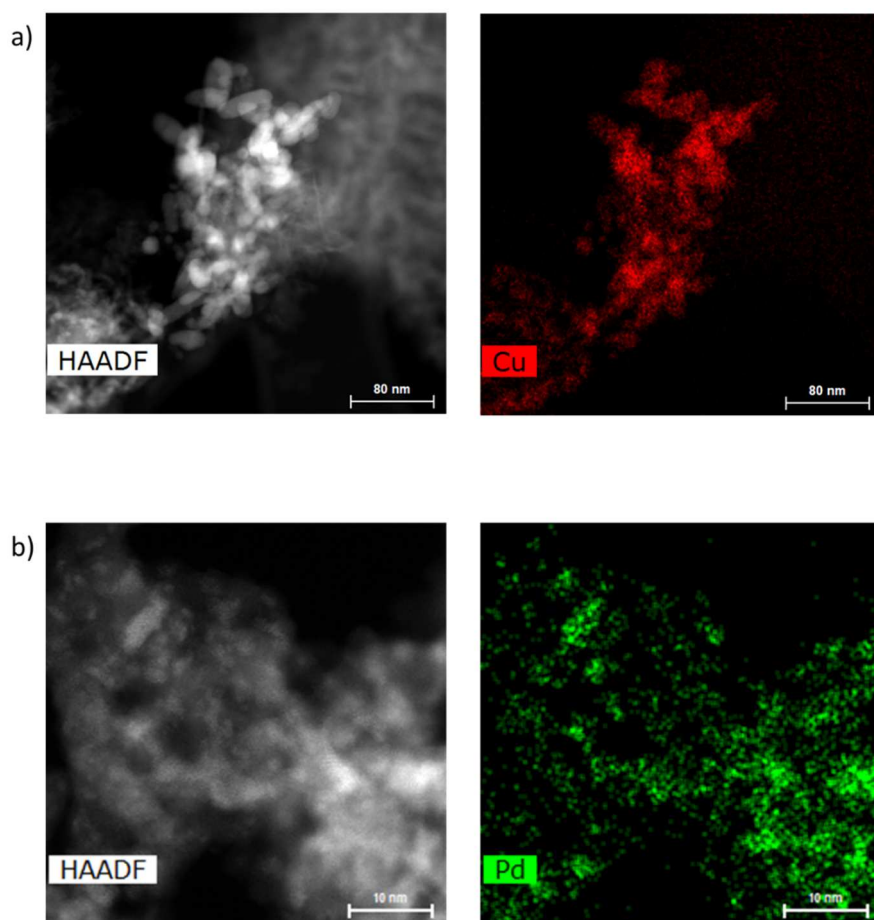


Fig. S3. HAADF-STEM micrographs and EDS mapping of the reduced monometallic catalysts: a) CuAl, b) PdAl.