

## Supporting Information

### **A co-delivery nanoplatform for Lignan-derived compound and perfluorocarbon tuning IL-25 secretion and oxygen level in tumor microenvironments for meliorative tumor radiotherapy**

Zhenyu Duan,<sup>a</sup> Qiang Luo,<sup>a</sup> Lei Gu,<sup>a</sup> Xiaoling Li,<sup>a</sup> Hongyan Zhu,<sup>a, \*</sup> Zhongwei Gu,<sup>a</sup>  
Qiyong Gong,<sup>a, b</sup> Hu Zhang,<sup>c</sup> Kui Luo<sup>a, b, \*</sup>

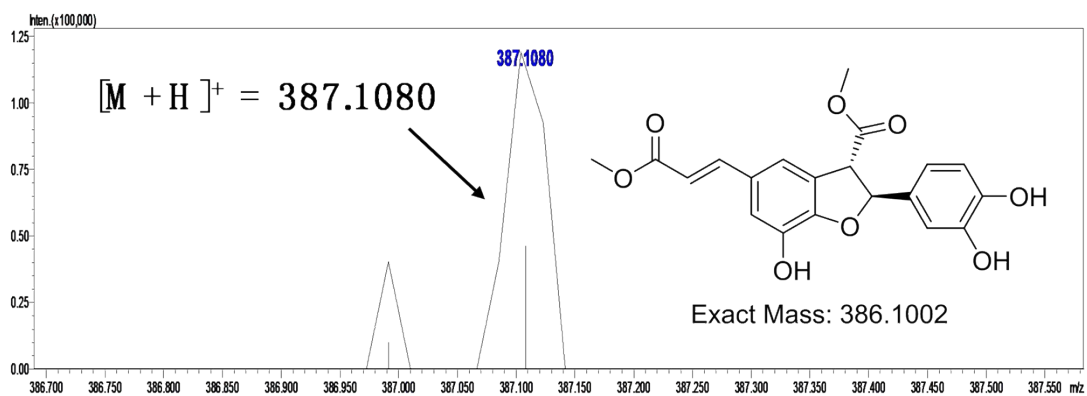
<sup>a</sup> Laboratory of Stem Cell Biology, and Huaxi MR Research Center (HMRRC), Department of Radiology, National Clinical Research Center for Geriatrics, West China Hospital, Sichuan University, Chengdu 610041, China

<sup>b</sup> Research Unit of Psychoradiology, Chinese Academy of Medical Sciences, and Functional and molecular imaging Key Laboratory of Sichuan Province, Chengdu, 610041, China

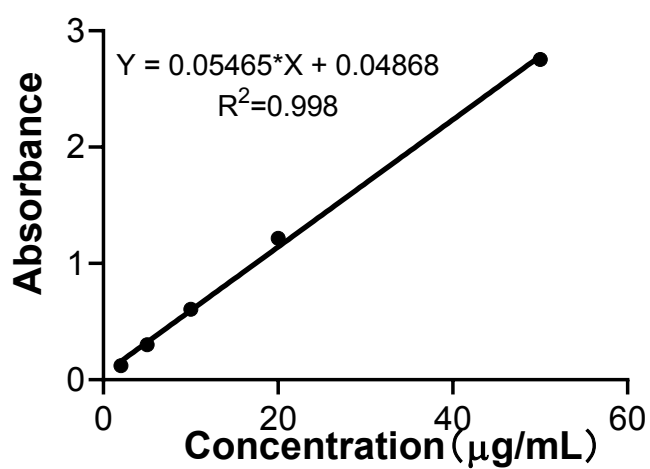
<sup>c</sup> Amgen Bioprocessing Centre, Keck Graduate Institute, Claremont, CA 91711, USA

\*Corresponding authors.

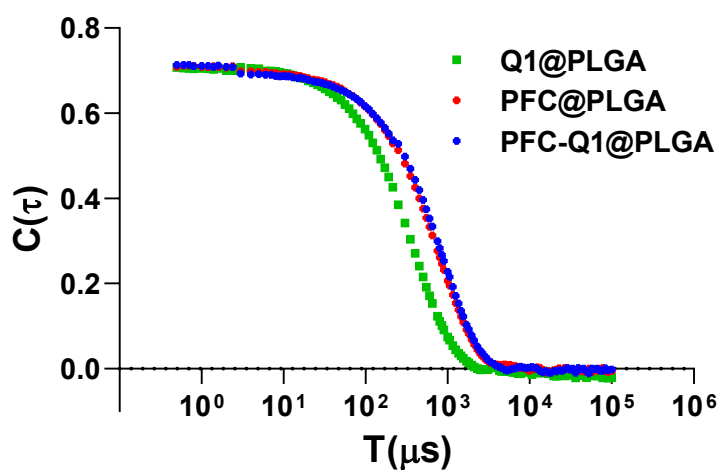
E-mail: [luokui@scu.edu.cn](mailto:luokui@scu.edu.cn) (Prof. Luo); [hyzhu\\_hmrrc@126.com](mailto:hyzhu_hmrrc@126.com) (Prof. Zhu)



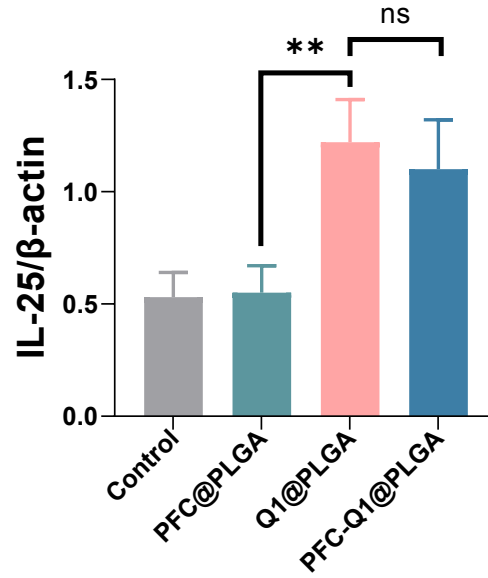
**Figure S1.** HRMS of compound Q1,  $m/z = 387.1080$   $[M + H]^+$ .



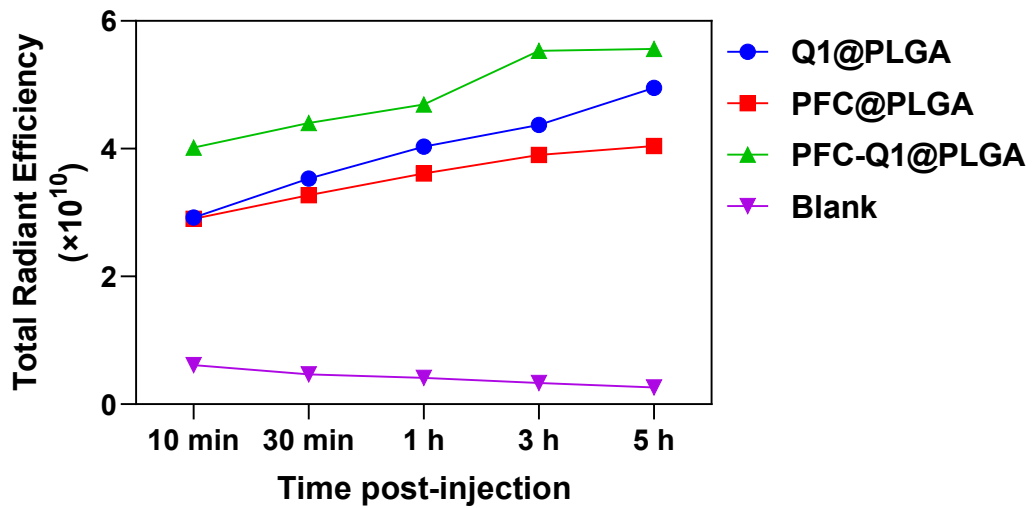
**Figure S2.** The standard curve of Q1 from UV spectra for drug loading calculation.



**Figure S3.** The correlation curve for size of three nanoparticles.



**Figure S4.** Semi-quantitative analysis results of western blot (<sup>ns</sup>  $p > 0.05$ , <sup>\*\*</sup>  $p < 0.01$ ).



**Figure S5.** Semi-quantitative analysis results of fluorescence intensity in tumors after different treatments.