

*Supplementary Information for:*

## **Probe Heterogeneity in Neuroblastoma Cells via Nanopillar-guided Subnuclear Irregularities**

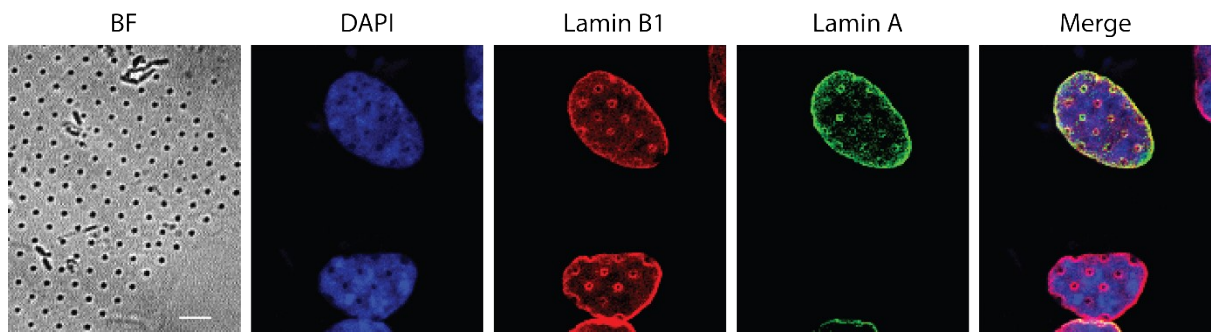
Yongpeng Zeng<sup>1</sup>, Ramani Priya Dharshana<sup>1</sup>, Weibo Gao<sup>2,3</sup>, Wenting Zhao<sup>1\*</sup>

<sup>1</sup>School of Chemical and Biomedical Engineering, Nanyang Technological University, Singapore 637457, Singapore

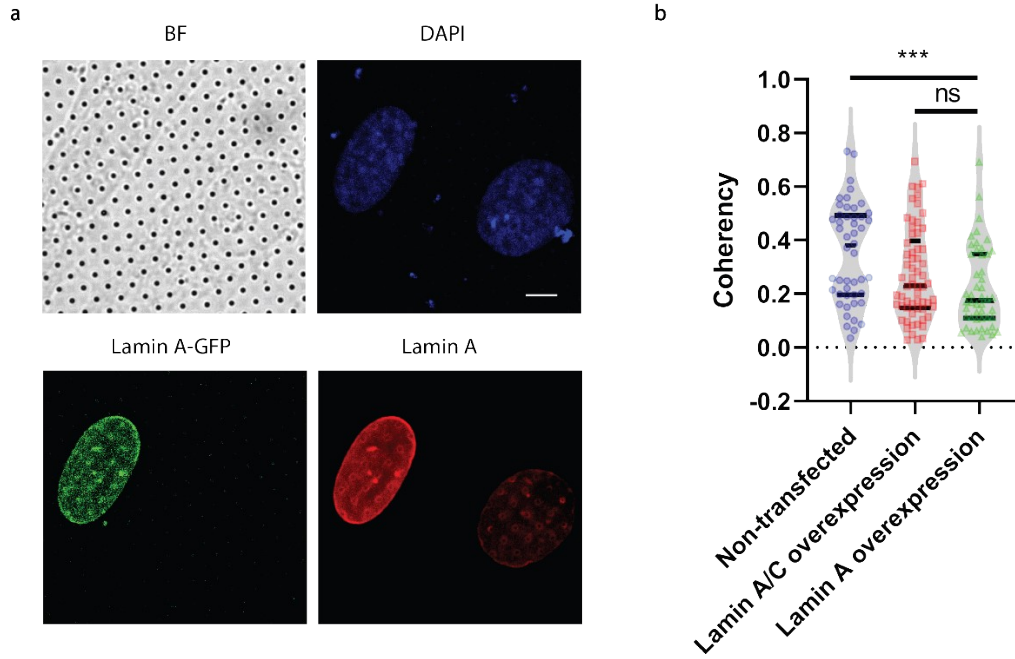
<sup>2</sup>Division of Physics and Applied Physics, School of Physical and Mathematical Sciences, Nanyang Technological University, 639798 Singapore, Singapore

<sup>3</sup>The Photonics Institute and Centre for Disruptive Photonic Technologies, Nanyang Technological University, 639798 Singapore, Singapore

\*Corresponding Authors: [wzhao@ntu.edu.sg](mailto:wzhao@ntu.edu.sg)



**Figure S1. Example showing ring-like deformations have also been observed in some high lamin A SK-N-SH cells. Scale bar, 5  $\mu$ m.**



**Figure S2. Impact of lamin A overexpression on nanopillar-guided subnuclear irregularities.** **a)** Representative images showing that cell with overexpressed lamin A-GFP signal exhibits typical ring-like deformations that are mostly found in non-transfected low lamin A cells. **b)** Coherency measurement showing that lamin A overexpression cause similar effect on nanopillar-guided subnuclear irregularities as lamin A/C overexpression. Scale bar, 5  $\mu$ m.

**List of supplementary movies:**

**Movie S1. Overnight cell migration in wound healing assay.** Scale bar, 100  $\mu\text{m}$ .

**Movie S2. Overnight cell migration of non-transfected and lamin A/C transfected cells.** Scale bar, 200  $\mu\text{m}$ .