

SUPPORTING INFORMATION

pH-responsive Doxorubicin Delivery using Shear-Thinning Biomaterials for Localized Melanoma Treatment

Junmin Lee,^{a,b,c,d} Yonggang Wang,^{c,d,e} Chengbin Xue,^{c,d,f,g} Yi Chen,^{c,d,h} Moyuan Qu,^{c,d} Jai Thakor,^{c,d} Xingwu Zhou,^{c,d} Natan Roberto de Barros,^a Natashya Falcone,^a Patric Young,^a Floor W. van den Dolder,^{c,d} Kangju Lee,^{a,c,d,i} Yangzhi Zhu,^a Hyun-Jong Cho,^{c,d,j} Wujin Sun,^{a,c,d} Bo Zhao,^h Samad Ahadian,^{a,c,d} Vadim Jucaud,^a Mehmet R. Dokmeci,^{a,c,d} Ali Khademhosseini^{*a,c,d} and Han-Jun Kim^{*a,c,d}

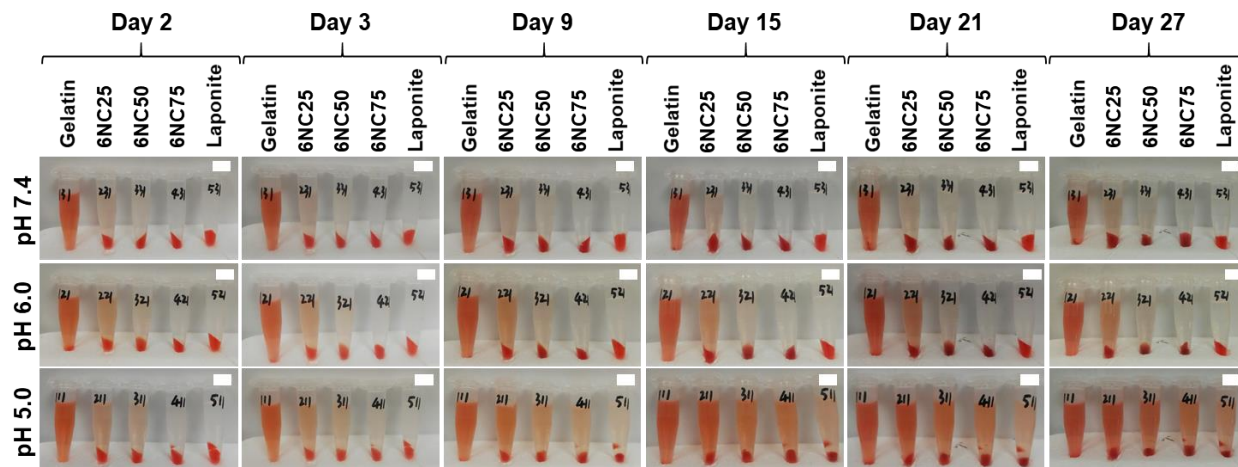
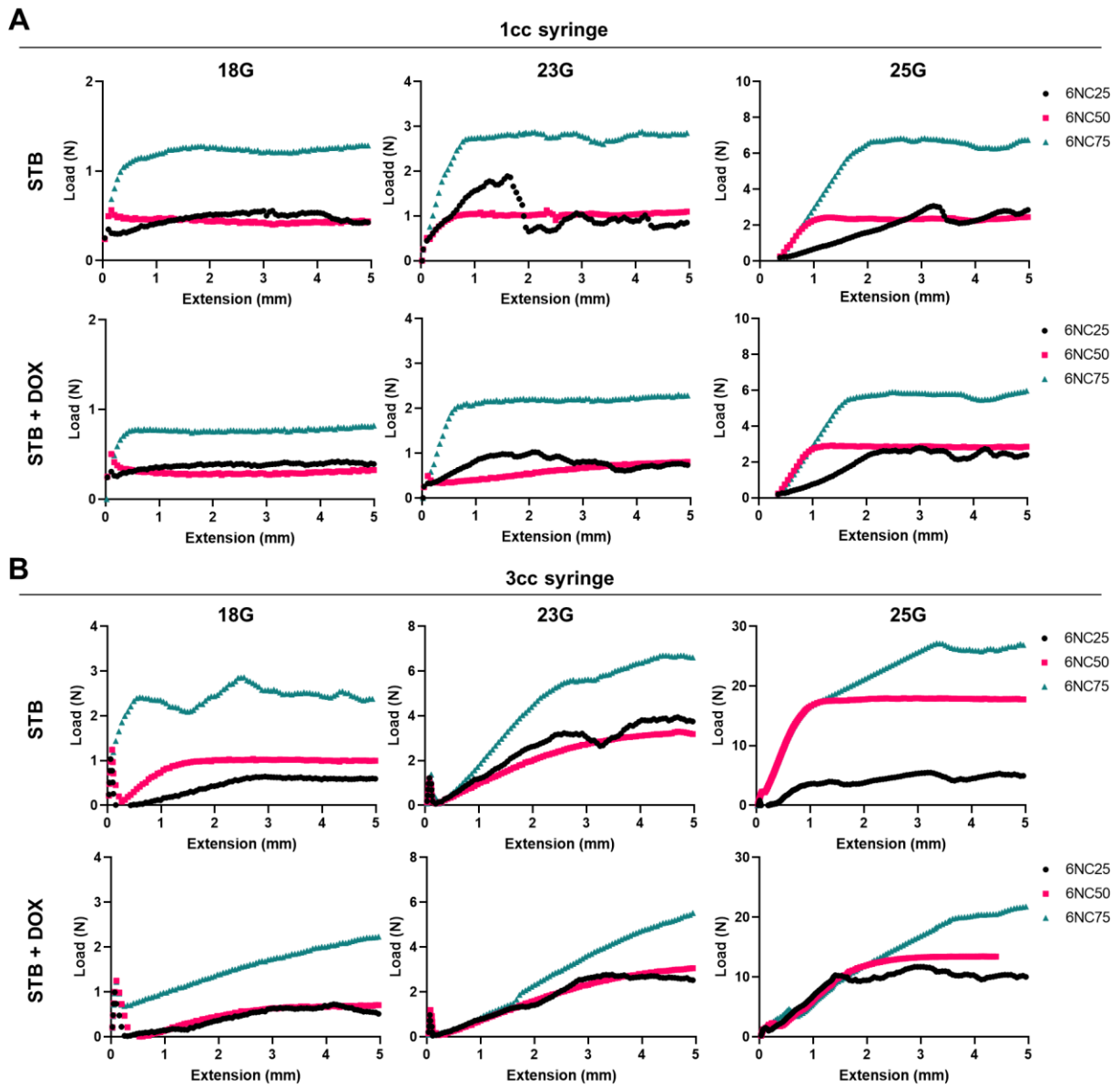


Fig. S1. Representative images of biomaterials with different compositions between gelatin and Laponite showing DOX release at pH 7.4, 6.0, and 5.0 for 30 days. Scale bar is 1 cm.



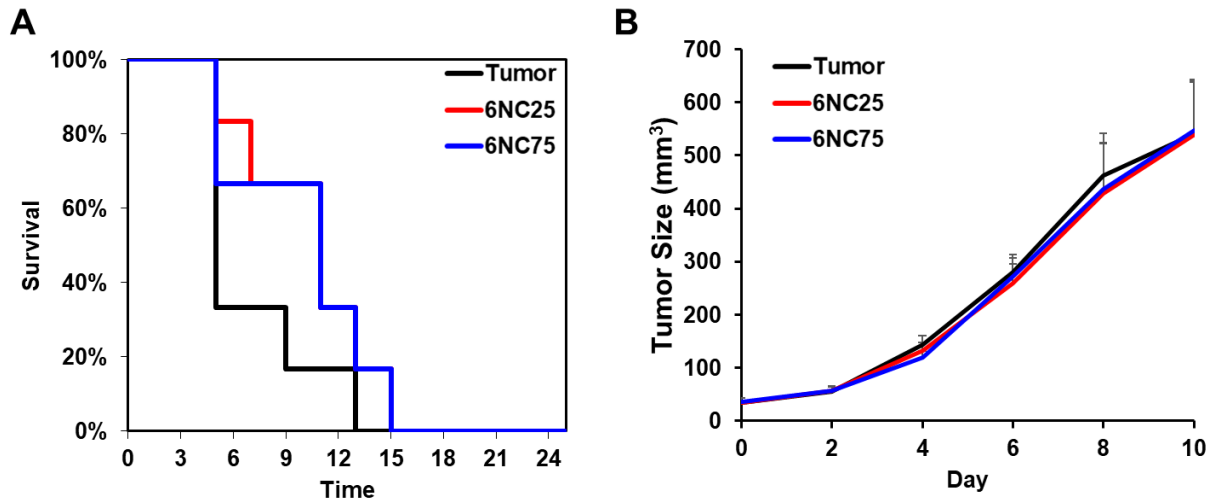


Fig. S3. (A) Kaplan-Meier survival analysis of STBs (6NC25, 6NC75) without DOX. (B) Tumor growth curve of STBs (6NC25, 6NC75) without DOX. There were no significant differences between STB-injected groups and Tumor-only groups.

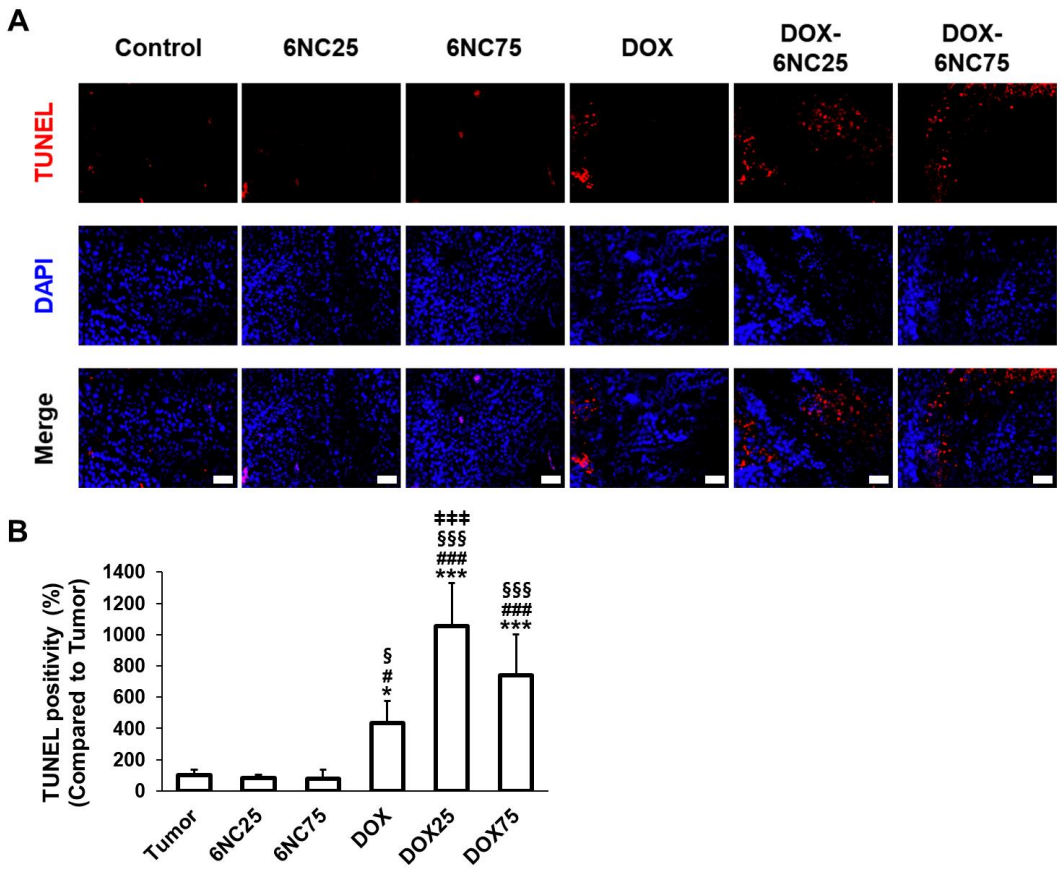


Fig. S4. (A) Representative immunofluorescence images of excised tumor tissues stained for DAPI (Blue) and TUNEL (Red) across the conditions. (B) The average percentage of cells positively expressing TUNEL. Scale bar is 50 μ m. *, compared to Tumor, #, compared to 6NC25, §, compared to 6NC75, ‡, compared to DOX. * $p < 0.05$, ** $p < 0.01$, *** $p < 0.001$, ANOVA. Error bars are standard deviations.