

Supporting Information

Hydrogel-mediated Topical Delivery of Steroids Can Effectively Alleviate Psoriasis via Attenuating the Autoimmune Responses.

Kajal Rana,¹ Trishna Pani,² Somesh Kumar Jha,¹ Devashish Mehta,² Poonam Yadav,¹ Dolly Jain,¹ Manas Kumar Pradhan,³ Sarita Mishra,⁴ Raunak Kar,⁵ Betsy Reshma G,⁴ Aasheesh Srivastava,³ Ujjaini Dasgupta,² Veena S. Patil,^{5,*} and Avinash Bajaj^{1,*}

1. Laboratory of Nanotechnology and Chemical Biology, Regional Centre for Biotechnology, NCR Biotech Science Cluster, 3rd Milestone, Faridabad-Gurgaon Expressway, Faridabad-121001, Haryana, India.

2. Amity Institute of Integrative Sciences and Health, Amity University Haryana, Panchgaon, Manesar, Gurgaon-122413, Haryana, India.

3. Department of Chemistry, Indian Institute of Science Education and Research, Bhauri, Bhopal By-pass Road, Bhopal-462066, India.

4. CSIR- Institute of Genomics and Integrative Biology, South Campus, Mathura Road, Near to Sukhdev Vihar, New Delhi, Delhi 110025, India.

5. National Institute of Immunology, Aruna Asaf Ali Marg, New Delhi-110067.

Corresponding authors:

* Veena S. Patil, Email: veena@nii.ac.in

*Avinash Bajaj, Email: bajaj@rcb.res.in

Effect of Dexamethasone entrapped Gel (DEX-Gel) in Chronic Inflammation Model

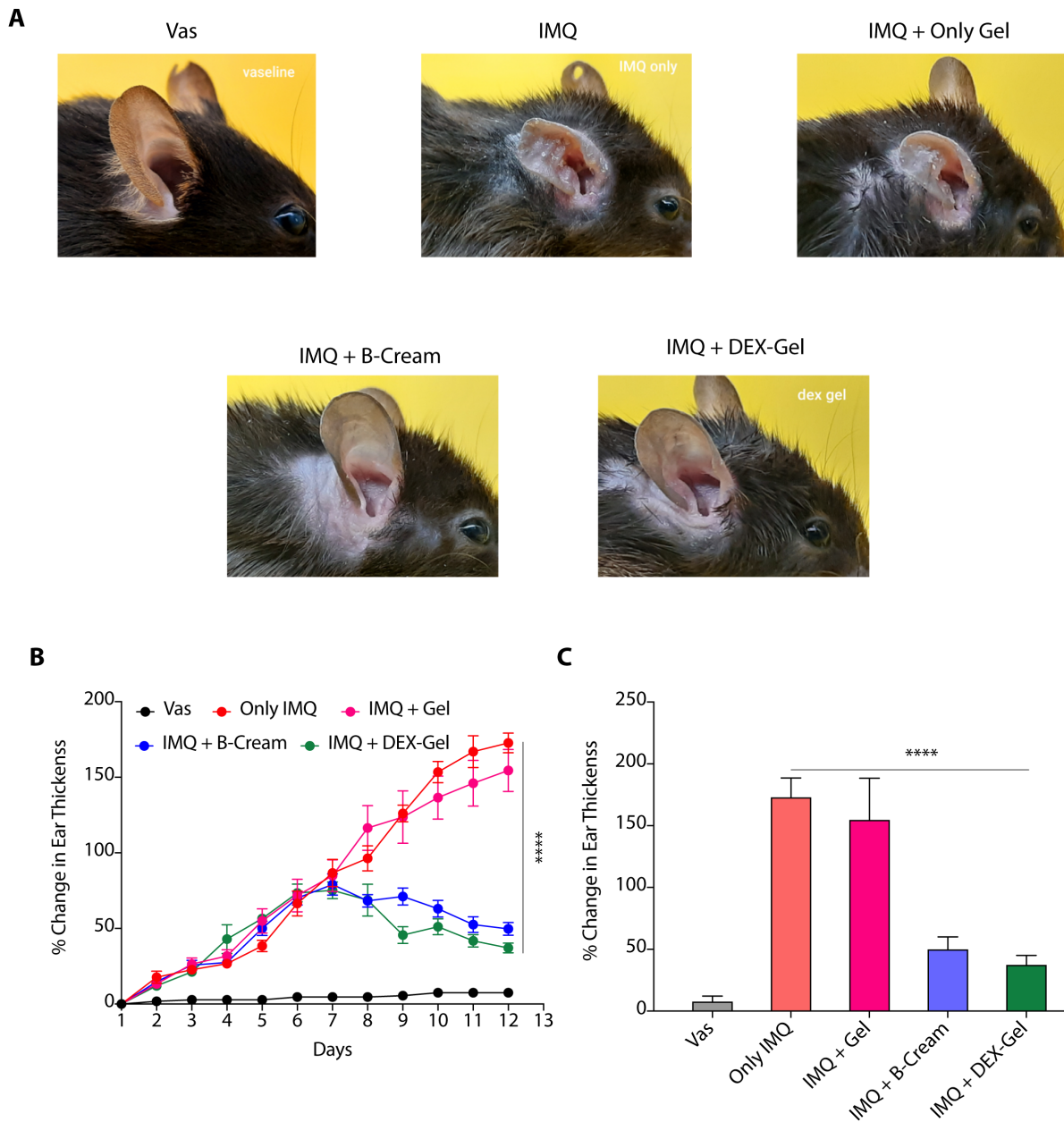


Figure S1. (A) Representative digital images of the mice ear upon different treatments for testing the efficacy of DEX-Gel in chronic IMQ psoriasis model. **(B, C)** Change in kinetics of ear thickness **(B)** and percentage change in ear thickness **(C)** of mice at day 12 on different treatments.

Effect of Dexamethasone entrapped Gel (DEX-Gel) in Chronic Inflammation Model

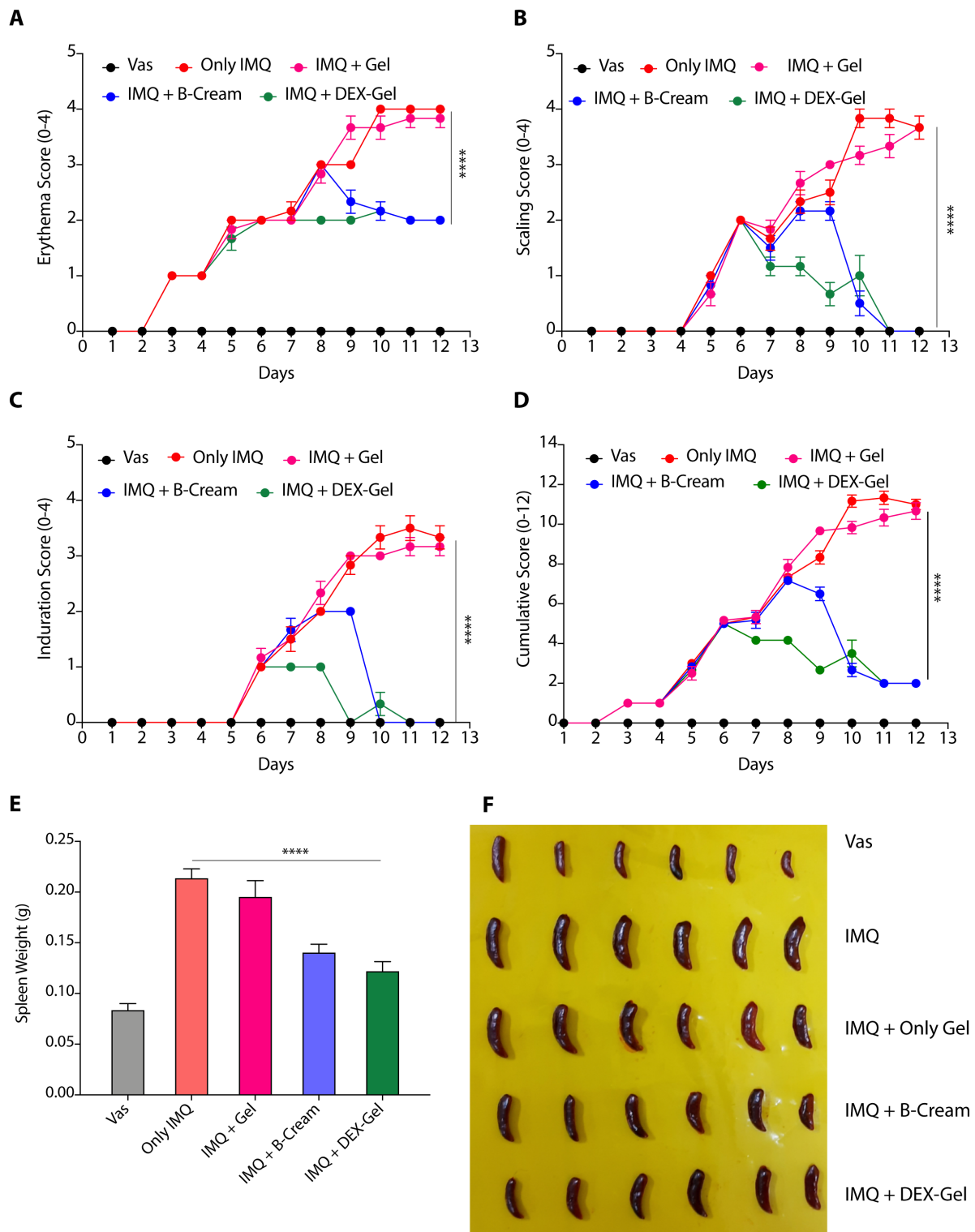


Figure S2. (A-D) Change in clinical score of erythema (A), induration (B), scaling (C), and cumulative PASI score (D) for disease severity on different treatments for testing the efficacy of DEX-Gel in chronic IMQ psoriasis model. (E, F) Change in weight of the spleen on different treatments (D), and pictures of spleen (E) excised at day 12.

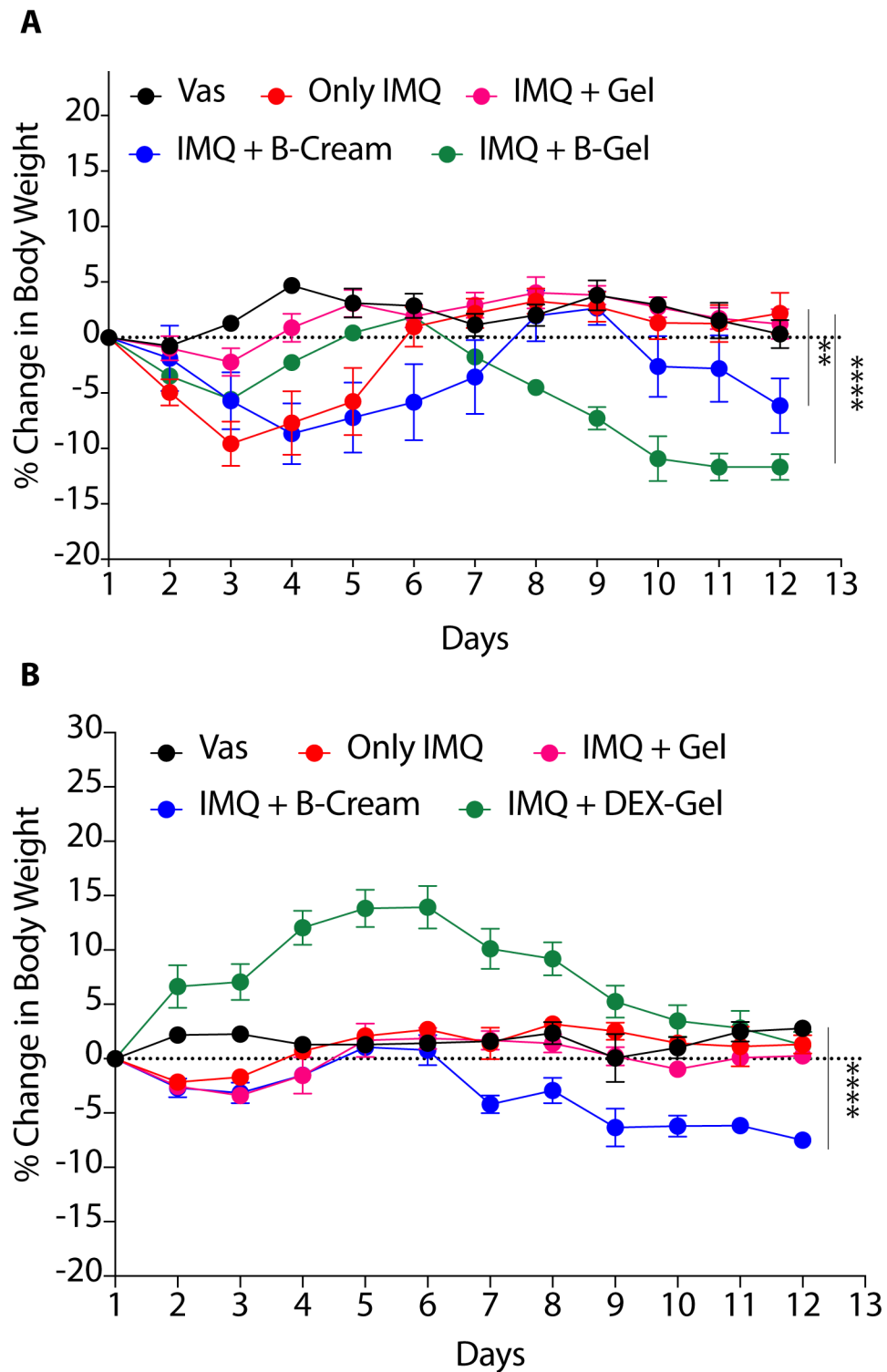


Figure S3. Percentage change in body weight of mice on different treatment in chronic psoriasis model for testing efficacy of B-Gel (A) and DEX-Gel (B).

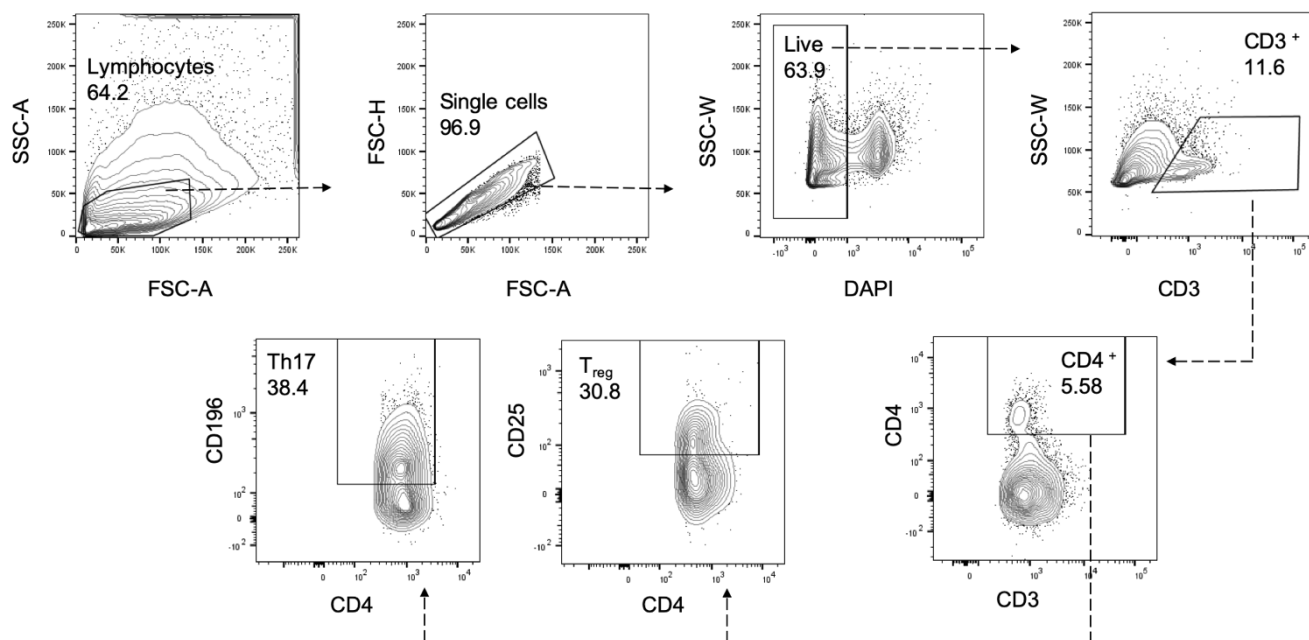


Figure S4. Gating strategy used for analysis of different CD4 T helper cell subsets.

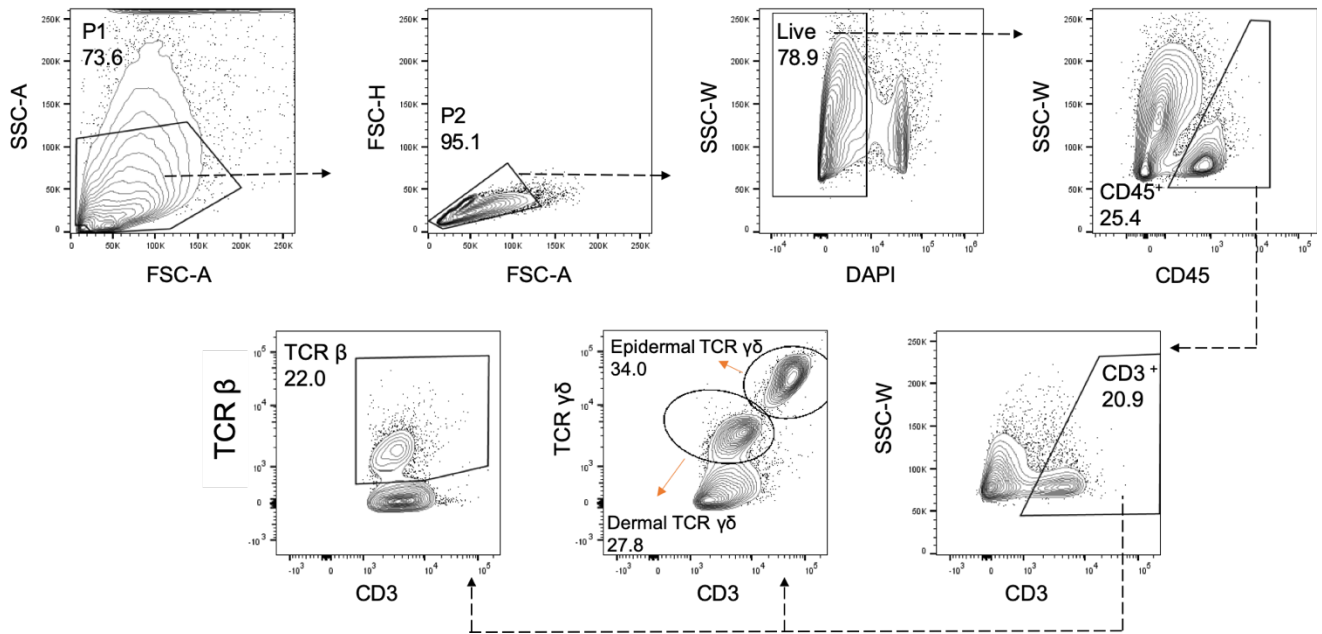


Figure S5. Gating strategy used for analysis of different TCR $\gamma\delta$ cells

Table S1. Sequences of the Primers used in the study.

M_IL1b_RT_FP	CGA CAA AAT ACC TGT GGC CT
M_IL1b_RT_RP	GGA TCC ACA CTC TCC AGC T
M_TNF α _RT_FP	GCC TAT GTC TCA GCC TCT TC
M_TNF α _RT_RP	CAT TTG GGA ACT TCT CAT CCC
M_CRAMP_RT_FP	GCT GTA ACG AGC CTG GTG C
M_CRAMP_RT_RP	CTA CTA CTC TGG CTG AGG TAC
M_IL17a_RT_FP	CTG TGT CTC TGA TGC TGT TG
M_IL17a_RT_RP	CGC CAA GGG AGT TAA AGA C
M_IL17f_RT_FP	GGATTACAACATCACTCGAG
M_IL17f_RT_RP	CAGGATTTCTTGCTGAATGG
M_K16_RT_FP	GAACCATGAGGAGGAGATGCTTG
M_K16_RT_RP	GATTAGATCACTGTTAGAGGCCA