

## Supporting Information

### Enantioselective organocatalytic vinylogous aldol–cyclization cascade reaction of 3-alkylidene oxindoles with *o*-quinones

Yun-Jie Tsou, Ren-You Guan and Jeng-Liang Han\*

Department of Chemistry, National Chung-Hsing University, Taichung City, Taiwan 420

[jlhan@nchu.edu.tw](mailto:jlhan@nchu.edu.tw)

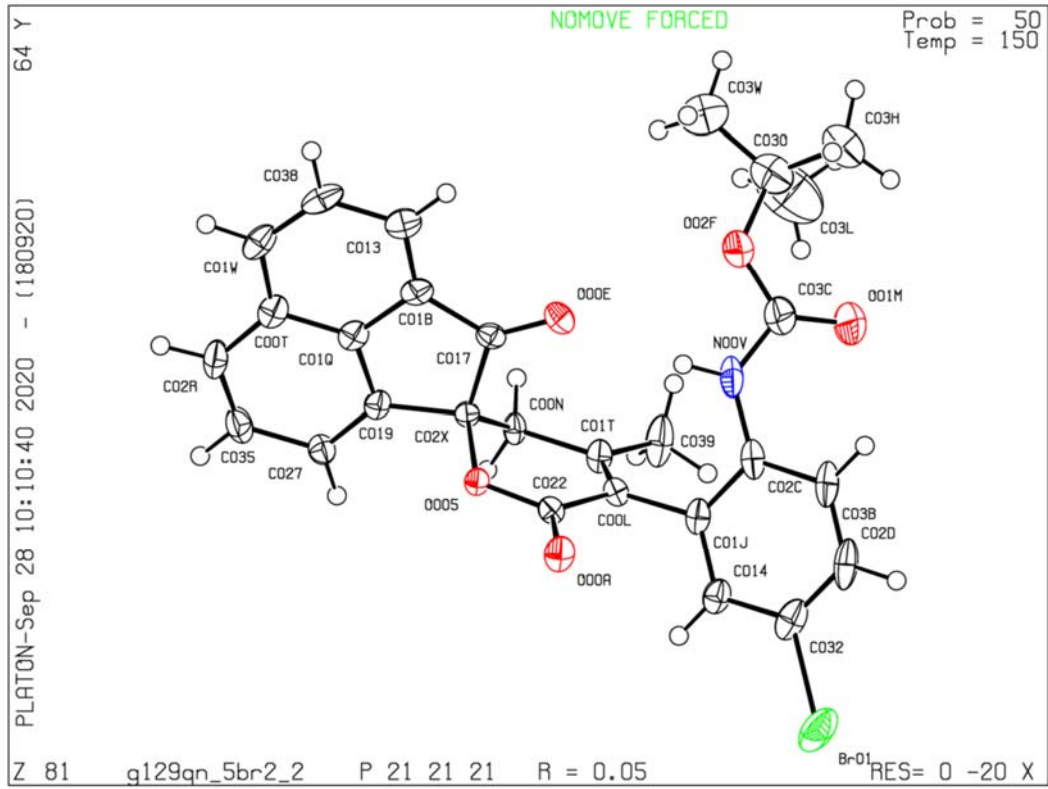
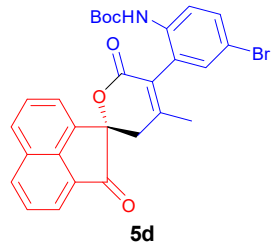
#### Table of Contents:

<b>1. Absolute Configuration and X-Ray Analysis Data.....</b>	<b>S2</b>
<b>2. Unsuccessful substrates.....</b>	<b>S6</b>
<b>3. Copies of NMR Spectra of Products 3, 5 and 7.....</b>	<b>S7</b>
<b>4. Copies of HPLC Spectra of Products 3, 5 and 7.....</b>	<b>S30</b>

## 1. Absolute Configuration and X-Ray Analysis Data

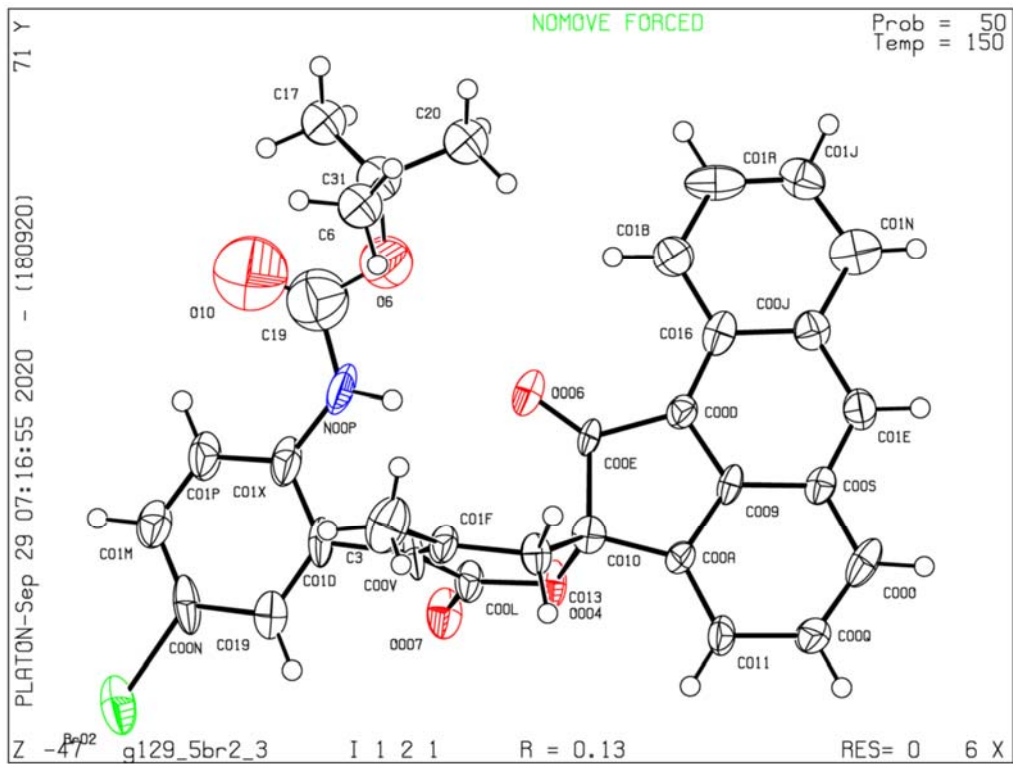
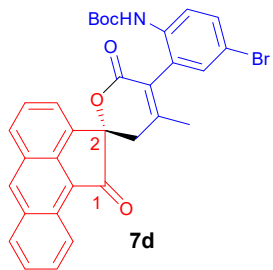
**Table 1. Crystal data and structure refinement for 5d.**

Identification code	<b>5d</b>	
Empirical formula	C <sub>28</sub> H <sub>25</sub> Br N O <sub>5</sub>	
Formula weight	535.40	
Temperature	150.15 K	
Wavelength	0.71075 Å	
Crystal system	Orthorhombic	
Space group	<b>P212121</b>	
Unit cell dimensions	a = 7.2170(7) Å	a = 90°.
	b = 15.0680(14) Å	b = 90°.
	c = 23.762(2) Å	c = 90°.
Volume	2584.0(4) Å <sup>3</sup>	
Z	4	
Density (calculated)	1.376 Mg/m <sup>3</sup>	
Absorption coefficient	1.628 mm <sup>-1</sup>	
F(000)	1100	
Crystal size	0.49 x 0.32 x 0.24 mm <sup>3</sup>	
Theta range for data collection	2.905 to 26.411°.	
Index ranges	-9 ≤ h ≤ 9, -18 ≤ k ≤ 18, -29 ≤ l ≤ 29	
Reflections collected	40741	
Independent reflections	5270 [R(int) = 0.0539]	
Completeness to theta = 25.243°	99.5 %	
Absorption correction	Semi-empirical from equivalents	
Refinement method	Full-matrix least-squares on F <sup>2</sup>	
Data / restraints / parameters	5270 / 0 / 320	
Goodness-of-fit on F <sup>2</sup>	1.098	
Final R indices [I > 2σ(I)]	R1 = 0.0551, wR2 = 0.1421	
R indices (all data)	R1 = 0.0593, wR2 = 0.1477	
Absolute structure parameter	0.048(17)	
Extinction coefficient	n/a	
Largest diff. peak and hole	1.108 and -0.596 e.Å <sup>-3</sup>	

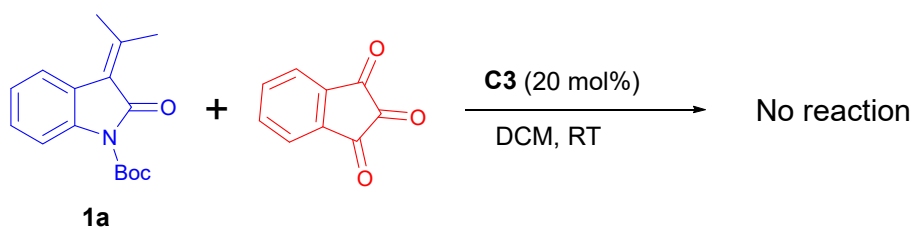
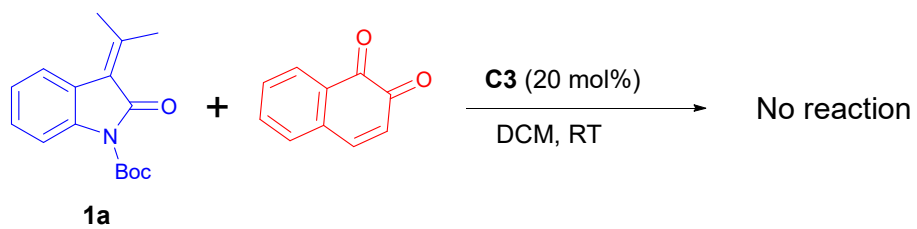


**Table 1. Crystal data and structure refinement for 7d**

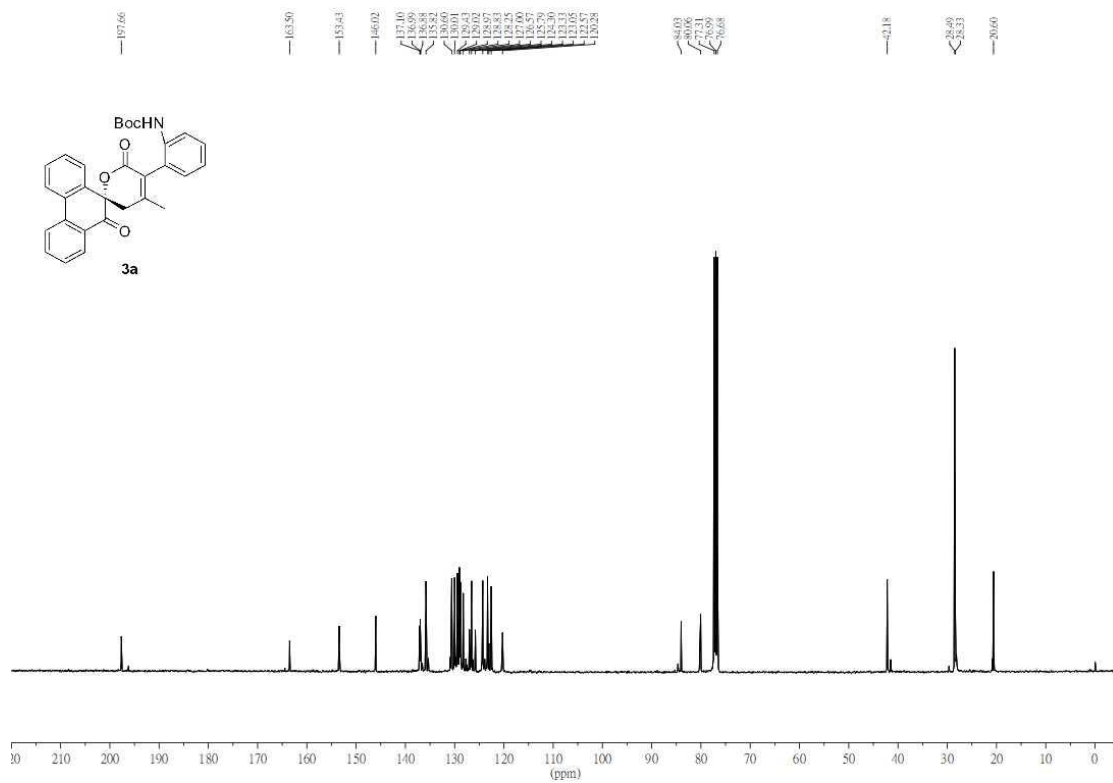
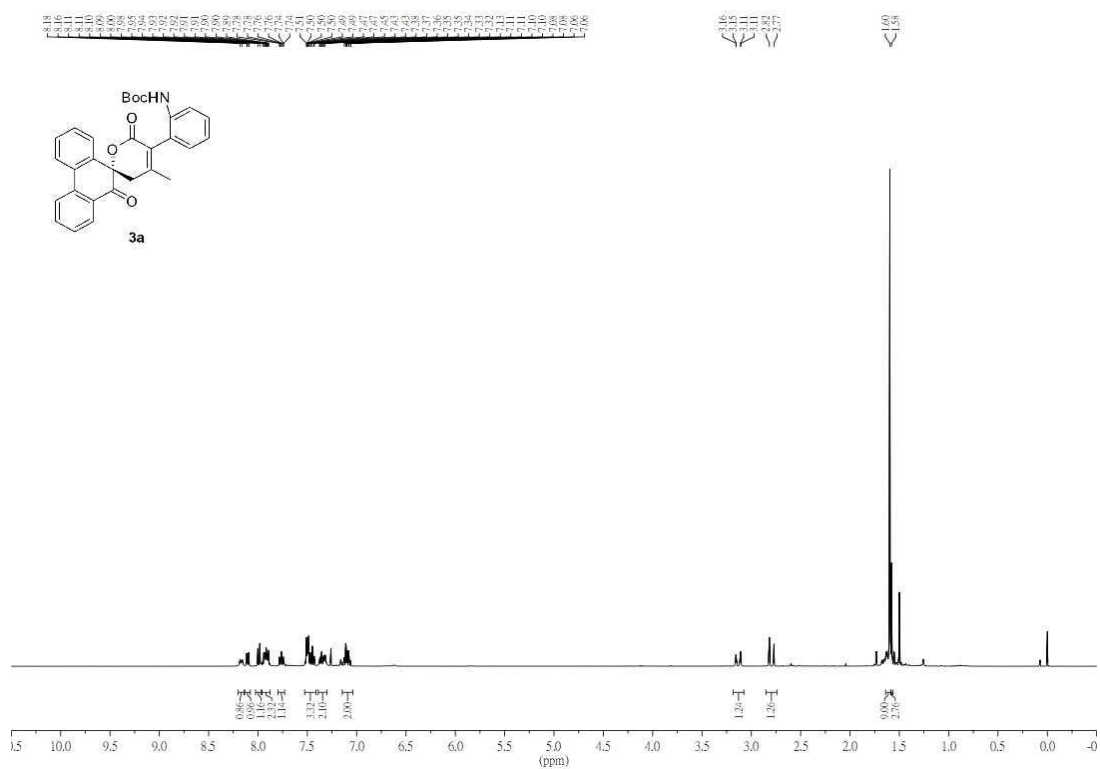
Identification code	<b>7d</b>	
Empirical formula	C <sub>31</sub> H <sub>24</sub> Br N O <sub>5</sub>	
Formula weight	570.42	
Temperature	150.15 K	
Wavelength	0.71075 Å	
Crystal system	Monoclinic	
Space group	I 1 2 1	
Unit cell dimensions	a = 7.179(2) Å	a = 90°.
	b = 15.131(6) Å	b =
	c = 26.209(11) Å	g = 90°.
Volume	2843.7(18) Å <sup>3</sup>	
Z	4	
Density (calculated)	1.332 Mg/m <sup>3</sup>	
Absorption coefficient	1.484 mm <sup>-1</sup>	
F(000)	1168	
Crystal size	0.49 x 0.32 x 0.24 mm <sup>3</sup>	
Theta range for data collection	2.909 to 26.550°.	
Index ranges	-8 ≤ h ≤ 8, -18 ≤ k ≤ 19, -32 ≤ l ≤ 32	
Reflections collected	22836	
Independent reflections	5867 [R(int) = 0.1031]	
Completeness to theta = 25.243°	99.7 %	
Absorption correction	Semi-empirical from equivalents	
Refinement method	Full-matrix least-squares on F <sup>2</sup>	
Data / restraints / parameters	5867 / 19 / 329	
Goodness-of-fit on F <sup>2</sup>	1.409	
Final R indices [I > 2σ(I)]	R1 = 0.1349, wR2 = 0.3526	
R indices (all data)	R1 = 0.1777, wR2 = 0.3872	
Absolute structure parameter	0.09(4)	
Extinction coefficient	n/a	
Largest diff. peak and hole	3.213 and -1.513 e.Å <sup>-3</sup>	

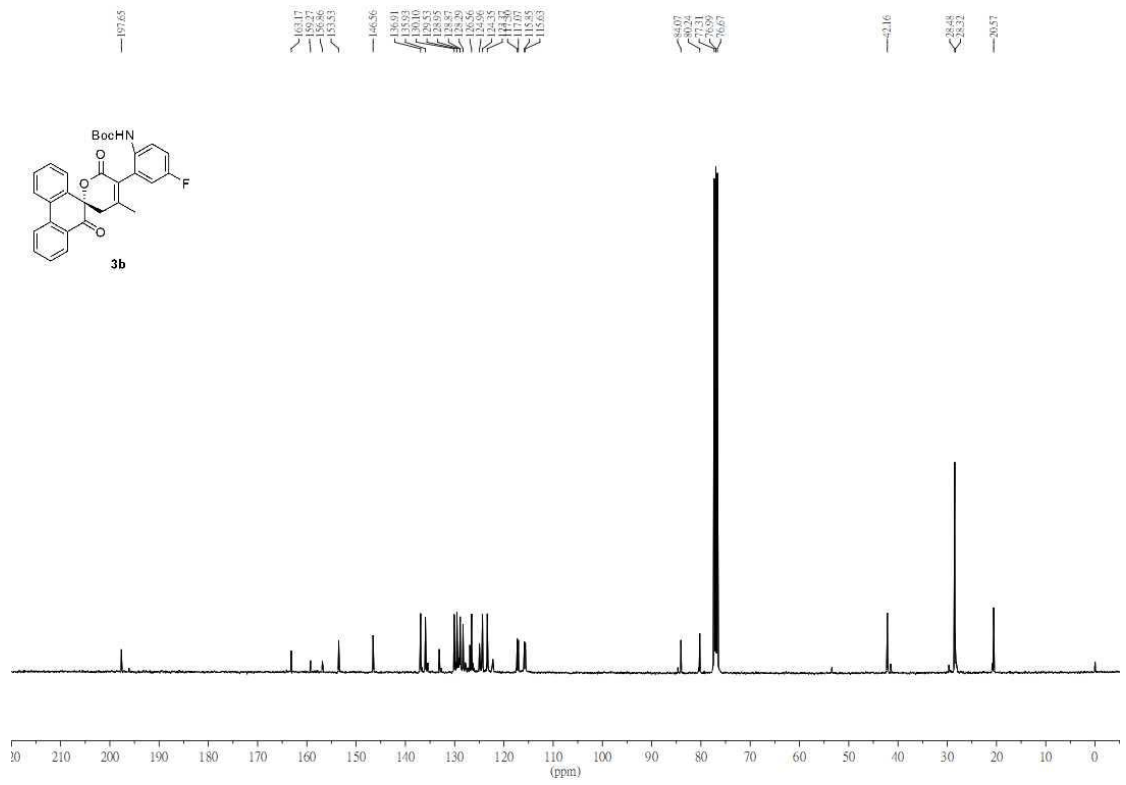
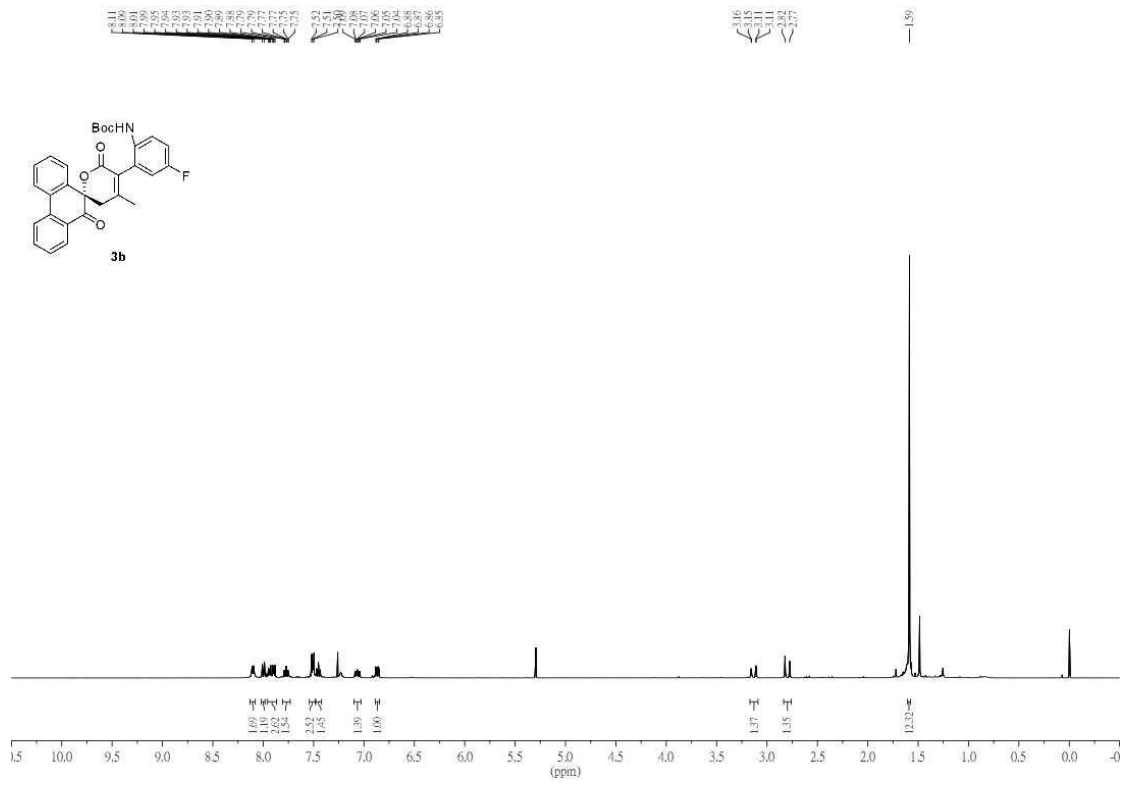


## 2. Unsuccessful substrates



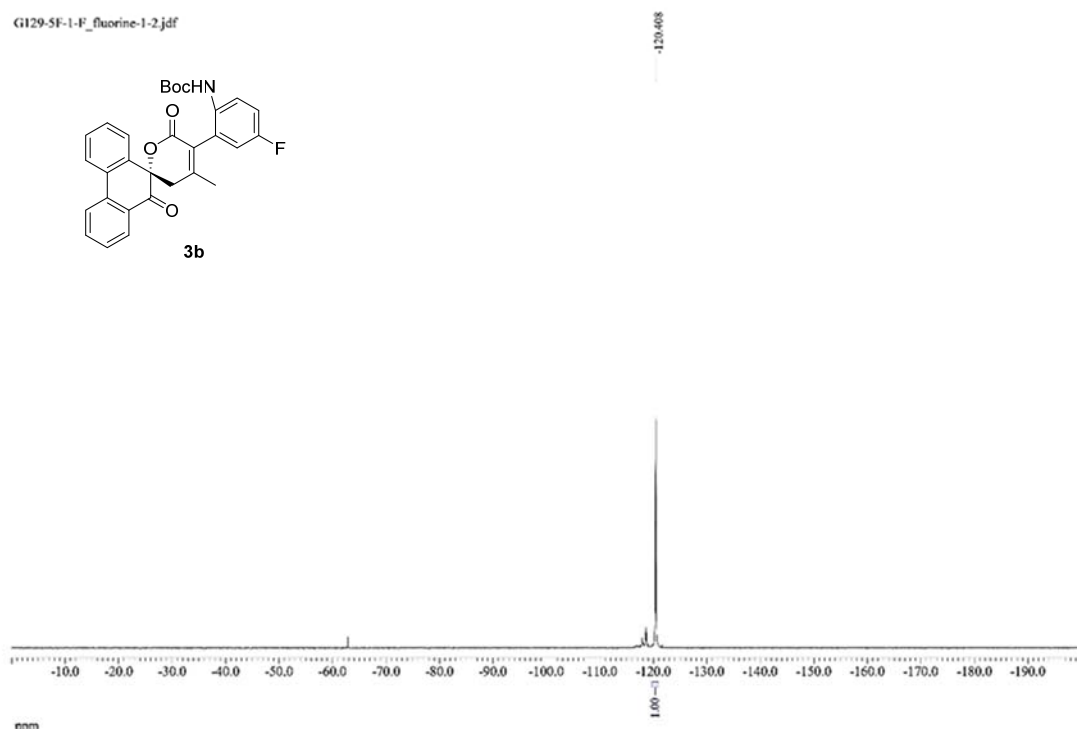
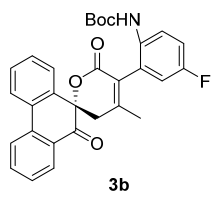
### 3. Copies of NMR Spectra of Products 3, 5 and 7

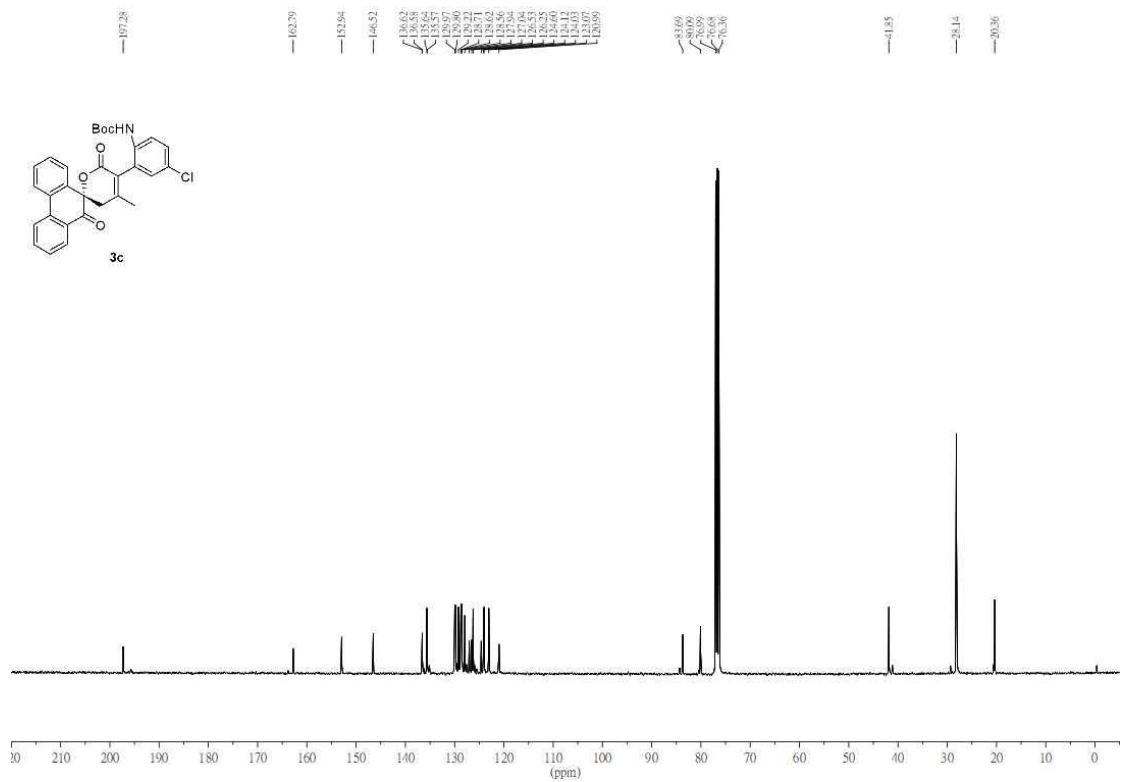
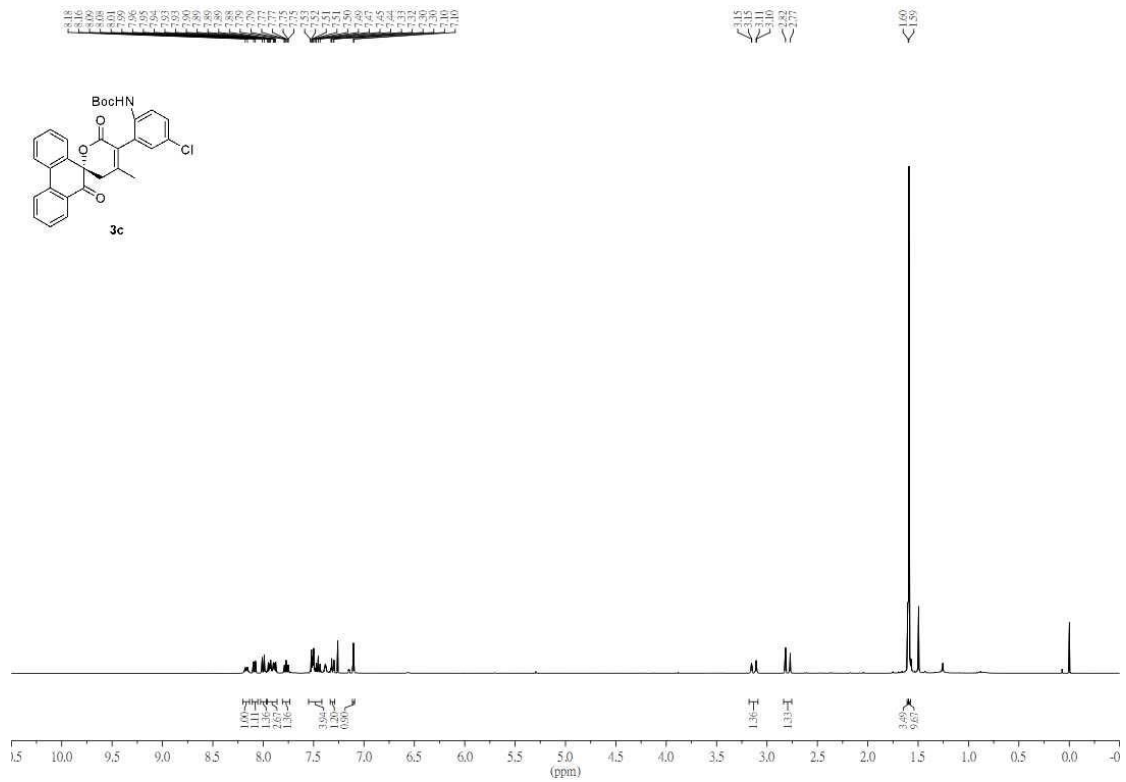


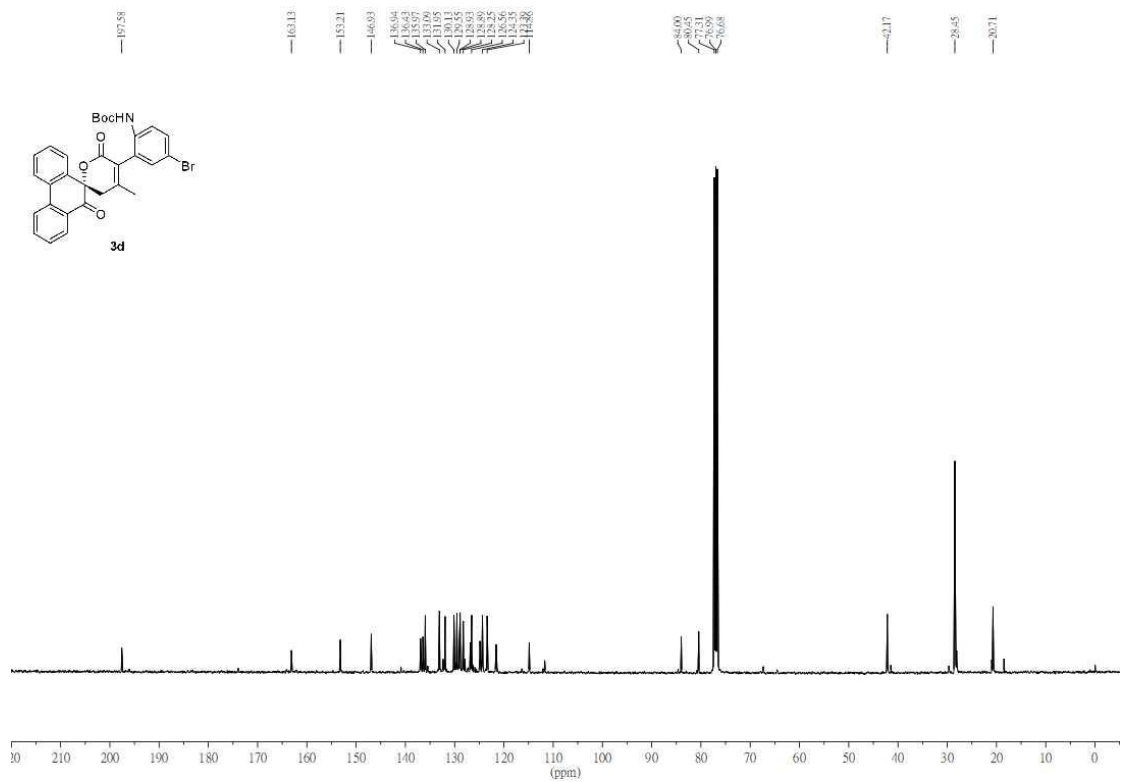
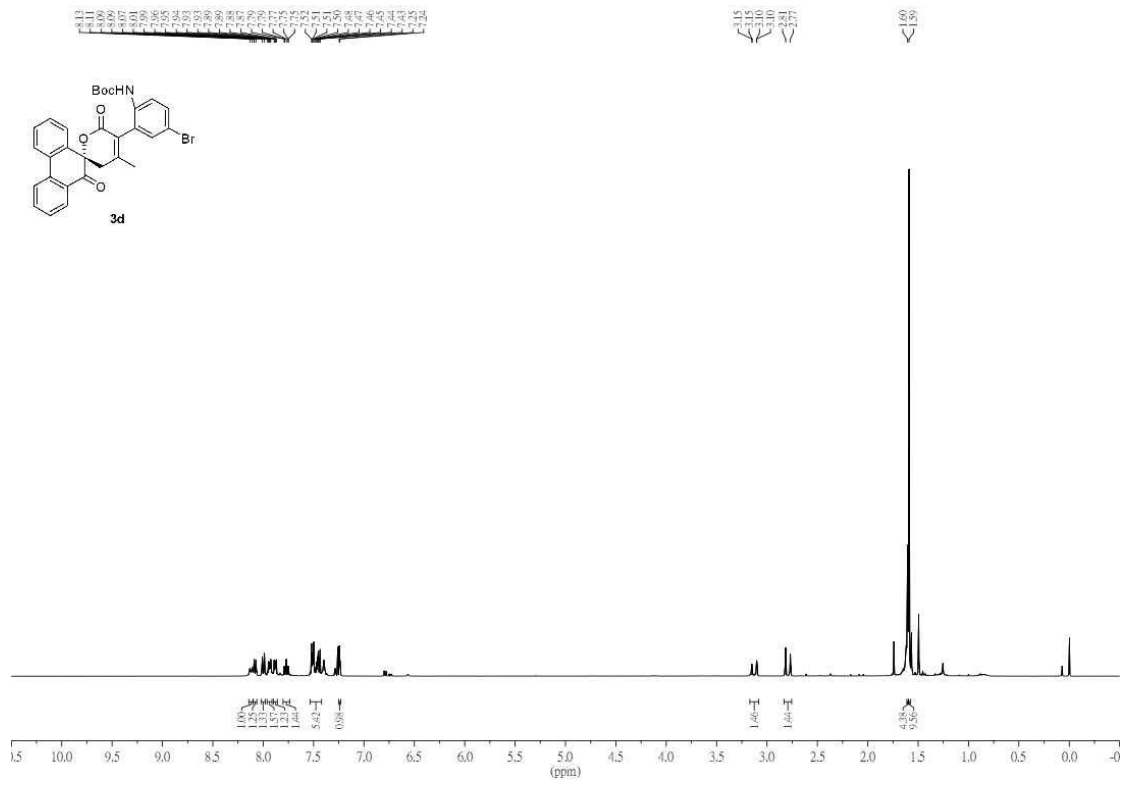


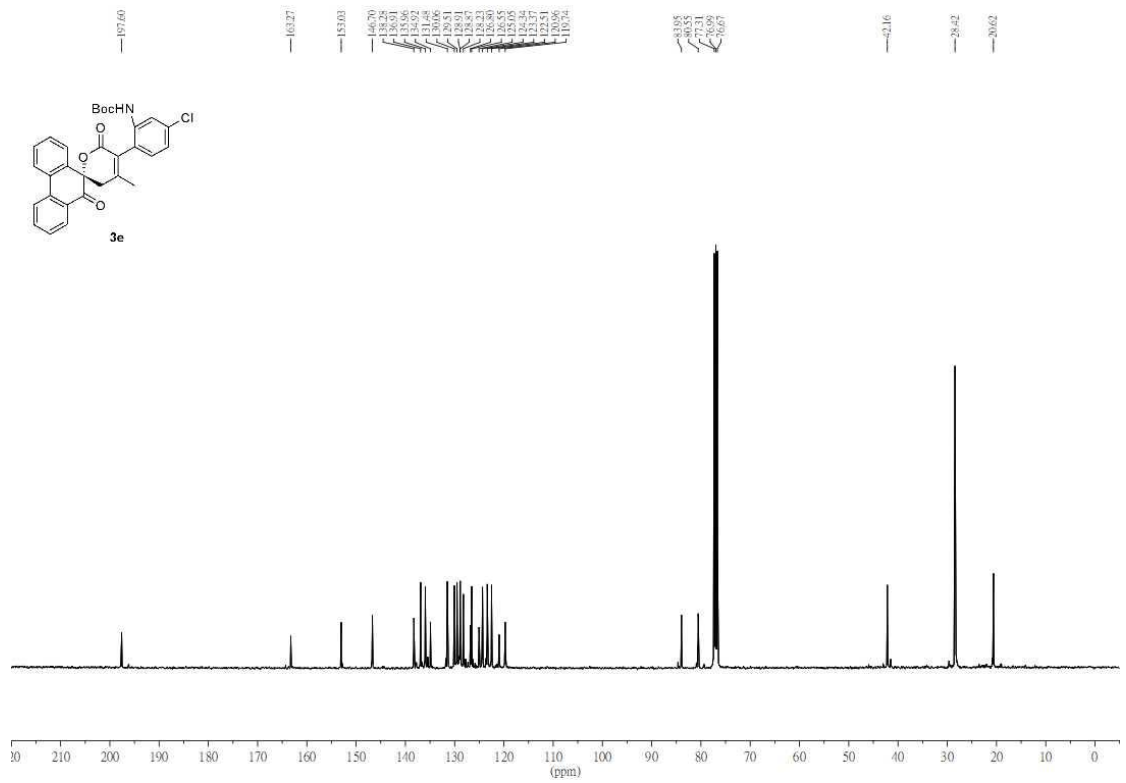
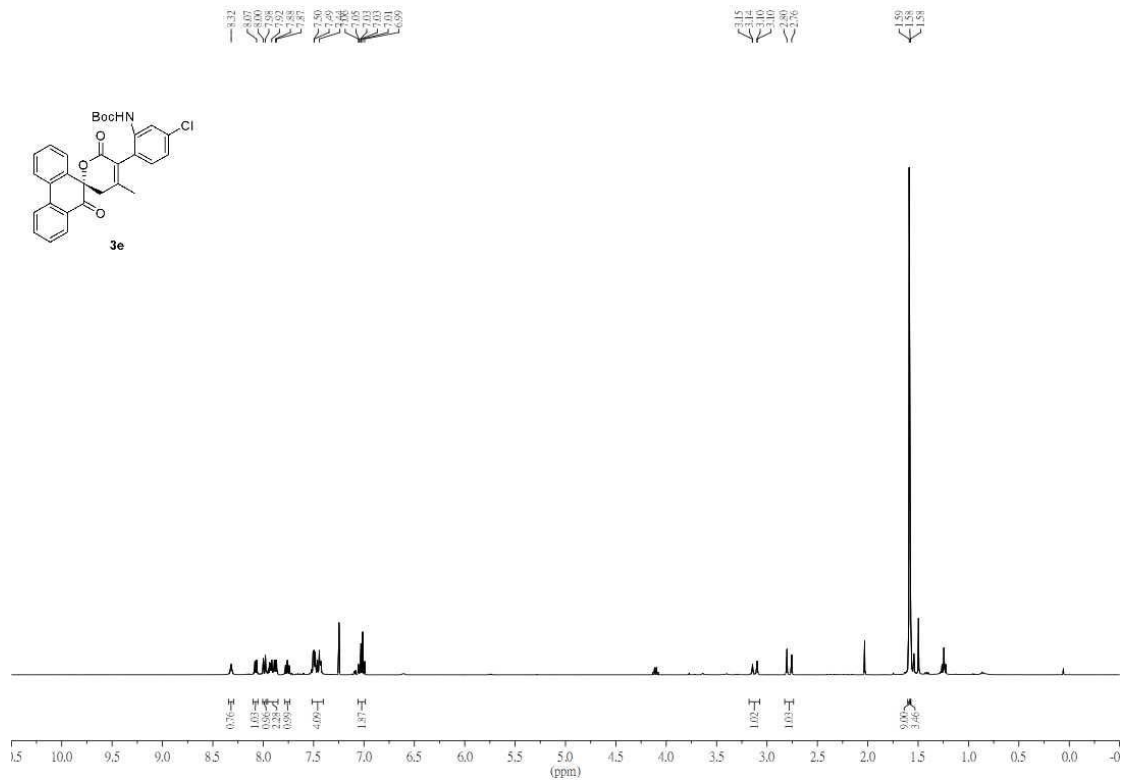


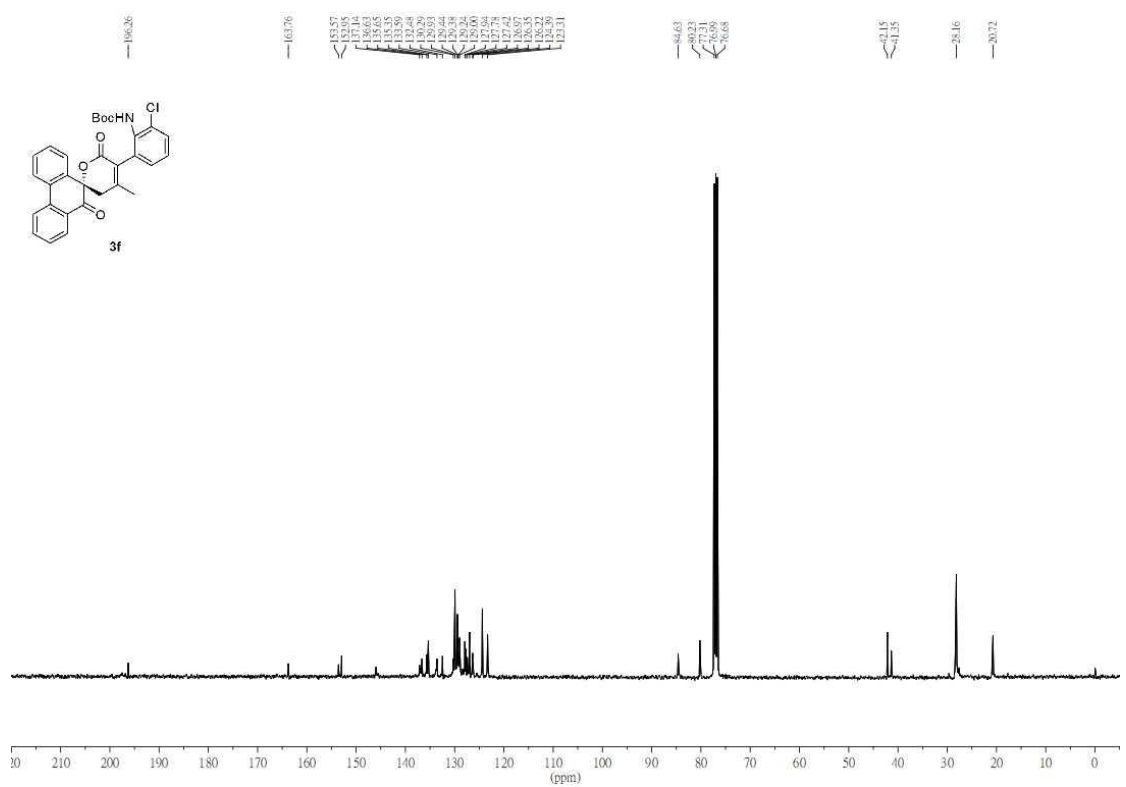
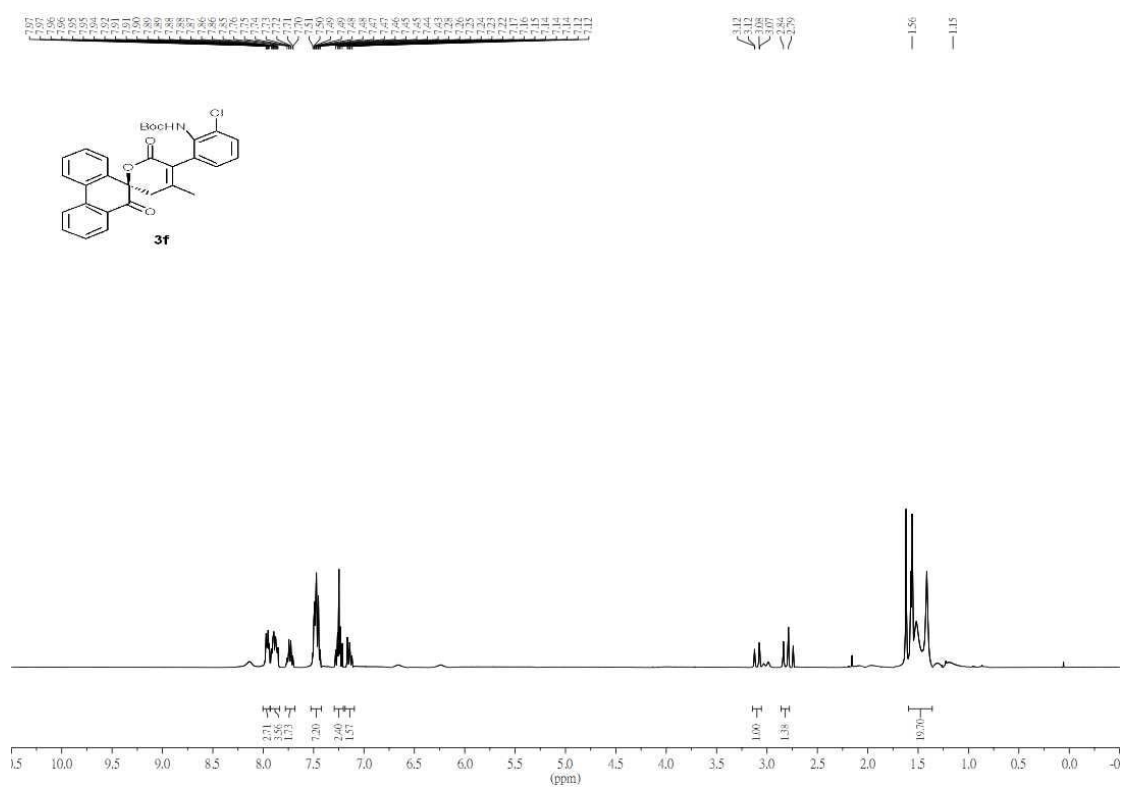
G129-5F-1-F\_fluorine-1-2.jdf

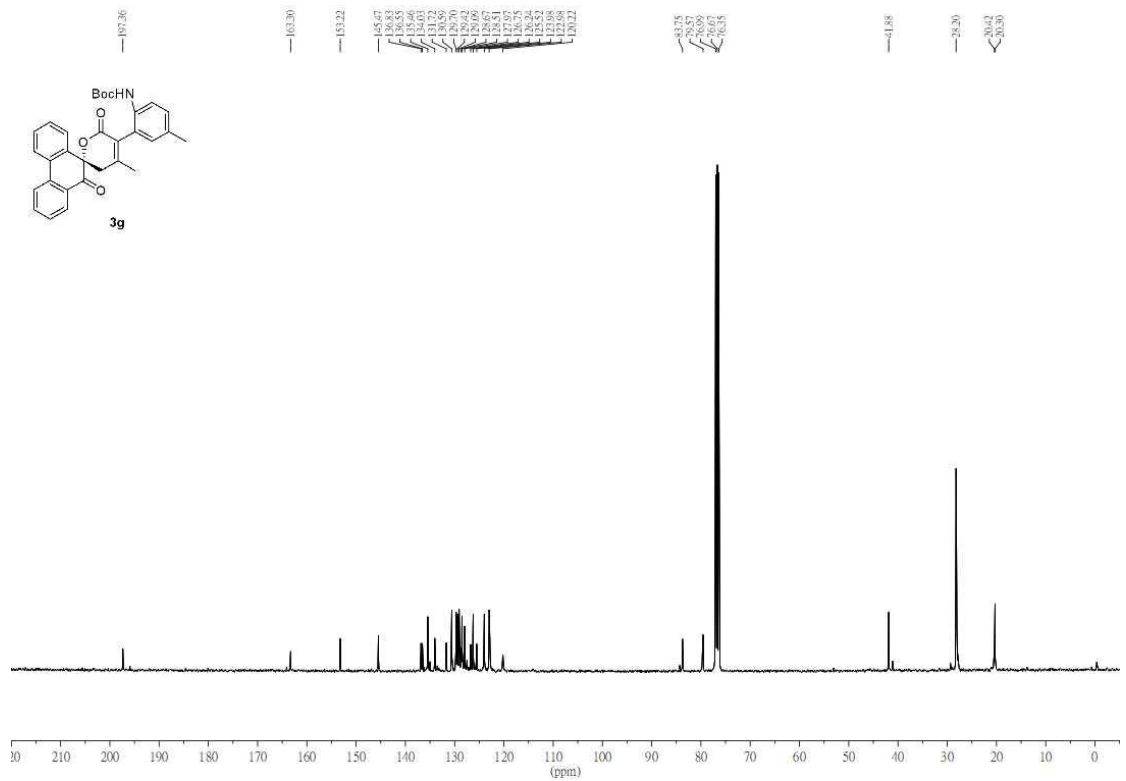
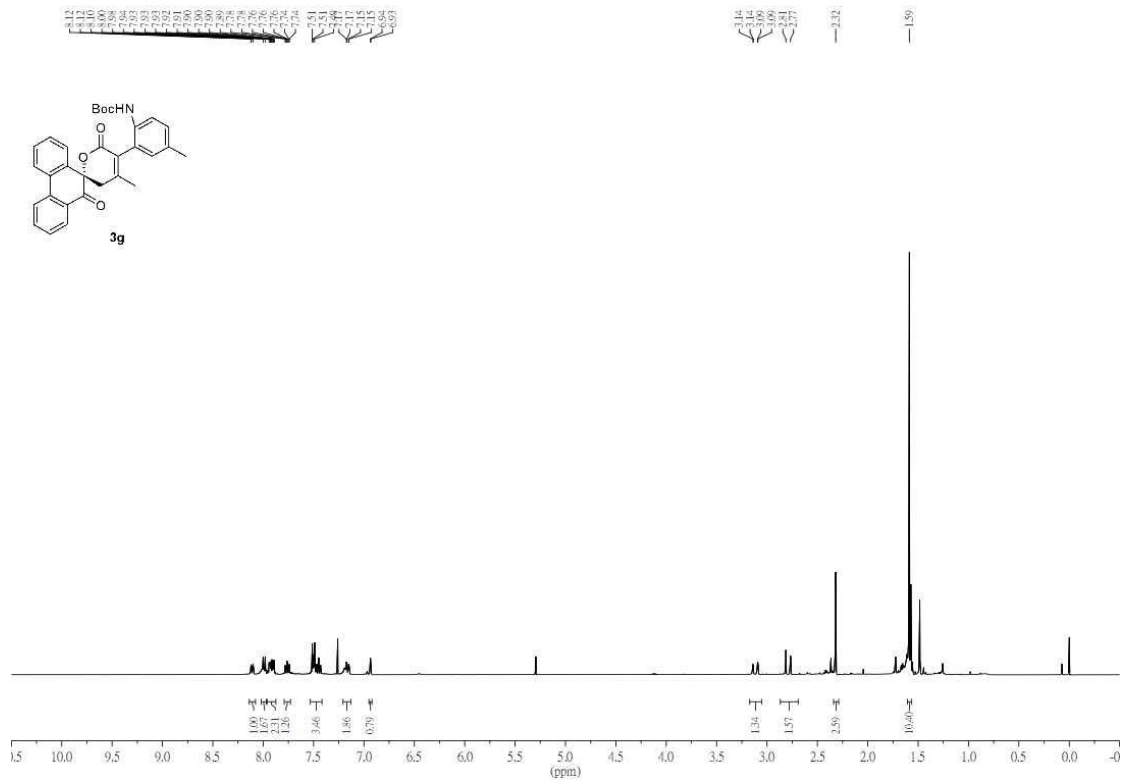


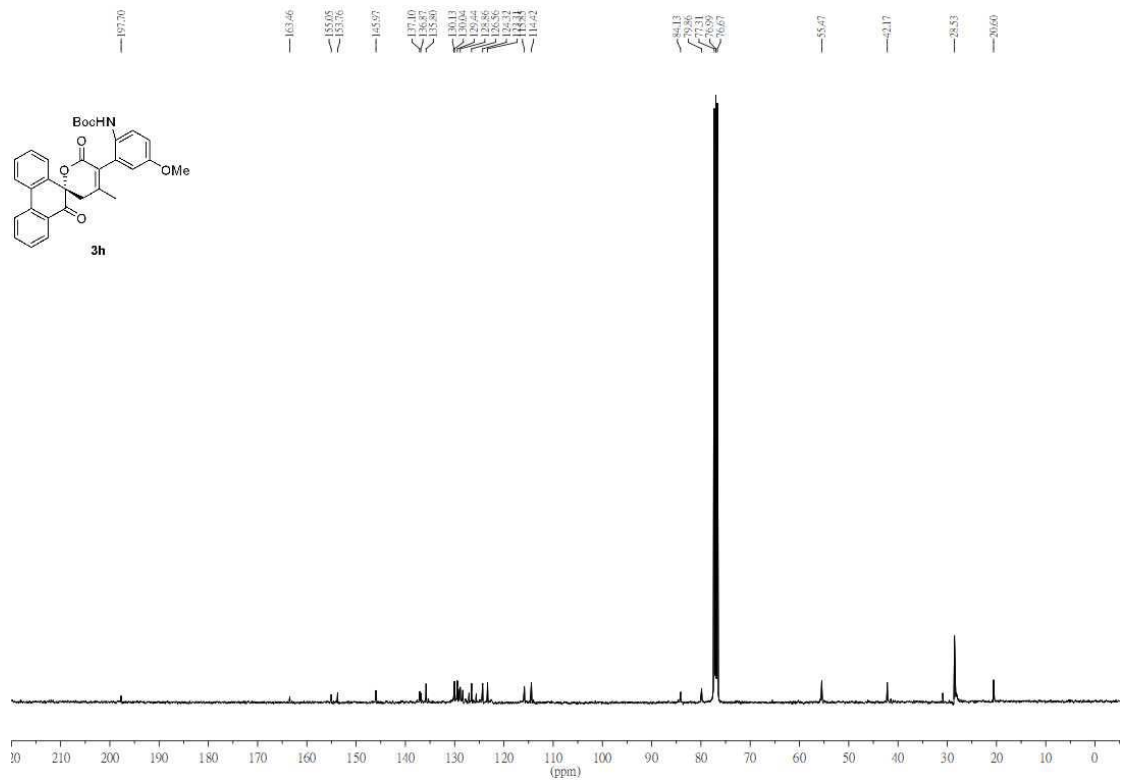
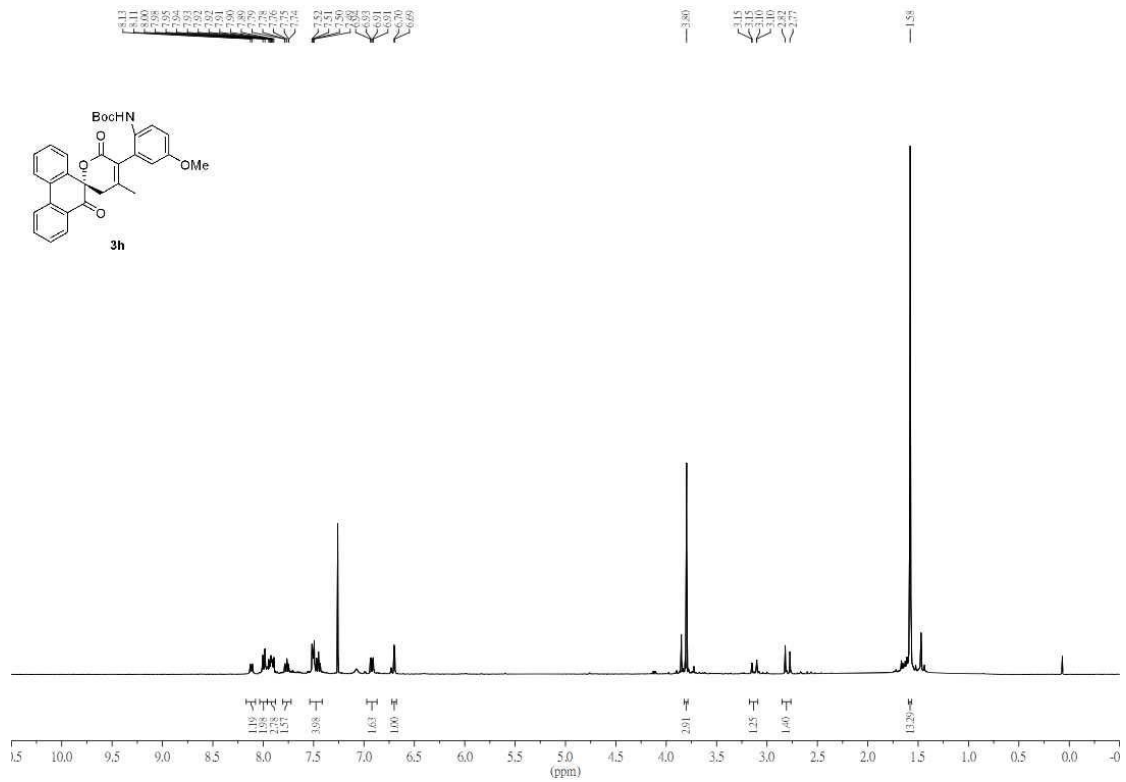


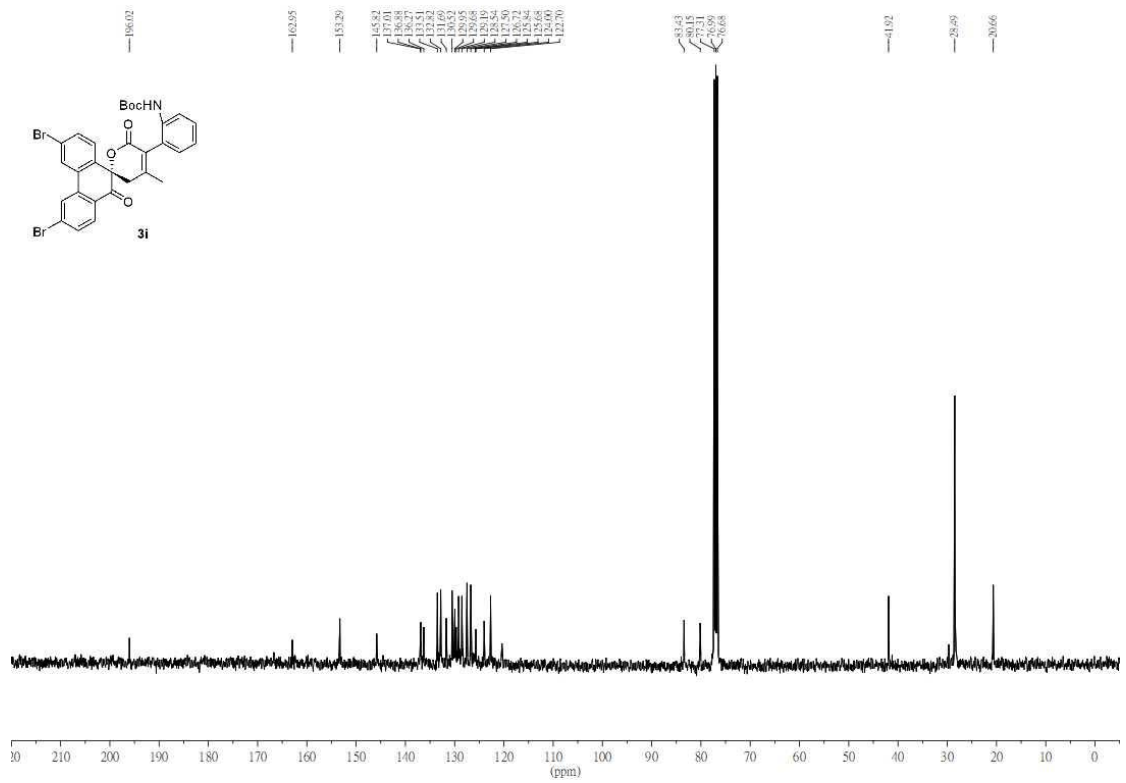
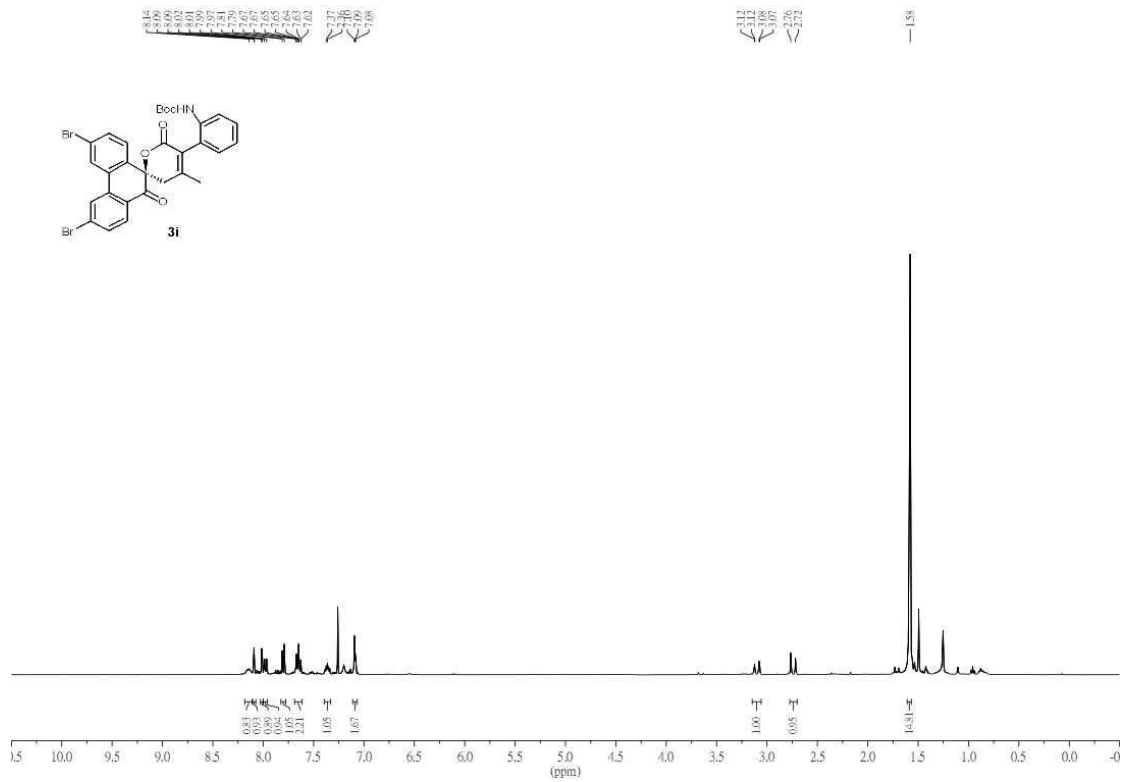




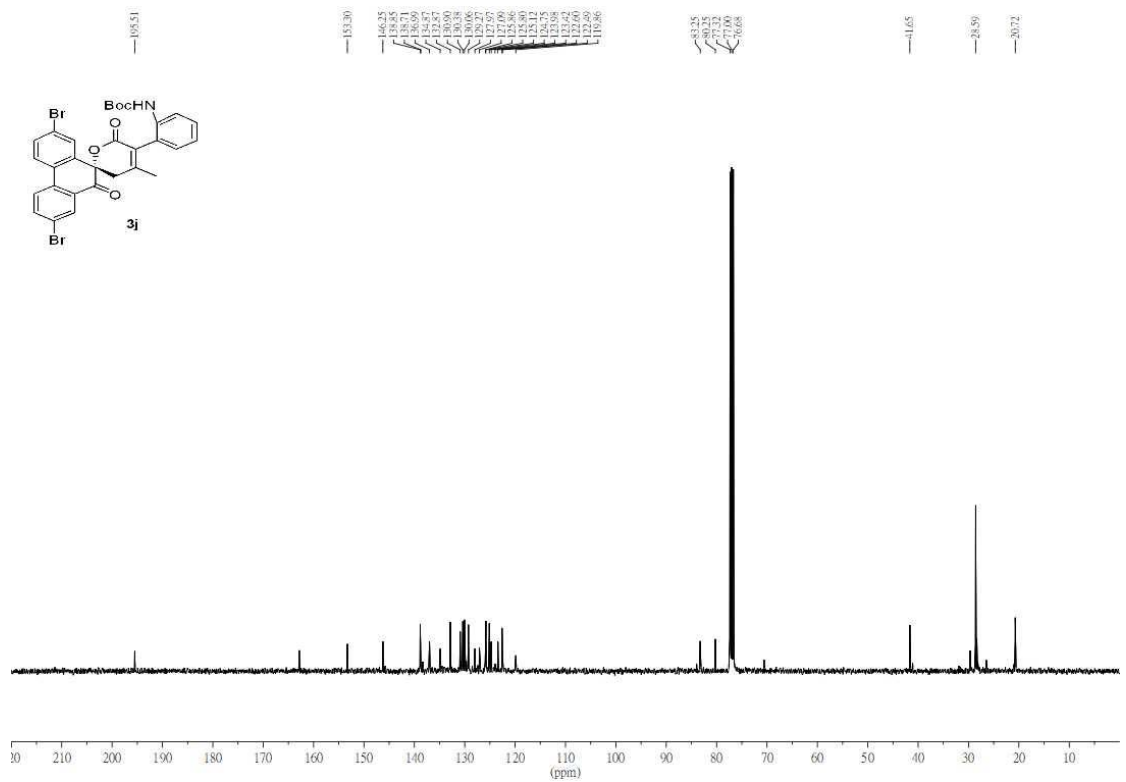
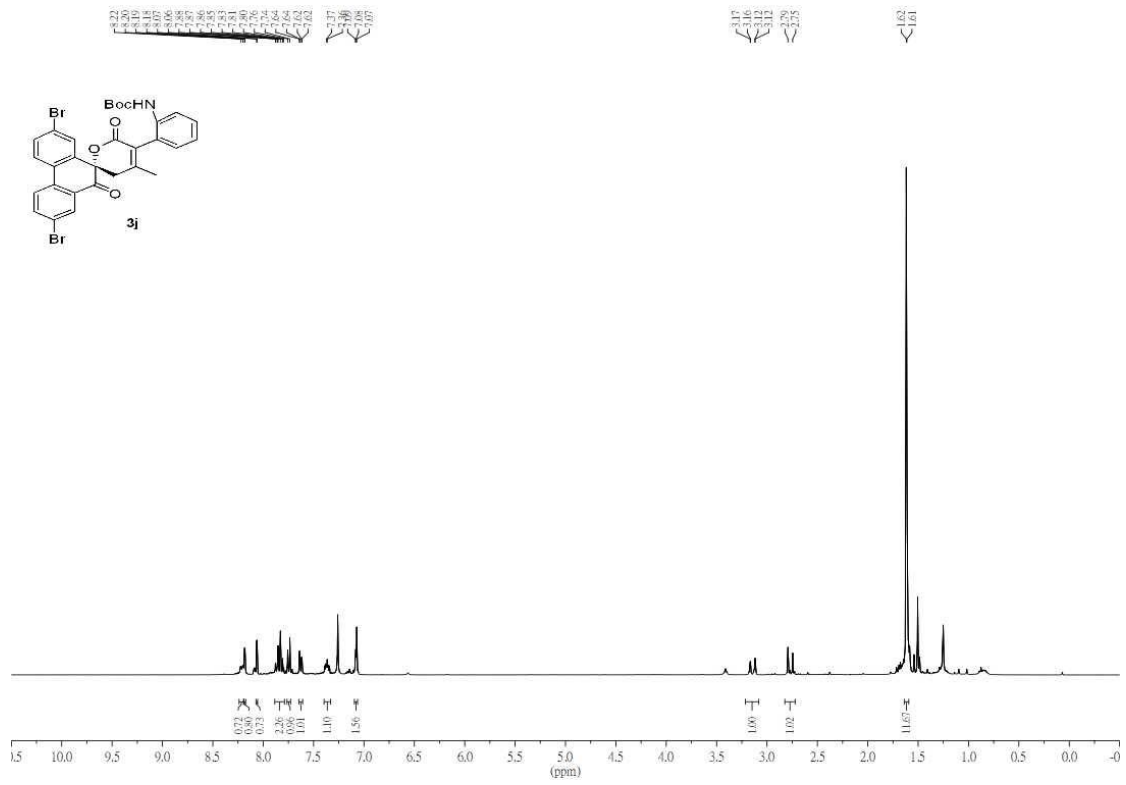


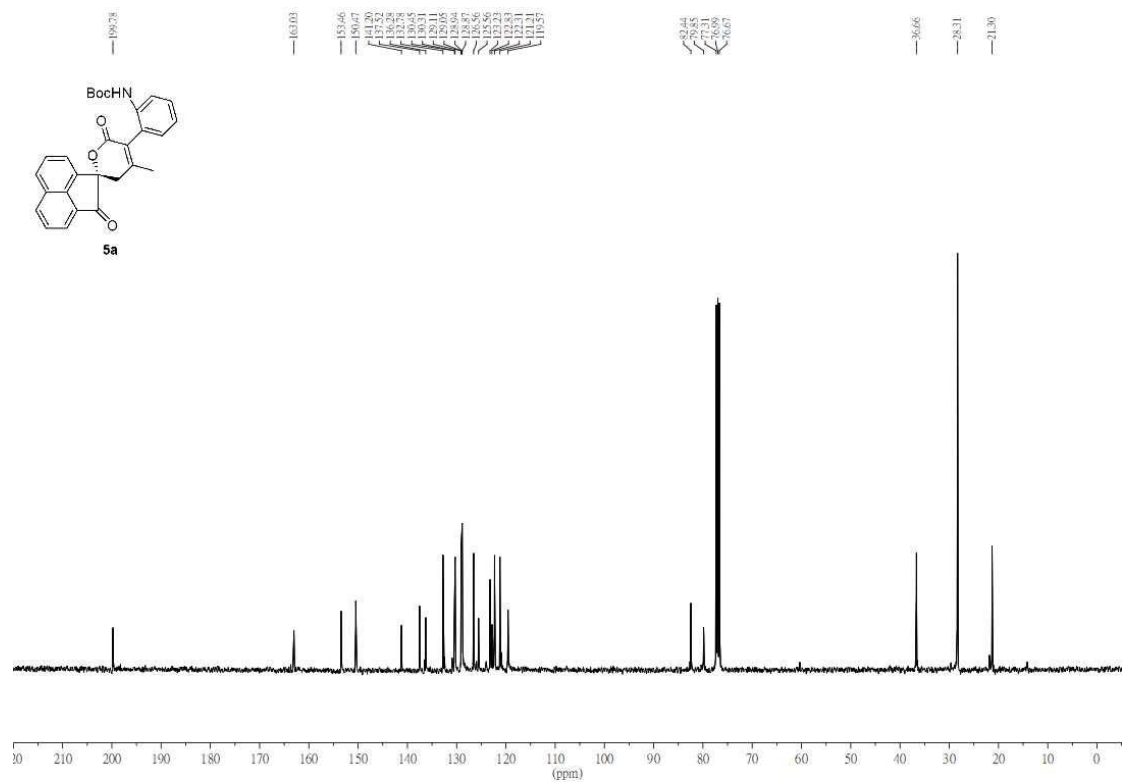
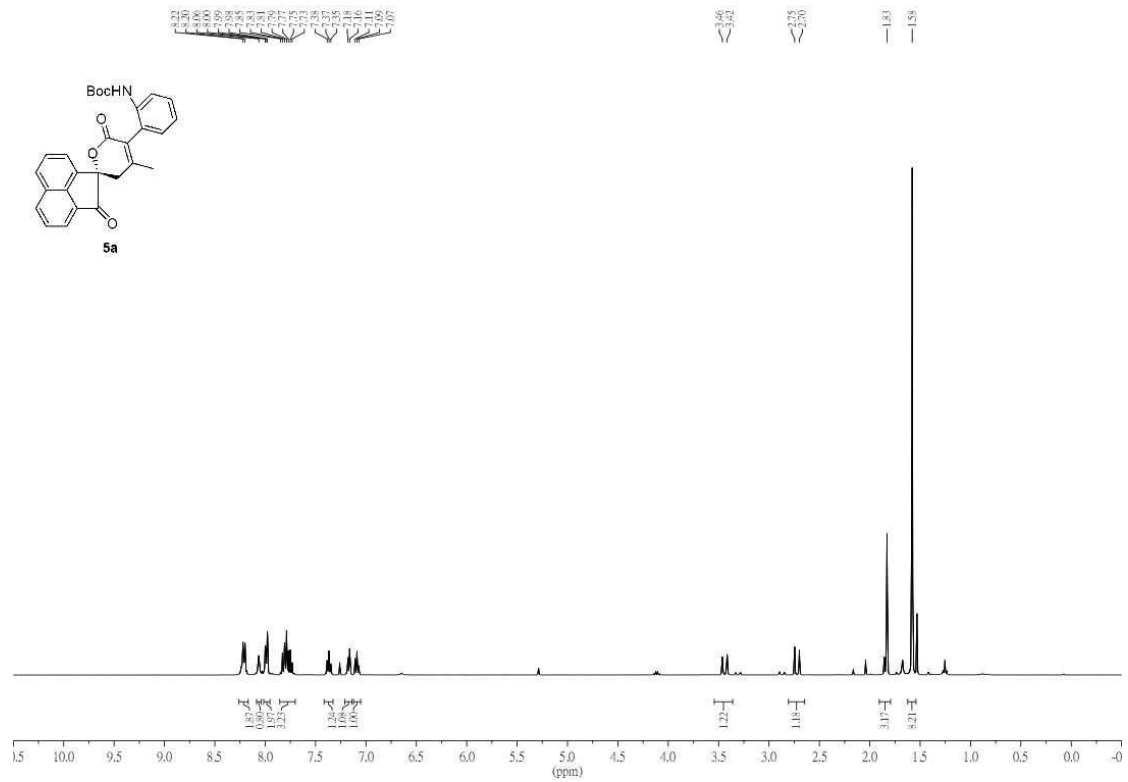


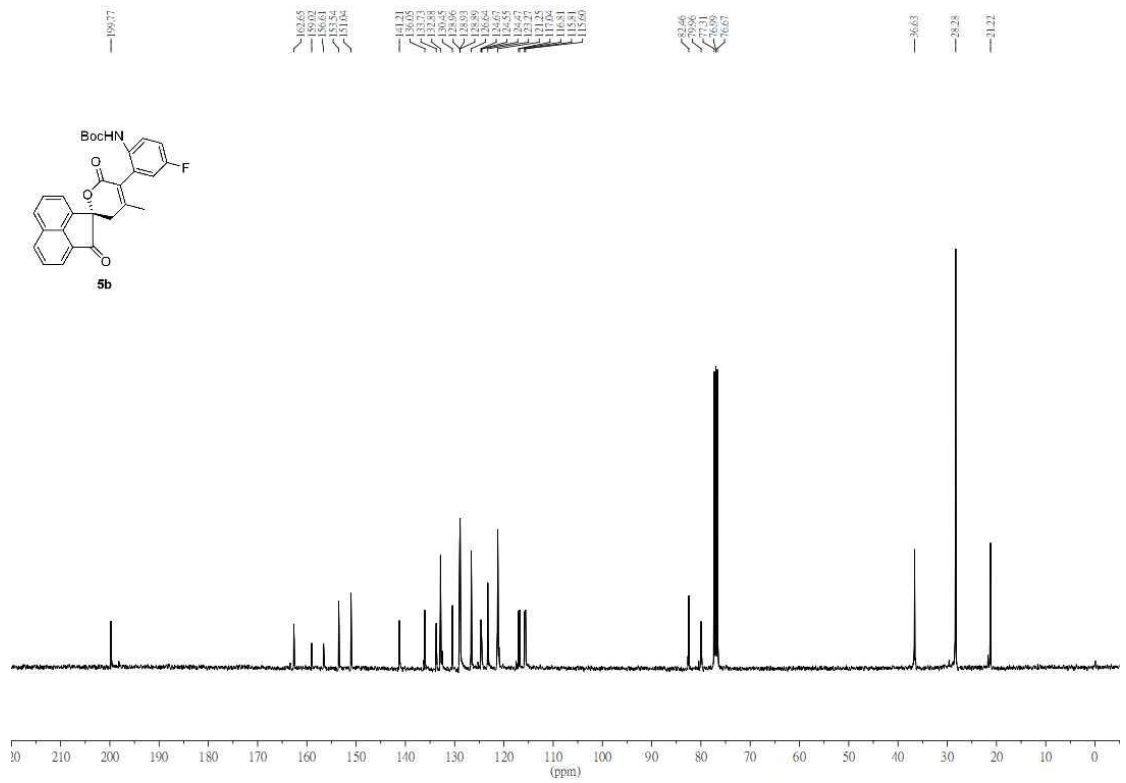
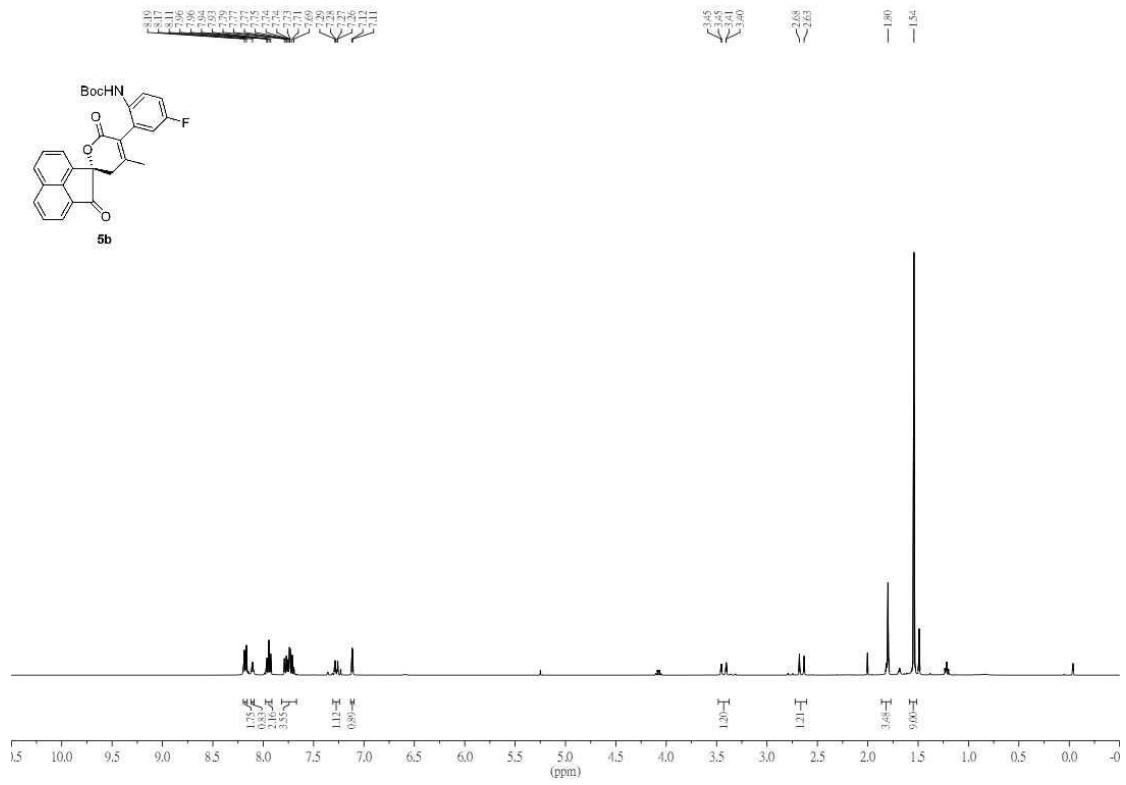




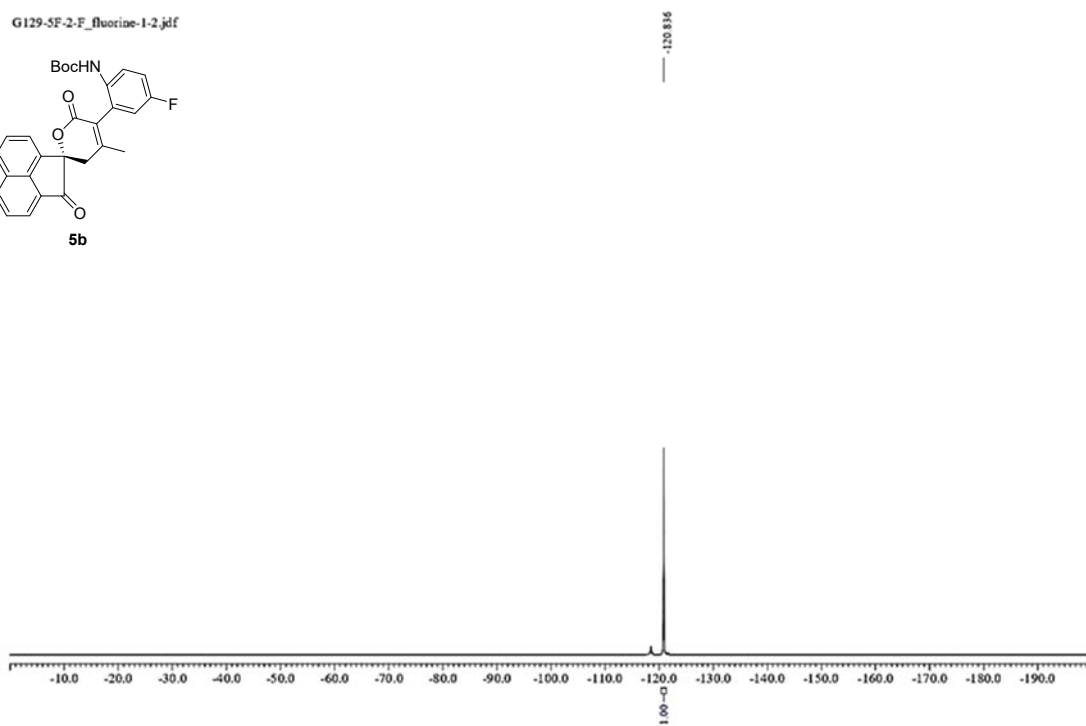
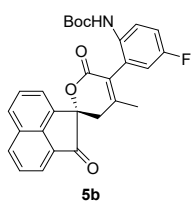


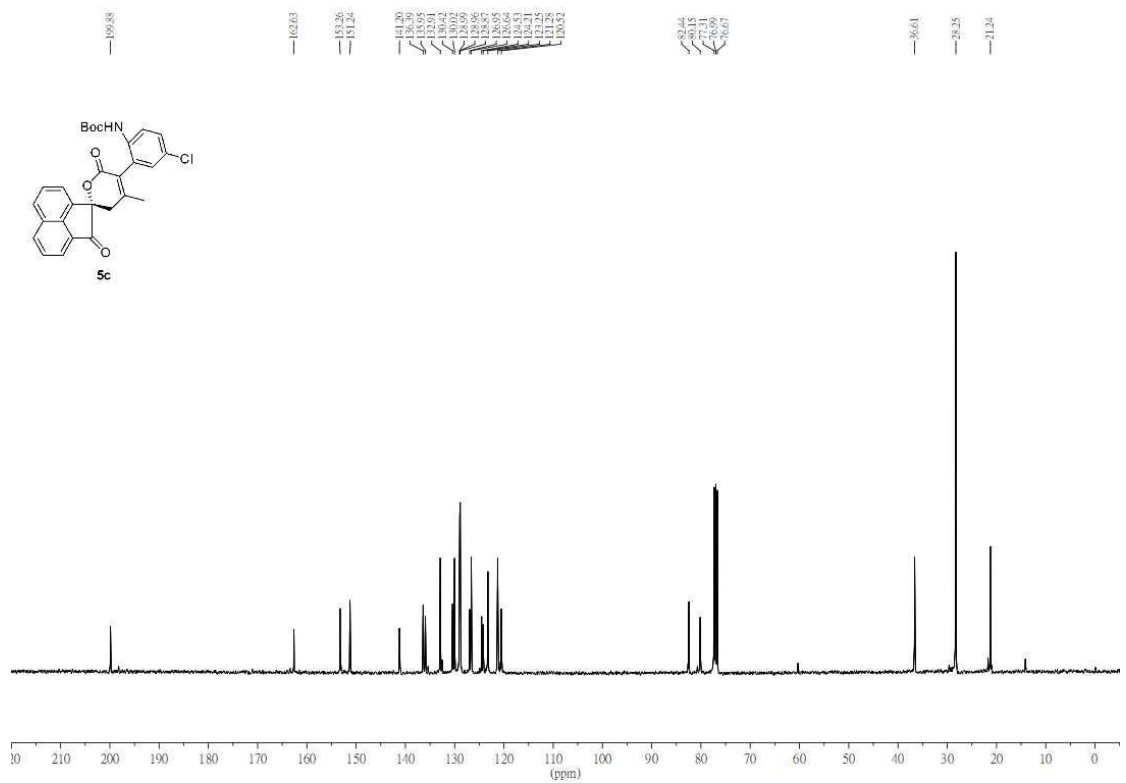
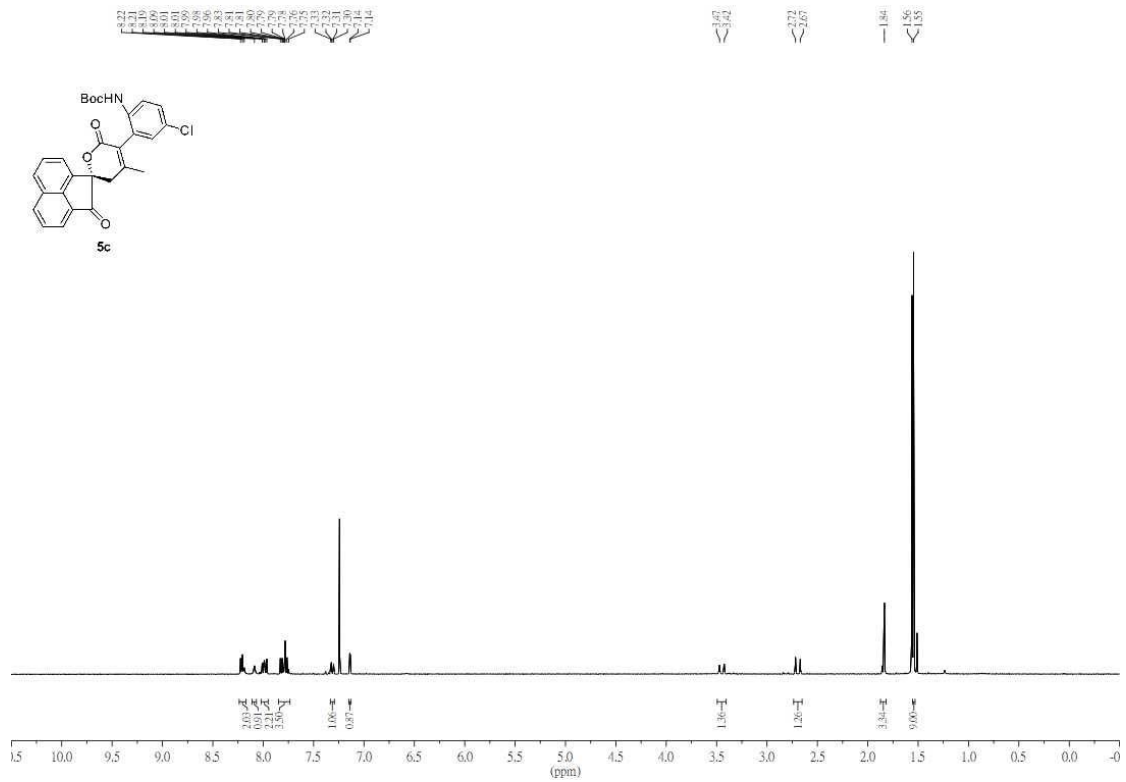


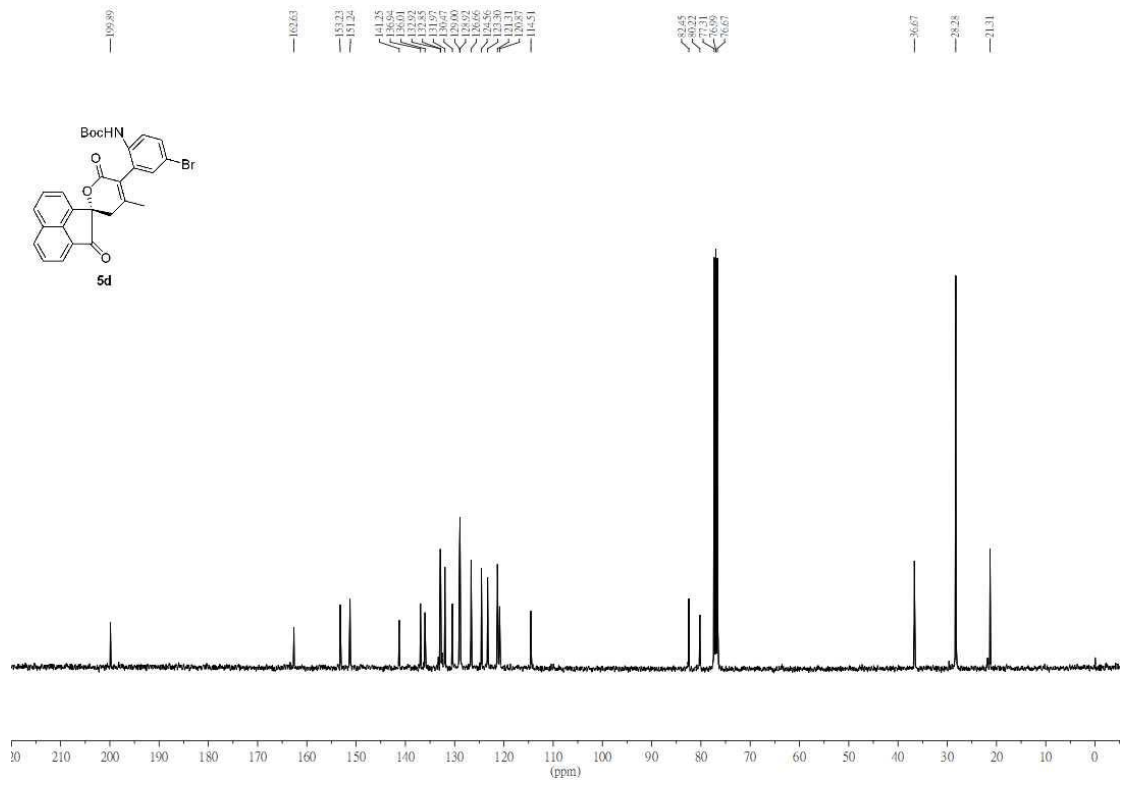
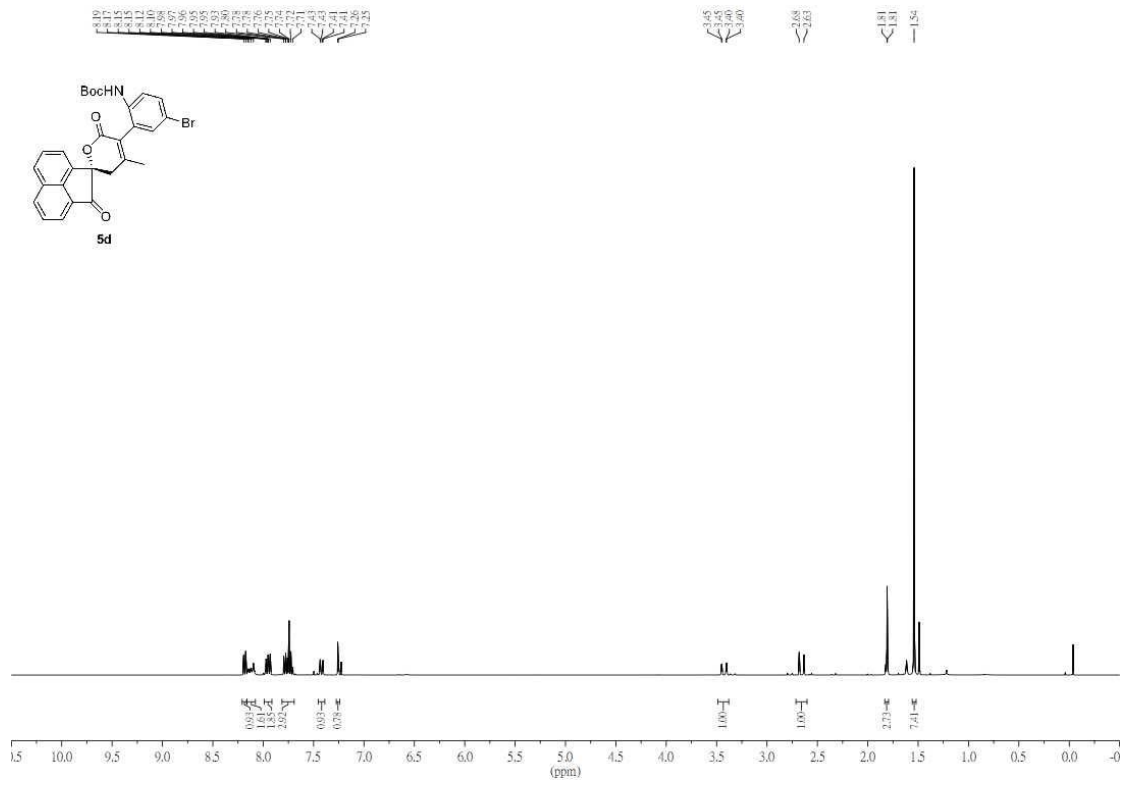


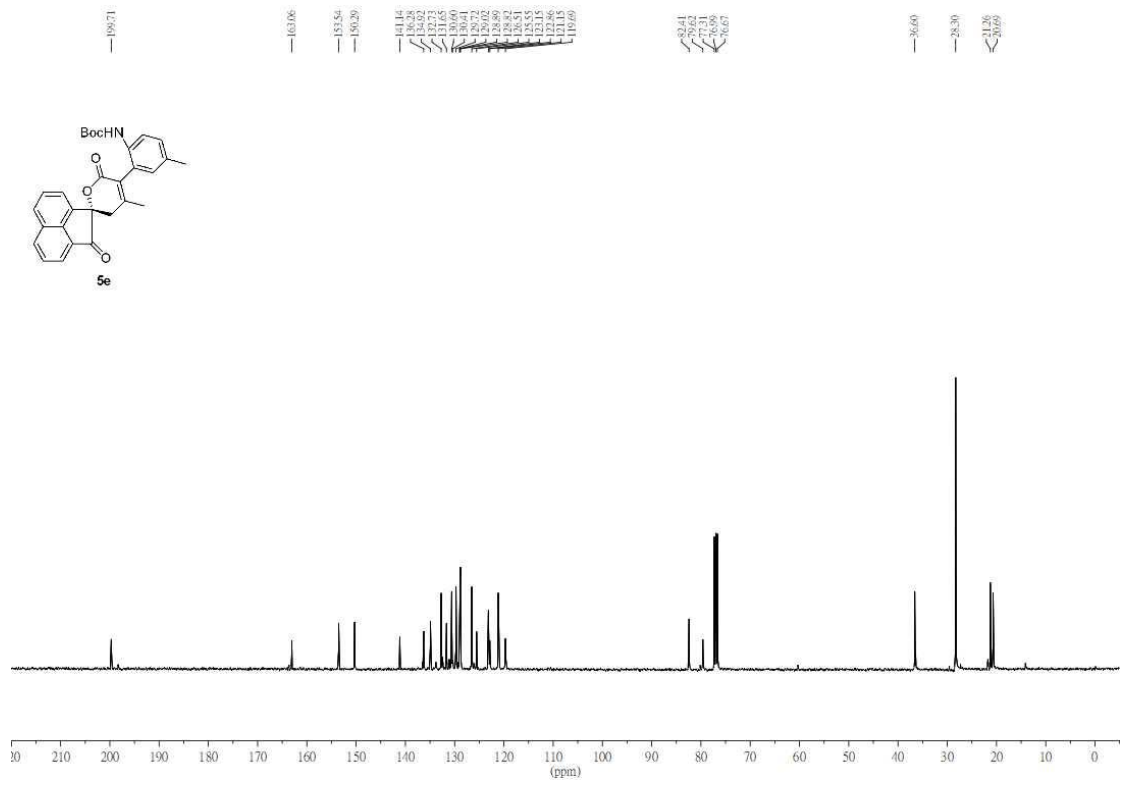
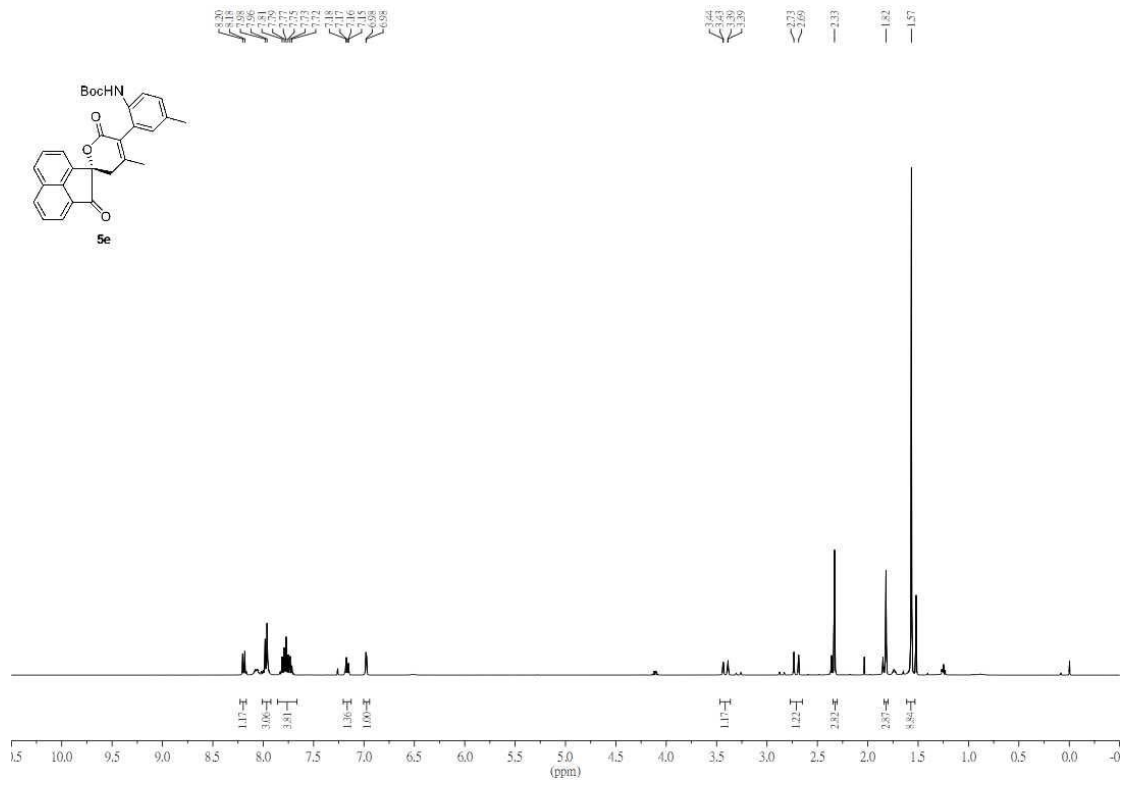


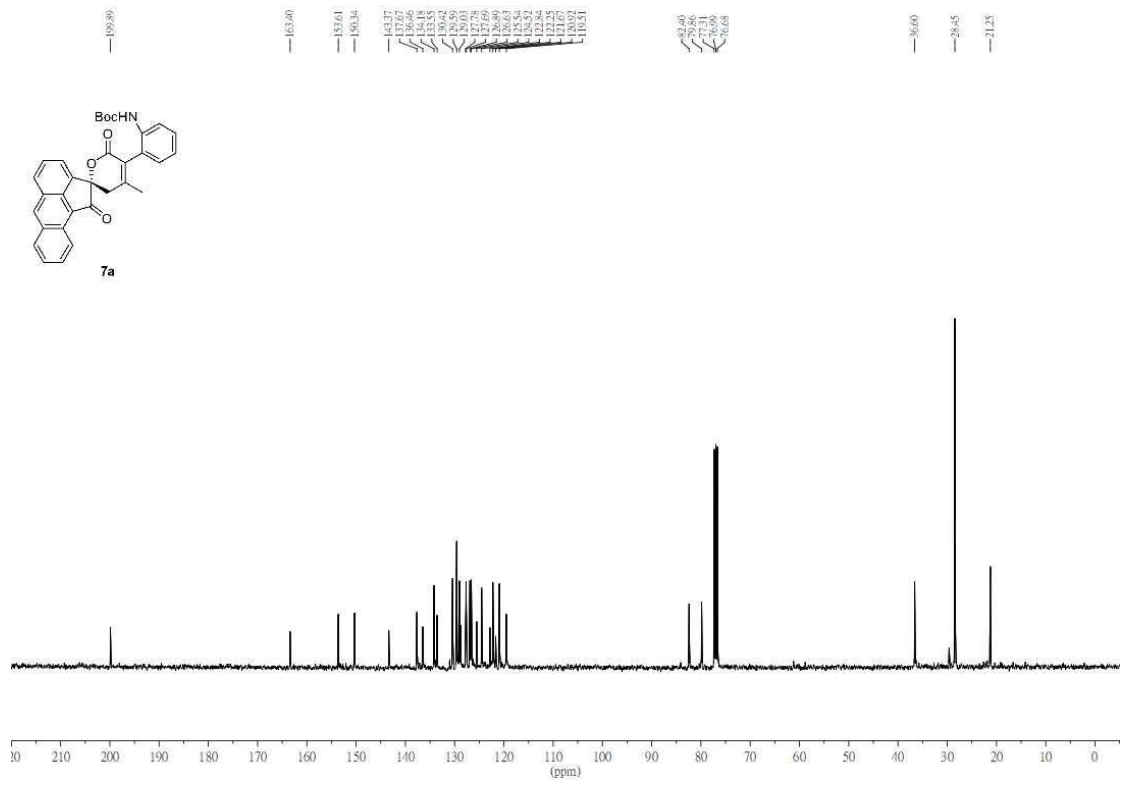
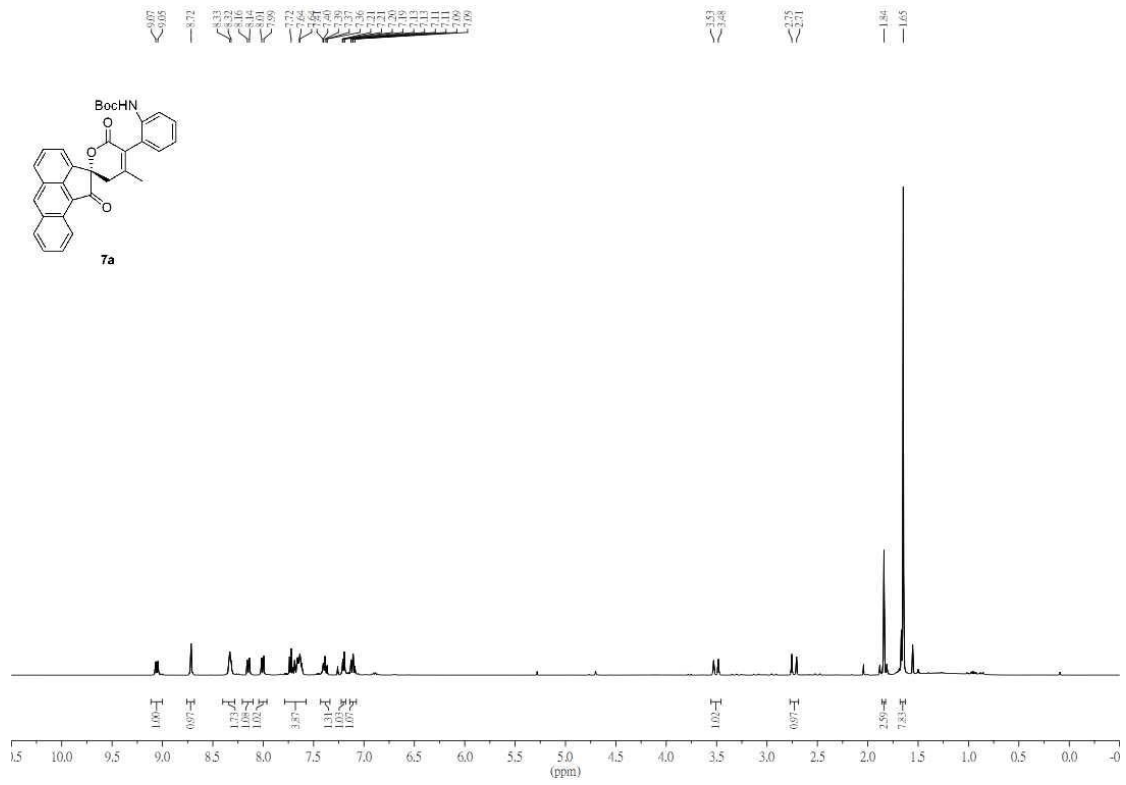
G129-SF-2-F\_fluorine-1-2.pdf



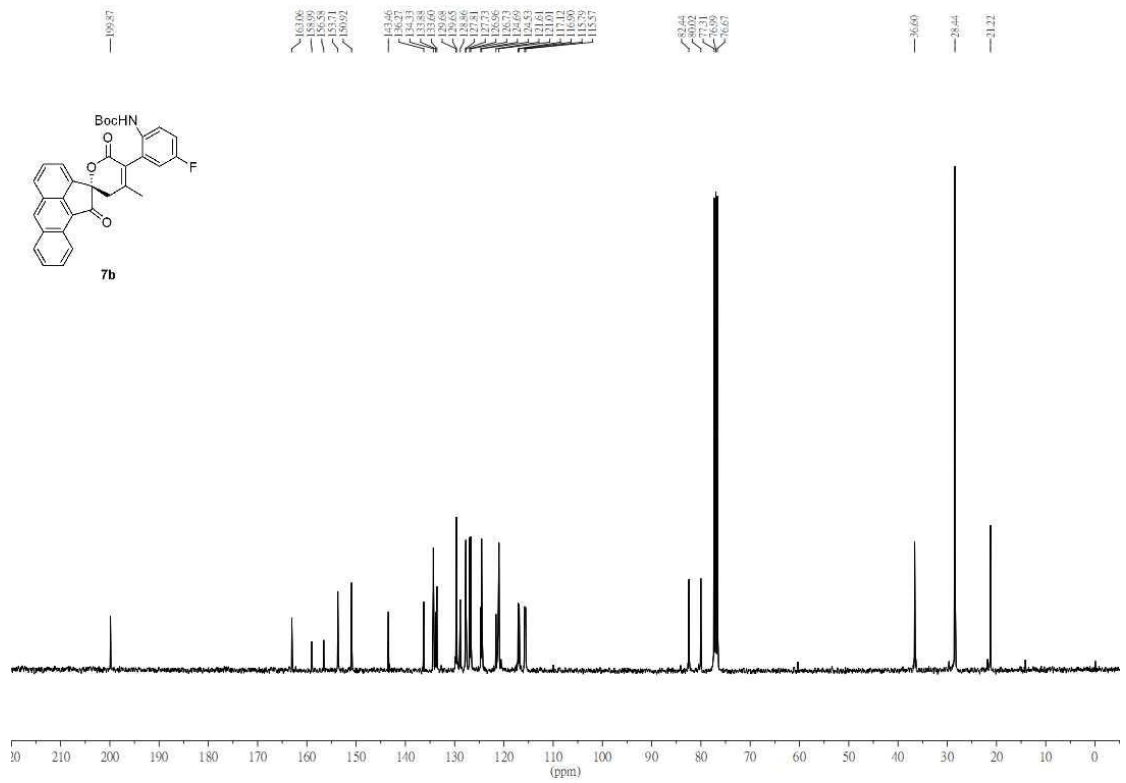
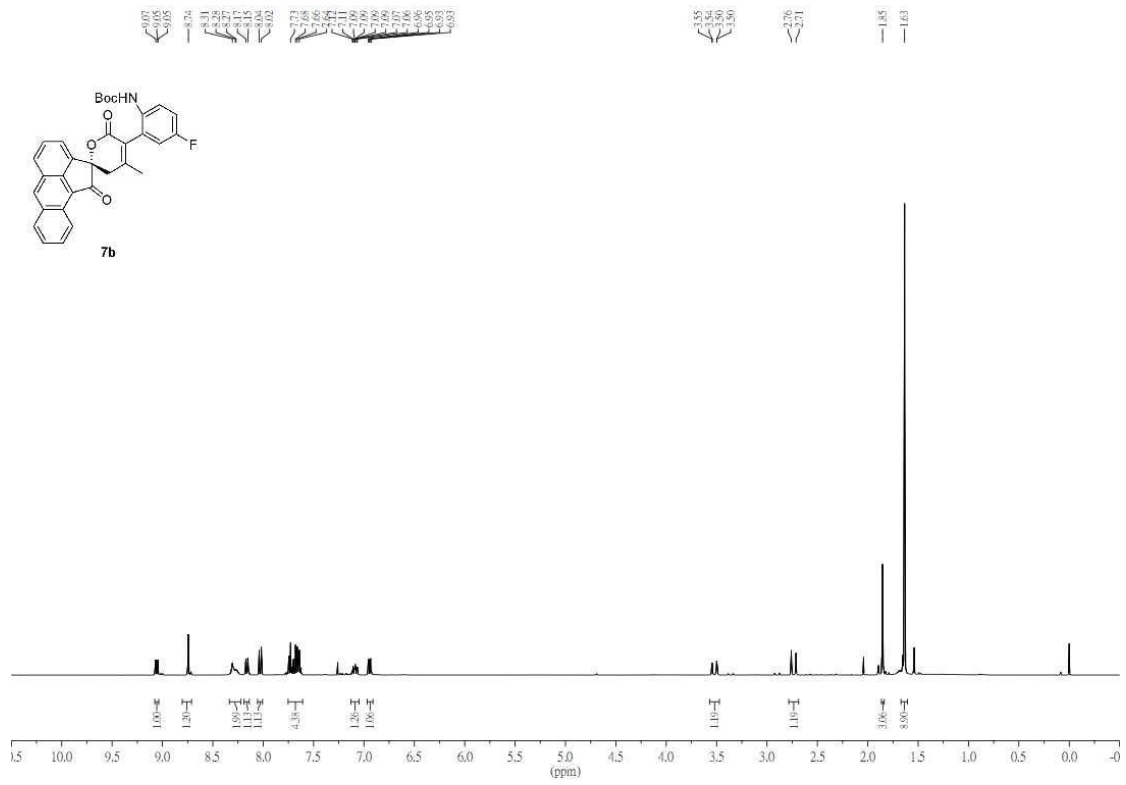


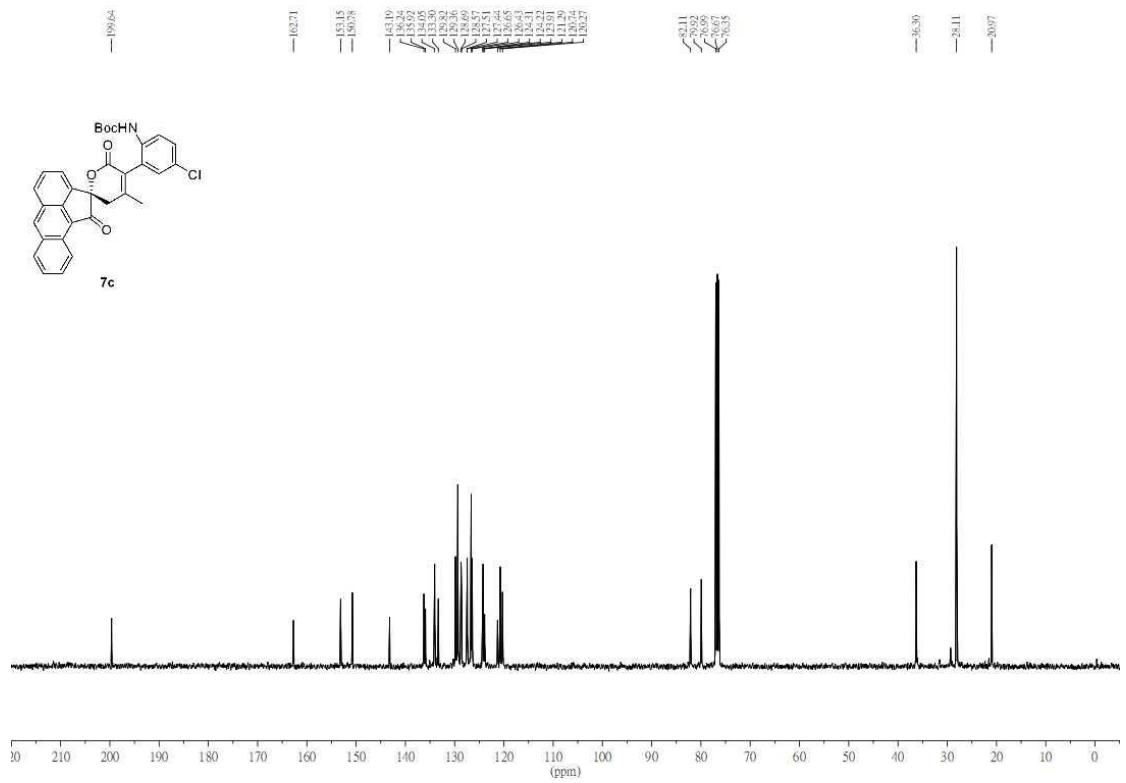
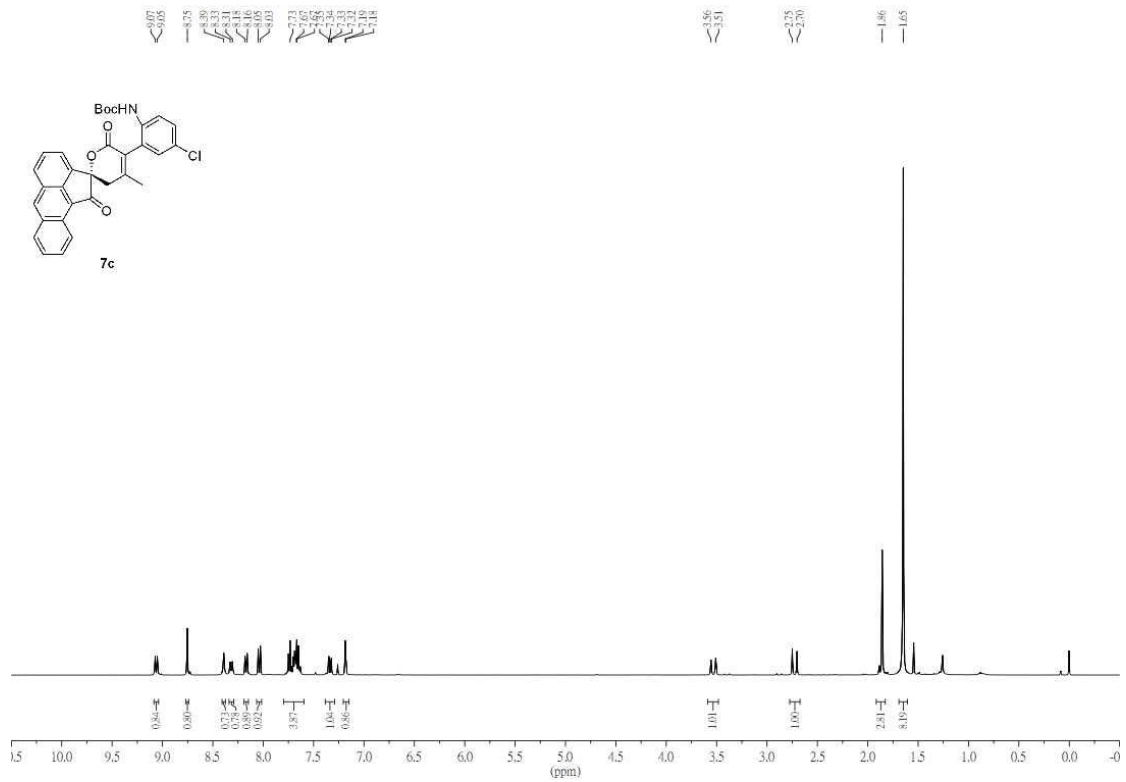


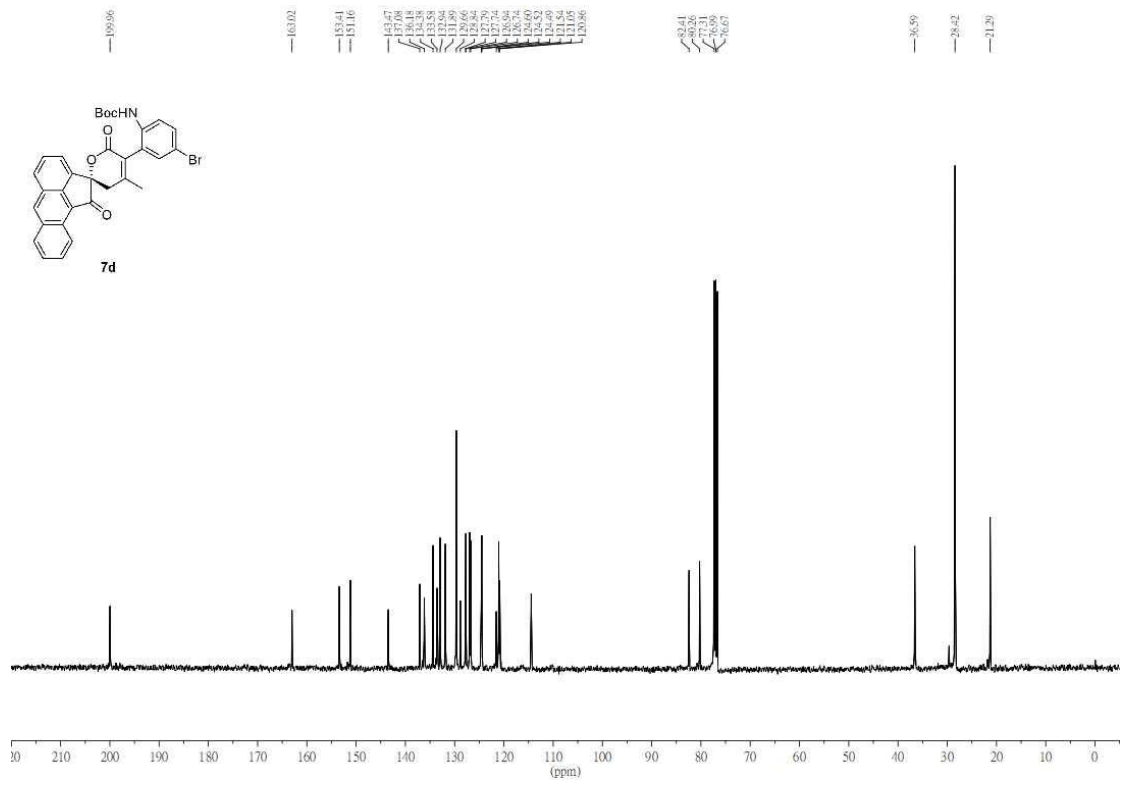
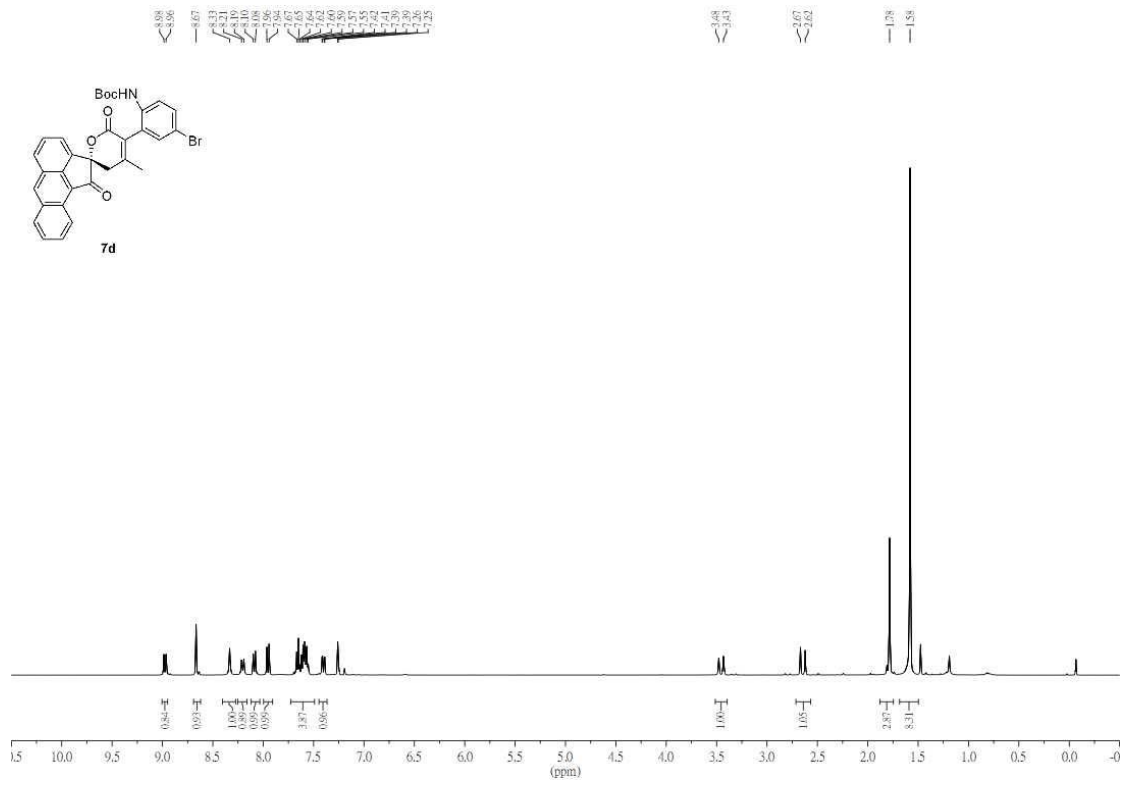


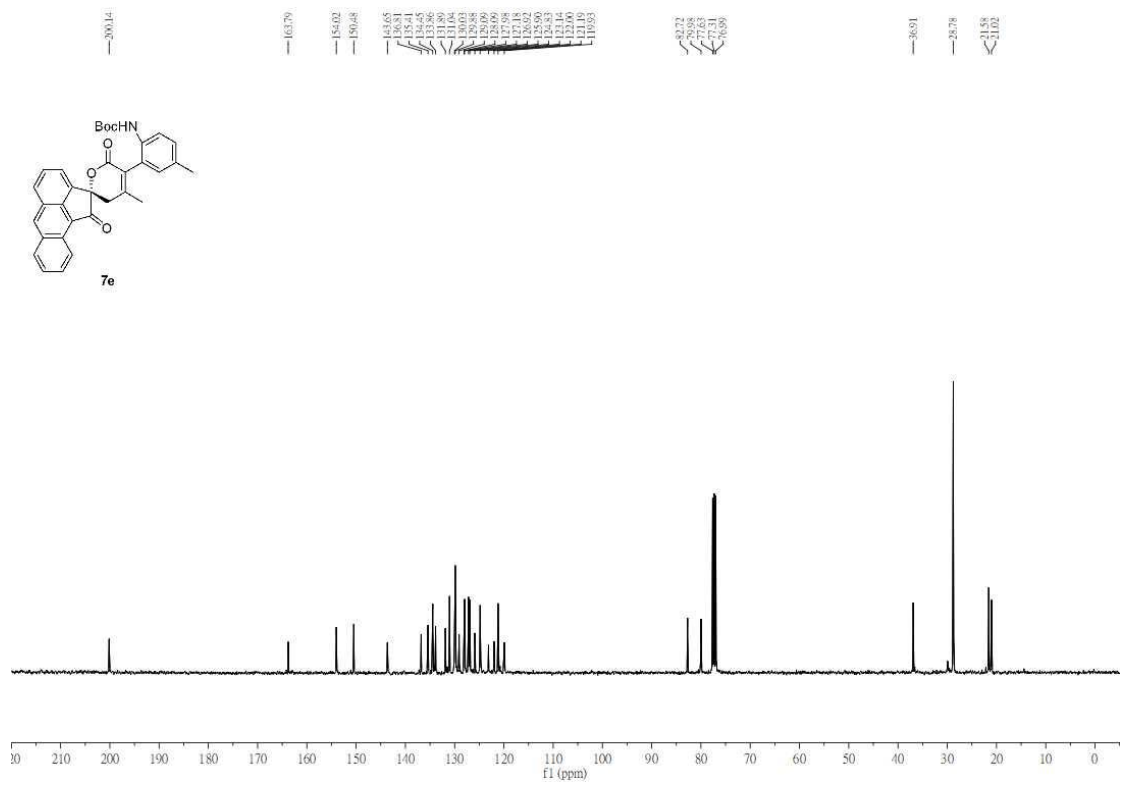
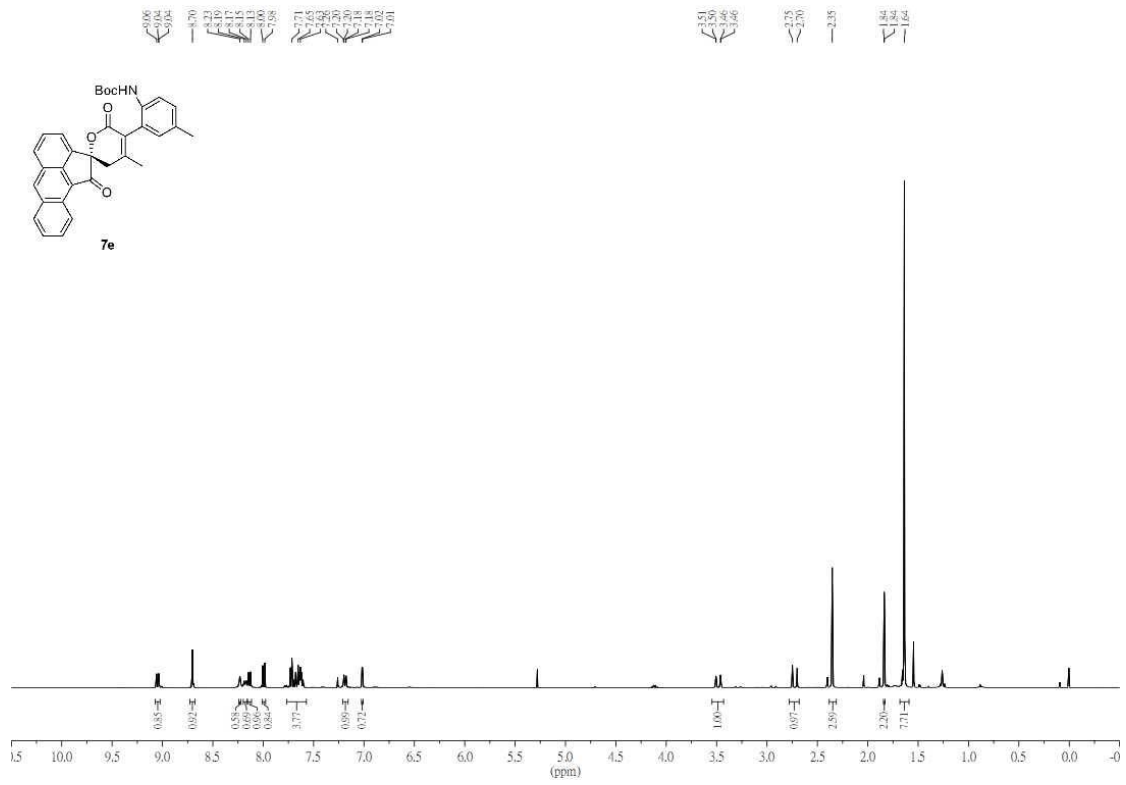


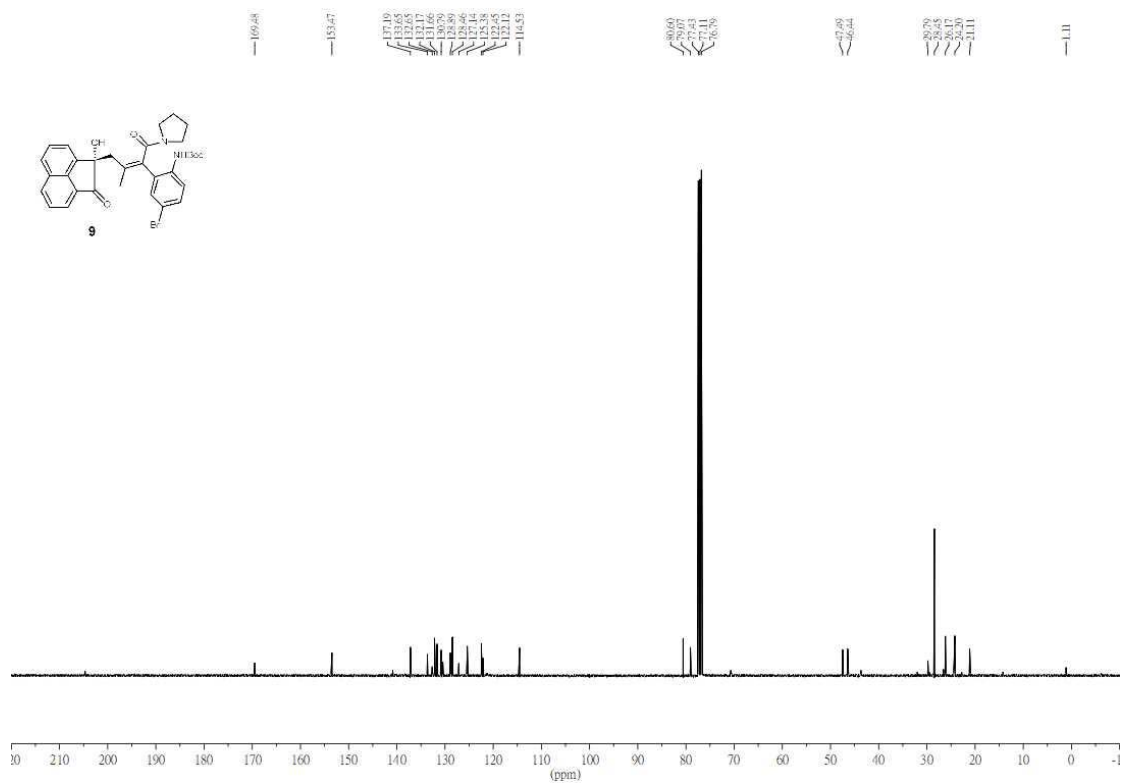
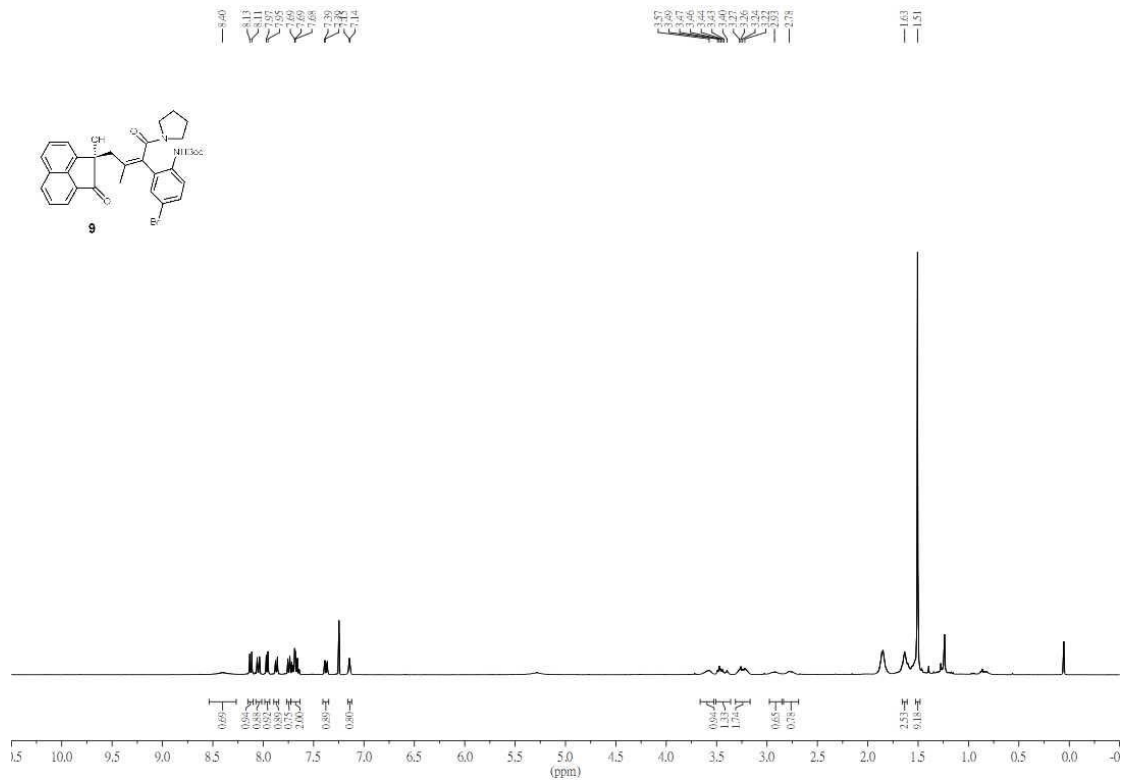






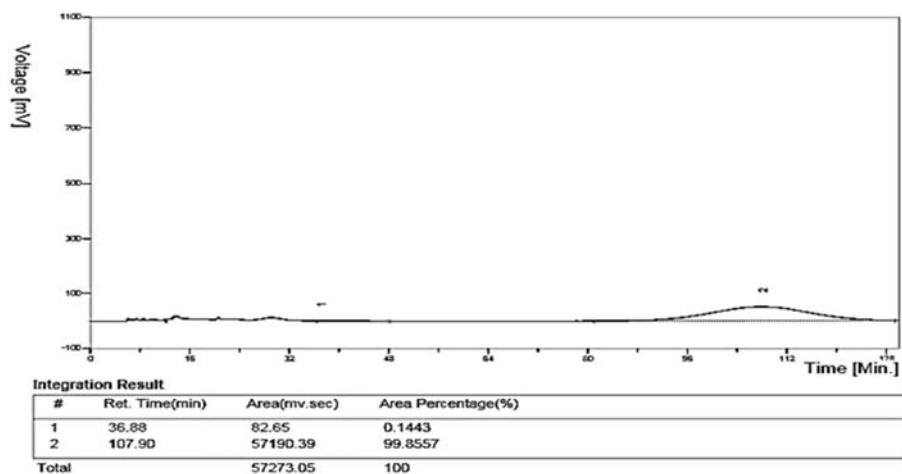




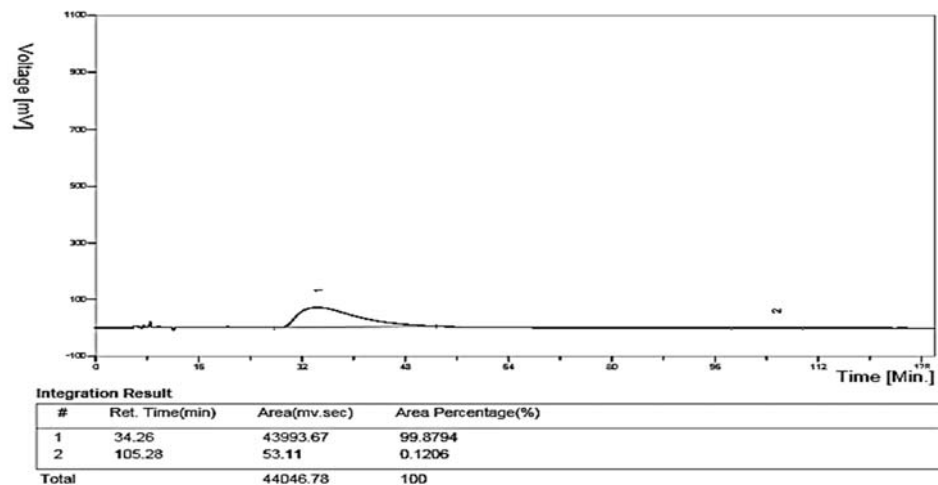


#### 4. Copies of HPLC Spectra of Products 3, 5, 7, and 9

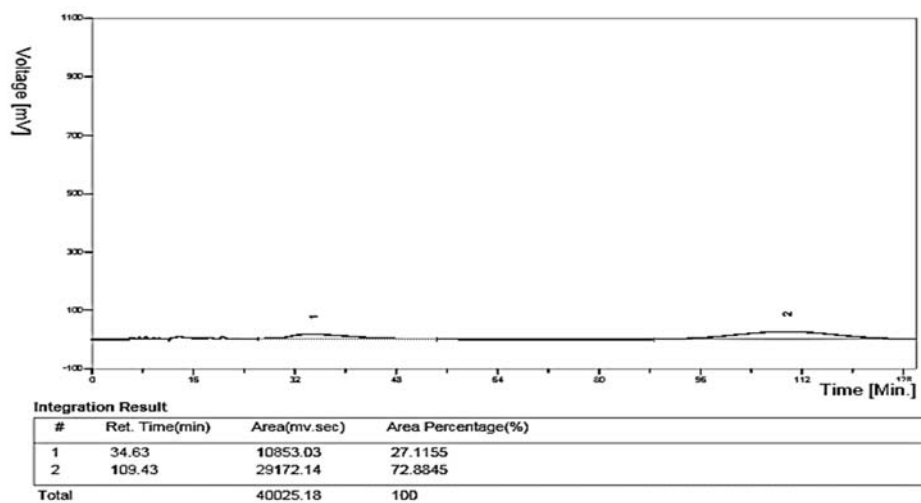
##### 3a



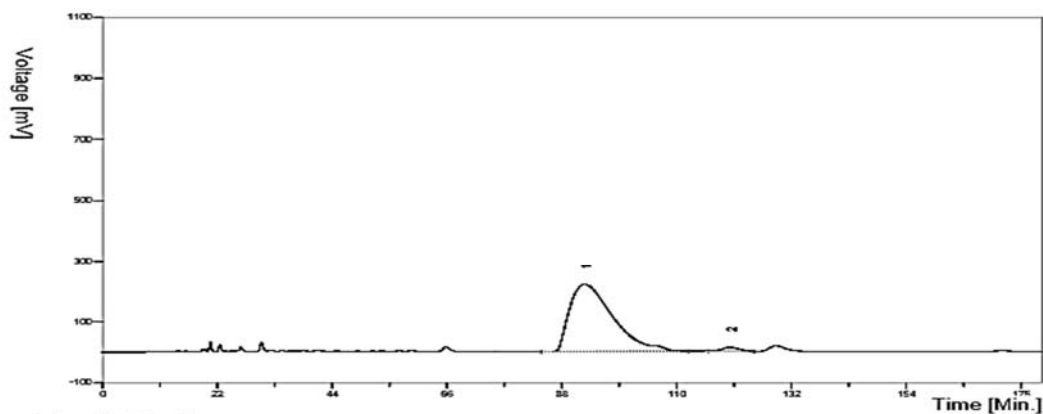
##### ent-3a



##### 3a + ent-3a as rac-3a



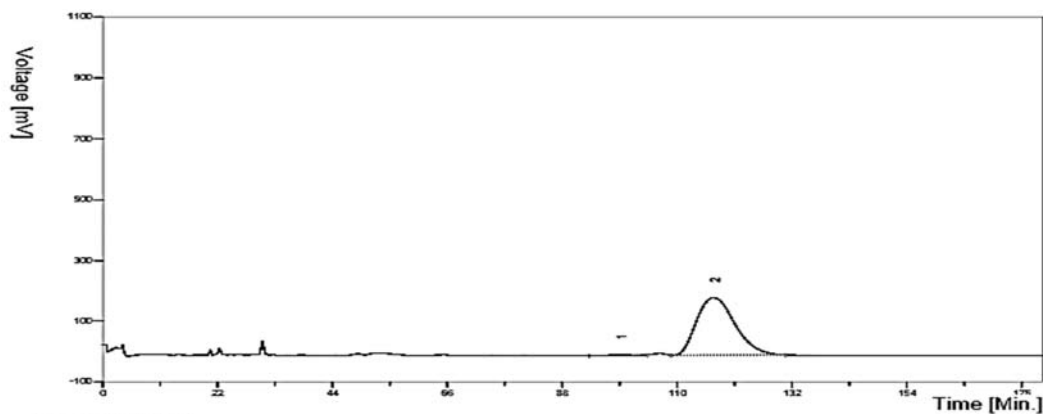
3b



Integration Result

#	Ret. Time(min)	Area(mv.sec)	Area Percentage(%)
1	92.39	126399.06	97.9389
2	120.21	2659.99	2.0611
Total		129059.05	100

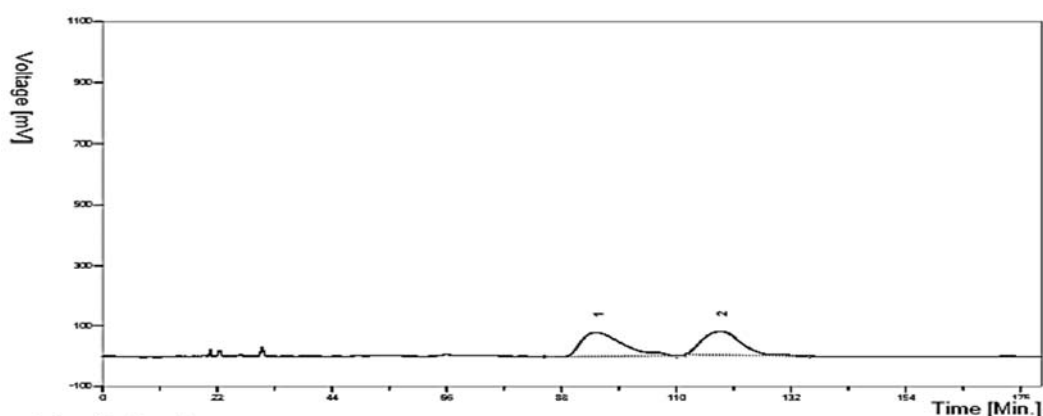
ent-3b



Integration Result

#	Ret. Time(min)	Area(mv.sec)	Area Percentage(%)
1	98.93	281.73	0.2939
2	116.97	95573.77	99.7061
Total		95855.50	100

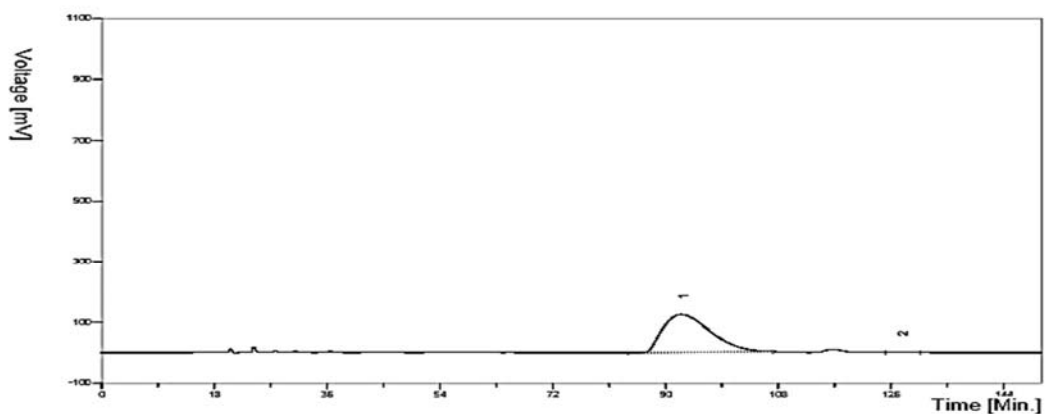
3b + ent-3b as rac-3b



Integration Result

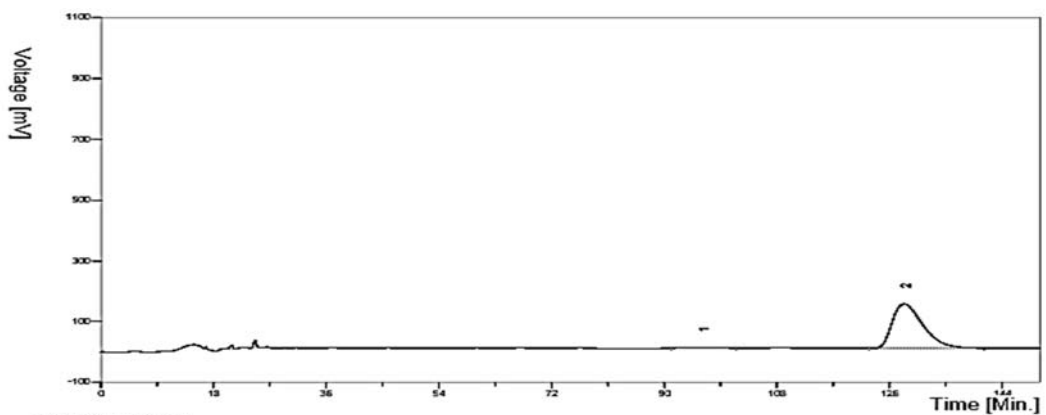
#	Ret. Time(min)	Area(mv.sec)	Area Percentage(%)
1	94.71	42958.30	51.3889
2	118.41	40636.21	48.6111
Total		83594.52	100

3c



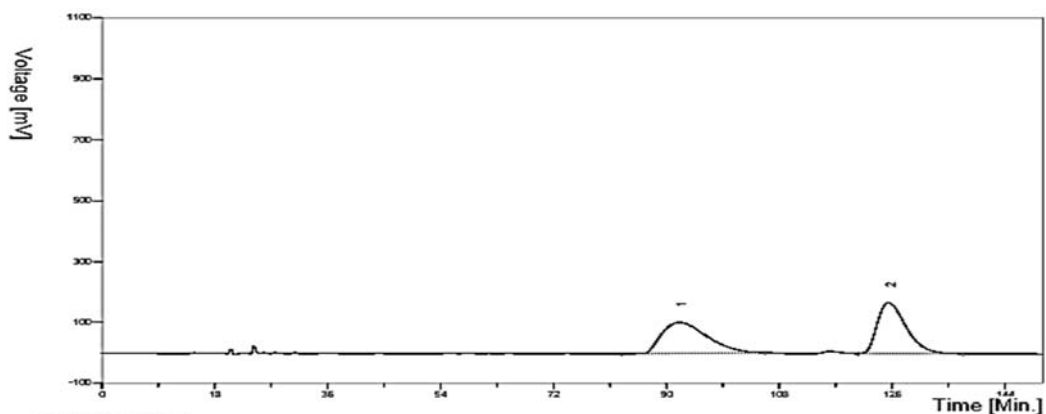
Integration Result			
#	Ret. Time(min)	Area(mv.sec)	Area Percentage(%)
1	92.56	64827.06	99.4966
2	127.56	328.01	0.5034
Total		65155.07	100

ent-3c



Integration Result			
#	Ret. Time(min)	Area(mv.sec)	Area Percentage(%)
1	96.06	671.71	1.3389
2	128.32	49497.97	98.6611
Total		50169.68	100

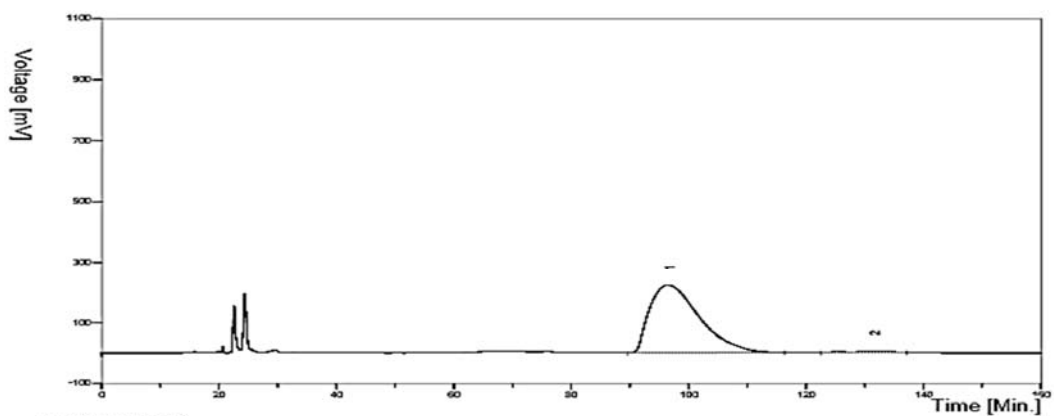
3c + ent-3c as rac-3c



Integration Result			
#	Ret. Time(min)	Area(mv.sec)	Area Percentage(%)
1	92.09	50682.83	48.8436
2	125.49	53082.78	51.1564
Total		103765.61	100



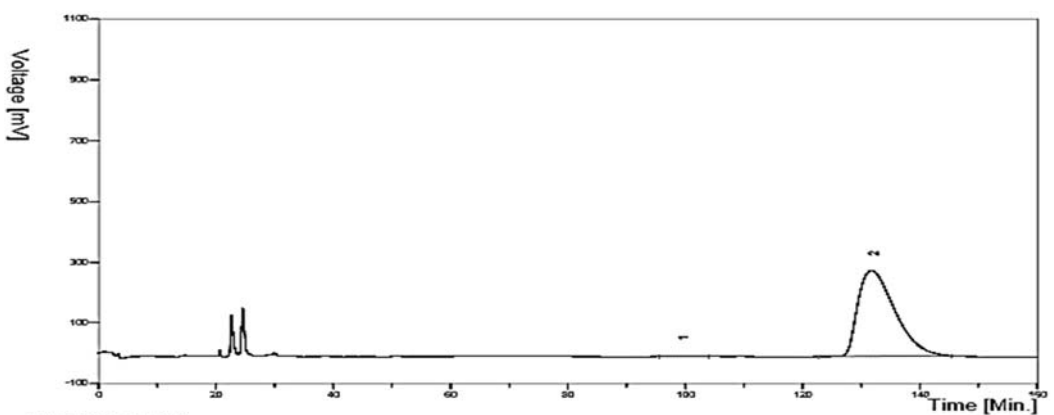
3d



Integration Result

#	Ret. Time(min)	Area(mv.sec)	Area Percentage(%)
1	96.44	131181.99	98.3963
2	131.44	2138.09	1.6037
Total		133320.08	100

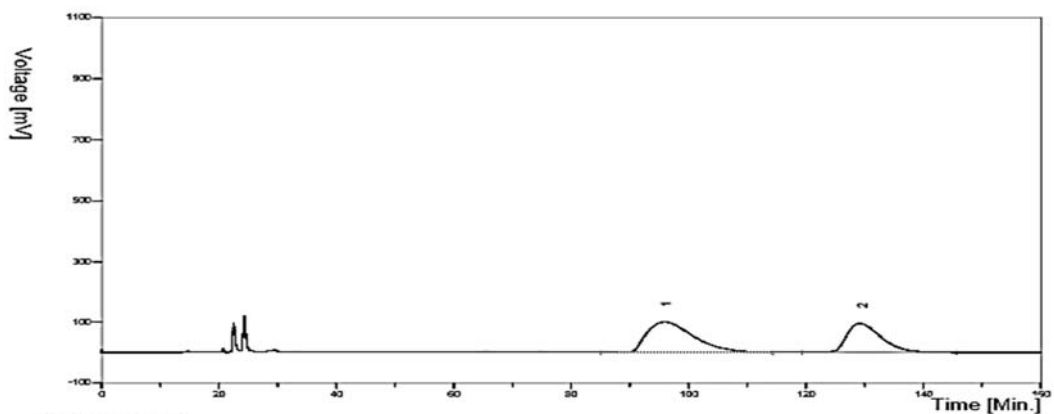
ent-3d



Integration Result

#	Ret. Time(min)	Area(mv.sec)	Area Percentage(%)
1	99.34	420.62	0.3409
2	131.77	122978.65	99.6591
Total		123399.26	100

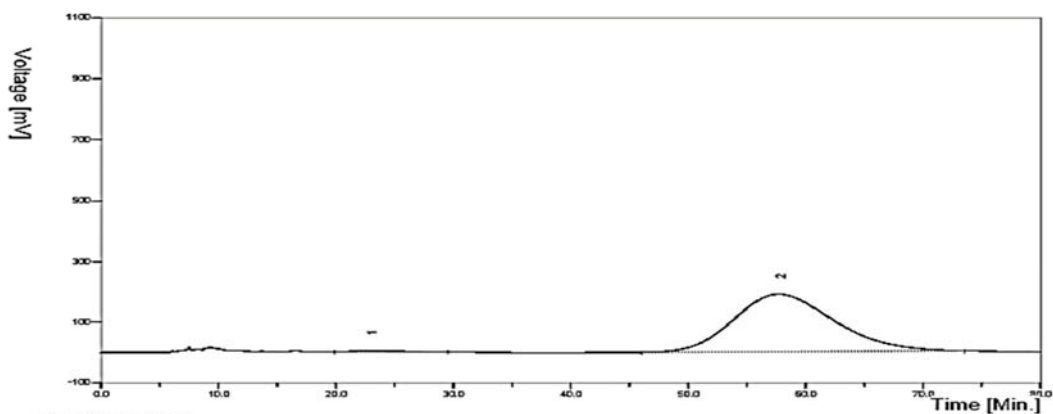
3d + ent-3d as rac-3d



Integration Result

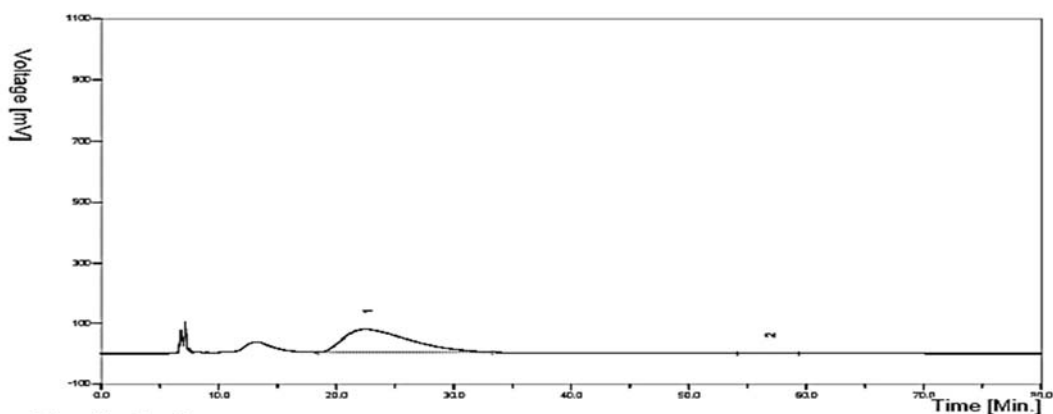
#	Ret. Time(min)	Area(mv.sec)	Area Percentage(%)
1	95.85	54609.33	58.6591
2	129.26	38486.79	41.3409
Total		93096.13	100

3e



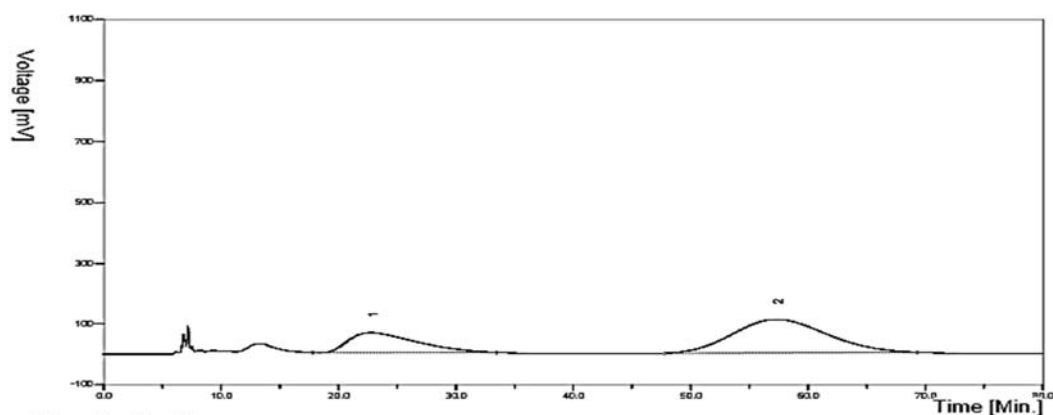
Integration Result			
#	Ret. Time(min)	Area(mv.sec)	Area Percentage(%)
1	22.91	1006.99	0.8903
2	57.70	112099.25	99.1097
Total		113106.24	100

ent-3e



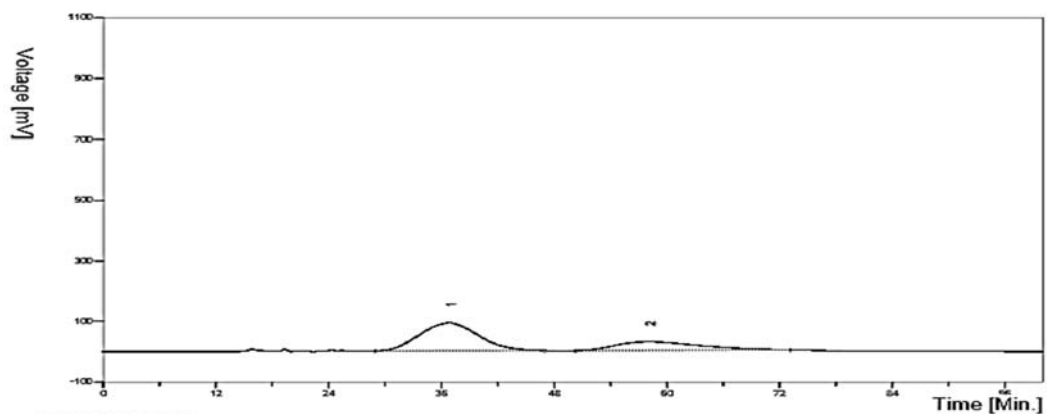
Integration Result			
#	Ret. Time(min)	Area(mv.sec)	Area Percentage(%)
1	22.53	29180.28	99.7736
2	56.79	66.21	0.2264
Total		29246.48	100

3e + ent-3e as rac-3e



Integration Result			
#	Ret. Time(min)	Area(mv.sec)	Area Percentage(%)
1	22.79	25920.35	29.8296
2	57.29	60974.30	70.1704
Total		86894.65	100

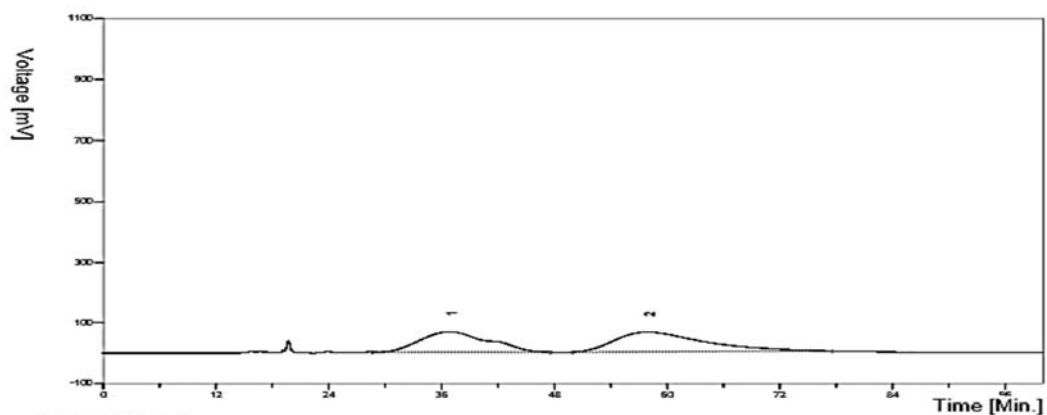
3f



Integration Result

#	Ret. Time(min)	Area(mv.sec)	Area Percentage(%)
1	36.86	39447.07	69.1205
2	58.08	17622.89	30.8795
Total		57069.96	100

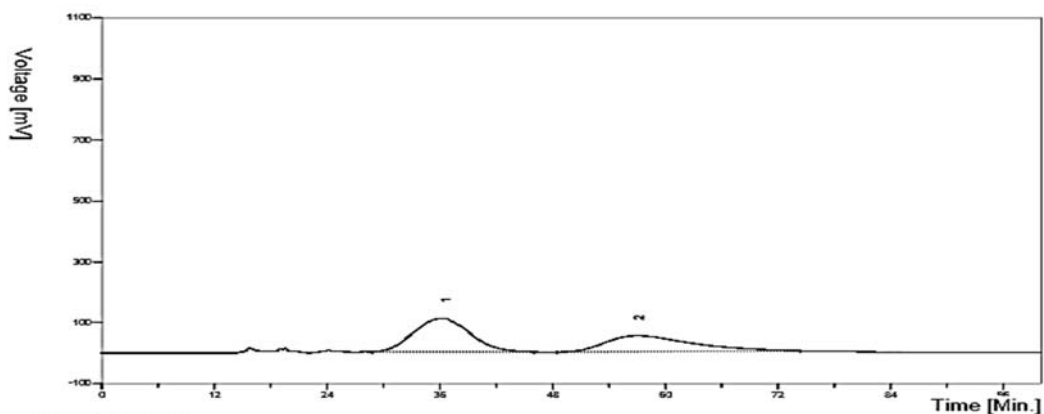
ent-3f



Integration Result

#	Ret. Time(min)	Area(mv.sec)	Area Percentage(%)
1	36.87	33265.73	43.8011
2	57.94	42681.53	56.1989
Total		75947.26	100

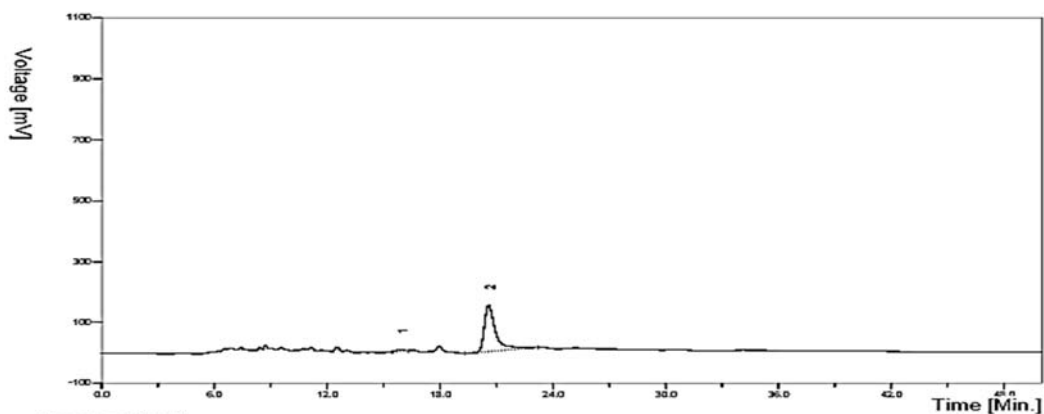
3f + ent-3f as rac-3f



Integration Result

#	Ret. Time(min)	Area(mv.sec)	Area Percentage(%)
1	36.46	45222.75	57.7838
2	57.00	33039.24	42.2162
Total		78261.99	100

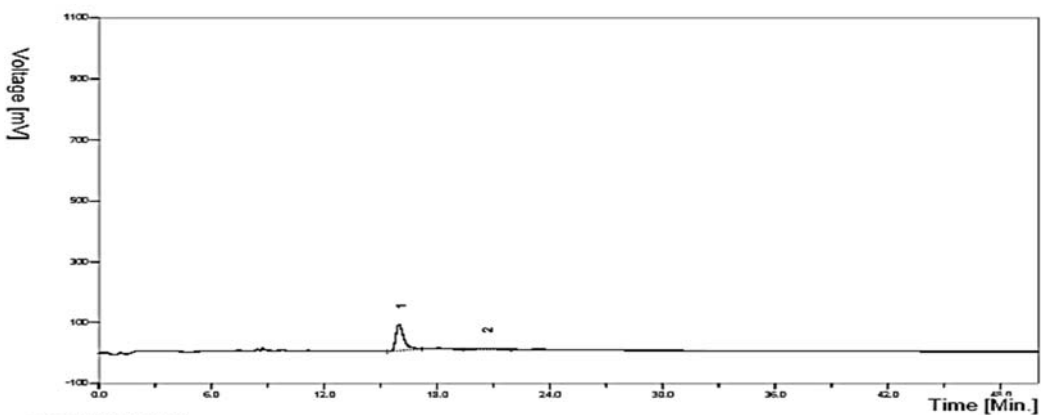
3g



Integration Result

#	Ret. Time(min)	Area(mv.sec)	Area Percentage(%)
1	15.92	151.26	2.4643
2	20.58	5986.88	97.5357
Total		6138.14	100

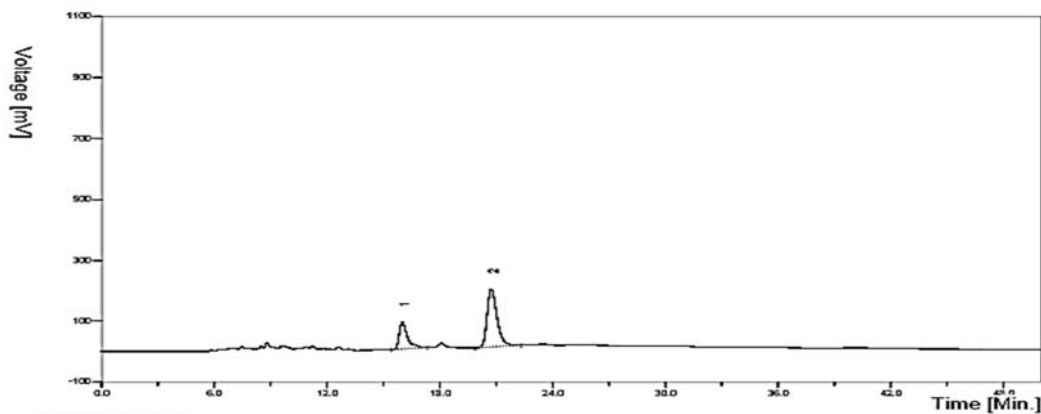
ent-3g



Integration Result

#	Ret. Time(min)	Area(mv.sec)	Area Percentage(%)
1	15.98	2486.66	93.8358
2	20.59	163.35	6.1642
Total		2650.01	100

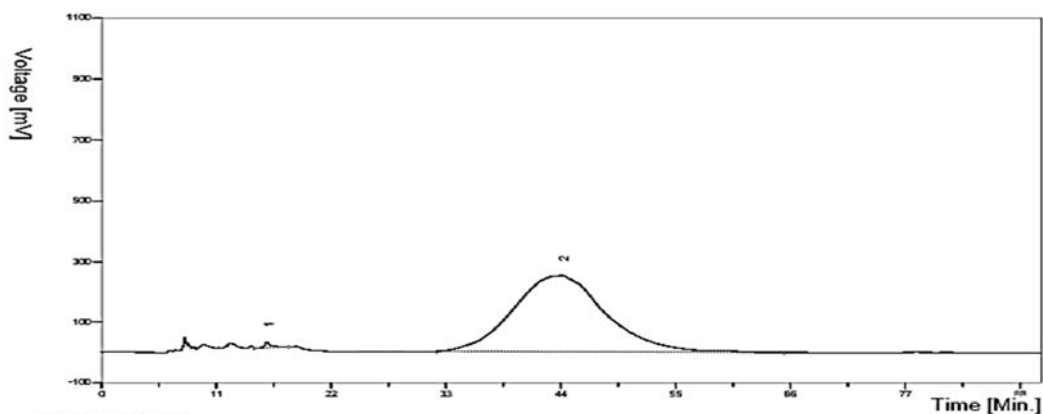
3g + ent-3g as rac-3g



Integration Result

#	Ret. Time(min)	Area(mv.sec)	Area Percentage(%)
1	16.01	2644.06	27.6505
2	20.74	6918.35	72.3495
Total		9562.40	100

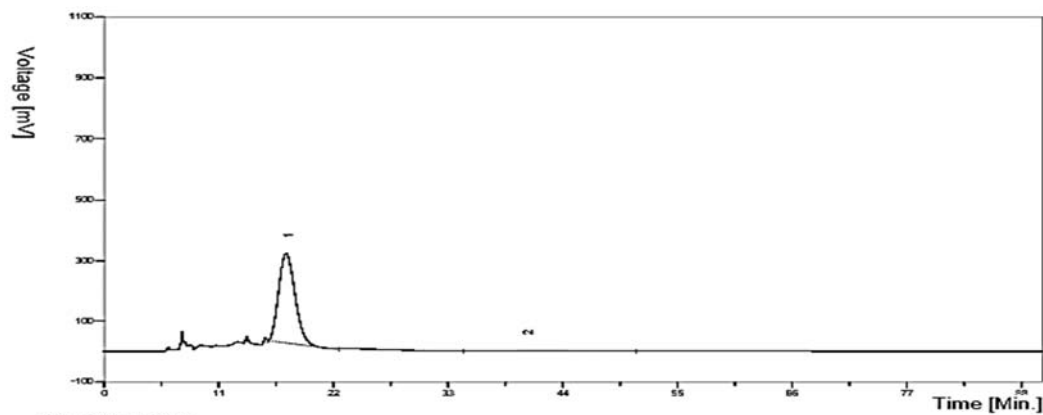
3h



Integration Result

#	Ret. Time(min)	Area(mv.sec)	Area Percentage(%)
1	15.85	611.00	0.3952
2	44.11	153989.31	99.6048
Total		154600.31	100

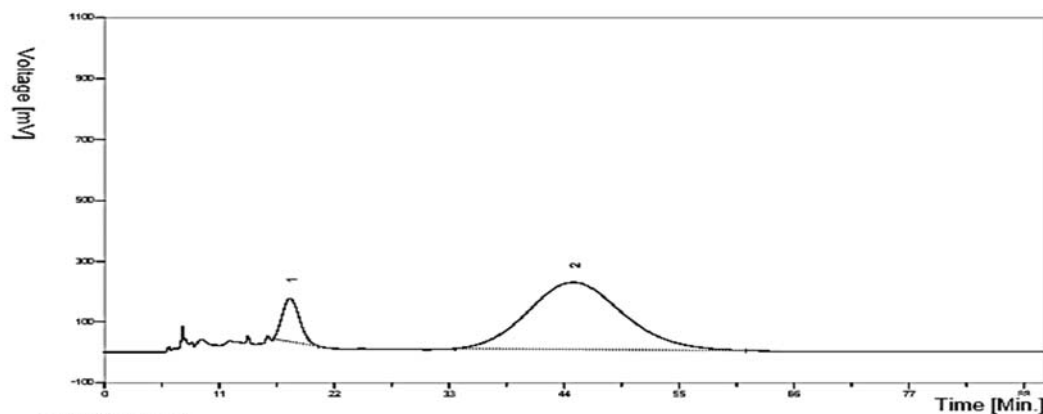
ent-3h



Integration Result

#	Ret. Time(min)	Area(mv.sec)	Area Percentage(%)
1	17.46	31751.05	97.4607
2	40.50	827.28	2.5393
Total		32578.32	100

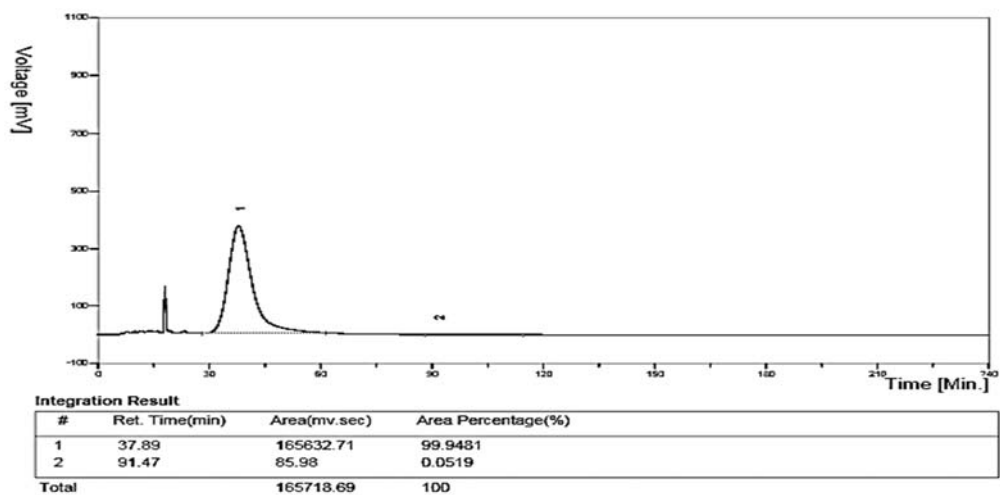
3h + ent-3h as rac-3h



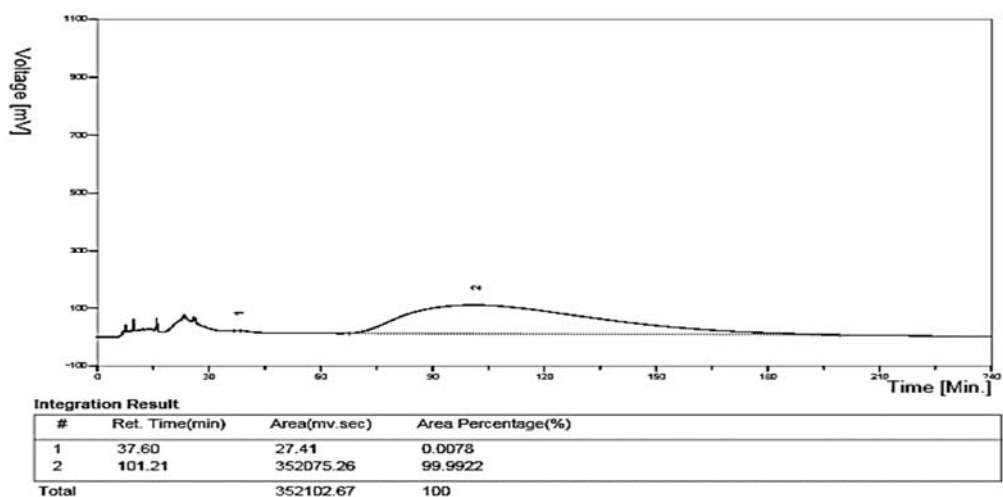
Integration Result

#	Ret. Time(min)	Area(mv.sec)	Area Percentage(%)
1	17.76	16231.58	10.4396
2	44.87	139248.85	89.5604
Total		155480.44	100

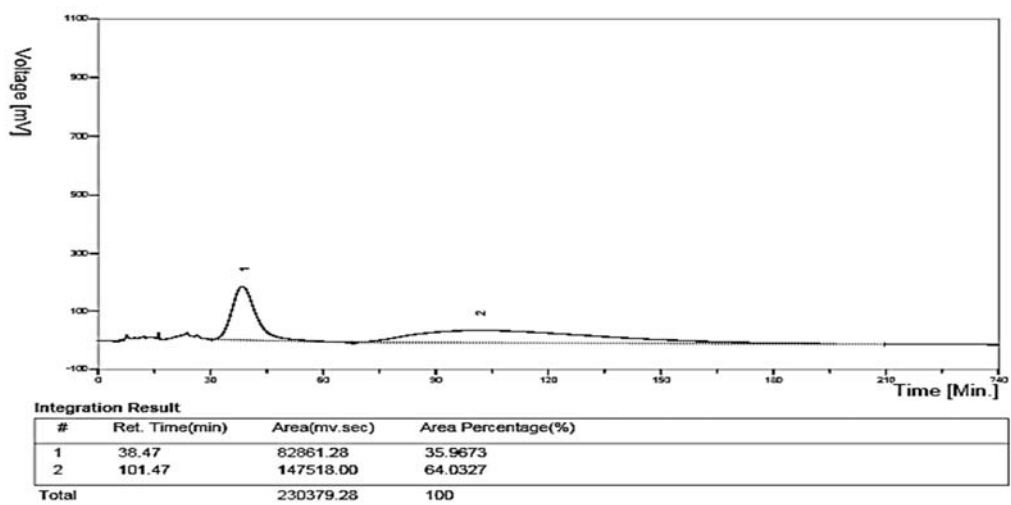
3i



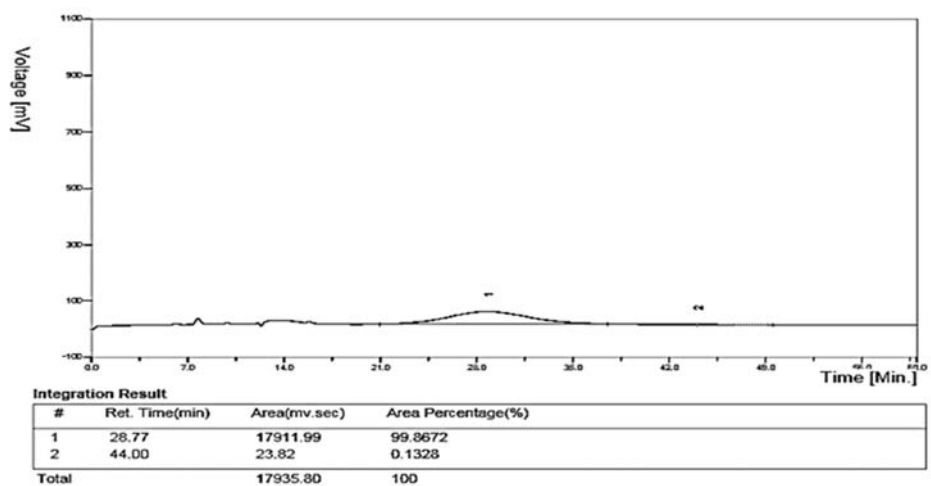
ent-3i



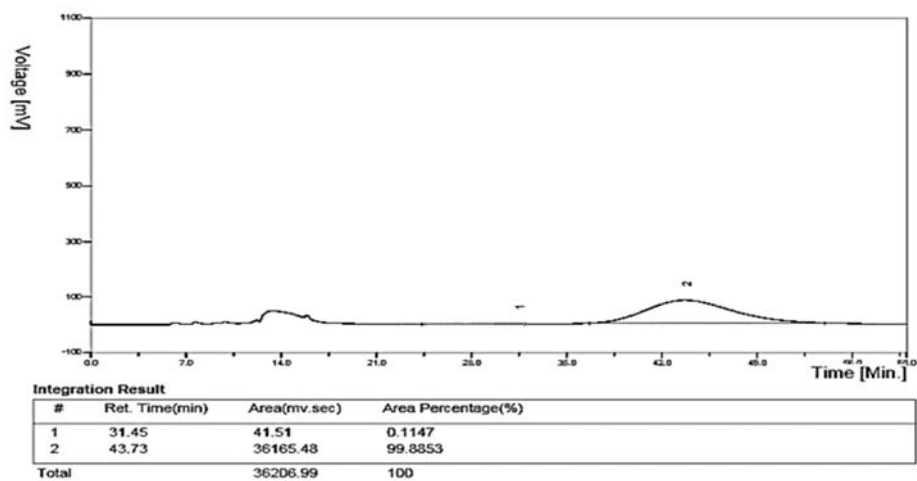
3i + ent-3i as rac-3i



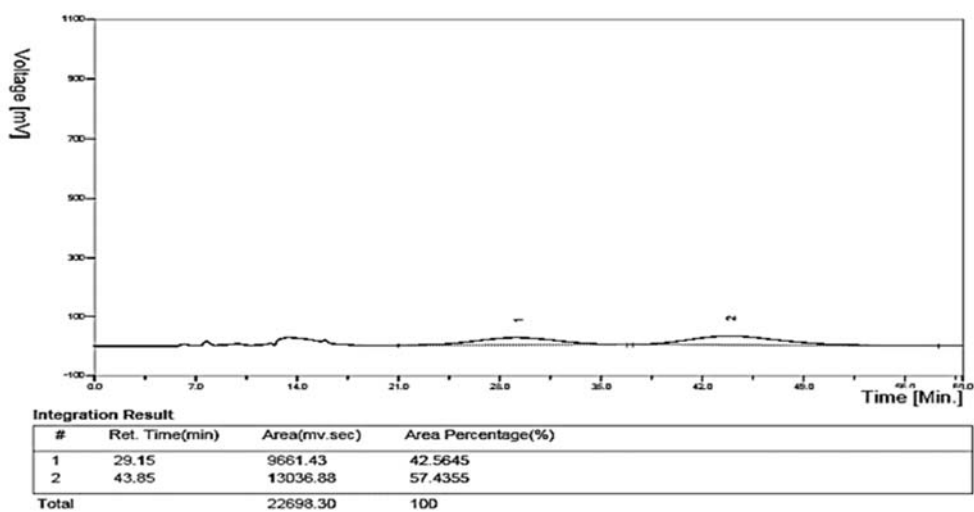
3j



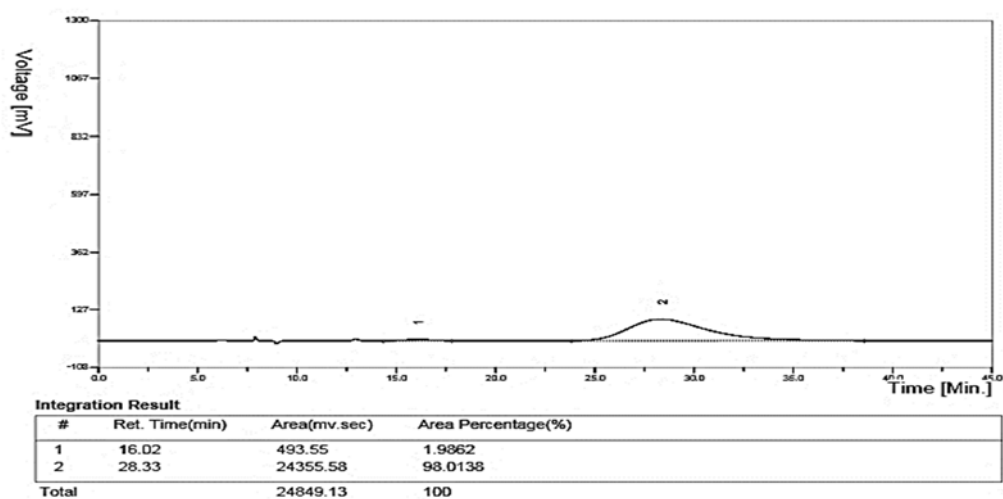
ent-3j



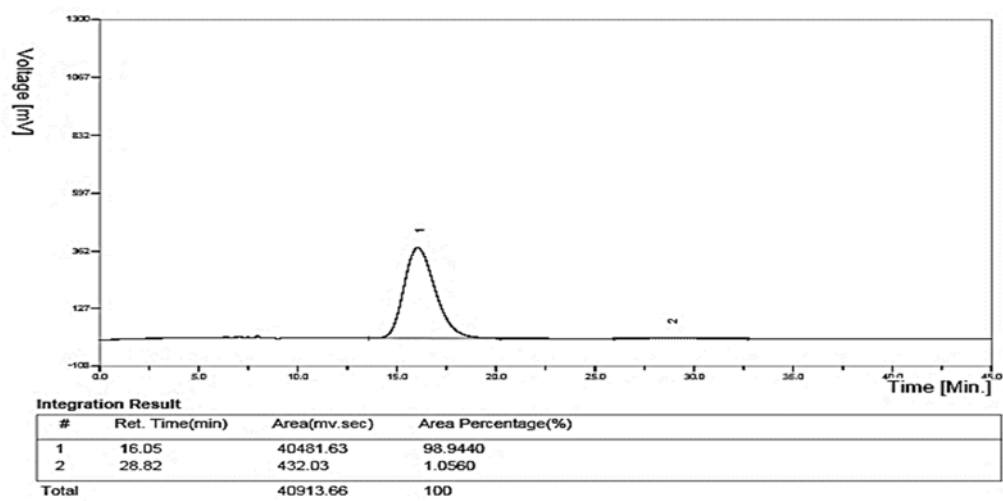
3j + ent-3j as rac-3j



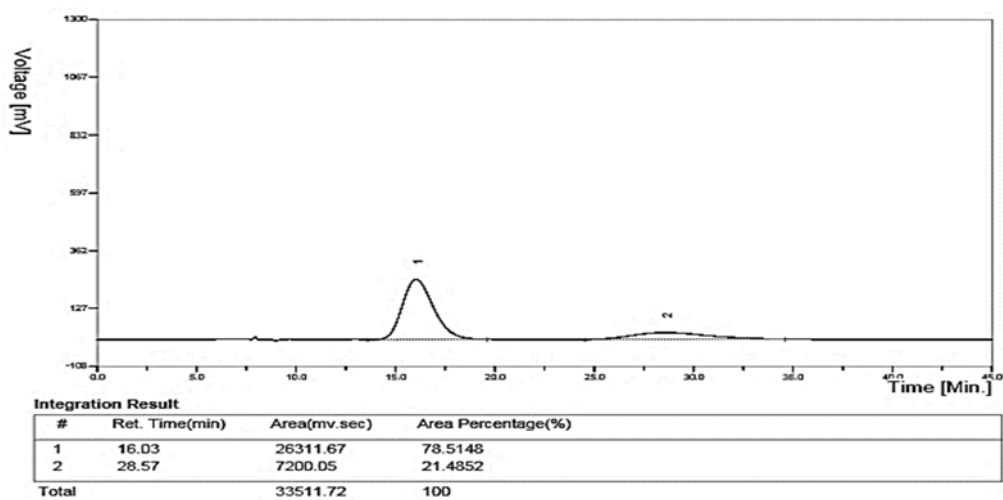
5a



ent-5a

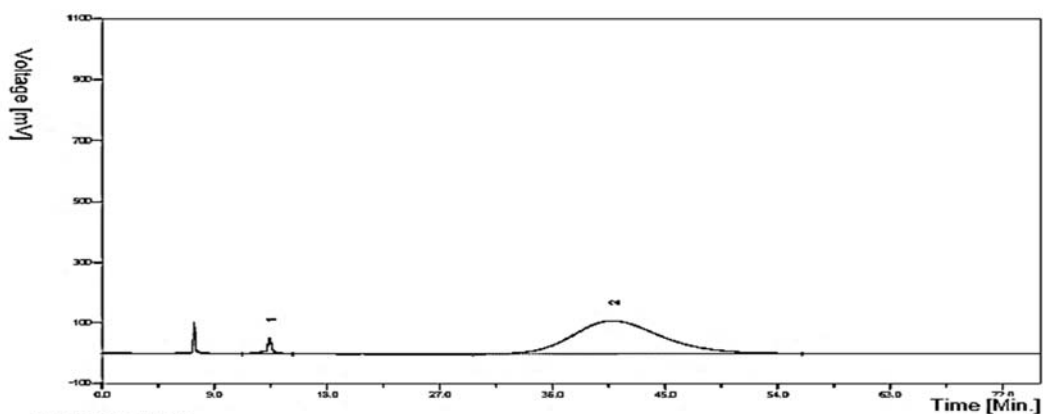


5a + ent-5a as rac-5a



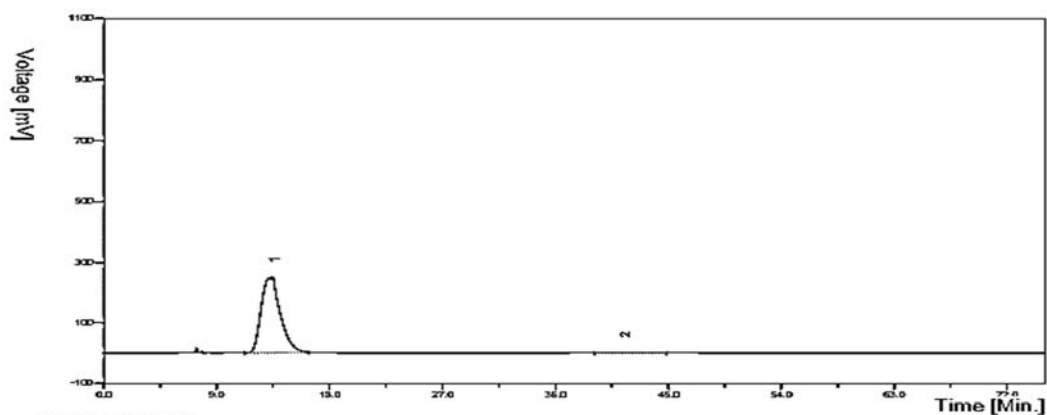


5b



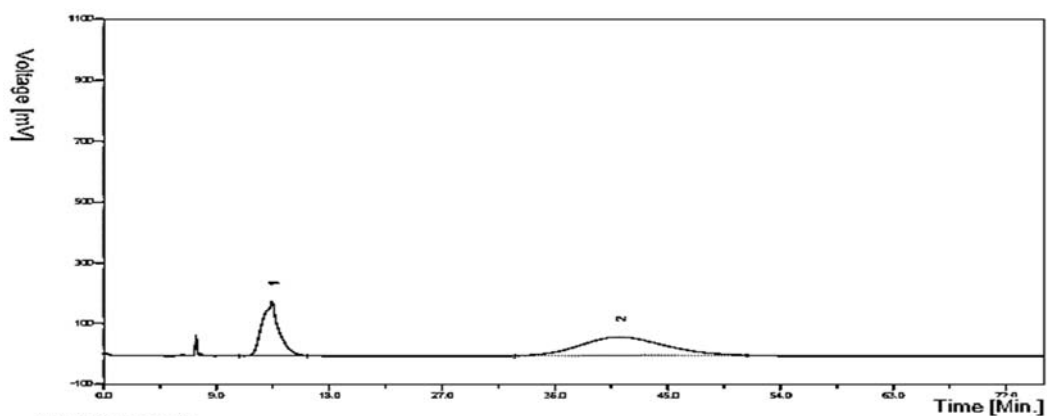
Integration Result			
#	Ret. Time(min)	Area(mv.sec)	Area Percentage(%)
1	13.41	1574.23	2.8151
2	40.80	54347.03	97.1849
Total		55921.26	100

ent-5b



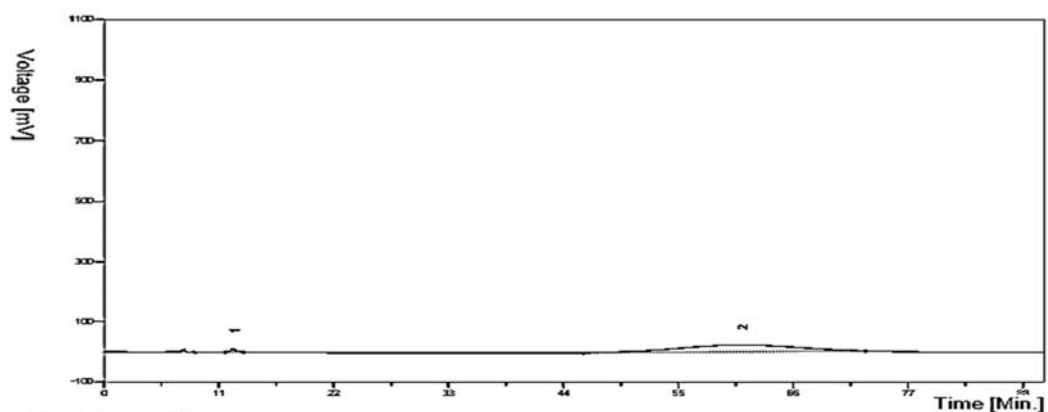
Integration Result			
#	Ret. Time(min)	Area(mv.sec)	Area Percentage(%)
1	13.45	26219.41	99.7747
2	41.39	59.19	0.2253
Total		26278.61	100

5b + ent-5b as rac-5b



Integration Result			
#	Ret. Time(min)	Area(mv.sec)	Area Percentage(%)
1	13.45	16282.21	36.4311
2	41.12	28410.89	63.5689
Total		44693.10	100

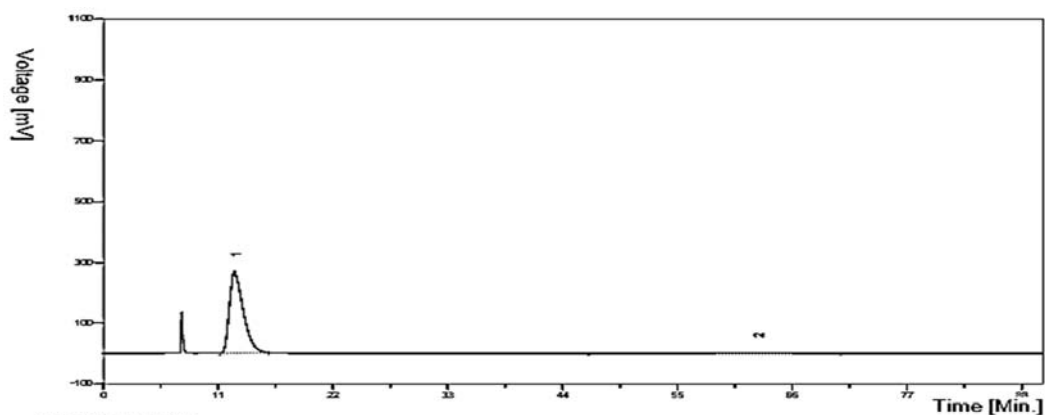
5c



**Integration Result**

#	Ret. Time(min)	Area(mv.sec)	Area Percentage(%)
1	12.35	347.30	1.9427
2	60.99	17530.08	98.0573
<b>Total</b>		<b>17877.38</b>	<b>100</b>

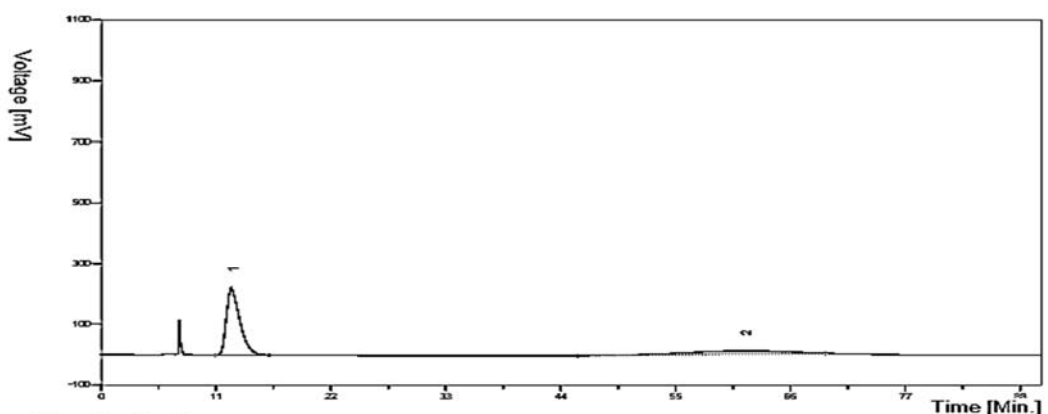
ent-5c



**Integration Result**

#	Ret. Time(min)	Area(mv.sec)	Area Percentage(%)
1	12.54	24456.01	98.9726
2	62.59	253.86	1.0274
<b>Total</b>		<b>24709.88</b>	<b>100</b>

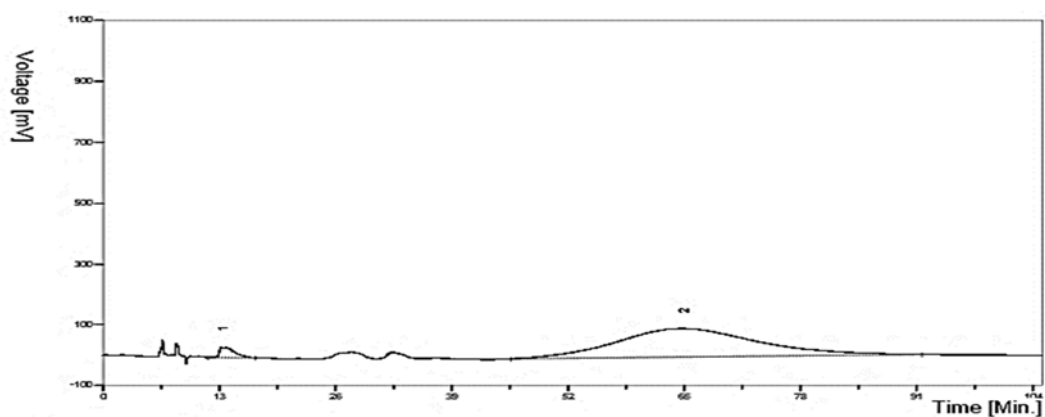
5c + ent-5c as rac-5c



**Integration Result**

#	Ret. Time(min)	Area(mv.sec)	Area Percentage(%)
1	12.44	19422.09	74.8564
2	61.57	6523.71	25.1436
<b>Total</b>		<b>25945.79</b>	<b>100</b>

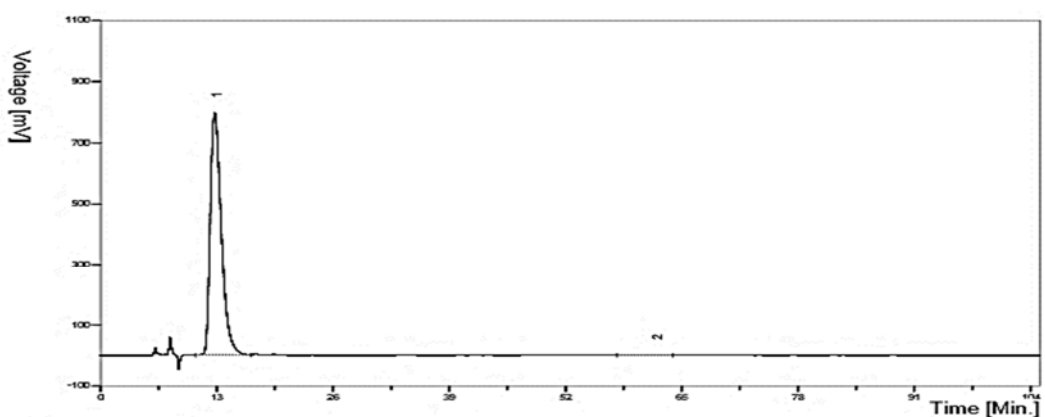
5d



Integration Result

#	Ret. Time(min)	Area(mv.sec)	Area Percentage(%)
1	13.18	3855.33	3.6185
2	64.72	102689.15	96.3815
Total		106544.48	100

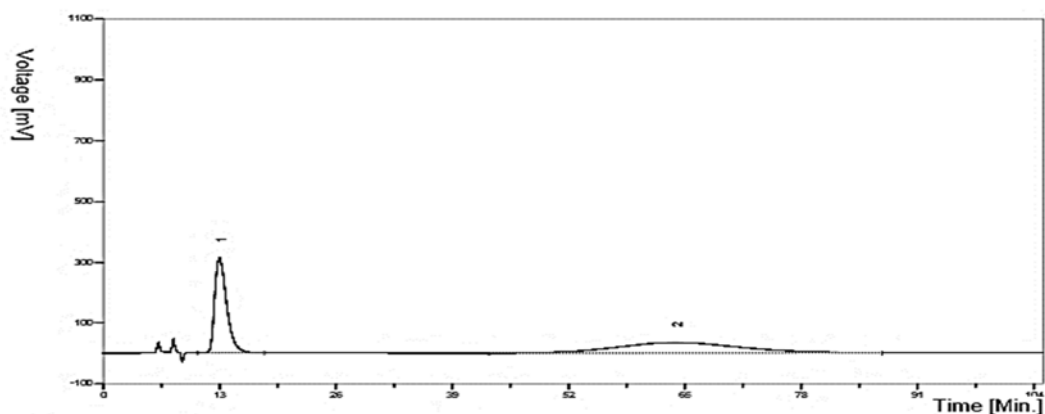
ent-5d



Integration Result

#	Ret. Time(min)	Area(mv.sec)	Area Percentage(%)
1	12.77	68411.24	99.9047
2	62.06	65.27	0.0953
Total		68476.52	100

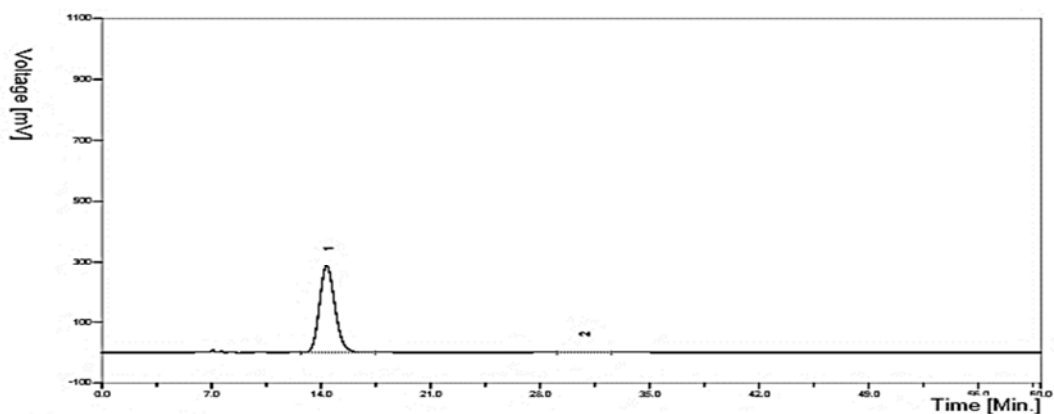
5d + ent-5d as rac-5d



Integration Result

#	Ret. Time(min)	Area(mv.sec)	Area Percentage(%)
1	12.97	29037.86	46.4210
2	63.92	33515.38	53.5790
Total		62553.24	100

5e

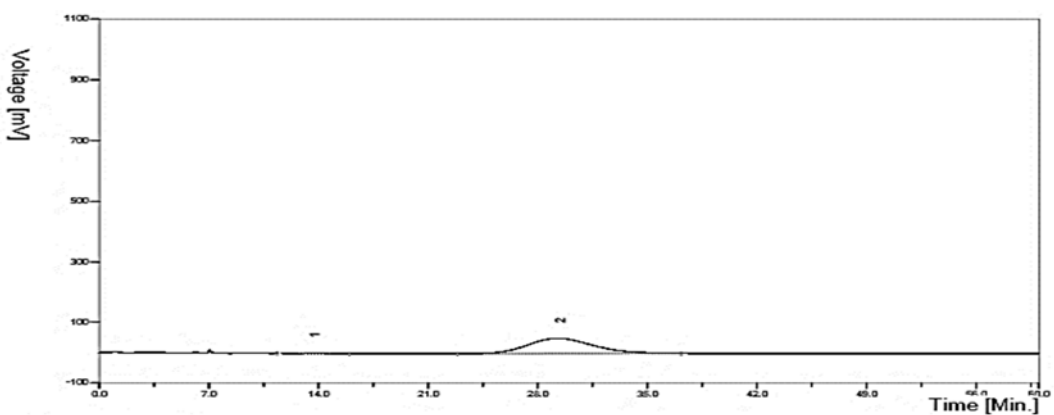


Integration Result

#	Ret. Time(min)	Area Percentage(%)
1	14.37	99.8378
2	30.72	0.1622

Total 100

ent-5e

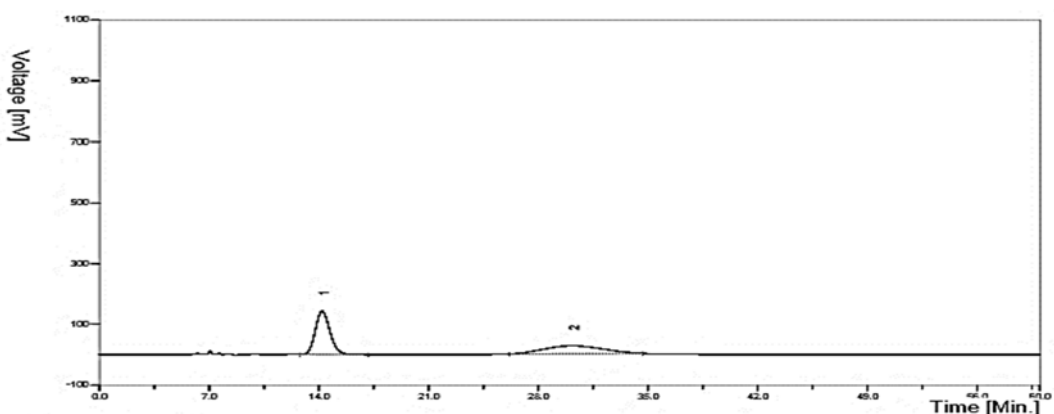


Integration Result

#	Ret. Time(min)	Area Percentage(%)
1	13.63	0.4790
2	29.31	99.5210

Total 100

5e + ent-5e as rac-5e

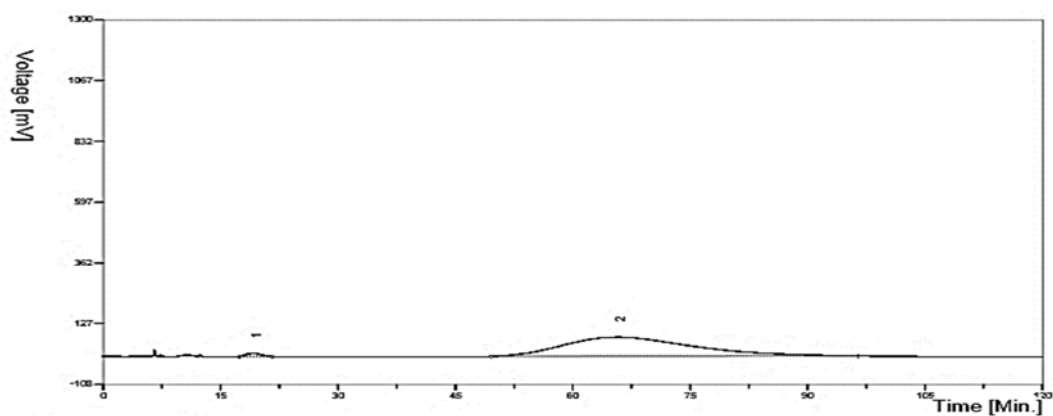


Integration Result

#	Ret. Time(min)	Area Percentage(%)
1	14.21	57.7961
2	30.15	42.2039

Total 100

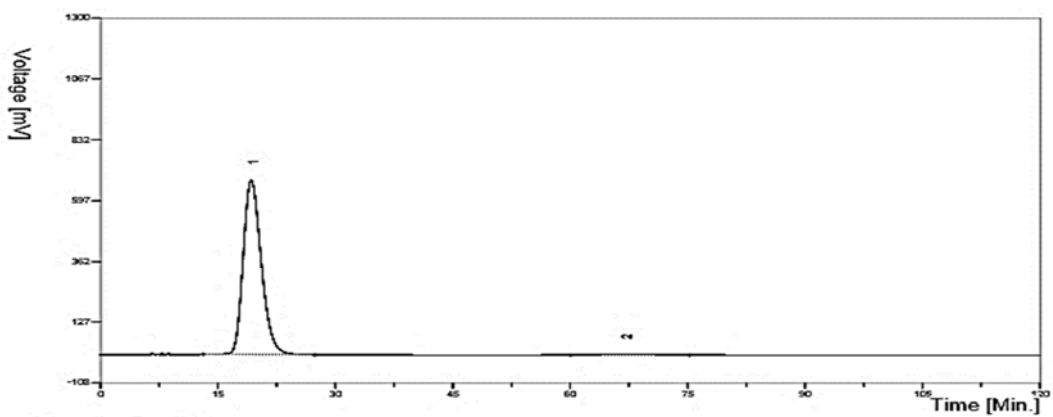
7a



Integration Result

#	Ret. Time(min)	Area(mv.sec)	Area Percentage(%)
1	19.32	1610.73	1.8863
2	65.84	83780.18	98.1137
Total		85390.91	100

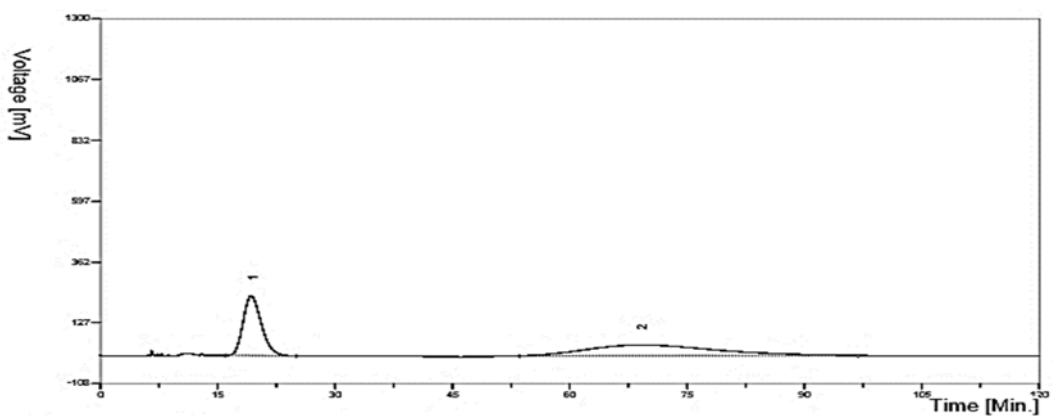
ent-7a



Integration Result

#	Ret. Time(min)	Area(mv.sec)	Area Percentage(%)
1	19.26	108276.60	99.4288
2	66.97	622.08	0.5712
Total		108898.68	100

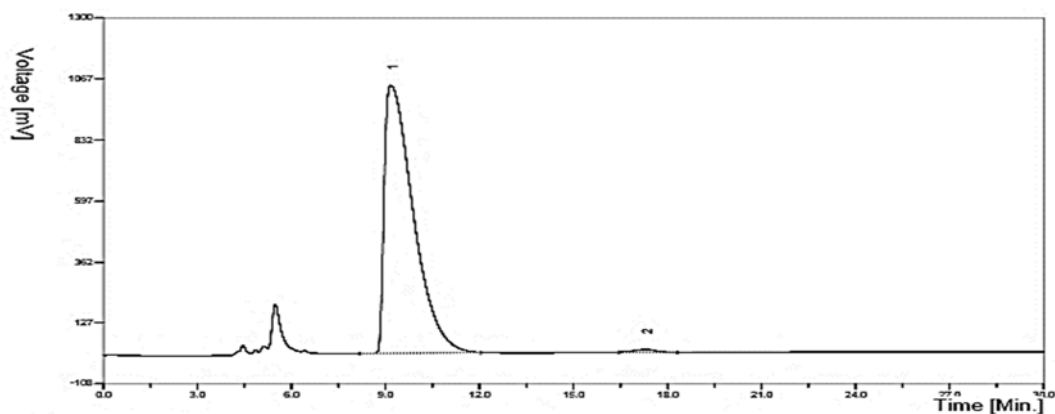
7a + ent-7a as rac-7a



Integration Result

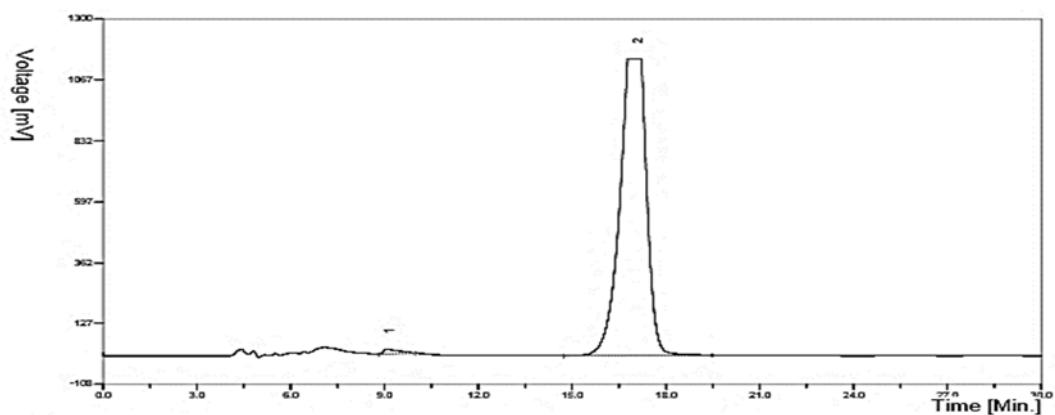
#	Ret. Time(min)	Area(mv.sec)	Area Percentage(%)
1	19.28	36962.67	43.8680
2	69.02	47296.26	56.1320
Total		84258.93	100

7b



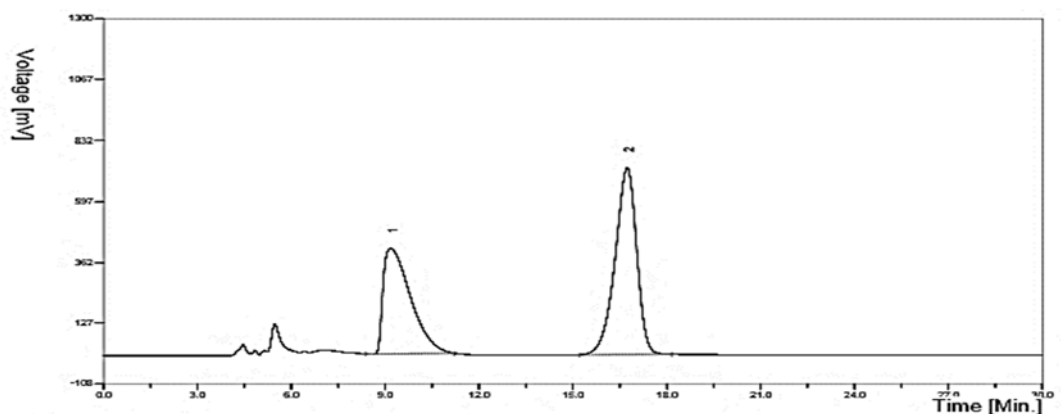
Integration Result			
#	Ret. Time(min)	Area(mv.sec)	Area Percentage(%)
1	9.17	66292.44	99.2548
2	17.29	497.72	0.7452
Total		66790.16	100

ent-7b



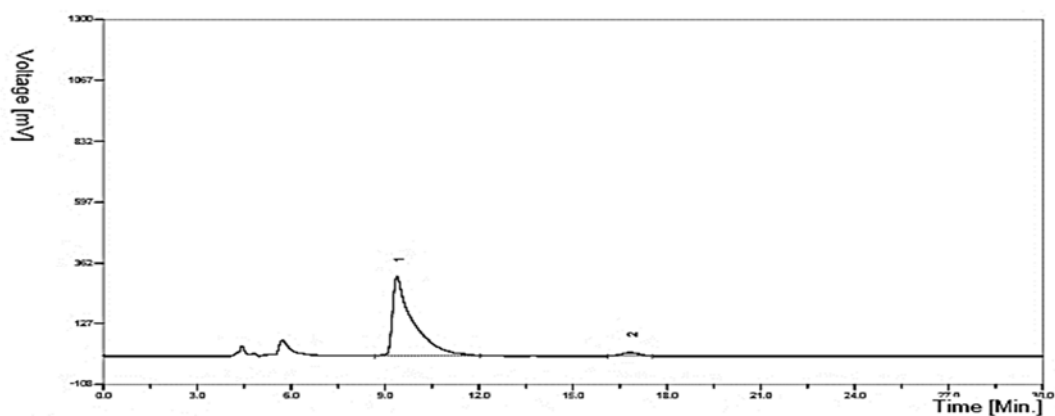
Integration Result			
#	Ret. Time(min)	Area(mv.sec)	Area Percentage(%)
1	9.08	629.06	0.9090
2	17.04	68652.85	99.0920
Total		69281.91	100

7b + ent-7b as rac-7b



Integration Result			
#	Ret. Time(min)	Area(mv.sec)	Area Percentage(%)
1	9.18	24684.83	41.5671
2	16.74	34700.69	58.4329
Total		59385.52	100

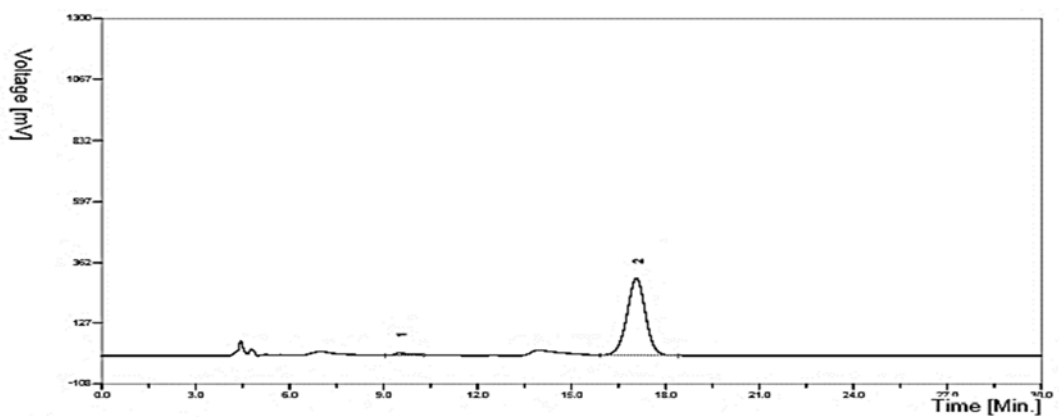
7c



Integration Result

#	Ret. Time(min)	Area(mv.sec)	Area Percentage(%)
1	9.38	13708.73	96.4471
2	16.84	504.99	3.5529
Total		14213.73	100

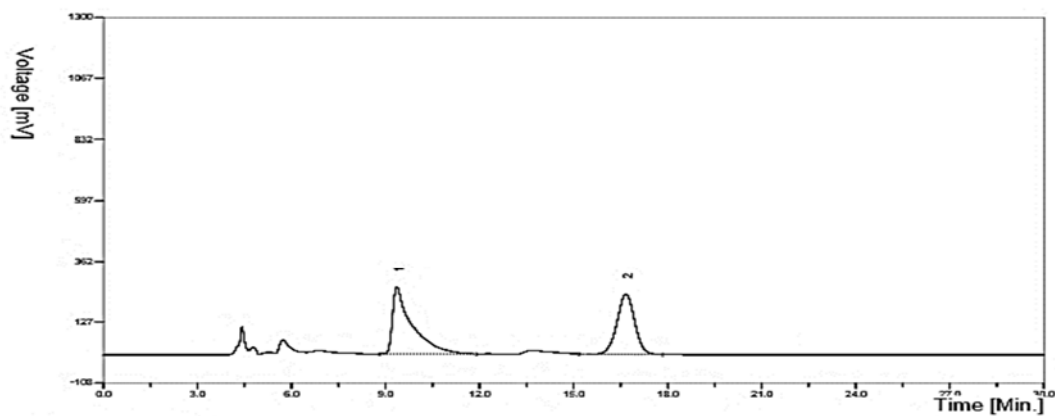
ent-7c



Integration Result

#	Ret. Time(min)	Area(mv.sec)	Area Percentage(%)
1	9.51	229.36	1.8576
2	17.07	12118.10	98.1424
Total		12347.47	100

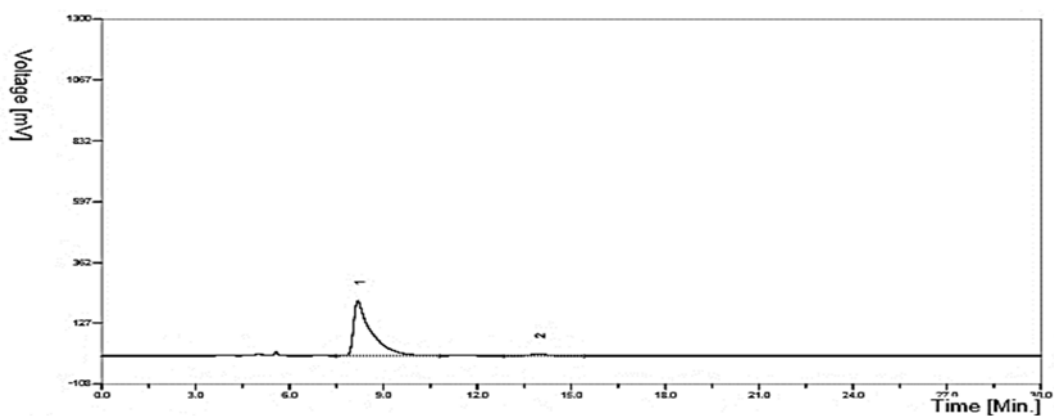
7c + ent-7c as rac-7c



Integration Result

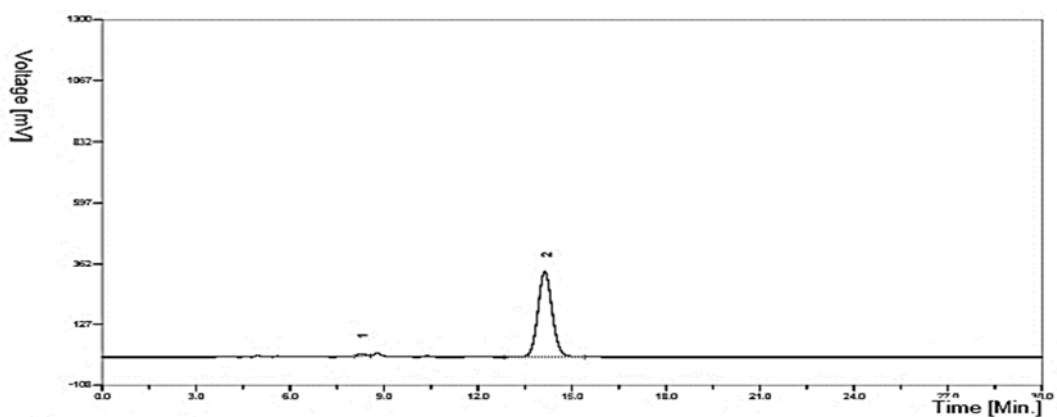
#	Ret. Time(min)	Area(mv.sec)	Area Percentage(%)
1	9.36	11110.53	55.1772
2	16.67	9025.58	44.8228
Total		20136.11	100

7d



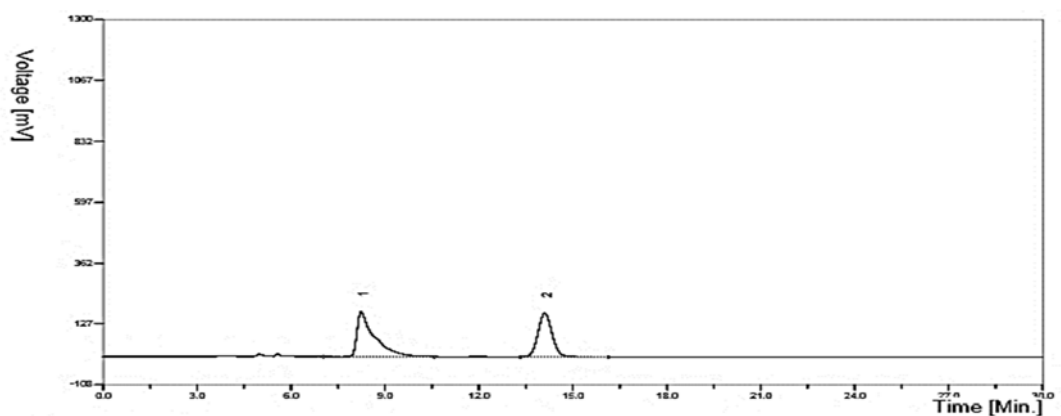
Integration Result			
#	Ret. Time(min)	Area(mv.sec)	Area Percentage(%)
1	8.18	8134.36	97.4310
2	13.95	214.48	2.5690
Total		8348.84	100

ent-7d



Integration Result			
#	Ret. Time(min)	Area(mv.sec)	Area Percentage(%)
1	8.26	125.36	1.1982
2	14.13	10337.57	98.8018
Total		10462.93	100

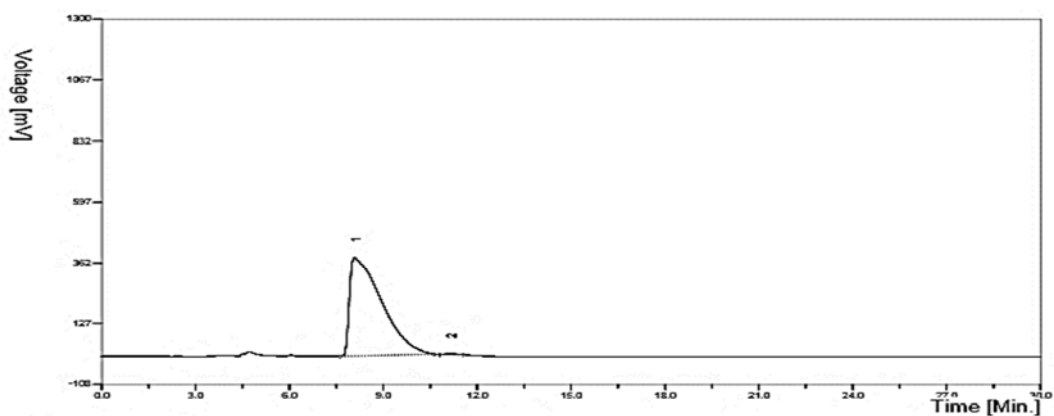
7d + ent-7d as rac-7d



Integration Result			
#	Ret. Time(min)	Area(mv.sec)	Area Percentage(%)
1	8.24	6564.77	55.8234
2	14.10	5195.11	44.1766
Total		11759.89	100

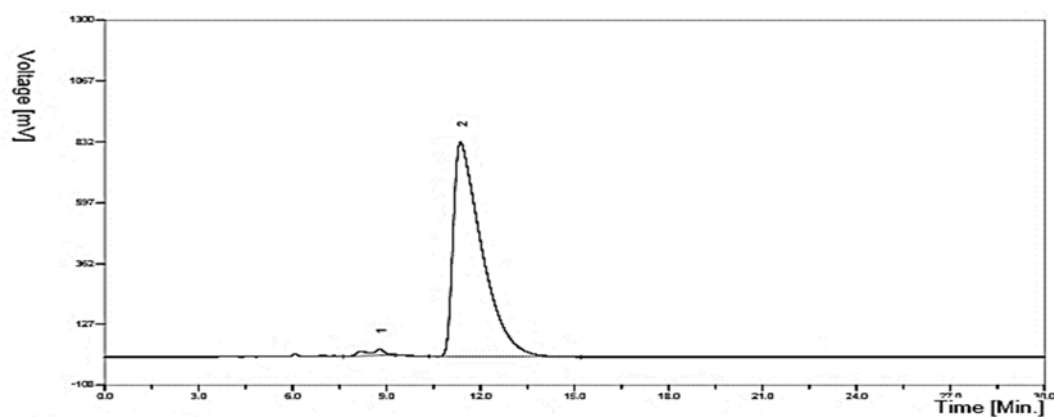


7e



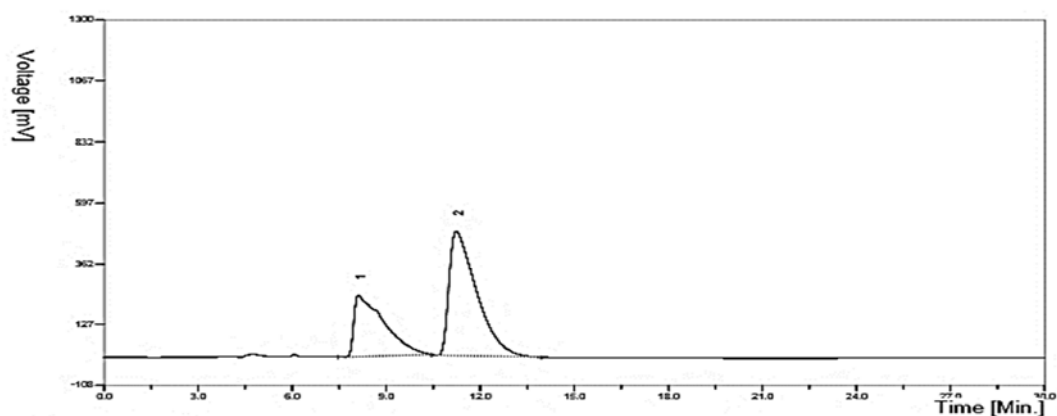
Integration Result			
#	Ret. Time(min)	Area(mv.sec)	Area Percentage(%)
1	8.08	27079.76	99.6597
2	11.12	92.47	0.3403
Total		27172.23	100

ent-7e



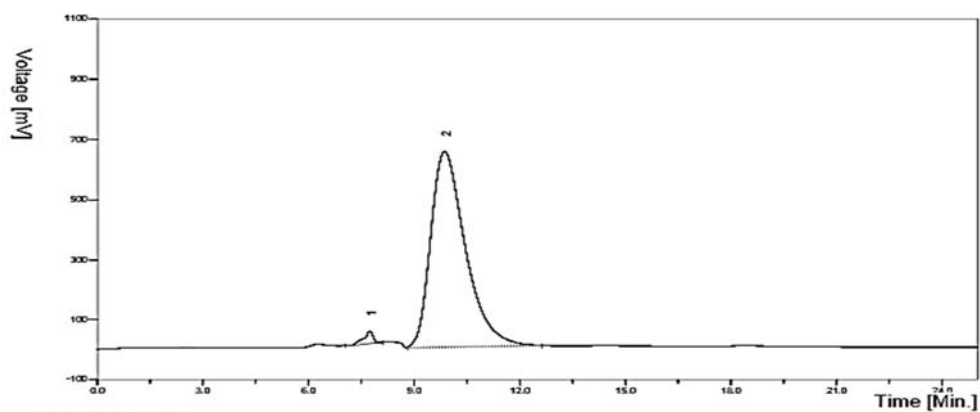
Integration Result			
#	Ret. Time(min)	Area(mv.sec)	Area Percentage(%)
1	8.77	904.47	1.7097
2	11.36	51999.11	98.2903
Total		52903.58	100

7e + ent-7e as rac-7d



Integration Result			
#	Ret. Time(min)	Area(mv.sec)	Area Percentage(%)
1	8.11	15498.42	34.7082
2	11.24	29155.11	65.2918
Total		44653.53	100

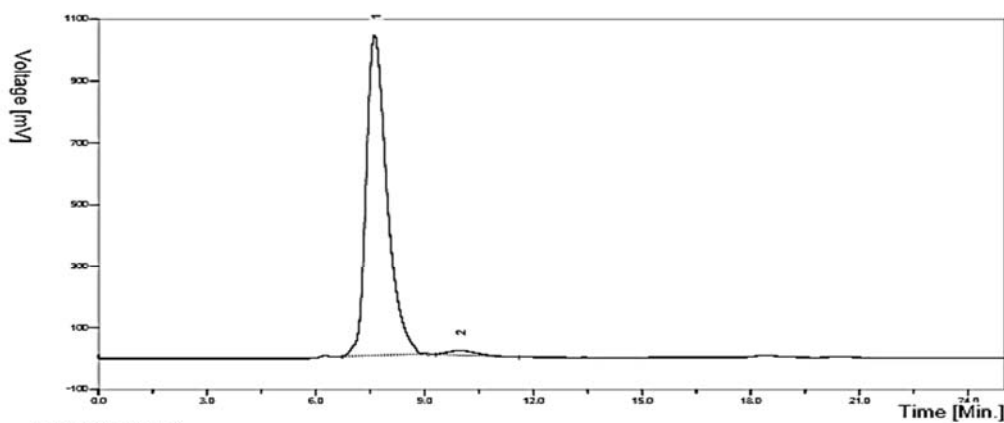
9



Integration Result

#	Ret. Time(min)	Area(mv.sec)	Area Percentage(%)
1	7.74	694.35	1.5290
2	9.86	44718.91	98.4710
Total		45413.27	100

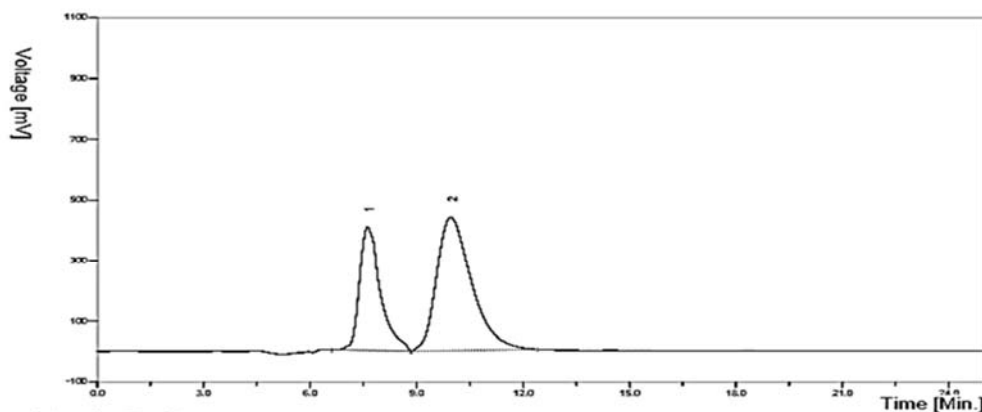
ent-9



Integration Result

#	Ret. Time(min)	Area(mv.sec)	Area Percentage(%)
1	7.62	41705.21	98.1779
2	9.96	773.99	1.8221
Total		42479.21	100

9+ ent-9 as rac-9a



Integration Result

#	Ret. Time(min)	Area(mv.sec)	Area Percentage(%)
1	7.62	16739.03	35.6317
2	9.96	30238.94	64.3683
Total		46977.97	100