

## Electronic Supplementary Information

# Facile Construction of Noncovalent Graft Copolymers with Triple Stimuli-Responsiveness for Triggered Drug Delivery

*Lei Xu<sup>1</sup>, Hairong Wang<sup>2</sup>, Hongrui Tian<sup>1</sup>, Mingzu Zhang<sup>1</sup>, Jinlin He<sup>\*1</sup>, Peihong Ni<sup>1</sup>*

<sup>1</sup>College of Chemistry, Chemical Engineering and Materials Science, State and Local Joint Engineering Laboratory for Novel Functional Polymeric Materials, Jiangsu Key Laboratory of Advanced Functional Polymer Design and Application, Suzhou Key Laboratory of Macromolecular Design and Precision Synthesis, Soochow University, Suzhou, Jiangsu, 215123, China

<sup>2</sup>Children's Hospital of Soochow University, Pediatric Research Institute of Soochow University, Suzhou, Jiangsu, 215123, China

\*E-mail: [jlhe@suda.edu.cn](mailto:jlhe@suda.edu.cn) (J. He)

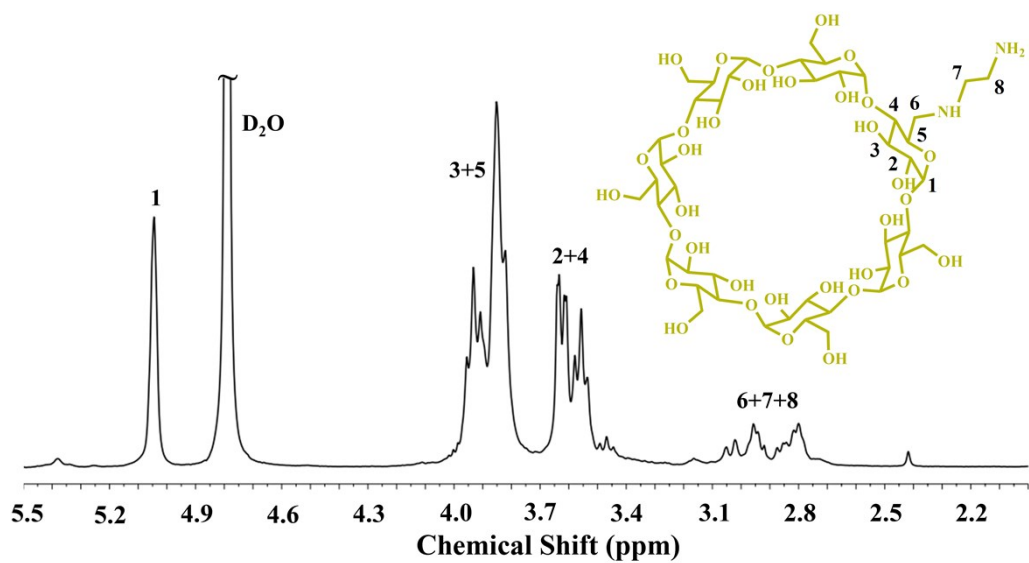


Fig. S1.  $^1\text{H}$  NMR spectrum of EDA- $\beta$ -CD.

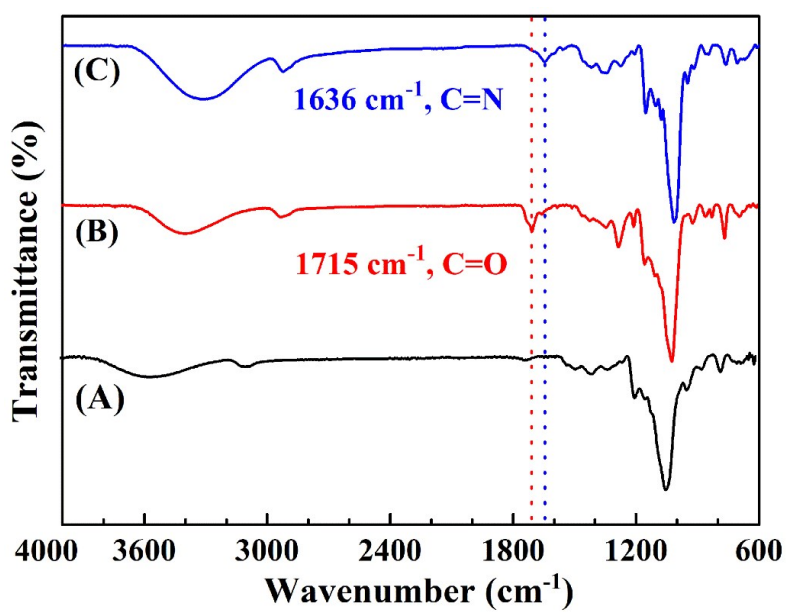
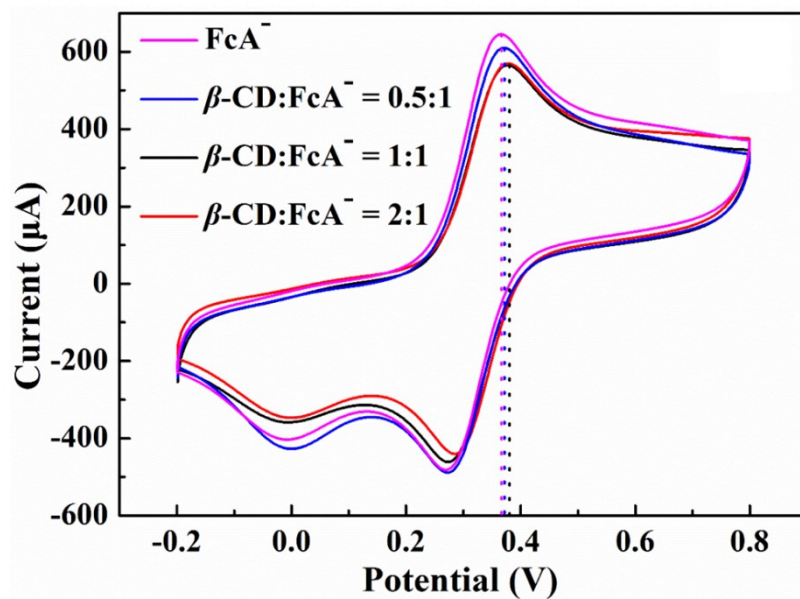
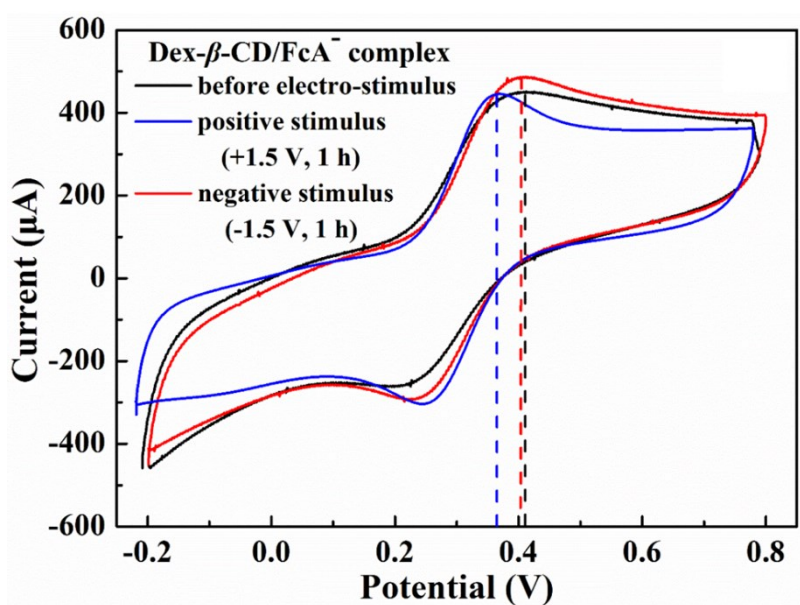


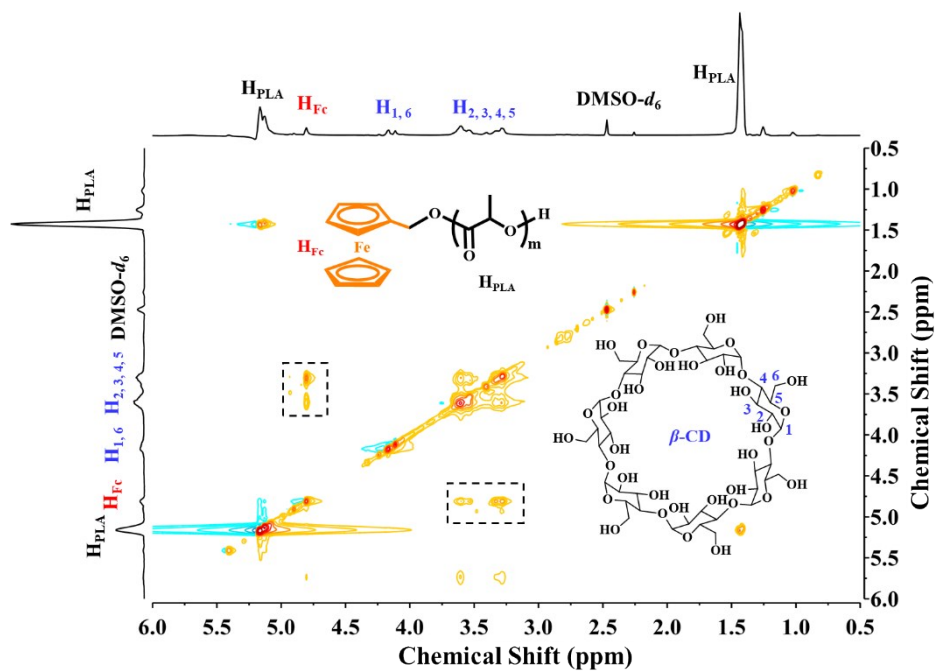
Fig. S2. FT-IR spectra of (A) Dex, (B) Dex-CHO and (C) Dex- $\beta$ -CD.



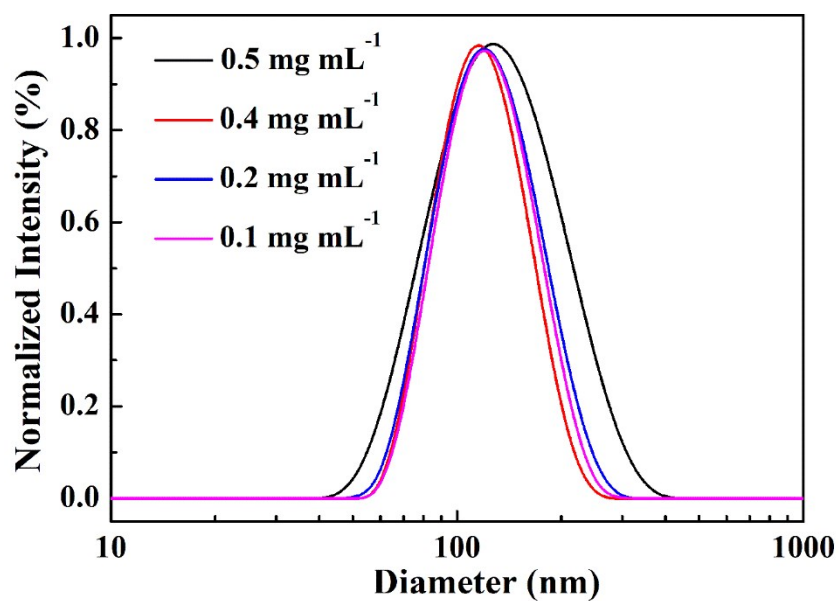
**Fig. S3.** CV curves of  $\text{FcA}^-$  and  $\beta\text{-CD}/\text{FcA}^-$  with different mole ratios. The analysis ( $25\text{ }^\circ\text{C}$ ,  $100\text{ mV s}^{-1}$ ) was performed with an  $\text{FcA}^-$  concentration of  $2\text{ mM}$  in  $\text{Na}_2\text{HPO}_4$  solution ( $200\text{ mM}$ , pH 9.2).



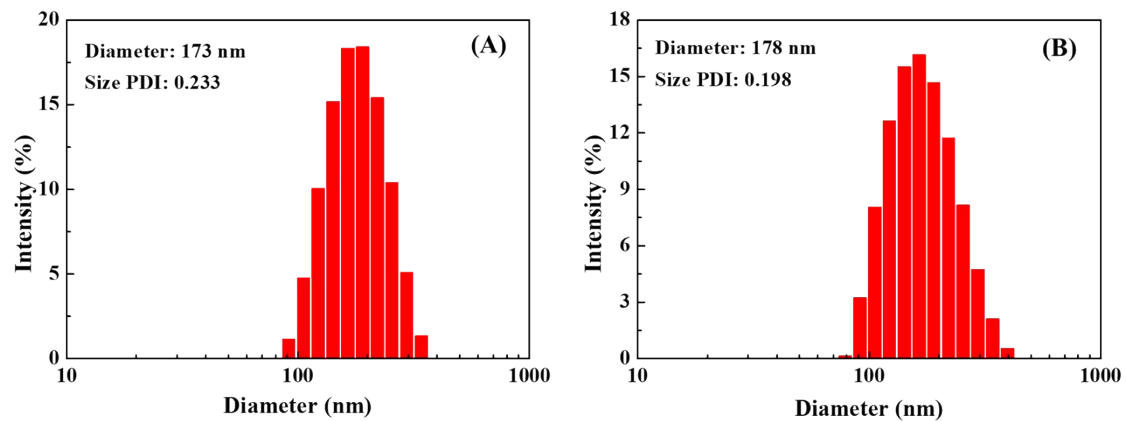
**Fig. S4.** CV curves of  $\text{Dex-}\beta\text{-CD}/\text{FcA}^-$  inclusion complex ( $\beta\text{-CD}:\text{Fc} = 1:1$ ) at different conditions. The analysis ( $25\text{ }^\circ\text{C}$ ,  $100\text{ mV s}^{-1}$ ) was performed with an  $\text{FcA}^-$  concentration of  $2\text{ mM}$  in  $\text{Na}_2\text{HPO}_4$  solution ( $200\text{ mM}$ , pH 9.2).



**Fig. S5.** 2D NOESY <sup>1</sup>H NMR spectra of β-CD/Fc-PLA (β-CD:Fc = 1:1) in DMSO-*d*<sub>6</sub> at 25 °C (63 mg mL<sup>-1</sup>).



**Fig. S6.** The particle size distribution curves of Dex-β-CD/Fc-PLA (β-CD:Fc = 2.5:1) NPs with different concentrations.



**Fig. S7.** Particle size distribution histograms of DOX/Dex- $\beta$ -CD/Fc-PLA ( $\beta$ -CD:Fc = 2.5:1) NPs in phosphate buffer (pH 7.4) at the incubation time of (A) 0 h and (B) 48 h.