

A tri-component semiconducting polymer with ultrahigh photothermal conversion efficiency as a biodegradable photosensitizer for phototheranostics

Yulan Gu^a, Guoqiang Zhou^{*b}, Yujie Zhong^c, Litao Tan^c, Zuhui Zheng^c, Zihan Qiu^c, Bo Wei^c, Lei Shen^c, Jie Yang^{*c}, Dengfeng Zou^{*d}

a. Department of Oncology, Changshu No.2 People's Hospital, Changshu, 215500, P.R. China.

b. Department of General Surgery, Changshu No.2 People's Hospital, Changshu, 215500, P.R. China. Email: chowgq0568@163.com.

c. Department of Materials Engineering, Changshu Institute of Technology, Changshu, 215500, Jiangsu, P.R. China. Email: jieyang@cslg.edu.cn.

d. School of Pharmacy, Guilin Medical University, Guilin, 541004, Guangxi, P.R. China. Email: zdf1226@126.com.

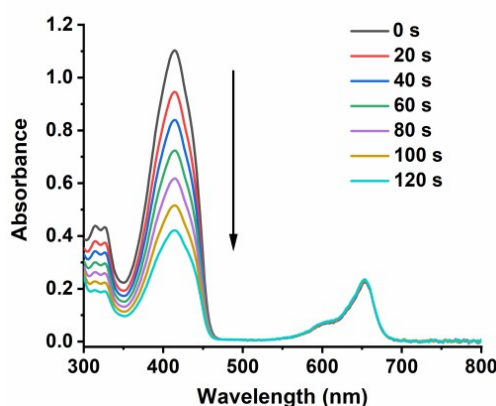


Figure S1 DPBF degradation in the presence of NDT in DCM with laser irradiation.

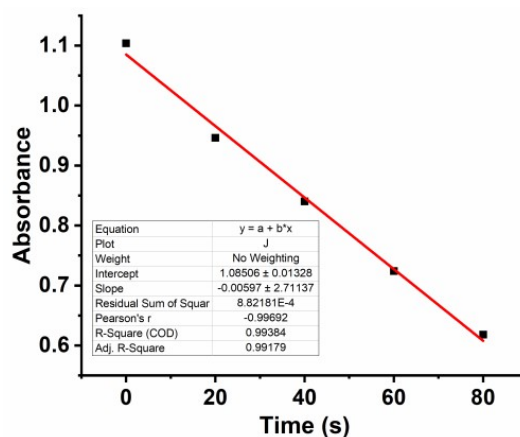


Figure S2 Linear fitting of the absorbance of DPBF.

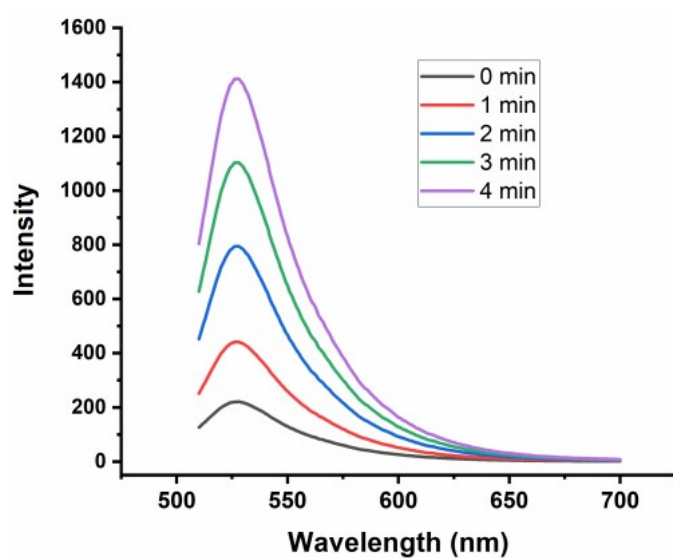


Figure S3 SOSG intensity in the presence of NDT NPs with laser irradiation (0.5 W/cm²).

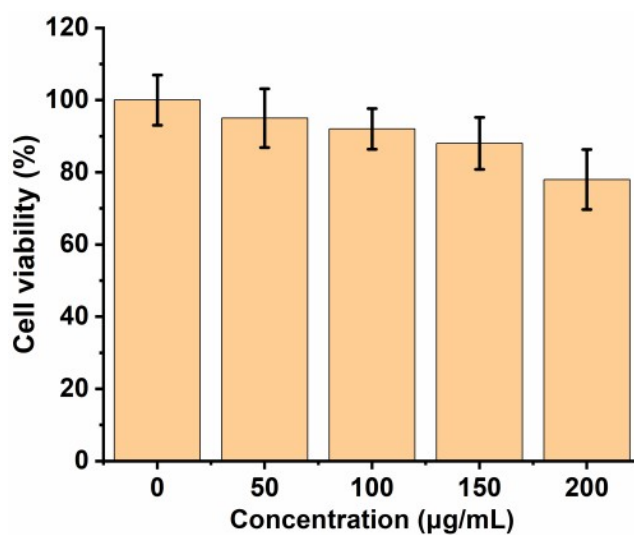


Figure S4 Cell viability of NDT NPs under high concentrations without irradiation.

Table S1. Effects of NDT NPs on hematological, liver and renal function

Parameters	Control	NDT only	NDT +laser (0.2 W/cm ²)	NDT +laser (0.5 W/cm ²)
Hemoglobin (g/dL)	14.77±0.86	15.20±0.49	15.67±1.77	14.80±1.79
Hematocrit (%)	37.53±3.48	38.73±0.56	39.55±5.28	38.63±1.55
Mean corpuscular volume (fL)	63.73±2.38	62.27±4.38	66.34±3.67	65.12±6.78
Mean corpuscular hemoglobin (pg)	24.50±0.89	24.47±2.31	25.44±2.53	25.49±1.36
Lymphocytes (%)	78.30±6.73	77.17±5.82	79.33±7.74	76.17±5.22
Monocytes (%)	3.73±1.52	3.60±1.44	3.88±0.52	3.69±0.64
Eosinophils (%)	0.83±0.22	1.13±0.04	0.93±0.25	1.04±0.24
Basophils (%)	0.83±0.14	0.80±0.19	0.93±0.08	0.86±0.12
Platelet	1366.00±177 .21	1272.57±162 .06	1458.00±137 .24	1462.55±188 .03
Creatinine(μmol/L)	74.47±5.84	69.03±4.37	70.47±3.43	72.15±5.36

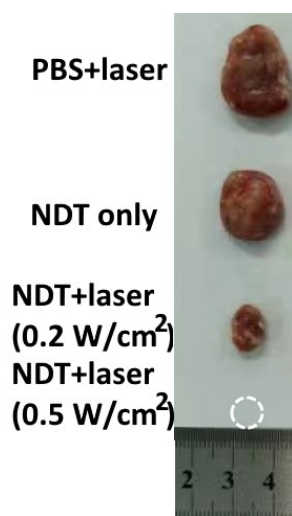


Figure S5 Representative tumor pictures in the PBS+laser, NDT only, NDT+laser (0.2 or 0.5 W/cm²)