

## **A ratiometric fluorescent probe for the detection of $\beta$ -galactosidase and its application**

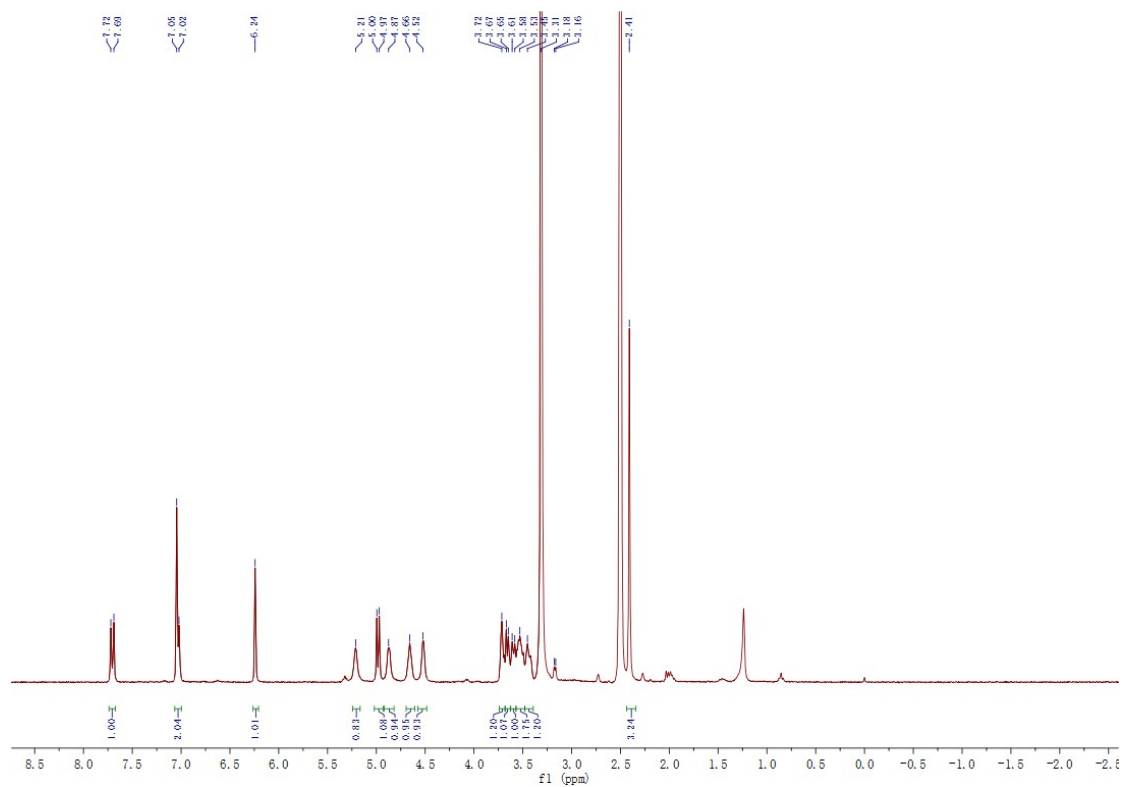
**Yanan Li, Bing Deng, Haitao Chen\*, Shaoxiang Yang\*, and Baoguo Sun**

*Beijing Key laboratory of Flavor Chemistry, Beijing Technology and Business University, Beijing 100048, China*

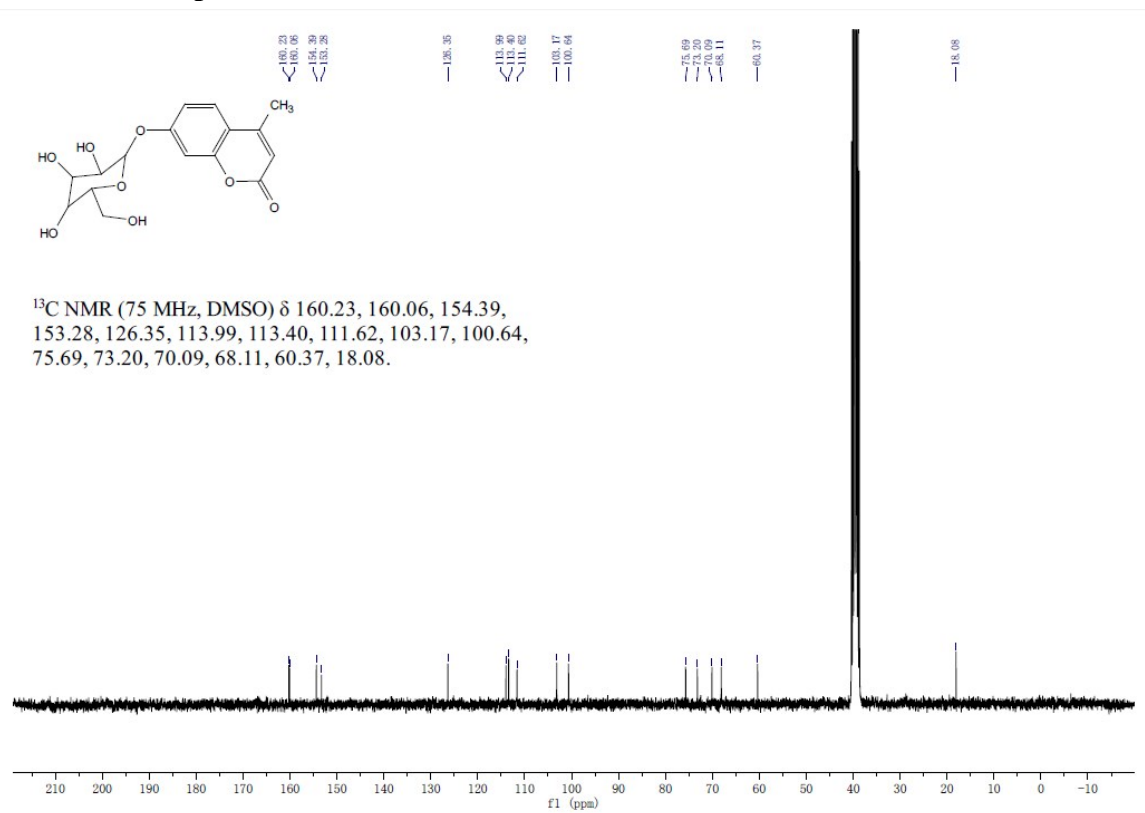
\* E-mail: [chenht@th.btbu.edu.cn](mailto:chenht@th.btbu.edu.cn); [yangshaoxiang@th.btbu.edu.cn](mailto:yangshaoxiang@th.btbu.edu.cn)

<b>TABLE OF CONTENTS</b>	<b>PAGE</b>
<b>S1. <math>^1\text{H}</math> NMR spectra of Probe 1</b>	<b>2</b>
<b>S2. <math>^{13}\text{C}</math> NMR spectra of Probe 1</b>	<b>2</b>
<b>S3. HRMS spectra of Probe 1</b>	<b>3</b>
<b>S4. HPLC spectra of Probe 1+<math>\beta</math>-gal</b>	<b>4</b>
<b>S5. MS spectra of Probe 1+<math>\beta</math>-gal</b>	<b>4</b>
<b>S6. Photograph of kiwi (ripe) and kiwi (unripe)</b>	<b>5</b>

**S1.  $^1\text{H}$  NMR spectra of Probe 1**



## S2. <sup>13</sup>C NMR spectra of Probe 1

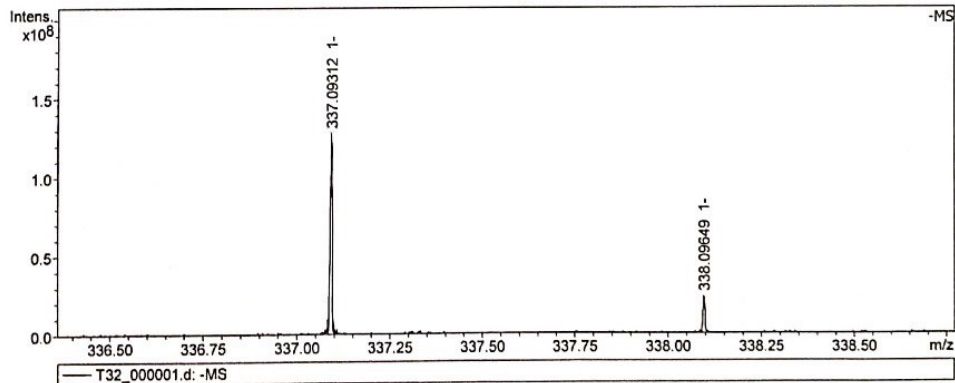
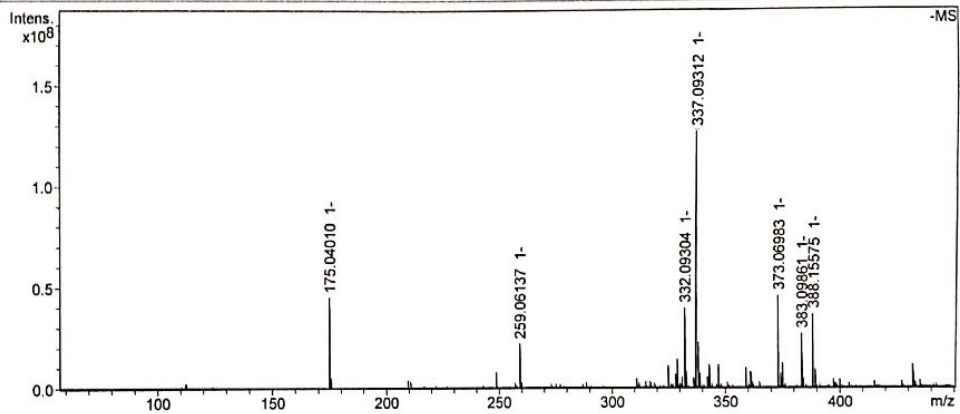


## S3. HRMS spectra of Probe 1

# ESI(N),T32,20190702

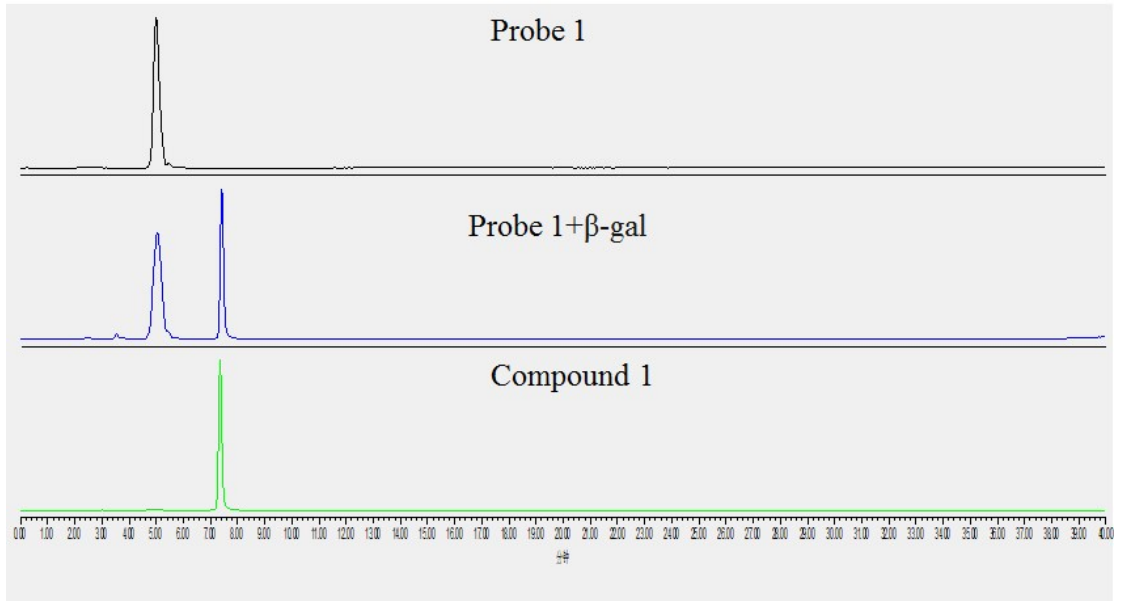
**Analysis Info** Acquisition Date 7/2/2019 11:10:28 AM  
 Analysis Name D:\Data\ESI\2019\2019-07\0702\T32\_000001.d  
 Sample Name T32 Instrument solariX

**Acquisition Parameter**  
 Polarity Negative Acquired Scans 20  
 Broadband Low Mass 57.7 m/z Broadband High Mass 450.0 m/z

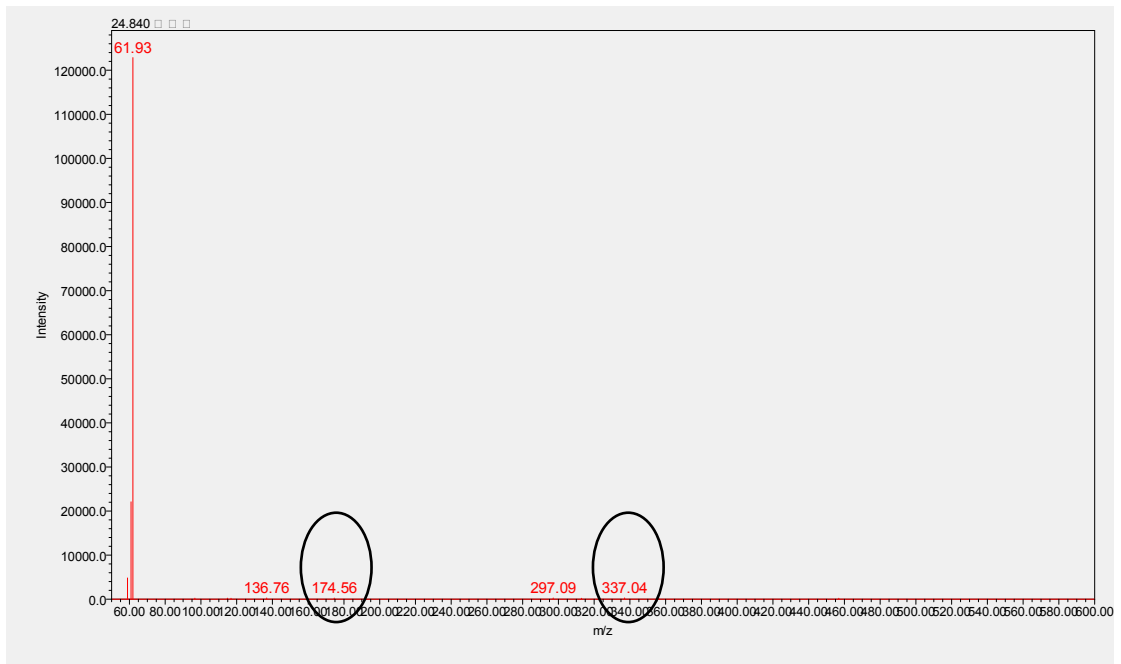


Meas. m/z	#	Ion Formula	Score	m/z	err [ppm]	Mean err [ppm]	mSigma	rdb	e <sup>-</sup> Conf	N-Rule
337.093115	1	C <sub>16</sub> H <sub>17</sub> O <sub>8</sub>	100.00	337.092891	-0.7	-0.6	9.5	8.5	even	ok

## S4. HPLC spectra of Probe 1+β-gal



### S5. MS spectra of Probe 1+β-gal



### S6. Photograph of kiwi (ripe) and kiwi (unripe)

kiwi (unripe)

kiwi (ripe)

