

Supporting Information for

## **3-Decalinoyltetramic acids from kiwi-associated fungus *Zopfiella* sp. and their antibacterial activity against *Pseudomonas syringae***

Xue-Wen Yi,<sup>ab,1</sup> Juan He,<sup>b,1</sup> Li-Tang Sun,<sup>a</sup> Ji-Kai Liu,<sup>b</sup> Guo-Kai Wang,<sup>\*a</sup> and Tao Feng<sup>\*ab</sup>

<sup>a</sup>*School of Pharmacy, Anhui University of Chinese Medicine, Anhui Key Laboratory of Modern Chinese Materia Medica, Hefei 230012, People's Republic of China*

<sup>b</sup>*School of Pharmaceutical Sciences, South-Central University for Nationalities, Wuhan 430074, People's Republic of China*

<sup>1</sup>These authors contributed equally to this work.

\*Corresponding authors.

*E-mail addresses:* tfeng@mail.scuec.edu.cn (T. Feng); wanggk@ahtcm.edu.cn (G. K. Wang)

### **Contents**

Figure 1S–8S: NMR, MS, and CD spectra of zofielliamide A (1).....	p2S-5S
Figure 9S–16S: NMR, MS, and CD spectra of zofielliamide B (2).....	p6S-9S
Figure 17S–24S: NMR, MS, and CD spectra of zofielliamide C (3).....	p10S-13S
Figure 25S–32S: NMR, MS, and CD spectra of zofielliamide D (4).....	p14S-17S

Figure 1S.  $^1\text{H}$  NMR (600 MHz, methanol- $d_4$ ) spectrum of zofielliamide A (**1**)

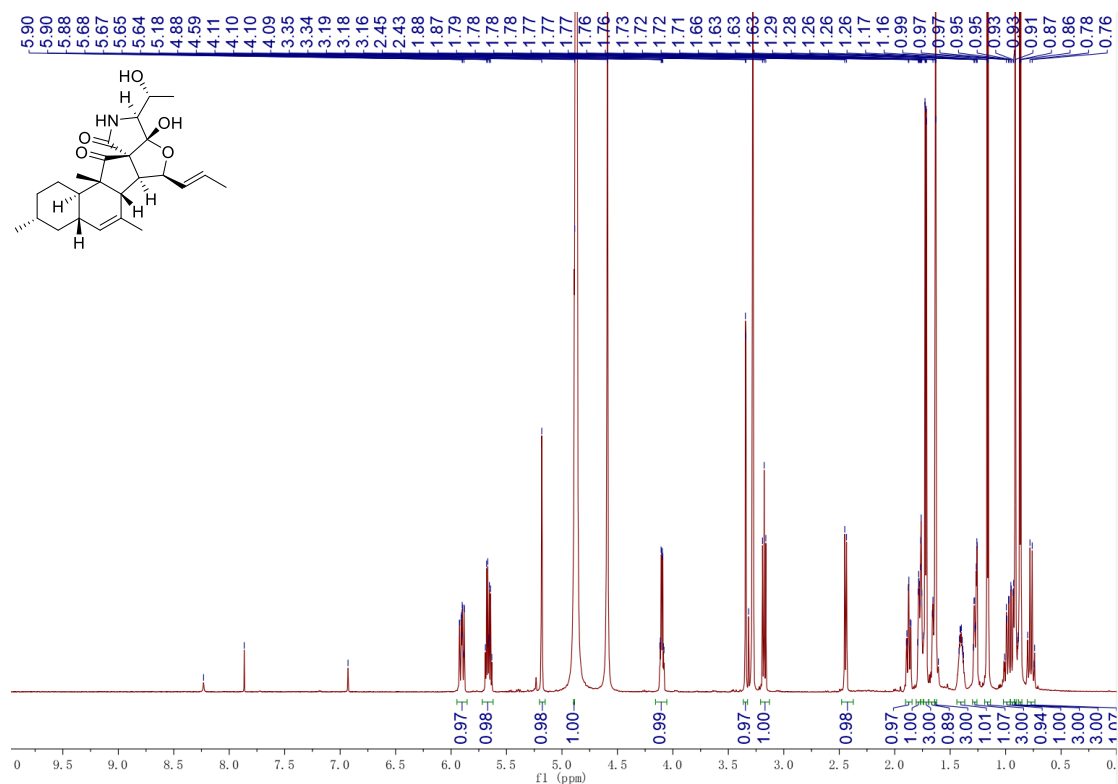


Figure 2S.  $^{13}\text{C}$  NMR (150 MHz, methanol- $d_4$ ) spectrum of zofielliamide A (**1**)

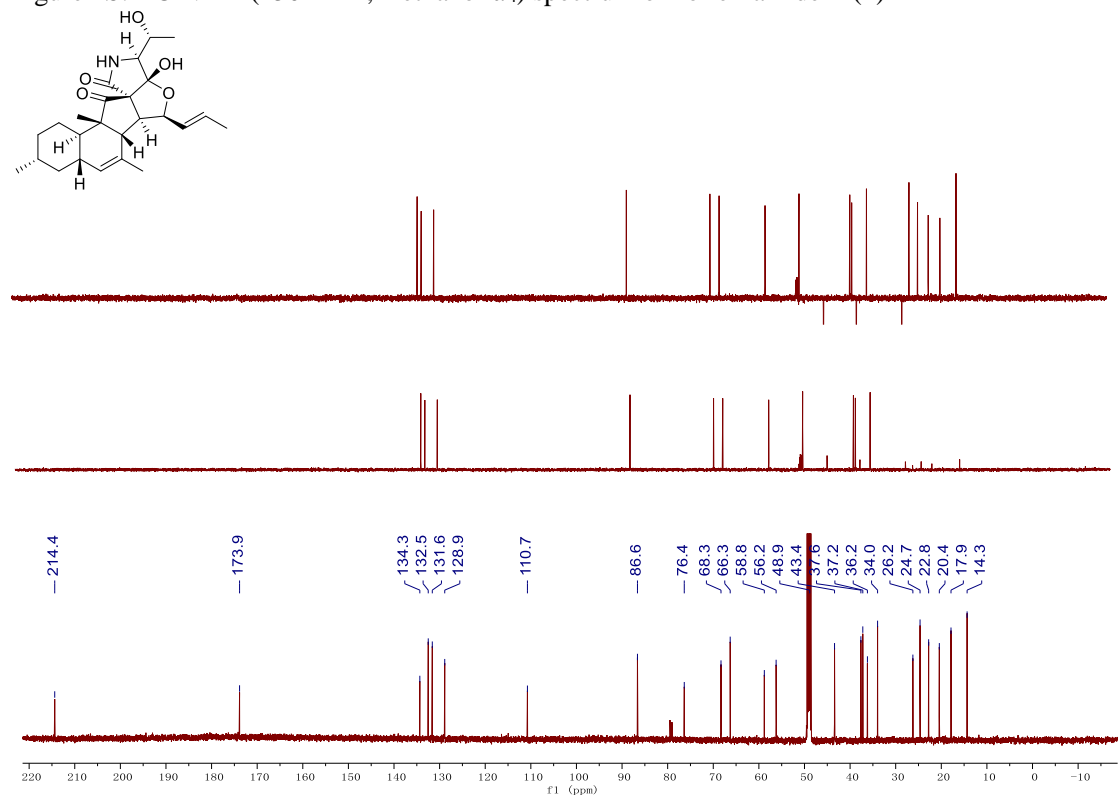


Figure 3S.  $^1\text{H}$ - $^1\text{H}$  COSY spectrum of zofielliamide A (**1**)

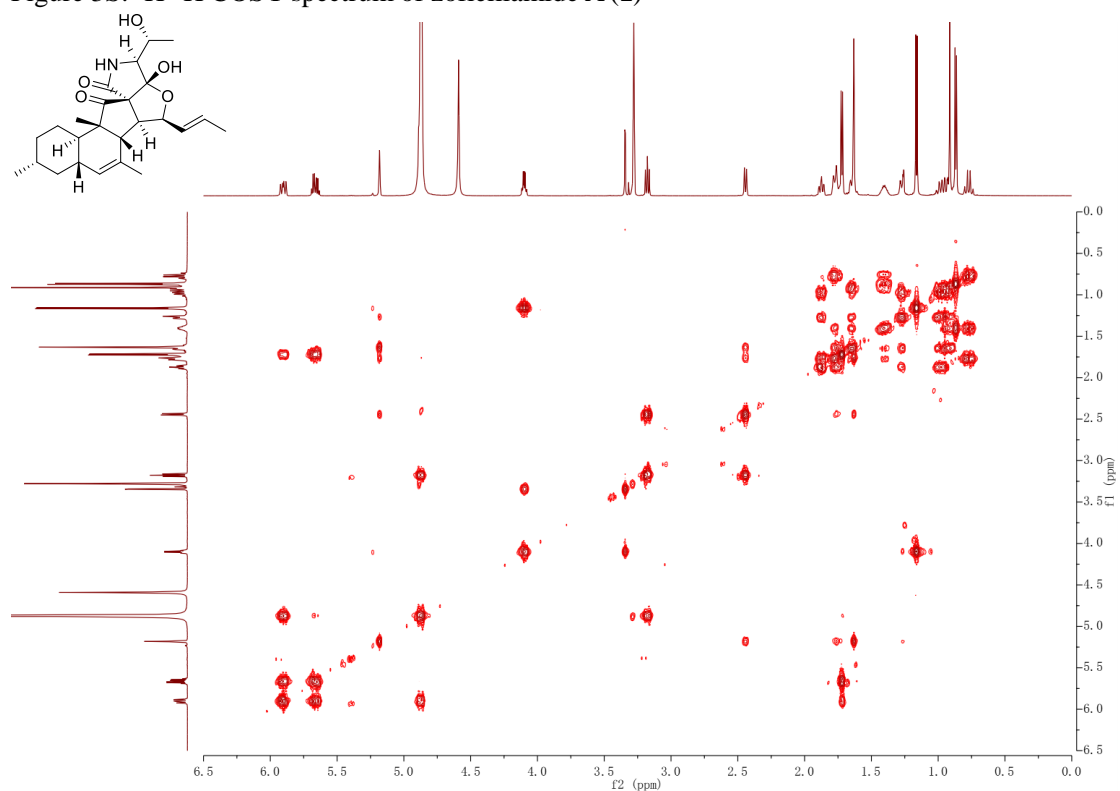


Figure 4S. HMQC spectrum of zofielliamide A (**1**)

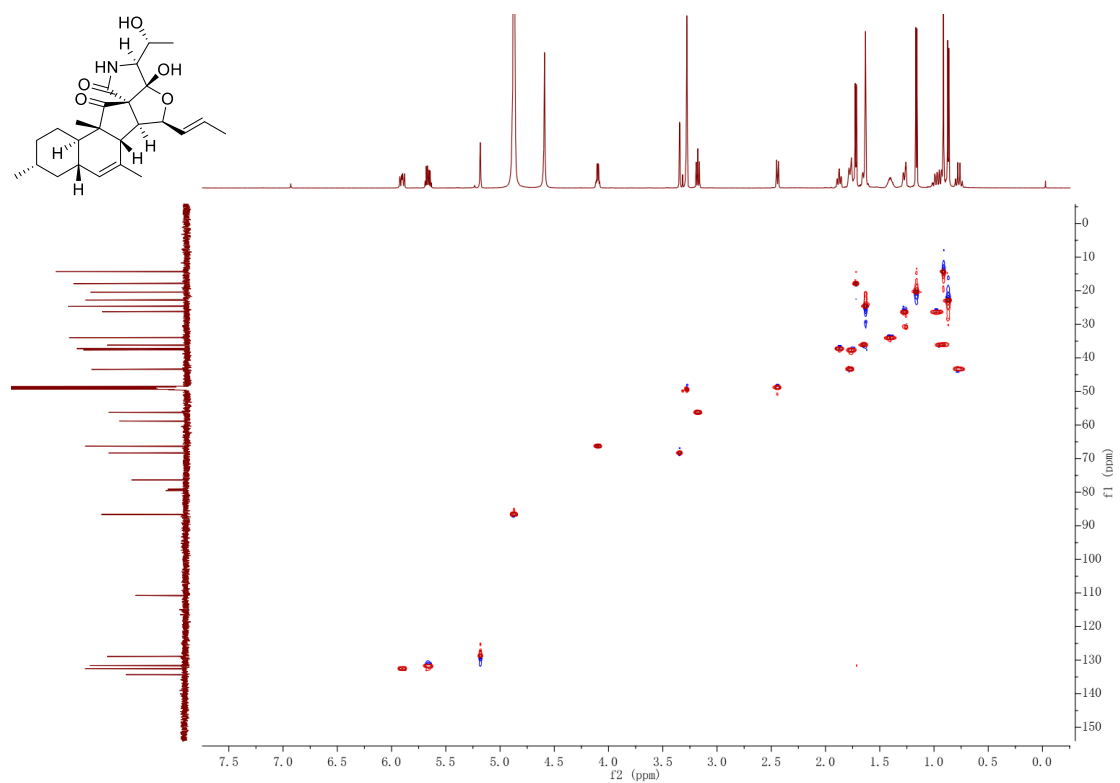


Figure 5S. HMBC spectrum of zofielliamide A (**1**)

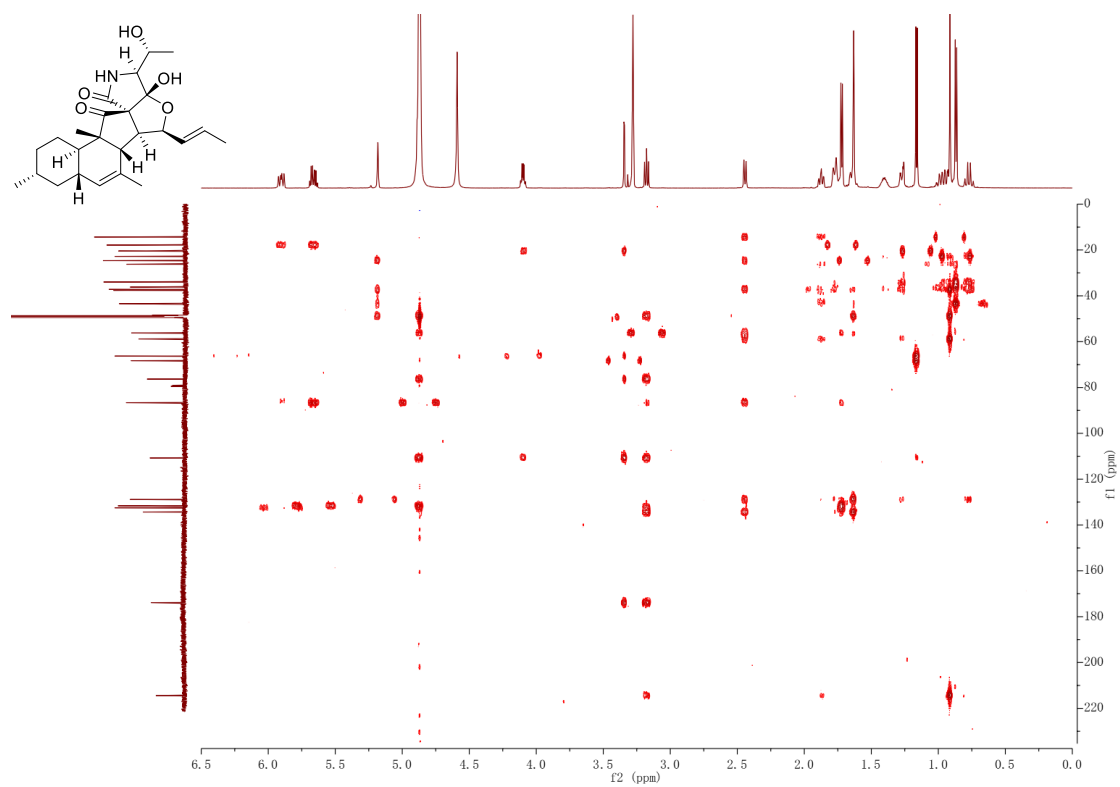


Figure 6S. ROESY spectrum of zofielliamide A (**1**)

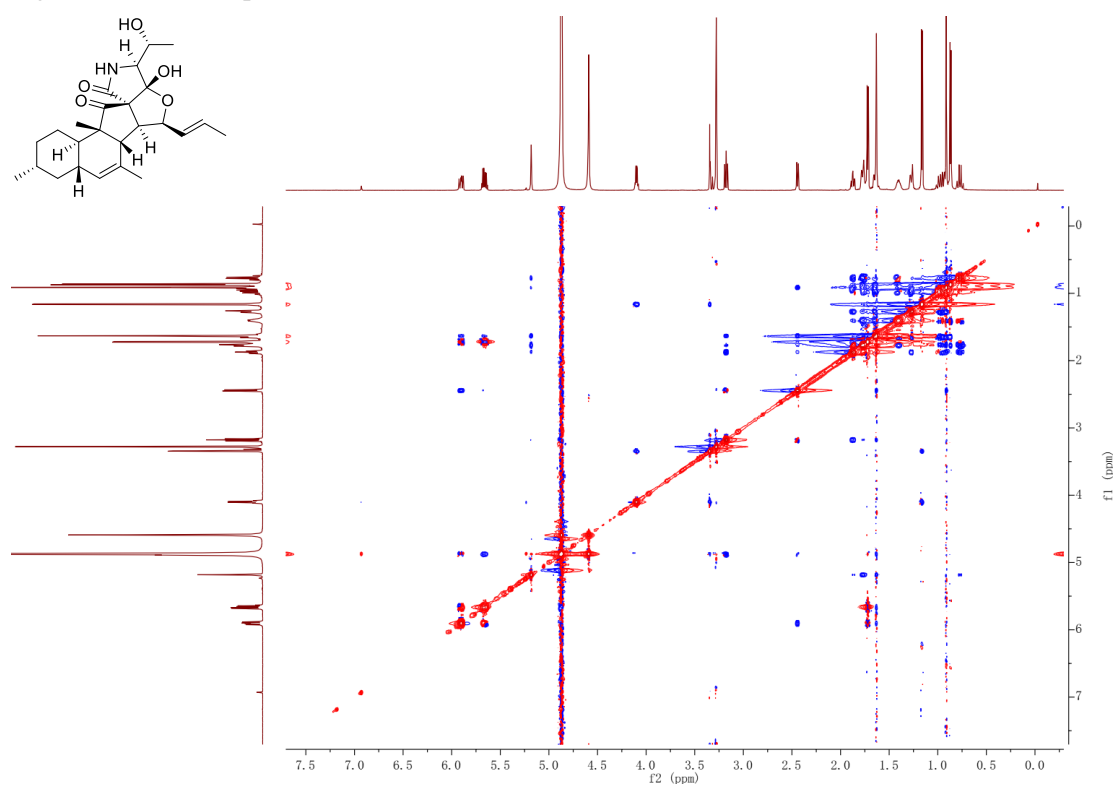


Figure 7S. HRESIMS of zofielliamide A (1)

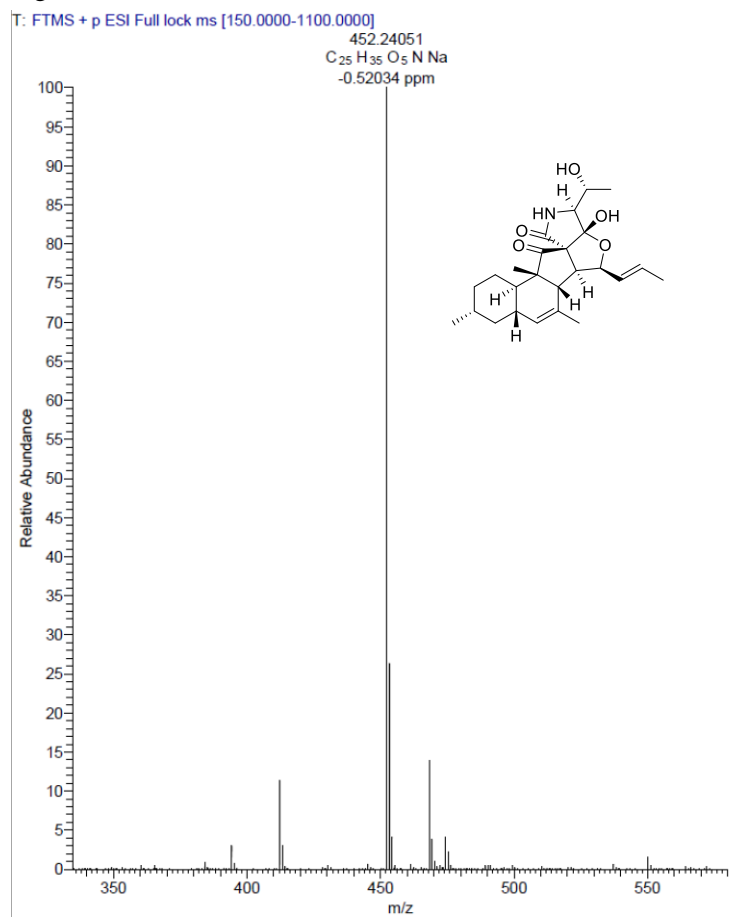


Figure 8S. CD spectrum of zofielliamide A (1)

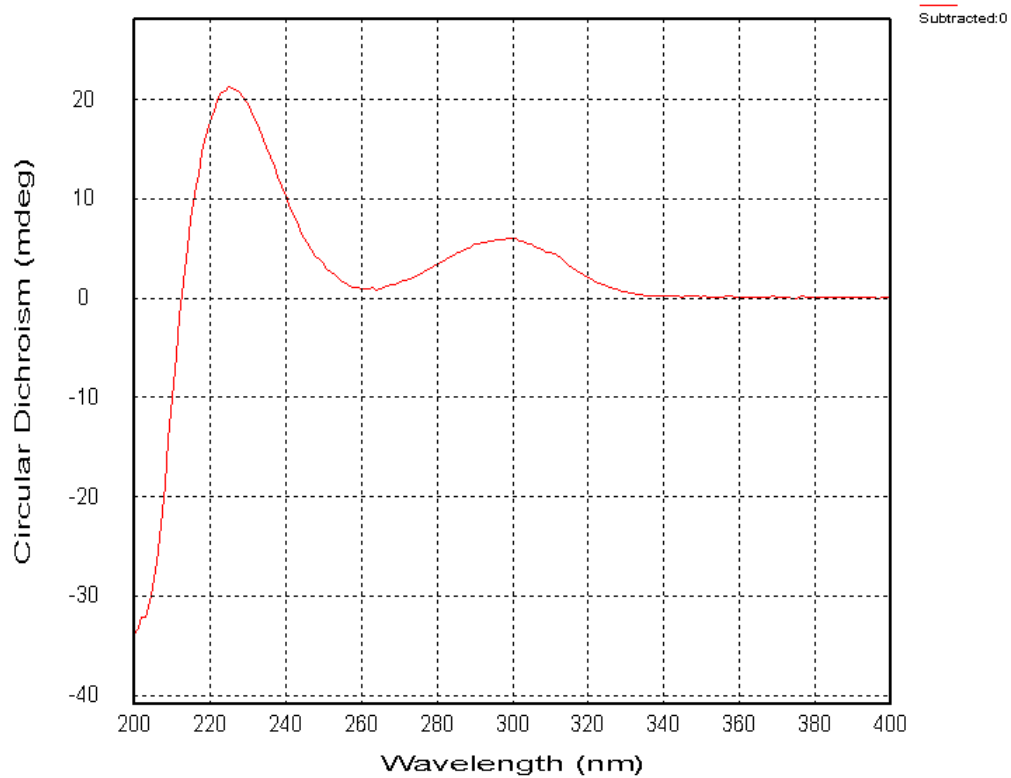


Figure 9S. <sup>1</sup>H NMR (600 MHz, methanol-*d*<sub>4</sub>) spectrum of zofielliamide B (2)

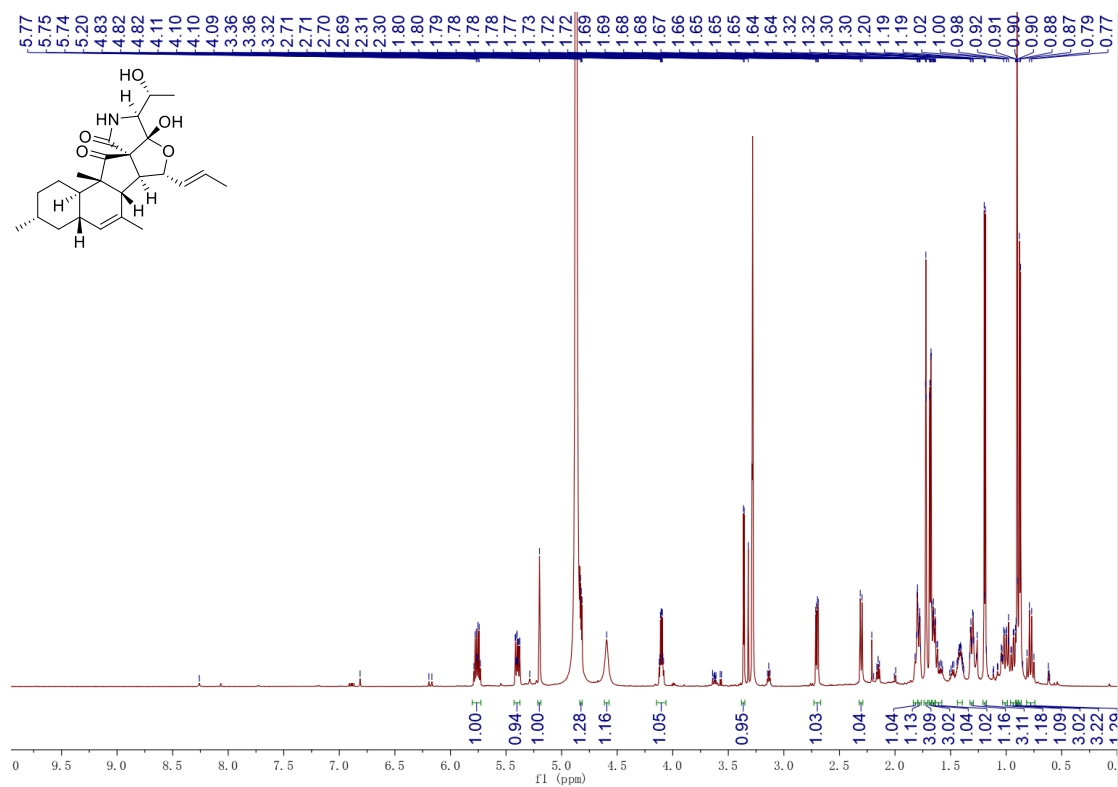


Figure 10S. <sup>13</sup>C NMR (150 MHz, methanol-*d*<sub>4</sub>) spectrum of zofielliamide B (2)

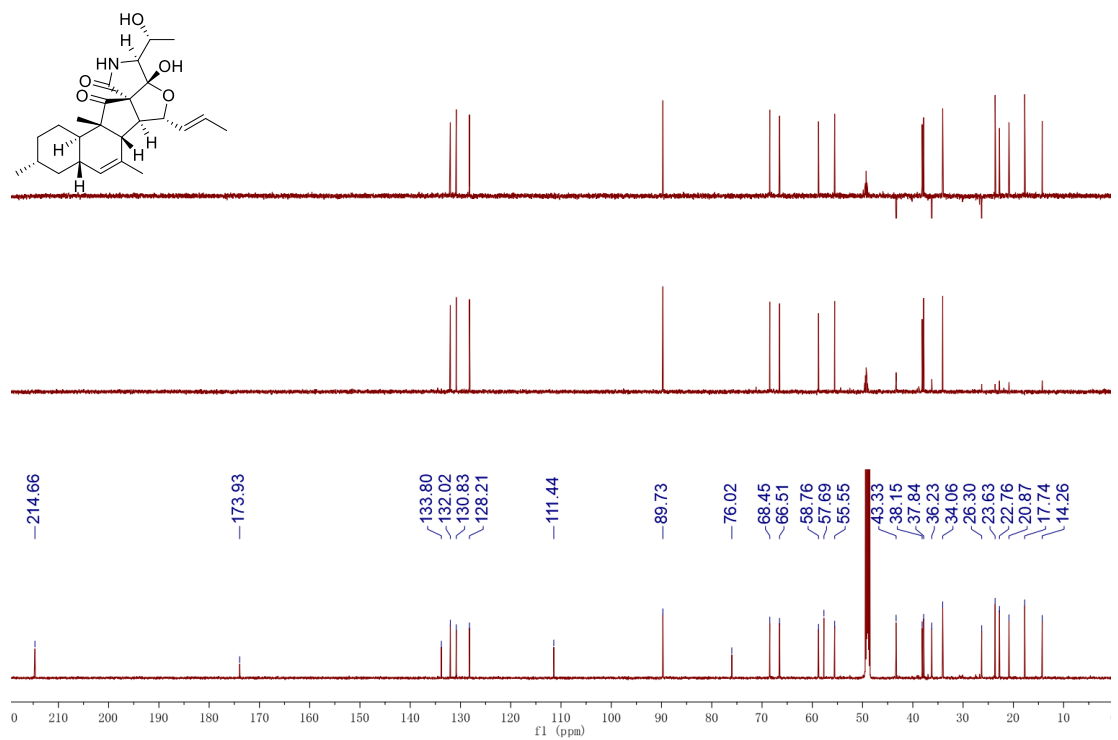


Figure 11S.  $^1\text{H}$ - $^1\text{H}$  COSY spectrum of zofielliamide B (2)

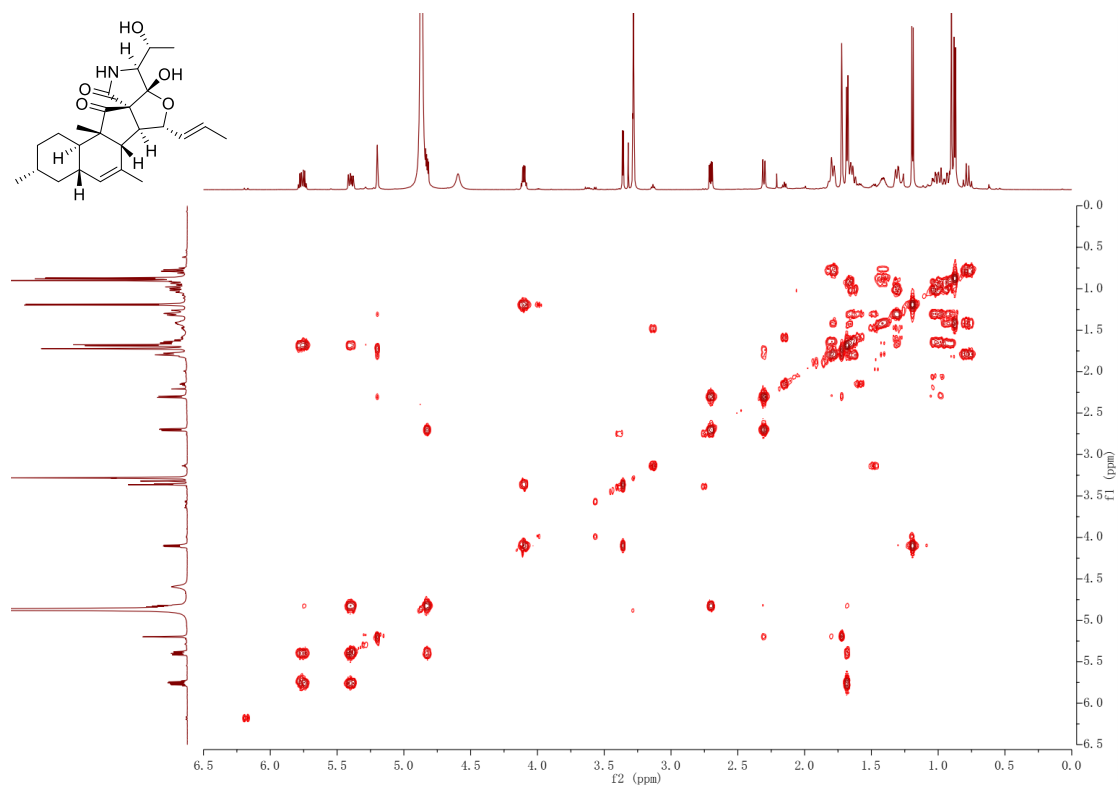


Figure 12S. HQSC spectrum of zofielliamide B (2)

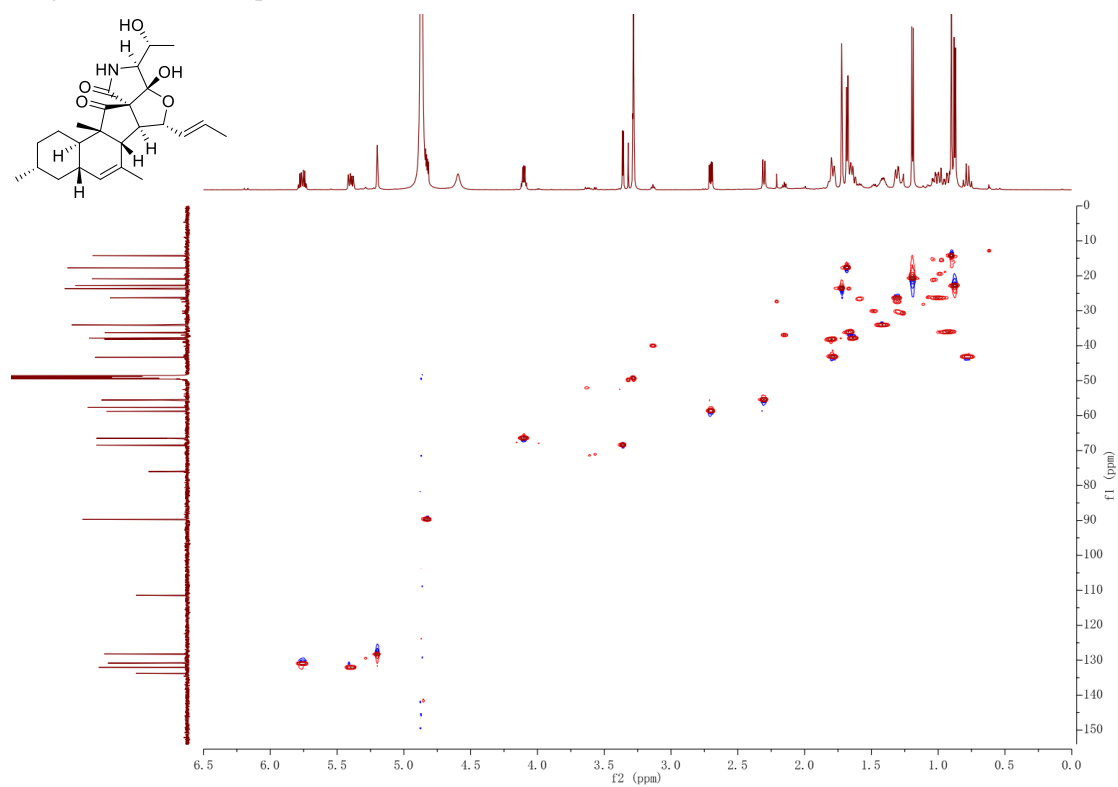


Figure 13S. HMBC spectrum of zofielliamide B (2)

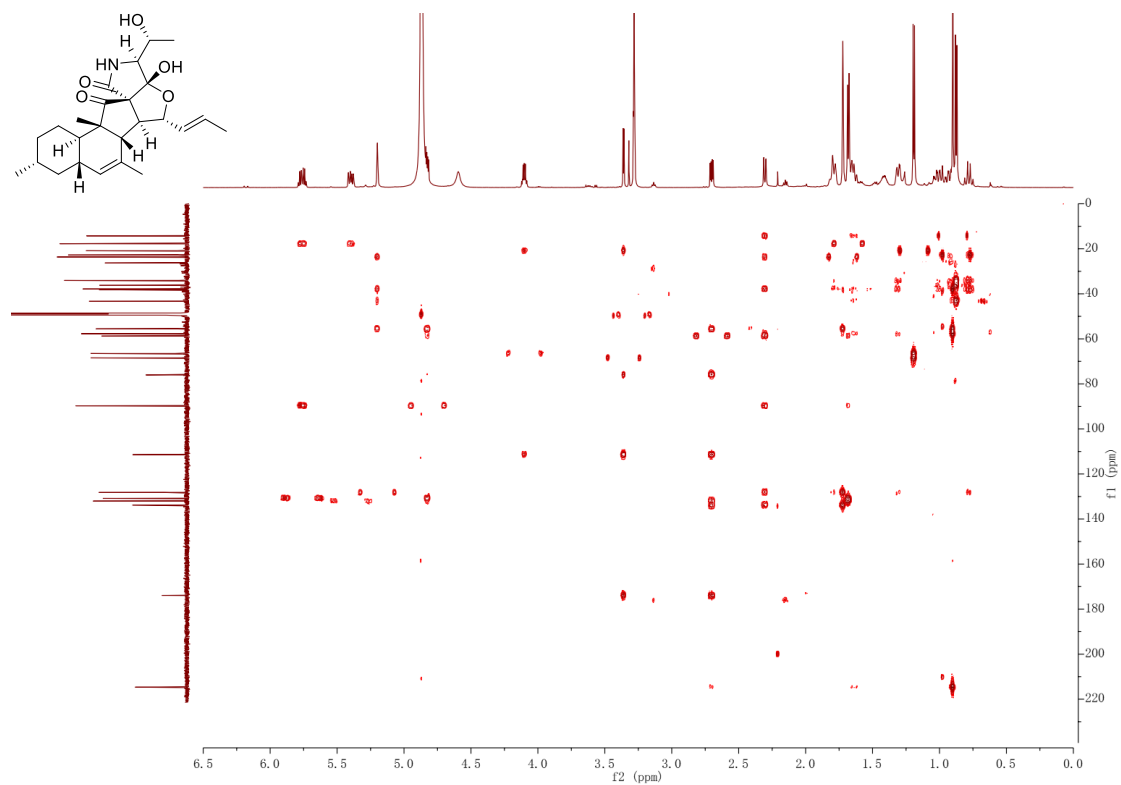


Figure 14S. ROESY spectrum of zofielliamide B (2)

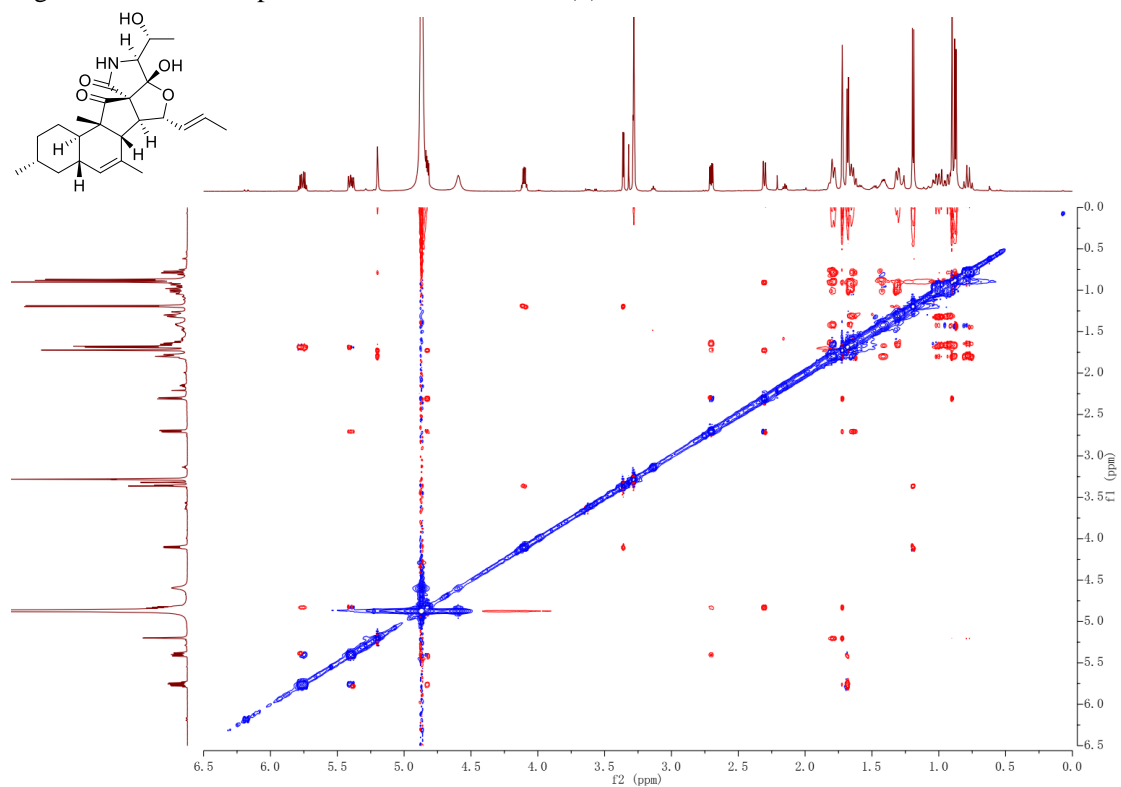




Figure 15S. HRESIMS of zofielliamide B (2)

T: FTMS + p ESI Full lock ms [150.0000-1100.0000]

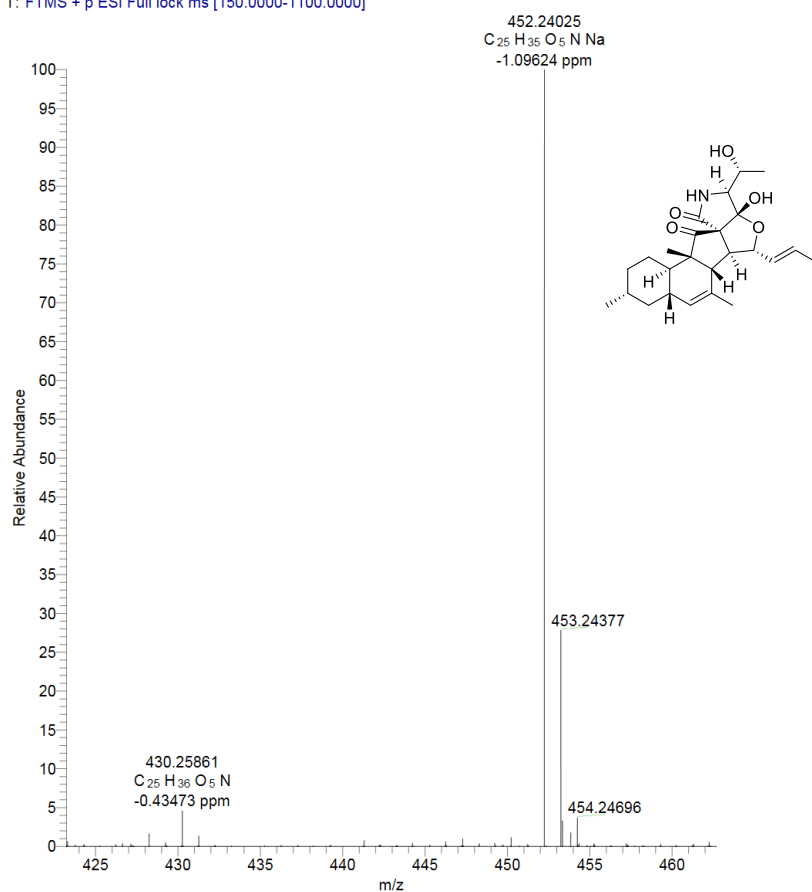


Figure 16S. CD spectrum of zofielliamide B (2).

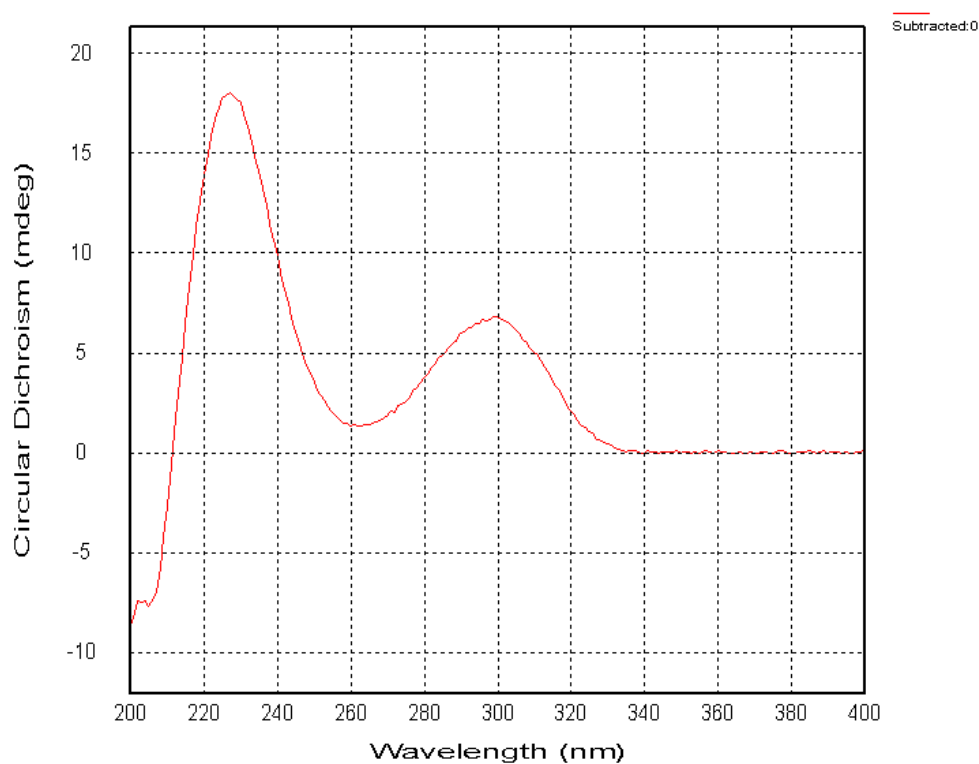


Figure 17S.  $^1\text{H}$  NMR (600 MHz, methanol- $d_4$ ) spectrum of zofielliamide C (**3**)

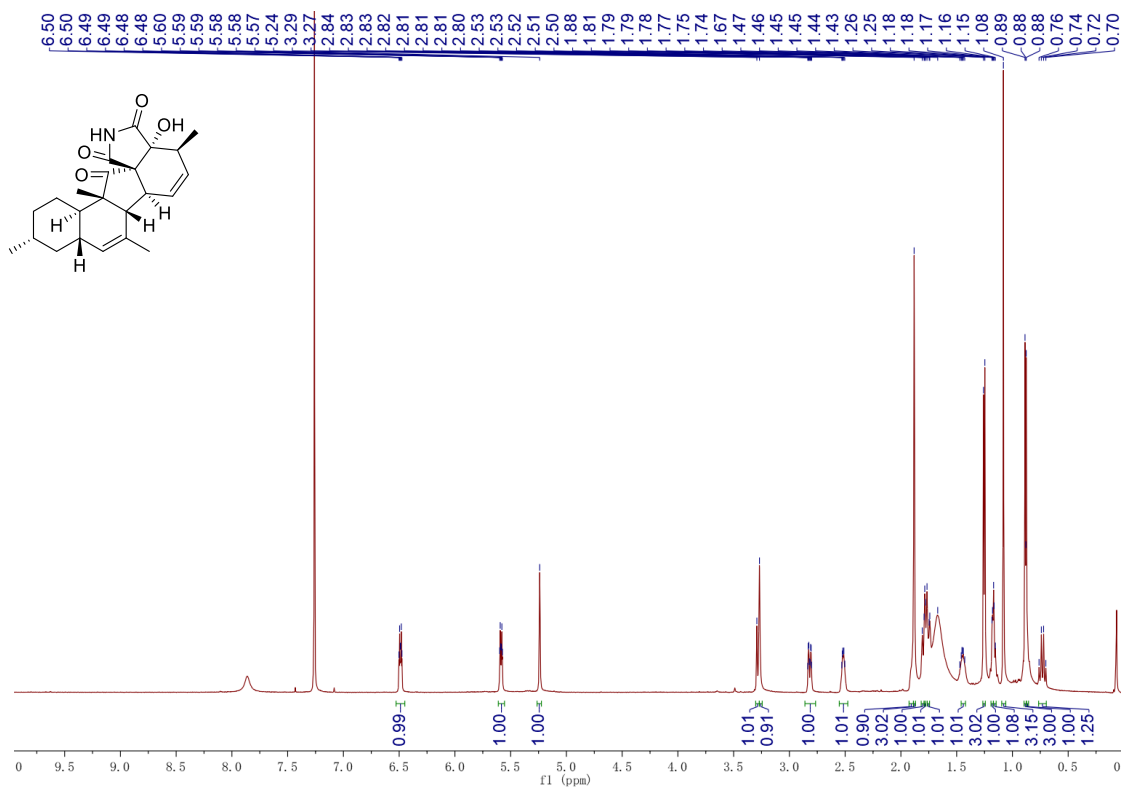


Figure 18S.  $^{13}\text{C}$  NMR (150 MHz, methanol- $d_4$ ) spectrum of zofielliamide C (**3**)

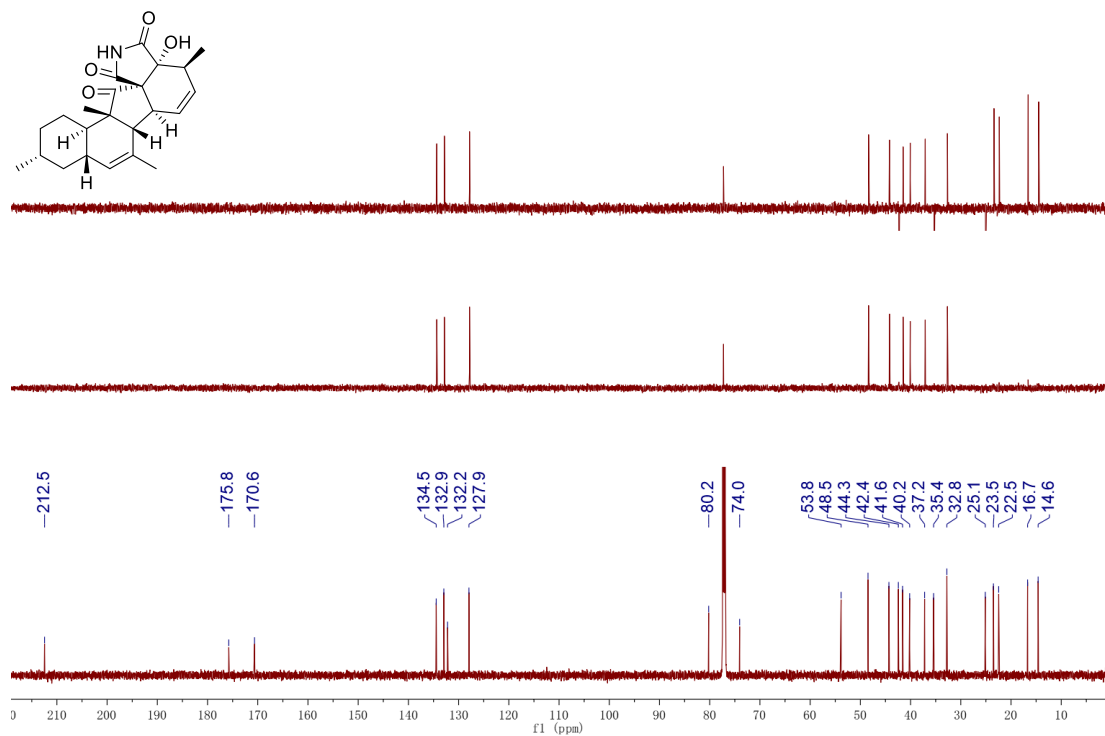


Figure 19S.  $^1\text{H}$ - $^1\text{H}$  COSY spectrum of zofielliamide C (3)

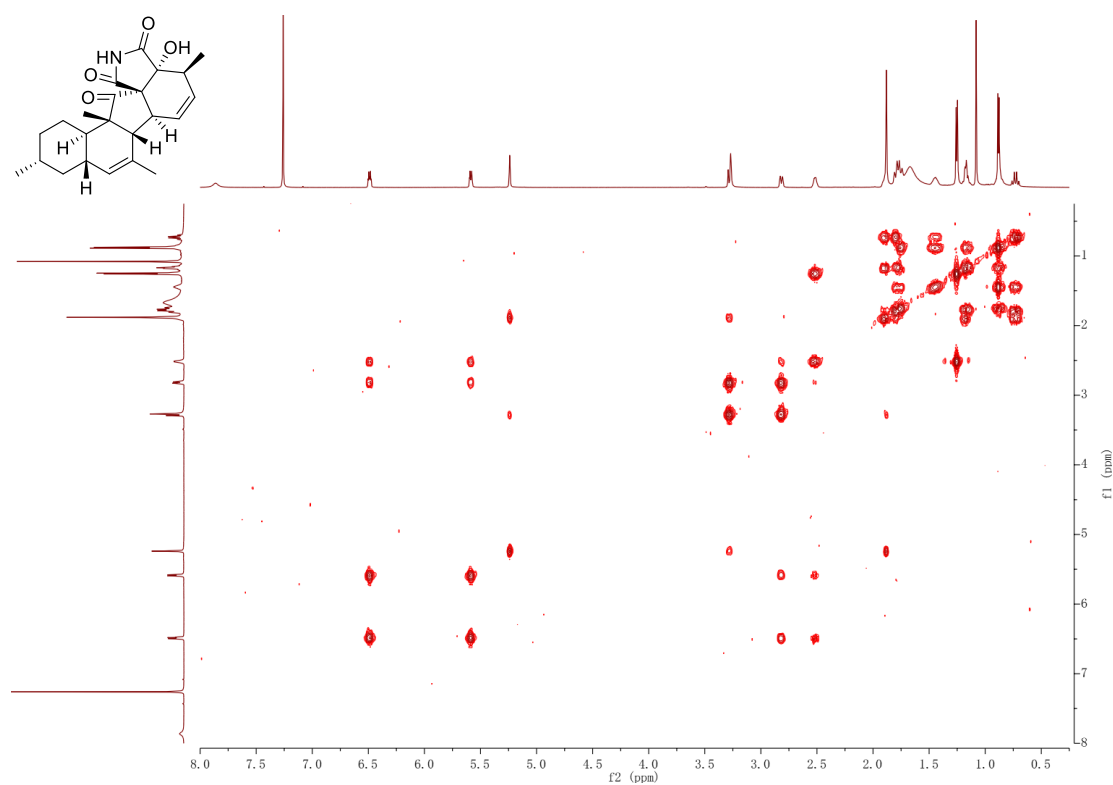


Figure 20S. HMQC spectrum of zofielliamide C (3)

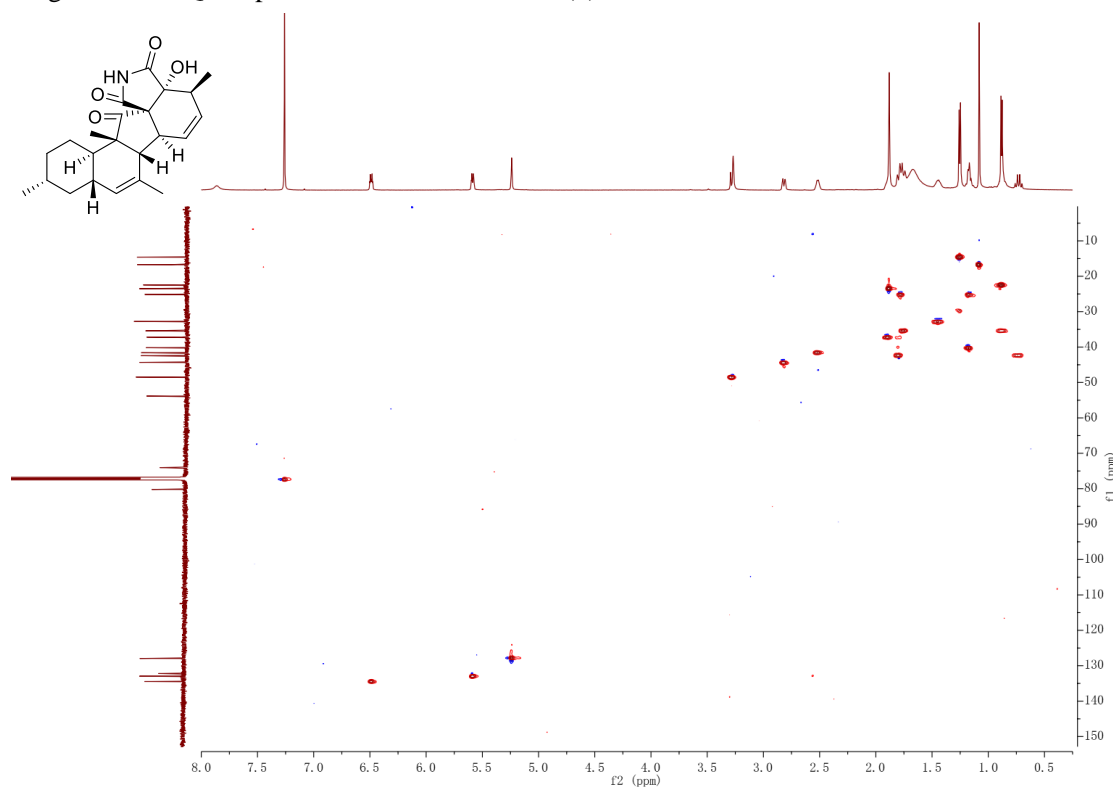


Figure 21S. HMBC spectrum of zofielliamide C (3)

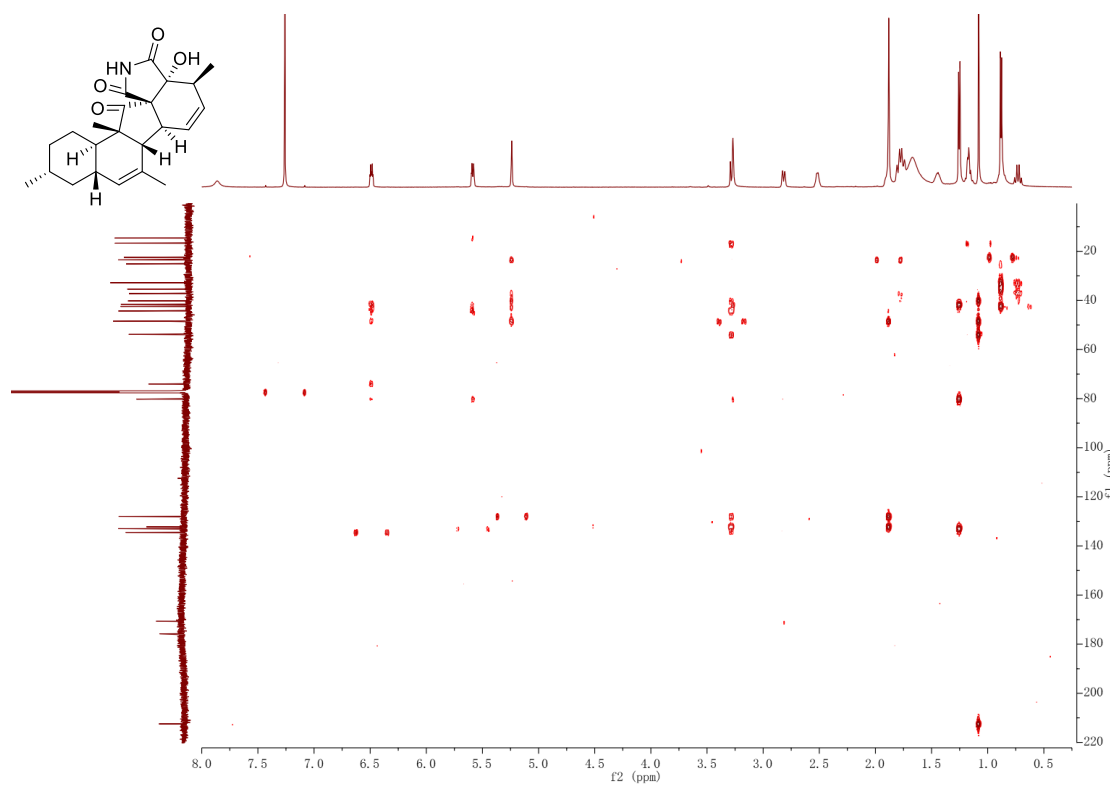


Figure 22S. ROESY spectrum of zofielliamide C (3)

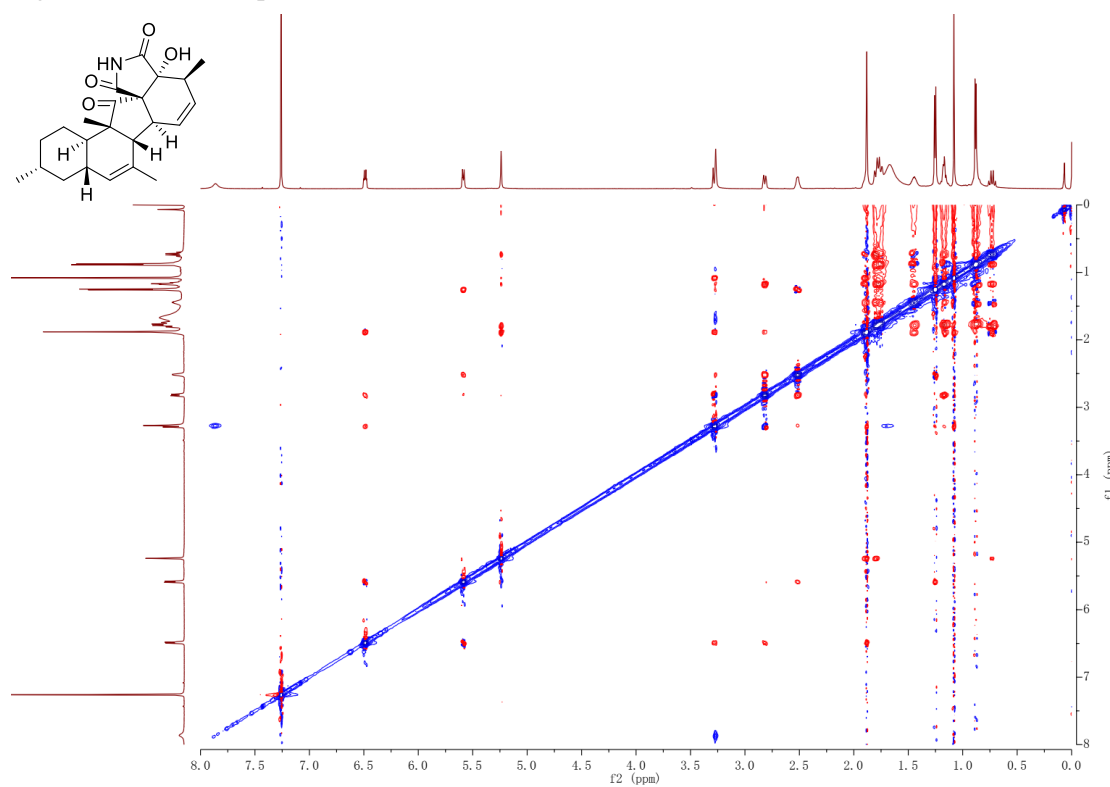


Figure 23S. HRESIMS of zofielliamide C (3)

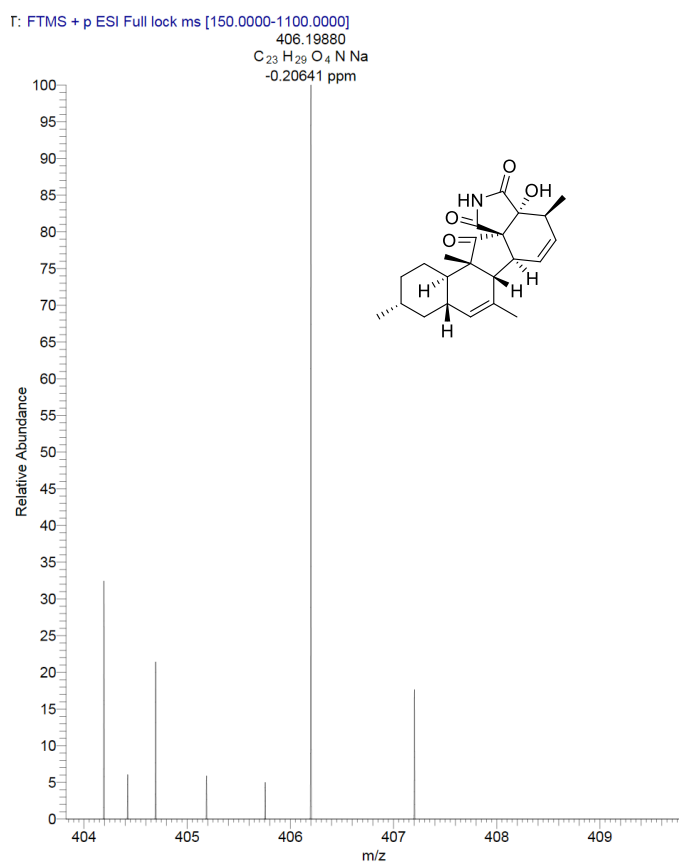


Figure 24S. CD spectrum of zofielliamide C (3)

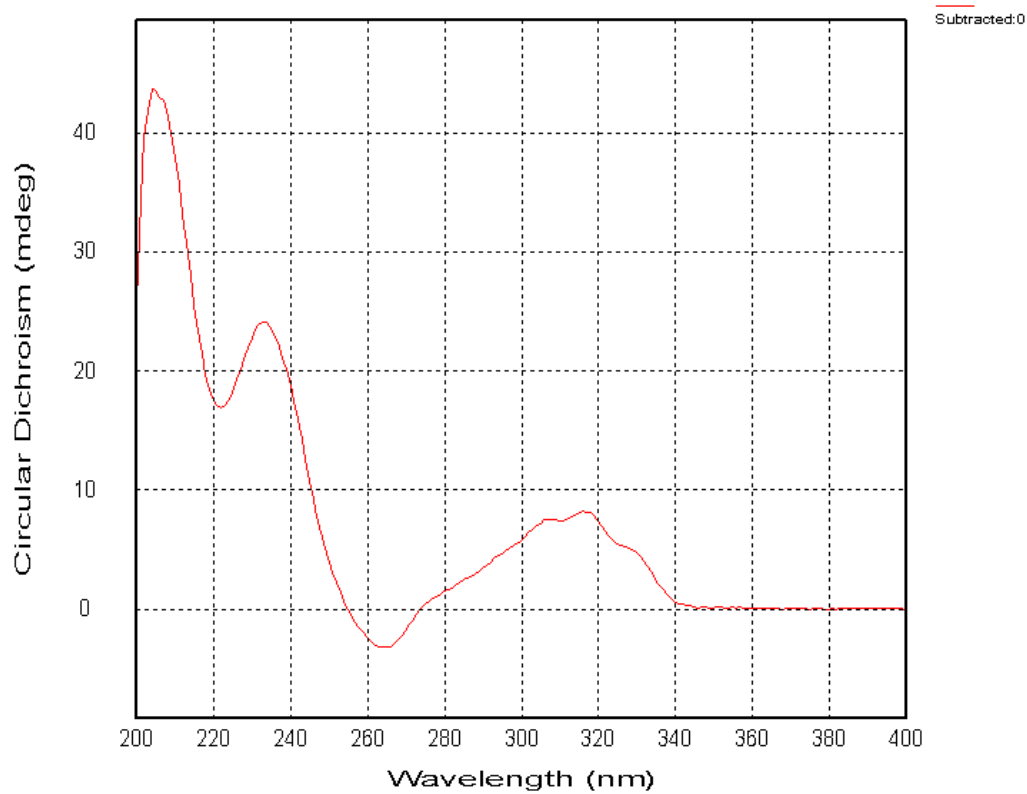


Figure 25S.  $^1\text{H}$  NMR (600 MHz, methanol- $d_4$ ) spectrum of zofielliamide D (**4**)

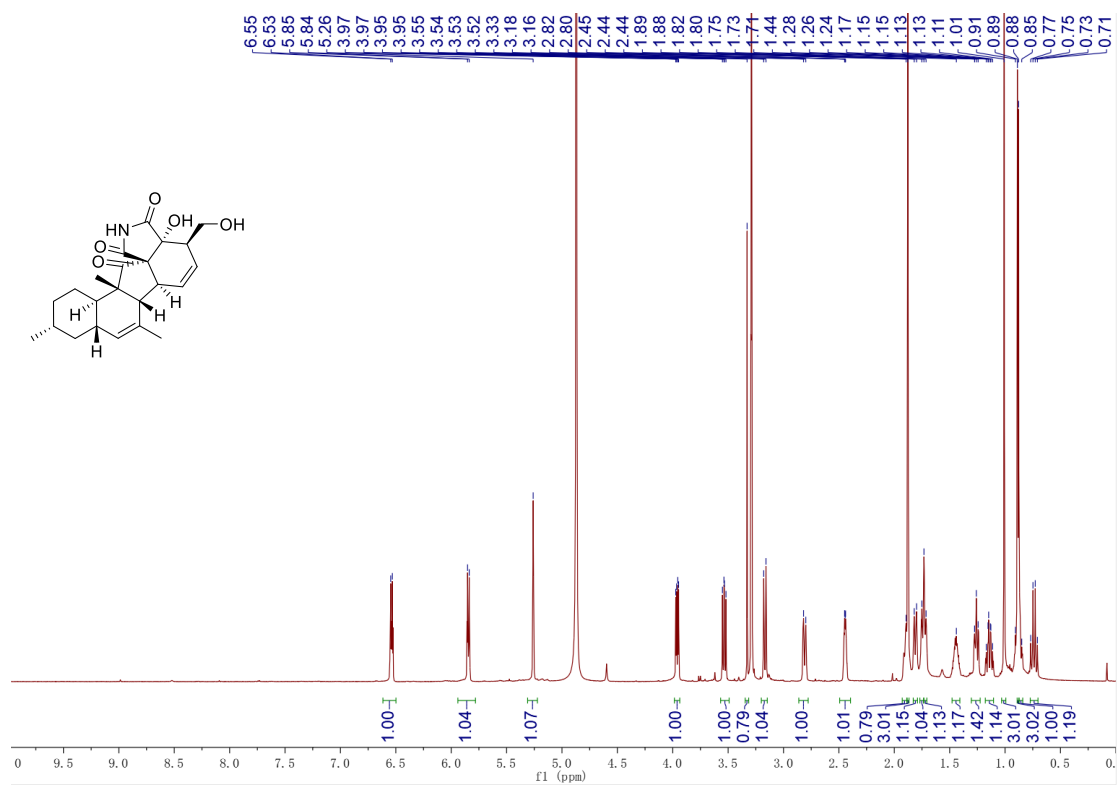


Figure 26S.  $^{13}\text{C}$  NMR (150 MHz, methanol- $d_4$ ) spectrum of zofielliamide D (**4**)

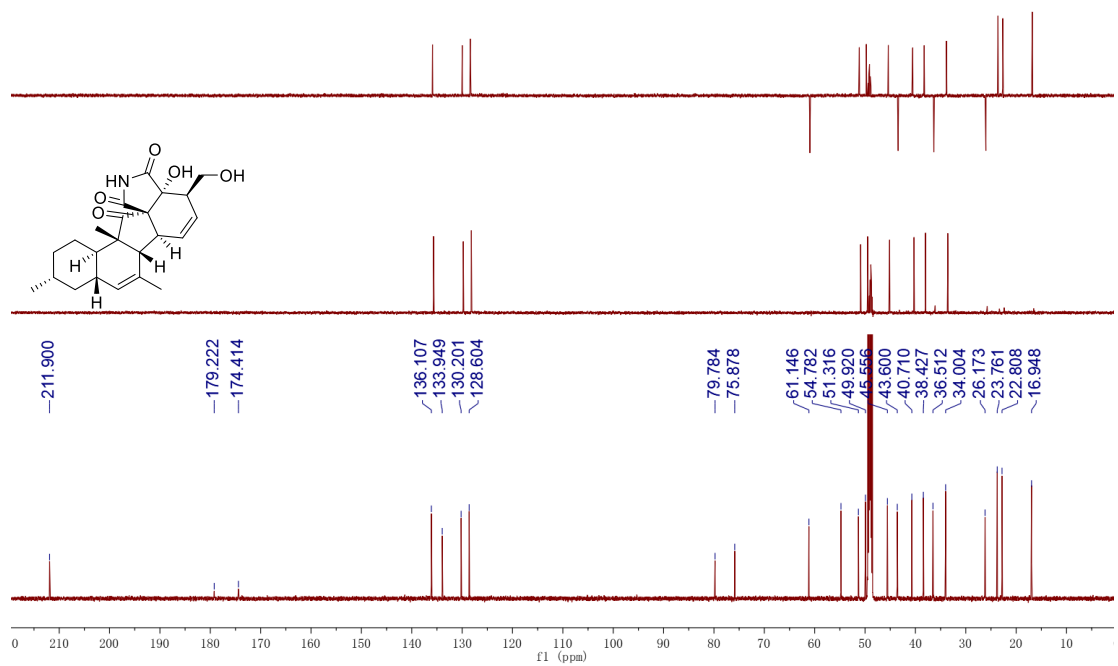


Figure 27S.  $^1\text{H}$ - $^1\text{H}$  COSY spectrum of zofielliamide D (4)

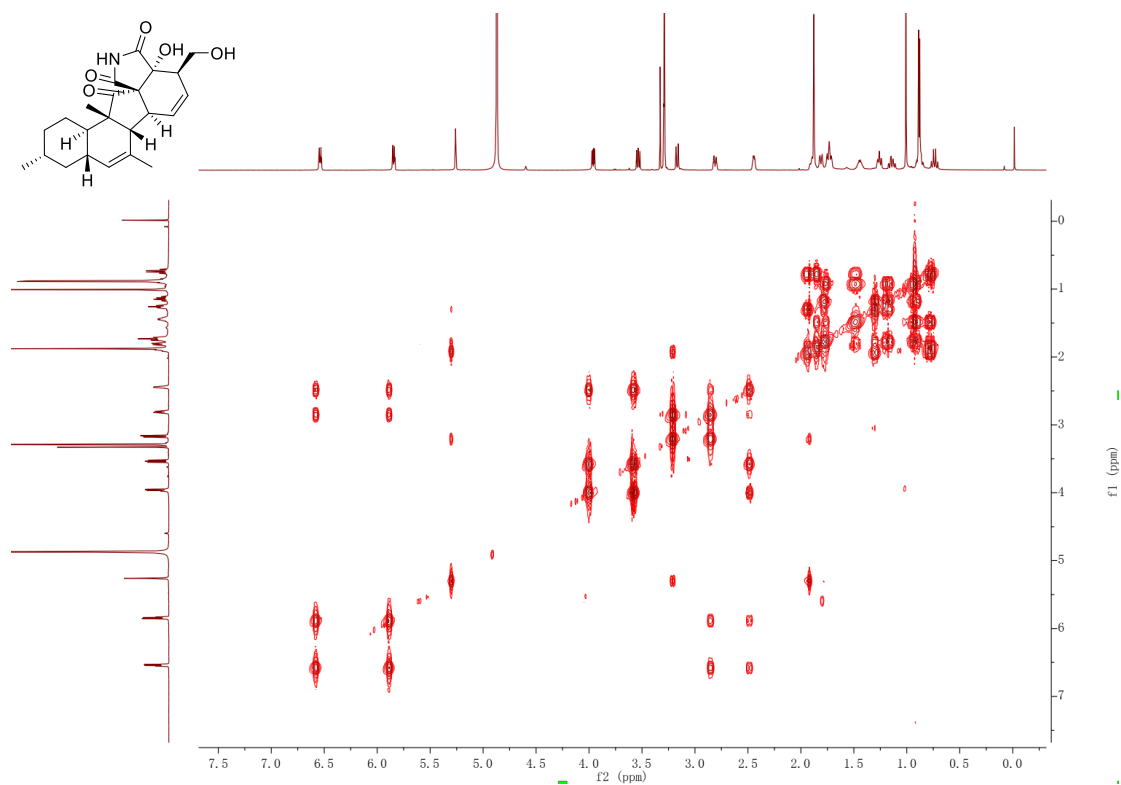


Figure 28S. HQSC spectrum of zofielliamide D (4)

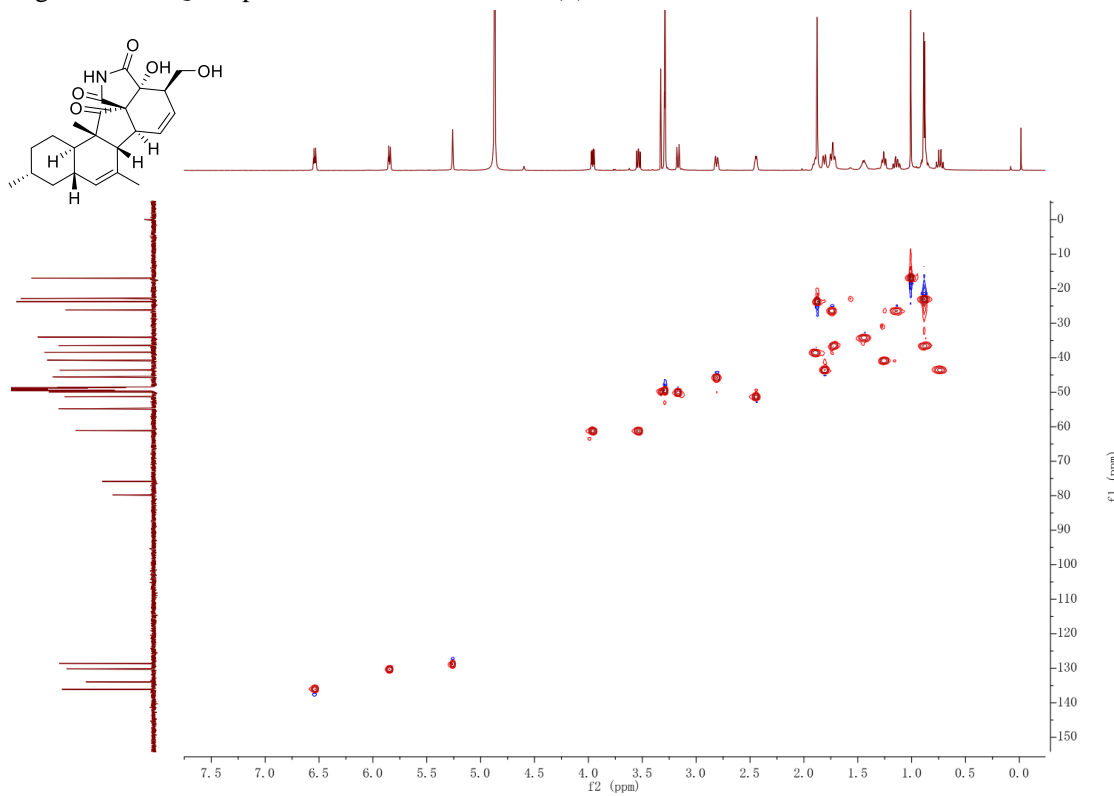


Figure 29S. HMBC spectrum of zofielliamide D (4)

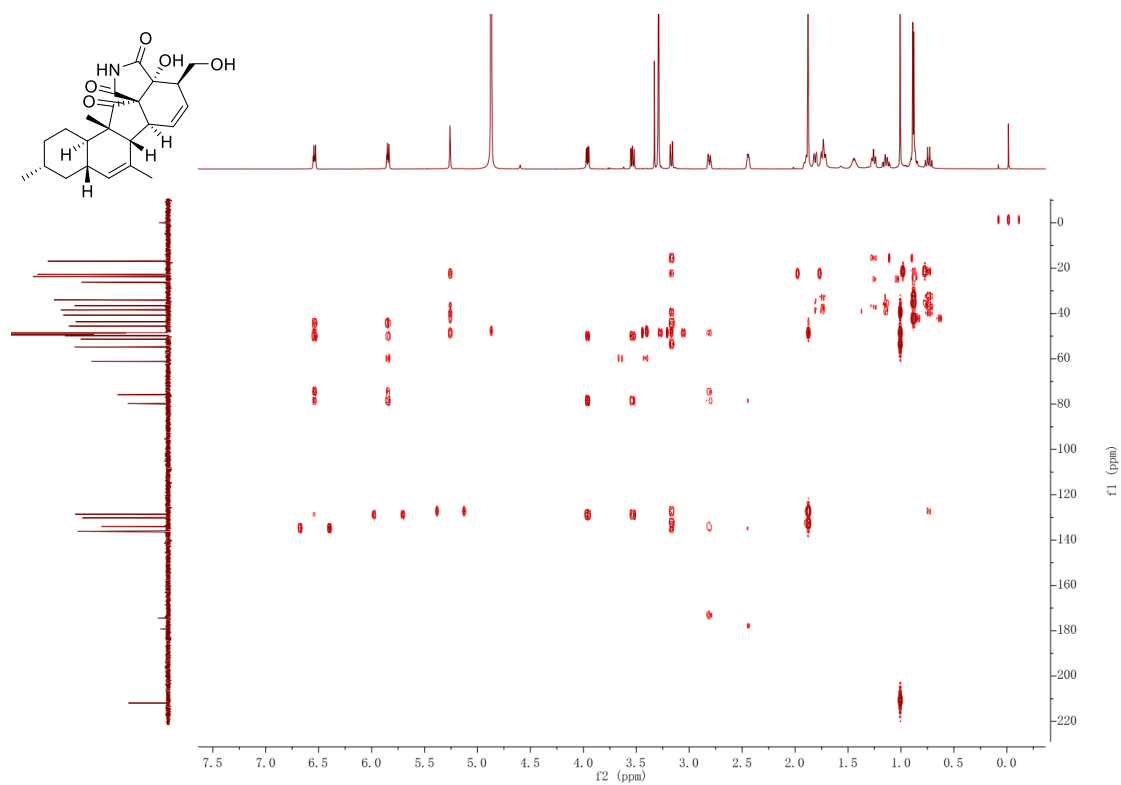


Figure 30S. ROESY spectrum of zofielliamide D (4)

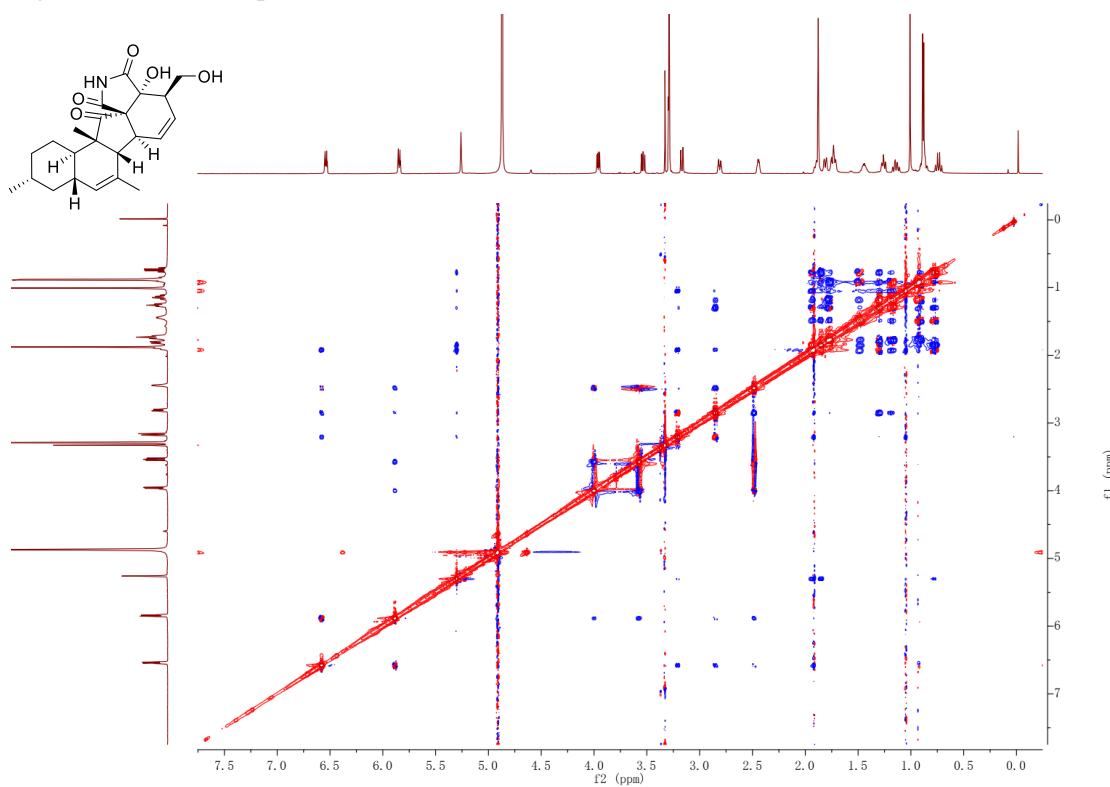




Figure 31S. HRESIMS of zofielliamide D (4)

T: FTMS + p ESI Full ms [150.0000-1100.0000]

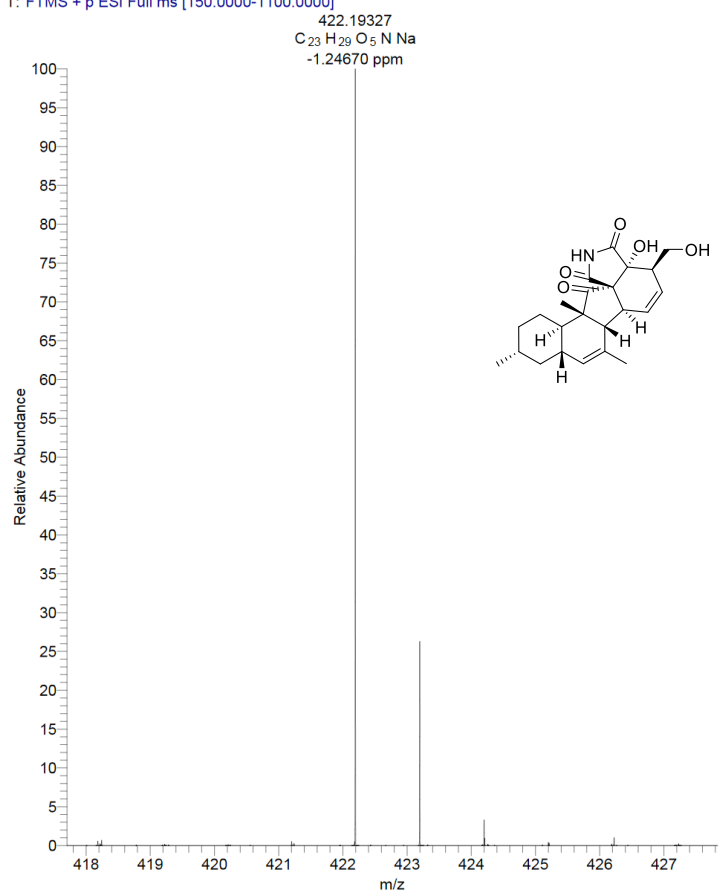


Figure 32S. CD spectrum of zofielliamide D (4)

