

SUPPLEMENTARY INFORMATION

Carbon nitride used as a reactive template to prepare mesoporous molybdenum sulfide and nitride.

Daria Ryaboshapka, Pavel Afanasiev

Univ Lyon, Univ. Claude Bernard Lyon 1, CNRS, UMR5256, IRCELYON, F-69626, Villeurbanne, France.

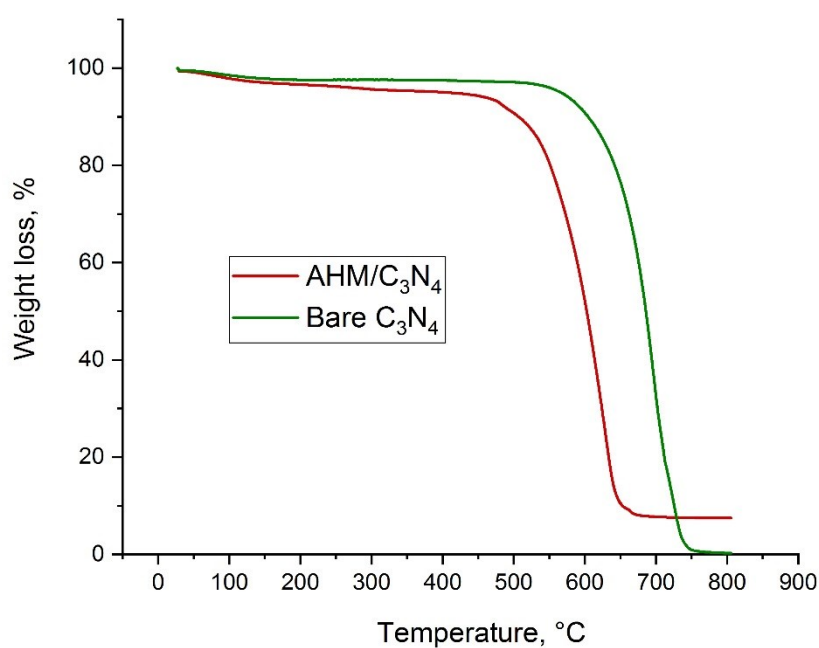


Fig. S1 TG curves for AHM/C₃N₄ and bare C₃N₄

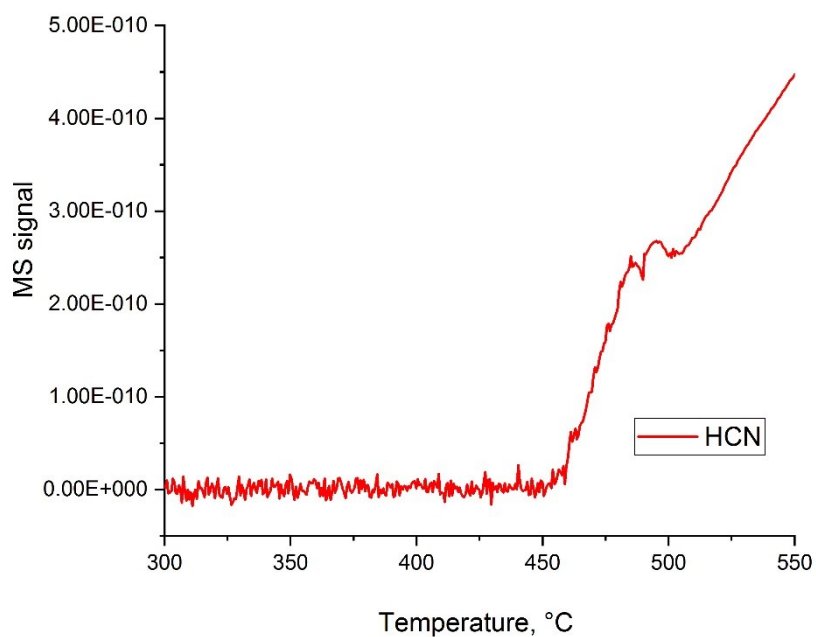


Fig. S2 Mass spectrum recorded during preparation of Mo₂N-CN

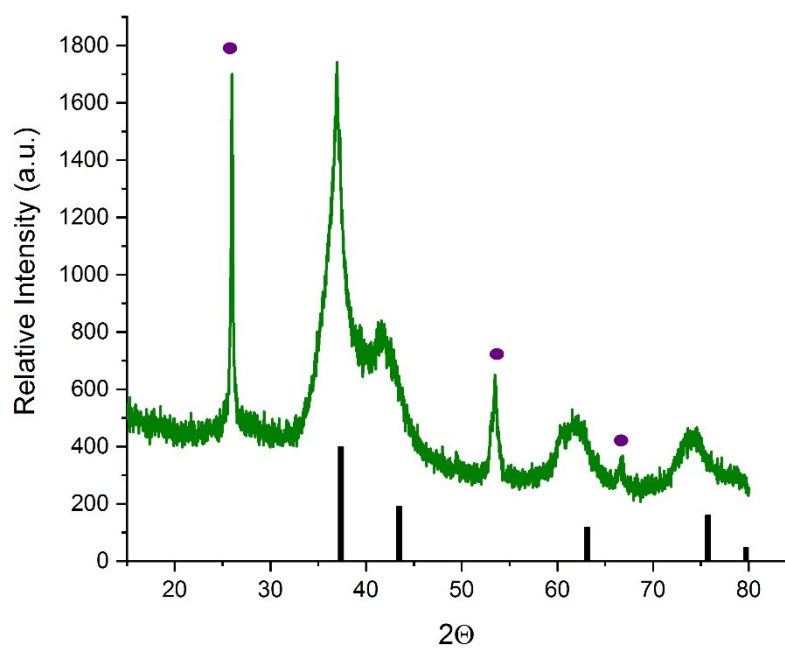


Fig. S3 Diffractogram of the sample prepared from AHM/C₃N₄ in N₂ flow at 650 °C, black bars correspond to Mo₂N phase (00-025-1366) and violet circles correspond to MoO₂ phase (01-078-1070)

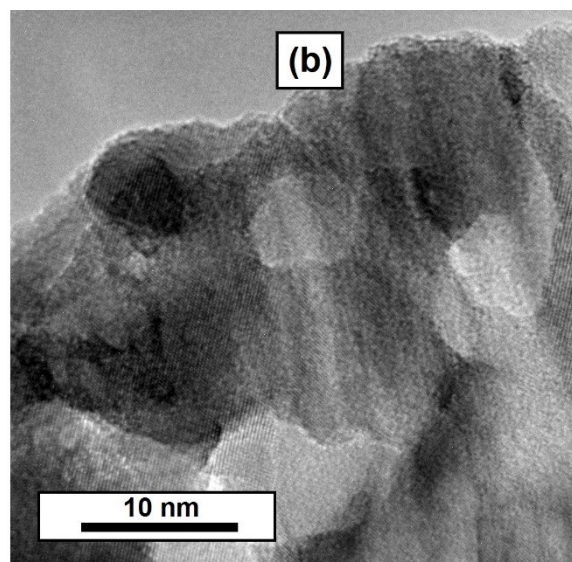
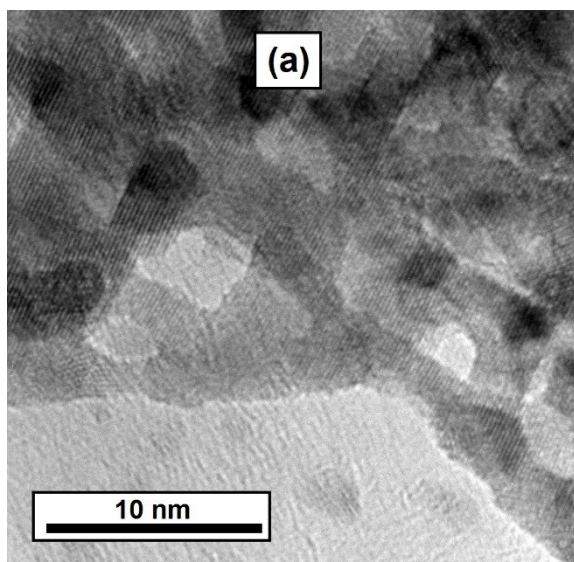


Fig. S4 TEM microphotographs of reference sample (AHM/C₃N₄ treated in N₂ flow at 650 °C)

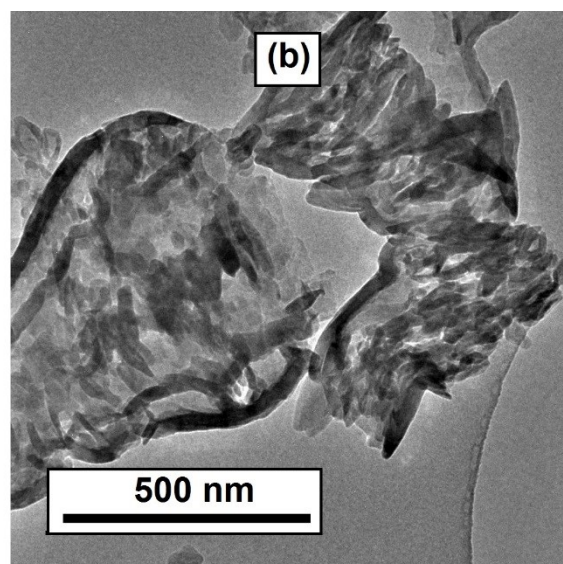
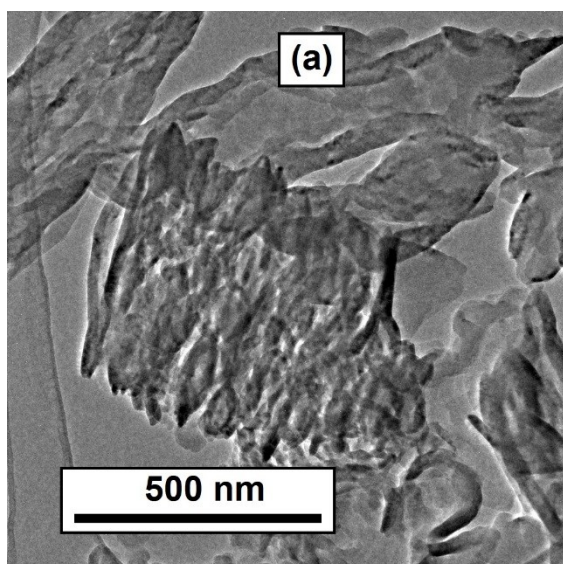


Fig. S5 Low magnification TEM images of C₃N₄

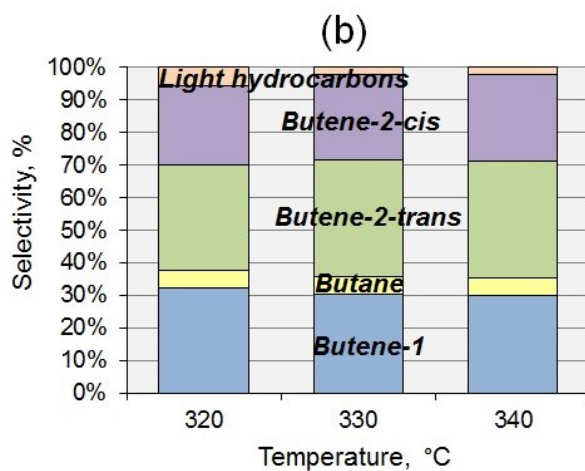
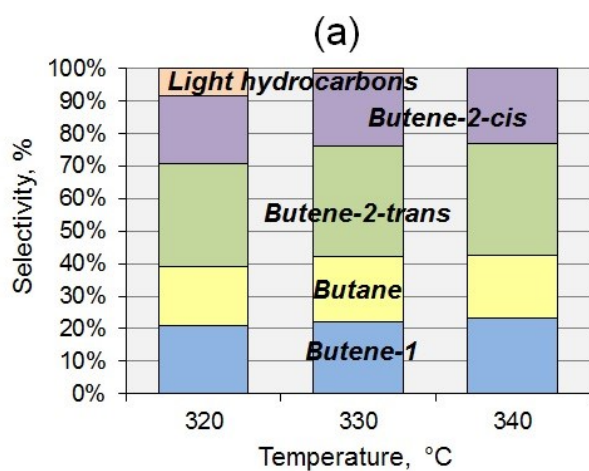


Fig. S6 Selectivity distributions in HDS for (a) Mo₂N-CN, (b) MoS₂-CN

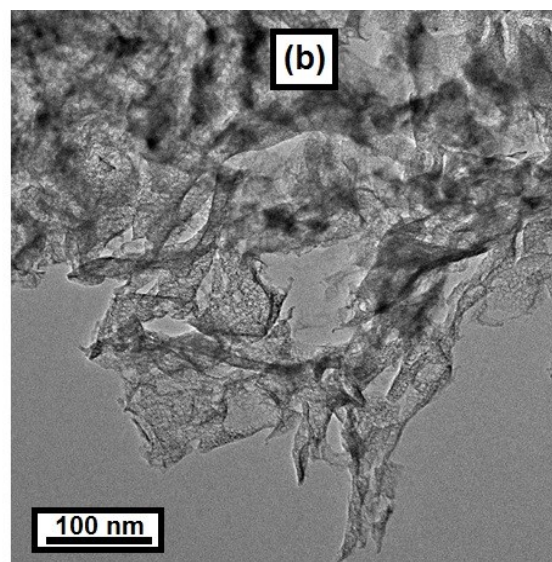
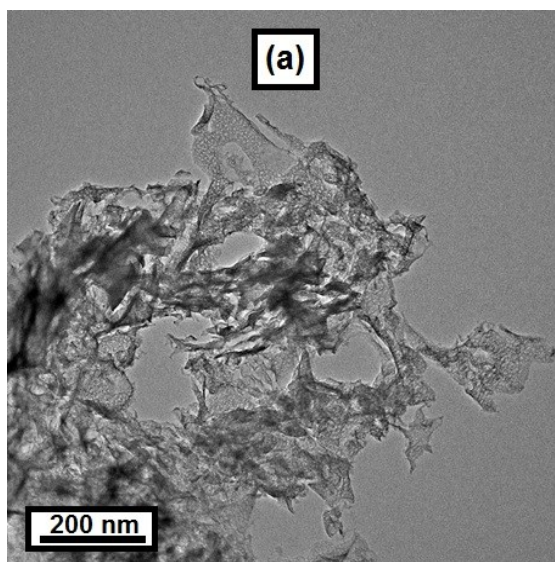


Fig. S7 TEM images of Mo₂N-CN after HDS