

Supporting Information

Development of pH-Sensitive Functionalized Metal Organic Framework: *In-Vitro* Study for Simultaneous Delivery of Doxorubicin and Cyclophosphamide in Breast Cancer

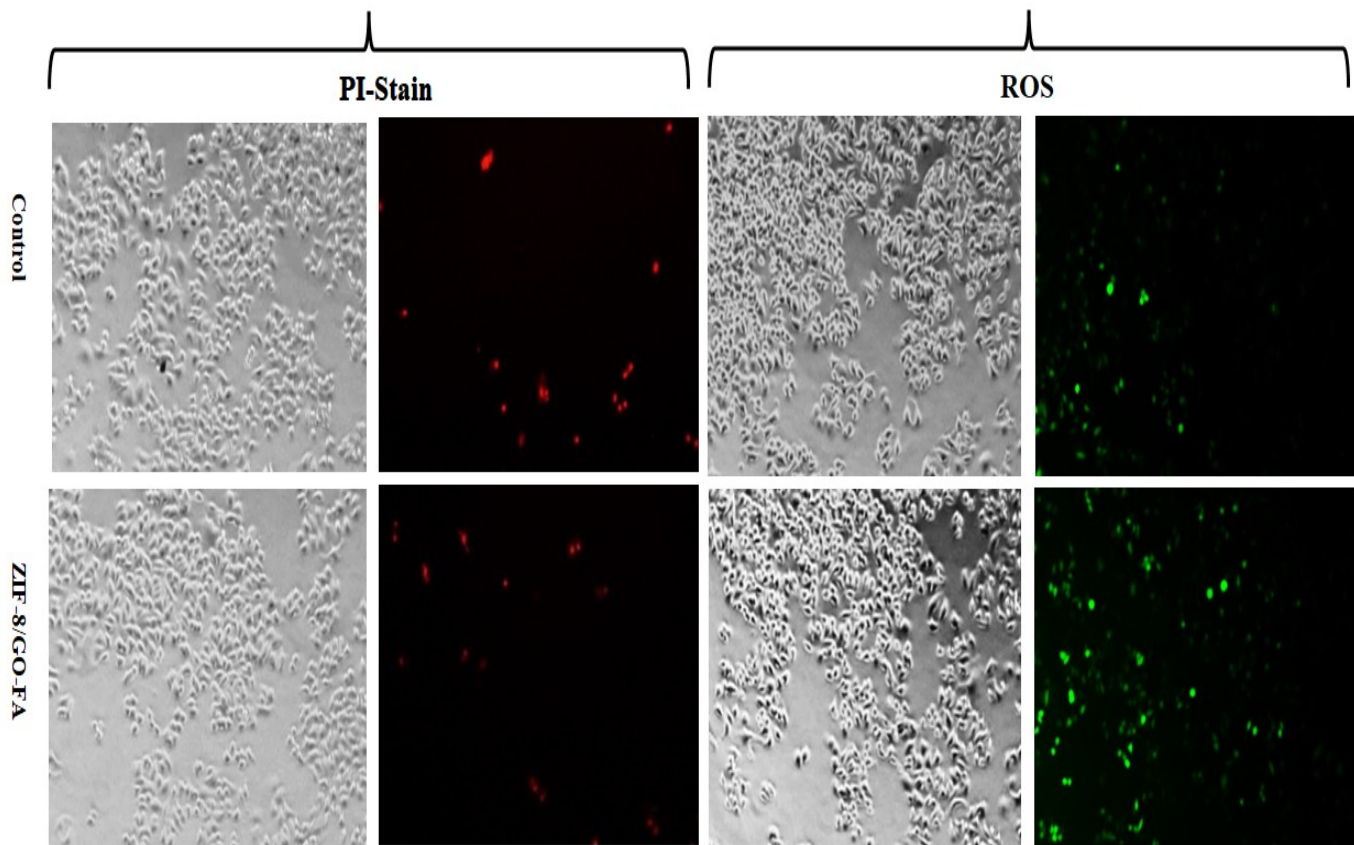
Ragini Singh^a, Binayak Kumar^{a,#}, Ram Krishna Sahu^{a,#}, Soni Kumari^{a,#}, Chandan Bhogendra Jha^{b,#}, Nahar Singh^c, Rashi Mathur^b, Suresh T Hedau^{a*}

^a Division of Molecular Oncology, ICMR-National Institute of Cancer Prevention and Research, I-7, Sector 39, Noida – 201301, Gautam Budha Nagar, U.P., India

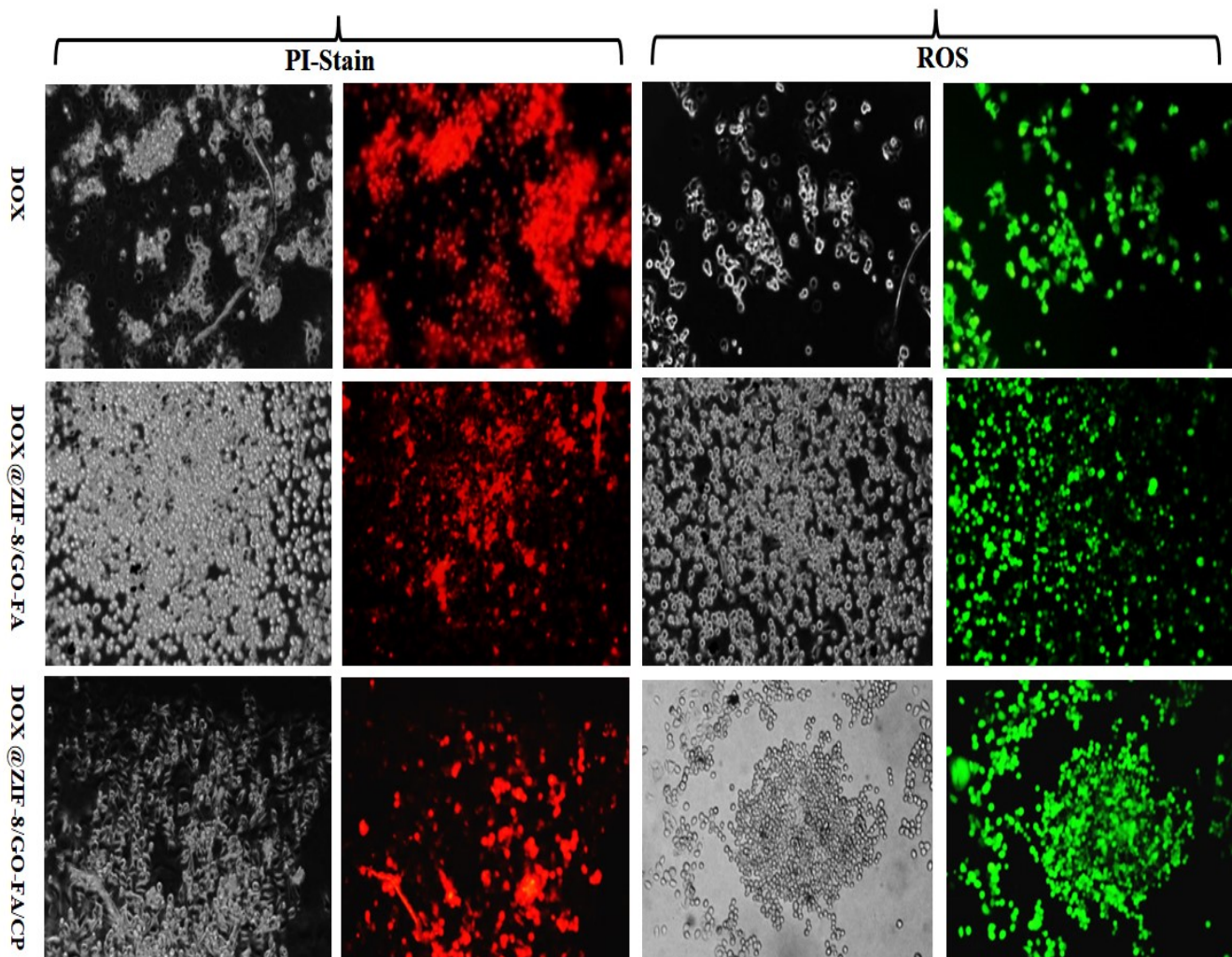
^b Division of Cyclotron and Radiopharmaceutical Sciences, Institute of Nuclear Medicine and Allied Sciences, Defense Research and Development Organization, Brig. S.K. Mazumdar Marg, Delhi 110054, India

^c CSIR-National Physical Laboratory, New Delhi 110012, India

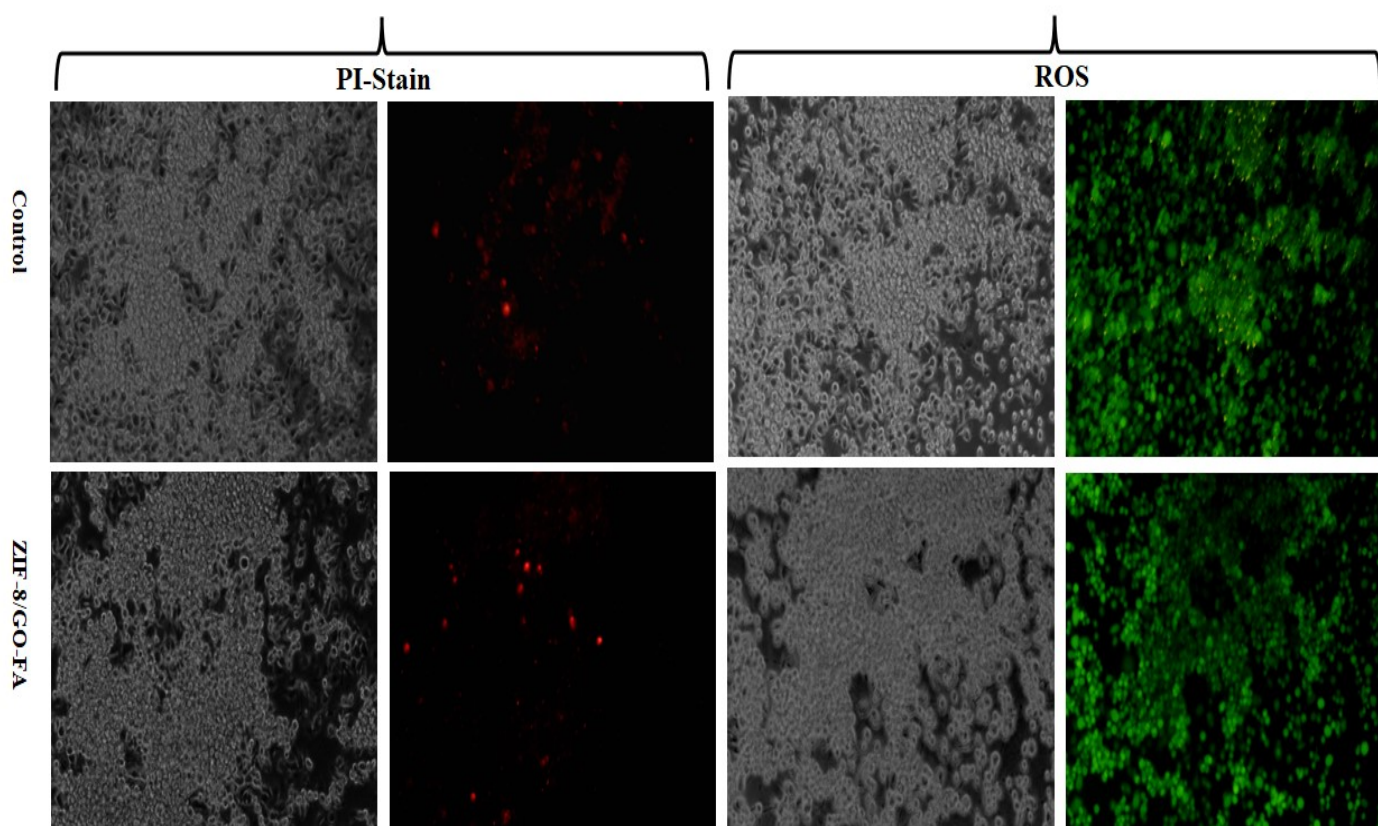
Email: suresh.hedau@gov.in



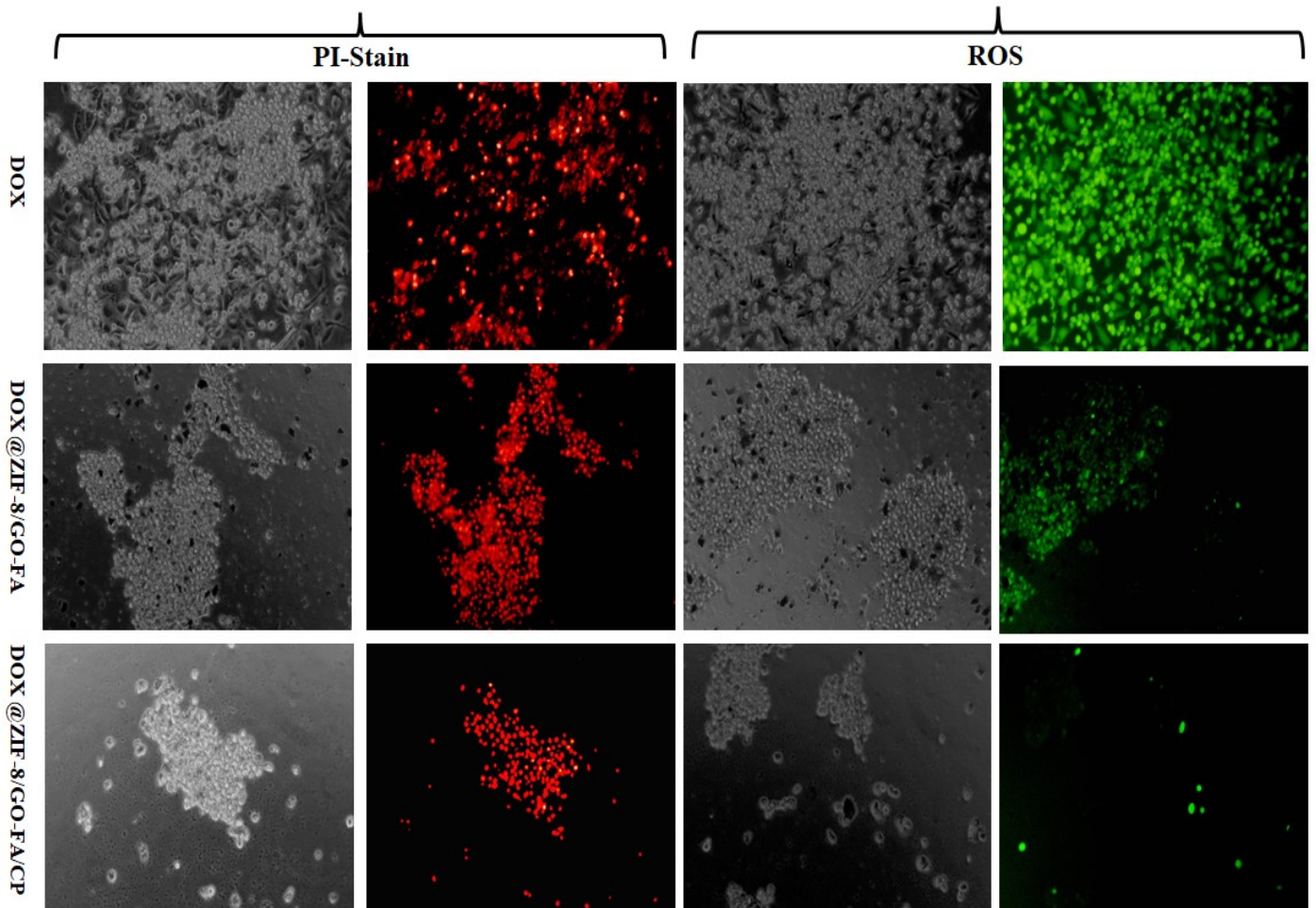
SI Fig. 1 Fluorescence microscope images of PI-staining and ROS-generation in MCF-7 cells after 24 h incubation with control, ZIF-8/GO-FA, at 20X magnification.



SI Fig. 2 Fluorescence microscope images of PI-staining and ROS-generation in MCF-7 cells after 24 h incubation with DOX, DOX@ZIF-8/GO-FA, and DOX@ZIF-8/GO-FA/CP at 20X magnification.



SI Fig. 3 Fluorescence microscope images of PI-staining and ROS-generation in MDA MB-231 cells after 24 h incubation with control, ZIF-8/GO-FA at 20X magnification.



SI Fig. 4 Fluorescence microscope images of PI-staining and ROS-generation in MDA MB-231 cells after 24 h incubation with DOX, DOX@ZIF-8/GO-FA, and DOX@ZIF-8/GO-FA/CP at 20X magnification.