

Supplementary Information

1

2

3

4 Liposome leakage and increased cellular
5 permeability caused by guanidine-based oligomers:
6 Effects of liposome composition on liposome
7 leakage and human lung epithelial barrier
8 permeability

9 Yeonjeong Ha¹, Yerim Koo¹, Seon-Kyung Park¹, Ga-Eun Kim², Han Bin Oh³, Ha Ryong

10 Kim^{2,*}, Jung-Hwan Kwon^{1,*}

11 ¹Division of Environmental Science and Ecological Engineering, Korea University, 145 Anam-
12 ro, Seongbuk-gu, Seoul 02841, Republic of Korea

13 ²College of Pharmacy, Daegu Catholic University, 13-13 Hayang-ro, Hayang-eup, Gyeongsan
14 38430, Republic of Korea

15 ³Department of Chemistry, Sogang University, 35 Baekbeom-ro, Mapo-gu, Seoul 04107,
16 Republic of Korea

17

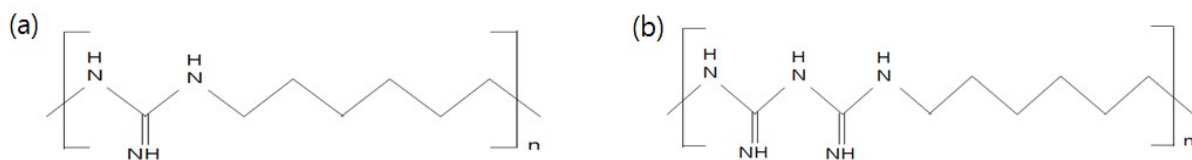
18

19 ***Corresponding Author**

20 Ha Ryong Kim (E-mail: kimhr@cu.ac.kr)

21 Jung-Hwan Kwon (E-mail: junghwankwon@korea.ac.kr)

22

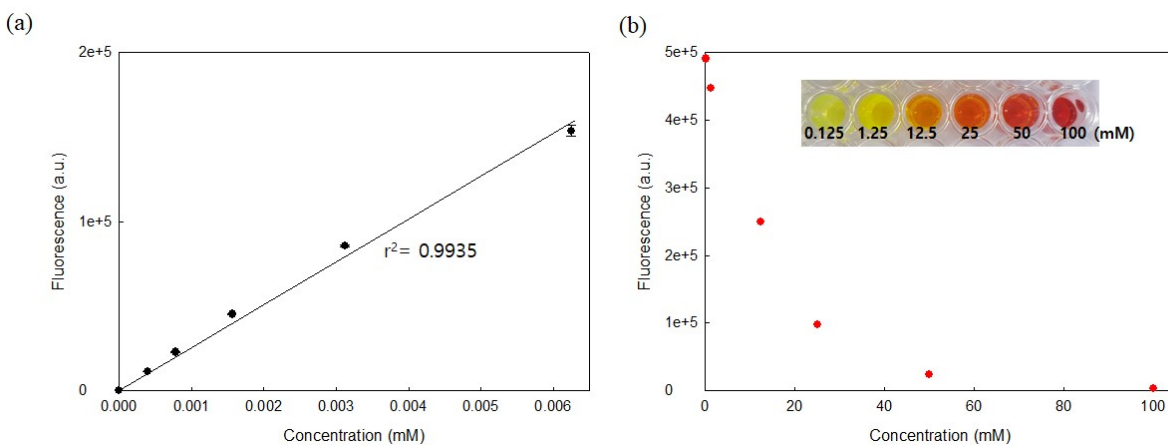


23

24 **Figure S1.** Representative molecular structures of (a) PHMG and (b) PHMB

25

26



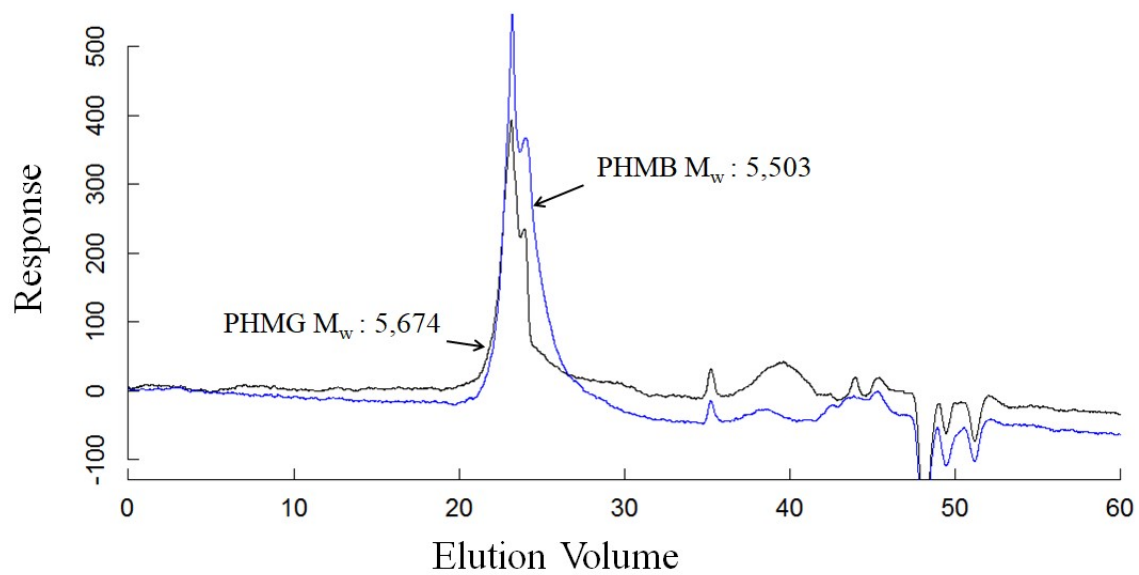
27

28 **Figure S2.** Fluorescence intensity of (a) low concentration (0 – 0.00625 mM) and (b) high concentration (0.125 -
 29 100 mM) of 5(6)-carboxyfluorescein at pH ~7.4. Insert in Figure S1(b) shows the self-quenching of 5(6)-
 30 carboxyfluorescein at high concentrations.

31

32

33



34

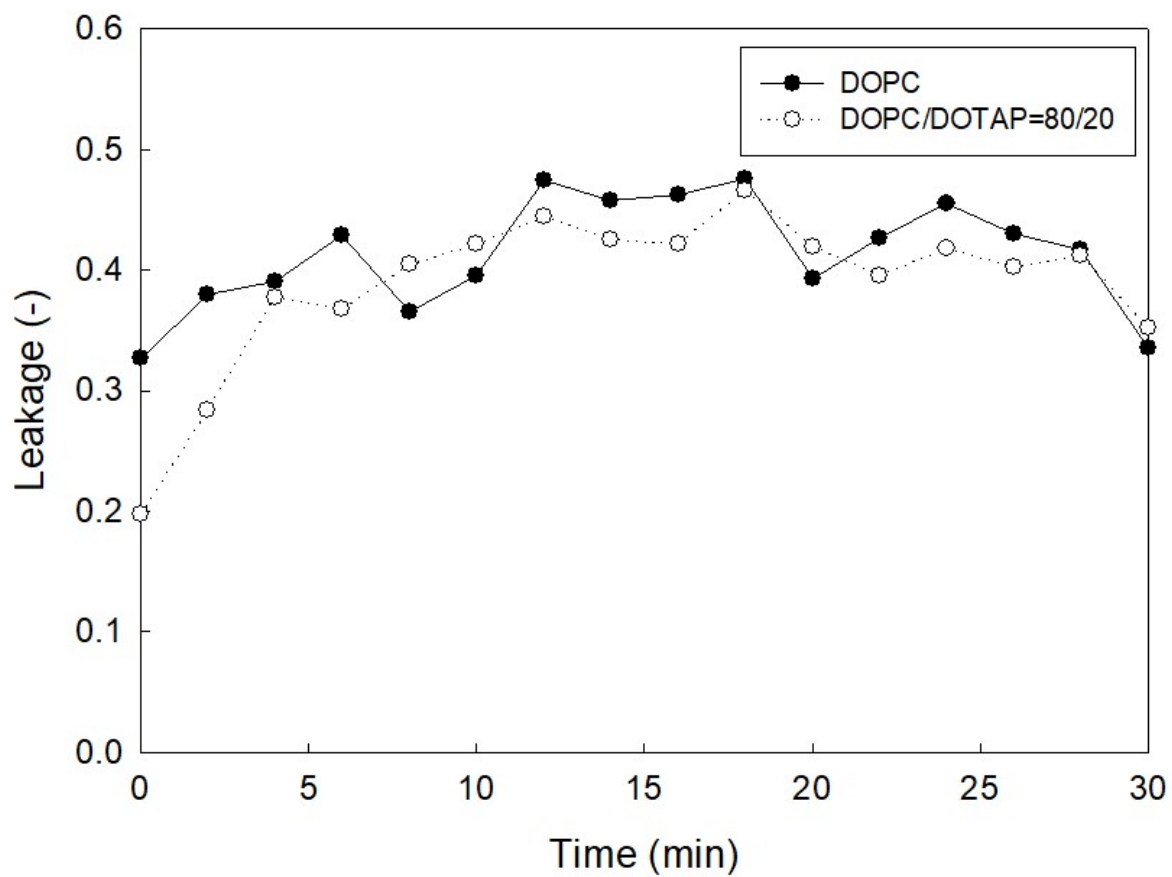
35 **Figure S3.** GPC spectrum of PHMG (1,000 mg L⁻¹) and PHMB (1,000 mg L⁻¹). The weight-average molecular
36 mass (M_w) of PHMG and PHMB based on the first peak was 5,674 Da and 5,503 Da, respectively.

37

38

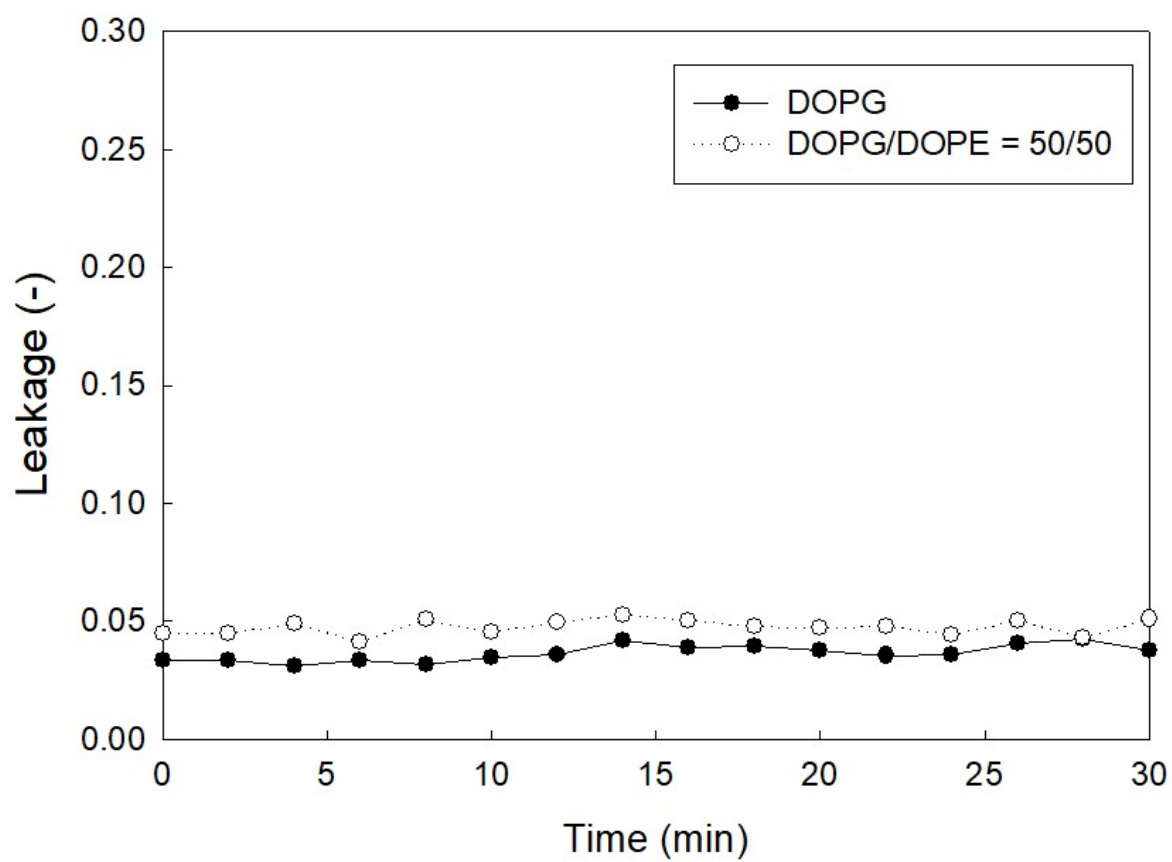
39

40



41

42 **Figure S4.** 5(6)-Carboxyfluorescein leakage of the DOPC and DOPC/DOTAP (80/20) liposomes by 23 mg L⁻¹
43 PHMG, polyhexamethylene guanidine.



44

45 **Figure S5.** 5(6)-Carboxyfluorescein leakage of the DOPG and DOPG/DOPE (50/50) liposomes by 23 mg L⁻¹
46 PHMG, polyhexamethylene guanidine.

47