

Supporting Information

Microwave-assisted controlled-isomerization during glucose conversion into lactic acid over a Sn-Beta catalyst

Wang Liu,^{ab†} Zhimin Zhou,^{ab†} Zhaohui Guo,^{bc} Zhangqian Wei,^{ab} Yanfei Zhang,^{ab} Xinpeng Zhao,^{ab} Gai Miao,^a Lijun Zhu,^{ab} Hu Luo,^a Mengya Sun,^{ab} Yingxiong Wang,^{*c} Shenggang Li,^{*ad} Lingzhao Kong^{*ab}

a CAS key Laboratory of Low-carbon conversion Science and Engineering, Shanghai Advanced Research Institute, Chinese Academy of Sciences, Shanghai 201210 (P. R. China). E-mail: lisg@sari.ac.cn, konglz@sari.ac.cn

b University of Chinese Academy of Sciences, Beijing 100049 (P. R. China)

c State Key Laboratory of Coal Conversion, Institute of Coal Chemistry, Chinese Academy of Sciences, Taiyuan 030001 (P. R. China). E-mail: wangyx@sxicc.ac.cn

d School of Physical Science and Technology, ShanghaiTech University, Shanghai 201213 (P. R. China)

† These authors contributed equally to this work.

Table of Contents

Experimental Procedures	2
1. General	2
2. Synthesis of Sn-Beta zeolite and the “monolithic” catalyst	2
3. Catalytic reaction and product analysis	2
3.1 Catalytic reaction under conventional heating	2
3.2 Catalytic reaction under microwave heating	2
3.3 Product analysis	2
3.4 Comparison of heating and cooling processes of two heating methods	3
4. Sn-Beta catalyst characterization	3
5. H/D exchange experiment and $^1\text{H}/^{13}\text{C}$ NMR analysis	3
5.1 H/D exchange experiment	3
5.2 ^1H NMR analysis	3
5.3 ^{13}C NMR analysis	3
6. Density functional theory (DFT) calculations	3
6.1 Dipole moment (μ)	3
6.2 Adsorption energies (E_{ads})	3
6.3 Calculation of transition state	4
Results and Discussion	5
Coordinates of the adsorption structures at the open Sn site	28
References	56
Author Contributions	56

Experimental Procedures

1. General

All commercial reagents were used directly without further purification, unless otherwise stated. All chemicals were used as received from the commercial suppliers: glucose (AR, 99.0 %), lactic acid (LA) (≥ 95 %), $\text{SnCl}_4 \cdot 5\text{H}_2\text{O}$ (AR, ≥ 99.0 %), hydrofluoric acid (HF) (GR, ≥ 40 %), tetraethyl orthosilicate (TEOS) (99.9 %), tetraethylammonium hydroxide (TEAOH) (99.99 %), fructose (AR, 99.0 %), 1,3-dihydroxyacetone (DHA) (GC, ≥ 95 %), deuterium water (D_2O) (99.9%). D-Fructose ($1\text{-}^{13}\text{C}$ labeled, AR, 99%) , silicon dioxide (SiO_2) (AR, 40-60 mesh), silicon carbide (SiC) (99.9%) was purchased from Cambridge Isotope Laboratories, Inc. Deionized water was prepared by HITECH Master touch-D. Microwave heating reaction was performed on Milestone easyCONTROL-640. Centrifugation of the reaction mixture was performed on Thermo LYNX6000.

2. Synthesis of Sn-Beta zeolite and the monolithic catalyst

The Sn-Beta zeolite was synthesized by the rapid synthesis method in literature. In a typical synthesis procedure, 30.6 g TEOS was added to 33.1 g TEAOH with gently stir for 2 h at room temperature until the two-phase system turned into one phase. Then, 0.257 g $\text{SnCl}_4 \cdot 5\text{H}_2\text{O}$ was added into the solution and stirred for another 1 h at room temperature. During the stirring process, add 0.3 wt% of dealuminated molecular sieve seed crystals, and then evaporate the ethanol and part of the water in drying oven set as 70 °C to make the material reach the following ratio: 0.005 SnCl_4 : 0.55 TEAOH: 0.55 HF: 7.5 H_2O . HF was added into sol state and suddenly transformed to solid gel which would be transferred into crystallizing kettle. After that the kettle was heated at 140 °C for 7 days. After taking it out, it was washed with deionized water several times by suction filtration, dried and baked in oven at 550 °C for at least 6 h and cooled naturally.

When 0.15 g Sn-Beta was evenly dispersed in the 25 g mixtures of silicon dioxide (SiO_2) and silicon carbide (SiC) by physical mixing the “monolithic” catalyst formed. There were 7 kinds of mass ratio of SiO_2 :SiC including : ∞ (25 g SiO_2) ,250 (24.90 g SiO_2 +0.099 g SiC) ,50 (24.51 g SiO_2 +0.49 g SiC) ,7 (21.875 g SiO_2 +3.125 g SiC) ,3 (18.75 g SiO_2 +6.25 g SiC) ,1 (12.5 g SiO_2 +12.5 g SiC) ,0 (25 g SiC). The “monolithic” catalysts used in different experiments are listed in Table S1.

3. Catalytic reaction and product analysis

3.1 Catalytic reaction under conventional heating

The catalytic conversion of feedstock (glucose, fructose and 1,3-dihydroxyacetone) was carried out in a stainless-steel autoclave (Parr, 100 ml) with an initial N_2 pressure of 4 MPa at 180/200 °C for 30/60 min. The autoclave was needed to warm up from room temperature to targeted temperature controlled by computer. Generally, a mixture of 0.15 g reactant, 0.15 g solid acid catalyst, and 15 ml deionized water mixture were loaded into the sealed autoclave with a stirring speed of 530 rpm. 0.15 g stock was added into 15 ml deionized water forming 10 g/L glucose solution mixed with 25.15 g “monolithic” catalytic if stirring function was not used. After the reaction, the autoclave was cooled with room temperature water and the liquid solution was separated from the solid mixture by centrifugation in 15 min at a stirring speed of 3600 rpm. The collected liquid solution was filtered through 0.45 μm pore-size filters prior to analysis. The separated solid catalyst was washed with water and ethanol mixture for six times and dried at 100 °C overnight for the recycle of catalyst. Glucose isomerization reaction was conducted at 100 °C to avoid further subsequent reactions, and other reaction conditions were same with those of batch lactic acid synthesis reactions.

3.2 Catalytic reaction under microwave heating

The catalytic conversion of stock (glucose, fructose and 1,3-dihydroxyacetone) was carried out in round bottom quartz tubes with a diameter of 25 mm and a height of 115 mm with an initial N_2 pressure of 4 MPa. 0.15 g stock was added into 15 ml deionized water forming 10 g/L glucose solution mixed with 25.15 g “monolithic” catalytic. After sealing the autoclave and connecting the inlet and outlet quartz tubes, N_2 was fed from the top of the reactor. Temperature of the whole reactor were measures by a temperature probe. The quartz tubes were heated up to 140/160/180 °C from room temperature in 5 min for 15/30/45/60 min and cooled by circulating cooling water controlled by computer. After the reaction, the autoclave was cooled without treatment and the liquid solution was separated from the solid mixture by centrifugation in 15 min at a stirring speed of 3600 rpm. The collected liquid solution was filtered through 0.45 μm pore-size filters prior to analysis. Glucose isomerization reaction was conducted at 100 °C to avoid further subsequent reactions, and other reaction conditions were same with those of batch lactic acid synthesis reactions.

3.3 Product analysis

The liquid products were quantified by HPLC (Shimadzu LC-20AD, Aminex HPX-87H ion exclusion column: 300 mm \times 7.8 mm, column temperature: 50 °C, mobile phase: 0.005 M aqueous H_2SO_4 with a flow rate of 0.65 mL/min) with a differential refraction detector (RID-10A) for LA and 5-HMF. The conversion of feedstock was calculated based on the HPLC data using the equation:

$$\text{Conversion} = (\text{moles of feedstock} - \text{moles of feedstock in the resultant liquid determined by HPLC}) \div (\text{moles of feedstock}) \times 100\%.$$

The yields of LA, fructose and 5-HMF were calculated based on carbon via the equations:

Yield = (moles of carbon in the products determined by HPLC) ÷ (moles of carbon in feedstock) × 100%.

After the separation of the liquid products and used catalyst, the catalyst was washed by deionized water for 3 times to remove surface soluble substance residues. Then, dichloromethane (CH₂Cl₂) was used as extractant to extract carbon deposit from the used catalyst at room temperature for 4 h. Organic solution was filtered through 0.45 μm pore-size filters and was analysed by gas chromatography-mass spectrometry (GC-MS) by Agilent 7890 GC with Agilent 5975C inert MSD.

Total Organic Carbon (TOC): Shimadzu TOC-LCSH/CPH, Liquid products need to be diluted, range: 4 μg/L~30000 mg/L. According to the TOC results, the carbon balance was 94.1 % and 94.8 % when Sn-Beta as the catalyst in conventional heating and microwave heating.

3.4 Comparison of heating and cooling processes of two heating methods (Figure S1)

Microwave heating has a faster heating speed and a slower cooling speed. Conventional heating's heating process is slower and cooling process is faster. Above the reaction temperature of 85 °C (efficient reaction temperature of glucose isomerization), the effective reaction time of the two heating processes is basically the same. Further reaction at the end of the reaction time will not affect subsequent comparisons.

4. Sn-Beta catalyst characterization

The phase composition of the samples was determined by X-ray powder diffraction (XRD) by a Rigaku Ultima IV X-ray diffractometer (40 kV, 40 mA) using the Cu Kα radiation (λ=1.5406 Å) in the 2 Theta range from 5° to 70° at a scanning rate of 4° min⁻¹. Ultraviolet and visible spectrophotometer (UV-vis) diffuse reflectance spectra were recorded on a Shimadzu UV-2700 spectrophotometer in the range from 200 to 800 nm, with BaSO₄ as the reference. X-ray photoelectron spectrometry (XPS) was used to probe the Sn state on a K-Alpha spectrometer (Thermo Fisher Scientific). The concentration of Sn was measured by the inductively coupled plasma atomic emission spectrometry (ICP-AES) on Perkin Elmer Optima 3000.

5. H/D exchange experiment and ¹H/¹³C NMR analysis

5.1 H/D exchange experiment

In proton/deuterium exchange experiment procedure, Initial reaction solution include 5 ml deionized water (H₂O), 2.5 ml D₂O and 0.075 g fructose which concentration still remain 10 g/L. Then solution was transferred into a stainless-steel autoclave and a quartz tube. After sealing the autoclave and connecting the inlet and outlet, N₂ was fed from the top of the reactor reaching 4 MPa. The stainless-steel autoclave was heated by conventional way and we set the reaction temperature as 140 °C for 30 min. The quartz tube was heated by microwave and we set the reaction temperature as 140 °C for 30 min as well. After reaction, cooling method is the same as it in catalytic reaction. The liquid solution was collected separately. After diluting with D₂O, the solution was filtered through 0.45 μm pore-size filters and transferred into a NMR tube (5 mm×18 cm) prior to analysis.

5.2 ¹H NMR analysis

The ¹H NMR analysis of the samples were recoed on JNM-EZC500R (JEOL) with at room temperature operating at 500 MHz with water peak suppression. The sample were scanned for 16 times.

5.3 ¹³C NMR analysis

The quantitative ¹³C NMR analysis of the samples were recoed on JNM-EZC500R (JEOL) with at room temperature operating at 126 MHz. The sample were scanned for 1024 times and set the relaxation time to 20 s and turn off noe effect.

6. Density functional theory (DFT) calculations

6.1 Dipole moment (μ)

The dipole moments of the molecules at their optimized geometries were calculated with the Gaussian 09W program package¹ with density functional theory (DFT). The B3LYP hybrid functional and the 6-311+G(d,p) triple-zeta basis set were applied for all the atoms.

6.2 Adsorption energies (E_{ads})

The adsorption configurations were constructed following the procedures outlined in a previous theoretical study.²

6.3 Calculation of transition state

DFT calculations were carried out with the B3LYP hybrid exchange–correlation functional to investigate the ring-opening mechanism of β -Pyranose and β -Furanose. The double-zeta basis sets cc-pVDZ were used. The QST2 method was used to calculate the transition state. Analytic harmonic vibrational frequencies were calculated to verify the nature of the stationary states and to obtain the zero-point energy corrections. The conductor polarized continuum model (C-PCM) was utilized to simulate the solvation environment of water. As the ring opening reaction can be expected to be facilitate by proton-containing species such as water or acidic sites, we studied the effect of a water molecule to promote the ring opening reaction, which should provide the correct trend in the energy barriers. These calculations were performed with the Gaussian 09 program package, and visualized with the AGUI graphical interface from the AMPAC program package.

Results and Discussion

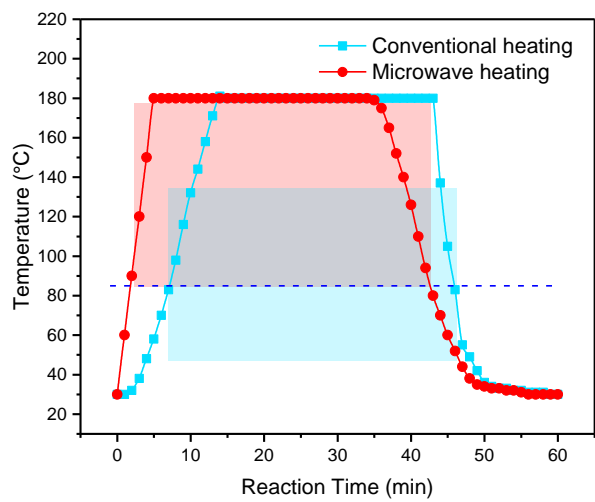


Figure S1. Temperature curve of the whole process of conventional and microwave heating experiment. (Filled with “monolithic” catalyst, 180 °C, 30 min)

From Figure S2 to Figure S4, glucose concentration in solution increases first and then decreases as the mass ratio of SiO₂:SiC decreases. SiC is shown not to catalyze the conversion from glucose to LA under microwave heating (Figure 1B). Under conventional heating, SiC is shown to not affect the equilibria between glucose and fructose (Figure S6). For these reasons, SiC acts as a microwave absorber and enhances the effect of microwave irradiation. The microwave-absorbing performance of the catalyst further influences the conversion efficiency of the liquid products. As the ratio of SiC increases in the monolithic catalyst, the thermal effect becomes the dominant factor, which increases the temperature to the solution and promotes the reaction to move forward. Thus, SiC only acts as a microwave absorber in this system and has no effect on the isomerization reaction.

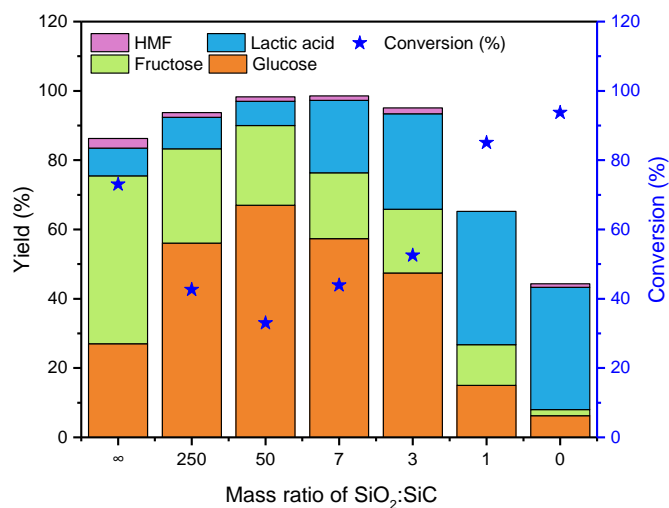


Figure S2. Product distributions over different mass ratio of SiO₂:SiC and conversion rate of glucose under microwave heating. Reaction conditions: 0.5 h, 150.0 mg feedstocks, 15.0 mL deionized water, 4 MPa N₂, 150.0 mg Sn-Beta catalyst, 25 g SiO₂+SiC totally, 140 °C.

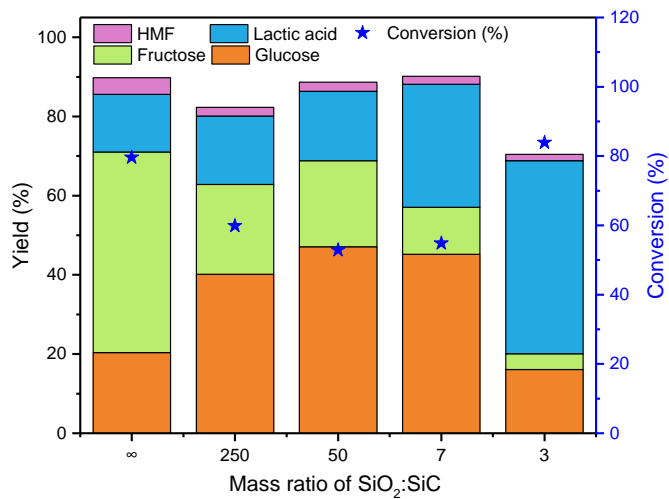


Figure S3. Product distributions over different mass ratio of SiO₂:SiC and conversion rate of glucose under microwave heating. Reaction conditions: 0.5 h, 150.0 mg feedstocks, 15.0 mL deionized water, 4 MPa N₂, 150.0 mg Sn-Beta catalyst, 25 g SiO₂+SiC totally, 160 °C.

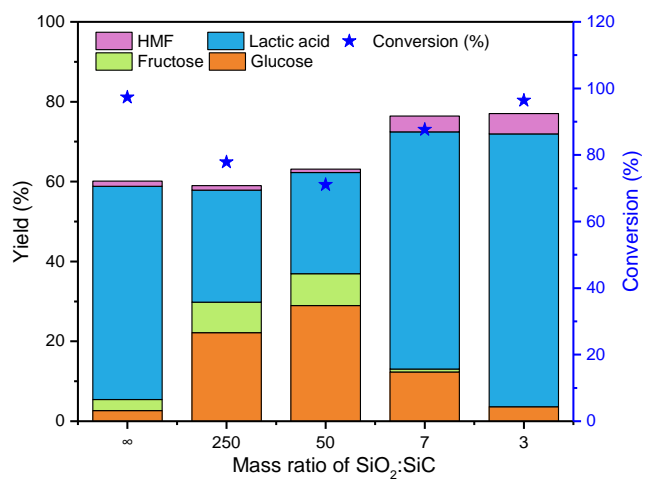


Figure S4. Product distributions over different mass ratio of SiO₂:SiC and conversion rate of glucose under microwave heating. Reaction conditions: 0.5 h, 150.0 mg feedstocks, 15.0 mL deionized water, 4 MPa N₂, 150.0 mg Sn-Beta catalyst, 25 g SiO₂+SiC totally, 180 °C.

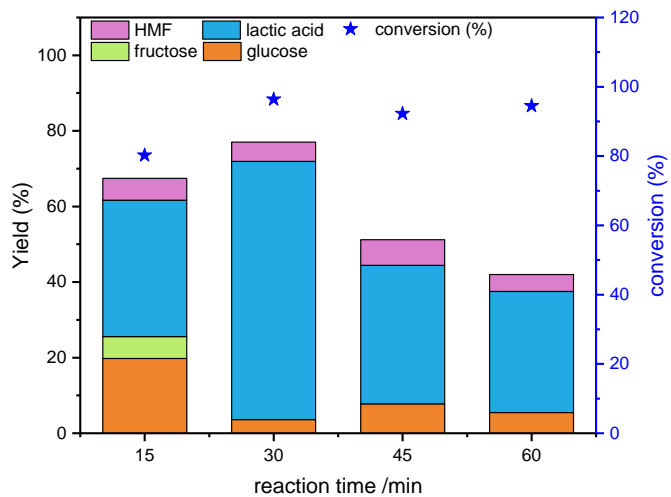


Figure S5. Product distributions over different reaction times conversion rate of glucose under microwave heating. Reaction conditions: 150.0 mg feedstocks, 15.0 mL deionized water, 4 MPa N₂, 150.0 mg Sn-Beta catalyst, 25 g SiO₂+SiC totally (18.75 g SiO₂+6.25 g SiC), 180 °C.

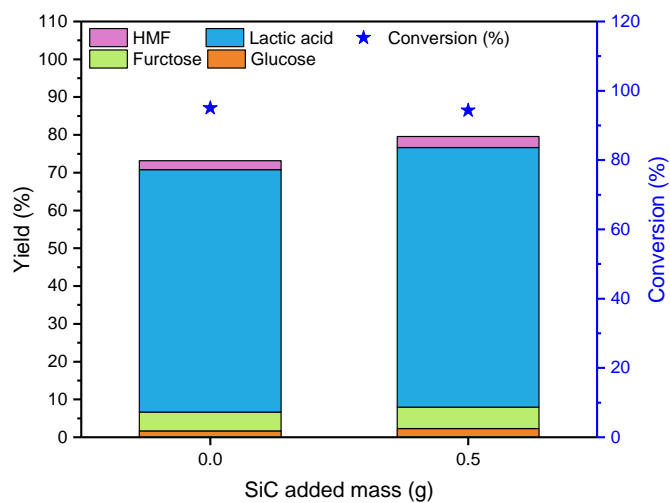


Figure S6. Product distributions over different SiC added mass and conversion rate of fructose under conventional heating. Reaction conditions: 150.0 mg feedstocks, 15.0 mL deionized water, 4 MPa N₂, 150.0 mg Sn-Beta catalyst, 120 °C, 30 min, stirring.

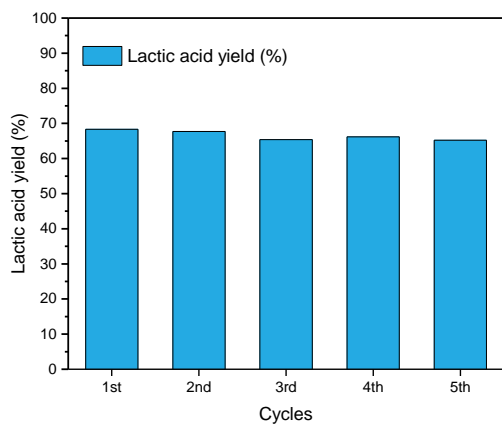


Figure S7. Lactic acid yield in catalyst recycling test under microwave heating. Reaction conditions: 180 °C, 0.5 h, 150.0 mg feedstock, 15.0 mL deionized water, 4 MPa N₂, 150.0 mg Sn-Beta catalyst, mass ratio of SiO₂ and SiC is 3:1.

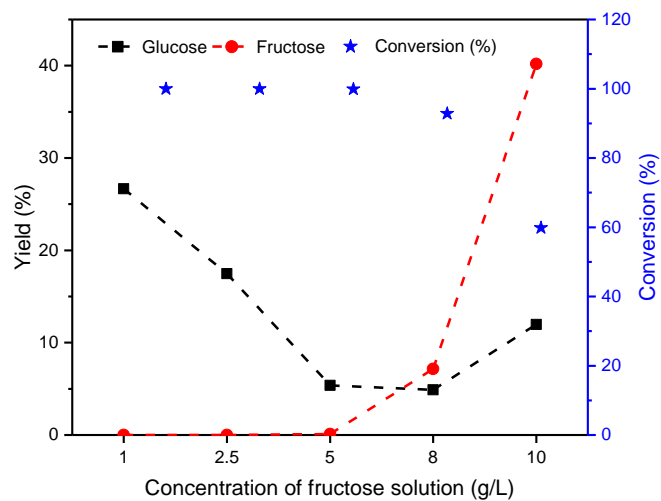


Figure S8. Product distributions over different concentration of fructose solution and conversion rate of fructose under microwave heating. Reaction conditions: 0.5 h, 15.0 mL deionized water, 4 MPa N₂, 150.0 mg Sn-Beta catalyst, 25 g SiO₂+SiC totally (18.75 g SiO₂+6.25 g SiC), 180 °C.

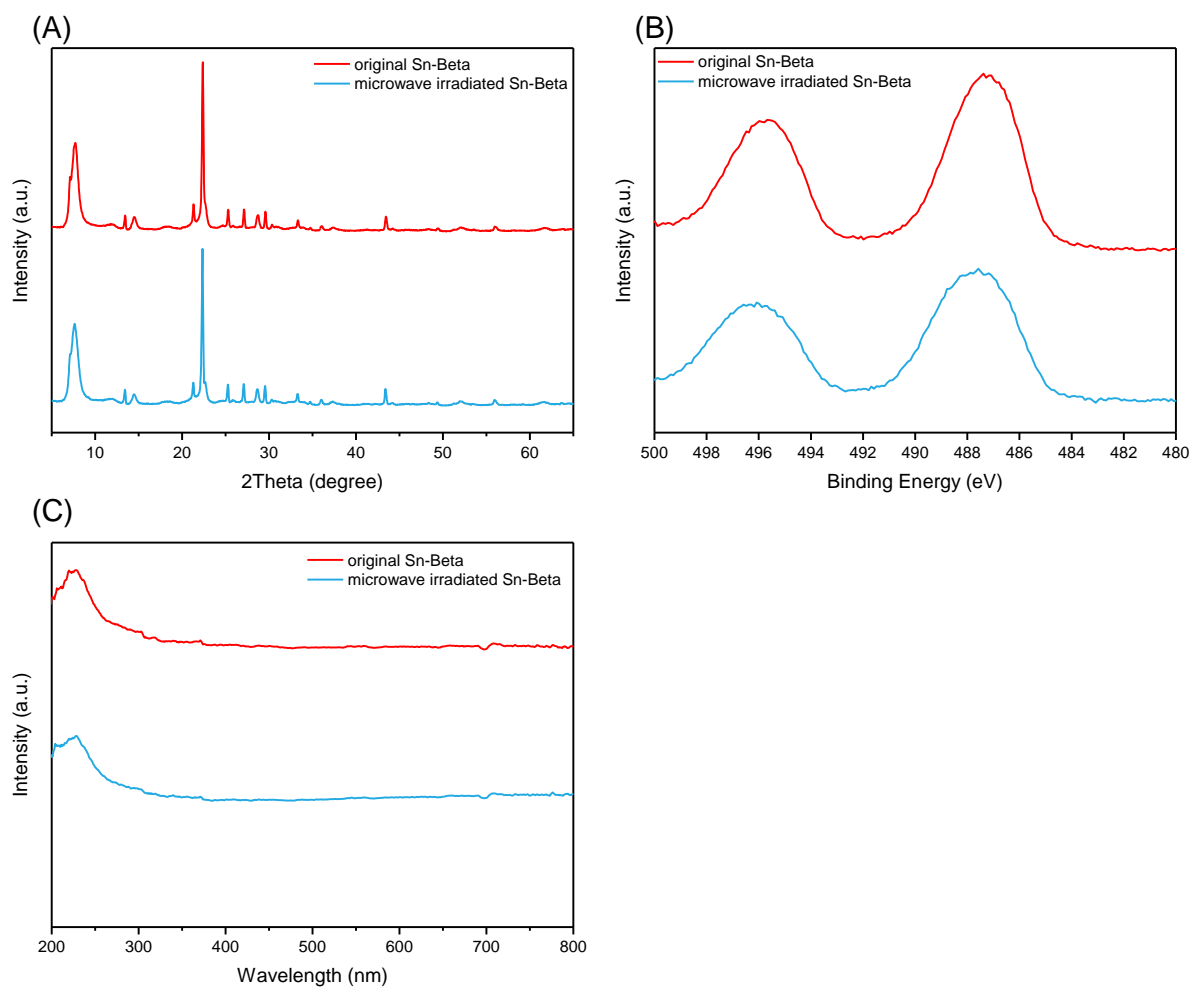


Figure S9. (A) XRD patterns, (B) XPS spectra, (C) UV-vis spectra of Sn-Beta catalyst before and after microwave irradiation.

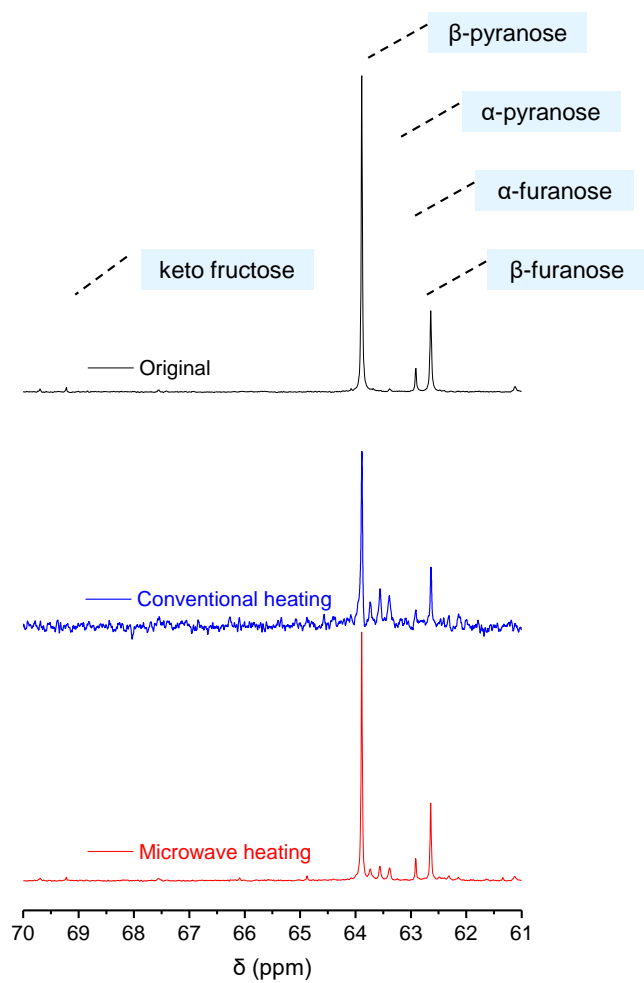


Figure S10. Quantitative ¹³C NMR spectrum (126 MHz) for 1-¹³C labeled D-fructose dissolved in D₂O including the original spectrum and spectrum under conventional heating and microwave heating at 140 °C for 30 min.

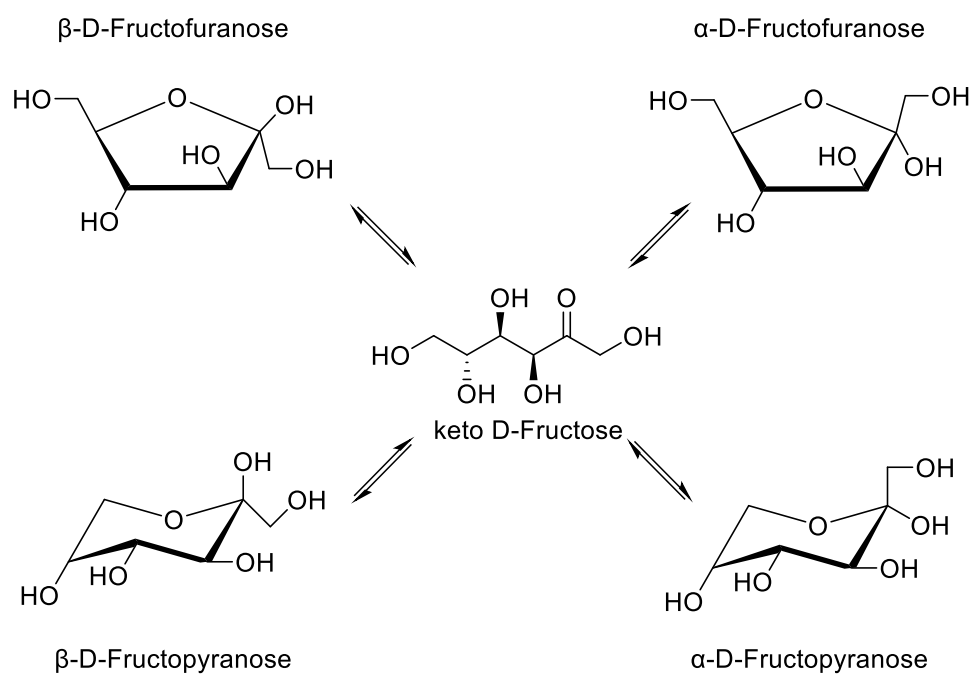
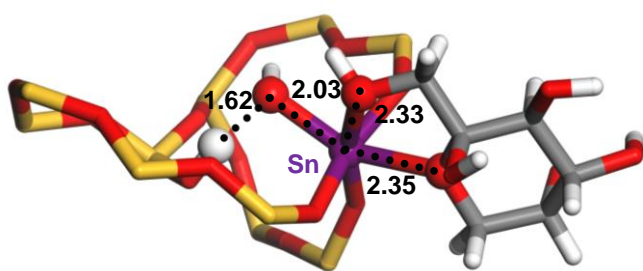


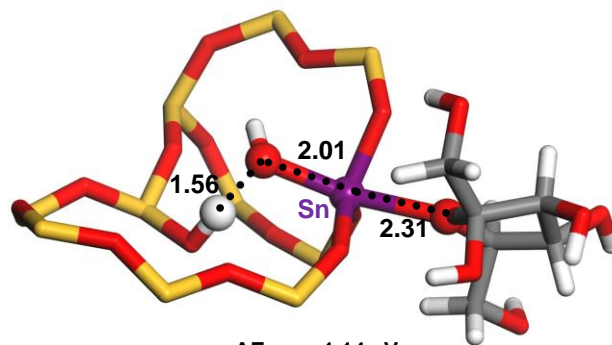
Figure S11. Structures of the fructose five tautomers and their inter-conversion via open-chain form.

(A) β -pyranose-2@Sn



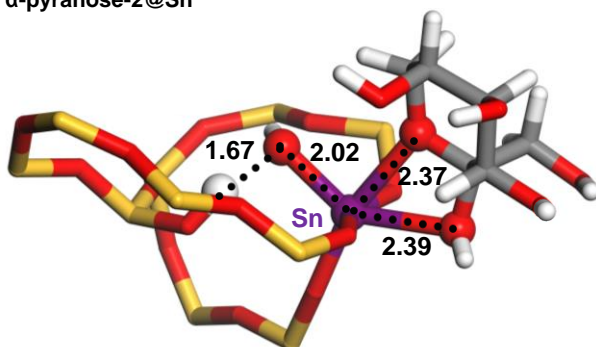
$$\Delta E_{\text{ads}} = -1.19 \text{ eV}$$

(B) β -furanose-2@Sn



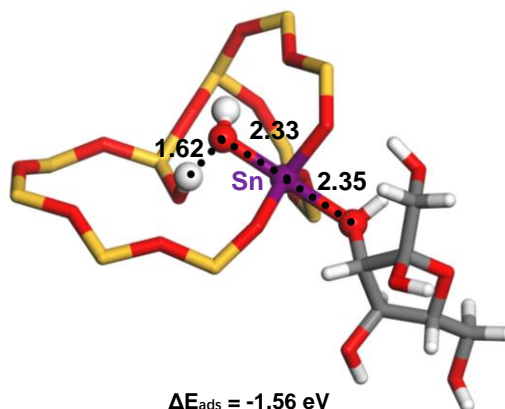
$$\Delta E_{\text{ads}} = -1.14 \text{ eV}$$

(C) α -pyranose-2@Sn



$$\Delta E_{\text{ads}} = -0.97 \text{ eV}$$

(D) α -furanose-3@Sn



$$\Delta E_{\text{ads}} = -1.56 \text{ eV}$$

Figure S12. Adsorption and adsorption energies (E_{ads}) of the four fructose tautomers at the open Sn site on the Sn-Beta catalyst. For clarity, only the relevant part of the periodic zeolite model is shown (bond lengths in Å).

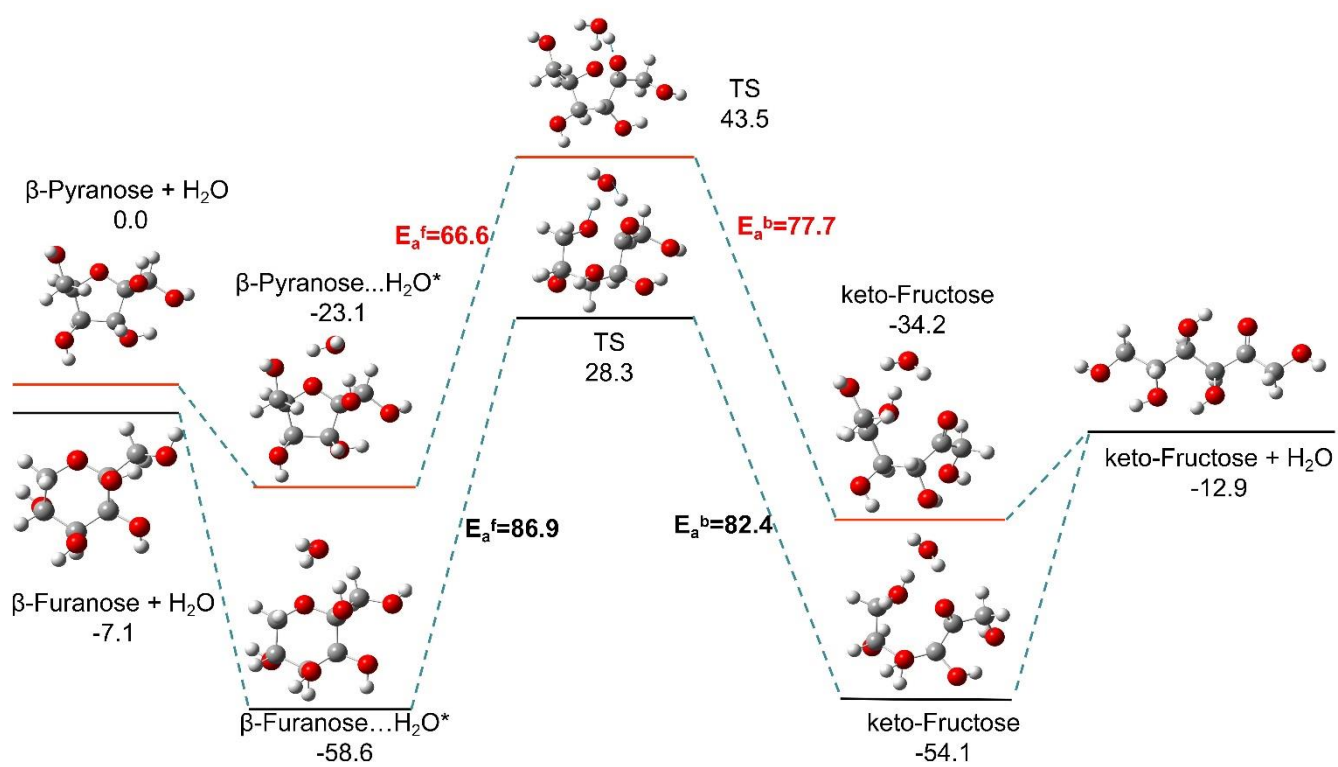


Figure S13. The ring-opening reaction pathway of β -Pyranose and β -Furanose in the aqueous solution as facilitated by an H₂O molecule. The energies are shown in kJ/mol.

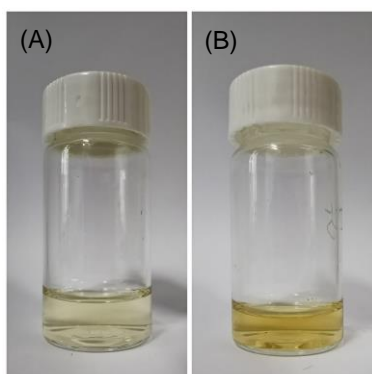


Figure S14. Comparison of solution after centrifugation under microwave heating (A) and conventional heating (B).

We analyzed carbon deposition on the catalyst washed by dichloromethane with GC-MS. After microwave heating experiment, main carbon deposit includes 3,4-furandiol, dodecane, cyclooctane, 2-dodecanone, tridecanal, undecanoic acid, dodecanoic acid, and tridecanoic acid. After conventional heating, main carbon deposit includes 2-cyclopenten, indane, dodecane, benzene, decane, tetradecane, tridecanal, 1-octadecene and 9-nonadecene which indicates that the peak substance of conventional heating has longer carbon chain.

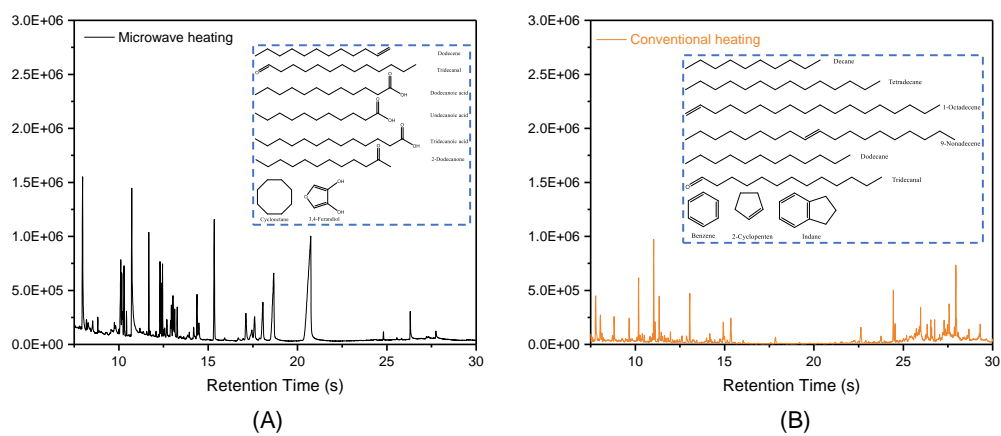


Figure S15. Carbon deposit of the catalyst after reaction and containing carbonaceous matter. (A) microwave heating, (B) onventional heating.

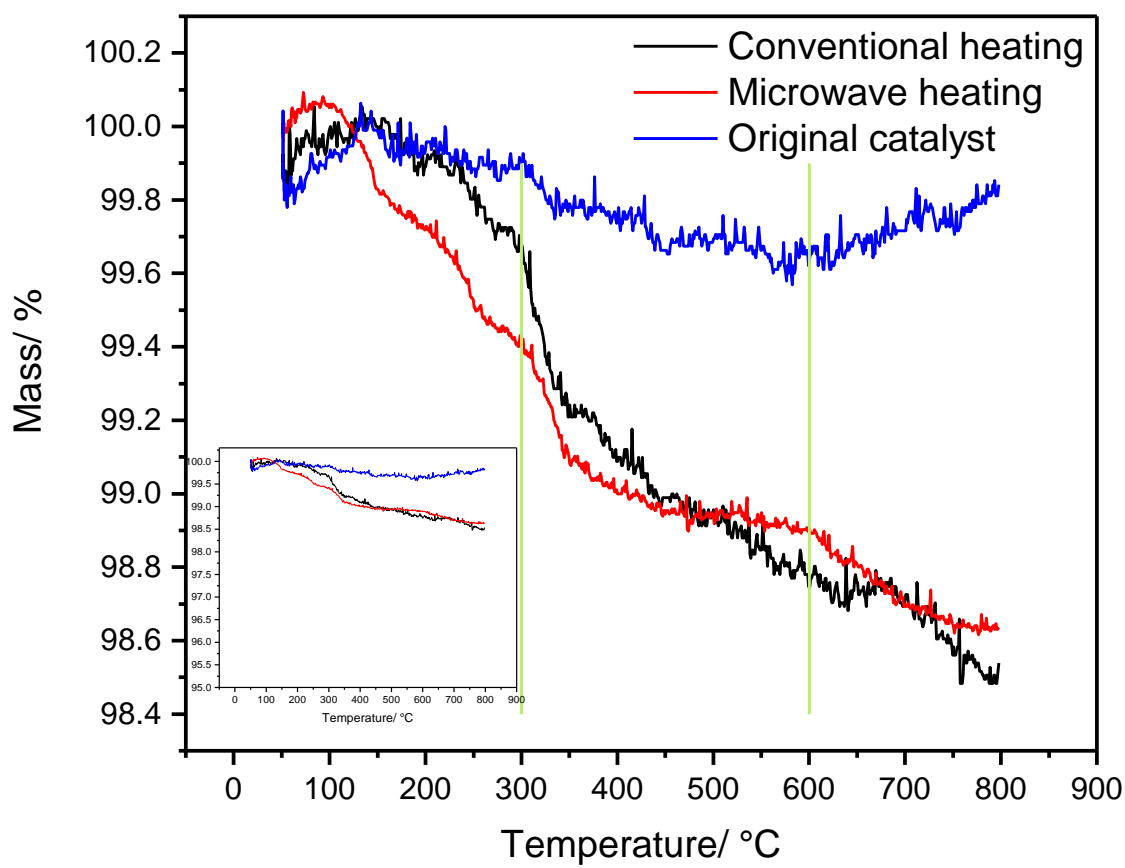


Figure S16. The thermogravimetric curve of the catalyst before and after the reaction. Reaction conditions: 0.5 h, 150.0 mg feedstocks, 15.0 mL deionized water, 4 MPa N₂, “monolithic” catalyst (0.15 g Sn-Beta+ 18.75 g SiC+ 6.25 g SiO₂), 180 °C.

Table S1 Catalyst composition in microwave and conventional heating.

Heating method	Mass ration of SiO ₂ :SiC	Sn-Beta	SiO ₂	SiC
Microwave heating	∞	0.15	25	0
	250	0.15	24.90	0.1
	50	0.15	24.51	0.49
	7	0.15	21.875	3.125
	3	0.15	18.75	6.25
	1	0.15	12.5	12.5
	0	0.15	0	25
	Conventional heating	/	0.15	0
∞		0.15	25	0
3		0.15	18.75	6.25

Table S2 Lactic acid yield through two homogeneity providing method under different conditions.

Reaction number	Heating method	Temperature (°C)	Reaction time (min)	Stirring situation	SiO ₂ supporting	SiC adding	Lactic acid yield (wt%)
1	Conventional	180	30	√	×	×	47.3
2	Conventional	180	30	×	√	√	43.8
3	Conventional	200	60	√	×	×	56.6
4	Microwave	180	30	×	×	×	0.0
5	Microwave	180	30	×	√	×	53.3
6	Microwave	180	30	×	√	√	68.3
7	Microwave	180	60	×	√	√	32.0

Table S3. The reaction of 1,3-DHA to LA under mild conditions. ("monolithic" catalyst (0.15 g Sn-Beta+ 18.75 g SiC+ 6.25 g SiO₂), 80 °C, 30 min)

Heating method	Lactic acid yield (wt%)
Conventional	82.1
Microwave	83.8

Table S4. ICP tests for Sn-Beta catalyst before and after microwave irradiation.

Sn-Beta	#Sn (wt%)
Original catalyst	0.76
After microwave irradiation	0.76

Table S5. ¹H NMR shifts for D-fructose equilibrated in D₂O.

Tautomer	Chemical shift ^[a] (ppm)						
	H-1	H-1'	H-3	H-4	H-5	H-6	H-6'
β-Pyranose	3.529	3.376	3.613	3.718	3.814	3.857	3.521
α-Pyranose	3.517	3.466	3.832	3.770	3.687	3.683	3.518
β-Furanose	3.398	3.377	3.935	3.935	3.670	3.610	3.484
α-Furanose	3.483	3.465	3.926	3.815	3.880	3.639	3.518
keto	4.470	4.360	4.460	3.760	3.590	3.671	3.483

[a] Compared with formerly data, the tiny difference of chemical shift is about 0.2 ppm may be caused by accuracy, test equipment and chemical environment. Assigned on the basis of ref ³

Table S6. Tautomer distributions of fructose equilibrated in D₂O in 20 °C.

five tautomers	α -furanose	α -pyranose	β -furanose	β -pyranose	keto fructose
20 °C	6.1%	1.3%	23.6%	68.6%	0.4%

Table S7 Correspondence between the peak position in GC-MS and the compound name.

Heating Method	Retention Time (s)	Compound name
Microwave heating	7.97	3,4-Furandiol
	10.11/12.30	Dodecane
	12.36	Cyclooctane
	13.03	2-Dodecanone
	15.34	Tridecanal
	18.06	Undecanoic acid
	18.67	Dodecanoic acid
	20.74	Tridecanoic acid
Conventional heating	4.61	2-Cyclopenten
	7.78	Indane
	10.18	Dodecane
	11.03	Benzene
	11.34	Decane
	13.05	Tetradecane
	15.34	Tridecanal
	24.44	1-Octadecene
	27.95	9-Nonadecene

Coordinates of the adsorption structures at the open Sn site

α -furanose@Sn

CONTCAR

O Si Sn H C

1.0000000000000000
12.6569995879999997 0.0000000000000000 0.0000000000000000
0.0000000000000000 12.6569995879999997 0.0000000000000000
0.0000000000000000 0.0000000000000000 26.3959999084000003

135 63 1 14 6

Cartesian

4.3612224860000000 8.3355201119999993 1.8300346569999999
4.3028736920000004 10.4597442310000002 0.2161832510000000
3.5254804810000002 10.7118715560000002 2.6963514069999999
6.0713095839999998 10.3529196849999998 2.1560252680000001
4.5463942619999997 6.5267082550000000 26.2819685169999993
3.0866625530000000 6.0378949920000000 2.0522889240000000
5.7507076950000000 6.0623229810000003 2.1628883050000001
9.1005092160000007 8.4750003080000003 1.7957198670000001
10.9303315580000007 10.4297471440000002 2.0462178590000000
8.5177809740000008 10.7864214319999991 2.9587276039999999
10.7693346650000006 6.4222880320000000 1.6199225209999999
8.3626059089999991 6.0880168799999996 2.6813057080000000
12.5902971459999993 8.4042474069999997 1.6418311590000001
0.8666247770000000 10.7390840940000007 2.4141780719999999
0.4942558550000000 6.0478940220000004 2.6469909170000001
9.0667151530000005 4.0608717619999997 14.7136586739999995
8.7132048849999997 1.9460137170000000 13.1576142950000001
9.6719725200000006 1.6590795260000000 15.6103307470000008
7.1115880919999999 2.2456049330000001 15.2376181109999997
9.0657027269999997 6.1187732879999999 12.9638672869999994
9.4785742150000001 6.5675908099999996 15.4693750590000008
6.2981228580000002 8.0179562559999997 15.7370305449999996
3.4906739910000000 4.0852997510000000 14.6914858160000001
2.0761276500000001 1.9142446950000001 14.8535570880000005
4.5306993919999998 1.8685529260000000 15.8333761989999999
1.8758939590000001 6.2040815130000002 14.6569072970000001
4.0316339939999999 6.1893994470000004 16.1414173440000006
0.3561679570000000 4.0460629539999999 14.8905113270000005
12.3486750640000000 1.6905954420000000 15.8333761989999999
12.1721100430000000 6.4264652330000001 15.8331118800000006
4.2895839000000002 3.8401337999999998 8.4095012249999996
2.4533062100000000 4.2702184200000000 6.5272029009999999
1.8918417470000000 2.7418857810000001 8.6293803610000008
2.1318184470000001 5.3930209810000003 8.8561215509999993
6.2524312780000004 4.2050349940000000 6.6177414150000002
6.7150444279999997 2.8620006849999999 8.8357973489999999
6.2887567840000003 5.5059212160000000 8.9068022570000007
4.3748917489999997 8.9034399240000006 8.4567505100000009
2.2285179770000001 10.4415182959999999 8.2123235829999999
2.0281575450000000 8.0316255190000003 9.3003669450000004
6.5472125260000000 10.4370883659999993 8.2197142729999992
6.6885915870000003 8.0790895989999996 9.3964482809999996
4.3976743569999996 11.9678262709999998 8.0623944400000003
2.2601604460000000 0.1771980000000000 9.3484076129999991
6.5888540239999998 0.2161815490000000 9.2129955330000008
8.7831980900000008 8.3804523730000007 22.1586508050000006
10.1347124120000007 8.3413426949999998 19.8273556480000011
10.8798301990000006 9.9654886119999997 21.8318682230000007
11.1958754159999998 7.3180242130000002 21.9783651589999991
7.2995447940000000 9.5723624530000002 20.4191536790000008
6.4278571309999997 9.5603378170000006 22.8555044129999985
6.4732956039999996 7.2162617979999997 21.7410653899999993
8.5242357569999996 3.8411462260000002 21.6035426950000016

10.6358030390000007 2.2162406120000000 21.5906083970000005
10.8212286760000005 4.7146056349999999 22.5081333090000015
6.5041791309999999 2.1378937589999998 21.8514010429999992
6.1891463399999997 4.6622057879999996 22.4698590520000003
8.5906854690000003 0.4948886680000000 21.5499584199999994
10.9296986030000003 12.4957492109999997 22.6316660059999997
6.3058439279999998 12.2305855789999995 22.4608848109999997
8.4039946770000000 8.6646023910000007 25.0429410980000000
8.9428030849999995 10.6711164959999998 0.3141124060000000
9.9462502510000004 10.6385875890000001 24.2523803019999988
7.3553625220000001 11.1338563879999999 24.6887071549999995
8.5953681290000006 6.4791181870000001 0.0805077980000000
10.0057382130000008 6.6185983820000001 24.2581874410000005
7.3463759189999998 6.3996321660000000 24.1396705030000014
3.8645617890000001 8.6129618640000007 24.7678941349999988
2.2051024140000002 10.6480804050000000 24.9727283590000013
4.6919497689999998 11.0710776640000006 24.1193447280000015
2.3552144049999999 6.4165921920000004 24.7842598529999982
4.7280221679999999 6.4225415159999999 23.6357709490000012
0.6527214470000000 8.4563949009999995 24.8003612529999984
12.5519464109999994 10.7568045699999999 23.7366021499999995
12.5905506299999992 6.0938390849999999 23.8215978429999993
4.5656330000000001 4.1997190020000001 11.7372455290000008
4.2335130660000004 2.0079063800000001 13.2418170330000002
3.0599562279999999 2.1843450359999999 10.9165933339999999
5.7069146030000004 1.8833615459999999 11.0884318030000006
4.2351584469999999 6.2709103199999996 13.4284368829999998
3.3306895239999998 6.4284900860000000 10.9651626390000008
5.9268932449999996 6.4453241239999999 11.3840664999999994
8.8100311569999992 3.9916378770000001 11.4379143069999998
10.7337684790000001 2.1604232600000000 11.4146865349999995
8.3018527910000000 1.5771887110000000 10.5702779319999998
10.8105966920000007 5.7477967809999999 11.0174261090000005
8.3665296260000002 6.3583701399999999 10.3744195220000002
0.0739168810000000 3.9902456019999999 11.5405949509999992
0.4976732180000000 1.5759229889999999 10.6199029370000009
0.6787949110000000 6.4539305010000003 10.8308070460000003
8.4793034960000000 3.9358205260000001 18.1931784169999986
10.5246745500000003 4.2647760630000002 19.9155184429999998
10.8414794640000007 2.8909853459999999 17.6723860809999991
10.5678354419999998 5.5483224099999999 17.6911275189999984
6.4691191579999998 3.9965740209999998 19.9194769270000016
6.0270099019999996 3.2848712020000002 17.4482833560000010
6.6108776889999996 5.8285483339999997 17.9548229480000003
8.2797031380000004 9.0011518790000000 18.0139500440000013
10.4300006280000002 10.5426477559999991 18.3969553670000003
10.6503587409999998 8.1480703779999999 17.2112479050000005
6.4598798249999998 10.9167890369999991 18.2813412120000010
5.7327348660000004 8.3956410290000001 18.7551493670000013
8.5901792560000008 12.5022047480000005 18.4059311819999998
10.9958948319999994 0.2252945870000000 17.4078976969999992
6.3563452869999999 0.6551262890000000 17.2521622010000009
4.4127362710000000 8.5128448300000006 4.9236457050000002
2.4712792270000001 8.2184430529999997 6.7249091790000000
2.0182850690000000 9.6472918009999997 4.5672999670000003
2.2829430529999999 7.0083070369999998 4.3978376109999999
6.3139440919999998 8.2093297080000003 6.7769091169999998
6.7298536139999996 9.7556357410000007 4.6713002369999996
6.6280911990000000 7.1004498939999996 4.4334722240000000
4.3961557170000001 3.6920468500000001 4.7924576070000002
2.2852212010000001 2.0689131700000001 5.0532502519999998
2.0394222950000001 4.4176724150000002 3.9113590829999998
6.4622841490000003 2.0467633279999999 5.0321334880000004
6.8061748590000004 4.4777933320000001 4.0417554050000000

4.3556533870000003 0.4021128560000000 5.1292705239999998
2.0053749370000000 12.2972880210000000 4.1280703310000000
6.6011313899999999 12.3041222749999992 3.9388112300000002
12.5851075189999992 10.4705029570000008 26.3622127709999994
0.2456723530000000 6.3555855899999996 0.0197970000000000
12.6466210879999998 1.9708213660000000 13.2272999710000008
12.2764035239999991 5.9982787240000004 13.2270356519999996
2.2444657650000002 12.6535820840000000 6.7146141320000003
6.5174689219999999 12.5470102669999992 6.5831625020000004
10.6908610710000005 0.0269594080000000 20.0126554789999993
6.4820294780000003 0.3595853670000000 19.9141984239999985
7.0252678169999996 5.7312158499999999 14.6629771810000005
0.5684258360000000 8.5909381990000000 18.7767951619999991
3.7164748390000000 8.9924187599999996 17.0354509530000016
3.5874998850000002 6.6472028180000002 18.7831293650000006
1.4801095209999999 8.1775604980000001 20.9161903930000008
1.1734304730000000 5.6231253939999997 18.3000826500000002
1.6707239370000000 10.5809984920000009 15.8734991129999994
4.5622154960000003 9.9468832060000008 1.7228668930000000
4.4419740389999998 6.7418774949999998 1.4926937910000000
9.3674457259999997 10.0801613480000007 1.7698518599999999
9.2092326270000004 6.8718648750000000 1.5402066089999999
12.4031001409999995 10.0096619300000000 1.5172420740000001
12.3371573960000003 6.8099718349999998 1.4750084470000000
6.9675519780000004 10.8016100890000004 3.4444141600000000
8.6196701309999995 2.4893786090000001 14.6885814589999999
8.6182774789999996 5.6164171270000001 14.4496989259999999
3.5949674720000000 2.4789999200000001 14.6598100799999997
3.4458680959999999 5.7022315660000000 14.7389986329999996
0.5429852790000000 2.4369787619999999 14.6827743200000000
0.3490800540000000 5.6560333949999997 14.6384301770000000
6.0321995289999997 2.0234745080000001 16.4407485659999999
2.6959409060000001 4.0675800290000002 8.1191458169999997
5.8879095550000002 4.1071962969999998 8.1983335840000002
2.7788442419999999 8.9090090219999993 8.1674500170000002
5.9781539239999999 8.9134389530000000 8.2078364619999995
2.7812491320000001 11.9669398319999996 8.0850951480000006
6.0143530649999999 11.9583334550000000 8.0154094730000001
2.0539778080000000 6.5605023180000002 9.9842870410000000
10.2372345239999998 8.5253749249999995 21.4335513089999985
7.2191730889999999 8.6691590640000005 21.7656139680000003
10.1237009560000004 3.7501425369999999 21.4050442479999994
6.9194549429999999 3.6577461960000002 21.4351356459999991
10.2016683369999992 0.6568982710000000 21.4351356459999991
6.9746397160000004 0.6365205050000000 21.4427898689999985
11.1147440139999993 6.1714262409999998 23.1556270170000005
8.6575146529999998 10.2678645660000001 25.1659467309999982
8.5894195589999995 7.0500752770000004 24.9508182460000008
3.7581163370000001 10.1900239270000004 25.1126267739999989
3.8715231619999999 6.9969161110000000 24.8750626859999997
0.6834779949999999 10.0742120229999994 24.9761597789999996
0.8028334380000000 6.8443988530000004 24.9703526400000015
6.2054737879999999 11.0229806289999992 23.5307137990000008
4.3980542050000002 2.5836732489999998 11.7332862589999998
4.5139924730000001 5.8203214279999997 11.8919261110000001
9.1522764849999998 2.4187526380000000 11.6617527140000004
9.2579626180000005 5.5555368899999999 11.4587671459999996
12.3029831069999993 2.4250810559999998 11.7042505610000003
12.2865292949999994 5.5522461280000002 11.6546255559999992
6.8144017650000004 1.6500931120000000 9.9222563739999998
10.0775027860000002 4.1533944670000000 18.3541939889999988
6.8866733059999996 4.3104676430000000 18.3710883440000003
9.8837242560000007 9.0095055270000000 18.3613211470000017
6.9186959999999997 9.4570567630000006 18.8356579400000008

10.1576217609999997 12.1364171150000004 18.5761853129999999
6.9670457649999999 12.4473994460000004 18.4666410429999992
10.6931394070000003 6.6668214050000003 16.5257442589999997
2.8052974609999999 8.3434942890000006 5.1437883729999996
6.0167577659999996 8.3891862459999995 5.1923572849999999
2.8002345750000002 3.6049665009999998 5.0828138010000004
5.9822043830000000 3.5985117180000001 5.1295348430000001
2.7406200599999999 0.5299485940000001 5.2620425669999999
5.9773946039999997 0.4999515070000000 5.1730879959999996
1.9903132109999999 5.8955038829999999 3.2511953960000000
2.0973914290000000 10.8319866480000009 3.4520687759999999
6.8795855680000004 5.9370186389999997 3.3295913869999998
10.9395716449999991 1.6484475420000000 16.6255197589999995
1.9353817330000000 1.6769258020000000 9.8697285860000008
6.8021244000000003 6.5837911389999997 10.0146427580000008
11.0644961389999992 10.9570378840000000 23.1244799169999986
6.1973732459999997 6.1885133850000003 22.9993628840000000
5.3056875249999997 7.1660131680000001 17.2730150400000007
7.1477872329999999 8.3874141229999992 16.0511431480000013
6.6964390219999999 6.6508738059999999 14.9134755670000008
1.8026098040000000 10.2996337770000004 18.6160423349999995
2.0614455829999998 7.7454506480000003 16.9340895409999987
3.4362489150000002 8.5272737900000006 19.5626029459999984
0.1902347080000000 9.1998665529999997 16.2356515970000004
3.4854843639999999 9.4425010609999998 16.1923615810000001
2.9568017270000002 6.0080246470000001 18.3404683079999984
0.6204461170000000 7.9987171400000001 21.3519886089999993
12.4151240220000005 6.3228043310000004 19.6922071000000010
1.3121511600000000 5.7048893730000003 20.3304638209999986
0.5845002240000000 5.9470176680000000 17.5873903879999993
12.5790322069999991 10.7708533039999992 17.0346579970000001
1.7185674879999999 11.5445755279999993 16.0057417310000005
1.4073317679999999 9.4750299689999995 17.9920415049999995
2.5050732899999999 8.4985426119999996 17.6098275639999997
2.8156761499999998 7.8615152810000000 18.9494250129999990
1.4132806200000001 7.7195040199999996 19.5876801600000015
0.6827185340000000 10.0258622590000002 16.7683225299999989
0.8465001660000000 6.2939460340000002 19.5277601079999990

α -pyranose@Sn

CONTCAR

O Si Sn H C

1.0000000000000000
12.6569995879999997 0.0000000000000000 0.0000000000000000
0.0000000000000000 12.6569995879999997 0.0000000000000000
0.0000000000000000 0.0000000000000000 26.3959999084000003

135 63 1 14 6

Cartesian

4.2641431079999998 8.3193190290000008 1.7310497520000001
4.2502203610000002 10.4345572999999998 0.1010966810000000
3.3489154600000002 10.6827609070000005 2.5361276109999999
5.9334747700000001 10.3562104480000006 2.0987460410000001
4.4450116949999998 6.5077226230000003 26.1924872770000015
3.0074296390000002 6.0199221639999996 1.9841873889999999
5.6724875849999998 6.0521975880000003 2.0623194549999999
8.9916590630000002 8.4419659419999995 1.6729785530000001
10.7876873419999999 10.4245582710000004 1.8659331960000001
8.4066524850000004 10.7499695620000004 2.8468085969999999
10.6837733329999995 6.4052012649999996 1.5035161969999999
8.2904611100000007 6.0472614440000001 2.5746657940000000
12.4798016119999993 8.4037411930000001 1.5388867860000000
0.6761369149999999 10.7293385479999994 2.4358228830000002
0.4122384860000000 6.0583992640000002 2.5596200950000001
9.0913958709999996 4.0573278930000001 14.6402772599999995

8.7411771199999997 1.9505702009999999 13.0657557620000002
9.5978028680000005 1.6499665590000001 15.5696807699999997
7.0728578850000003 2.2871198769999999 15.0847853989999994
9.1192413650000006 6.1556050070000001 12.9250651790000006
9.4440204550000004 6.5472125260000000 15.4677922950000006
6.0724487519999997 7.9647963349999999 15.3967866010000005
3.3092991910000000 4.0075858530000001 14.3216775359999993
2.0271451180000000 1.8303287440000000 14.7558914150000007
4.4899439560000003 1.9798079689999999 15.7238335019999997
1.8657683770000000 6.1997779470000003 14.6310386999999995
4.1217519989999998 5.8046265589999999 15.9875289309999999
0.3627496000000000 4.0173317759999998 14.8456385470000001
12.2785551179999999 1.6645220720000000 15.7048277449999993
12.1416067420000005 6.4057074780000001 15.7555076639999996
4.2314882130000004 3.9472118300000001 8.3738670049999993
2.4345738730000002 4.2683199319999998 6.4279540700000002
1.8804504430000000 2.7187235140000001 8.5090147670000000
1.9794281199999999 5.3837812710000001 8.7310045180000007
6.1456059769999998 4.2061741630000000 6.5258828820000003
6.6123963290000001 2.8165622120000000 8.7185988569999999
6.3563452869999999 5.4709879839999997 8.8273501719999992
4.3727401549999998 8.8953390050000003 8.3720191360000005
2.2323149529999999 10.4340510870000003 8.1645464469999993
2.0553700830000001 8.0132728419999992 9.2502140900000001
6.5502505590000002 10.4077242329999997 8.0866786990000001
6.6908699230000002 8.0590915410000008 9.2866404780000007
4.4072939150000003 11.9611180039999994 8.0048508940000005
2.2839556679999999 0.1807419510000000 9.2916562359999997
6.6579615440000000 0.1732743290000000 9.0965892089999993
8.6151134579999997 8.4188031080000005 22.0253509130000005
9.9878917489999992 8.3708335690000002 19.7222984980000007
10.8155328359999992 9.8633467259999996 21.7856738509999985
10.9479252930000008 7.1814553080000003 21.8231567270000006
7.1085508129999999 9.4466782620000007 20.1829096109999995
6.2417992939999998 9.5786904939999999 22.6213717450000011
6.3221713760000000 7.1823409930000004 21.6233398339999994
8.4408267729999995 3.8592457969999998 21.4681314010000008
10.4917669260000004 2.1478927880000001 21.5549741769999983
10.7237694500000007 4.6218298229999997 22.5057575900000018
6.4200096960000002 2.1458677470000000 21.6309940559999987
6.0753596659999998 4.6334742330000003 22.3500205210000011
8.4625962010000002 0.4264143390000000 21.4145471259999987
10.7609810170000006 12.4076568129999991 22.5617175850000002
6.1433280180000001 12.2583043299999996 22.3033006590000014
8.2165441880000003 8.6166320980000002 24.9262712419999986
8.7276338449999997 10.6302339410000002 0.1961222850000000
9.8827118289999998 10.5178402959999993 24.2101475599999993
7.2834704529999996 11.1044922560000003 24.4577415890000012
8.4827210009999998 6.4391220699999998 26.3759384519999998
9.8920779040000006 6.6026500290000003 24.1753047230000000
7.2438538069999998 6.3393845080000002 24.0237920289999991
3.7929232030000000 8.5999248020000003 24.6509599610000016
2.1381468660000000 10.6409926670000008 24.8597526679999987
4.6028445680000001 11.0691787989999995 24.0053149099999992
2.2534521789999999 6.4235539419999999 24.6807886140000008
4.6229689909999996 6.4117827900000002 23.5381052759999996
0.5609582020000000 8.4651280199999999 24.7478342520000005
12.4653726519999992 10.7609810170000006 23.6695565129999999
12.4687901560000007 6.1278862549999999 23.7218207690000007
4.6897981750000000 4.1268148839999999 11.6884126930000001
4.2022504449999998 1.8779189999999999 13.1198678879999999
3.0280606520000002 2.2586416180000000 10.8162891969999997
5.6532488460000003 1.7640059619999999 10.9617312190000007
4.1821256450000002 6.2430652039999996 13.2898584880000001

3.345624696999999 6.2536968110000002 10.7909484500000001
5.9148689860000001 6.4382356310000004 11.2837623619999992
8.8068671359999993 4.0340390719999997 11.3948893970000000
10.7176941380000006 2.1896608400000002 11.2800666239999998
8.2705897929999992 1.6414863570000000 10.4720851950000000
10.8226205740000001 5.7748825799999997 10.9517004900000003
8.3765286549999995 6.4026694449999999 10.3372017520000004
0.0759419980000000 3.9977131890000002 11.4099350959999999
0.4842568260000000 1.5737713010000001 10.5169579750000004
0.6962615270000000 6.4844338019999999 10.8046749169999998
8.4967704889999993 3.9110126890000001 18.1717985149999990
10.5380910839999995 4.1961751329999997 19.8812026690000003
10.8494536410000002 2.9017436950000000 17.5789447840000008
10.5679614290000004 5.5549039349999996 17.6821517039999989
6.3896331369999997 4.1287133720000000 19.7914571099999996
6.0587791119999999 3.3051223670000001 17.3416434409999987
6.7031472880000003 5.8594314839999999 17.7874731729999986
8.2332514840000002 9.0033034740000009 17.8104374129999989
10.3883591299999996 10.5364457020000000 18.2831898680000009
10.6861784110000002 8.1378178650000006 17.1711265650000016
6.4205159089999997 10.9265345830000005 18.0707014219999991
5.6143918970000000 8.4514580030000008 18.3130169480000013
8.5409430529999995 12.5006853549999999 18.2887326889999997
10.9683028230000001 0.2401032770000000 17.3490349180000010
6.3249559250000003 0.6823388270000000 17.0848108530000005
4.3466667840000000 8.4768991729999996 4.8249247249999998
2.4411555859999998 8.2122409990000005 6.6634063630000000
1.9553797909999999 9.6247619229999994 4.5026296559999999
2.1986474430000000 6.9865368559999999 4.3347512439999996
6.2678726640000004 8.1692076040000003 6.6700048850000000
6.6347994650000004 9.7725957660000002 4.6013506360000003
6.5825259830000000 7.1198157520000001 4.3030759009999997
4.3254031929999996 3.6669859059999999 4.6573102380000000
2.2214300499999999 2.0491682180000002 4.9827728020000004
1.9446214420000001 4.3990666310000002 3.8279477270000002
6.4092517239999998 2.0508135990000000 4.9500417580000002
6.7298536139999996 4.4823500039999997 3.9583440500000000
4.3065439259999998 0.3997080610000000 5.0374127780000002
1.9441152289999999 12.2729860189999993 4.0758064679999997
6.5408844850000003 12.3170325950000006 3.8326991659999998
12.5718177270000009 10.5073350540000003 26.3078371140000016
0.1675786770000000 6.3431822379999998 26.3226184950000004
12.6100424750000002 1.9962619690000001 13.116699999999998
12.2846304300000000 5.9490428980000001 13.1708121249999994
2.2372512850000001 12.6356096319999995 6.6594470929999998
6.4859531959999996 12.5354925979999994 6.4736190179999999
10.6107420950000009 12.6337107670000002 19.9432341219999998
6.3848237350000003 0.3273100140000000 19.7413042549999993
7.0337474520000001 5.6804613840000000 14.5317902629999995
1.3093666110000000 8.0235253550000003 20.6297934689999991
1.6354108570000001 4.5447488800000002 19.2780546780000002
2.6815119460000001 6.3157162150000001 21.3055314920000001
3.8911413719999999 6.2639489460000002 18.6994536909999987
2.5017825280000001 10.1583814579999991 18.7118609249999999
3.3268921720000000 8.3619737080000007 16.9554710170000007
4.4458977570000000 9.9322007620000008 1.6222981420000000
4.3531219449999998 6.7249167150000000 1.4074347629999999
9.2265728780000007 10.0511766859999998 1.6357600940000001
9.1197475780000001 6.8392099799999997 1.4290794760000001
12.2923511229999995 10.0114332990000001 1.4364703630000000
12.2517228050000000 6.8042767480000004 1.3768153169999999
6.8670554729999997 10.8000914500000000 3.3583631600000001
8.6087846629999998 2.4959603220000002 14.5932930790000004
8.6401744019999995 5.6140120490000003 14.3881961100000009

3.5251010090000001 2.4196387000000001 14.4974744890000000
3.3984043920000002 5.6036335490000004 14.5734959409999991
0.5113427630000000 2.4102724370000002 14.5869573030000002
0.3423718350000000 5.6295801770000002 14.5972515630000004
6.0068854790000001 2.0714446130000002 16.2995301320000010
2.6386047270000001 4.0820089880000001 8.0259680519999996
5.8360159210000004 4.1125122889999997 8.1188814990000004
2.7746674179999999 8.8983770379999996 8.1041001179999999
5.9705599730000003 8.8887574800000007 8.1025157799999992
2.7897293329999999 11.9585861839999996 8.0296630029999996
6.0234660330000001 11.9346644079999997 7.9132566789999998
2.0315750490000002 6.5226577949999998 9.8921649760000001
10.0964884179999999 8.4710765899999991 21.3358872089999991
7.0595680930000002 8.6471353979999996 21.5871769769999986
10.0499107760000008 3.7006536040000002 21.3506685900000015
6.8389564959999998 3.6787570580000000 21.2875814360000000
10.0764903599999993 0.5913350440000000 21.3572671119999988
6.8571824310000000 0.6232306670000000 21.2712172909999992
10.9879214100000002 6.1249753409999999 23.0666728399999990
8.5218314329999991 10.2119200960000001 25.0387182959999990
8.4675330990000006 7.0094462049999997 24.8523611910000000
3.6867308580000002 10.1788857299999993 25.0038754579999996
3.7714061280000002 6.9846387449999998 24.7913870120000013
0.6127253300000000 10.0810470320000007 24.9025140470000004
0.6981601090000000 6.8493349959999996 24.8708383110000000
6.0852323310000003 11.0251329770000002 23.3491097060000001
4.3967886719999996 2.5262105170000000 11.6393163249999994
4.5269024160000004 5.7479231459999998 11.7778955070000002
9.1434166240000003 2.4531796560000001 11.5669913980000008
9.2749226430000000 5.5933814130000004 11.4112543290000001
12.2875417210000002 2.4397633110000001 11.5881077690000005
12.2964015819999997 5.5541014800000000 11.5896913189999999
6.7889613500000001 1.6185771959999999 9.8106014889999997
10.1014245620000001 4.1398515690000002 18.3138083300000005
6.9188219880000004 4.3375538169999999 18.2494027310000000
9.8137310509999995 9.0129230319999998 18.2354127320000003
6.8364254300000002 9.4370587050000001 18.5759209950000006
10.1071204019999996 12.1299623319999998 18.4774639399999998
6.9165436509999996 12.4546139260000004 18.2950668920000012
10.6992147190000004 6.6440387980000004 16.4864142999999999
2.7420123350000001 8.3199519839999994 5.0738391660000000
5.9527135089999996 8.3789337330000002 5.0933719860000002
2.7351777030000002 3.5868669299999998 4.9838288950000003
5.9039838959999997 3.5948411070000001 5.0358288330000001
2.6926501439999999 0.5136210530000000 5.1947326110000001
5.9277793069999998 0.5026094560000000 5.0791184549999997
1.9020938830000000 5.8834796239999996 3.1772865250000000
1.9768966770000000 10.8109761629999994 3.3879267080000002
6.8071872850000004 5.9284118840000000 3.2258552389999999
10.9027395489999996 1.6479413290000000 16.5421084040000004
1.9260156580000001 1.6862920640000001 9.7768143520000006
6.8164273719999997 6.5759444580000004 9.9320227840000008
10.9671636550000002 10.8803364120000001 23.0627127829999985
6.0890293069999997 6.1524409860000002 22.8977387270000001
5.2832847660000004 7.0128637100000004 16.9884651990000002
6.8507276480000003 8.4917076040000001 15.6636507040000001
6.6418872029999996 6.5992332789999999 14.6402772599999995
12.4477796719999994 8.1737635219999998 19.1996590800000000
1.7099607340000000 7.2072751950000002 17.4245277330000015
0.8690295720000000 9.4817382360000000 17.5776247649999995
0.2469380500000000 9.6557721910000005 20.0731025950000017
0.3495863380000000 6.1625663800000003 18.9544391969999992
0.4089476760000000 5.4875689159999999 20.5933678670000013
2.2513005850000001 4.7480202269999996 18.5497896530000013

3.2084228380000002 7.0214708410000002 21.7315625120000000
4.3664117359999999 5.8913270590000000 19.4749687880000018
2.0865063390000000 11.0367773880000009 18.6574852679999985
3.6471145890000001 8.1037703180000005 19.6470700019999995
3.6380012449999999 9.2442926009999997 17.2788221789999987
2.0058813390000001 6.8402224059999996 20.1992753289999989
3.0262885289999999 7.3348574959999997 19.1595361659999988
2.3482532209999998 7.9421404689999999 17.9363458280000003
1.5256747369999999 9.1474670840000005 18.4006511060000015
0.6438615860000000 8.7532010020000008 19.5876801600000015
1.0257232770000000 5.7493154210000004 19.7241471540000006

β-furanose@Sn

CONTCAR

O Si Sn H C

1.0000000000000000
12.6569995879999997 0.0000000000000000 0.0000000000000000
0.0000000000000000 12.6569995879999997 0.0000000000000000
0.0000000000000000 0.0000000000000000 26.3959999084000003

135 63 1 14 6

Cartesian

4.3841314579999997 8.2573000019999991 1.6640039179999999
4.2660415960000000 10.4165840939999992 0.1008327190000000
3.4429571819999998 10.5735305279999992 2.5709704489999998
6.0153654909999998 10.3205175199999992 2.0472737560000001
4.4767809060000001 6.3612814310000001 26.2038372379999984
3.0445146529999998 6.0143530649999999 2.0211416280000001
5.7050161150000003 5.9647377680000000 2.0905631809999998
9.0532986199999996 8.3040043850000007 1.6808972900000001
10.8633763870000006 10.2706491159999995 1.9335070770000000
8.4675330990000006 10.5908707789999994 2.9014483759999998
10.7270602119999996 6.2592659089999998 1.4615464949999999
8.3305839689999992 5.9052498059999996 2.5258331539999999
12.5362515410000004 8.2524905999999998 1.5098511870000000
0.7686595740000000 10.5504951909999996 2.4479650130000001
0.4417292660000000 5.8965163089999999 2.5202901359999998
9.1480992840000006 3.8917743269999998 14.6400129410000002
8.7490245550000001 1.7866620160000000 13.0673400999999991
9.6391908829999995 1.4731481479999999 15.5417007730000005
7.1061457350000001 2.1402986490000000 15.1056382379999992
9.0705121290000008 6.0024555480000004 12.9620194180000006
9.4595885830000004 6.4005178510000000 15.5010507949999994
6.3759638740000000 7.8069642170000000 15.6127064670000006
3.4151116880000001 4.0208756450000003 14.5027545650000000
2.0372707010000002 1.8553894989999999 14.7859828140000005
4.5104482270000004 1.8748813440000001 15.7449506590000006
1.8814630580000000 6.2001577960000001 14.5019616100000004
3.9873346879999998 6.0058730520000001 16.0706759679999998
0.3794568490000000 4.0387221090000001 14.7706743690000000
12.3036160619999997 1.7493238950000001 15.7816405789999994
12.1636296529999992 6.4219085610000004 15.6647064050000004
4.2694590999999997 3.7657106649999998 8.3292577570000006
2.4336878110000000 4.1651652419999996 6.4342890600000002
1.8662745900000000 2.6689814749999998 8.5507204449999996
2.1225787380000001 5.3336597599999997 8.7310045180000007
6.2312940509999999 4.1004880300000002 6.5382893299999996
6.6798584679999999 2.7549224670000001 8.7597766840000002
6.3012872560000002 5.4059309239999997 8.8178480799999992
4.4042562590000003 8.8329405059999999 8.4013191519999992
2.2438328099999998 10.3500083939999996 8.1365672359999994
2.0843547440000001 7.9539116219999997 9.2697469100000003
6.5712610439999999 10.3455784640000008 8.0813994099999995
6.7463074260000004 7.9855540910000000 9.2531176599999991
4.4071671730000004 11.8742907619999993 7.9768708970000004

2.2702860280000001 0.1046733880000000 9.2560212289999999
6.5978406270000001 0.1079642090000000 9.1311685140000005
8.7126986720000001 8.2474277140000005 21.9524965620000003
10.1949600710000006 8.3713397819999999 19.6932643740000017
10.8209751920000006 9.8348682780000001 21.8213096439999994
11.1141110590000007 7.1651274840000001 21.8089024090000017
7.1752532550000003 9.4380711309999992 20.2428280889999996
6.4001383799999996 9.4435142419999991 22.7153416800000016
6.3779887270000000 7.1070321740000004 21.5964155369999986
8.4843663819999993 3.7015396660000000 21.6162126749999999
10.6075780749999993 2.0904300560000002 21.4739385409999990
10.8079388840000004 4.5733536929999996 22.4342248320000017
6.4526645909999996 2.0100581630000001 21.7920096279999989
6.1009268230000000 4.5604433730000000 22.2948534810000005
8.5546130700000003 0.3851525010000000 21.4691871019999994
10.8691982150000008 12.3838617790000001 22.5899603280000001
6.2682525120000001 12.1075591960000004 22.3671791949999985
8.3429880759999993 8.5309440240000001 24.9106969059999983
8.8244601159999991 10.5126506689999992 0.2497061680000000
9.8823323579999993 10.5422682850000005 24.2228175400000012
7.2751168049999997 10.9894400490000006 24.6018643789999985
8.5447407830000000 6.3359677579999998 26.3281628890000015
9.9872587940000006 6.5241771890000004 24.1338633629999997
7.3377687869999999 6.2596457579999996 23.9604405569999983
3.8581066289999999 8.4923405590000005 24.7322599150000002
2.1714349039999998 10.5263199309999997 24.8494584080000003
4.6334742330000003 10.9299520870000002 23.9739034920000016
2.3162309030000001 6.3221713760000000 24.6578228009999982
4.7035941790000004 6.3126785600000002 23.5539423570000004
0.5944992529999999 8.3547592280000007 24.7607669769999994
12.4877757890000005 10.6558010979999995 23.7036079680000000
12.5729568950000008 6.0377686280000002 23.6621666089999998
4.6408154550000003 4.1059307640000000 11.6731026750000009
4.1928843709999999 1.9034861569999999 13.1512793059999993
3.0847638769999999 2.1337169349999998 10.8030905799999992
5.7155213570000001 1.7608417530000000 11.0271933050000008
4.2854070760000003 6.1999046890000002 13.3598069079999995
3.1761474139999999 6.2142069070000003 10.9804718700000006
5.8036141319999999 6.4451973819999999 11.2243709470000006
8.7520618339999992 3.8827877239999999 11.4244529450000005
10.7347809049999992 2.1022010199999999 11.2964323419999992
8.3075478769999993 1.4870708950000000 10.4707651760000005
10.7442737210000008 5.6179357660000004 10.9472133700000001
8.3014725649999992 6.2611643969999999 10.3894652220000001
0.0763217050000000 3.9217714149999998 11.4223407580000007
0.5217214999999999 1.4868177880000000 10.5723901189999996
0.5594393740000000 6.3879877560000002 10.6204307870000001
8.4309537320000008 4.2579410539999998 18.0208128850000016
10.4049396840000004 4.1745316939999997 19.8484728060000002
10.6612442089999995 2.8769360460000000 17.5670661860000017
10.7335149950000002 5.5442719509999998 17.6863760799999987
6.5356948580000003 3.7531801929999999 19.7914571099999996
6.0738410270000003 3.3503077339999998 17.2450350420000014
6.2493936220000004 5.8399396379999997 18.1741742339999988
8.2433772550000004 8.7809197529999992 17.9036143920000015
10.2378674790000002 10.5341673660000001 18.1710055590000010
10.6907343289999996 8.1271858800000008 17.0914093740000013
6.6734029300000000 10.9183076769999996 18.0738685230000016
5.5662952389999996 8.5742309030000001 18.3988040230000003
8.6241000610000000 0.0353130300000000 18.3301740479999999
11.0698117539999998 0.2366858910000000 17.4020905570000011
6.3135646210000003 0.6972740950000000 17.2094008229999993
4.3697024989999997 8.2238854099999994 4.7745083370000003
2.5077312859999998 8.0974422770000007 6.6839948839999996

2.0641035790000002 9.5737543509999998 4.5688835179999998
2.0992899170000001 6.9265426809999999 4.3479490739999997
6.2654679629999999 8.1009857679999993 6.6578627550000000
6.5737921090000002 9.6833642009999998 4.5752185079999999
6.7049186570000003 7.0367854850000002 4.3009641070000004
4.3751452329999996 3.6074979439999999 4.7000716159999998
2.2833227130000000 1.9641132870000000 4.9521535529999996
2.0138551379999998 4.3231248569999998 3.8250441569999998
6.4405139680000003 1.9604426770000001 4.9328846579999999
6.7813673989999996 4.3929913190000001 3.9683747779999998
4.3516029280000001 0.2883264420000000 5.0165599390000004
1.9896802560000000 12.1938802249999991 4.0343647149999997
6.6221418740000004 12.2246362550000001 3.8488005660000000
12.6156115740000008 10.3910169369999998 26.3350257290000016
0.2078279240000000 6.1972468820000000 26.2835528549999999
12.6040931510000007 1.9362677939999999 13.1589335280000004
12.2884274050000002 5.9538526770000004 13.0823857990000008
2.2538318390000001 12.5540980050000002 6.6240764050000003
6.5145576309999997 12.4786624439999994 6.4934161570000004
10.6756731689999995 12.4916995059999998 19.9778126409999999
6.4517789069999996 0.2346607790000000 19.8352741889999997
7.0558978589999999 5.4759241279999999 14.6674658749999995
0.8114402870000000 9.7753803159999997 18.3304383669999993
3.2415843230000001 7.0624793840000004 18.5719609380000001
3.7252079579999999 8.8963521859999997 16.3454586120000016
2.6748036800000001 11.0757603240000009 17.6393903260000009
0.0553110910000000 9.6000812050000004 15.5110807370000003
1.9185480720000001 7.8725274909999996 21.3121300140000010
4.5236116539999998 9.8739787099999994 1.5990696820000001
4.4072939150000003 6.6504935810000001 1.4079626130000000
9.2994773740000003 9.9109367939999995 1.6859124580000000
9.1677178710000007 6.7075772190000000 1.3952925350000001
12.3575349249999995 9.8634734680000005 1.4586429260000000
12.2936170330000003 6.6558099500000001 1.3414447279999999
6.9109745530000000 10.7061764690000008 3.3541395710000002
8.6359972010000003 2.3372415769999999 14.5932930790000004
8.6533374520000006 5.4436490810000002 14.4386117110000001
3.5520604410000001 2.4197652530000000 14.5539631210000007
3.4178962380000000 5.6346430620000003 14.6228558409999998
0.5177978760000000 2.4255874579999999 14.6022673209999994
0.3561679570000000 5.6484390670000000 14.5051302849999999
6.0249850489999996 2.0285373930000001 16.3211743530000000
2.6767023559999998 3.9869548400000001 8.0286073029999994
5.8709491519999997 4.0104967670000002 8.1207293679999992
2.8083351169999999 8.8204096570000008 8.1141300600000008
5.9963802360000003 8.8243333750000001 8.0935415390000003
2.7904886530000002 11.8787206919999999 8.0014194740000004
6.0237191389999998 11.8673290110000007 7.9195916689999999
2.0033498960000000 6.4598798249999998 9.8971799469999997
10.2012888660000005 8.4194360629999991 21.3123943320000002
7.1458891219999998 8.5501831399999997 21.5987912559999984
10.0754779330000002 3.6250913009999999 21.3369429100000012
6.8933815720000000 3.5142159190000002 21.3480285519999988
10.1683804870000003 0.5279234590000000 21.3651856530000011
6.9388200460000000 0.5195698110000000 21.3630742510000005
11.0809499509999991 6.0602981290000004 23.0210071049999989
8.5758762839999996 10.1321813459999994 25.0915096159999997
8.5527142049999991 6.9198351679999996 24.8088084309999992
3.7226768920000000 10.0791481669999996 25.0112653619999996
3.8383616770000000 6.8751556369999998 24.7945541140000003
0.6477852560000000 9.9708042270000004 24.9231025670000008
0.7642296430000000 6.7409910560000004 24.8581683310000017
6.1559848549999998 10.8886900600000001 23.4166839809999985
4.4132424840000004 2.4943149409999998 11.6535698550000006

4.4756417380000002 5.7242544769999997 11.8156411269999992
9.1515167890000004 2.3139527559999999 11.5783413589999995
9.2103717960000004 5.4446615080000003 11.4442500840000001
12.3007047709999995 2.3617961190000001 11.6174077849999993
12.2474188620000000 5.4749117020000000 11.5273971209999999
6.8103520599999996 1.5437742130000001 9.8441243079999996
10.0315580989999997 4.2007314290000002 18.2678798499999999
6.8151614619999998 4.3429961739999996 18.2918997909999987
9.8452467779999999 8.9600165950000008 18.2182556310000017
6.9018619619999999 9.4127574569999997 18.6363681099999994
10.1423071169999996 12.1269242990000006 18.4837997160000000
7.0112183280000000 12.4770170629999999 18.3636968670000016
10.7549057050000005 6.6022705579999998 16.4544742460000002
2.7685921069999999 8.2018624990000006 5.0883570149999997
5.9733445219999997 8.2559073499999993 5.0722552219999999
2.7808694720000000 3.5058622709999998 4.9901638850000003
5.9579027590000004 3.5078874999999998 5.0471791880000003
2.7369496380000000 0.4245157570000000 5.1649051369999999
5.9724584610000004 0.4112259180000000 5.0772705860000000
1.9196870520000000 5.8063986820000002 3.1820377670000002
2.0600533090000002 10.7073156380000007 3.4019163140000002
6.8661690340000003 5.8308266709999996 3.2240073699999998
10.8969169669999992 1.6208553440000000 16.5616427970000011
1.9414572329999999 1.6018699000000001 9.7889564819999997
6.7741529189999996 6.5069636800000001 9.9206728240000004
10.9996918079999997 10.8484412139999993 23.0951799010000016
6.1454796130000000 6.0730817070000001 22.8626315710000014
5.1882306180000004 7.1344974409999997 17.0937850940000011
7.2413227420000004 8.0752926239999994 15.9838331920000005
6.7042864570000003 6.4019105029999999 14.8596285459999997
0.6486712230000000 7.7734228830000003 18.9341149950000016
3.4154911600000002 9.0875988959999994 18.9840035319999991
1.8707045200000001 8.0635214719999997 16.5297027420000013
2.0441055210000001 9.8389187370000002 20.7427691600000017
3.4849781510000000 6.8842689820000000 19.5055888230000001
4.1499769630000003 9.7418397359999993 16.6207698939999986
2.3136994610000001 11.9706108199999992 17.4899890330000005
1.5956678470000001 10.8933734750000006 15.2658624270000001
0.3331322200000000 11.4907834060000003 16.3853172069999999
12.0464258520000005 9.3414983429999996 16.1796916009999983
0.3747737650000000 9.2722648359999997 20.9713574330000014
1.1930487770000000 7.2615735289999996 21.5409841779999986
1.3098729179999999 8.6434651650000003 19.1056891449999995
2.6948017379999998 8.3982988370000005 18.5183782350000001
2.4891255019999998 8.7952227260000004 17.0695008349999995
1.7124919880000000 10.1010450899999995 17.2540092839999986
1.3645511010000000 8.9857104929999991 20.5899364469999995
0.8954826970000000 10.5925161600000006 16.0598546440000014

β-pyranose@Sn

CONTCAR

O Si Sn H C

1.0000000000000000

12.6569995879999997 0.0000000000000000 0.0000000000000000

0.0000000000000000 12.6569995879999997 0.0000000000000000

0.0000000000000000 0.0000000000000000 26.3959999084000003

135 63 1 14 6

Cartesian

4.3684369660000000 8.3267869930000007 1.7223390430000001

4.2859132899999999 10.4688575759999996 0.1449140370000000

3.5561105230000001 10.6963034280000002 2.6396000300000000

6.0935859790000002 10.3310227619999999 2.0538726710000001

4.5331044699999996 6.4670943049999998 26.2307615349999992

3.1117233080000002 6.0270099019999996 2.0163903849999998

5.7824769060000003 6.0716894330000004 2.0992738910000002
9.1343032789999992 8.4444970070000007 1.7292018830000000
10.9552657599999996 10.4065850649999998 1.9704613150000001
8.5347417540000006 10.7555386599999991 2.8816512379999999
10.7897121949999999 6.3827981290000002 1.5209375169999999
8.3923502669999994 6.0625760880000001 2.6295694979999999
12.5995364779999992 8.3733646349999997 1.5412624079999999
0.9051020660000000 10.7056702559999994 2.2880053380000001
0.5083051079999999 6.0252381560000003 2.5535490300000001
8.9936839160000002 4.0777054220000002 14.6476687370000000
8.6887768960000002 1.9272813799999999 13.1227714580000008
9.6652642530000001 1.7051509549999999 15.5694164520000005
7.0910838199999997 2.2292772969999999 15.206996490000001
9.0373510209999992 6.1195326070000000 12.8949737800000008
9.4126307160000007 6.5721467279999999 15.4276693809999994
6.2209151739999999 7.9617590570000001 15.8006447619999992
3.6226866000000002 4.1560522750000004 14.6912214970000008
2.0513200010000001 2.0632175180000001 14.7682986500000002
4.4950068410000004 1.8863992020000000 15.7803205599999998
1.8084320089999999 6.1247222350000001 14.4573531489999993
3.8970903190000001 6.4411469229999998 15.9458232530000004
0.1839062080000000 4.0451768919999997 14.6835672749999997
12.3488018060000009 1.7259085210000000 15.7655391789999992
12.1094580609999998 6.4379829019999999 15.6710406080000002
4.2661683379999999 3.8417791810000002 8.3308413080000001
2.4533062100000000 4.2128824290000004 6.4147558470000003
1.8750078980000000 2.7387215720000002 8.5515118270000006
2.0889112280000002 5.4022606900000003 8.6845481880000008
6.2271172269999999 4.1517490859999997 6.5293146950000001
6.6932742469999997 2.8738983910000000 8.7869645129999991
6.2716700169999999 5.5197175979999997 8.7729745139999995
4.3580580879999999 8.9133122109999992 8.4419683429999992
2.2156078450000001 10.4464544400000001 8.1278565270000005
1.9730997020000001 8.0306130929999995 9.1865998730000005
6.5327835670000001 10.4383542760000001 8.1328714980000001
6.7060578250000002 8.0814939230000000 9.2916562359999997
4.3853973679999996 11.9714965039999992 7.9784552340000001
2.2485160350000002 0.1812482350000000 9.2726504799999994
6.5778425690000004 0.2226366150000000 9.1187620660000004
8.7769960359999999 8.3652644699999996 22.0728637300000017
10.1318018750000007 8.3245086570000009 19.7452643119999998
10.8979301470000003 9.9034695849999999 21.7603338909999984
11.1467667089999996 7.2338547780000004 21.8941624210000008
7.2265135559999996 9.4951547690000009 20.3286151649999987
6.4215290899999999 9.5024952359999997 22.7895144760000008
6.4841810720000002 7.1523439050000004 21.6800912110000006
8.5465121509999999 3.7136902890000001 21.5459983629999989
10.7001011580000007 2.1696627810000000 21.4499170270000015
10.7728789109999994 4.6486628899999998 22.5002147689999994
6.4627903619999998 2.0852406170000002 21.7782839469999985
6.2304079899999998 4.6051229039999999 22.4329048130000004
8.5946091869999997 0.5104567960000000 21.4631156439999984
10.9207127550000003 12.4511964220000007 22.5263461099999986
6.3387523070000000 12.1743883789999998 22.3909348170000015
8.4239927360000006 8.6266311269999996 24.9793268809999987
8.9691299390000001 10.6377019040000000 0.2388838110000000
9.9532112470000005 10.6078315589999992 24.1689689459999997
7.3595389689999999 11.0798107829999992 24.6242999820000001
8.5951153999999992 6.4460830659999999 0.0287716410000000
10.0619346580000002 6.5993592669999996 24.2394460040000013
7.4076352500000002 6.3462195159999997 24.0699848269999990
3.8905084169999999 8.5787875749999998 24.7264527759999986
2.2087730250000002 10.5990976850000003 24.8713669479999986
4.6992909909999998 11.0327269280000007 24.0393647920000006

2.3744531439999998 6.3901393500000001 24.6572957369999983
4.7813080770000003 6.3836845670000004 23.6048865950000000
0.6494306370000000 8.4170309850000002 24.6860671170000003
12.5586546769999998 10.7385778809999994 23.6442165529999997
12.6121940689999992 6.0211876970000002 23.7255165079999983
4.5341168959999996 4.1994658960000004 11.6105441579999997
4.2159200849999996 2.0591672470000000 13.1816342360000007
2.9818624819999999 2.1835855280000001 10.8796390949999999
5.6279347959999999 1.8515925240000000 10.9923504679999997
4.1726332060000004 6.2952119440000001 13.2695327120000002
3.2574055569999998 6.3926704159999996 10.8197206169999998
5.8566469339999996 6.4601325550000004 11.2415288340000004
8.7316843039999998 3.9730320930000000 11.4075593770000001
10.6809887840000002 2.1590309859999999 11.3486958120000008
8.2427443000000000 1.5606080620000000 10.5388673009999998
10.7440209919999994 5.6798284289999996 10.8997005520000005
8.3193190290000008 6.3288792650000003 10.3031502960000001
0.0341739000000000 3.9665769329999998 11.4796199849999994
0.4328694050000000 1.5692148170000000 10.4992730240000007
0.5967775420000000 6.4089982409999999 10.6494664849999996
8.4865179760000000 3.8745608180000000 18.1406514150000007
10.5156887020000003 4.2812302520000003 19.8606141489999999
10.8685652600000004 2.8490905529999999 17.6665789410000009
10.5668230160000007 5.4988334779999999 17.5831675859999983
6.4872183510000001 3.9740448970000002 19.8793555859999991
5.9976457690000000 3.2774036160000000 17.4110647980000017
6.6653027659999999 5.8070312590000004 17.9038787100000008
8.2205946470000004 8.8936936240000009 17.9535029289999990
10.3479827869999994 10.5050567170000004 18.2797584479999990
10.6551688969999994 8.1089599450000005 17.1610950500000001
6.4611449810000003 10.8754002690000000 18.1934427360000015
5.5965454330000002 8.4015895989999994 18.6487737719999984
8.5670164230000001 12.5054955109999995 18.3056254709999990
10.9777956390000000 0.1999805840000000 17.3036335020000003
6.2960980060000002 0.6403176220000000 17.2078164849999986
4.4098253569999999 8.4551289910000005 4.7660615530000001
2.5258308569999999 8.2307204190000007 6.6401778050000004
2.0056282319999998 9.5831204250000006 4.4469339789999998
2.2604135520000002 6.9443891449999997 4.3653704930000004
6.2377492119999998 8.2157852459999994 6.6950813130000002
6.7245372440000004 9.7226006209999998 4.5736349570000003
6.6587212410000003 7.0667825730000002 4.3891269020000001
4.3926118479999996 3.6738205370000001 4.6678688169999996
2.2958531849999999 2.0238541670000001 4.9231178550000001
2.0211961710000002 4.3671710560000001 3.8057752620000000
6.4417798780000002 2.0136020320000001 4.9204782099999997
6.8154141910000003 4.4494416259999996 3.9620393950000001
4.3493245920000003 0.3408530070000000 5.0252706480000002
1.9839846040000000 12.2403311240000008 4.0604968430000001
6.6108776889999996 12.2727332899999997 3.8480087900000002
12.5823229689999998 10.4275955489999994 26.2595329140000011
0.2780742820000000 6.3249559250000003 26.3202427750000005
12.6306727339999991 1.8915886399999999 13.1211879069999995
12.2134980570000007 6.0504254639999999 13.0707715199999992
2.2372512850000001 0.0015188400000000 6.6367463850000004
6.5091152740000000 12.5337204750000009 6.4928879129999997
10.6706102830000003 12.6238384799999999 19.9065426290000005
6.4700048419999998 0.2983254710000000 19.8487355510000008
6.9683109200000004 5.7729840899999996 14.5756073419999996
2.6910047630000000 6.0304274060000003 20.3249194260000010
3.1477957079999999 7.8756915110000003 18.1026414759999987
3.8977228970000000 5.3258123260000003 18.4669053609999985
1.7950156639999999 4.0499866710000001 17.4147605369999994
0.7965050200000000 4.0645423730000001 21.5404555420000001

1.1514072790000001 2.1975082750000001 19.5029487850000010
4.5749990750000000 9.9381493320000001 1.6423591070000001
4.4579216380000002 6.7256764120000003 1.4388459840000001
9.3918737149999991 10.0514294159999995 1.6977906620000001
9.2301171249999996 6.8403491479999996 1.4787038910000001
12.4185415270000004 9.9790318879999997 1.4203687659999999
12.3548771179999992 6.7792158049999998 1.3786630879999999
6.9794491179999998 10.7721192139999999 3.3546678150000000
8.5913184240000007 2.4989979779999998 14.6434443610000002
8.5625864919999994 5.6397059479999996 14.3837089900000006
3.5942081520000002 2.5487400180000002 14.6012116200000008
3.3973919659999998 5.7595675560000004 14.5967244990000005
0.4888133090000000 2.4530531029999998 14.5589773050000009
0.2621264710000000 5.6588179450000000 14.4855974649999997
5.9962534940000003 2.0108174820000002 16.3913886660000010
2.6755631879999999 4.0536572819999996 8.0135616039999995
5.8653800530000000 4.0992224970000004 8.1138665280000009
2.7718828690000001 8.9162235019999994 8.0961807910000001
5.9530933570000002 8.9201472200000005 8.1365672359999994
2.7694781680000000 11.9721294589999996 8.0101301839999994
6.0019493349999999 11.9590923969999992 7.9301502480000003
1.9871490020000000 6.5432888089999999 9.8385806999999996
10.2412849829999999 8.4715828030000004 21.3519886089999993
7.2100597439999996 8.6192899050000005 21.6885368149999991
10.1502805400000007 3.7030583049999999 21.3350942540000013
6.9427437630000002 3.5933220910000001 21.3844557269999989
10.2090095590000001 0.6188006890000000 21.3234799750000015
6.9750191870000000 0.5934867330000000 21.3659786079999989
11.1093016579999997 6.1238361729999999 23.0848856409999996
8.6754871050000002 10.2305262569999993 25.0938853359999996
8.6275175659999999 7.0157750009999997 24.9006669639999991
3.7643183900000001 10.1636970729999998 25.0418853980000016
3.8946852409999999 6.9641344739999997 24.8230627480000017
0.6825919810000000 10.0368744690000007 24.8747983680000004
0.8152373570000000 6.8107315310000001 24.8674068910000017
6.2173713050000003 10.9702009329999992 23.4599724230000000
4.3464136780000002 2.5872173059999999 11.6538341740000000
4.4538715560000002 5.8208276410000002 11.7491233400000006
9.1015216429999999 2.4057159530000001 11.6211027369999993
9.2041697419999995 5.5308557949999999 11.3948893970000000
12.2585570599999993 2.3995138990000000 11.6176713169999992
12.2281805010000006 5.5299697329999997 11.5287171399999995
6.7725075380000002 1.6459162880000000 9.8581143069999992
10.0856037050000005 4.1311180729999997 18.2916354719999994
6.9059124220000001 4.2774329000000000 18.3251582910000010
9.8342353229999997 8.9630546280000001 18.2731583529999995
6.8543978819999998 9.3951644769999998 18.7411593689999982
10.1325608169999999 12.1043951750000005 18.4568754189999993
6.9480601330000002 12.4122134860000006 18.3856054059999998
10.6798496150000002 6.6425201580000000 16.4333570890000011
2.8102336050000001 8.3028652170000008 5.0514023830000001
6.0042272939999997 8.3624799210000003 5.1018187700000004
2.8001080219999999 3.5606671959999998 4.9698388969999998
5.9720786119999998 3.5662362939999999 5.0334531140000003
2.7365697889999998 0.4889399100000000 5.1712405209999996
5.9698002760000000 0.4656509950000000 5.0759509600000001
1.9898069979999999 5.8609501230000003 3.1870529350000001
2.1070107990000002 10.7907253749999992 3.3612667300000001
6.9045197700000003 5.9163880029999998 3.2717841129999998
10.9450140020000006 1.6442709069999999 16.5650742169999994
1.8931074680000000 1.6757868220000001 9.7942357710000003
6.7733932220000002 6.5811333310000002 9.9040427869999998
11.0667744750000008 10.9175479800000002 23.0318300019999995
6.2454699050000002 6.1368728580000003 22.9526414490000015

5.2054441269999998 7.0150153040000003 17.2753907590000004
7.0847557790000000 8.2761588919999998 16.1371945419999996
6.6360646210000001 6.6736564139999999 14.8963184660000003
4.1006147720000001 4.6314493810000004 20.9732060890000014
3.0418566569999999 2.9157929949999999 19.3978916350000006
2.5601313220000002 2.9547764970000001 21.7748525270000002
3.0769166299999999 5.4050452389999997 22.2119691890000013
1.2477270549999999 7.3743474000000004 18.8134850819999997
1.7493238950000001 6.6744153559999999 17.2344764640000001
3.4078972080000001 8.2418586160000000 18.9737092720000007
3.7259676549999998 4.6637248050000002 17.7507816789999993
1.4245452770000000 3.1442518389999998 17.3577448409999998
0.7857465290000000 4.4484291989999996 22.4381833159999999
0.6232306670000000 4.7649806290000001 19.0048563709999998
0.3313602380000000 2.3977419649999998 19.9994568619999998
2.5725352400000001 5.6735000109999998 18.9832105760000012
1.6590795260000000 4.4512137489999999 18.7807536450000008
2.0486620050000002 3.2865165840000001 19.7032943150000008
2.1349826570000001 3.7629261160000000 21.1474187039999997
3.0769166299999999 4.9576199909999996 21.2126172580000016
2.0761276500000001 6.9232519180000001 18.2483470300000015

α -furanose-3@Sn

CONTCAR

O Si Sn H C

1.0000000000000000
12.6569995879999997 0.0000000000000000 0.0000000000000000
0.0000000000000000 12.6569995879999997 0.0000000000000000
0.0000000000000000 0.0000000000000000 26.3959999084000003
135 63 1 14 6

Cartesian

4.2012381550000004 8.3941221240000008 1.6814250950000000
4.3450212480000001 10.4736671450000003 0.0411777610000000
3.3635976310000002 10.8023700710000004 2.4405741690000000
5.9454989429999996 10.3749427799999996 2.1100962160000001
4.4646301270000004 6.5554394719999998 26.1703147889999990
3.0404644009999999 6.0452361110000004 1.9538319110000000
5.7002062799999997 6.2049674990000003 2.0609996320000001
8.9790019989999994 8.5210714339999996 1.6642678980000001
10.8161659239999999 10.4625291820000008 1.8791311980000001
8.4170312880000004 10.8613510130000002 2.7979760169999999
10.7004804609999997 6.4981036190000001 1.5275365110000001
8.2994480129999992 6.1369991300000004 2.5765135290000001
12.5311889650000001 8.4632291790000007 1.5090593100000000
0.6998054980000000 10.8112297060000007 2.3722083569999999
0.4385650460000000 6.1075086589999996 2.5158028600000000
9.0781059269999993 4.0568218229999999 14.6014757159999995
8.6809291840000000 1.9214591980000000 13.0747308730000000
9.6700744630000006 1.6751538520000000 15.5219039920000004
7.1027283670000001 2.2838289740000000 15.1579027180000008
9.0108976359999993 6.1287722589999998 12.8701620099999996
9.3068189619999995 6.5740456580000002 15.4126234049999997
6.3578639030000001 7.8922719959999998 15.5897426610000007
3.5391502379999999 4.3267955779999996 14.9464712140000007
2.0487885480000001 2.1754851340000001 14.6621856689999994
4.4856410029999996 1.9775296449999999 15.7272653580000004
1.7441344260000000 6.2582535740000003 14.4330692290000009
3.7746968270000001 6.7550406460000003 15.9611330030000005
0.1758057180000000 4.1406106950000003 14.6777601240000006
12.3579139710000003 1.7743848560000000 15.7235689159999996
12.0037717819999994 6.5189876560000002 15.5746965409999998
4.2884445189999996 3.7760891910000001 8.2263135910000003
2.3610365390000001 4.3176822660000003 6.4704513549999998
1.8599461319999999 2.8380792140000000 8.6238365170000009
2.2872464660000000 5.4785823819999999 8.7964668269999997
6.2657208439999996 4.2709779740000000 6.4915680890000003
6.7503581050000001 2.9598393440000001 8.7259893420000001
6.1605415340000000 5.5849008560000000 8.7724466319999994

4.2779393199999998 8.9992532730000008 8.4435529710000008
2.1184020040000000 10.5077142719999994 8.0367898940000000
1.8700717689999999 8.1037702560000007 9.0960617070000005
6.4489941599999998 10.5375852580000000 8.1460695269999999
6.6341667180000004 8.1507282260000000 9.2684278490000001
4.2849006650000003 12.0142774580000005 7.8786783219999998
2.1727006439999998 0.2308636610000000 9.2056045530000006
6.3739380839999997 0.3388278780000000 9.1425180439999991
8.6615648269999994 8.4606981280000007 21.9480094910000005
10.0680103299999999 8.4148797989999995 19.6702976229999997
10.8670463559999995 9.9013175960000002 21.7553195949999996
11.0127286909999995 7.2244887350000004 21.7669334409999990
6.9770445820000004 9.4295911790000009 20.1934680940000000
6.3087549210000002 9.5278100969999997 22.6886825559999998
6.3986196519999998 7.1456356049999998 21.6249217989999991
8.5057573319999999 3.7879867549999999 21.5082530980000008
10.6474475860000002 2.1867496970000002 21.4095306399999998
10.8121156690000007 4.6461315159999996 22.4249858860000018
6.4496273989999997 2.1249835490000000 21.7508335109999997
6.1563649180000004 4.6248674390000000 22.3927822110000001
8.5495500559999993 0.5151398780000001 21.4322338099999996
10.8891963959999991 12.4708147050000004 22.4775123599999998
6.2550892830000002 12.1964111329999998 22.2816543580000008
8.3664035800000001 8.6637163160000004 24.8882598880000003
8.8173723220000007 10.6960506439999996 0.1604876820000000
9.9024562839999994 10.6550416949999995 24.1365013120000000
7.2896723750000003 11.1105670930000002 24.4962806700000009
8.5499296190000003 6.4970912930000004 26.3608932500000002
9.9058742520000003 6.5880951879999996 24.0955886839999991
7.2503094670000001 6.4072260859999997 24.0549392699999984
3.8039345739999999 8.6184043880000001 24.6137409210000015
2.1686503890000002 10.6685848239999999 24.8824520110000016
4.6172733309999998 11.0784187319999994 23.9419631959999997
2.2667419910000000 6.4397549630000004 24.6715488430000001
4.6411952970000003 6.3769764899999997 23.5317687990000017
0.5888035890000000 8.5017070770000007 24.7095603940000004
12.5171403879999996 10.7947750090000003 23.6328659059999993
12.5019512180000003 6.1623134610000001 23.6875057220000009
4.2473096850000003 4.3847641939999997 11.4120464320000004
4.2508535390000004 2.4257140160000001 13.1871776579999995
2.9937601090000001 2.1028339859999998 10.9047155379999996
5.6471734050000002 2.1357421880000000 10.9894466400000006
4.1718735689999997 6.3063502309999997 13.3291883470000005
3.0904595850000001 6.7236514090000004 10.9862785340000002
5.7351393699999997 6.5683498379999996 11.2212038039999999
8.6734619140000007 3.9863219260000000 11.3764123920000007
10.6461820599999992 2.1930782789999999 11.2842903139999997
8.2007236480000003 1.5703539849999999 10.4934654240000000
10.6632690429999997 5.7099523540000003 10.8442687990000000
8.2083177569999997 6.3595094679999997 10.3108053210000001
12.6390266419999993 4.0158128739999999 11.3999042510000006
0.4169215560000000 1.5926301480000000 10.5137910839999993
0.4876741770000000 6.4449439049999997 10.5122070310000009
8.4829740519999994 3.8884835240000002 18.1282443999999998
10.5073347090000002 4.3012285229999998 19.8191719060000011
10.8504657750000000 2.8914916520000000 17.6003246309999994
10.5127773280000003 5.5526256560000000 17.5456848140000012
6.4498806000000002 4.0022697450000004 19.8321075439999994
6.0023288729999997 3.4068844320000000 17.3165683749999992
6.7390928270000003 5.8870234490000000 17.9313297270000014
8.1270589829999995 8.9098949429999994 17.8772182460000018
10.2177429199999992 10.5712528230000000 18.1820926669999992
10.5526466370000005 8.1675615310000005 17.0795326229999996
6.4878511430000003 10.9937429430000009 18.1058082579999997
5.4075765609999999 8.6071395870000007 18.2818698879999992
8.5600557330000004 0.0116444400000000 18.2288150790000003
11.0160198210000004 0.2465583380000000 17.2867412569999992
6.2621769909999996 0.7529649140000000 17.1613597869999985
4.3857769969999998 8.5968875889999996 4.6947927470000002
2.5215275290000001 8.2948913569999991 6.5712842939999998

2.0075266360000001 9.7751274109999997 4.4580202099999999
2.2107980249999999 7.1348767280000001 4.2362942700000001
6.1504158970000002 8.3142557139999997 6.6826758379999998
6.7346630100000002 9.8030986789999996 4.5860409740000003
6.6007518770000004 7.1455087659999998 4.3769845959999998
4.3255295750000000 3.8038079740000001 4.7399296760000000
2.2300367360000002 2.1567525860000001 4.9307727809999999
1.9576581719999999 4.5224723820000001 3.8614709380000001
6.3741917609999996 2.1125798229999999 4.8975138659999997
6.7133989329999997 4.5356359480000004 3.8955216410000002
4.2793312070000002 0.4622336330000000 5.0305495259999997
1.9495575430000001 12.4072771070000005 3.9638872150000002
6.5208864210000002 12.3498144150000009 3.8567194940000000
12.5513133999999997 10.5450525279999994 26.2626991270000012
0.1444163620000000 6.3953289990000002 26.2880401610000014
12.5638446810000008 2.0003123280000001 13.1093091959999999
12.1950197219999996 6.0992813110000004 12.9852476120000002
2.1254899500000000 0.0773342700000000 6.5675883290000003
6.4450707439999997 12.6497850419999995 6.5034465790000002
10.6280822750000006 12.6277618409999999 19.8717021940000009
6.4520325659999997 0.3864181940000000 19.7822189329999993
6.9452757839999997 5.5998363490000003 14.5022258760000007
1.6919877530000000 5.9032244680000003 20.8282928470000002
1.7441344260000000 3.6502785680000001 18.0625190730000007
3.9746775630000002 6.2205357550000002 18.7068443299999991
0.4309708180000000 6.8207306860000001 19.0748043060000008
3.6110417840000002 8.0650396349999998 20.4661369320000013
1.6027557850000000 2.2320618630000002 21.0362911220000015
4.4639973639999999 9.9961185459999999 1.5795366760000000
4.3595771790000004 6.8006057740000001 1.3781350850000000
9.2521400450000009 10.1243343350000004 1.6201864479999999
9.1351900100000005 6.9193282130000000 1.4293433430000000
12.3107042310000008 10.0664911270000008 1.4050590990000000
12.2684297559999997 6.8687009809999999 1.3549066780000001
6.8895845409999996 10.8531236650000000 3.3501803870000000
8.6118230820000008 2.4901380540000000 14.5969867709999992
8.5580301280000004 5.5879387859999996 14.3422660830000002
3.5694003109999999 2.7398607730000002 14.6268157960000007
3.3201842309999998 5.9099326129999996 14.6603384020000007
0.4756500120000000 2.5484869479999999 14.5346927640000008
0.2061825250000000 5.7475438120000000 14.4291086199999992
5.9849891660000001 2.1146049499999999 16.3290920260000014
2.6972067360000000 4.1103606220000000 8.0465564730000008
5.8701896670000000 4.1571912769999999 8.0650339130000006
2.7040414810000000 8.9888744349999996 8.0325670240000004
5.8742399220000001 9.0124168400000002 8.1297044750000005
2.6706268789999998 12.0336418149999993 7.9285669329999999
5.8989214900000002 12.0535135269999998 7.9201192860000003
1.9414572720000001 6.6680874819999998 9.8459720609999994
10.1474962229999992 8.5203123089999995 21.2823028560000012
7.0774145129999999 8.6291627880000004 21.5921916960000004
10.1057281490000008 3.7269799710000000 21.2857341769999984
6.8949003219999998 3.6377482410000002 21.3477649690000000
10.1592674259999995 0.6309514050000000 21.2828292849999983
6.9312262540000003 0.6361408230000000 21.3126583099999998
11.0333595280000001 6.1506690979999998 23.0070171360000018
8.5901794430000002 10.2701425549999996 25.0110015869999991
8.5219583510000003 7.0461516380000004 24.8299255370000012
3.7212846279999998 10.1972379679999996 24.9698238369999999
3.7905180449999998 7.0028648379999998 24.7546977999999989
0.6398113370000000 10.1172466280000002 24.8824520110000016
0.7170190220000000 6.8864207270000000 24.8484020229999985
6.1277599330000001 10.9986791610000001 23.3559722900000004
4.2908492090000001 2.7694780830000001 11.6100158689999997
4.3161635399999998 5.9800524709999996 11.7480678560000005
9.0669679639999998 2.4184994700000000 11.5717420579999999
9.1326580049999997 5.5488286020000004 11.3595190049999992
12.2161569599999993 2.4514076710000001 11.5867881770000007
12.1621112819999997 5.5728769299999996 11.4450416560000008
6.7273216250000001 1.7595760819999999 9.8333024980000001

10.0842113490000003 4.1663045880000000 18.2457065579999984
6.9159116740000002 4.3223657610000004 18.2982349400000004
9.7415866849999997 9.0201377869999995 18.1910667420000003
6.7449150089999996 9.4703464509999993 18.5817279820000003
10.0973749159999997 12.1737556460000000 18.3966922759999996
6.9443893430000001 12.5327081679999992 18.3188247679999989
10.6068191530000000 6.6868195530000003 16.3879566190000006
2.7864384649999998 8.4466485979999995 4.9835648539999999
5.9657502170000001 8.4575338359999996 5.0817575450000003
2.7283427720000000 3.6943252090000001 5.0139203070000002
5.9205646510000003 3.6707828039999999 5.0165600780000004
2.6640453339999999 0.6132316590000000 5.1313824649999997
5.8993381499999998 0.5675398710000000 5.0780625339999999
1.9263952970000000 5.9700531960000003 3.1429717540000000
2.0038561819999998 10.9309644699999993 3.3111143109999999
6.8166799549999997 6.0133404730000004 3.2306065560000001
10.9560251239999999 1.6775587800000000 16.5165061950000016
1.8720967770000001 1.7062901260000001 9.8037385940000004
6.6732764240000000 6.6523923869999999 9.8929567340000002
11.0285501480000008 10.9436216349999995 23.0091285710000015
6.1180138590000004 6.1557316780000004 22.9117279049999993
5.3459367750000002 7.0100793840000000 17.0922031399999987
7.2653713230000001 8.1064290999999997 15.8898630139999995
6.6070809360000000 6.5306320189999996 14.6864700320000008
0.4372993410000000 4.3955225940000000 20.0902595519999991
3.3468902109999998 3.9959414010000001 19.3577709200000001
2.2154812810000002 6.0206813810000002 17.6116752619999986
2.9290828699999998 3.6335713859999998 21.7246990199999992
1.6374360320000001 2.7403669360000000 18.4001235960000002
4.0849199299999999 6.8021244999999997 19.5327758789999990
12.4452476500000007 6.9266695980000001 19.8067665099999992
1.5999711750000001 8.4857587809999995 20.8301391600000017
2.1210598950000001 8.7409238820000006 19.1355171199999994
4.1320042609999996 8.6648550029999996 19.8880653380000005
1.2913936380000000 3.8093769549999998 22.4094123839999995
0.6549997330000000 2.0418272019999999 21.1653690340000011
1.4940322640000001 4.5422172549999997 20.3800888059999998
2.3548347949999999 4.4110908510000000 19.0996170039999988
2.5569670200000001 5.8651270870000003 18.6395359039999988
1.7250224350000001 6.6975779529999997 19.6518211359999988
1.8543770310000001 3.5711724760000001 21.4916229250000015
2.2349729539999998 8.0944042209999996 20.0179347989999989

α -pyranose-2@Sn

CONTCAR

O Si Sn H C

1.0000000000000000
12.6569995879999997 0.0000000000000000 0.0000000000000000
0.0000000000000000 12.6569995879999997 0.0000000000000000
0.0000000000000000 0.0000000000000000 26.3959999084000003

135 63 1 14 6

Cartesian

4.2571816440000001 8.2461614609999998 1.7846336359999999
4.2800912860000002 10.3710184099999996 0.1689343900000000
3.3610661030000002 10.6108684540000002 2.6029095650000000
5.9403100010000003 10.2714080810000006 2.1985228060000002
4.4545044899999997 6.3859629629999999 26.2872486109999990
3.0386924739999999 5.9267663959999997 2.0937306880000000
5.6986875530000001 6.0161252019999996 2.1686954500000000
9.0074806209999991 8.3814649580000005 1.7946640250000001
10.8128747940000007 10.3598804470000001 1.9554156060000001
8.4180440900000004 10.7164278030000002 2.9067275520000000
10.7056703570000007 6.3405237200000002 1.6463184360000001
8.3012199399999993 6.0042271610000002 2.7124528880000001
12.5041027069999995 8.3324832919999992 1.6669074300000000
0.6948692800000000 10.6771917340000009 2.4901986119999999
0.4375524820000000 5.9829635620000001 2.6712751390000000
9.0065946579999991 3.8756999699999999 14.7170896530000004
8.6023302079999997 1.7804601190000000 13.1314821239999997
9.6417226790000008 1.4501124620000001 15.5205831530000005

7.0574164389999998 2.0453710560000000 15.2444829940000002
9.0532989500000003 5.9376516339999998 12.9752178189999992
9.4570569990000006 6.3790011409999998 15.5155696869999993
6.2754669190000003 7.8967018130000000 15.7050924300000005
3.4977617259999998 4.1314978599999996 14.9385528559999994
2.0273981089999999 1.9670244459999999 14.9438314440000006
4.4939942359999998 1.8605788950000000 15.9529504780000000
1.7888138290000000 6.1113057140000002 14.3224687579999994
3.6412923340000001 6.5103812220000004 16.0714683530000002
0.2660501300000000 4.0368237499999999 14.8530282969999998
12.2670373920000007 1.7934968469999999 15.9780263900000001
12.1632499690000007 6.4622840879999996 15.6813344959999998
4.2590804100000001 3.6639482980000002 8.3699073790000007
2.3283817770000002 4.1193470950000002 6.5889697070000004
1.8417201040000000 2.6803727149999999 8.7811574940000003
2.2190251349999999 5.3263187409999997 8.8851575850000000
6.2604050640000004 4.0844135279999998 6.6351628299999996
6.6854267119999999 2.7927670480000000 8.9004669189999994
6.1843366619999998 5.4273214340000004 8.8914918899999993
4.3113536830000001 8.8443317409999995 8.5499286649999995
2.1413111690000002 10.3548173899999991 8.2125873570000003
1.9441152810000000 7.9517598150000000 9.2953510280000007
6.4775996210000004 10.3806381230000007 8.2527093889999996
6.6635308269999998 7.9965653420000002 9.3763866419999999
4.3045191760000003 11.8580894469999993 8.0257034300000001
2.1952300070000001 0.0791062490000000 9.3621330260000004
6.3987464899999997 0.1566936520000000 9.2821531299999993
8.7454805370000006 8.2422380450000006 22.1718482970000004
10.1183853149999994 8.2093296050000006 19.8397617339999996
10.8710966110000005 9.7904424670000001 21.8511371610000005
11.1080360410000001 7.1131076809999998 21.9849643710000002
7.2960004810000001 9.3493461609999997 20.3893260960000013
6.3347020150000004 9.4095935819999994 22.7755241390000016
6.4508934020000002 7.0204577449999999 21.7703647609999997
8.4423456189999992 3.5974988940000001 21.6774520869999989
10.5922632219999997 2.0622048380000000 21.4813289639999994
10.7551593780000001 4.5220928190000000 22.5128841400000006
6.3401441570000001 1.9861364360000000 21.6320495609999988
6.1183934210000004 4.4680476190000000 22.5194835660000017
8.4872779850000004 0.4122384790000000 21.4522933960000017
10.7866745000000002 12.3436117169999999 22.5867939000000000
6.2238264079999999 12.0828781129999996 22.3492298130000009
8.3212175370000008 8.5108203889999992 25.0088901519999993
8.7842102050000008 10.5434074399999993 0.2655437590000000
9.9033432010000002 10.4734144209999993 24.2537002559999983
7.3053674700000002 10.9939966200000008 24.5691337589999996
8.5341091159999998 6.3622937200000003 0.1042641920000000
9.9115695949999996 6.4243135450000004 24.2592430109999988
7.2525877950000002 6.2231936450000003 24.1911411289999982
3.8678524489999999 8.4860115050000005 24.7576007840000010
2.1634609700000000 10.4901218410000006 24.9339256290000009
4.6352462770000002 10.9477987290000005 24.0562591549999993
2.2697799210000000 6.3488774299999999 24.7760772709999983
4.6482830049999997 6.2573676110000003 23.6392021180000000
0.5184307100000000 8.3526067729999998 24.7737007140000003
12.4911928180000000 10.7061767579999998 23.7503299709999993
12.4963817600000002 5.9280323980000000 23.8717498779999993
4.4104580880000004 4.1571912769999999 11.6741590500000001
4.2018704409999996 2.0967583660000000 13.3619203570000007
3.0661580559999999 1.9699355359999999 11.0126752850000003
5.7157745359999996 1.8769063950000000 11.2077417369999992
4.2751545909999997 6.1778812409999997 13.4572086330000005
3.1645030980000000 6.4306416510000002 11.0918636320000008
5.8005766870000004 6.4039354319999999 11.3394575119999992
8.7159891129999991 3.8288688660000001 11.4326362610000007
10.6844062809999993 2.0194242000000000 11.4669504169999996
8.2633752820000002 1.4141665699999999 10.5491619110000006
10.6994686130000005 5.5506005289999996 10.9234571460000005
8.2550220490000008 6.2199025150000002 10.4105825420000002
0.0070879200000000 3.8560814859999999 11.5561685559999994

0.4837505220000000 1.4237858059999999 10.7468671800000006
0.5408335920000000 6.3043251040000001 10.7078018190000002
8.3483037949999999 4.4031171799999997 18.0910263059999998
10.3238086700000000 4.1899728779999998 19.9057521820000005
10.4020280839999995 2.6891059880000001 17.7317771909999990
10.7749032969999998 5.3137879369999999 17.5939903260000001
6.4717769619999999 4.0792245859999996 19.9450817110000003
6.3298916820000004 2.7496066090000002 17.7130355829999999
5.8281683920000003 5.3249263759999996 17.6684265140000001
8.3118515009999996 8.8088922499999995 17.9619503020000018
10.4587316510000008 10.3688669200000003 18.3486518859999990
10.7008600230000006 7.9564433100000000 17.2582321169999986
6.3938097950000001 10.5980854030000007 18.2422752380000013
5.9030981059999998 7.9727706910000000 18.7606925959999984
8.5241098399999995 12.2110939030000001 18.2763271329999988
10.9494438170000006 0.1018888500000000 17.3809738160000009
6.2349648479999997 0.2433941070000000 17.0808506010000016
4.3614754680000001 8.4679126740000008 4.8637266160000001
2.4897584920000000 8.1473102569999991 6.7309799190000001
1.9567720890000000 9.5781841280000002 4.5810256000000003
2.2291507720000001 6.9373016359999999 4.4189543720000000
6.1871209140000003 8.1624994280000003 6.7872033119999999
6.7147917750000001 9.6522283550000001 4.6734118459999996
6.5586042400000002 6.9967894550000000 4.4767613409999996
4.3217325210000004 3.6643280979999999 4.8766613010000004
2.2497818469999999 1.9781624080000000 5.0384683609999996
1.9579112530000000 4.3490715030000002 3.9681107999999998
6.3595094679999997 1.9593034979999999 5.0133924480000003
6.7192215920000002 4.3900804520000003 4.0383238790000000
4.2866725920000004 0.2754163150000000 5.1680727009999998
1.9453808070000000 12.2147636409999993 4.1272783280000001
6.5363278390000001 12.2032461170000008 3.9828922750000002
12.5853605270000006 10.3835487369999999 26.3711872099999987
0.1925129590000000 6.2855925560000001 0.0475128000000000
12.5730838780000003 1.8785519600000000 13.3281326290000006
12.1184434890000006 5.9205646510000003 13.1196031570000002
2.1424503330000002 12.5834617610000006 6.7227969170000001
6.4576015470000003 12.5109376910000005 6.6343708039999996
10.5808715820000003 12.4963817600000002 19.9627666469999987
6.4182376860000003 0.1106221820000000 19.7806339260000001
7.0088133810000004 5.5804710389999999 14.6677284239999999
3.9731588360000001 9.1807546620000000 17.1571369169999990
2.0385363100000000 9.5174312590000003 20.3074989320000014
3.2408246990000000 7.5814166070000004 18.5439834589999997
0.5628567930000000 8.5629663469999997 18.1913318629999985
2.4730510710000000 9.3830137249999996 14.5304698939999994
0.1446695030000000 10.0378866200000001 15.7394065859999994
4.4584283830000002 9.8581571579999991 1.6893440490000000
4.3679304119999998 6.6460638049999998 1.4919018749999999
9.2523937230000008 9.9882707600000007 1.7202272420000000
9.1420240400000008 6.7773170470000004 1.5578919650000000
12.3101978299999999 9.9342260360000001 1.5122268200000000
12.2723531720000008 6.7359290119999997 1.4969171290000001
6.8881921769999996 10.7123785020000000 3.4473178390000001
8.5556259160000003 2.3048396109999998 14.6672019959999993
8.6024570469999997 5.4452943800000000 14.4676475520000007
3.5599079130000000 2.5264635090000001 14.7965412139999994
3.3310689930000001 5.7308363910000004 14.7081155779999992
0.4686886970000000 2.4262201790000000 14.7624912259999999
0.2613670230000000 5.6216063500000004 14.5019617079999996
6.0361232759999996 1.7537537809999999 16.4819259639999984
2.6626529689999998 3.9498701100000000 8.1666584009999994
5.8494324679999998 3.9988522529999999 8.2038764949999994
2.7264442440000001 8.8343324659999993 8.1859273909999999
5.9062623980000000 8.8554697040000008 8.2315931320000004
2.6904983520000001 11.8813781740000000 8.0806074139999993
5.9195518490000003 11.8950481410000002 8.0433893199999993
1.9784157280000001 6.4863328930000002 9.9908866879999998
10.2139453889999992 8.3553915019999998 21.4567794800000016
7.1818346980000003 8.4813289639999994 21.7621822360000010

10.0344696039999999 3.5934488770000002 21.3929004670000005
6.8417410849999998 3.5252273079999998 21.4192981720000013
10.1059808730000000 0.5124819280000000 21.3675613400000017
6.8718647959999997 0.4822316770000000 21.3063220979999990
11.0385484700000003 5.9856214520000002 23.1635456089999998
8.5735988620000008 10.1172466280000002 25.1113071440000013
8.5146169660000002 6.8912301060000001 24.9592647549999995
3.7240691180000001 10.0664911270000008 25.0719776150000015
3.8044409749999999 6.8716115950000001 24.8716316219999989
0.6244963410000000 9.9682731629999992 24.9587383269999989
0.7092982530000000 6.7450413700000000 24.9708805080000005
6.1343412400000004 10.8840074540000007 23.4348964690000017
4.3578047750000000 2.5368425850000000 11.8056116099999997
4.4134955409999996 5.7727308270000002 11.8921899799999995
9.0908899309999995 2.2621855740000001 11.6575288770000007
9.1705026630000006 5.3903632159999999 11.4521684649999997
12.2499504090000002 2.2939546110000002 11.7844943999999998
12.1754007340000001 5.4111204150000001 11.5730619340000008
6.7471933359999996 1.5731384749999999 9.9790077210000003
9.9343519209999993 4.1323838229999996 18.3283271789999986
6.7347898480000001 4.1978206629999999 18.3423175809999996
9.8924570079999992 8.8497734070000007 18.3652820589999983
6.9478068349999997 9.1759443279999999 18.8137493129999989
10.1142082210000002 11.9511194229999997 18.5062351229999997
6.9027476310000004 12.1440114969999993 18.3565692899999995
10.7455396650000008 6.5013947490000001 16.4922218319999985
2.7639091009999999 8.2804622650000006 5.1382451060000003
5.9525866509999998 8.3134975430000004 5.1902456280000004
2.7230269909999998 3.5232024190000000 5.1258392329999998
5.9166412350000002 3.5181396010000001 5.1451082230000003
2.6727786060000001 0.4360336070000000 5.2696976659999999
5.9055027960000004 0.4105930630000000 5.2018599510000003
1.9286736250000001 5.8163976670000004 3.2815506459999999
1.9877817630000001 10.7498426439999992 3.4473178390000001
6.8117437360000004 5.8580393790000000 3.3449010850000001
10.8107233049999998 1.5417491200000000 16.6463718410000006
1.9032330510000000 1.5547858480000001 9.9644899369999997
6.7163105009999997 6.4982299799999996 9.9966926570000005
11.0039958949999992 10.8240127560000001 23.1155052189999992
6.1280131339999997 6.0053663249999998 23.0307750700000007
5.1381092070000003 7.1089301110000003 17.1740283970000007
7.1391806600000001 8.1843957899999999 16.0659255979999998
6.6753020290000000 6.5019006729999997 14.8818016049999997
3.9772088530000000 11.2592868799999994 16.9385757450000014
1.2329183820000000 10.9995660780000009 17.1542320249999989
2.4568502900000002 11.4090194700000005 15.0913858409999992
4.7357430459999996 10.2930517199999993 15.6496610640000000
2.7664403919999998 10.8986892700000002 18.9069271090000015
3.9537932869999999 9.8249959950000001 19.6919441219999989
1.1695067880000001 9.3341569900000003 19.8920249939999998
2.4724183080000000 6.9946379660000000 18.3871898649999999
12.3895568849999993 8.4414587020000003 17.6771373750000009
3.0760304930000002 9.5914745329999995 13.7958698270000006
1.7159094810000000 8.0337772370000007 16.5355091089999995
0.3537631330000000 9.5156593320000002 14.9369688029999992
2.8988325599999998 8.9049587250000002 18.0738677979999984
1.6027557850000000 8.8547105790000007 17.2682628630000004
1.3598680500000000 10.1467370989999992 16.4671440119999986
2.5574734210000001 10.4011430740000002 15.5374784469999998
3.8654477599999999 10.3574752809999993 16.3161602019999989
2.9379427429999998 9.8671436309999994 19.2738323210000004

β-furanose-2@Sn

CONTCAR

O Si Sn H C

1.0000000000000000
12.6569995879999997 0.0000000000000000 0.0000000000000000
0.0000000000000000 12.6569995879999997 0.0000000000000000
0.0000000000000000 0.0000000000000000 26.3959999084000003
135 63 1 14 6

Cartesian

4.245917320000002 8.373618126000002 1.6098920109999999
4.2793312070000002 10.5154352190000004 0.0258680810000000
3.3454978469999999 10.7245292659999993 2.4532442090000002
5.9341077799999997 10.3882322309999999 2.0430502890000000
4.4412145609999998 6.4489941599999998 26.1901111600000007
2.9970510010000000 6.0842194559999996 1.9878827330000000
5.6580586430000004 6.1435809140000002 2.0924108029999999
8.9988737109999999 8.3980464940000008 1.6352320910000000
10.7975597380000004 10.3755760190000004 1.8506236080000000
8.4084243769999993 10.7082014080000008 2.8087983130000000
10.6785840990000001 6.3471059800000003 1.4121860270000000
8.2867908480000008 6.0047340389999997 2.4817519190000001
12.4620819090000001 8.3512153629999997 1.4235363009999999
0.6741117840000000 10.6168184280000002 2.4492847919999998
0.3871776160000000 6.0237193109999998 2.4978535179999999
9.2046766279999996 3.9286060329999999 14.5843172069999998
8.7083959580000005 1.8147605659999999 13.0422639849999999
9.6451406479999999 1.5065625910000000 15.4960346219999998
7.1150054930000000 2.2558569909999999 15.0913858409999992
9.0878524780000003 6.0370087620000001 12.9145069120000002
9.3468151089999996 6.4487414359999997 15.4735994340000005
6.3460927009999999 7.6455869669999998 15.5232238769999995
3.4489057060000001 4.2783188819999998 14.8488054280000004
2.0282840730000000 2.1099219320000002 14.6801357269999997
4.5075373650000001 2.0152473450000001 15.7304315569999993
1.7561587100000000 6.3110332490000003 14.3380432130000006
3.7124242779999999 6.6654286379999999 15.9302501680000006
0.2475709170000000 4.1690888399999997 14.5909175869999999
12.2989330290000005 1.8944997790000000 15.7190818790000009
12.0342750550000002 6.5693621640000002 15.4432439800000001
4.2789521219999997 3.7381181720000001 8.2065162659999995
2.3474936490000000 4.2321209910000004 6.4255781169999997
1.8458968400000000 2.7998549939999999 8.6006088260000002
2.2888917919999998 5.4528884890000002 8.7130556109999997
6.2643289570000000 4.1952891350000003 6.4802179339999997
6.7236514090000004 2.8914916520000000 8.7288932799999994
6.1914248470000004 5.5197176929999996 8.7521219250000009
4.3421101569999996 8.9667243960000000 8.4490957259999995
2.1677641870000000 10.4559469220000008 8.0362625120000004
1.9612020250000000 8.0717487339999998 9.1541328429999993
6.5075964930000003 10.4777173999999995 8.0592269900000009
6.7222590450000004 8.0946578979999995 9.1860723499999999
4.3269219400000001 11.9587125780000001 7.8625769620000003
2.2195312980000002 0.1963100730000000 9.1895036700000006
6.4322872159999998 0.2552916710000000 9.1021327969999994
8.6271371840000004 8.4088039400000003 21.8165588379999988
10.0763635639999993 8.4558877940000006 19.5916385650000002
10.7697143549999996 9.9291629790000009 21.7421207430000010
10.9813394550000005 7.2328424450000002 21.7307720179999997
6.9304661750000003 9.3555479049999999 20.0435390469999994
6.3241963390000002 9.5743875500000009 22.5572280879999987
6.3133115770000003 7.1741142269999996 21.5779380799999991
8.5055036540000000 3.9373395439999999 21.5420398710000001
10.5408754350000002 2.1856107709999999 21.4222011569999999
10.8589468000000000 4.6520800590000002 22.3806400299999986
6.5688557620000001 2.1332106590000000 21.8228931430000017
6.0385279660000002 4.6463847160000000 22.2056350709999997
8.5732183460000009 0.3919872640000000 21.4712982180000012
10.9091939930000006 12.4714479449999995 22.5482540130000011
6.2191433910000002 12.2460269929999992 22.3347129819999992
8.3071680069999996 8.5985326769999997 24.8072242739999993
8.7620611190000002 10.5759353639999993 0.1586399670000000
9.8505630489999998 10.6296014789999997 24.1454772949999992
7.2309441569999997 11.0423469539999992 24.5055179599999988
8.5004405980000008 6.4319076539999998 26.2806491850000015
9.9511861800000005 6.5751848219999998 24.0826549529999987
7.3134675030000000 6.2978696820000000 23.9166240690000009
3.8520312309999998 8.5699281690000007 24.6894989010000003
2.1492850780000001 10.6068191530000000 24.8159351350000001

4.5874028210000004 11.0108299259999995 23.8952426910000000
2.2842087750000002 6.4045681950000004 24.6227169040000007
4.6724576950000003 6.3435616489999997 23.5542068479999998
0.5801968570000000 8.4428520200000001 24.8154067990000016
12.4582853320000009 10.6906080249999995 23.6568870539999985
12.5316953659999992 6.1752238269999999 23.6262683869999996
4.3960289960000001 4.3061642649999996 11.4173259740000006
4.2283239359999998 2.3272426130000001 13.1702842709999999
2.9973039629999998 2.1086561680000000 10.8738317490000007
5.6491985319999998 1.9860098360000000 10.9833755489999998
4.2257924080000002 6.2554688450000002 13.3009443279999999
2.9388287069999999 6.4917750359999999 11.0533246989999991
5.6070508959999996 6.6355586049999999 11.1005735399999992
8.6357440949999997 3.9151895049999998 11.4038639069999999
10.6560544969999995 2.1666250229999999 11.2465438839999994
8.2213544850000009 1.5118786099999999 10.4591512679999994
10.6122617720000001 5.6143918040000003 10.7949085240000002
8.1435136799999999 6.3093876839999998 10.4087343220000008
12.6502914430000004 3.9769558909999998 11.3325948719999996
0.4360336070000000 1.5335221290000001 10.5019121169999998
0.3928732570000000 6.3935570720000001 10.3348264689999993
8.4501924509999995 4.4264059070000004 18.0044479369999993
10.4573402400000006 4.2727499010000001 19.7801074979999996
10.6194763180000002 2.9631302360000000 17.4987010960000013
10.7755365370000007 5.6275553699999996 17.5726089479999992
6.5488576890000001 3.7905180449999998 19.7418327329999990
6.0727019310000001 3.5728178019999999 17.1597747799999993
6.2420525549999999 5.9652438160000001 18.2665596010000009
8.1803445820000000 8.9150838849999996 17.7547416690000013
10.1747083660000008 10.6501064299999992 18.1153106689999994
10.6152992249999993 8.2181892399999992 17.0029830930000010
6.7320051190000001 11.1313247680000007 18.0593509670000003
5.4598498339999999 8.9290075299999998 17.8972797389999992
8.6644754410000004 0.2378250060000000 18.3050975800000018
11.1075296399999992 0.3319931030000000 17.3622341159999998
6.3295121190000003 0.9209232930000000 17.2421302800000014
4.3664116860000002 8.3289384840000000 4.6409444810000000
2.5738008020000001 8.2066717150000006 6.6121978759999998
2.0762541290000001 9.7084255220000006 4.5250663759999998
2.0668878560000001 7.0590620040000003 4.2927818300000000
6.1418089870000001 8.2366685870000005 6.6304116249999998
6.5929045679999998 9.7761402129999997 4.5480308530000002
6.7141585350000001 7.1196889880000001 4.3215532300000001
4.3251500130000000 3.7803926470000002 4.7082543369999996
2.2714252469999998 2.0771403309999998 4.8721737860000003
1.9468995330000001 4.4486823080000004 3.8184452059999998
6.3435616489999997 2.0603063110000002 4.8573918340000004
6.7274484630000000 4.4856410029999996 3.8957855700000001
4.2905964850000000 0.3414858580000000 4.9653515820000003
1.9139914510000000 12.3141212459999991 3.9675827030000002
6.5750579829999998 12.3152608870000009 3.8121101860000000
12.6014356610000000 10.5279655460000008 26.3009738919999982
0.1818810850000000 6.2507858279999997 26.2558364869999998
12.5644769669999992 1.9939836259999999 13.0858173369999999
12.2217254640000004 6.0972566600000002 12.8593397140000008
2.1656126979999999 0.0318956410000000 6.5578222269999999
6.4634232520000001 12.6095352169999995 6.4569892879999999
10.6925067899999995 12.5819435120000005 19.9392738340000015
6.4845604899999998 0.4171747270000000 19.8292026519999993
7.0304565429999997 5.3980836869999997 14.5294141769999996
3.3972651960000002 7.2732181550000004 18.5426616670000008
2.1991536620000001 7.4429488179999996 21.8579998019999984
0.2617467340000000 8.6687784190000006 19.6935272220000002
1.2064652440000001 7.0861477849999996 17.7003669740000014
3.0447678570000001 10.2628021240000002 17.9938888550000016
3.0529949670000001 4.4133691790000000 20.89797782899999985
4.4498214720000000 9.9840946200000005 1.5394147629999999
4.3428697590000001 6.7655458450000001 1.3876377339999999
9.2383441929999996 10.0061178210000001 1.6046128270000000
9.1221523280000003 6.8031377900000001 1.3475158210000000

12.2974138259999997 9.9644765849999999 1.4016276599999999
12.2442550659999991 6.7485857009999997 1.2923481459999999
6.8680677409999999 10.7994585040000004 3.3108503819999999
8.6446046830000007 2.3866038320000000 14.5629377370000004
8.6363773350000006 5.4547872540000002 14.3749971389999995
3.5502881999999998 2.6812589170000001 14.6009473799999991
3.3128430839999998 5.8684177399999999 14.5888061520000001
0.4717263580000000 2.5558278560000001 14.5067129139999995
0.2258008720000000 5.7664027210000004 14.3029365540000004
6.0216941830000001 2.1947236060000002 16.2947788240000015
2.6885998249999998 4.0596060749999996 8.0016841890000006
5.8668990140000004 4.0955519679999997 8.0523633960000005
2.7649214270000000 8.9397649769999994 8.0526275629999997
5.9252476690000000 8.9573583600000006 8.0734806060000004
2.7134075160000002 11.9857988360000007 7.9161601069999996
5.9414486889999996 11.9923801420000000 7.8704953189999998
1.9086755510000000 6.5897402759999997 9.8058500290000001
10.1455974579999992 8.5266408919999996 21.2142009740000006
7.0528597829999997 8.6286563869999995 21.4773693080000001
10.0990200039999998 3.7445733550000000 21.2741203309999998
6.9336309429999998 3.6268630030000000 21.3100185390000014
10.1807842250000000 0.6012074950000000 21.3316631319999992
6.9713487629999999 0.6267746090000000 21.3638668060000008
11.0558891300000006 6.1602883339999996 22.9560737609999990
8.5396776200000009 10.2014150620000006 24.9938430790000012
8.5257549289999996 6.9875502589999998 24.7517929079999988
3.7005269529999998 10.1625576019999997 24.9508190160000005
3.8095037939999998 6.9569201469999999 24.7787170410000002
0.6237369180000000 10.0607957839999997 24.8951225280000017
0.7263852360000000 6.8323750499999996 24.8373146059999996
6.1035852430000004 10.9820985790000005 23.3285217289999984
4.3242640500000000 2.6893591880000001 11.5970830920000001
4.2994561200000003 5.9058828349999999 11.7163925169999992
9.0738029480000009 2.3526830670000001 11.5503616329999996
9.1087360380000000 5.4730134010000002 11.3911933899999998
12.2265348429999996 2.4154617790000001 11.5503616329999996
12.1341390610000008 5.5227551459999997 11.3362903589999995
6.7388396259999999 1.6738880869999999 9.8140325550000007
10.0638332370000008 4.3108472820000001 18.2045307160000007
6.8449049000000004 4.4556436540000002 18.2797584529999995
9.7817087170000008 9.0739297870000009 18.1153106689999994
6.8333873750000000 9.5708427430000000 18.4399814609999986
10.1576213840000005 12.2447614670000000 18.4407749179999989
7.0531134609999997 0.0246811490000000 18.3602657319999985
10.6889629359999994 6.7103619580000000 16.3583927150000008
2.7760596280000001 8.3240022660000008 5.0104889869999996
5.9518275259999998 8.3613405230000009 5.0287022590000001
2.7297351360000000 3.6258506769999999 4.9658794400000001
5.9146161079999997 3.6201550960000000 4.9964990619999998
2.6787273880000000 0.5294423100000000 5.0968036650000004
5.9086670879999996 0.5052673820000000 5.0273818969999997
1.8666542770000001 5.9200582500000003 3.1493067739999998
1.9971480370000001 10.8242654799999993 3.3422613139999999
6.8328809740000001 5.9466381070000001 3.1994590760000001
10.9061574940000003 1.7013537880000000 16.5109615329999997
1.8857663870000001 1.6684455869999999 9.7797174449999993
6.6580882069999996 6.6196107860000000 9.8594331739999994
10.9876680370000006 10.9171686169999997 23.0233821869999993
6.1094074249999997 6.1433281900000001 22.8404579159999983
5.1907620430000003 7.1518378260000004 17.0969543460000004
7.2068958280000004 7.9907436369999996 15.8376007080000001
6.6526460649999999 6.3069825169999998 14.7746324540000007
4.1644058230000001 6.8163003919999996 20.4167785640000012
1.1969724890000000 6.3407773970000001 20.4120273589999996
2.1923189160000001 9.1916399000000002 20.0390510560000017
2.3024346830000000 4.7839660640000004 19.0354747770000010
2.2414281370000002 6.6069540980000001 22.3608436580000003
12.4392995830000004 7.9554300309999997 19.2263183590000004
1.3349337580000000 7.0475440029999996 16.7316322329999991
1.2994941470000001 9.5997009280000007 17.1980495449999999

2.7379620079999998 8.9179954529999996 16.4037952420000011
3.9899923799999999 9.9920682910000007 17.9991683960000017
4.0804901119999997 4.6467642780000000 19.0782356260000014
3.9199993609999999 4.4033703800000001 21.3490848540000009
3.2791752820000002 6.5437951090000004 19.8239250180000006
2.0055017469999998 7.0898184779999998 20.4991340639999997
1.6288293599999999 8.3184337619999997 19.6782188419999997
2.1187818049999998 7.9798583980000002 18.2633934019999984
3.2019677160000000 5.0324230190000003 19.6190910340000002
2.3176231380000001 9.2217636110000001 17.3833484650000010

β-pyranose-2@Sn

CONTCAR

O Si Sn H C

1.0000000000000000
12.6569995879999997 0.0000000000000000 0.0000000000000000
0.0000000000000000 12.6569995879999997 0.0000000000000000
0.0000000000000000 0.0000000000000000 26.3959999084000003

135 63 1 14 6

Cartesian

4.7828268999999999 8.3423547740000004 1.4047951700000001
4.3297061919999997 10.5393571850000001 26.3181304930000017
3.0910925869999999 10.2133131030000008 2.1829490659999999
5.7343802449999997 10.7111129760000008 2.0945227150000001
4.4428601260000002 6.3855824470000000 26.0515308380000015
3.0640065669999998 6.3464732169999998 1.9197809699999999
5.6962823870000001 5.9215774540000004 1.9496084450000000
9.0334272379999998 8.3548851010000007 1.4919018749999999
10.7393379210000006 10.3791189189999997 1.7344812150000000
8.3221035000000008 10.5849218369999996 2.7140367030000001
10.7280721660000005 6.3082485200000002 1.3630894419999999
8.3274202349999999 5.9861283299999997 2.4088990689999998
12.4598035809999992 8.3481769559999996 1.4676175119999999
0.5252654550000000 10.6625089650000007 2.5601480010000000
0.4778017100000000 5.9656233790000002 2.3777515889999998
9.1132926940000001 3.9588563440000000 14.5748157500000008
8.7313051220000002 1.8720967770000001 12.9538373950000008
9.5300884250000006 1.5107394460000001 15.4445638659999993
7.0262804030000003 2.2545914649999999 14.9377593990000008
9.1297464369999997 6.0491600040000000 12.8941812519999992
9.2884654999999992 6.4877247809999998 15.4572334290000004
6.1873741149999999 7.8124065399999996 15.2772121429999999
3.2524690629999999 4.0801105499999997 14.2543678279999995
1.9470263720000001 1.9276610610000000 14.7075872420000007
4.4500746729999996 2.0490417480000001 15.6251125339999994
1.8124822380000001 6.2986292840000004 14.4710788729999997
4.0003714559999999 5.8462681769999998 15.9682607650000001
0.2963003520000000 4.1366872790000002 14.5463075639999992
12.1743879320000001 1.9069035050000001 15.6145534519999991
11.9745349880000003 6.5039258000000002 15.3756694790000008
4.2499670979999999 3.7926700119999999 8.1223125459999999
2.3940715789999998 4.1926312450000003 6.2386946679999999
1.7922310829999999 2.8545331950000001 8.4385366439999991
2.2354793549999998 5.5111107830000003 8.4834108350000008
6.3004012109999996 4.2427525519999998 6.4736189839999998
6.6183447839999996 2.7546694280000001 8.6362428670000000
6.2539501189999998 5.4085888860000004 8.8136243820000004
4.3784360890000000 8.9405250550000002 8.2767295839999999
2.2126967909999999 10.4562006000000007 7.9839978220000001
2.0820763109999998 8.0803546910000001 9.1947822570000000
6.5584774020000003 10.4038009640000002 7.9747595789999997
6.6941604610000001 8.0155515669999993 9.1163864140000008
4.3913459780000004 11.9417524339999996 7.8089923859999999
2.2271256450000001 0.2585825030000000 8.9825582500000003
6.5056977270000003 0.1236588880000000 9.1372394559999996
8.6584005360000003 8.4296884540000008 21.7793388370000010
10.1676206590000007 8.5237293239999996 19.5478210449999992
10.8321132660000004 9.9114427569999997 21.7276039119999993
10.9980468750000000 7.2163887019999997 21.6360092160000015
7.0142564770000000 9.3831396100000006 19.9981365199999992

6.2858457569999997 9.4923706049999996 22.4846401210000018
6.4169726369999998 7.1024756430000000 21.4852886199999986
8.4348773959999992 3.8460824489999998 21.4464855189999994
10.5146751399999996 2.1646001340000001 21.3464450839999991
10.7789545059999998 4.6391701699999999 22.3159713750000002
6.4493737219999998 2.0896706580000002 21.6550140380000009
6.0328321459999996 4.5923395160000000 22.2262229920000003
8.5049972530000009 0.4094539280000000 21.3263835909999990
10.8097105029999998 12.4596767429999993 22.4817371369999996
6.1878805159999999 12.1704645159999991 22.1641941070000001
8.2428712839999996 8.5695488606999998 24.7713260650000002
8.6653614040000004 10.5692272190000001 0.0831473990000000
9.8066434860000005 10.5837831500000004 24.0905742650000008
7.1923398970000001 11.0234880450000006 24.3796081539999996
8.5542325970000004 6.3630533219999998 26.2022533419999988
9.9165058140000006 6.6030302049999996 23.9733753199999988
7.2649908070000002 6.2706570629999998 23.9063301089999989
3.8224136830000002 8.5735988620000008 24.6464729310000017
2.1463739870000000 10.6177034379999995 24.7385959630000016
4.5534820560000000 10.9858961110000006 23.7622070309999991
2.2658560280000000 6.4372234339999999 24.4891529080000012
4.6475238799999996 6.4524116520000003 23.3747138979999995
0.5475417970000001 8.4785442349999993 24.6770935059999985
12.4074029919999997 10.8123683929999999 23.7139015200000003
12.5016984939999993 6.1656041149999998 23.5473442079999984
4.5687971120000004 4.1837711329999996 11.5841484070000007
4.0755538939999996 1.9398117070000001 13.0237865450000001
3.0824856760000001 2.1915595529999998 10.6191110609999999
5.7004594800000001 1.8691856860000000 10.9749288560000000
4.1808600430000000 6.2917943000000003 13.2661008830000000
3.0414769650000002 6.2395210270000003 10.8957405089999995
5.6669182779999998 6.5678434369999996 11.1206350329999992
8.7288995599999993 3.9573376179999999 11.3112134930000003
10.7001008990000006 2.1523227690000000 11.1536293030000007
8.2702102659999994 1.5545326470000000 10.3628053670000000
10.6903553010000003 5.7061552999999998 10.7996587749999993
8.2075576780000006 6.3630533219999998 10.3868255620000003
0.0154415390000000 3.9844233990000002 11.2571020130000008
0.5021032090000001 1.5583298210000001 10.4132213589999996
0.4742577970000000 6.3931775090000000 10.2857294079999999
8.3719730380000001 4.4775400159999998 17.9872894290000005
10.4069643020000004 4.2626242640000003 19.7215080259999986
10.5164480210000004 2.9760403630000001 17.4313907619999995
10.7236423490000004 5.6294536590000002 17.5348625180000006
6.4258322720000001 3.8992419240000000 19.6853446960000014
6.0868778230000000 3.4718151090000000 17.1215000149999987
6.1277599330000001 5.9796729089999996 18.0585594180000015
8.2290754320000001 8.8671140669999993 17.7093410489999989
10.1812906269999992 10.6560544969999995 18.0089340210000017
10.6828880309999992 8.2136335369999998 16.9573173520000005
6.7321310040000002 11.0531044010000006 17.9326496119999987
5.5108575819999999 8.8006649019999994 17.9244670870000000
8.6138477330000001 0.2116250400000000 18.2116546630000009
11.0558891300000006 0.3638887410000000 17.2941303250000011
6.2805299760000004 0.8184015750000000 17.0497035980000007
4.3117337229999997 8.2751464840000004 4.6483354569999999
2.4763419629999999 8.1642704009999996 6.5995278360000000
2.0495479109999999 9.6939964290000002 4.5311374659999997
2.0142350200000001 7.0262804030000003 4.2679691310000001
6.2229404449999999 8.1685743330000005 6.5221877099999999
6.4767131810000000 9.7920875550000002 4.4728021619999998
6.6530256269999999 7.1565203669999997 4.1151366229999997
4.4553904529999997 3.6574931140000002 4.6464877130000000
2.3595178130000001 2.0208165650000001 4.6826500890000000
2.1815605159999998 4.4442524910000003 3.6120285989999998
6.5775899889999998 2.0877721309999999 4.9194226260000002
6.8333873750000000 4.5017151830000000 3.9008009430000001
4.4788055419999999 0.4290722910000000 4.9254937170000002
2.2715518470000000 12.2295722960000006 3.7302827839999999
6.7994666099999996 12.3579139710000003 3.8678059579999999

0.0332879090000000 10.4972095490000008 26.3363437649999987
0.1974491920000000 6.3257150649999998 26.1711063390000014
12.5901708600000006 1.9889209269999999 12.9958066940000005
12.3823423389999991 6.0999145510000004 12.8305673599999999
2.2864868640000000 12.5894117360000006 6.3548369410000003
6.5799942020000000 12.6135864259999995 6.4939441679999996
10.6530160899999995 12.5510606770000006 19.8624610900000000
6.4089980129999997 0.3727486430000000 19.6660766600000017
6.9875502589999998 5.4889612200000002 14.4320135119999993
3.1901969910000001 7.5261049270000004 18.2369976039999990
3.5633249280000001 8.6742210390000007 15.8837938310000002
1.1120439769999999 7.7887372969999999 17.3255424500000004
0.7065137030000000 10.1411676409999991 18.7324485779999996
3.4962430000000002 8.0411186220000008 21.1410846710000015
1.0464807750000000 9.1341762539999998 21.4185047150000010
4.4862732889999997 9.9427061079999994 1.4190489049999999
4.4890580179999997 6.7478260990000001 1.2506425379999999
9.1905002590000002 9.9675130840000001 1.5003485679999999
9.1702499389999996 6.7561798099999999 1.2641044859999999
12.2715940480000008 9.9624509809999999 1.4203687910000000
12.2852630620000003 6.7470669750000001 1.2414038180000000
6.8311090470000000 10.8478078839999998 3.2860379219999998
8.5777500199999992 2.4126772879999998 14.4795255659999995
8.5984058379999997 5.5004787449999997 14.3398904799999993
3.4516901970000000 2.4935555460000001 14.4240942000000008
3.3237280849999999 5.6732468610000000 14.5204401020000002
0.4432481530000000 2.5183632370000000 14.4499616619999998
0.2940220830000000 5.7500748630000000 14.3161344530000001
5.9760022160000004 2.1646001340000001 16.1820678710000010
2.6687283520000000 4.0922613139999999 7.8375000950000002
5.8580393790000000 4.0549225809999996 8.0272874830000003
2.7811226840000001 8.9269819259999998 8.0072269439999992
5.9673957819999996 8.8868589399999998 7.9665765759999996
2.7741611000000002 11.9754199979999996 7.7849726680000000
6.0092902180000003 11.9317541120000001 7.8554496770000002
1.9777827260000000 6.5431628230000003 9.7150478360000001
10.1687603000000006 8.5355005259999999 21.1688003539999983
7.0815911290000004 8.5967607499999996 21.4008216860000005
10.0335826870000009 3.7168545719999999 21.2015323639999984
6.8435130119999998 3.6069917679999999 21.2197437290000011
10.1171197890000002 0.5894364710000000 21.2427082059999996
6.8967990879999999 0.5956383940000000 21.2010021209999984
11.0252590179999999 6.1482639309999998 22.8697586060000013
8.4770250320000002 10.1759748460000008 24.9178237920000001
8.5043640140000001 6.9655265809999998 24.6934585569999996
3.6995143890000000 10.1748352050000008 24.8726863860000016
3.7946949010000002 6.9576787949999996 24.6718120570000004
0.6142442230000000 10.0896539690000004 24.8737430569999987
0.7109436990000000 6.8645238879999999 24.7275085449999992
6.0732078549999997 10.9364070889999994 23.1952209469999993
4.3542609209999998 2.5679786210000000 11.5485143659999991
4.3678040500000002 5.7996902470000000 11.7245759960000004
9.1241779330000004 2.3858444689999998 11.4595594409999997
9.1811342239999991 5.5203504560000001 11.3597822189999995
12.2684297559999997 2.4209041600000001 11.4616708759999995
12.2188148499999993 5.5476894379999999 11.3117418290000007
6.7584581379999999 1.5923770669999999 9.7733831410000001
9.9783992769999994 4.3255295750000000 18.1525287629999994
6.7464342119999996 4.4975380899999999 18.1913318629999985
9.8203125000000000 9.0712718960000007 18.0532798770000014
6.8612327579999999 9.5003433229999992 18.3824386599999983
10.1139554979999993 12.2436218260000000 18.3507633209999987
7.0046367649999999 12.6186485289999997 18.2071685790000011
10.6636486050000006 6.6947937010000000 16.3056011199999986
2.7184703350000001 8.2862844469999999 5.0049457549999996
5.9157552720000002 8.3391914370000002 4.9384274479999997
2.8445341590000002 3.5697801110000000 4.8056559559999998
6.0380215640000001 3.6162314410000000 4.9951786990000002
2.8555457590000000 0.4922307130000000 4.9342041019999998
6.0952315329999998 0.5458964110000000 5.0590572360000001

1.9547470810000001 5.9489164350000001 3.0500576499999998
1.9855034350000000 10.7065563200000007 3.2583222390000000
6.8609795570000003 5.9049968719999999 3.0962507719999999
10.8057861329999998 1.7233771090000001 16.4367885590000000
1.9076629880000000 1.7194533350000001 9.6113119129999998
6.6947937010000000 6.5725269319999997 9.8596982959999995
10.9583034519999991 10.9261550900000000 23.0020027159999998
6.1271271709999997 6.1116857529999997 22.7636451720000004
5.0801396370000003 7.2009463309999999 16.8662528989999991
7.0380516049999997 8.1760416029999998 15.5944919590000008
6.5853104589999996 6.4005179410000004 14.5911798479999995
1.9672775270000000 5.9679017070000002 18.9063987729999994
0.4002143140000000 7.8432893750000003 19.9759655000000009
2.0128426550000000 6.5649323460000000 21.2691040039999990
3.6896417140000000 5.9527134899999998 19.4295673370000017
3.5277588369999999 10.1423072810000008 17.3725280759999983
2.0339796539999999 10.0190277099999996 16.3628807069999986
4.1270680430000004 9.2535324100000000 15.3326435090000004
0.3138935860000000 8.3565301900000009 17.3867797850000017
0.3059196770000000 10.5006265639999992 19.5496692659999987
3.9501230719999998 7.4767427440000001 21.7970256810000009
2.6489834790000000 9.8660049440000002 19.4786643979999994
1.9243702890000001 9.3402328489999995 21.8062648770000003
2.1921923159999999 8.4976558690000008 17.8740520479999994
1.7755237820000001 9.2823905940000007 19.1331405640000014
1.3337945940000000 8.3504552840000006 20.2634162899999986
2.4134366510000000 7.3101768490000003 20.5572051999999985
2.8032722470000002 6.5829052929999996 19.2756786349999985
2.8369398119999998 9.4581956859999998 16.8607082370000008

References

1. Gaussian 09, Revision E.01, M. J. Frisch, G. W. Trucks, H. B. Schlegel, G. E. Scuseria, M. A. Robb, J. R. Cheeseman, G. Scalmani, V. Barone, B. Mennucci, G. A. Petersson, H. Nakatsuji, M. Caricato, X. Li, H. P. Hratchian, A. F. Izmaylov, J. Bloino, G. Zheng, J. L. Sonnenberg, M. Hada, M. Ehara, K. Toyota, R. Fukuda, J. Hasegawa, M. Ishida, T. Nakajima, Y. Honda, O. Kitao, H. Nakai, T. Vreven, J. A. Montgomery, Jr., J. E. Peralta, F. Ogliaro, M. Bearpark, J. J. Heyd, E. Brothers, K. N. Kudin, V. N. Staroverov, R. Kobayashi, J. Normand, K. Raghavachari, A. Rendell, J. C. Burant, S. S. Iyengar, J. Tomasi, M. Cossi, N. Rega, J. M. Millam, M. Klene, J. E. Knox, J. B. Cross, V. Bakken, C. Adamo, J. Jaramillo, R. Gomperts, R. E. Stratmann, O. Yazyev, A. J. Austin, R. Cammi, C. Pomelli, J. W. Ochterski, R. L. Martin, K. Morokuma, V. G. Zakrzewski, G. A. Voth, P. Salvador, J. J. Dannenberg, S. Dapprich, A. D. Daniels, Ö. Farkas, J. B. Foresman, J. V. Ortiz, J. Cioslowski, and D. J. Fox, Gaussian, Inc., Wallingford CT, 2009.
2. W. N. van der Graaff, C. H. Tempelman, G. Li, B. Mezari, N. Kosinov, E. A. Pidko and E. J. Hensen, *ChemSusChem*, 2016, **9**, 3145-3149.
3. T. Barclay, M. Ginic-Markovic, M. R. Johnston, P. Cooper and N. Petrovsky, *Carbohydr Res*, 2012, **347**, 136-141.

Author Contributions

Wang Liu, carrying out experiments, writing of original draft, synthesis of Sn-Beta catalyst; main equal contributor

Zhimin Zhou, contributions for the DFT calculations; main equal contributor

Zhaohui Guo, contributions for the analysis of NMR data; supporting the contribution

Zhangqian Wei, contributions for the DFT calculation; supporting the contribution

Yanfei Zhang, synthesis of Sn-Beta catalyst; supporting the contribution

Xinpeng Zhao, characteristics of the catalyst; supporting the contribution

Gai Miao, characteristics of the catalyst; supporting the contribution

Lijun Zhu, characteristics of the catalyst; supporting the contribution

Hu Luo, contributions for the analysis of data; supporting the contribution

Mengya Sun, contributions for the analysis of data; supporting the contribution

Yingxiong Wang*, modifying the analysis and presentation of manuscript; supporting the contribution

Shenggang Li*, modifying the analysis and presentation of manuscript; supporting the contribution

Lingzhao Kong*, supplying the general research idea and design of experiments; leading contributor