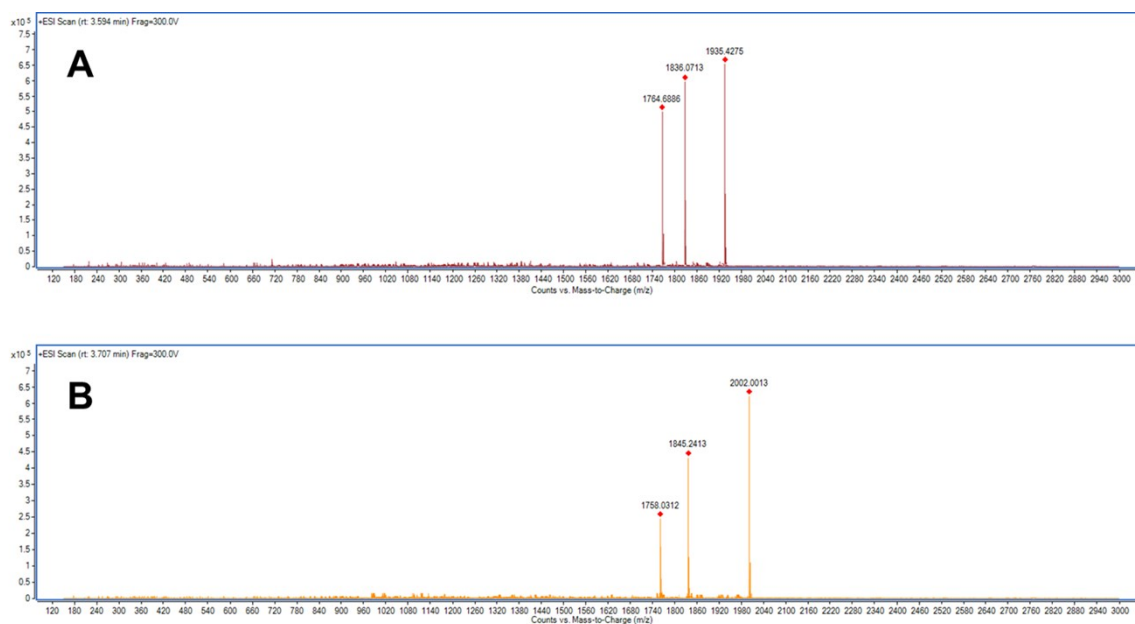


### Supporting Information For

## Role of Functionalized Self-Assembled Peptide Hydrogel on In Vitro Vasculogenesis



**Figure S1.** Ionization mass spectra of A) KLD-V1, and B) KLD-V2



**Figure S2.** Liquid chromatography spectra of A) KLD-V1, and B) KLD-V2

**Supplementary Table S1.** Sequences, observed and calculated molecular weight of synthesized peptides

Name	Sequence	Calculated	Observed
KLD-V1	KLDLKLDLKLDL-IKVAV	1936,45	1935,42
KLD-V2	KLDLKLDLKLDL-YIGSR	2002,43	2002,00