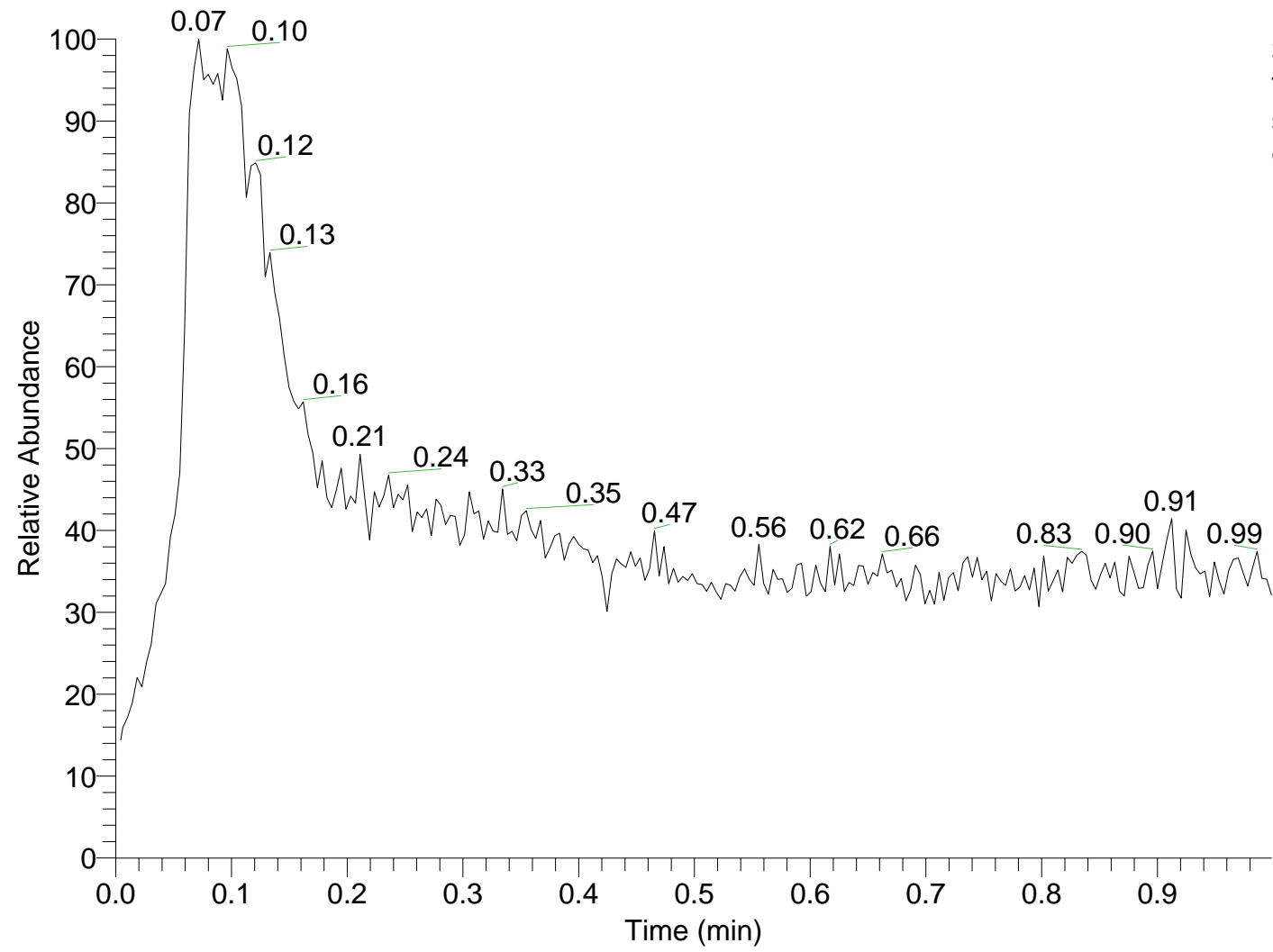
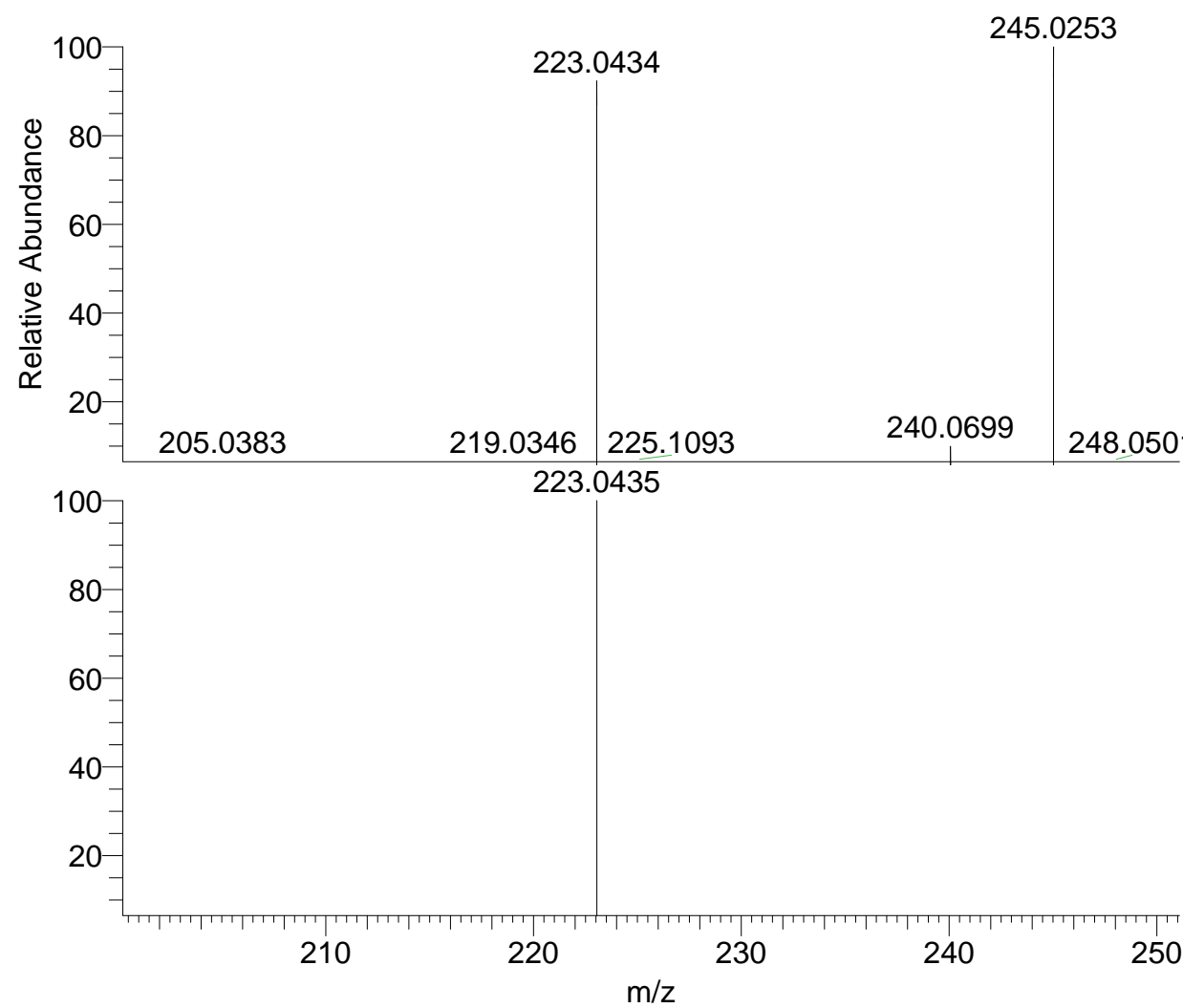


RT: 0.00 - 1.00



NL:
3.27E7
TIC MS
shihongliang
g-12



NL:
3.76E6
shihongliang-12#22
RT: 0.09 AV: 1 T:
FTMS + p ESI Full
ms
[120.00-2000.00]

NL:
9.18E5
 $C_4H_2N_{10}O_2 + H$:
 $C_4H_3N_{10}O_2$
pa Chrg 1