

## ***Supporting Information***

### ***A Turn-on Fluorescent Probe for Lipid Droplets Specific Imaging of Fatty***

#### ***Liver and Atherosclerosis***

Shufen Li,<sup>a</sup> Weihua Zhuang,<sup>a,b</sup> Jingruo Chen,<sup>a</sup> Gaocan li,<sup>b</sup> Changming Li,<sup>ac</sup> Li Chen,<sup>ac</sup> Yanbiao Liao,<sup>ac\*</sup> Mao Chen,<sup>ac\*</sup> and Yunbing Wang<sup>b\*</sup>

<sup>a</sup> Laboratory of Heart Valve Disease, West China Hospital, Sichuan University, 37 Guoxue Road, Chengdu 610041, PR China. E-mail: liaoyanbiao@foxmail.com and hmaochen@vip.sina.com.

<sup>b</sup> National Engineering Research Center for Biomaterials, Sichuan University, 29 Wangjiang Road, Chengdu 610064, PR China. E-mail: yunbing.wang@scu.edu.cn.

<sup>c</sup> Department of Cardiology, West China Hospital, Sichuan University, 37 Guoxue Road, Chengdu 610041, PR China.

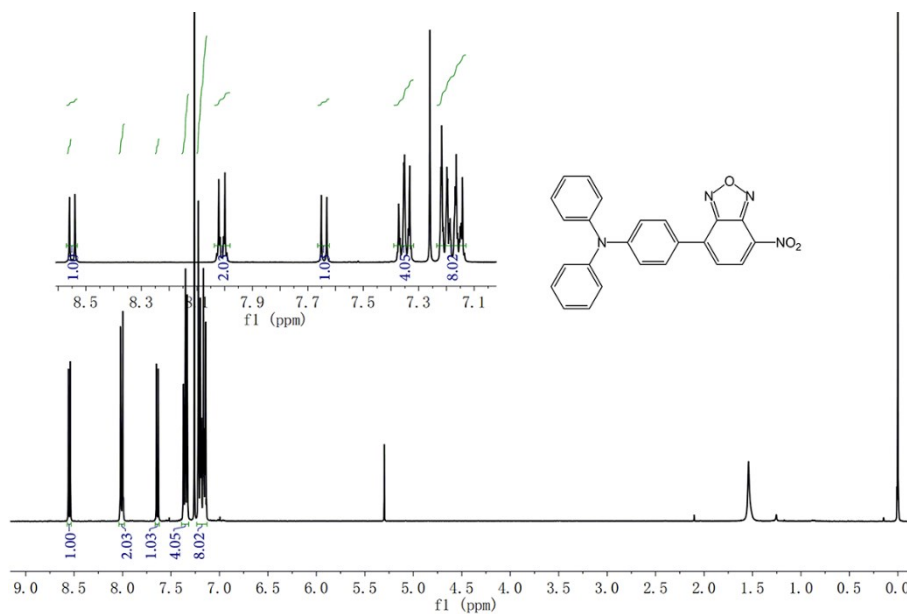


Fig. S1  $^1\text{H}$  NMR of **TNBD** in  $\text{CDCl}_3$ .

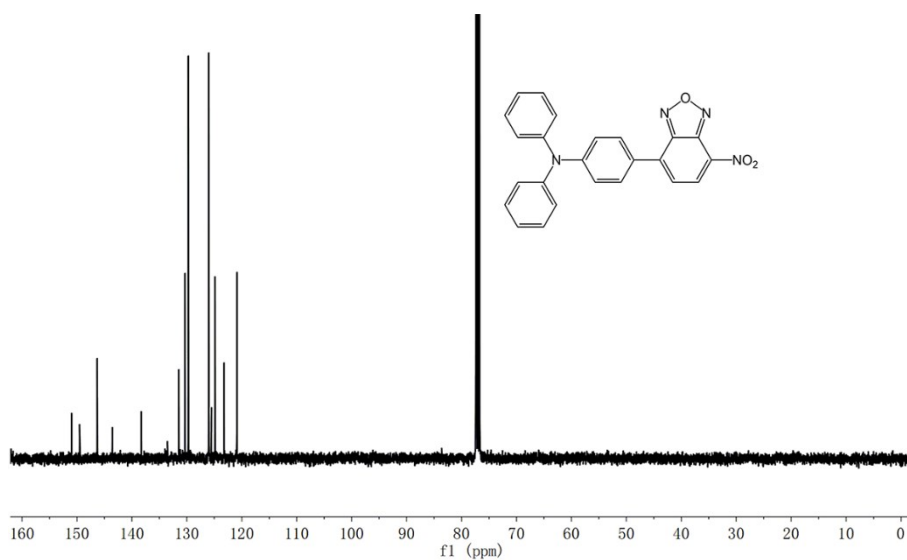


Fig. S2  $^{13}\text{C}$  NMR of **TNBD** in  $\text{CDCl}_3$ .

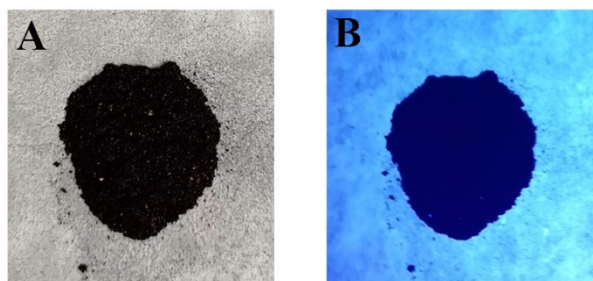


Fig. S3 Photographs of **TNBD** in solid state under white light (A) and under UV light (365 nm) (B).

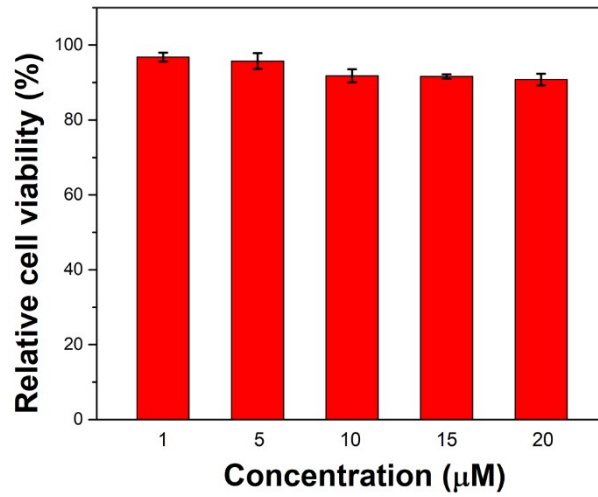


Fig. S4 Relative cell viability of HeLa cells co-cultured with different concentrations of **TNBD** for 24 h.

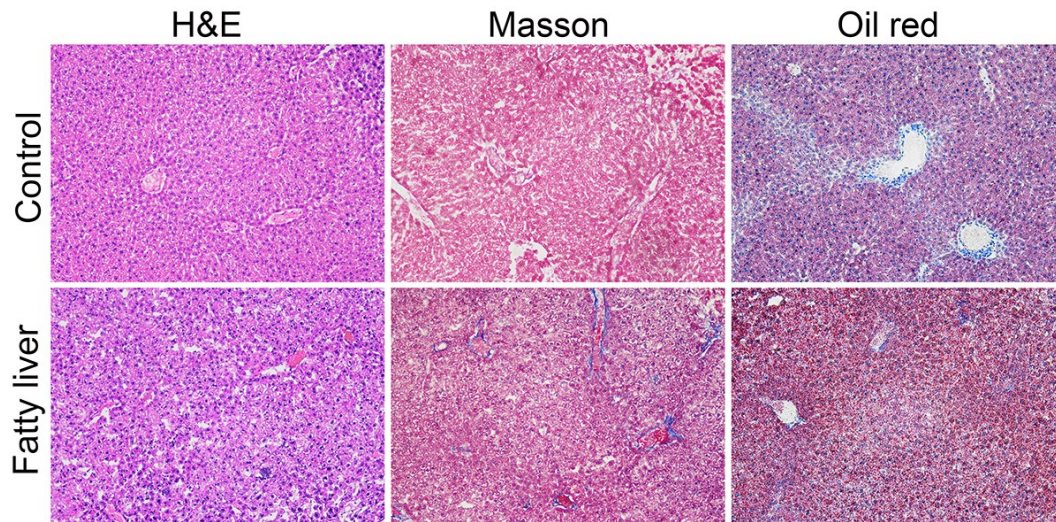


Fig. S5 Representative images of H&E, masson and Oil Red O staining of hepatic tissues of normal mice and fatty liver model mice (100×).

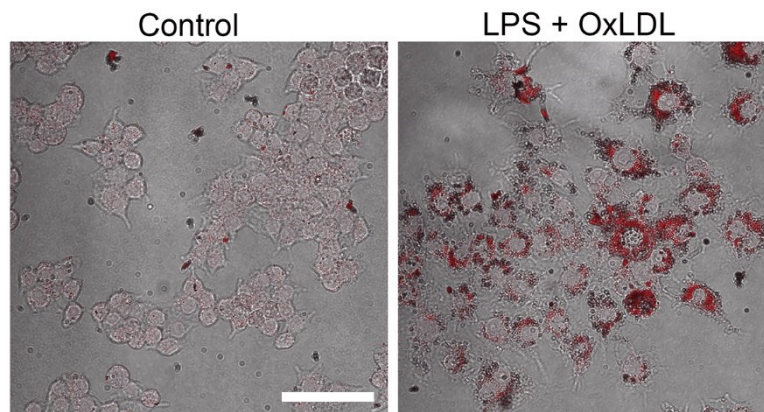


Fig. S6 Images of Oil Red O stained RAW 264.7 cells and foam cells. Scale bar: 50 µm.

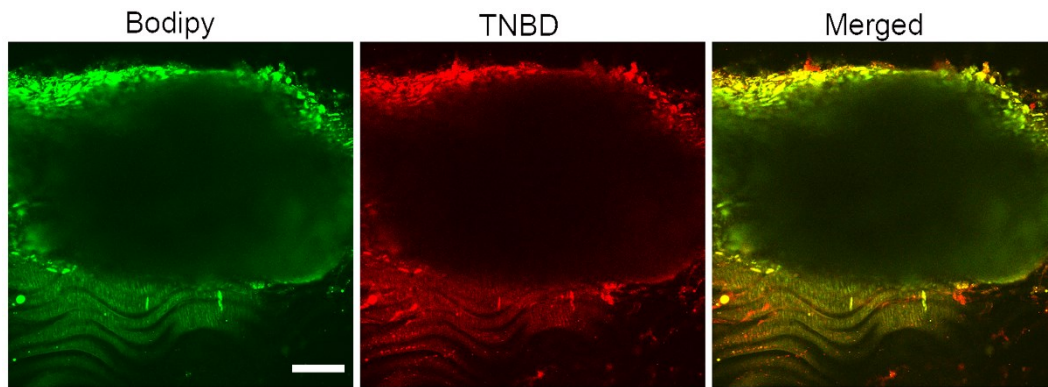


Fig. S7 Slices of views (z-stack) of the AS plaque at imaging depths of 75 μm. Scale bar: 100 μm.