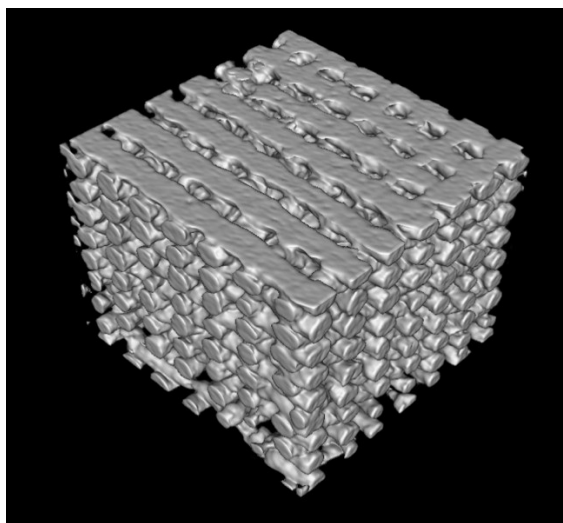
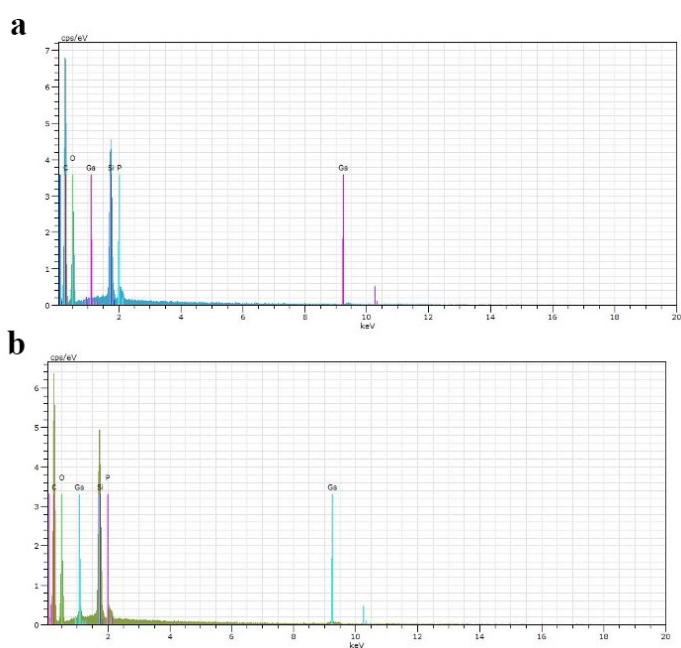


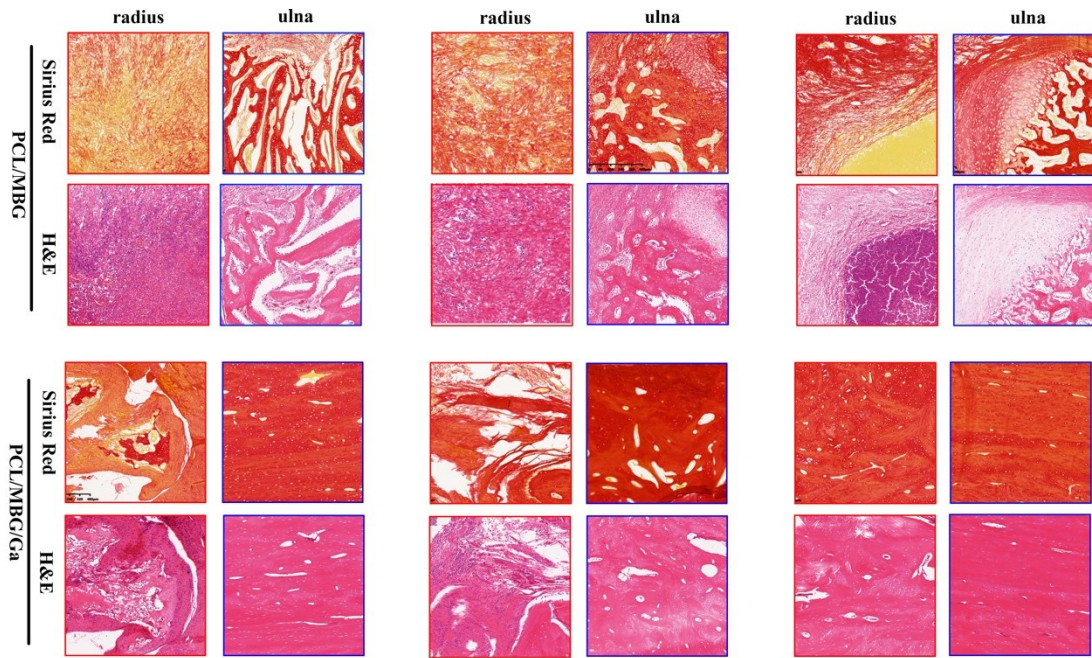
**Supporting materials:**



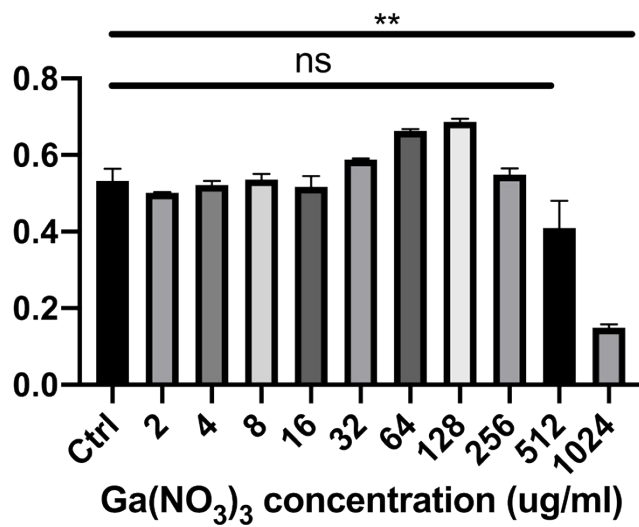
**Figure S1** Micro-computed tomography image of rebuilt poly-ε-caprolactone/mesoporous bioactive glasses scaffold.



**Figure S2** EDS mapping results of (a) PCL/MBG and (b) PCL/MBG/Ga groups.



**Figure S3** Histologic staining of the tissue within the bone defect site on the radius and the tissue near the bone defect site on the ulna, including Sirius Red and Hematoxylin and Eosin staining.



**Figure S4** Cytotoxicity of Ga(NO<sub>3</sub>)<sub>3</sub> at different concentrations. ns means p>0.05 while \*\* represents p<0.01.

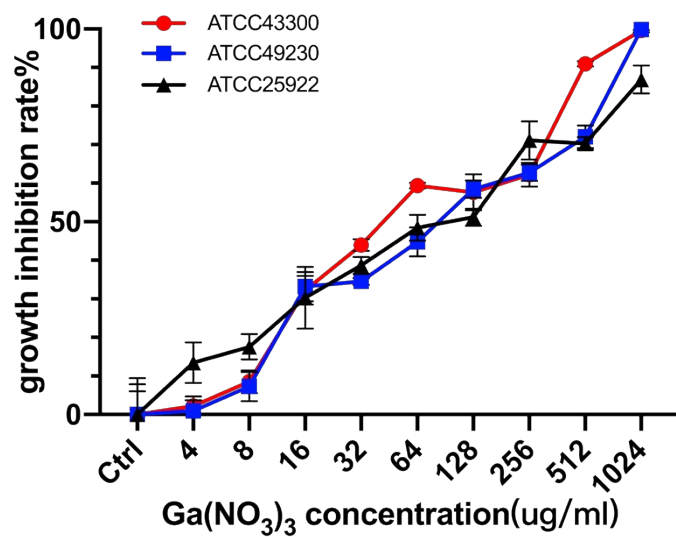


Figure S5 Antibacterial efficiency of Ga(NO<sub>3</sub>)<sub>3</sub> at different concentrations.