

Supplementary Information

Immediate soft-tissue adhesion and mechanical properties of Ti-6Al-4V alloy after long-term acid treatment

Yaming Wang,^a Masahiro Okada,^{*a} Shi Chao Xie,^a Yu Yang Jiao,^a Emilio Satoshi Hara,^a
Hiroaki Yanagimoto,^b Takumi Fukumoto^b and Takuya Matsumoto^{*a}

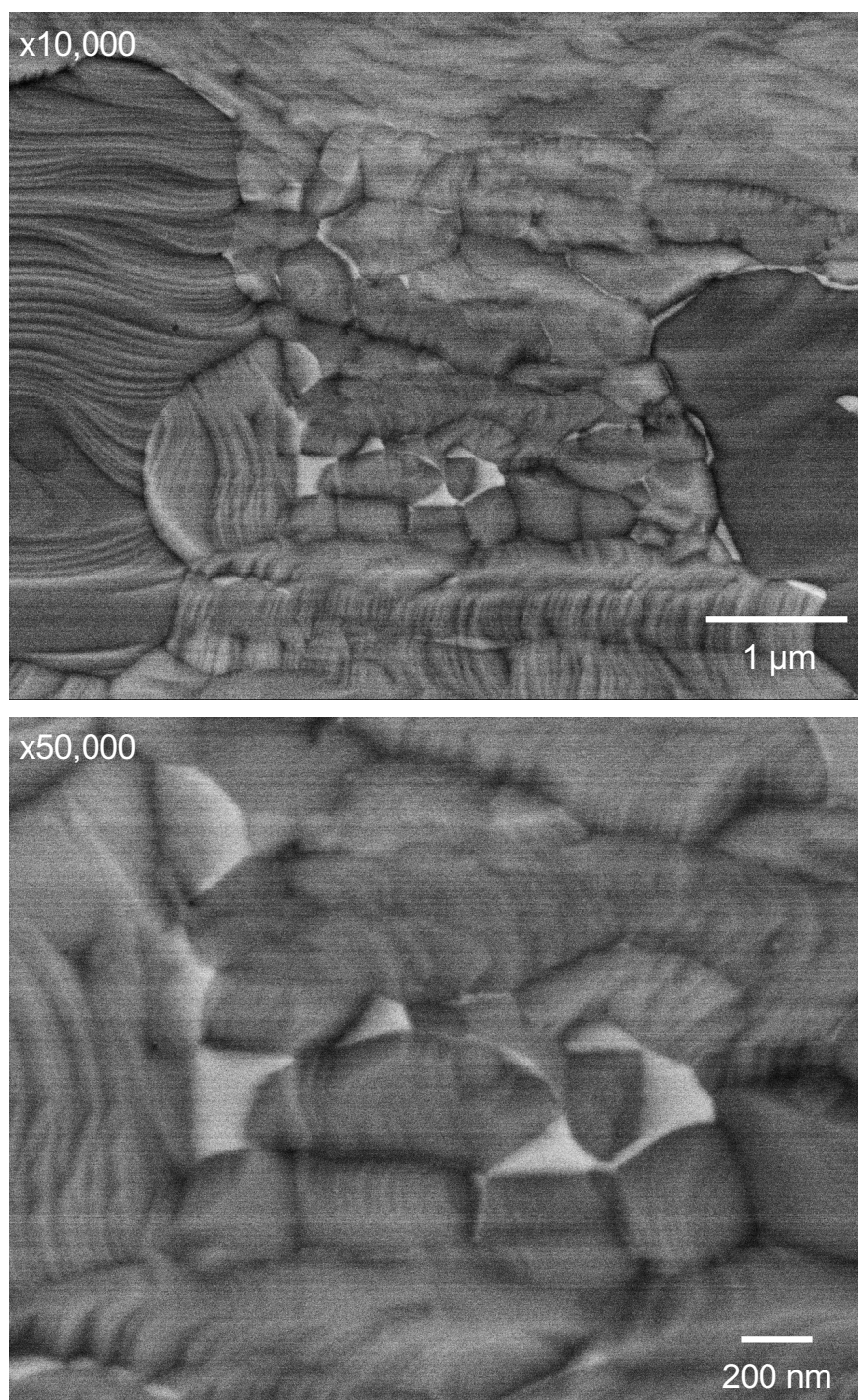


Figure S1. Backscattered electron (BSE) images of the non-treated Ti-6Al-4V film used in this study