

S1

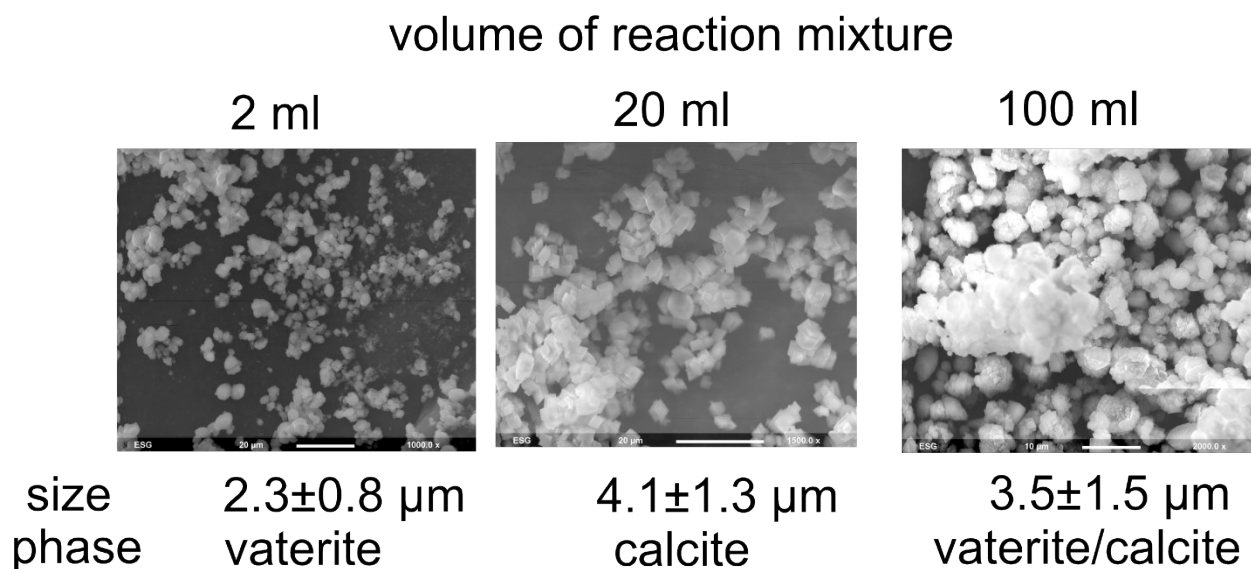


Figure S1 SEM images, average size and shape of the calcium carbonate particles prepared from various volume of reaction mixture, 1M  $\text{CaCl}_2$ , 1M  $\text{Na}_2\text{CO}_3$ , 30 min, 700 rpm, RT.

Typical samples

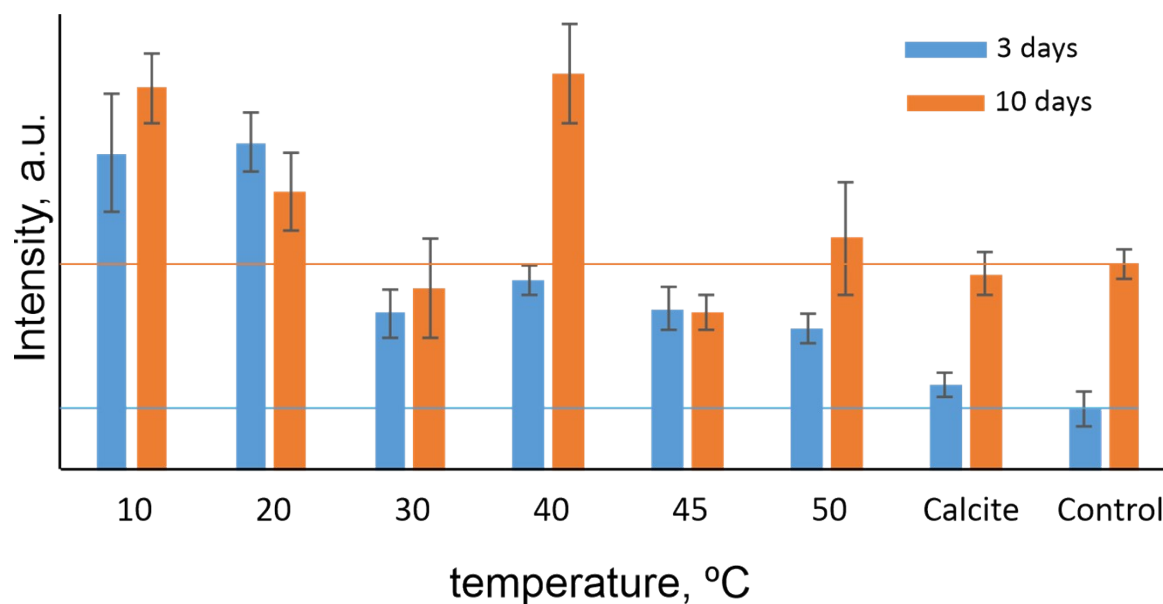


Figure S2 Hydroxyapatite deposition for samples obtained at different temperature, calcite samples and control cell on plastic surface.. Initial data for the figure 7b.