

Supplementary Information

The Influences of Surface Charge on the Tumor Targeting of Fe₃O₄ Nanoparticles for MRI

Saisai Yue^{a, ‡}, Xin Zhang^{b, ‡}, Yuping Xu^{a, ‡}, Lichong Zhu^a, Junwei Cheng^a, Yuanyuan Qiao^a, Suyang Dai^a, Jialin Zhu^c, Ni Jiang^a, Hao Wu^{d, *}, Peisen Zhang^{a, *}, and Yi Hou^{a, e, *}

^a College of Life Science and Technology, Beijing University of Chemical Technology, Beijing, 100029, China. Email: houyi@iccas.ac.cn; zhangps@iccas.ac.cn

^b Department of Engineering and Transformation Center, Beijing Children's Hospital, Capital Medical University, National Center for Children's Health, Beijing, 100045, China

^c Department of Diagnostic and Therapeutic Ultrasonography, Tianjin Medical University Cancer Institute and Hospital, National Clinical Research Center of Cancer, Key Laboratory of Cancer Prevention and Therapy, Tianjin's Clinical Research Center for Cancer, Tianjin, China

^d The Second Affiliated Hospital of Inner Mongolia Medical University, Hohhot 010030, China. Email: 76649347@qq.com

^e Department of Nanomedicine & International Joint Cancer Institute, Naval Medical University, Shanghai 200433, China

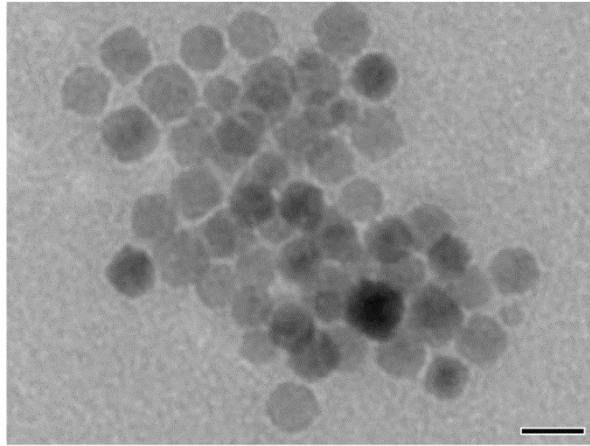


Figure S1 The TEM image of OA-capped NP. (The embedded scale bars correspond to 20 (nm))

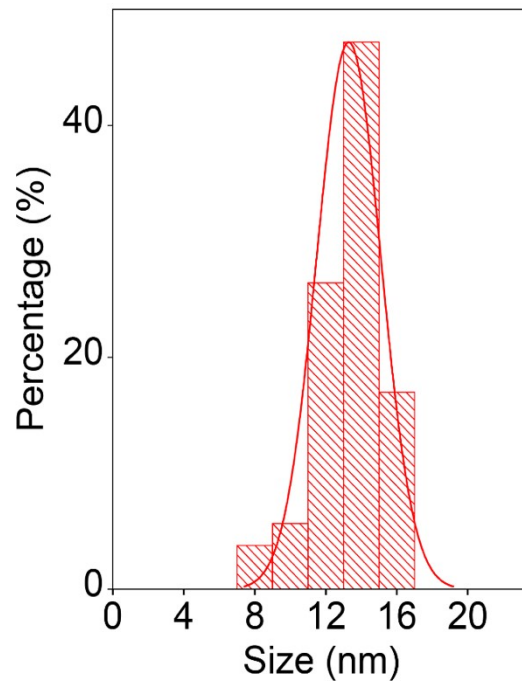


Figure S2 Histogram showing the particle size distribution profile of OA-capped NP.

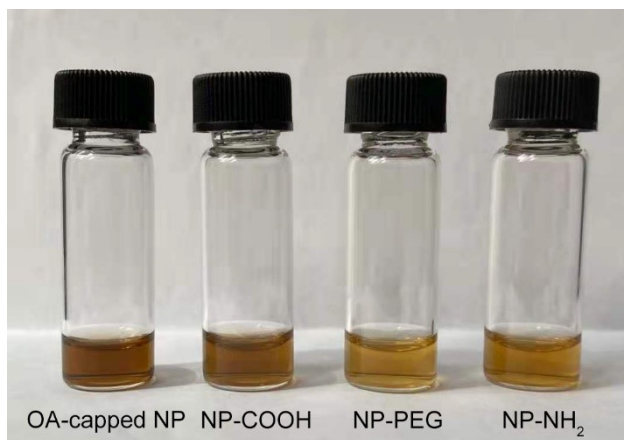


Figure S3 Photographs of various solutions with 0.32 mg/mL Fe³⁺ concentration.

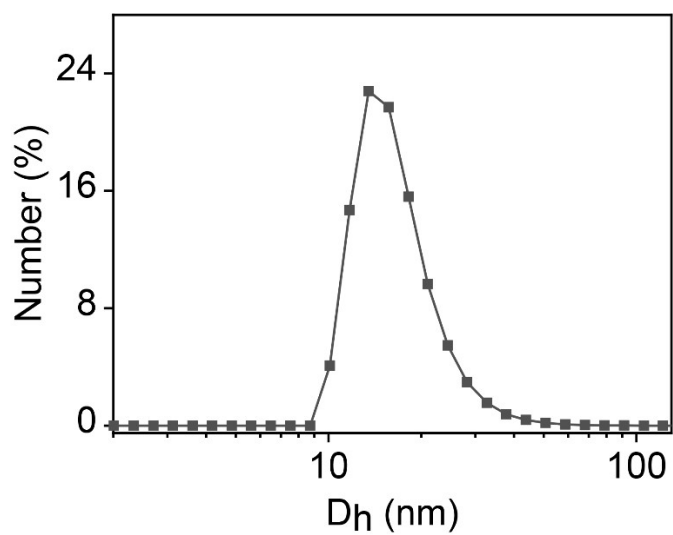


Figure S4 Hydrodynamic size distribution profiles of OA-capped NP

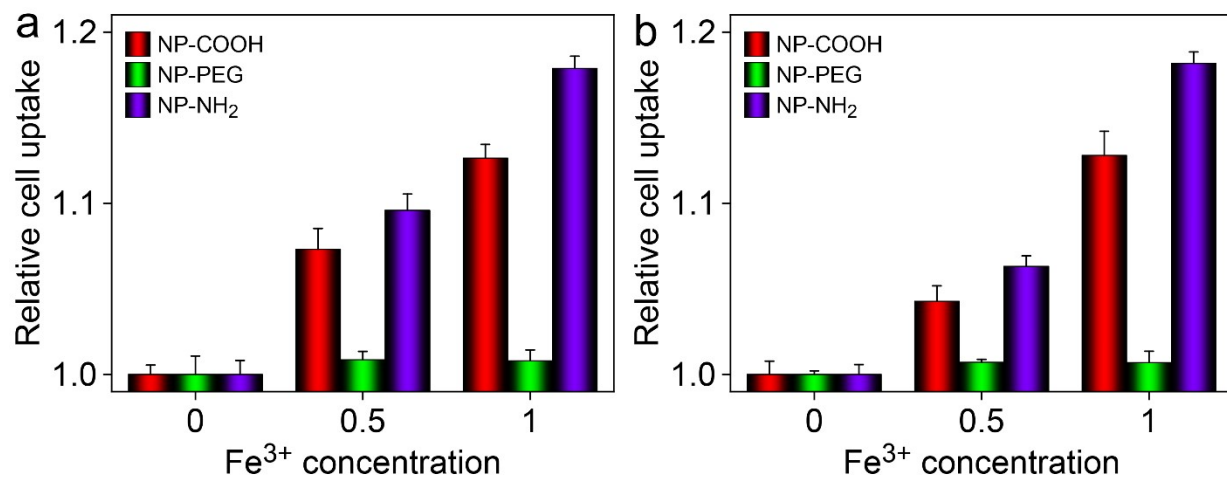


Figure S5 Fe contents in a) 4T1 cells and b) SCC-9 cells after incubation with different nanoparticles for 4 h.

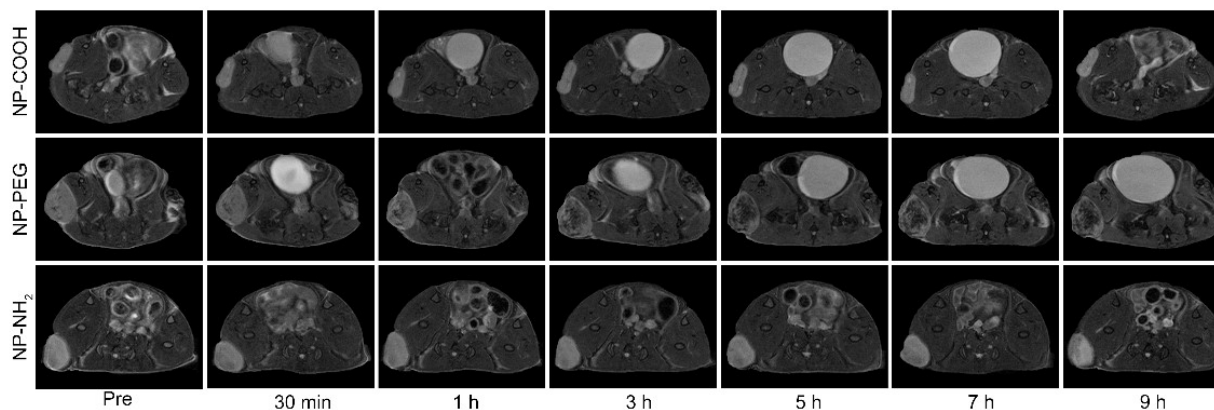


Figure S6 T₂-weighted MR images of tumor-bearing mice acquired at different time points pre- and post-injection of NP-COOH, NP-PEG, and NP-NH₂, respectively.

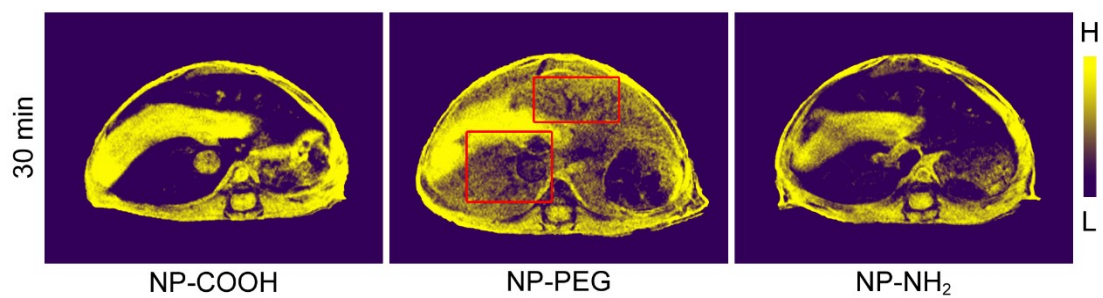


Figure S7 T_2^* -weighted with images with pseudocolor for showing the hepatic vessels received at 30 min postinjection of three nanoparticles. The hepatic vessels depicted by the NP-PEG nanoparticles were highlighted by the red frame.

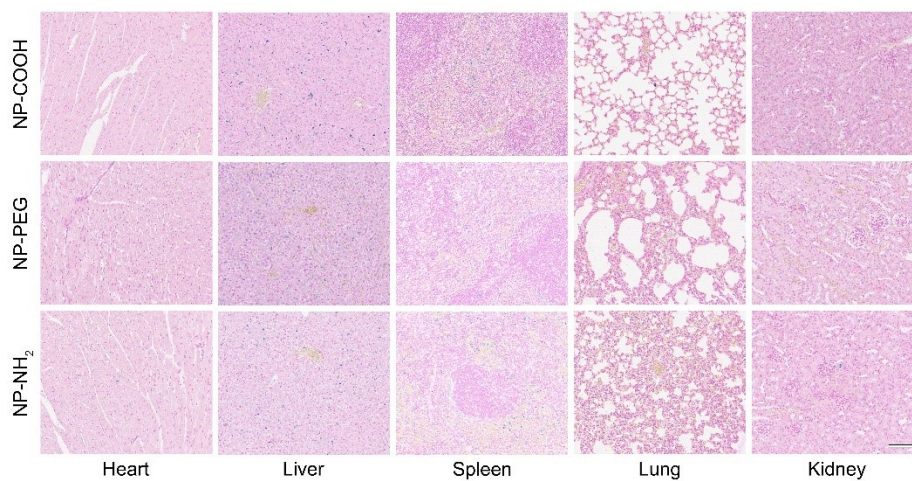


Figure S8 Prussian blue staining of tissues from major organs of mice after imaging. The embedded scale bars correspond to 100 μm .

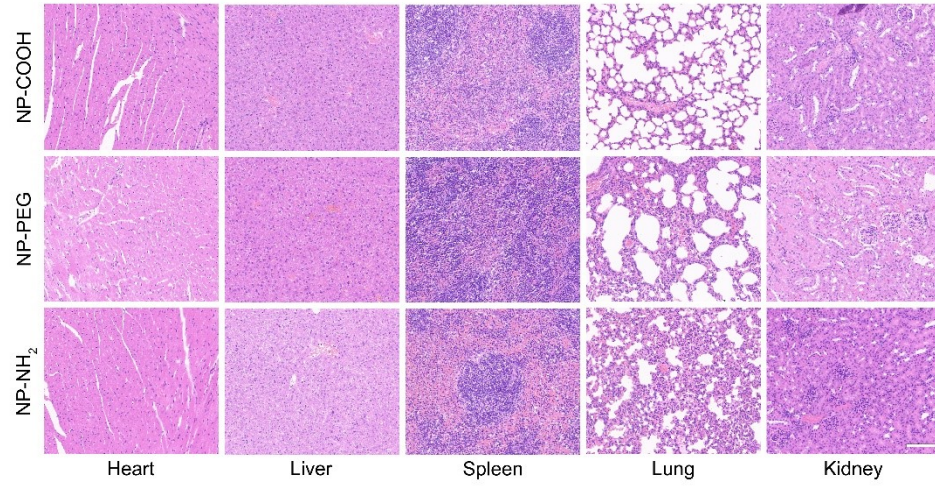


Figure S9 H&E staining of tissues from major organs of mice after imaging. The embedded scale bars correspond to 100 μm .