

Supplementary Information

Zwitterionic choline phosphate conjugated folate-poly (ethylene glycol):

A general decoration of erythrocyte membranes-coated nanoparticles

for enhanced tumor-targeting drug delivery

Yuyue Zhang,^a Yuemin Wang,^a Qiangwei Xin,^a Mingjing Li,^a Peng Yu,^a Jun Luo,^a Xinyuan Xu,^{*a} Xingyu Chen,^{*ab} and Jianshu Li^a

^a College of Polymer Science and Engineering, State Key Laboratory of Polymer Materials Engineering, Sichuan University, Chengdu 610065, P.R. China.

E-mail: xinyuanxu22@scu.edu.cn

^b College of Medicine, Southwest Jiaotong University, Chengdu, 610003, China

E-mail: chenxy@swjtu.edu.cn

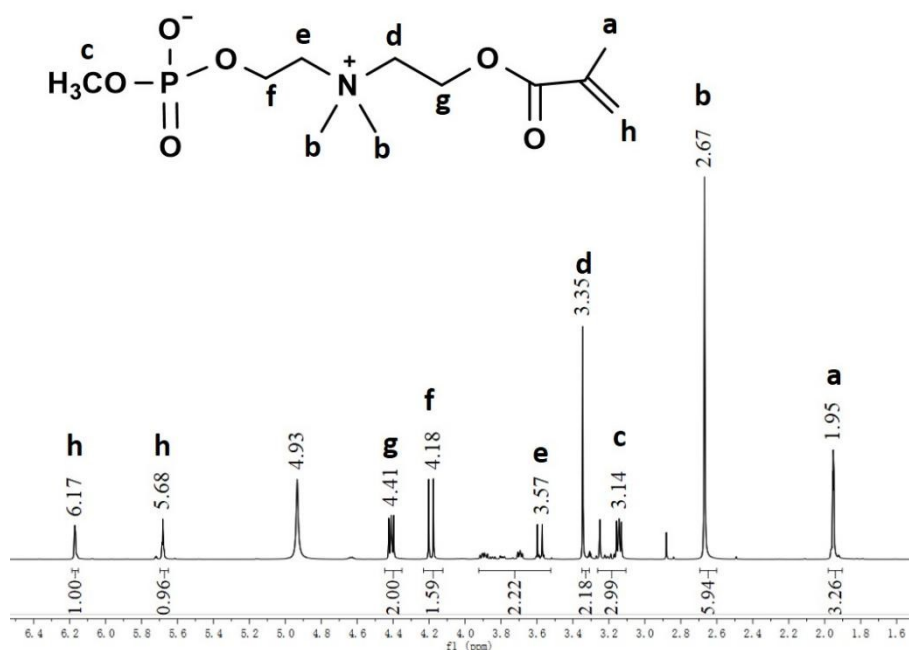


Fig. S1. ¹H NMR spectrum of MCP.

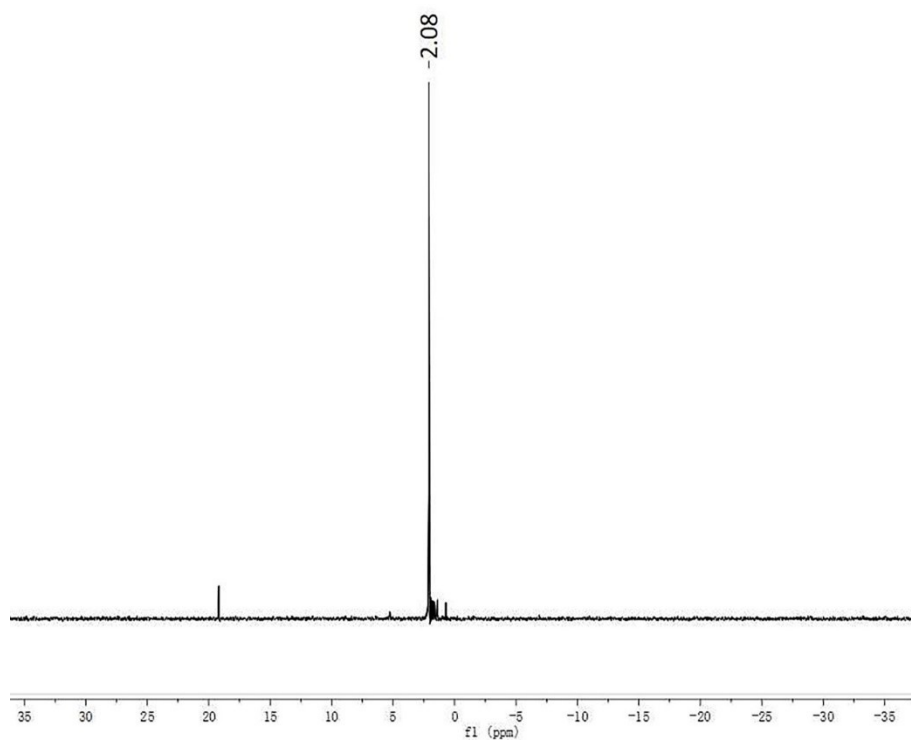


Fig. S2. ^{31}P NMR spectrum of MCP.

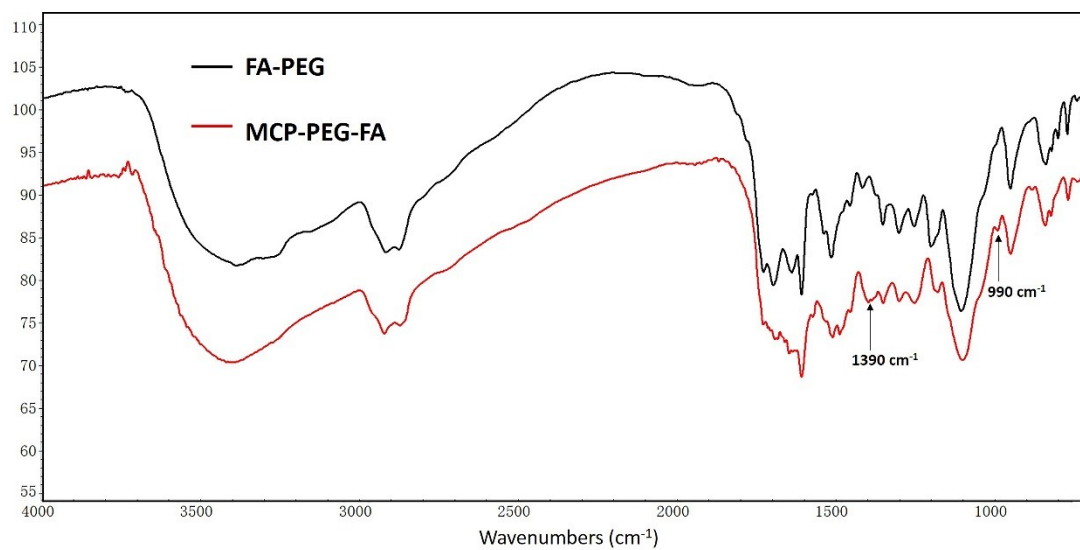


Fig. S3. FT-IR spectra of FA-PEG and MCP-PEG-FA.

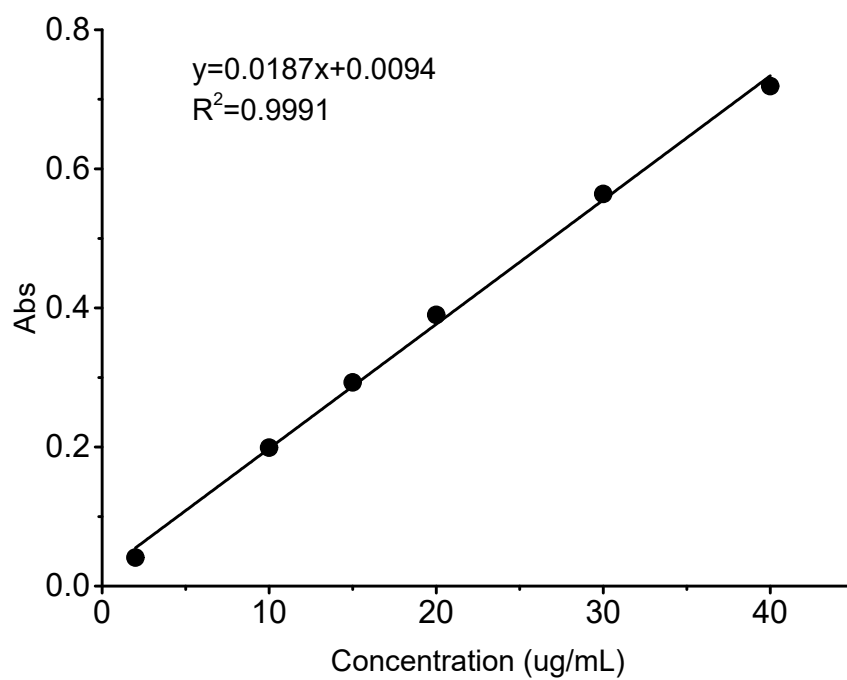


Fig. S4. Corresponding calibration curve of DOX.