

Electronic Supplementary Information (ESI)

A biomimetic anti-biofouling coating in nanofluidic channels

*Sumire Fukuda^{ab‡} and Yan Xu^{*acd}*

^a Department of Chemical Engineering, Graduate School of Engineering, Osaka Prefecture University, 1-2, Gakuen-cho, Naka-ku, Sakai, Osaka 599-8570, Japan

^b Department of Chemistry, Graduate School of Science, Osaka Prefecture University, 1-1, Gakuen-cho, Naka-ku, Sakai, Osaka 599-8531, Japan

^c Japan Science and Technology Agency (JST), PRESTO, 4-1-8 Honcho, Kawaguchi, Saitama 332-0012, Japan

^d NanoSquare Research Institute, Research Center for the 21st Century, Organization for Research Promotion, Osaka Prefecture University, 1-2, Gakuen-cho, Naka-ku, Sakai, Osaka 599-8570, Japan

* Corresponding author: Y. Xu (xu@chemeng.osakafu-u.ac.jp)

‡ Current affiliation: S. Fukuda, School of Medicine, Kobe University, 7-5-1, Kusunoki-cho, Chuo-ku, Kobe, Hyogo 650-0017, Japan

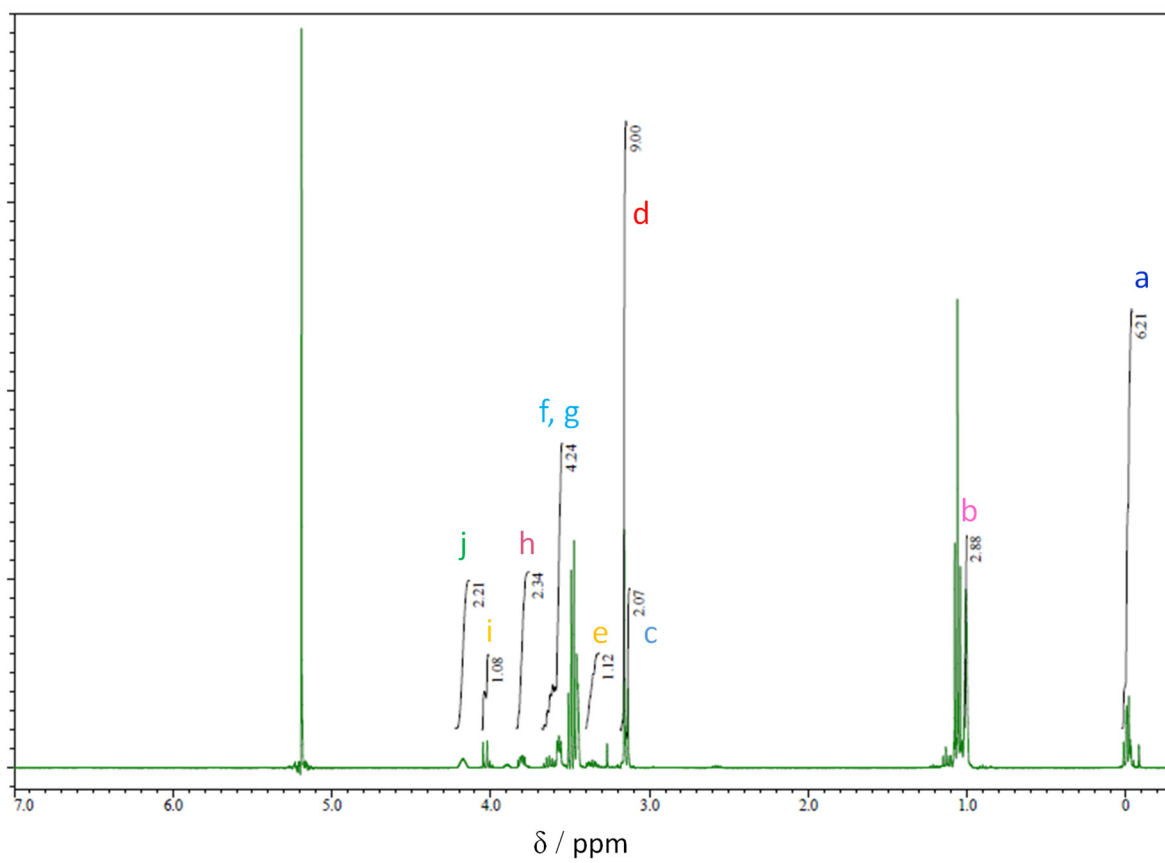
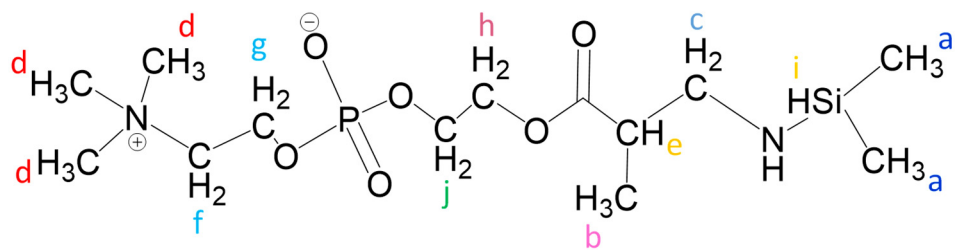


Fig. S1 ^1H NMR spectra of MPC-Si