

Rubbing induced reversible fluorescence switching in thiophene derivate organic semiconductor film by mechanical amorphisation

Massimiliano Cavallini, Ilse Manet, Marco Brucale, Laura Favaretto, Manuela Melucci, Lucia Maini, Fabiola Liscio, Michele della Ciana and Denis Gentili.*

Supporting Information

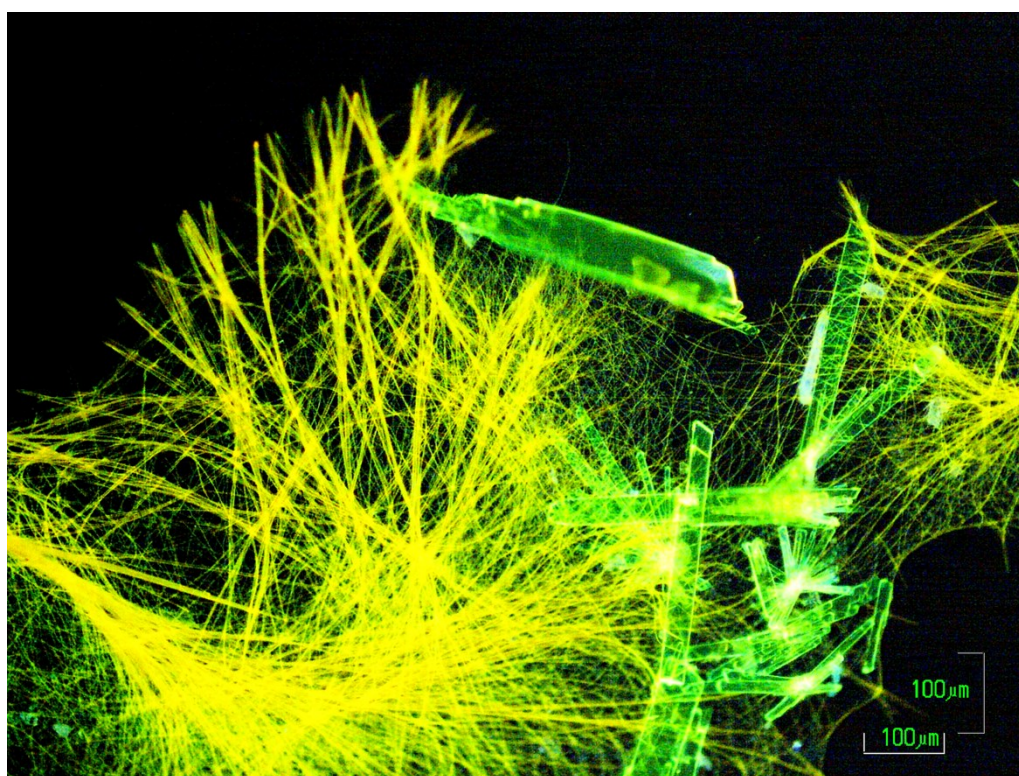


Figure S1. Large scale fluorescence image of **1** thin deposit prepared by drop casting