

Electronic Supplementary Information

**Concentric/Bipolar Ordering of Liquid Crystalline
Graphene Oxide Nanosheets Confined in Microfluidically
Synthesized Spherical Droplets**

Ju Young Lee^a, Min Jun Oh^a and Pil J. Yoo^{*ab}

^a School of Chemical Engineering, Sungkyunkwan University (SKKU), Suwon 16419, Republic of Korea.

^b SKKU Advanced Institute of Nanoscience and Technology (SAINT), Sungkyunkwan University (SKKU), Suwon 16419, Republic of Korea.

E-mail: pjyoo@skku.edu

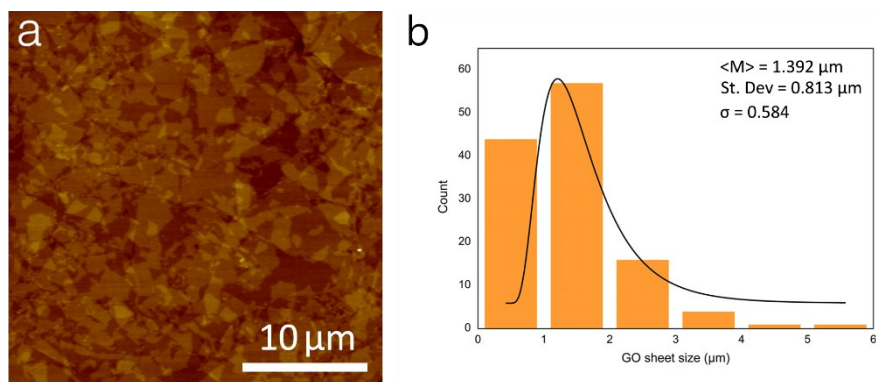


Fig. S1 (a) AFM image of polydisperse standard GO nanosheets used for experiments (b) the size distribution of (a) standard GO nanosheets. $\langle M \rangle$ is the mean sheet size of GO nanosheet. St. Dev is standard deviation and σ is normalized standard deviation.

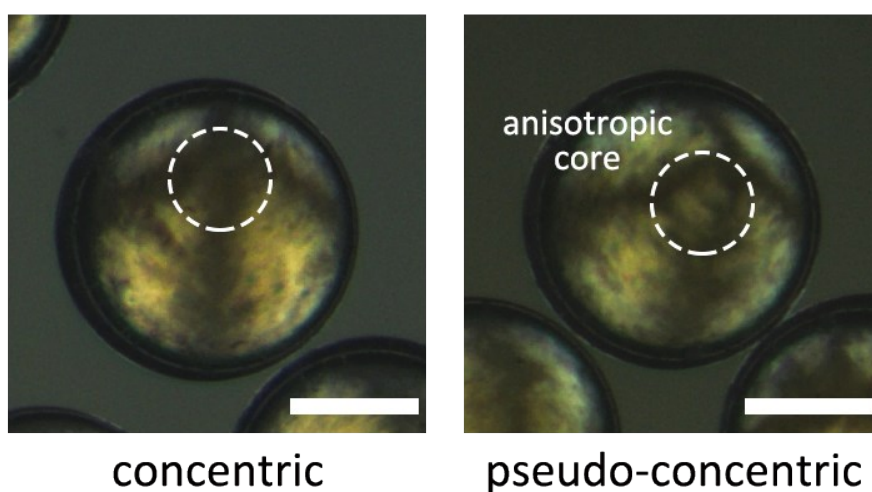


Fig. S2 POM images of concentric and pseudo-concentric configurations collected from the microdroplets prepared from 6 mg mL^{-1} GO solutions with the size of $220 < D (\mu\text{m}) < 230$. The scale bars are $100 \mu\text{m}$.