

Supporting Information

Immunological quantitative detection of dicofol in medicinal materials

Contents

Fig. S1 The GC-MS spectrums of dicofol negative liquorice and angelica sinensis samples.

Fig. S2 The LC-MS characterization of DICH: (a) EIC of DICH; (b) MS spectrum of DICH.

Fig. S3 The UV absorption spectra of conjugates: (a) immunogen (DICH-KLH); (b) coating antigen (DDA-BSA).

Fig. S4 Optimization of the resuspension buffer: results from four kinds of reagents (Reagent 1, 0.01 mol/L PBS containing 1% Tween-20; Reagent 2, 0.01 mol/L PBS containing 1% PEG; Reagent 3, 0.01 mol/L PBS containing 1% Triton X-100; Reagent 4, 0.01 mol/L PBS containing 1% ON-870), and detected by using (a) liquorice and (b) angelica sinensis samples with 0 and 100 ng/mL, respectively.

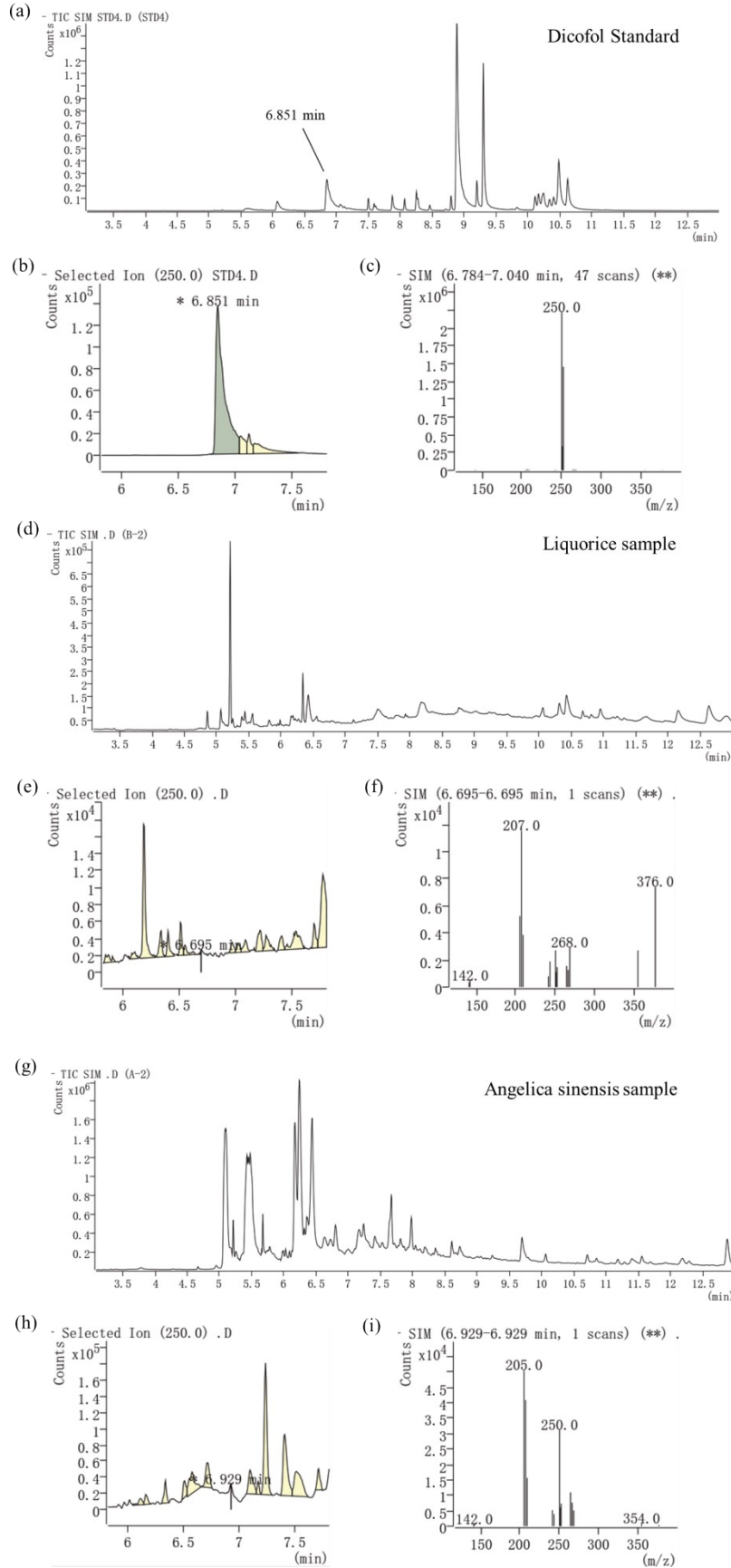


Fig. S1 The GC-MS spectrums of dicofol negative liquorice and angelica sinensis samples.

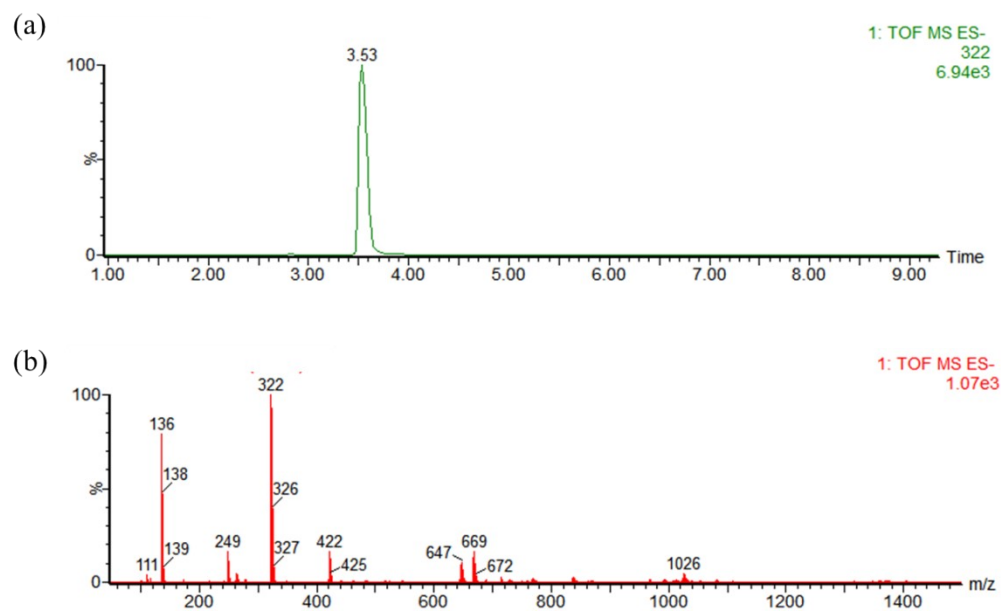


Fig. S2 The LC-MS characterization of DICH: (a) EIC of DICH; (b) MS spectrum of DICH.

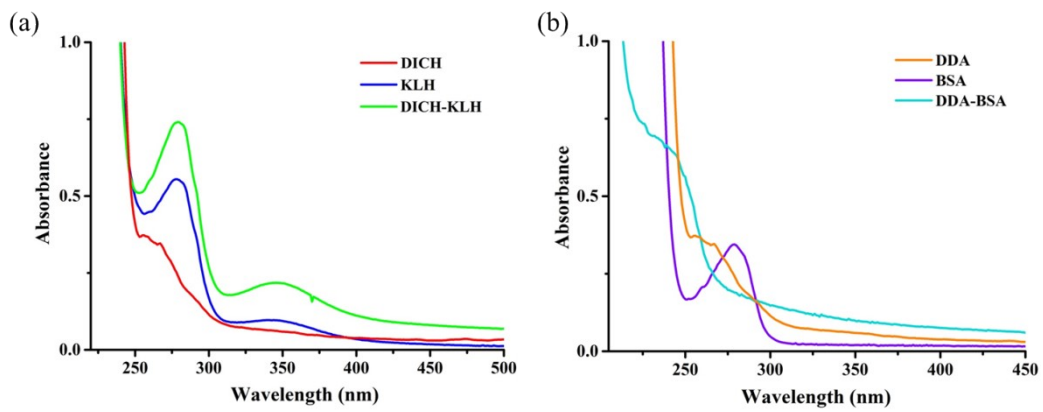


Fig. S3 The UV absorption spectra of conjugates: (a) immunogen (DICH-KLH); (b) coating antigen (DDA-BSA).

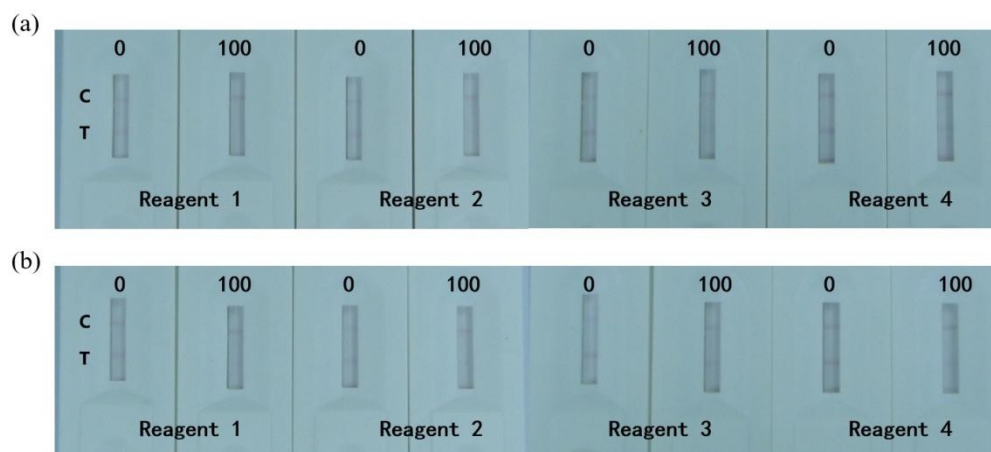


Fig. S4 Optimization of the resuspension buffer: results from four kinds of reagents (Reagent 1, 0.01 mol/L PBS containing 1% Tween-20; Reagent 2, 0.01 mol/L PBS containing 1% PEG; Reagent 3, 0.01 mol/L PBS containing 1% Triton X-100; Reagent 4, 0.01 mol/L PBS containing 1% ON-870), and detected by using (a) liquorice and (b) angelica sinensis samples with 0 and 100 ng/mL, respectively.