

Evaluation of Laser Direct Infrared Imaging for Rapid Analysis of Pharmaceutical Tablets

Supplementary Material

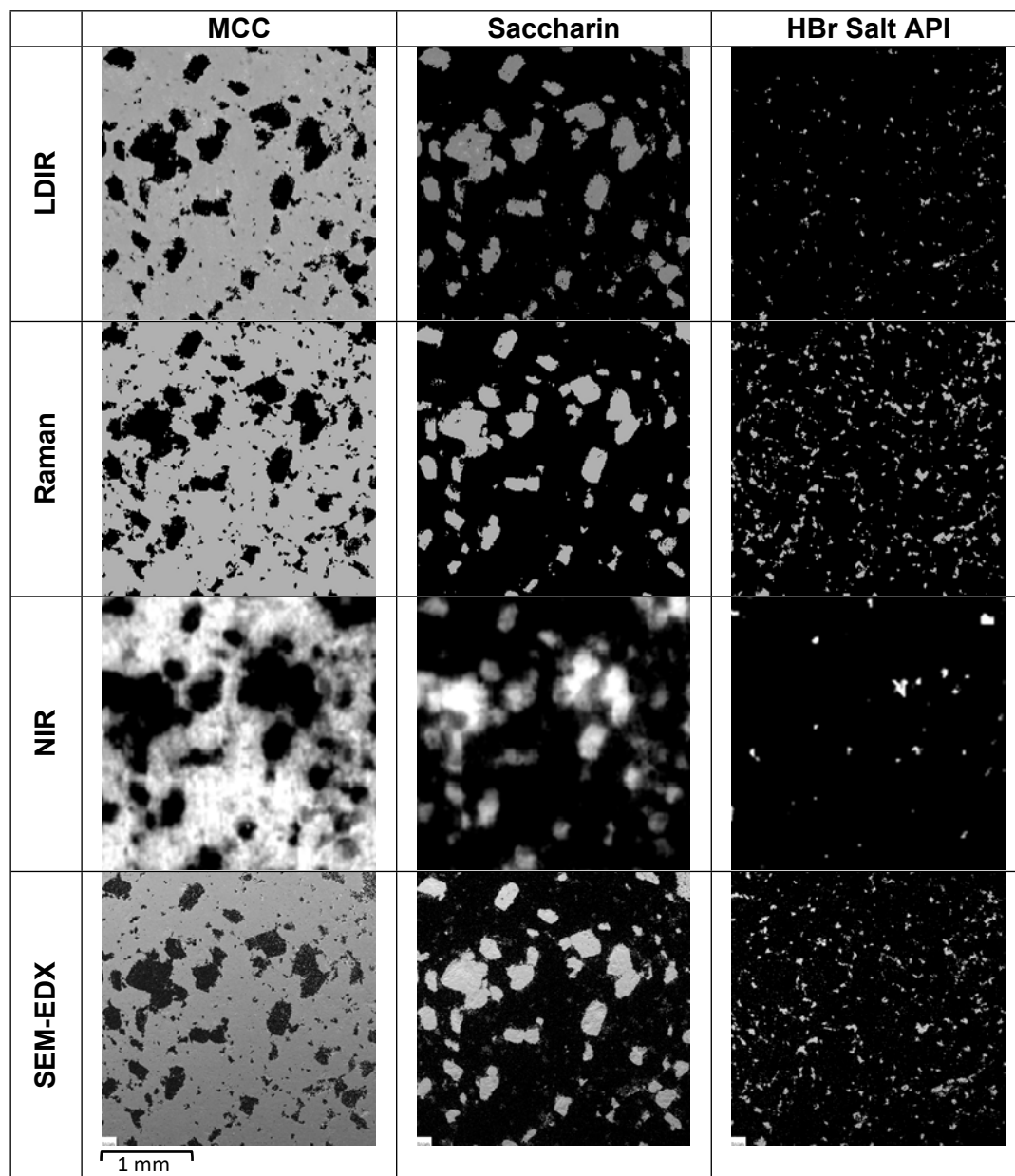


Figure S1. Single component distribution maps of the individual components in the three-component model system obtained by LDIR, Raman, NIR and SEM-EDX.

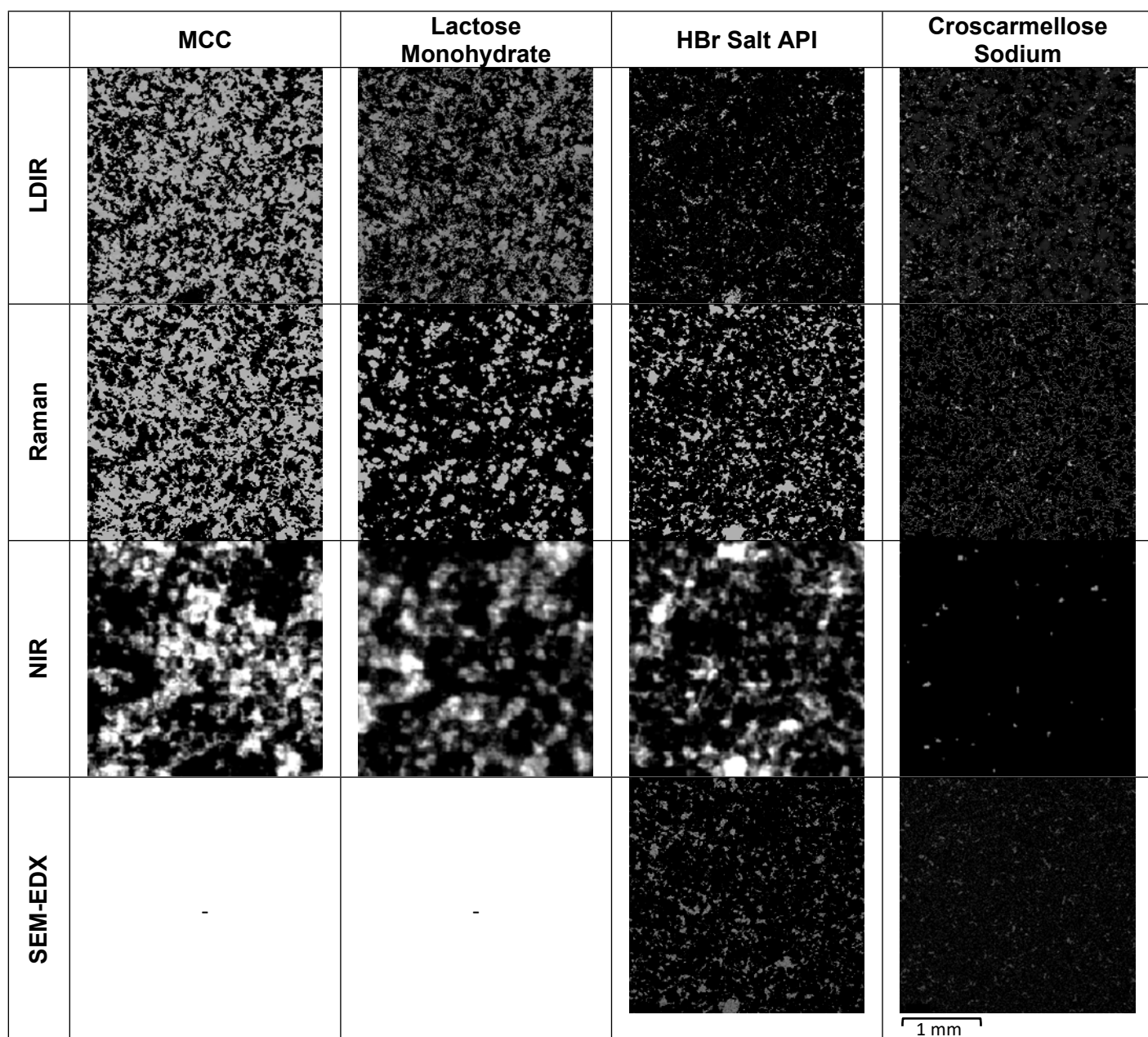


Figure S2. Single component distribution maps of the individual components in the pharmaceutical tablet formulation obtained by LDIR, Raman, NIR and SEM-EDX. Due to the chemical nature of the formulation, SEM-EDX could not distinguish between MCC and lactose monohydrate.