

ARTICLE

6 **Rapid detection of phycotoxin domoic acid in seawater and**
7 **seafood based on the developed lateral flow immunoassay**

8 Olga D. Hendrickson^a, Elena A. Zvereva^a, Olga N. Solopova^b, Nikolay E. Varlamov^b, Olga B.
9 Shemchukova^b, Anatoly V. Zherdev^a, Peter G. Sveshnikov^c, and Boris B. Dzantiev^{a*}

1 Received
2 Accepted

3 DOI:

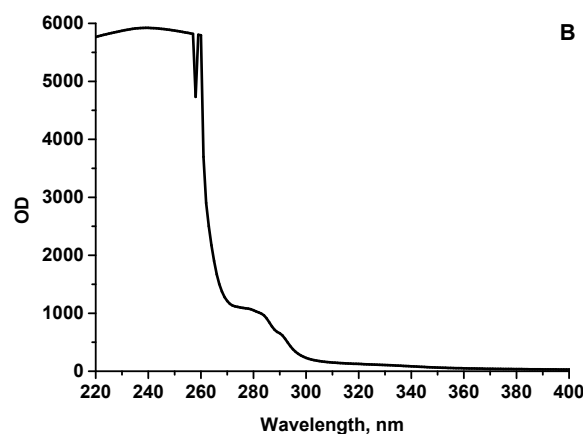
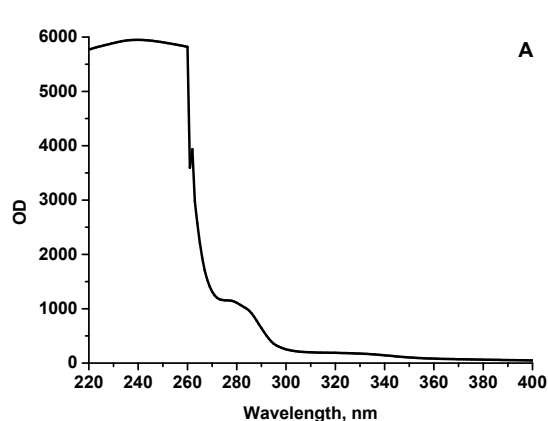
10

11

4

5

12



13 Figure 1S. Spectra of DA-BSA (A) and DA-STI (B) conjugates.

22

23

24

25

26

27

28

29

14

15

16

17

18

19

20

21

30

31

32

33

34

35

36

37

^aBach Institute of Biochemistry, Research Center of Biotechnology of the Russian Academy of Sciences, Leninsky prospect 33, 119071, Moscow, Russia.

^bBlokhin National Medical Research Center of Oncology, Ministry of Health of the Russian Federation, Kashirskoye shosse 24, 115478, Moscow, Russia.

^cRussian Research Center for Molecular Diagnostics and Therapy, Sympheropolsky Blvrd., 8, 117638, Moscow, Russia

*Corresponding author: dzantiev@inbi.ras.ru, Tel. /Fax: +7 495 9543142

38

39 **Table 1S.** Parameters of the LFIA using different membranes and DA–protein conjugates.

Working membrane	Signal amplitude at immobilized DA–BSA (RU)	Signal amplitude at immobilized DA–STI (RU)	DA LOD at immobilized DA–BSA (ng/mL)	DA LOD at immobilized DA–STI (ng/mL)	Mab concentration at immobilized DA–BSA (ng/mL)	Mab concentration at immobilized DA–STI (ng/mL)
CNPC-CC12	~4000	~2500	1.4	1.6	140	250
Hi-Flow 075	~3600	~1750	1.9	2.1	200	300

40

41