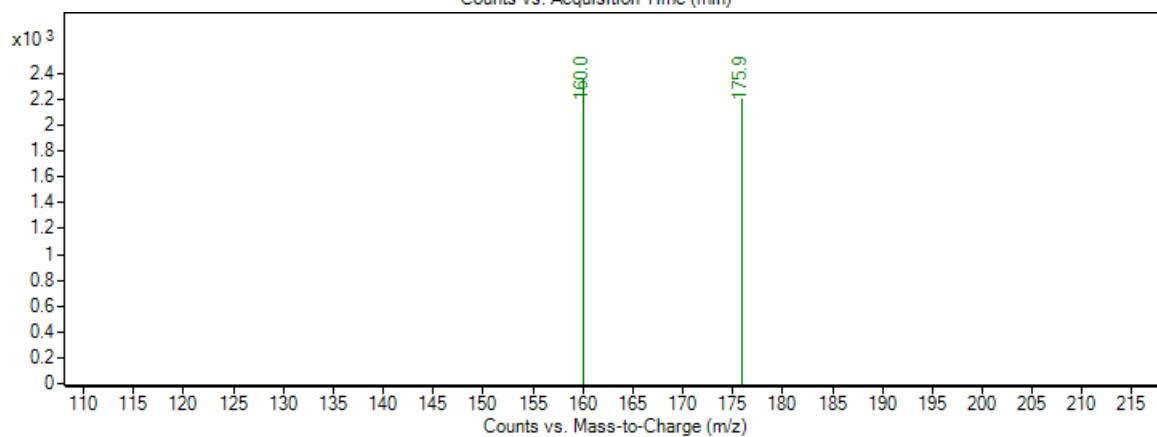
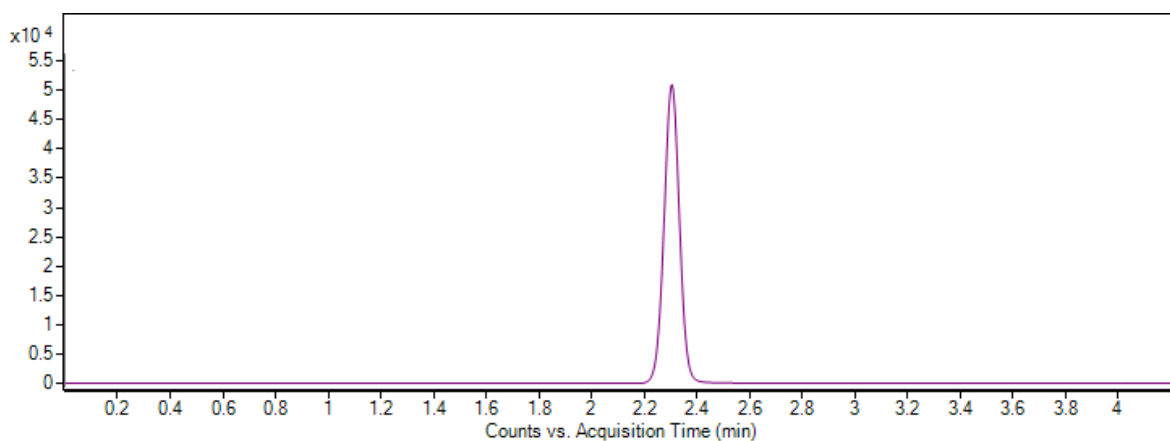
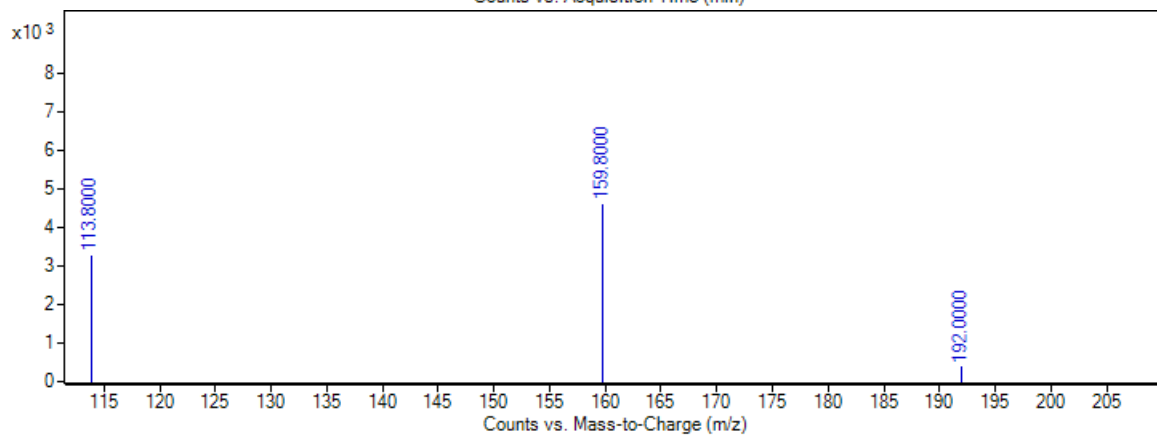
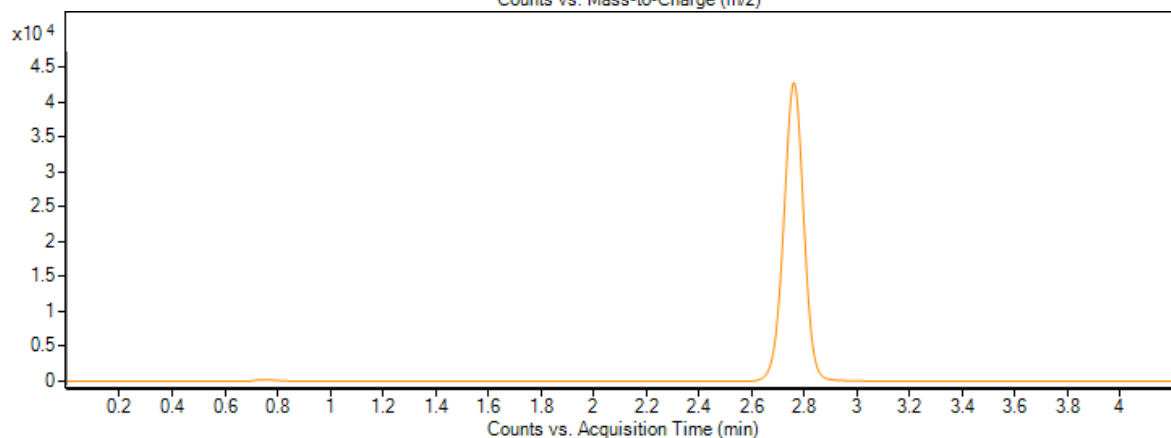


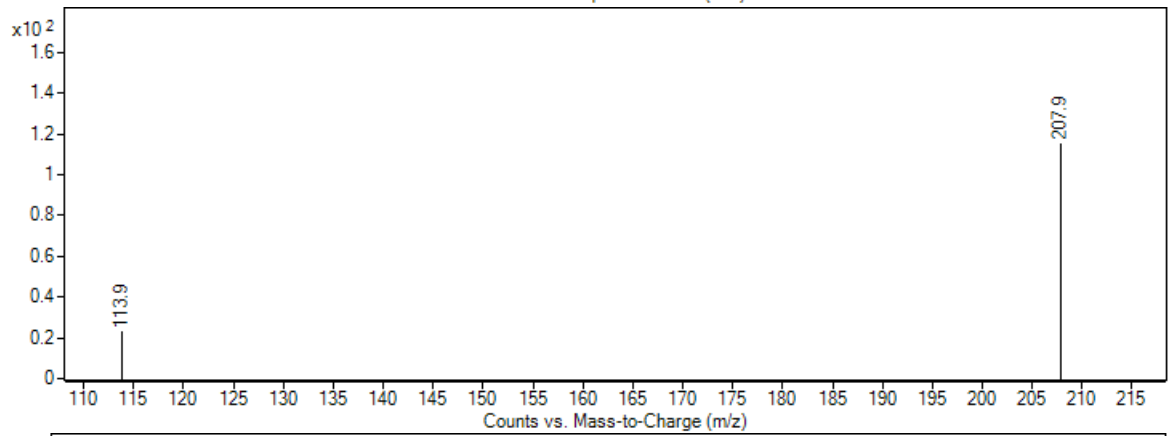
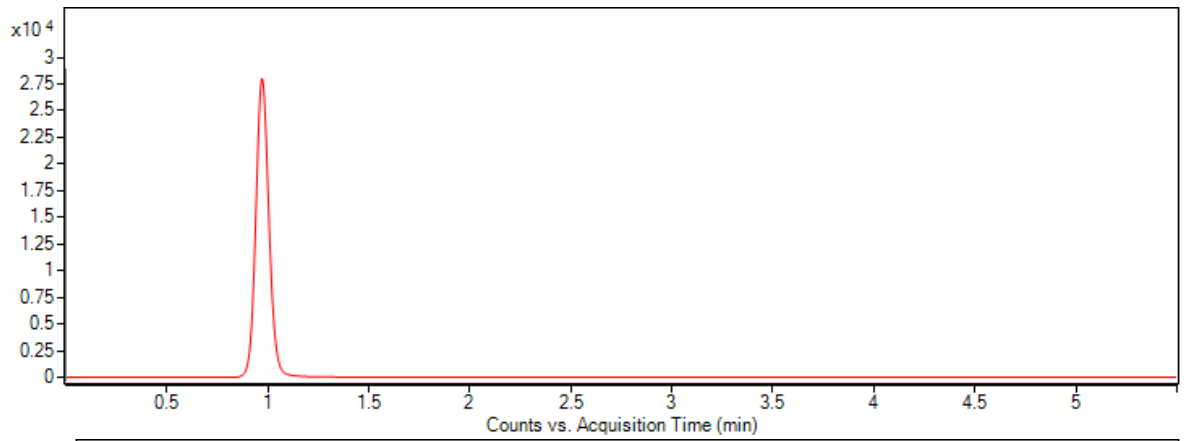
A



B



C



D

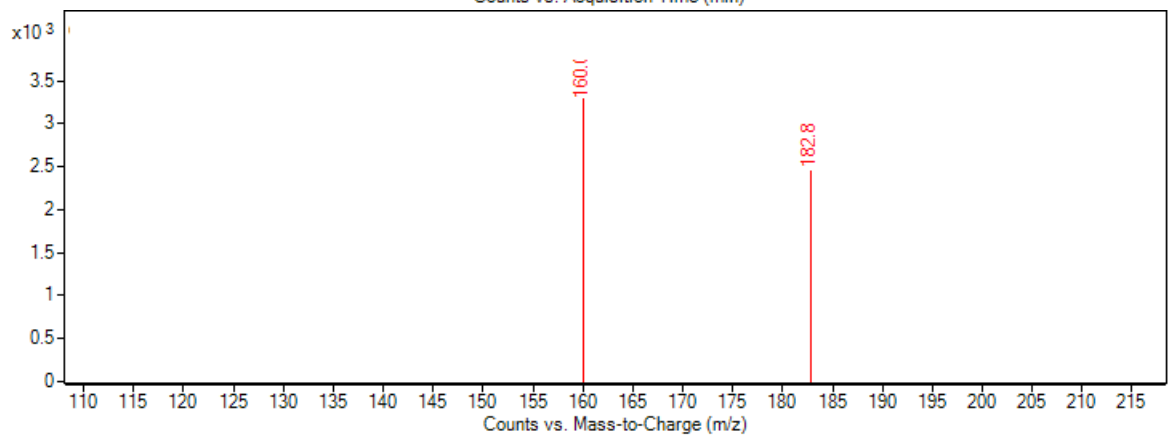
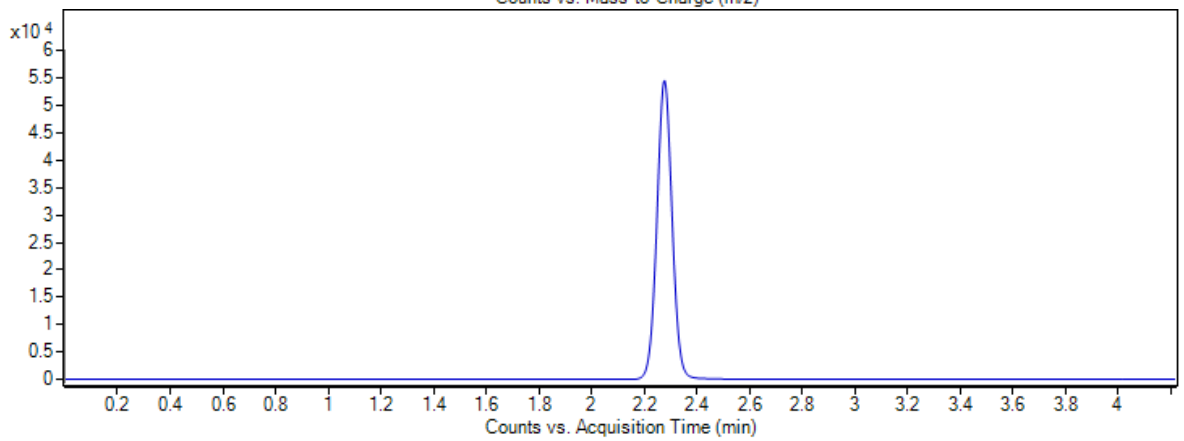


Fig.1S Chromatograms and mass spectrum in the ISF sample spiked with penicillin G (A), penicillin V(B), amoxicillin (C), IS (D), in which the y-axis indicates the counts (absolute abundance) of ionized molecules and the x-axis indicates retention time

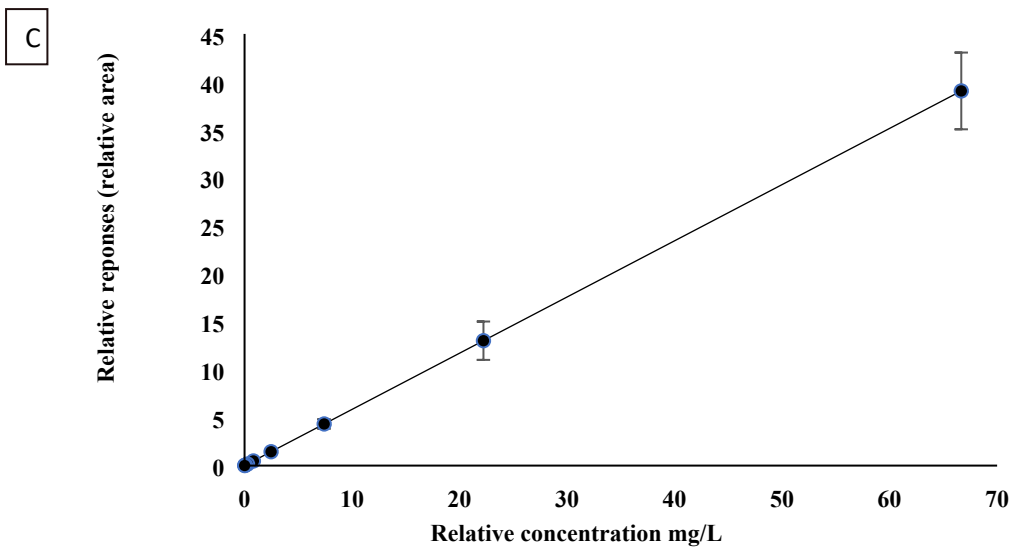
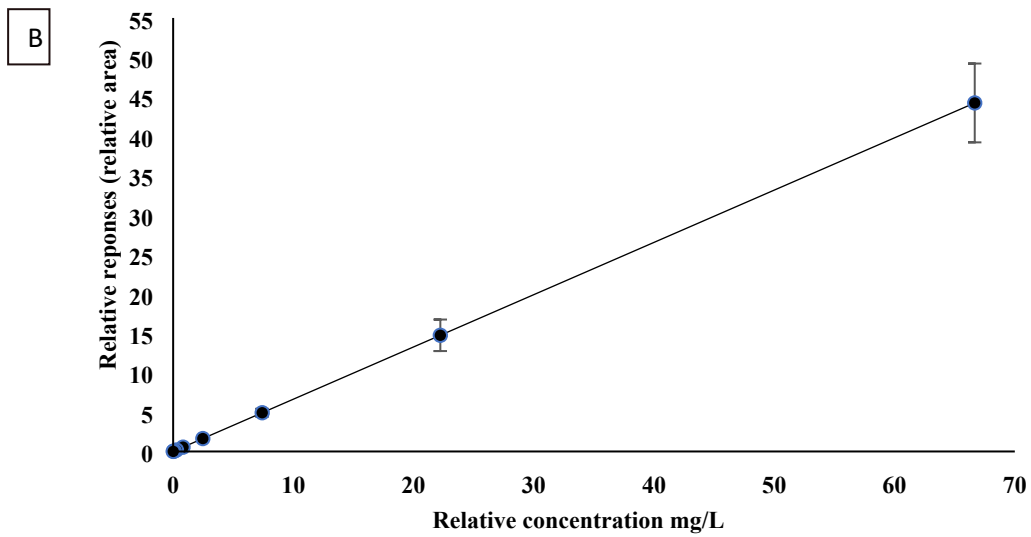
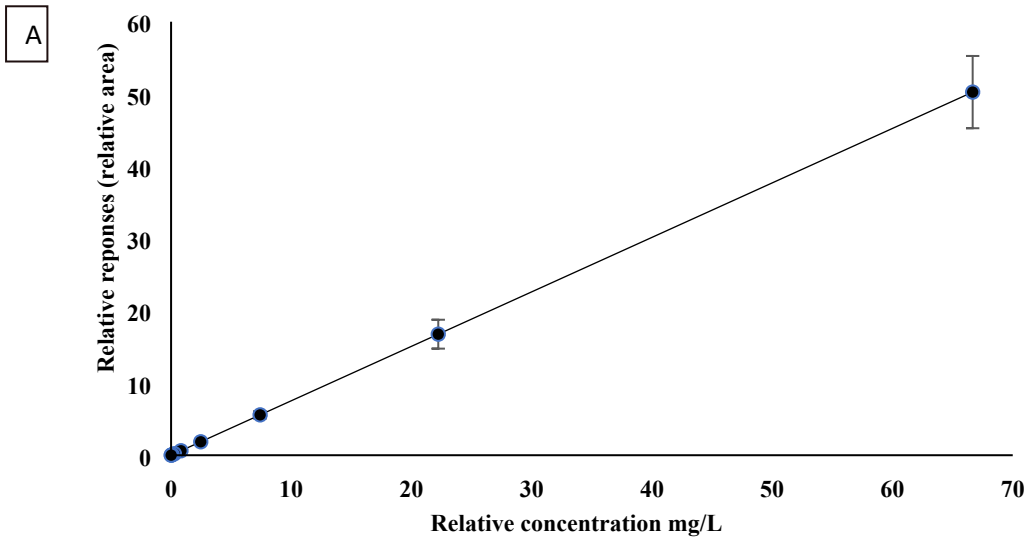


Fig. 2S The LC/MS calibration curve showing the relative area of analyte to internal standard plotted against relative concentration analyte to internal standard (IS=0.15 mg/L). Each data point represents the average of six separately prepared spiked standards.

a Weighting was 1/x for all analytes. R^2 , coefficient of determination.

