

Electronic supplementary information (ESI)

Isolation and quantification of synthetic cannabinoids in human urine using membrane-assisted solvent extraction followed by liquid chromatography-tandem mass spectrometry

Cristian Suárez-Oubiña, Iván Álvarez-Freire, Pamela Cabarcos, Ana María Bermejo, Pilar Bermejo-Barrera, Antonio Moreda-Piñeiro

Figure S1. Chemical structures and (predicted) LogP of the synthetic cannabinoids under study.

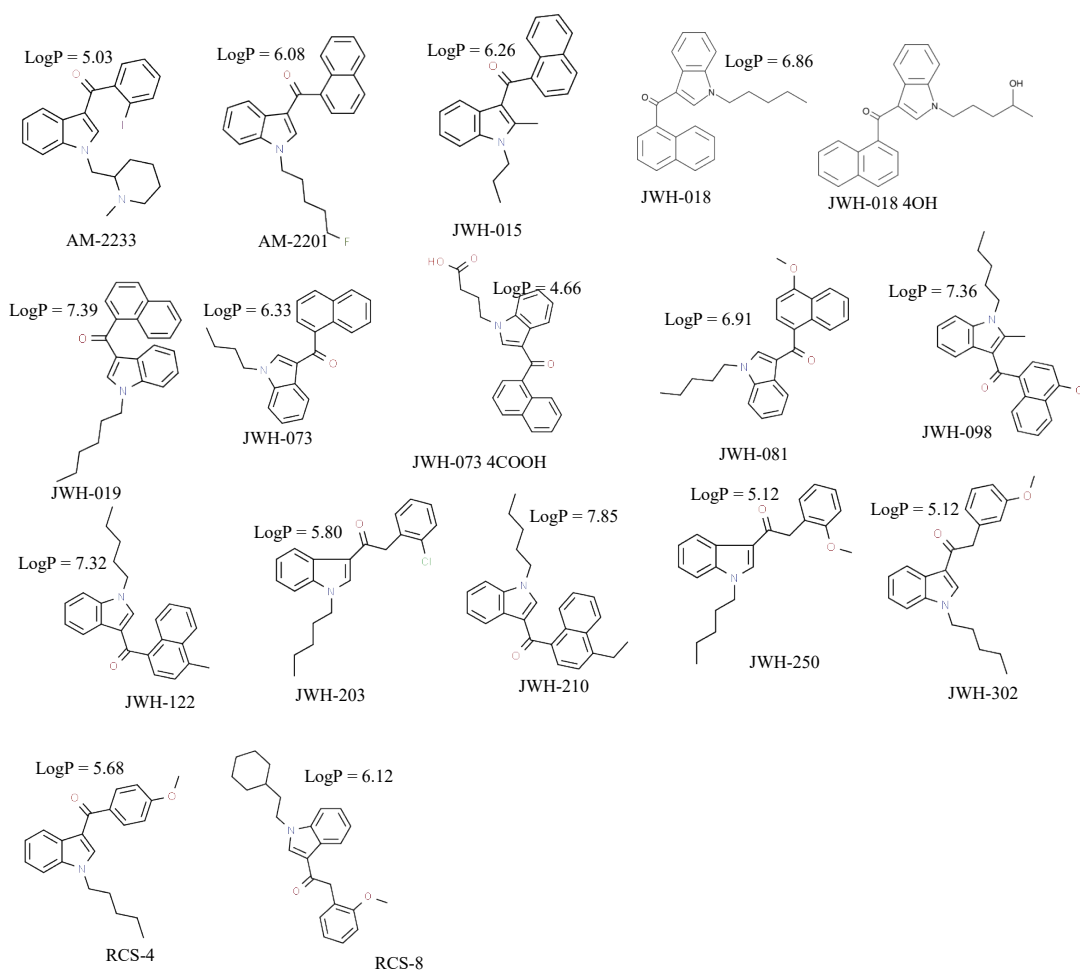


Figure S2. Effect of the organic solvent used as an acceptor phase on the analytical recovery of SCs from urine

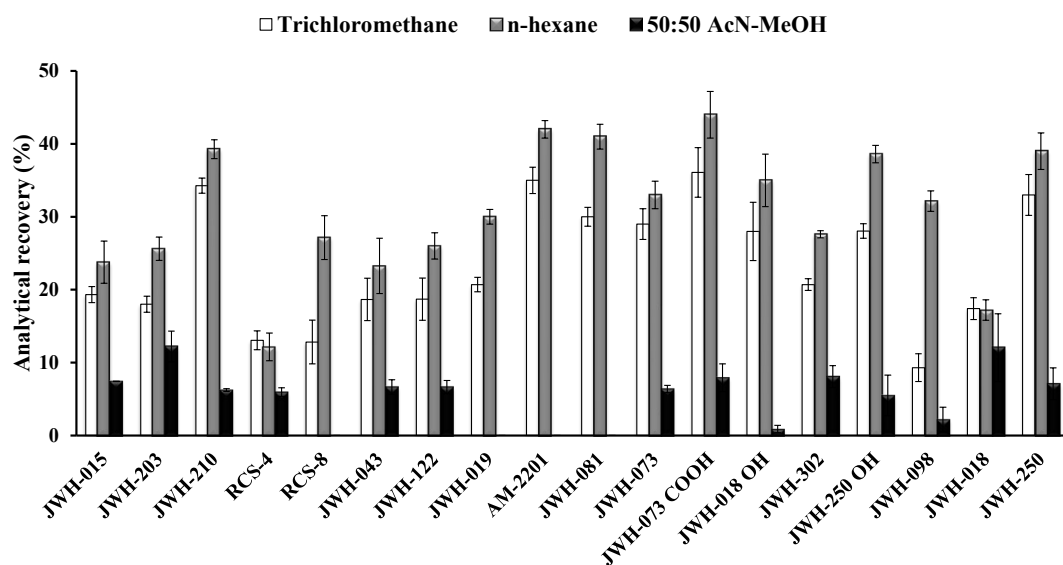


Figure S3. Effect of the shaking (magnetic or mechanical) on the analytical recovery of SCs from urine

