

1 **High sensitivity (zeptomole) detection of BODIPY- labelled heparan**
2 **sulfate (HS) disaccharides by ion-paired RP-HPLC and LIF detection**
3 **enables analysis of HS from mosquito midguts.**

4

5 Marissa L. Maciej-Hulme¹, Anaëlle C. N. Leprince^{1,2}, Andre Lavin³, Scott E. Guimond¹, Jeremy E.
6 Turnbull¹, Julien Pelletier¹, Edwin A. Yates^{4,1}, Andrew K. Powell³ and Mark A. Skidmore^{1,4}

7

8 1. Centre for Glycoscience Research and Training, School of Life Sciences, Keele University,
9 Staffordshire, ST5 5BG, United Kingdom.

10 2. Université de Rennes 1, Rue du Thabor, 35065 Rennes Cedex, France.

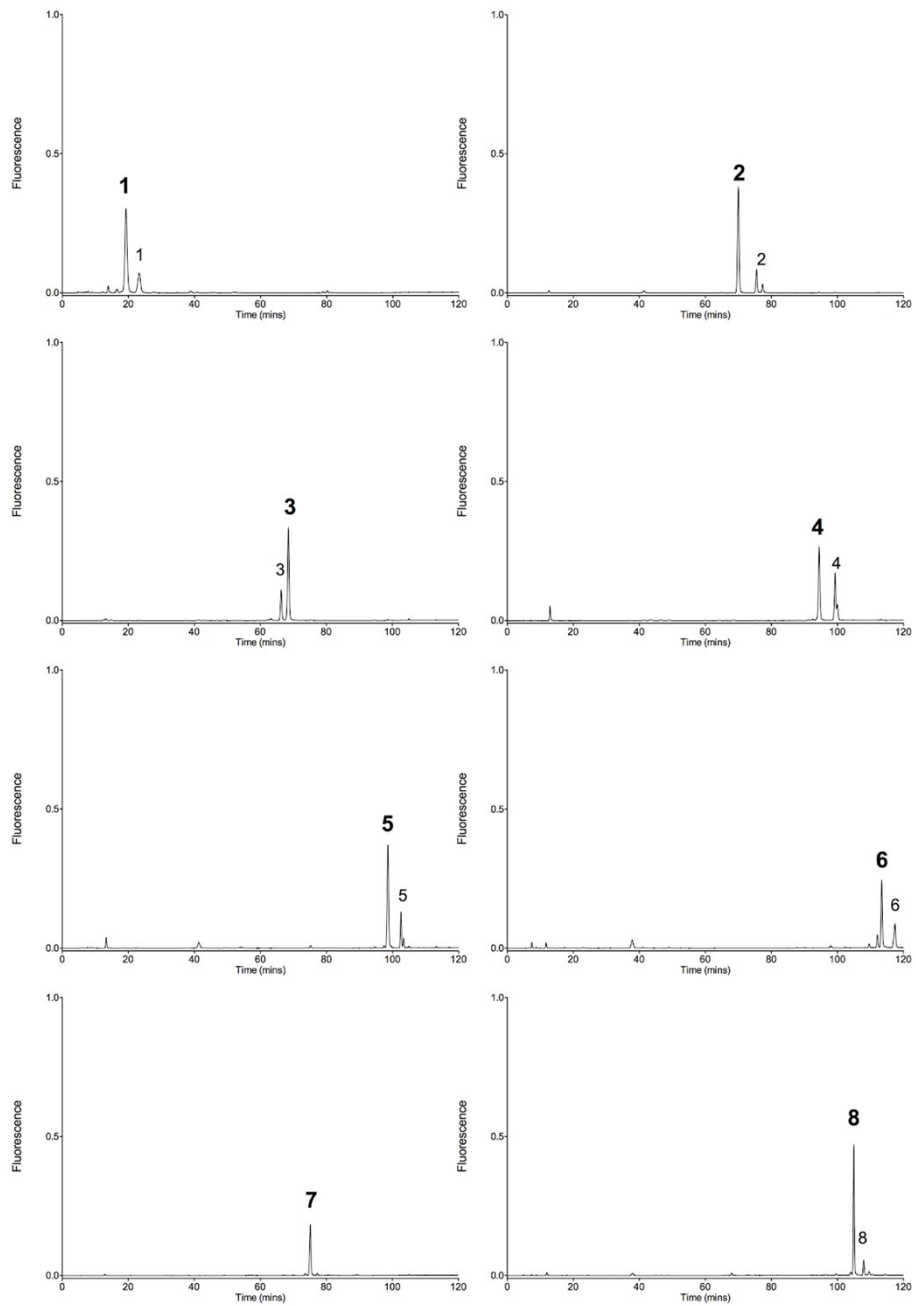
11 3. School of Pharmacy and Biomolecular Sciences, Liverpool John Moores University, Liverpool
12 L3 3AF, United Kingdom.

13 4. Department of Biochemistry and Systems Biology, Institute of Systems, Molecular and
14 Integrative Biology, University of Liverpool, Liverpool L69 7ZB United Kingdom.

15

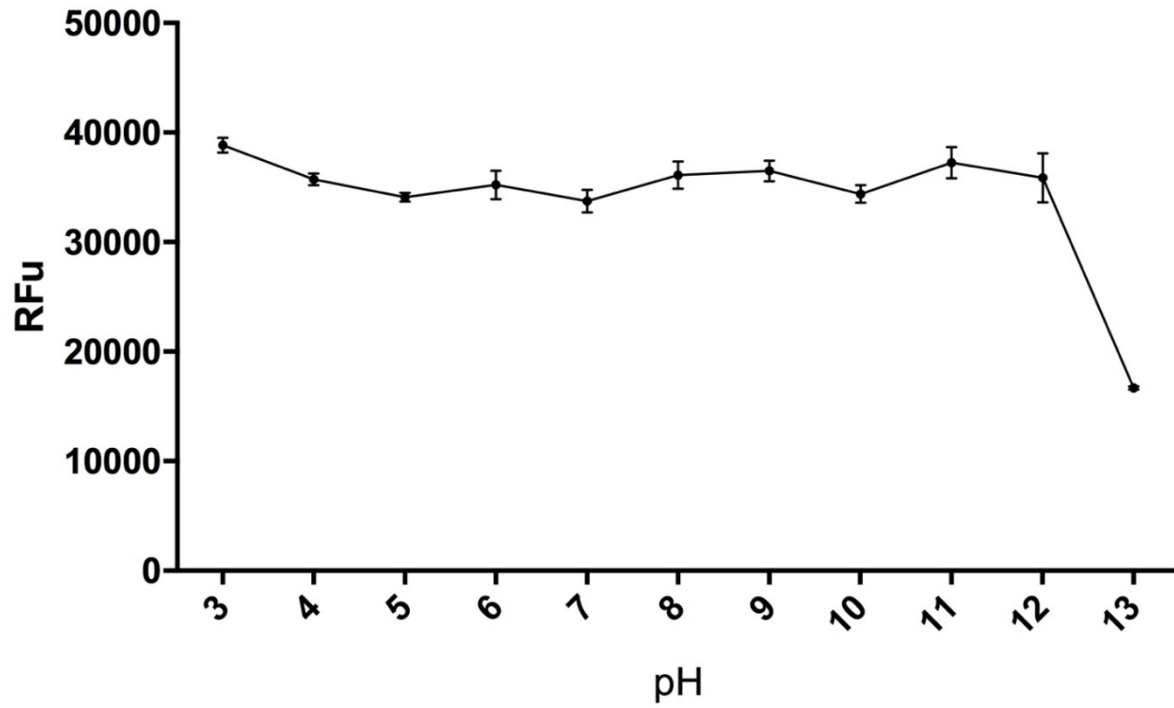
16 **SUPPLEMENTARY INFORMATION**

17 **Supplementary Figures**



18

19 **Figure S1.** Chromatograms of BODIPY-labelled individual HS Δ -disaccharides 1 - 8. Dominant peaks
 20 are noted in bold, minor peak species are also labelled.



21

22 **Figure S2.** BODIPY-FL hydrazide fluorescence in water pH 3 - 13. Error bars represent the SEM of
23 three replicates.