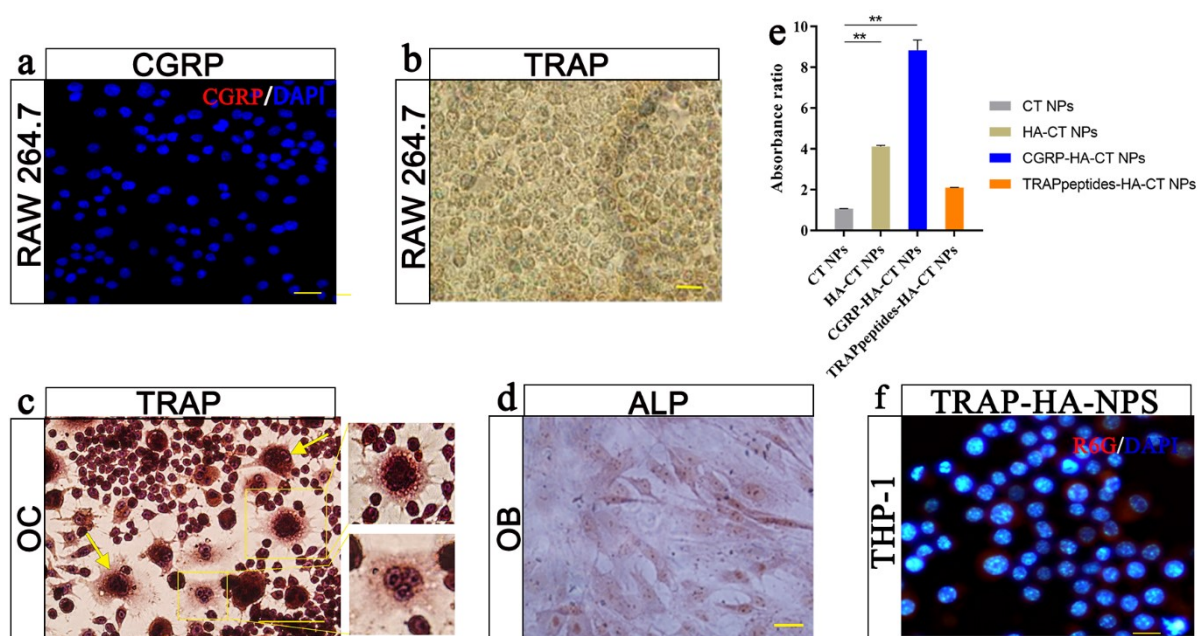
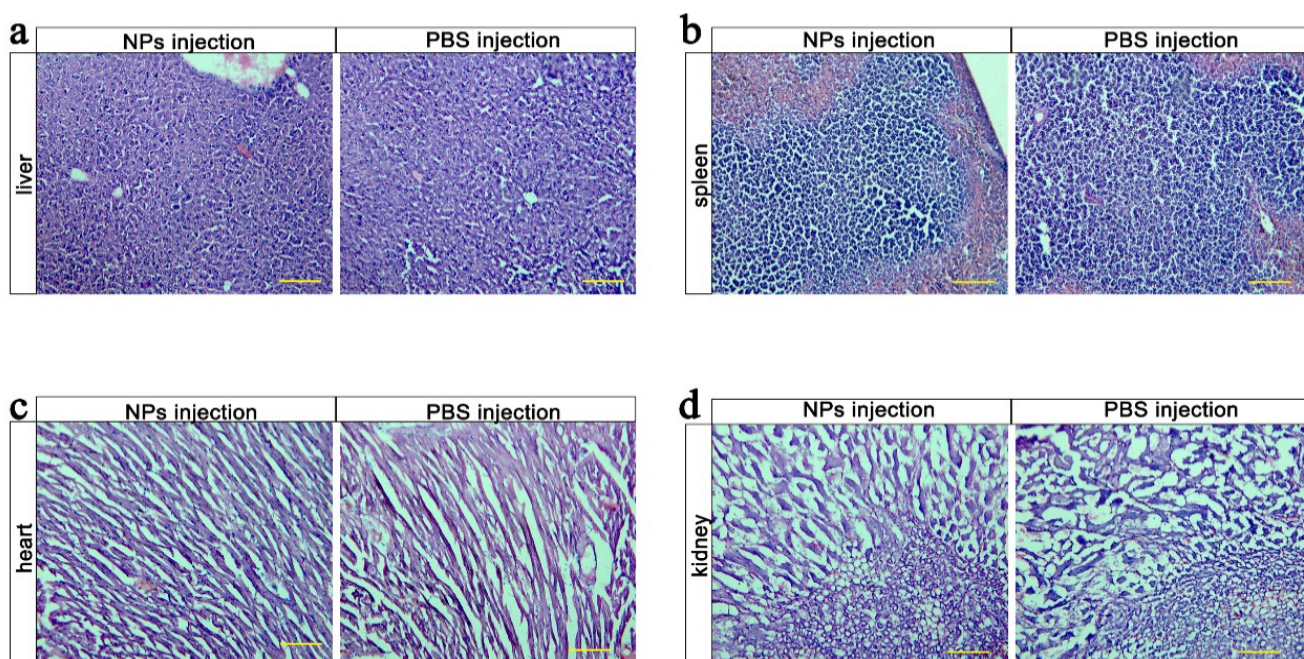


ARTICLE



**Figure S1** (a) CGRP staining of RAW264.7 cells. CGRP is red. Cell nuclei are blue (DAPI), bars = 50  $\mu$ m (b) TRAP staining of RAW264.7, cells bars = 50  $\mu$ m.(c) TRAP staining of mature OCs, bars = 100  $\mu$ m.(d) ALP staining of OBs, bars = 50  $\mu$ m. (e) The selection efficiency of for different nanoparticles,  $\Delta m$  (OC)/ $\Delta m$  (OB). \*\* $P < 0.01$  (n=3). (f) Targeting ability of R6G-labelled dual-targeting nanoparticles for THP-1, cells bars = 50  $\mu$ m.



**Figure S2** Inject NPs or PBS for 14h, hematoxylin-eosin staining of organs (a) Liver staining. (b) Staining of the spleen. (c) Staining of the heart.(d) Staining of the kidney. Scale bars = 100  $\mu$ m.