

Supporting Information

Synthesis of bio-based polyester elastomers and evaluation of the in vivo biocompatibility and biodegradability as biomedical materials

Yu Gao,^{a,b} Jiajia Xue,^{a,b} Liqun Zhang,^{a,b,} and Zhao Wang^{a,b,*}*

^aBeijing Laboratory of Biomedical Materials, Beijing University of Chemical Technology, Beijing 100029, P. R. China

^bState Key Laboratory of Organic-Inorganic Composites, Beijing University of Chemical Technology, Beijing 100029, P. R. China

*Corresponding authors: zhanglq@mail.buct.edu.cn (Prof. Liqun Zhang),
wangzhao@mail.buct.edu.cn (Prof. Zhao Wang)

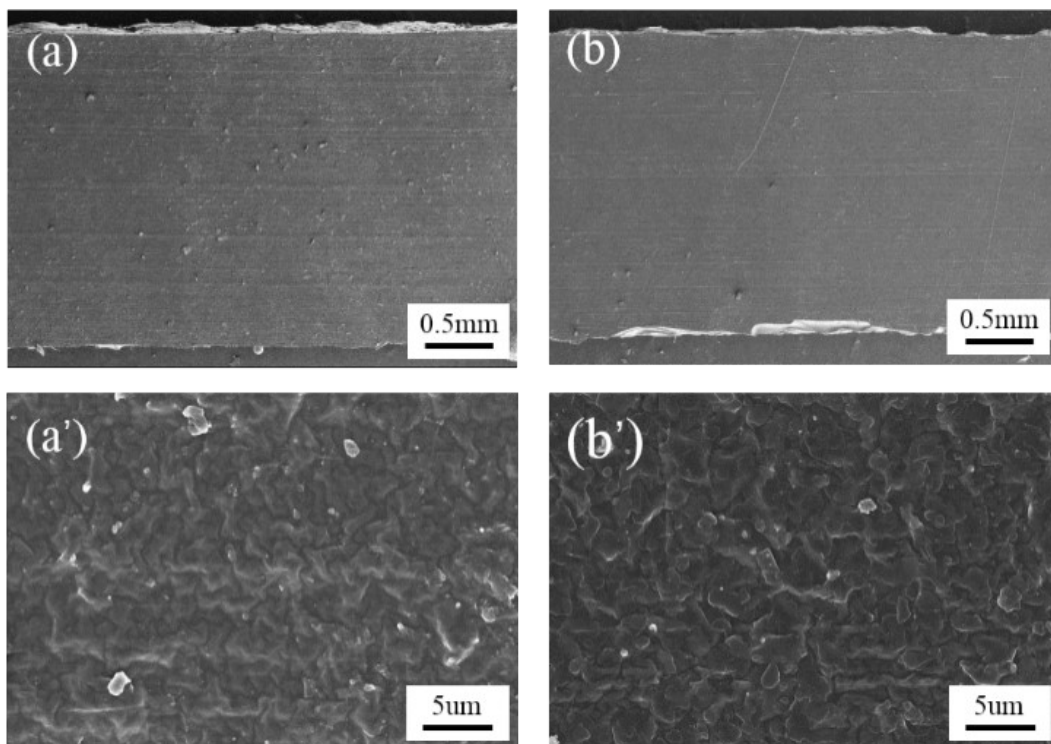


Figure S1. The scanning electron micrograph of BPE: (a) the surface of undegraded sample($\times 35$); (a') the surface of undegraded sample($\times 200$); (b) the surface of BPE soaked in protease solution($\times 35$); (b') the surface of BPE soaked in protease solution($\times 200$).

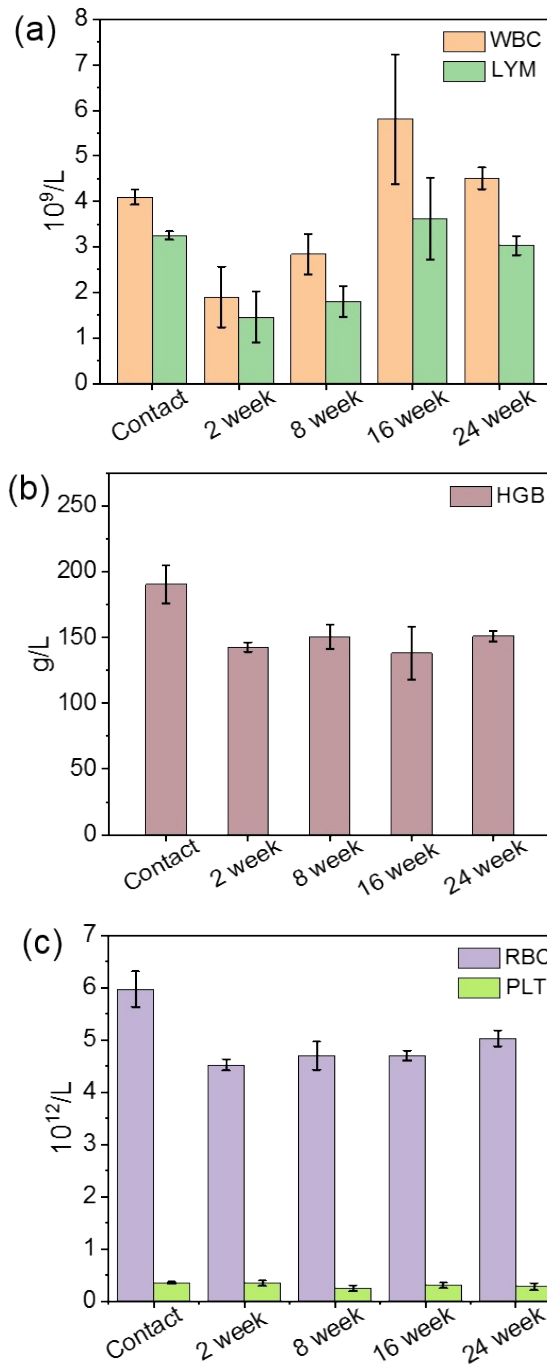


Figure S2. Mice blood routine index of (a) white blood cell and lymphocyte index, (b) hemoglobin index, (c) red blood cell and platelet index.

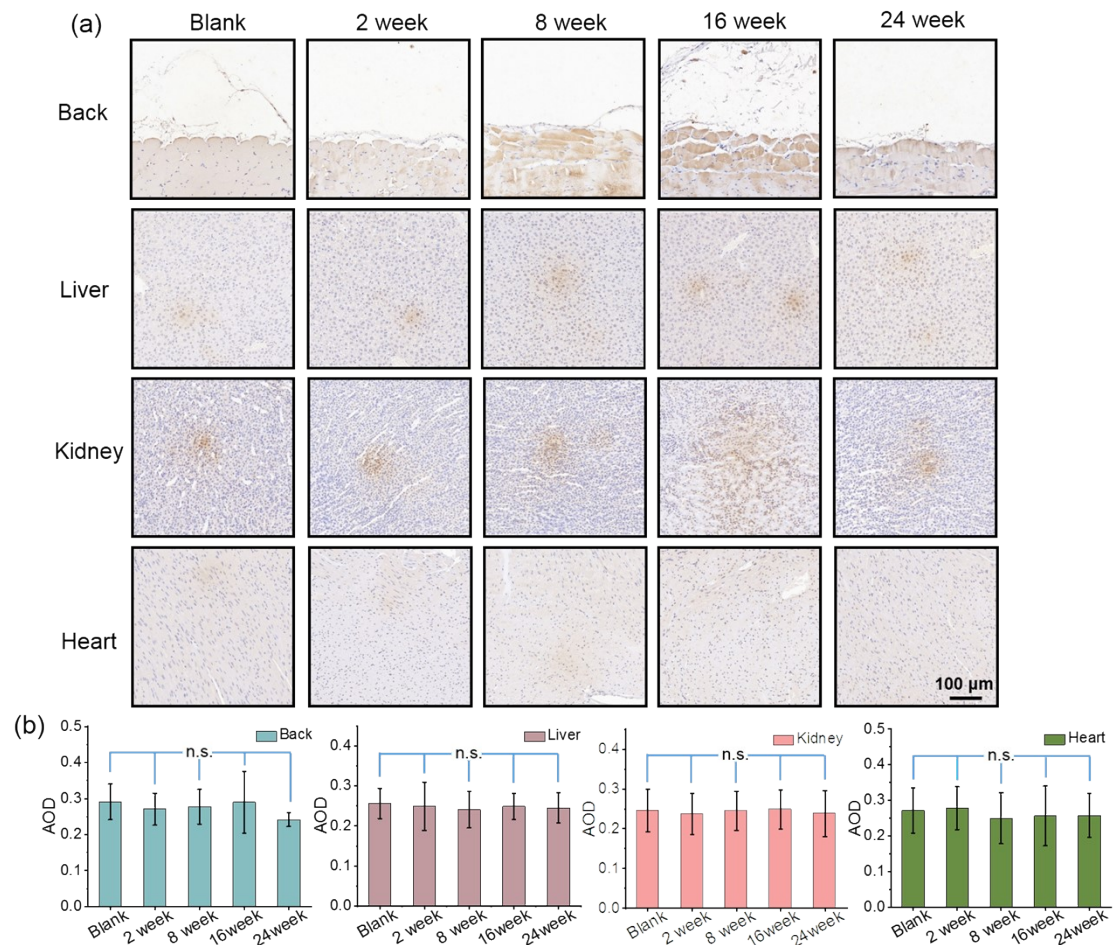


Figure S3. Inflammatory marker staining and cytokine profiling analysis after implantation. (a) Immunohistochemical staining of inflammatory markers (IL-6) in tissues surrounding BPE and liver, kidney, heart tissues, cells stained by inflammatory markers show brown color. (b) Quantification of inflammatory marker expression (ns means no significant difference, the full-images of back tissue can be found in Figure S4).

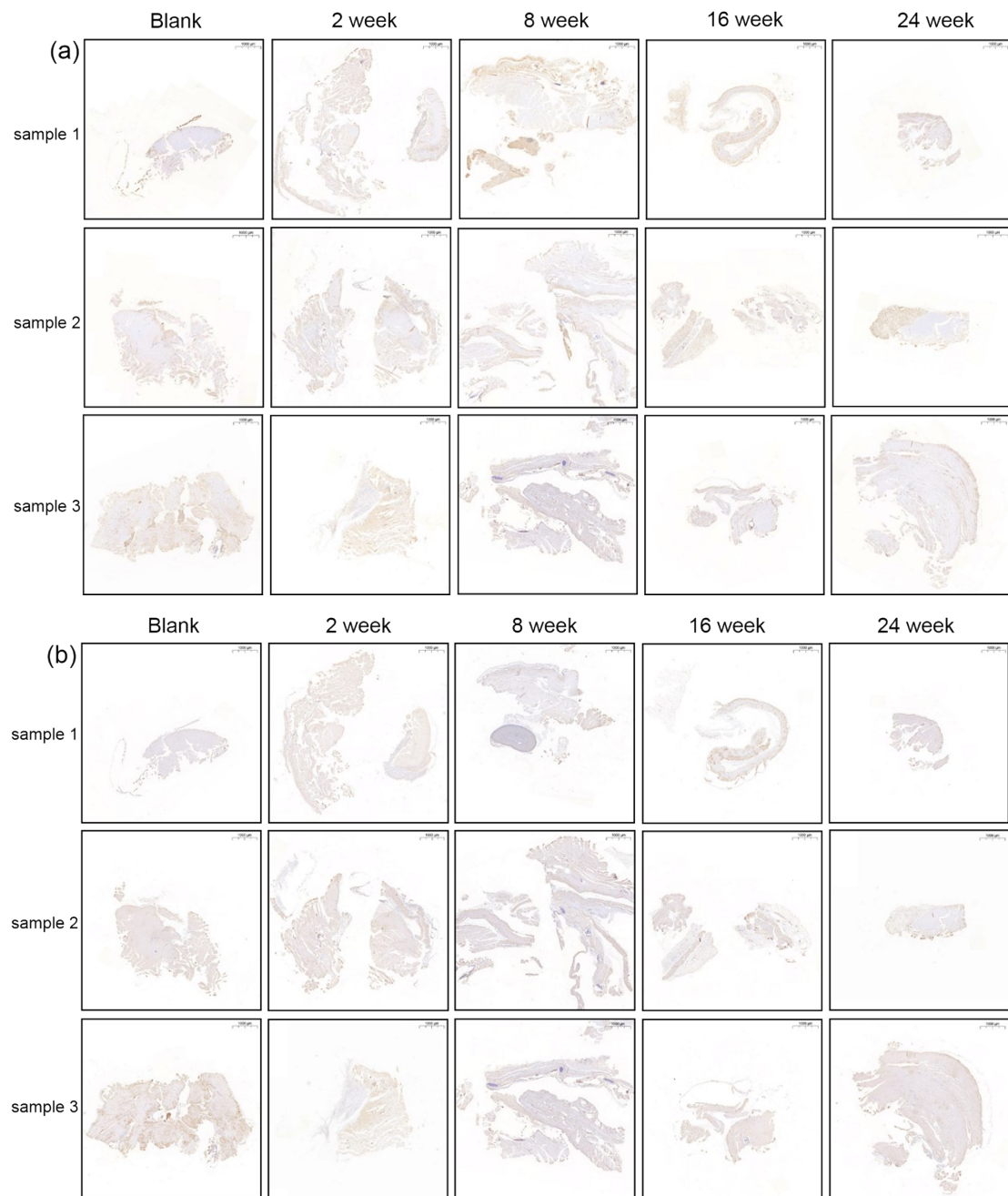


Figure S4. The full-images of inflammatory marker staining of the back tissue after implantation, each column is a parallel sample from the same time point. (a) Immunohistochemical staining of inflammatory markers (TNF-a) in tissues under different time, cells stained by inflammatory markers show brown color. (b) Immunohistochemical staining of inflammatory markers (IL-6) in tissues under different time, cells stained by inflammatory markers show brown color.