

Supplementary Information

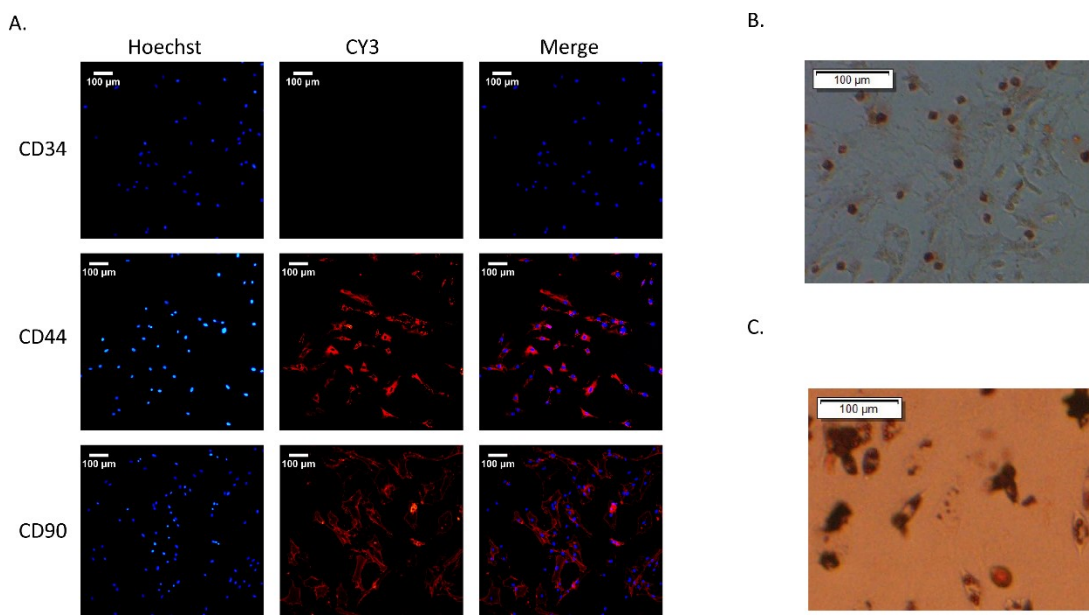


Figure S1 Characterization of bone marrow mesenchymal stem cells. (A) Expression of BMSC markers detected by immunofluorescence. (B) and (C) Analyses for determining the ability of osteogenic differentiation (B) and adipogenic differentiation (C). (Scale bar: 100 µm)

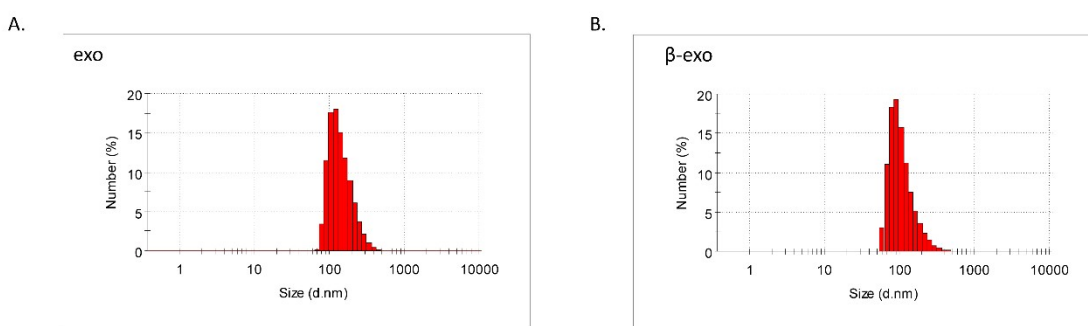


Figure S2 Particle size distribution of exosomes (A) and β -exos (B).

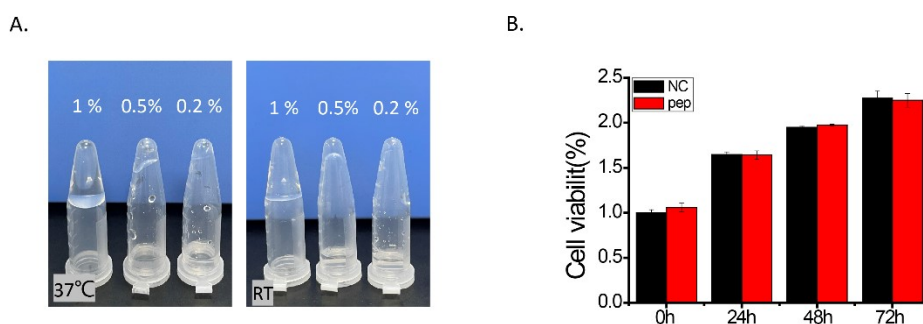


Figure S3 Gelation assessment of RADA16RGD peptide. (A) Gelation of different concentrations of RADA16RGD peptide at room temperature and 37°C. (B) Cytotoxicity assessment of RADA16RGD peptide hydrogel extract.

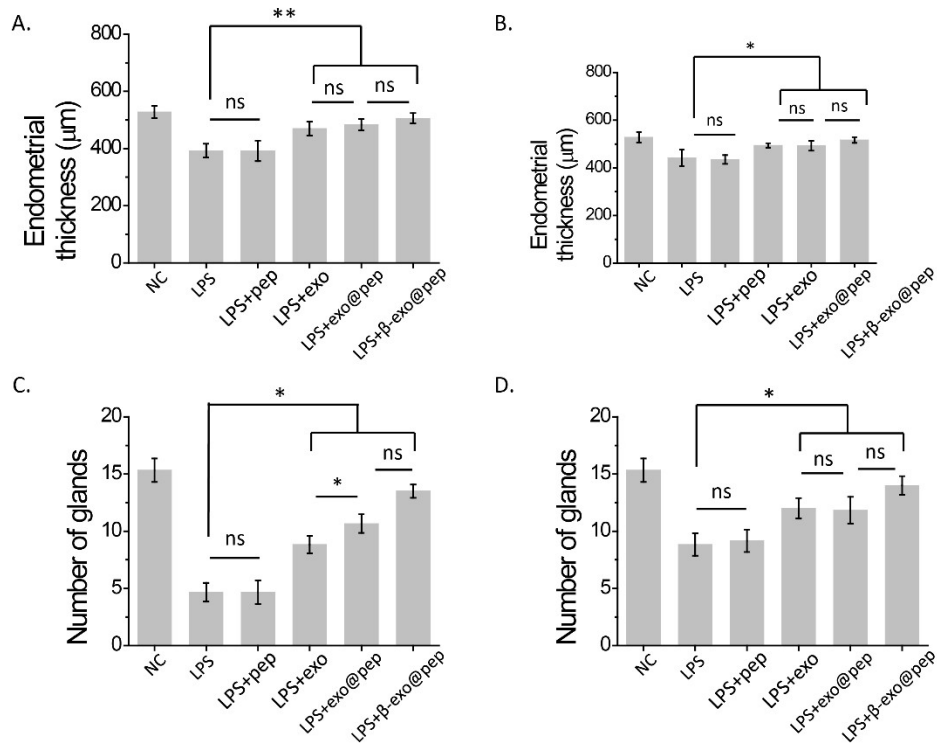


Figure S4 Regeneration ability of the composite hydrogel. (A) and (B) are endometrial thickness in each group after treatment for 7 days and 14 days, measured from Figure 6. (C) and (D) are number of glands in each group after treatment for 7 days and 14 days, measured from Figure 6. (* $p < 0.05$ and ** $p < 0.01$)