

Supplementary Information

Potent Intrinsic Bactericidal Activity of Novel Copper Telluride Nano-grape Clusters with Facile Harvest

Yanwen Zhou, †^{a, b} Haozhuo Lei, †^b Meng Wang,^b Yanbin Shi, ^{*b} and Zhaohui Wang^{*a, b}

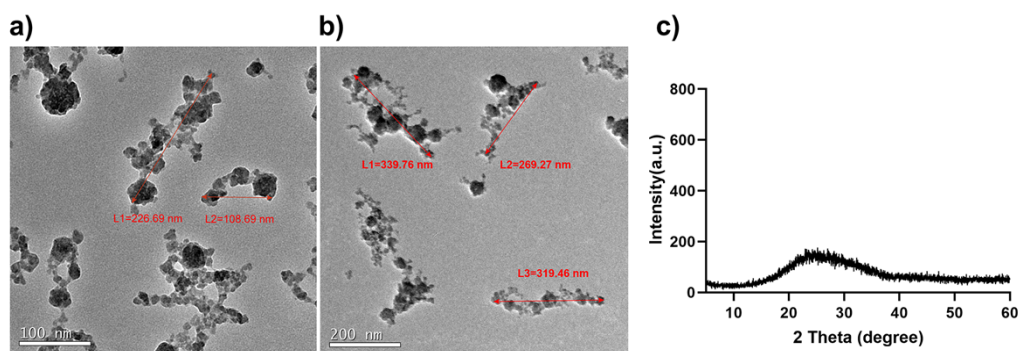


Figure S1. a)-b) TEM images of CuTe nano grape-clusters with the lengths of representative clusters calculated; c) XRD pattern of CuTe.

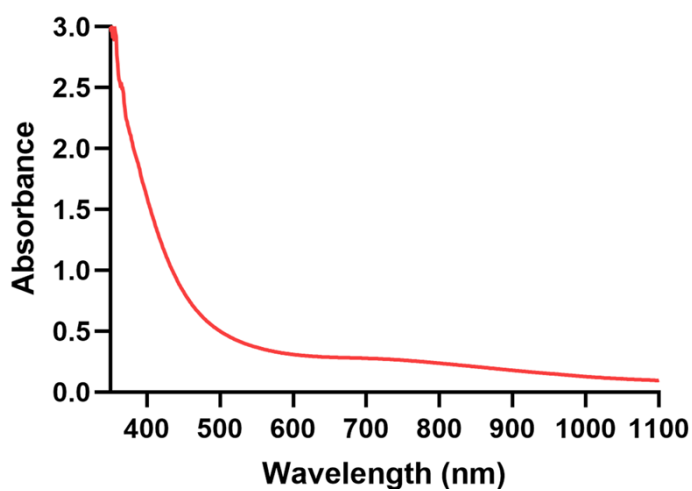


Figure S2. Absorbance spectrum of CuTe.

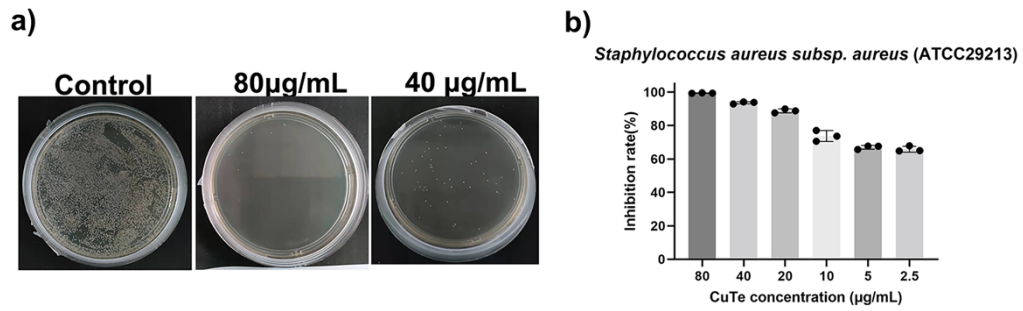


Figure S3. a) agar plates images of *S. aureus* treated with CuTe of different concentrations; b) micro-plate determination of inhibition rates of CuTe of different concentrations.

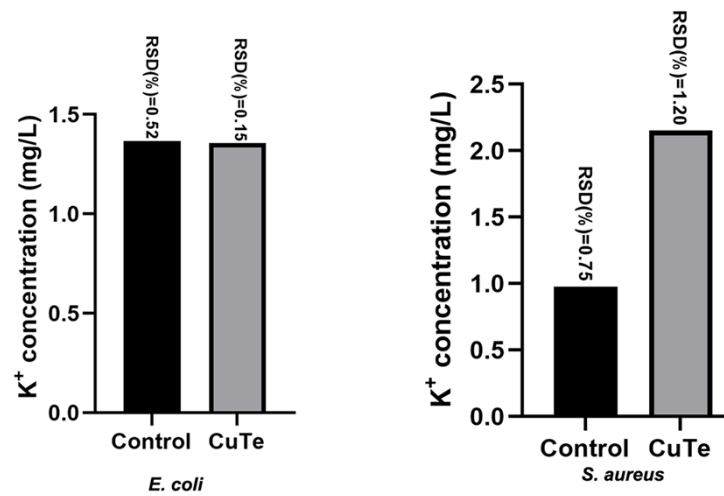


Figure S4. Extra-cellular K⁺ quantification.

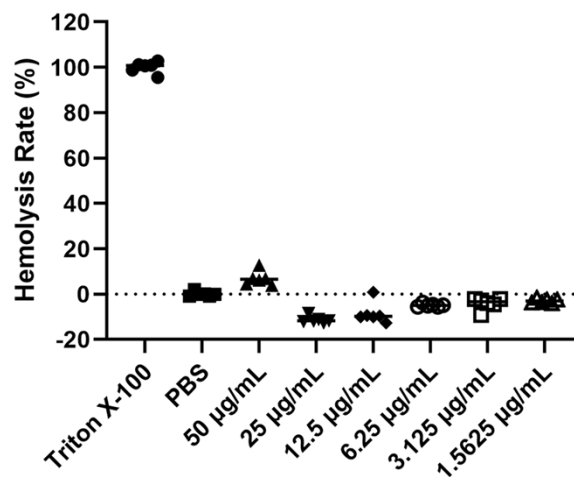


Figure S5. Hemolysis ratio of CuTe of different concentrations.