

Supplementary file

Fig. S1. The energy changes and the convergence of optimized structures of BNN.

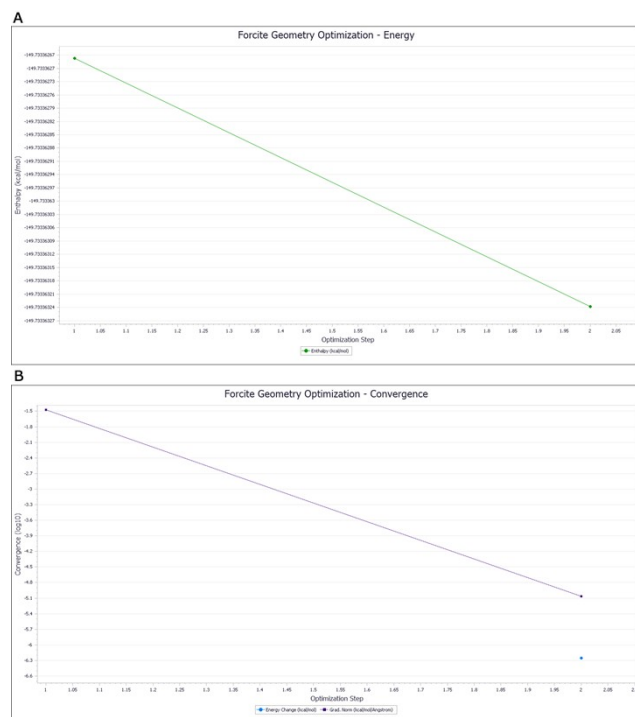


Fig. S2. The energy changes and the convergence of optimized structures of TiO_2 .

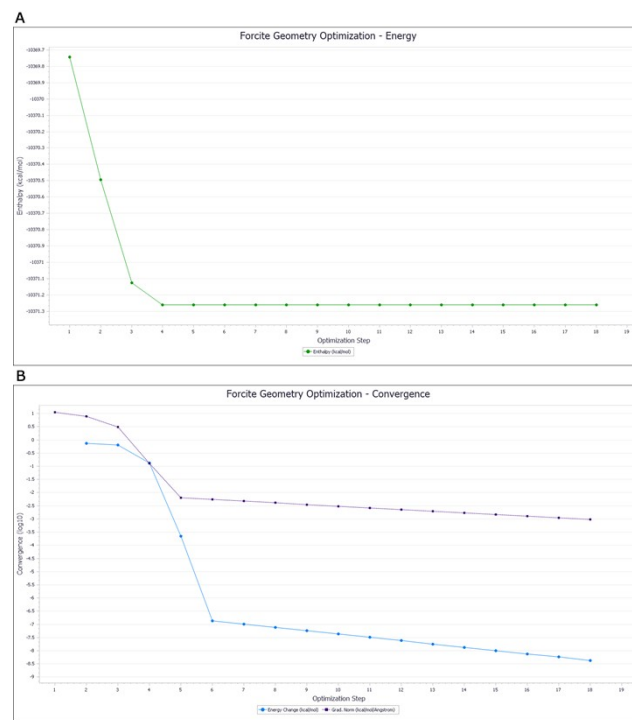


Fig. S3. The energy and temperature changes of optimized structures of layers.

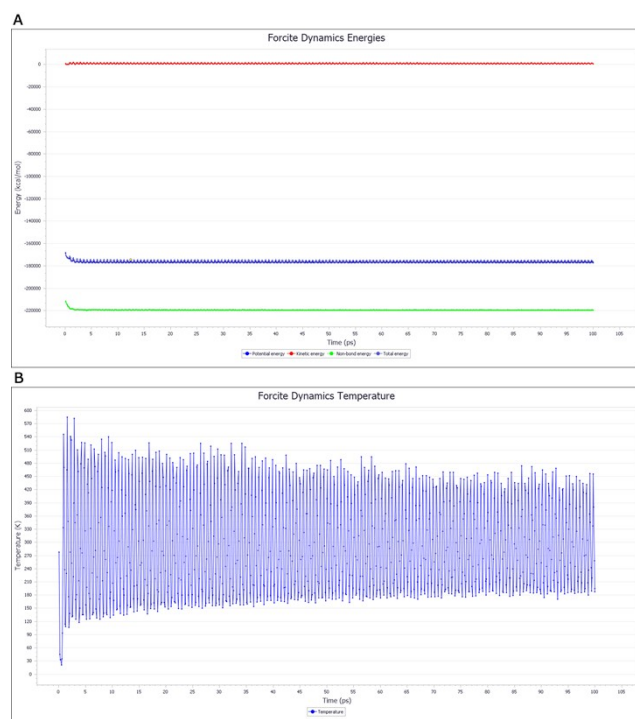


Fig. S4. EDS mapping analysis of O (A) and the overlapping map of N, B, O (B) corresponding to Fig.2B.

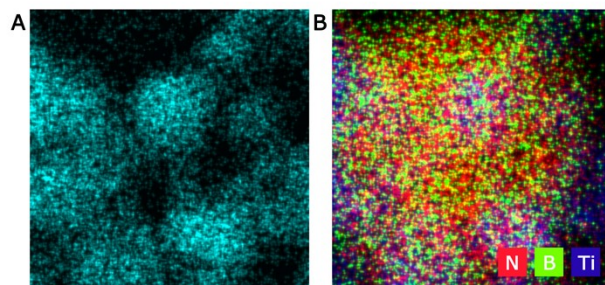


Fig. S5. Water absorption rates of modified flow resin for 7 d, 14 d, 21 d, 28 d.

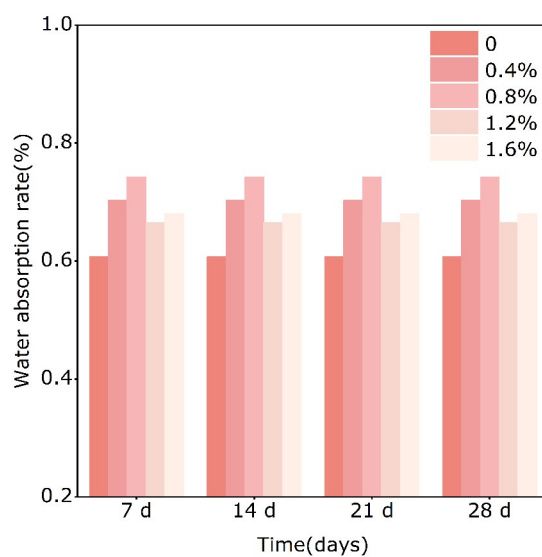


Table. S1. Dissolution rates of modified flow resin for 7 d, 14 d, 21 d, 28 d.

Groups(BNNs/TiO ₂ wt%)	Solubility (%)			
	7 d	14 d	21 d	28 d
0	0	0	0	0
0.4	0	0	0	0
0.8	0	0	0	0
1.2	0	0	0	0
1.6	0	0	0	0

Fig. S6. Cell survival rate.

