

## Electronic Supplementary Information

### Manganese Prussian blue nanozymes with antioxidant capacity prevent acetaminophen-induced acute liver injury

Chongqing Chen<sup>a#</sup>, Haitao Wu<sup>bc#</sup>, Qianhui Li<sup>d#</sup>, Menghua Liu<sup>a</sup>, Fan Yin<sup>a</sup>, Miaomiao Wu<sup>b</sup>, Xiaoli Wei<sup>b</sup>,  
Hua Wang<sup>b\*</sup>, Zhengbao Zha<sup>c\*</sup>, and Fei Wang<sup>d\*</sup>

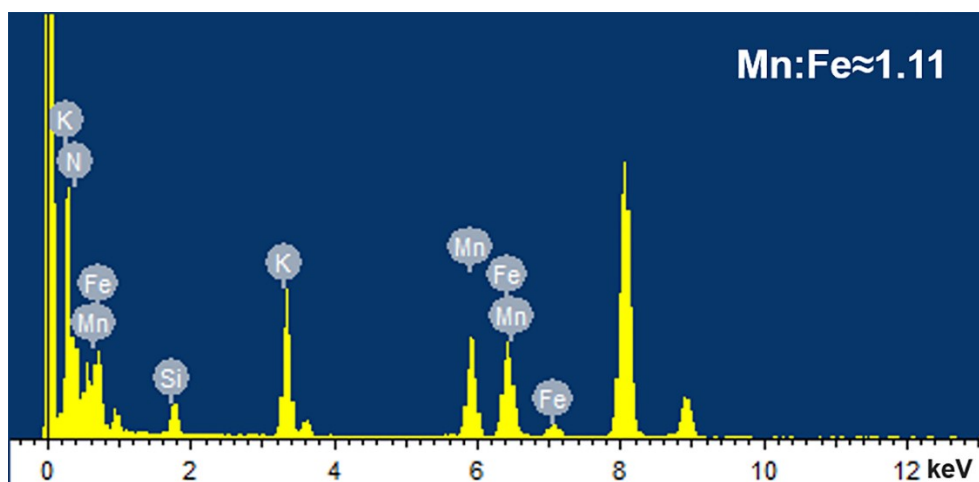
<sup>a</sup> School of Pharmacy, Inflammation and Immune Mediated Diseases Laboratory of  
Anhui Province, Anhui Medical University, Hefei 230032, China;

<sup>b</sup> Department of Oncology, the First Affiliated Hospital of Anhui Medical University, Hefei 230022,  
China;

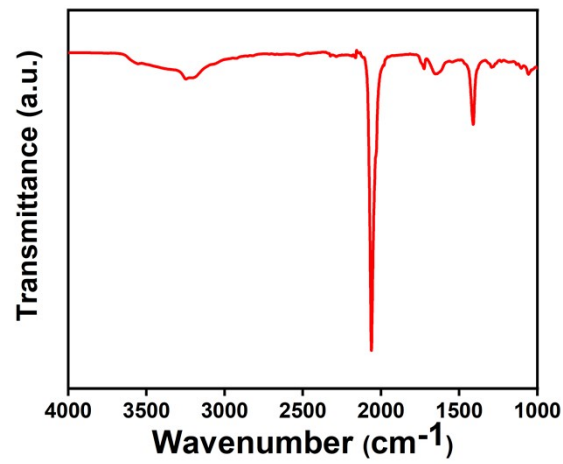
<sup>c</sup> School of Food and Biological Engineering, Hefei University of Technology, Hefei 230009, China.

<sup>d</sup> China Guangdong Provincial Key Laboratory of Digestive Cancer Research and The  
Seventh Affiliated Hospital of Sun Yat-Sen University, Shenzhen, Guangdong 518107, China;

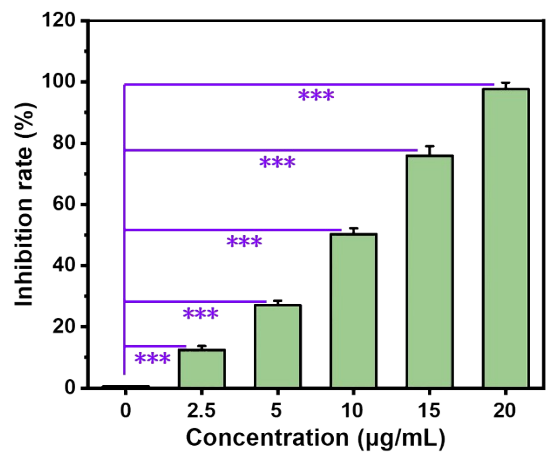
\*Corresponding authors. E-mail: [wanghua@ahmu.edu.cn](mailto:wanghua@ahmu.edu.cn); [zbzha@hfut.edu.cn](mailto:zbzha@hfut.edu.cn);  
[wangf323@mail.sysu.edu.cn](mailto:wangf323@mail.sysu.edu.cn);



**Fig. S1** Energy Dispersive X-ray spectroscopy (EDX) of MPBZs.

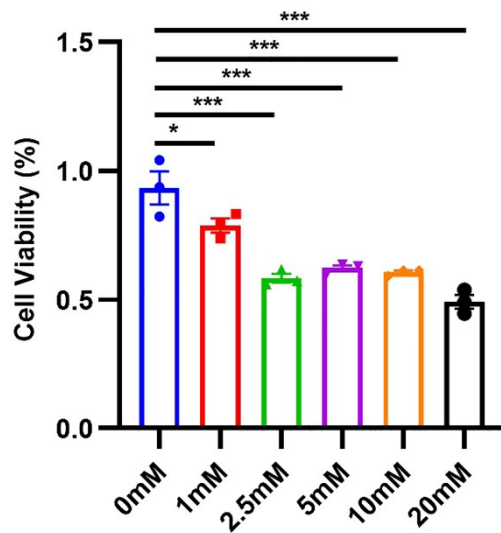


**Fig. S2** FTIR result of MPBZs.

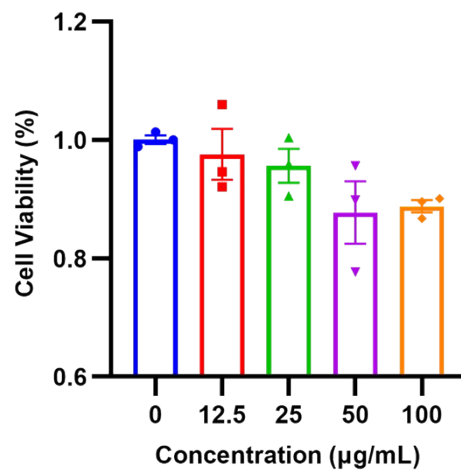


**Fig. S3** ABTS radical scavenging rate (n = 3/group). Data shown as mean ± SEM.

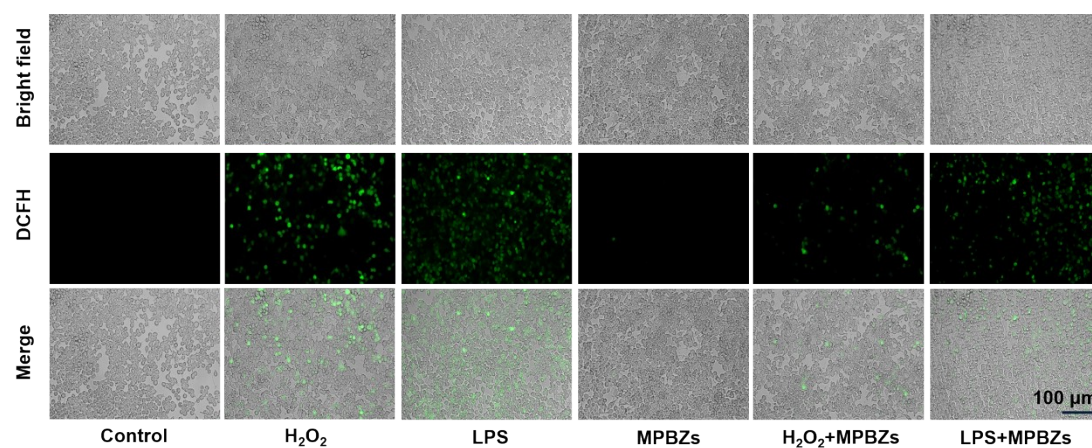
(\*\*\* $P < 0.001$ ).



**Fig. S4** The effect of APAP on the survival rate of AML12 cells. Data shown as mean  $\pm$  SEM. (\* $P$ <0.05, \*\*\* $P$ <0.001).



**Fig. S5** Cytotoxic effects of MPBZs on RAW264.7 cells (n = 3/group).



**Fig. S6** Detection of ROS scavenging by MPBZs after H<sub>2</sub>O<sub>2</sub> and LPS treatment in RAW264.7 cells using DCFH-DA staining, scale bar = 100 μm.

**Table. S1** Primer sequences used in the RT-QPCR analysis.

Name	Forward primer	Reverse primer
<i>Gapdh</i>	TCAACAGCAACTCCCACCTCTCCA	ACCTGTTGCTGTAGCCGTATTCA
<i>Tnfa</i>	CAGGCGGTGCCTATGTCTC	CGATCACCCCGAAGTTCAGTAG
<i>Il1<math>\beta</math></i>	GAAATGCCACCTTTTGACAGTG	TGGATGCTCTCATCAGGACAG
<i>Il6</i>	CTGCAAGAGACTCCATCCAG	AGTGGTATAGACAGGTCTGTTGG
<i>Ly6c1</i>	TGCGTTGCTCTGGAGATAGA	CAGAGTAGTGGGGCAGATGG
<i>Hmgbl</i>	GCTGACAAGGCTCGTTATGAA	CCTTTGATTTTGGGGCGGTA
<i>Cxcl1</i>	ACTGCACCCAAACCGAAGTC	TGGGGACACCTTTTAGCATCTT
<i>Nrf2</i>	CTTTAGTCAGCGACAGAAGGAC	AGGCATCTTGTTTGGGAATGTG
<i>Keap1</i>	CGGGGACGCAGTGATGTATG	TGTGTAGCTGAAGGTTCCGGTTA
<i>Hol</i>	AGGTACACATCCAAGCCGAGA	CATCACCAGCTTAAAGCCTTCT
<i>Nqo1</i>	AGGATGGGAGGGTACTCGAATC	TGCTAGAGATGACTCGGGAAGG