

Supplementary material

Synthesis, Structure and Magnetic Properties of Two Bis(oxalato)cuprate(II) Salts with Pyridinium Type Counter Ions

Cyrielle L.F. Dazem, A. Ken Inge, Dominique Luneau, Lars Öhrström, and Justin Nenwa

Fig. S1 Cu-NRH ₂ distances found in the CSD ($r < 10\%$, no errors and no disorder)	2
Fig. S2 IR spectra of left: 1 and right: 2	2
Fig. S3 UV-vis spectra of left: 1 and right: 2	2
Fig. S4 Experimental and simulated PXRD spectra of left: 1 and right: 2	3
Fig. S5 EDS spectra of left 1 and right 2	3
Fig. S6 Top: TGA and DSC of 1 and 2 . Bottom PXRD patterns of TGA residuals after heating to 800°C (in red) of left 1 and right 2 compared to the expected residual product CuO (in blue).....	3
Fig. S7 . The zigzag Cu(II) chain that runs along the crystallographic z-axis, Cu...Cu = 5.348 Å, in C ₁₃ H ₁₆ N ₂ [Cu(C ₂ O ₄) ₂] 2	4
Fig. S8 . The opposite charges (red for the pyridinium cation and blue for the complex anion) form a kind of chess board pattern in the xy-plane in C ₁₃ H ₁₆ N ₂ [Cu(C ₂ O ₄) ₂] (2) shown by a space filling model. The other way to think about the organisation in the xy-plane is weak hydrogen bonds.	4
Fig. S9 . Scanning electron microscopy of 1 and 2 (Cu-1 and Cu-2).	4

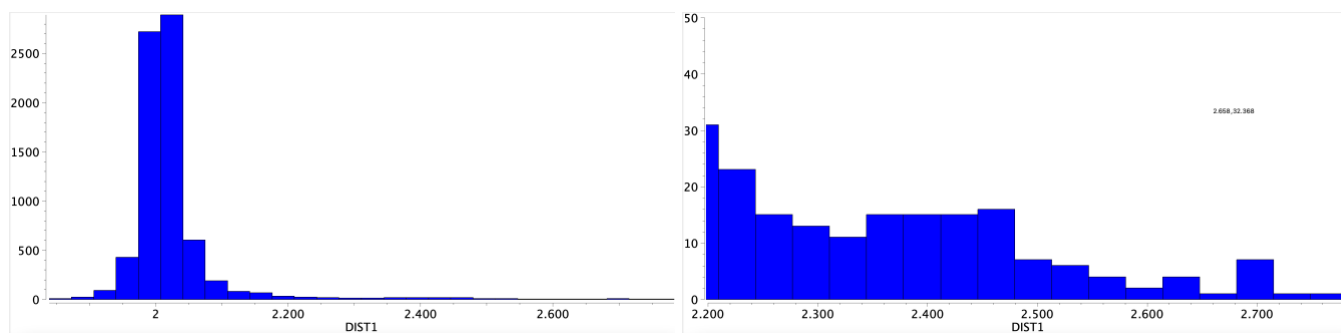


Fig. S1 Cu-NRH₂ distances found in the CSD ($r < 10\%$, no errors and no disorder)

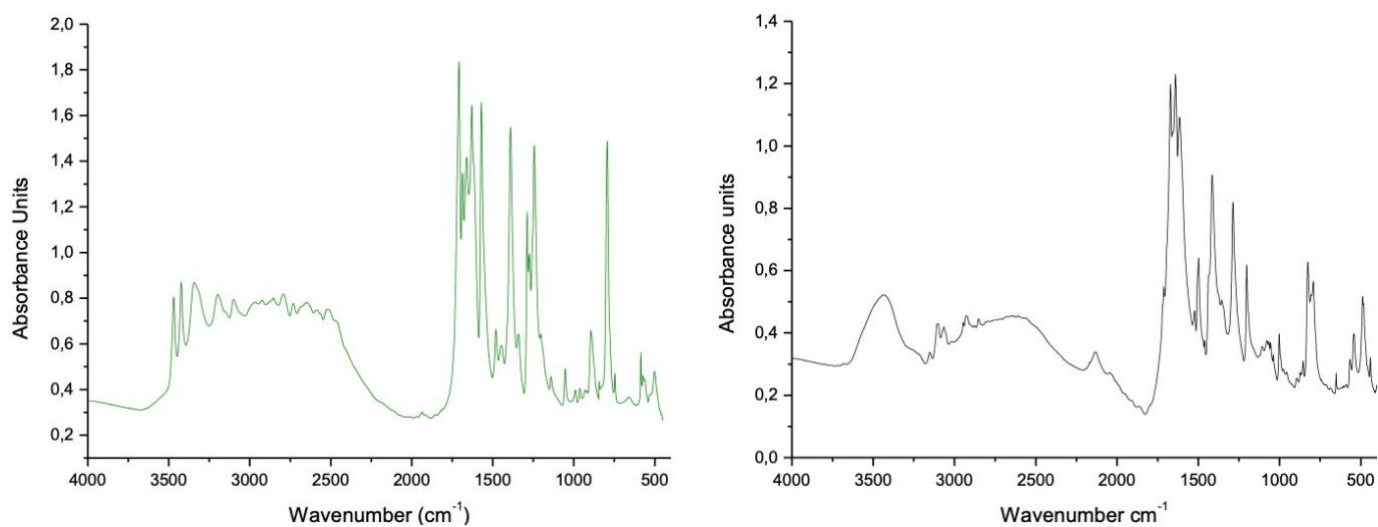


Fig. S2 IR spectra of left: 1 and right: 2.

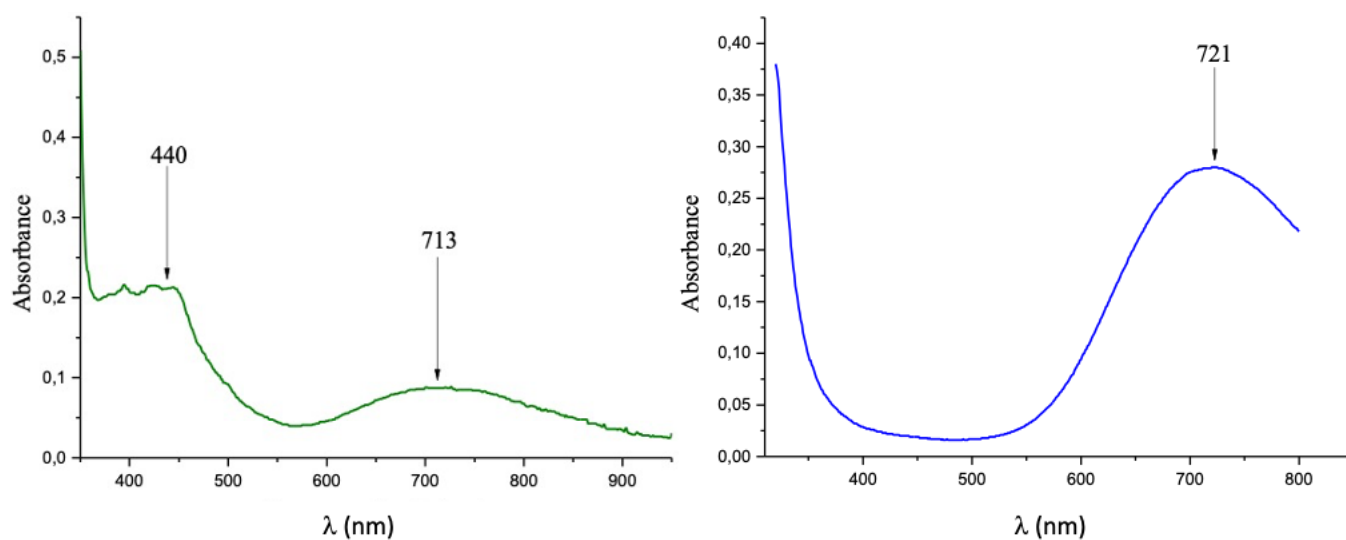


Fig. S3 UV-vis spectra of left: 1 and right: 2.

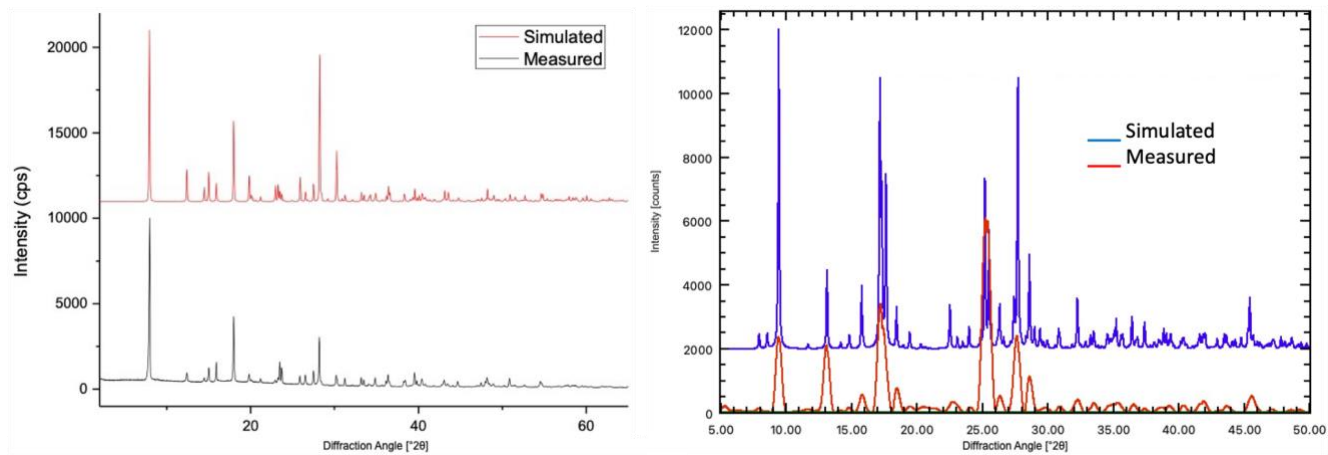


Fig. S4 Experimental and simulated PXRD spectra of left: **1** and right: **2**.

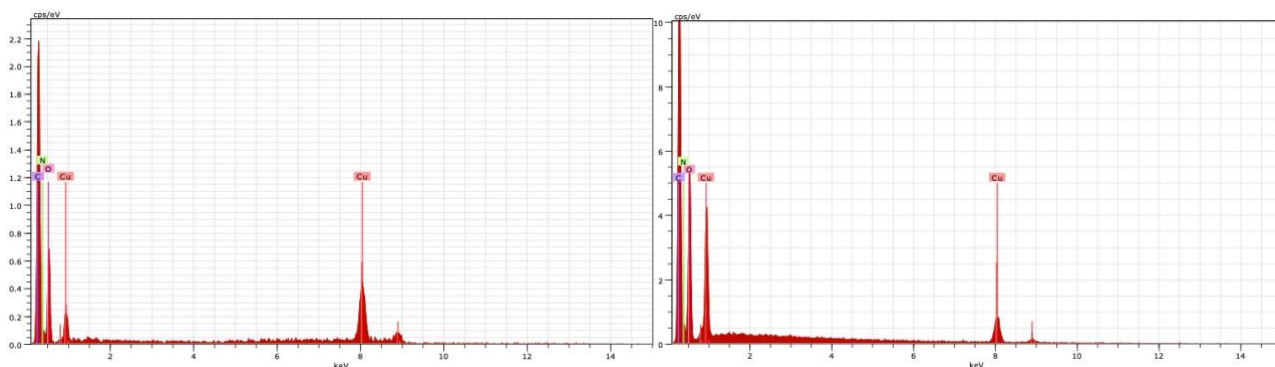


Fig. S5 EDS spectra of left **1** and right **2**.

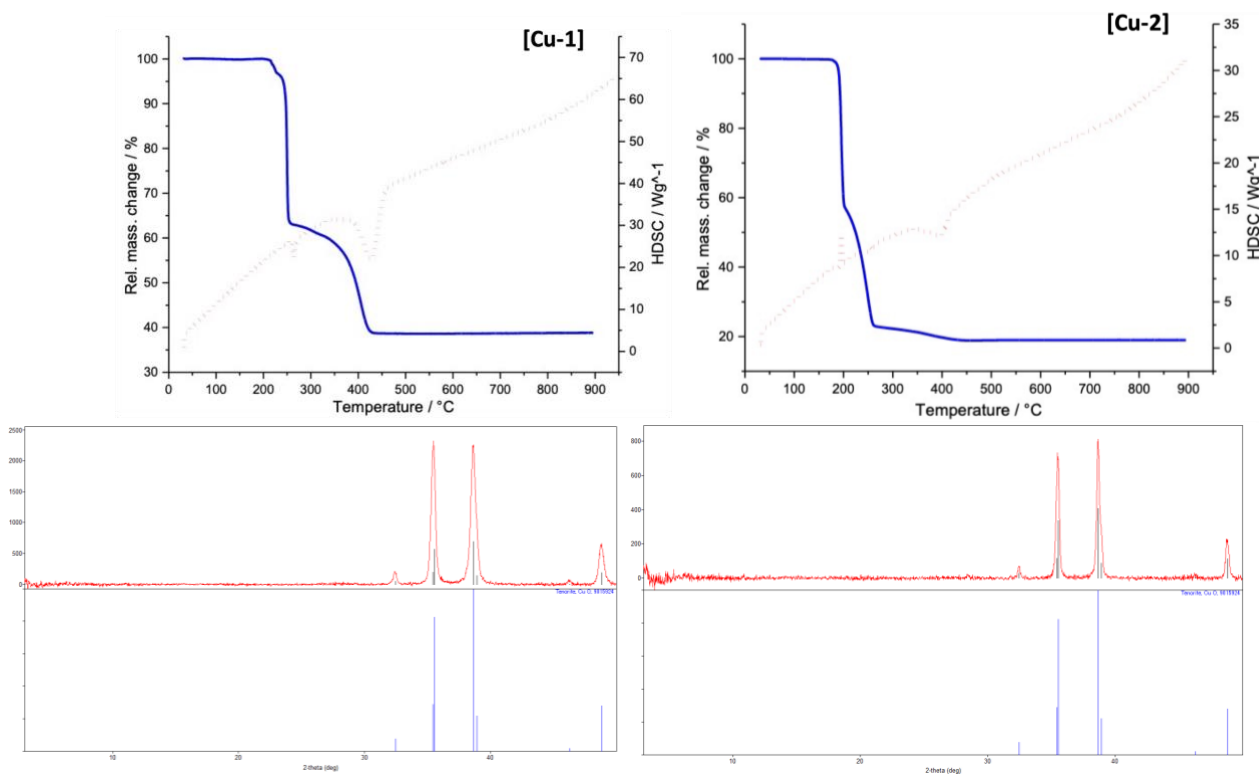


Fig. S6 Top: TGA and DSC of **1** and **2**. Bottom PXRD patterns of TGA residuals after heating to 800°C (in red) of left **1** and right **2** compared to the expected residual product CuO (in blue).

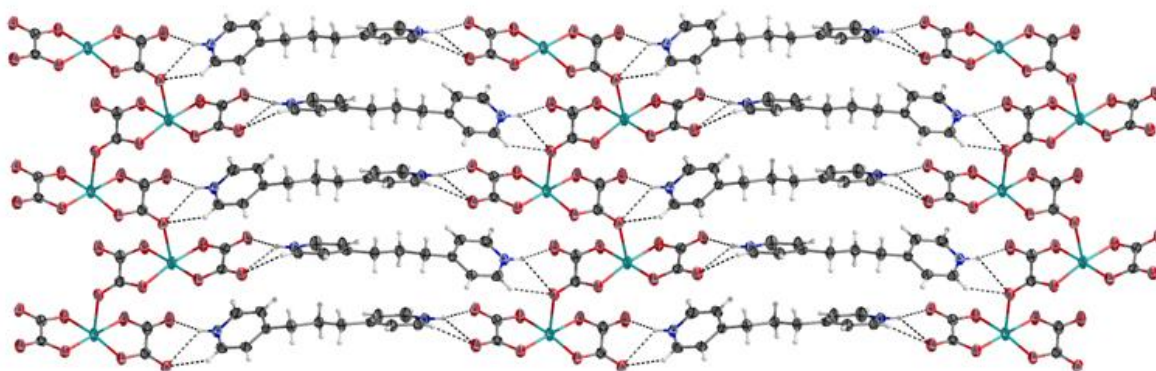


Fig. S7. The zigzag Cu(II) chain that runs along the crystallographic z-axis, Cu...Cu = 5.348 Å, in $C_{13}H_{16}N_2[Cu(C_2O_4)_2]$ (**2**).

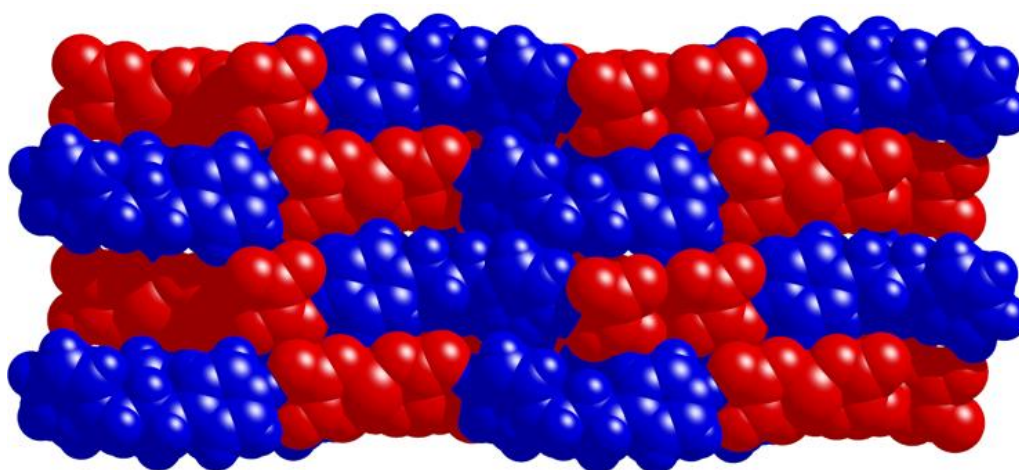


Fig. S8. The opposite charges (red for the pyridinium cation and blue for the complex anion) form a kind of chess board pattern in the xy-plane in $C_{13}H_{16}N_2[Cu(C_2O_4)_2]$ (**2**) shown by a space filling model. The other way to think about the organisation in the xy-plane is weak hydrogen bonds.

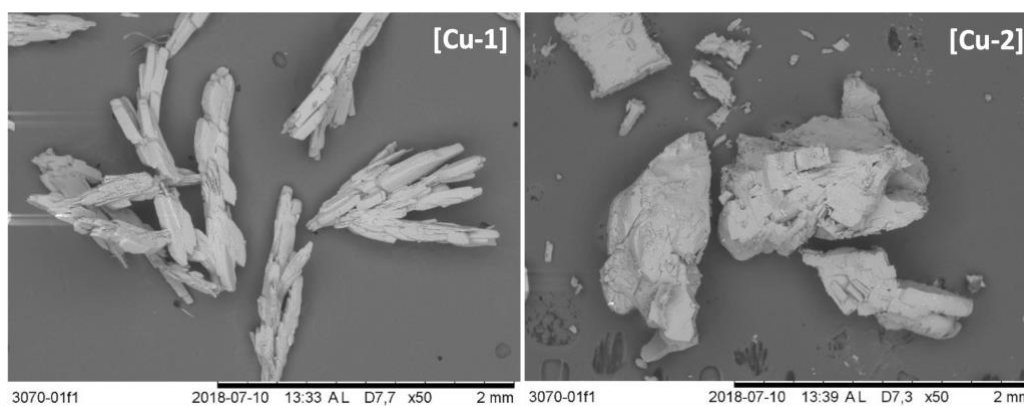


Fig. S9. Scanning electron microscopy of **1** and **2** (Cu-1 and Cu-2).