

## Supplementary Information

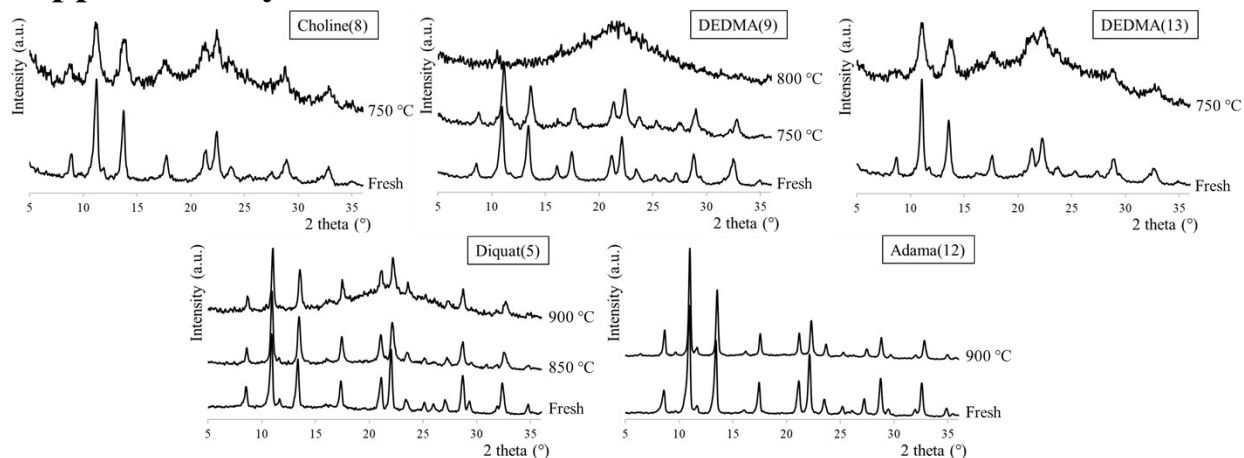
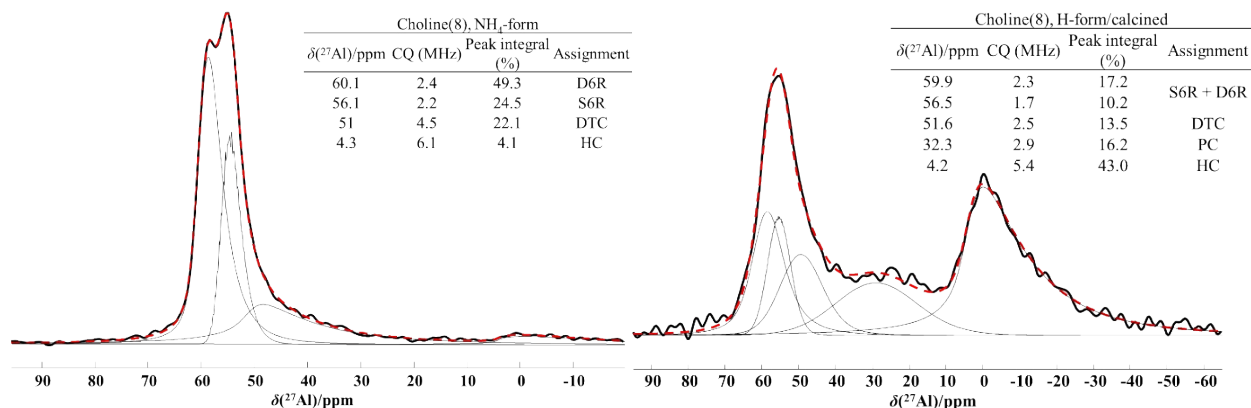


Figure S1 XRD diffractogram of fresh and hydrothermally aged Cu loaded LEV zeolite catalysts.

Table S1 NO<sub>x</sub> conversion in function of temperature of all Cu loaded LEV zeolite catalysts.

Reaction T (°C)	NO <sub>x</sub> conversion (%)				
	Choline(8)	DEDMA(9)	DEDMA(13)	Diquat(5)	Adama(12)
150	44	35	28	41	11
175	83	69	51	79	7
200	100	96	88	95	8
250	100	100	98	100	38
300	94	93	90	94	72
350	87	86	82	82	69
400	86	84	80	78	69
450	85	81	77	78	67
150	42	37	24	39	11



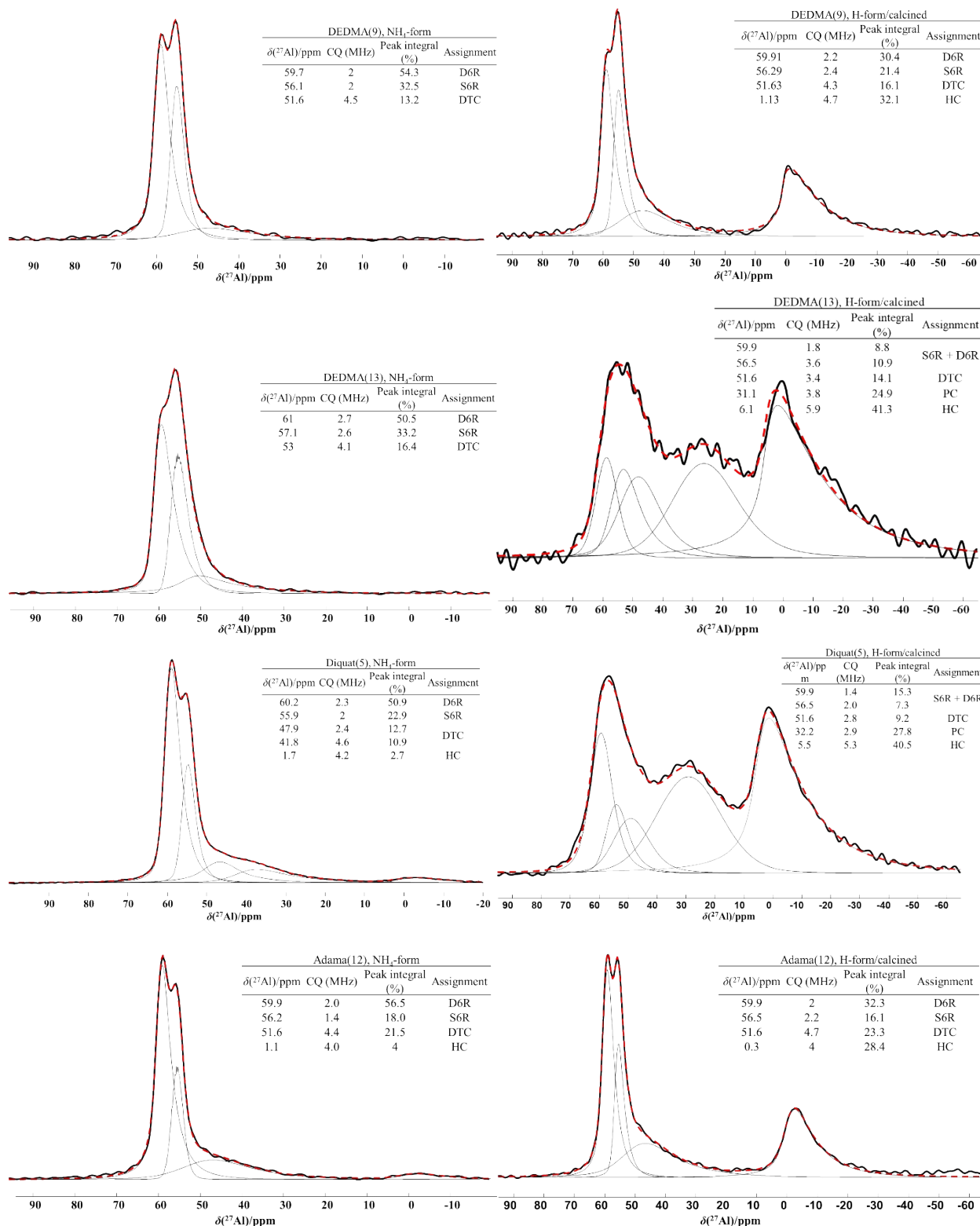


Figure S2 Signal decomposition of  $^{27}\text{Al}\{^1\text{H}\}$  MAS NMR of Choline(8), DEDMA(9), DEDMA(13), DIQUAT(5) and ADAMA(12) in both their  $\text{NH}_4^-$  and H-/calced form recorded at 11.74 T (500 MHz) with MAS frequency of 15 kHz. Bold black lines represent the original spectrum, gray lines represent the individual decomposition functions and red dashed lines represent the sum of the decomposition functions. Codes used in inserted tables are used as follows: D6R represents double six rings, S6R represents single

six rings, DTC represents distorted tetrahedral coordinated Al, PC represents penta-coordinated Al and HC represents hexa-coordinated Al.