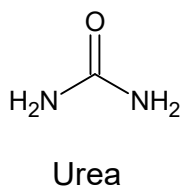
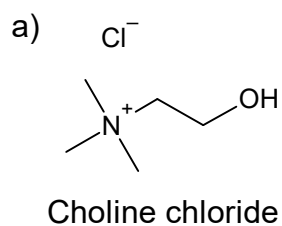


Insights into role of molar ratio and added water in the properties of choline chloride and urea-based eutectic mixtures and their cellulose swelling capacity

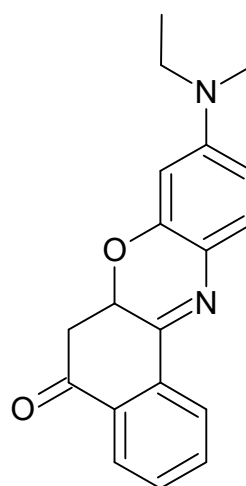
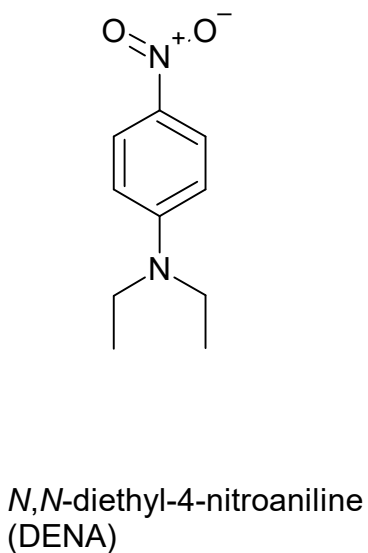
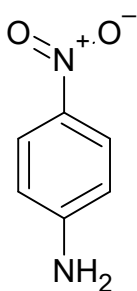
Juho Antti Sirviö^{1*}, Riikka Haataja¹, Anu M. Kantola², Terhi Suopajarvi¹, Henrikki Liimatainen¹

¹ Fibre and Particle Engineering Research Unit, University of Oulu, P.O. Box 4300, 90014 Oulu, Finland E-mail: juho.sirvio@oulu.fi

² NMR Research Unit, University of Oulu, P.O.Box 3000, FIN-90014, Oulu, Finland



b)



c)

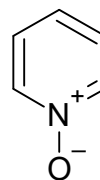
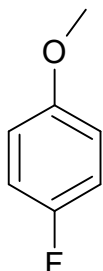
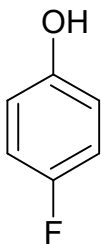


Figure S1. Chemical structure of a) choline chloride and urea, and probes used in b) solvatochromic and c) solvatomagnetic methods.

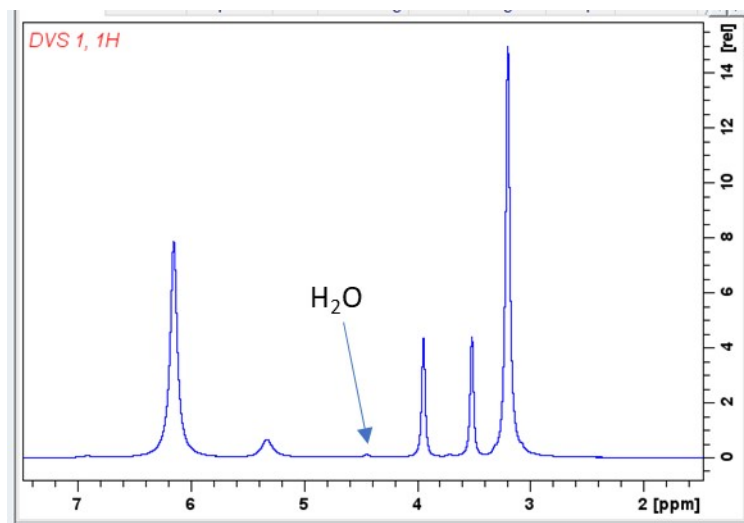
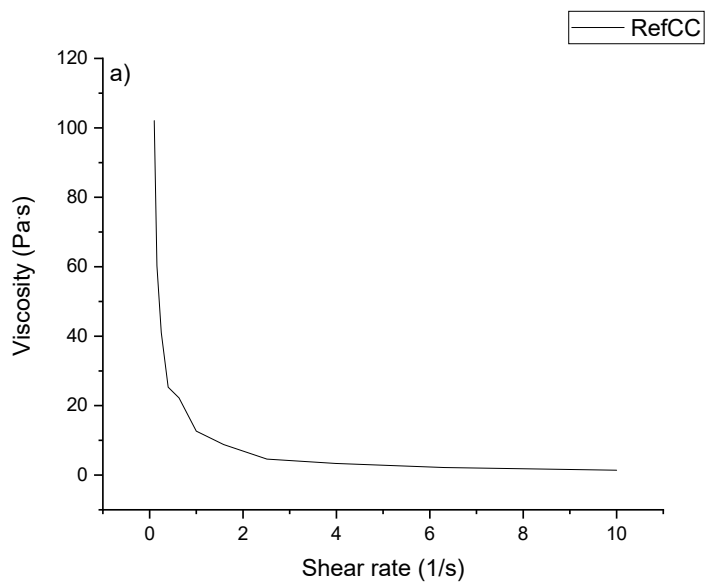


Figure S2. ¹H NMR spectrum of CCU₁₂₋₀ showing small water peak 4.4 ppm.



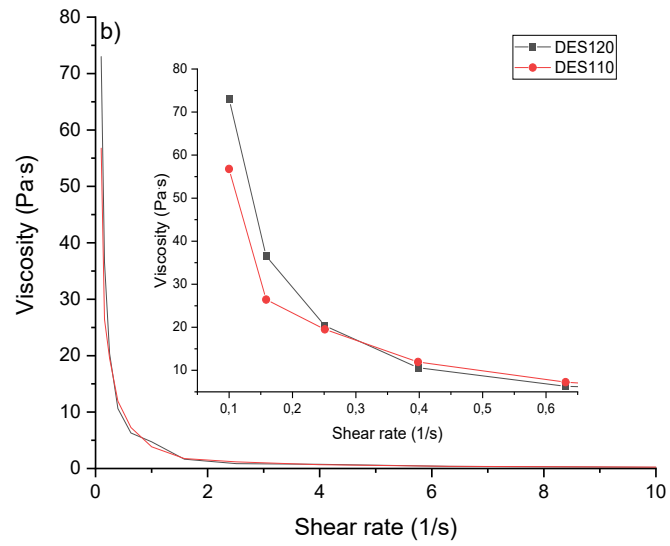


Figure S3. Viscosity of a) choline chloride-water mixture (mola ratio of 1:2) and b) DES120 and DES110 at 100°C