

Effects of Ru Doping on the Structural Stability and Electrochemical Properties of Li_2MoO_3 Cathode Materials for Li-ion Batteries

Zhi-Xin He ^a, Hai-tao Yu ^a, Fei He ^b, Ying Xie ^{a,*}, Lang Yuan ^{a,*}, Ting-feng Yi ^{c,*}

^a Key Laboratory of Functional Inorganic Material Chemistry, Ministry of Education, School of Chemistry and Materials Science, Heilongjiang University, Harbin, 150080, PR China

^b Key Laboratory of Superlight Materials and Surface Technology, Ministry of Education, College of Materials Science and Chemical Engineering, Harbin Engineering University, Harbin 150001, People's Republic of China

^c School of Materials Science and Engineering, Northeastern University, Shenyang, 110819, PR China

*Corresponding author: Ying Xie

E-mail: xieying@hlju.edu.cn (Dr. Ying Xie).

*Corresponding author: Lang Yuan

E-mail: yuanlang@hlju.edu.cn

*Corresponding author: Ting-feng Yi

E-mail: tfyihit@163.com

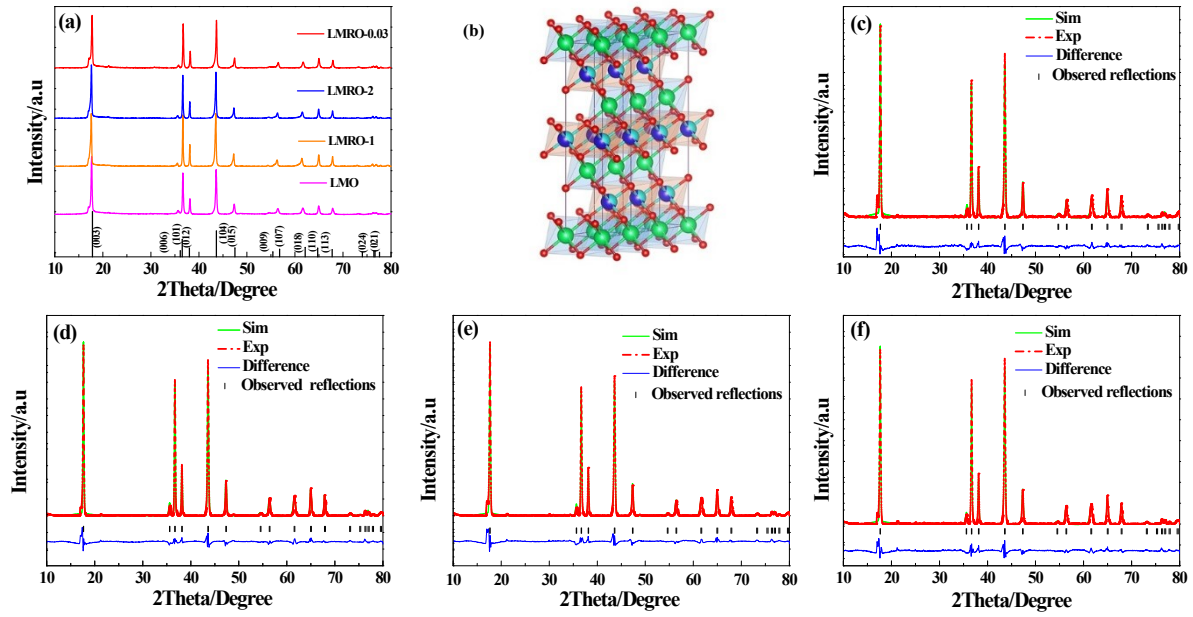


Figure S1 (a) XRD spectra of different samples (b) Li_2MoO_3 structure model (c) LMO, (d) LMRO-1, (e) LMRO-2, (f) LMRO-3 refined XRD spectra.

Table S1 Lattice constants calculated from Rietveld refinement for different samples.

	a	c	c/a
LMO	2.875	15.087	5.247
LMRO-1	2.870	15.110	5.265
LMRO-2	2.866	15.129	5.278
LMRO-3	2.868	15.134	5.276

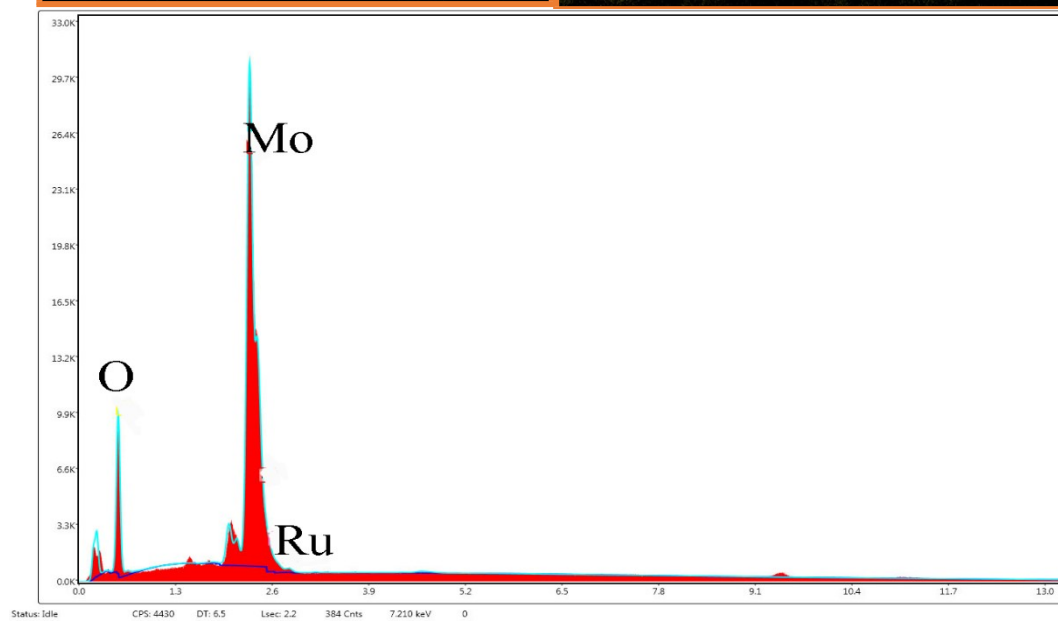
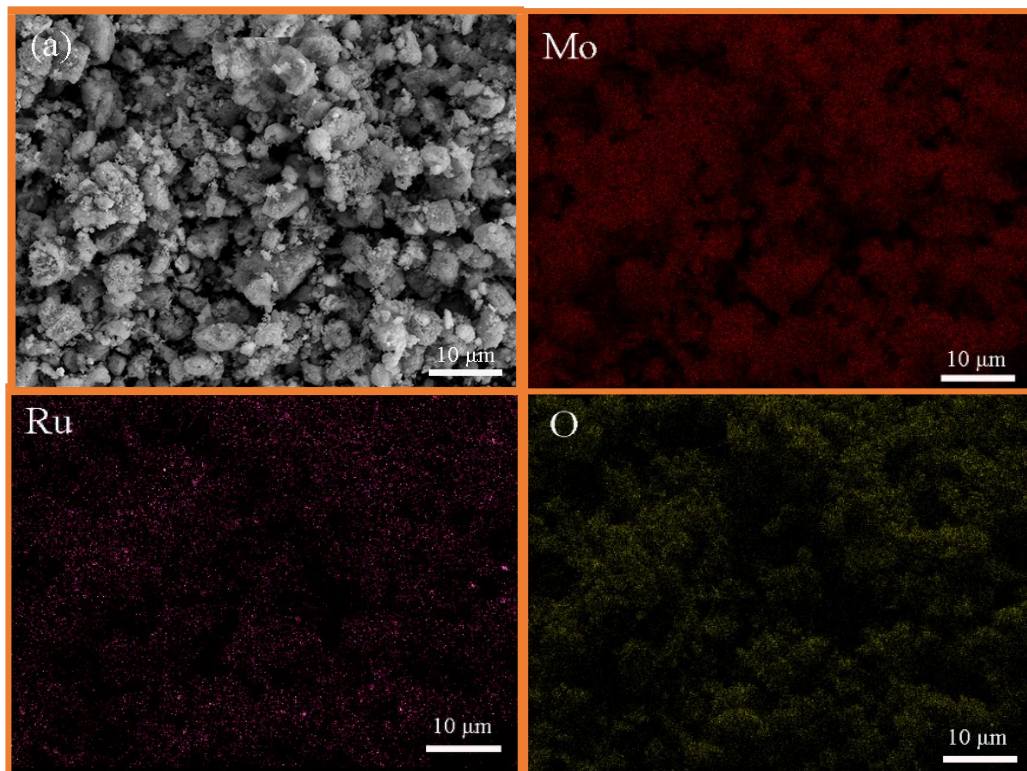


Figure S2 EDS analysis of LMRO-2 samples

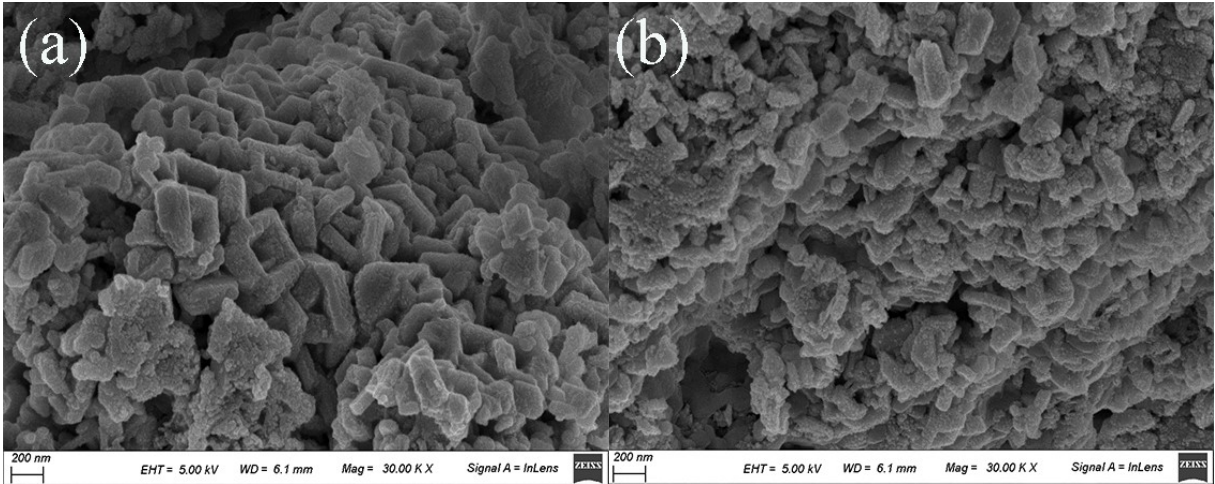


Figure S3 SEM image of (a) LMRO-1, (b) LMRO-3 sample

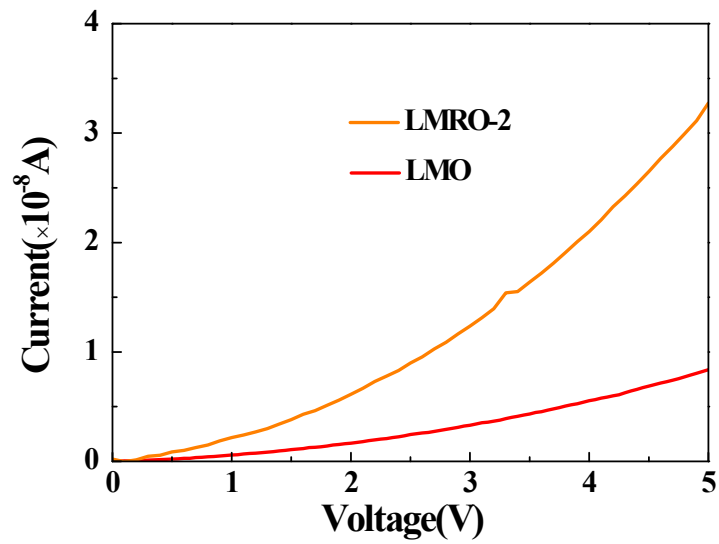
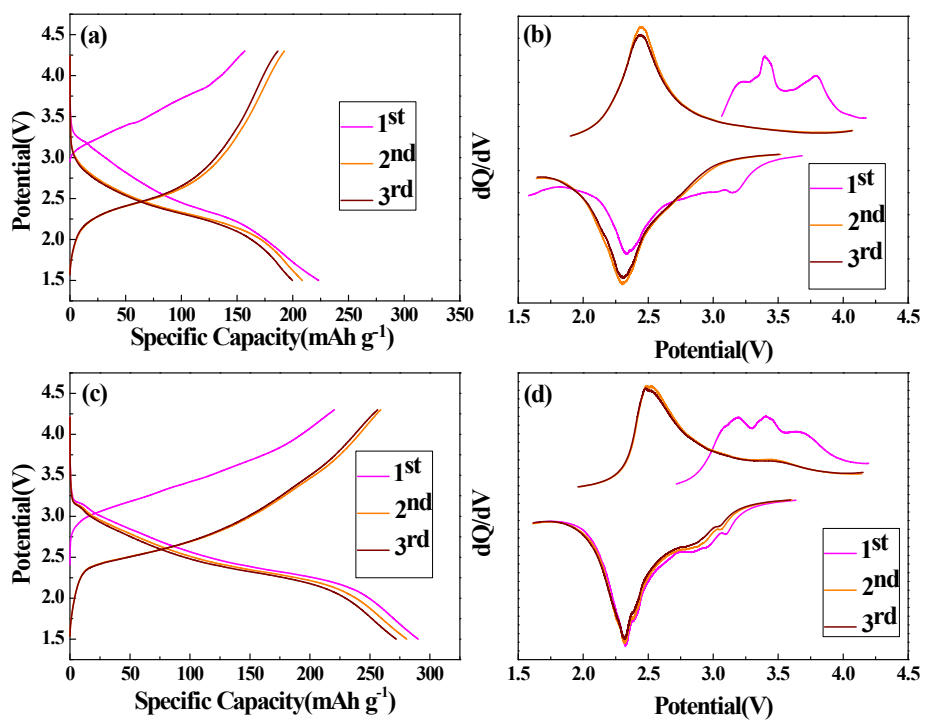


Figure S4 Current-voltage (I-V) curves for LMO and LMRO-2 samples measured at room temperature in air under the same condition.



Fi

Figure S5 (a) and (c) Voltage curves for the initial 3 cycles between 1.5 and 4.3 V for LMO and LMRO-2 samples and (b) and (d) their differential capacity curves.