

# Supplemental Material

## **Interconnected-Graphene Enveloped Titanium Oxide Flower as a Robust Support for Proton Exchange Membrane Fuel Cells**

Gao Jie, Zhongyin Sun, Jie Wang, Chaohua Fan, Xuejing Cui, Jing Liu\*, Luhua Jiang\*

Electrocatalysis & Nanomaterial Laboratory, College of Materials Science & Engineering,

Qingdao University of Science & Technology, Qingdao, 266042, P.R. China

Corresponding authors: liuj955@qust.edu.cn; luhuajiang@qust.edu.cn.

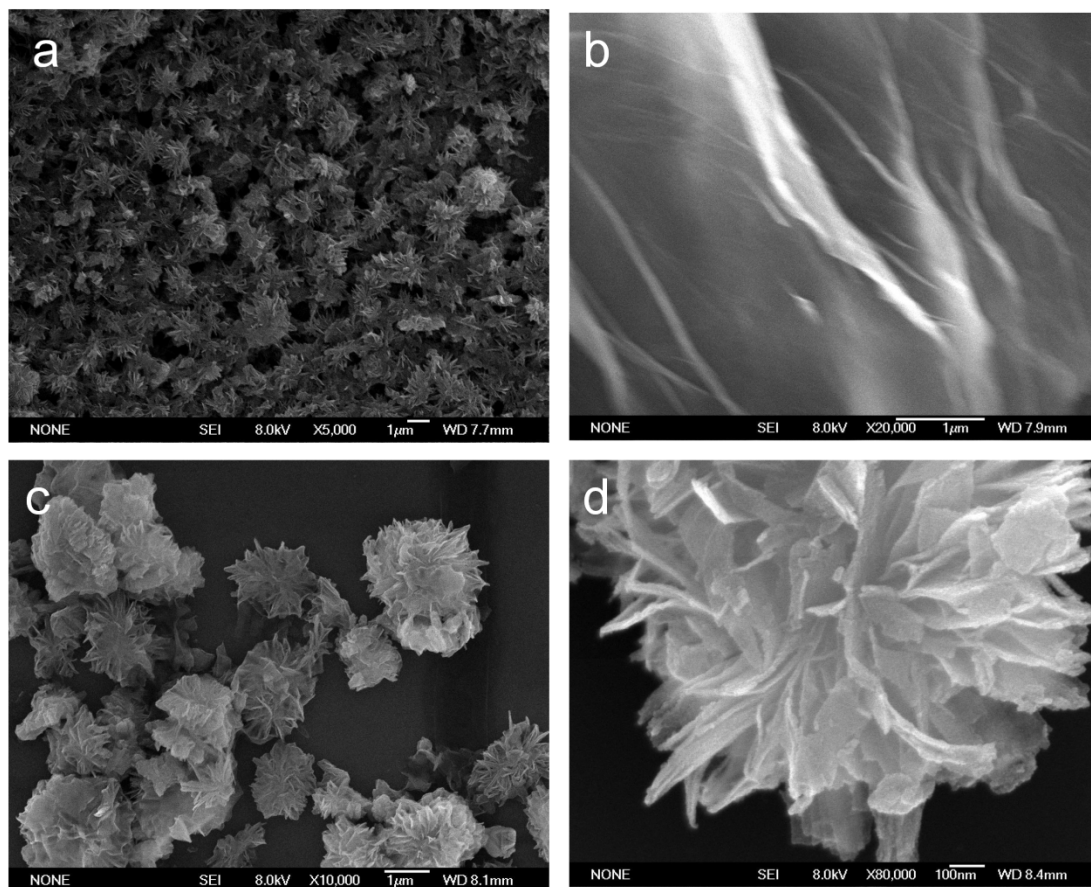


Fig. S1. SEM of (a) p-TiO<sub>2</sub>, (b) GO, (c) p-TiO<sub>2</sub>@GO, (d) Pt-TiO<sub>2</sub>@RGO

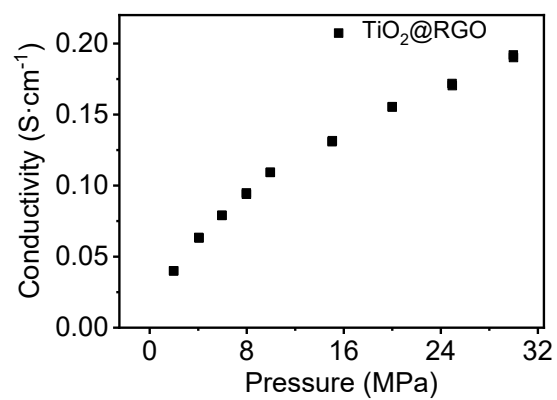


Fig. S2. The conductivity of TiO<sub>2</sub>@RGO

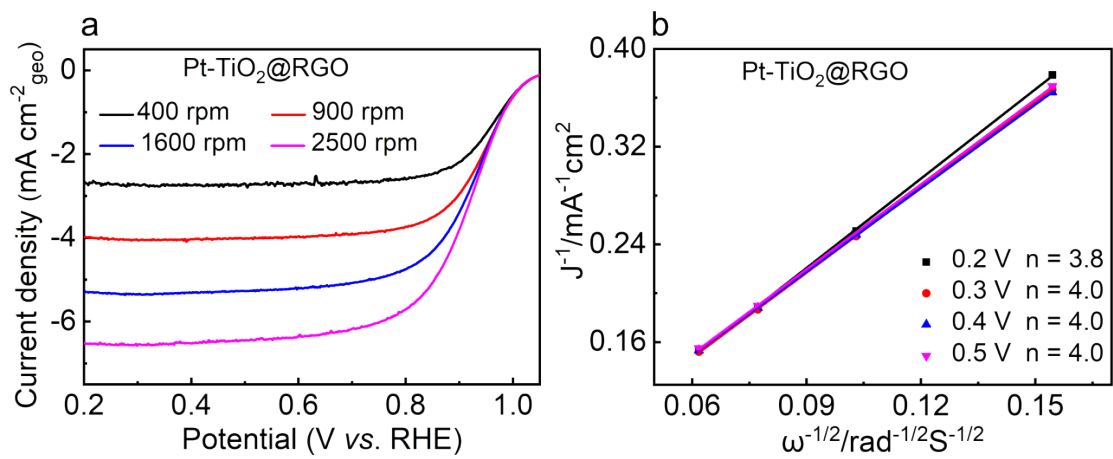


Fig. S3 (a) LSV curves of Pt-TiO<sub>2</sub>@RGO at different rotating rates in oxygen saturated 0.1 M HClO<sub>4</sub>. (b) The corresponding K-L plots and the calculated electron transfer number.