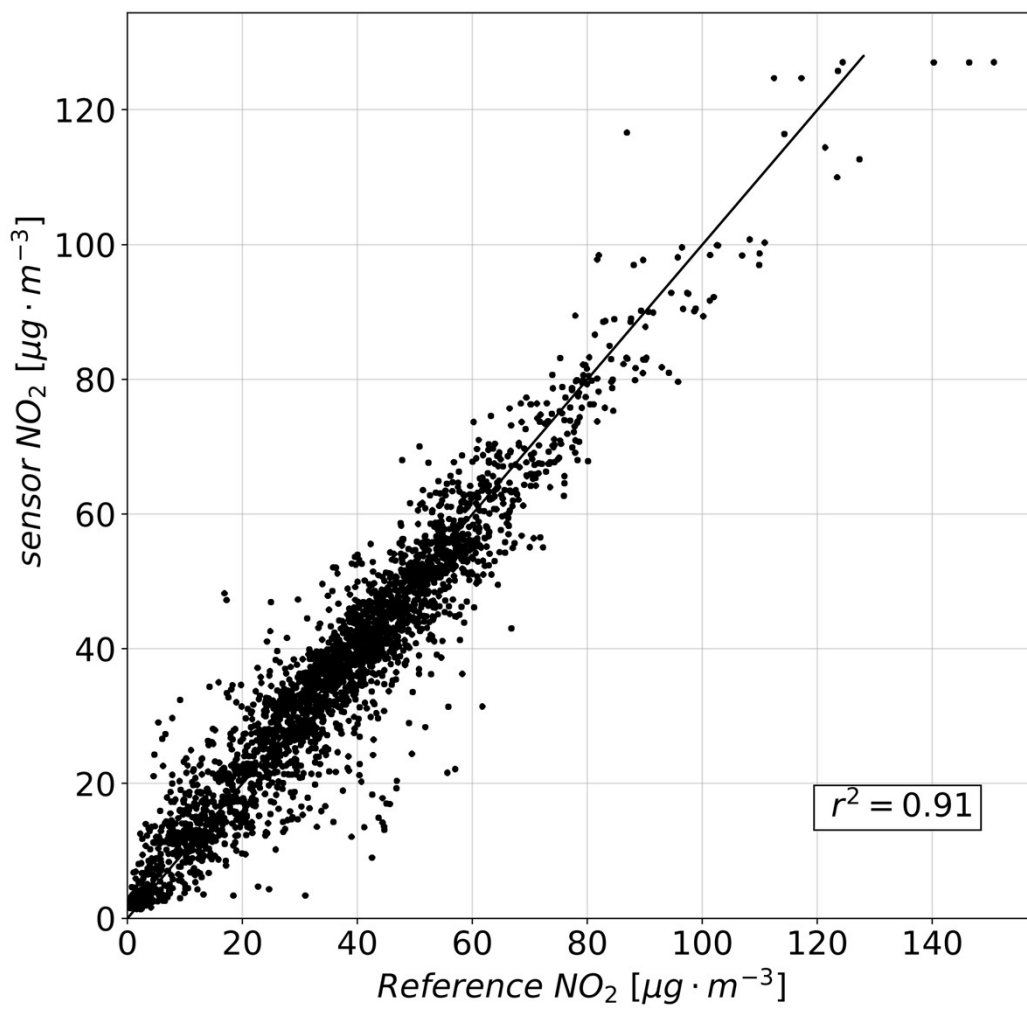
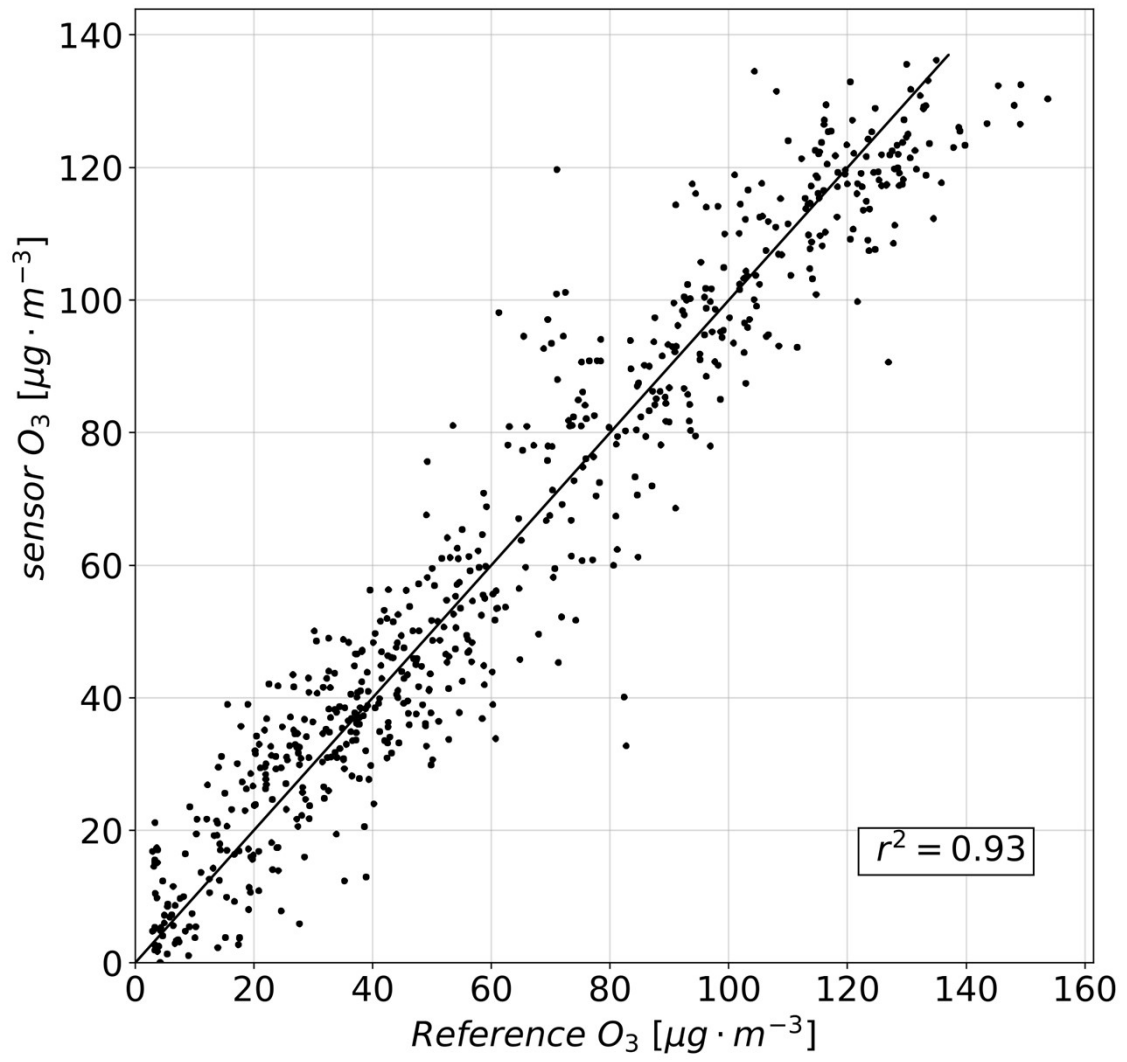


Supplementary Information





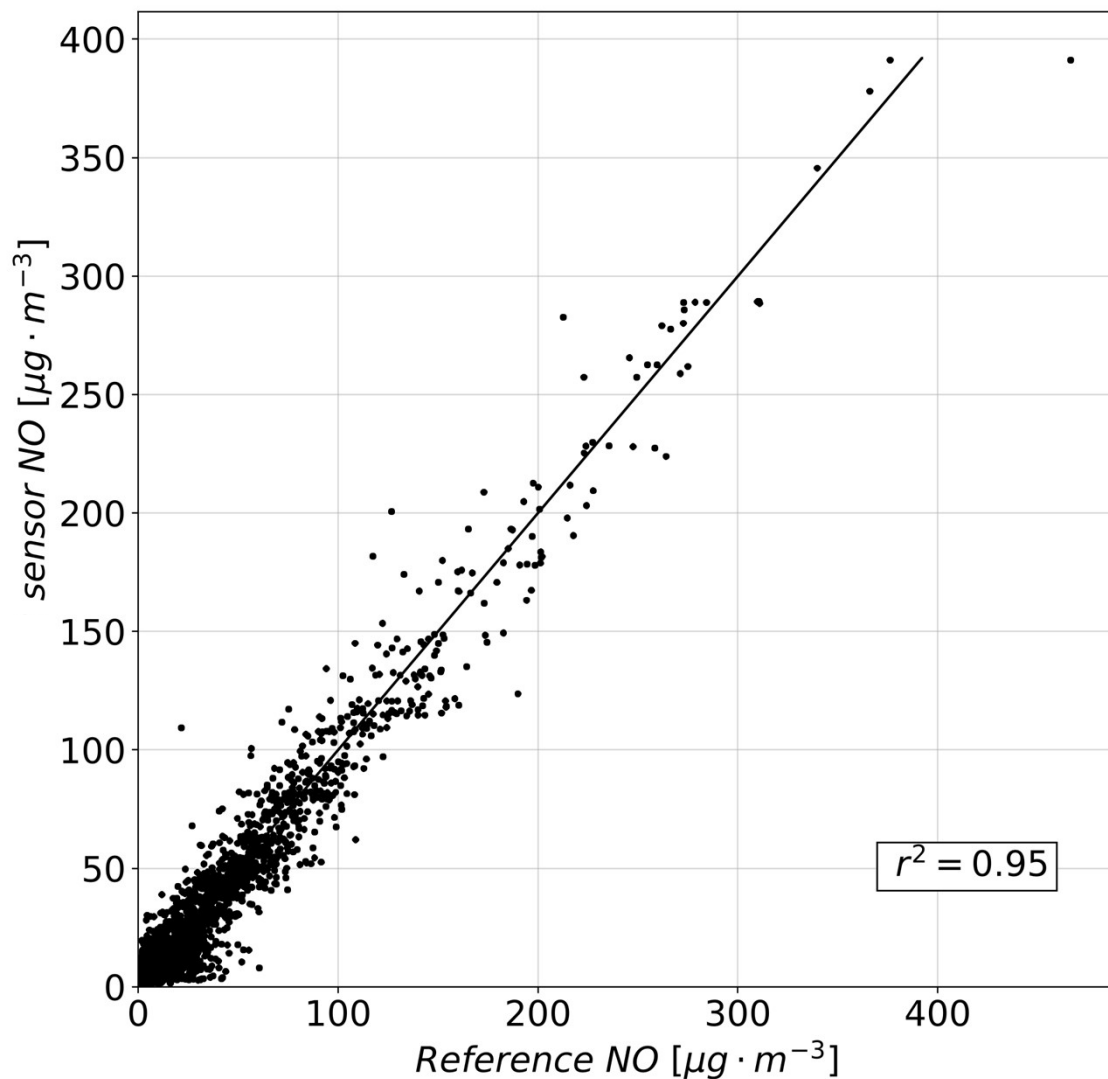


Figure S1 - Scatterplots of reference versus Low-cost sensors calibrated concentrations for the three air pollutants Coefficient of determination (r^2)

Here in Figure S2, the time series shows the daily mean concentrations from the reference urban background station and the different LCS's that rotated through the same location (PFR) during the measurement period. It shows the low-cost sensor network captures similar temporal variations and effectively differentiates between pollution levels and seasonality trends with the AQM.

Daily means NO₂ LCS vs. Reference

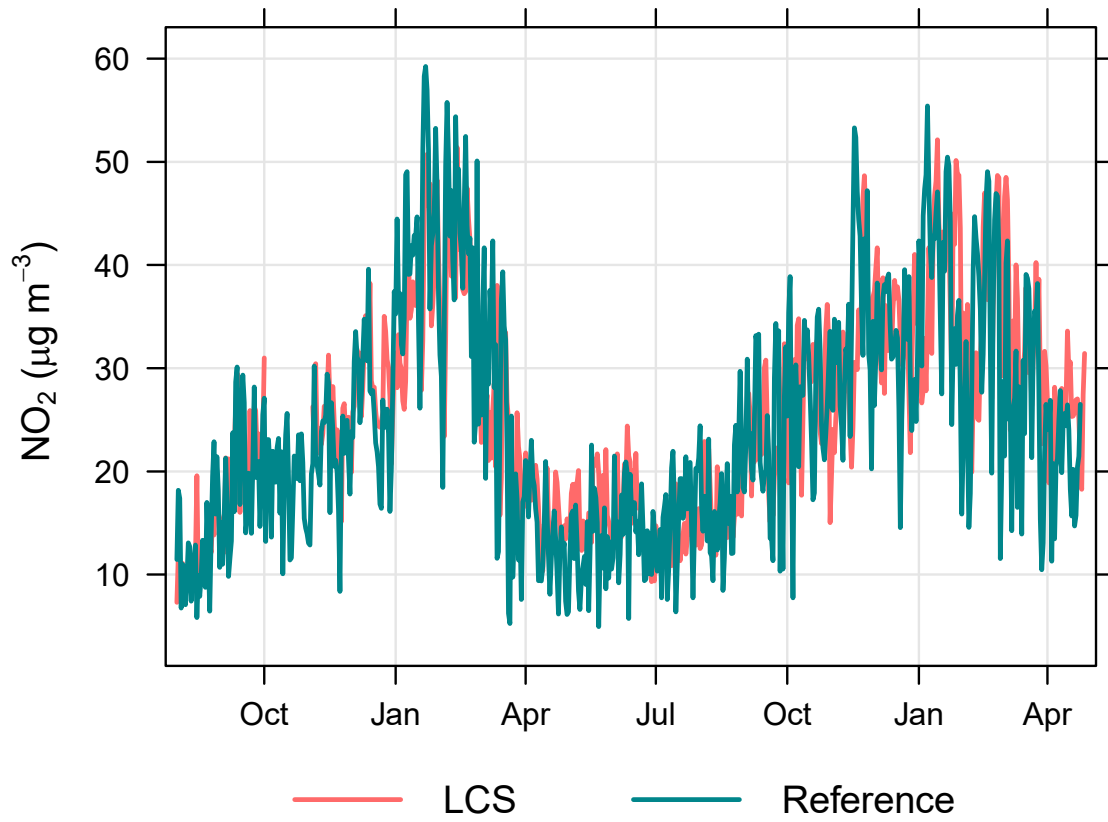


Fig. S2. Temporal variations of daily mean NO₂ concentrations in Parco Ferrari, Modena as measured by the LCS and the reference (AQM)