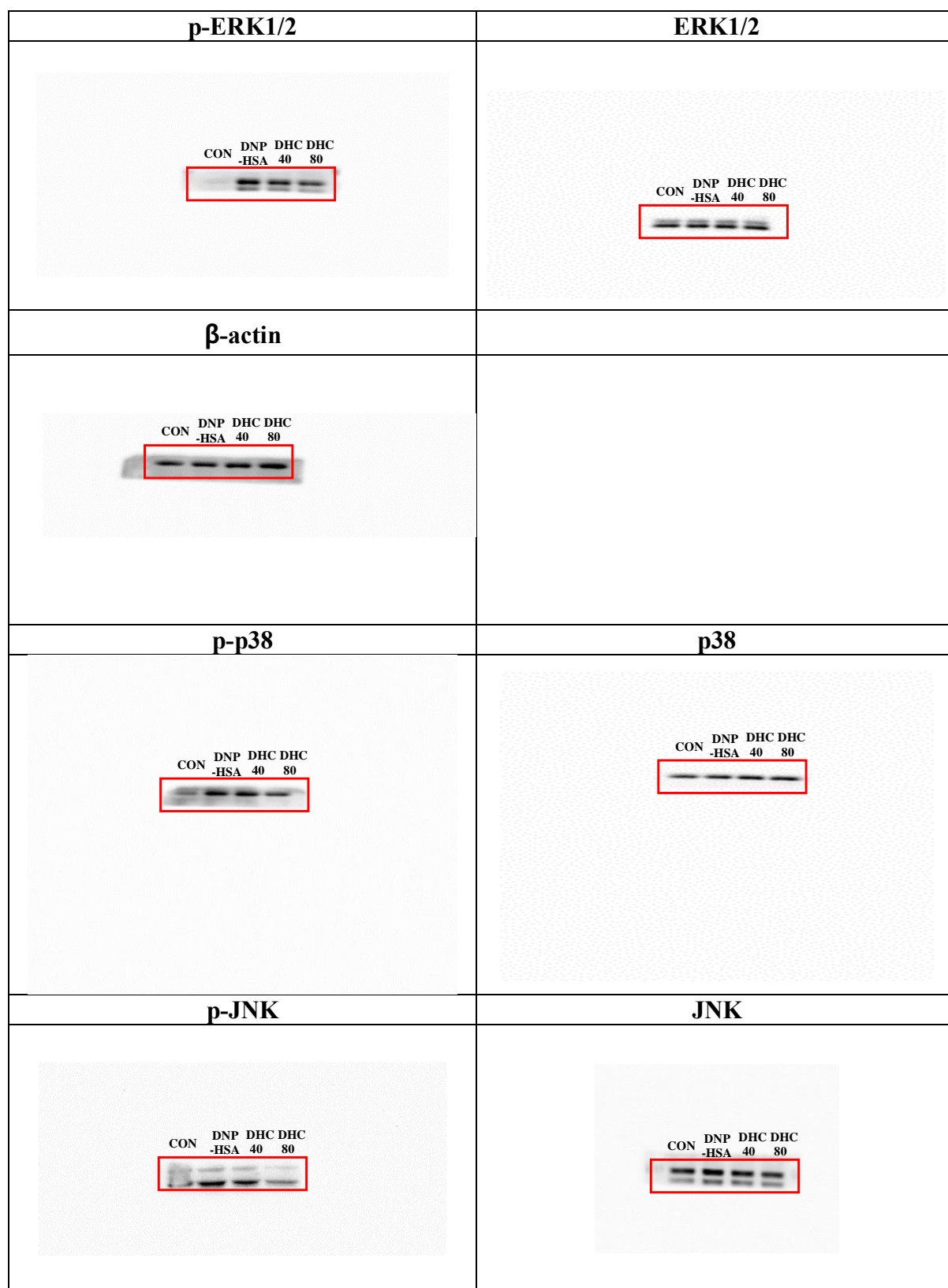
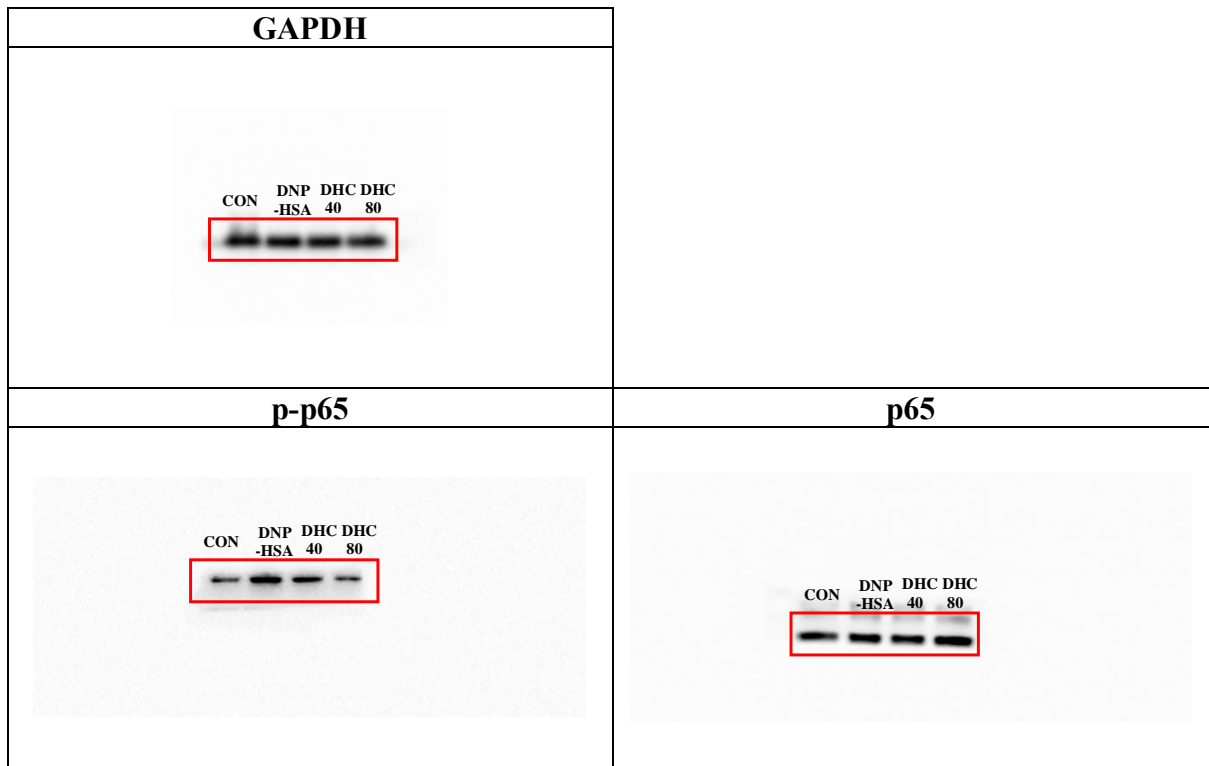


## Western blotting images

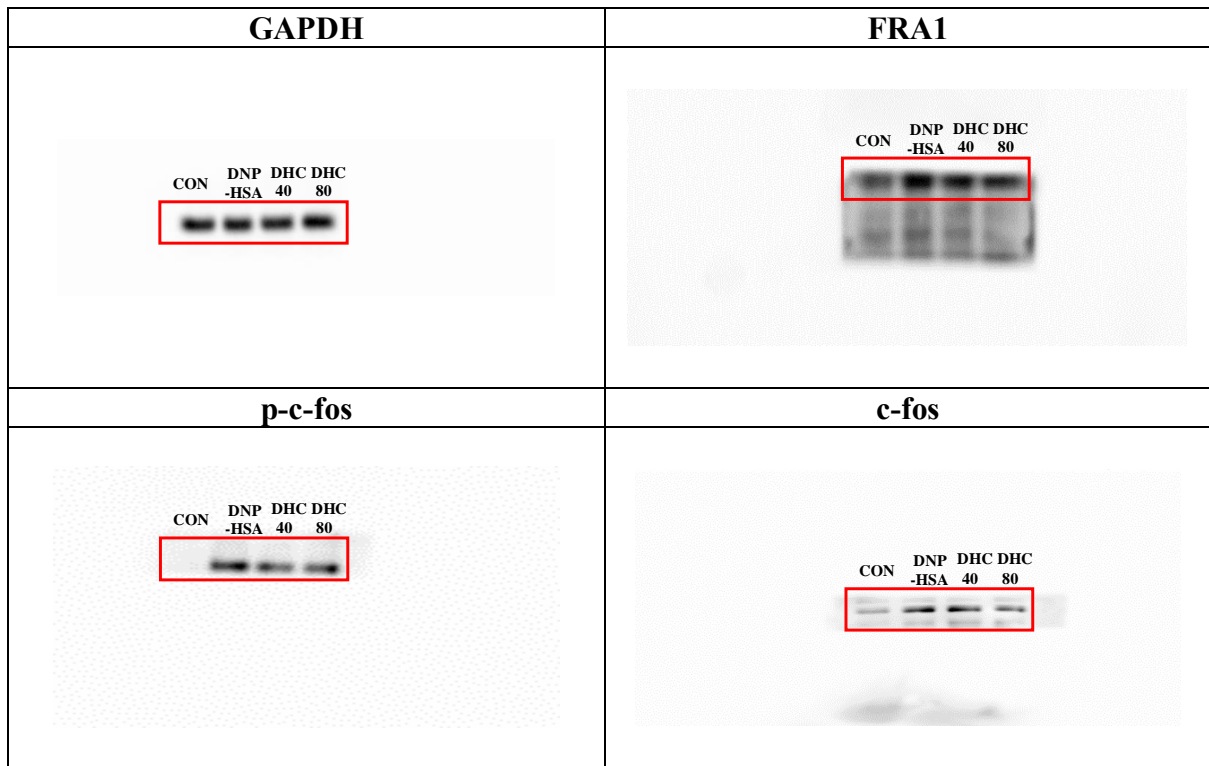
Figure 2A



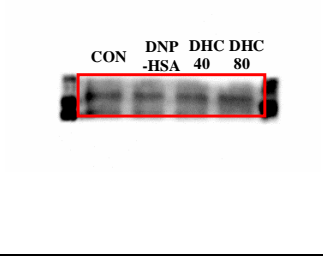
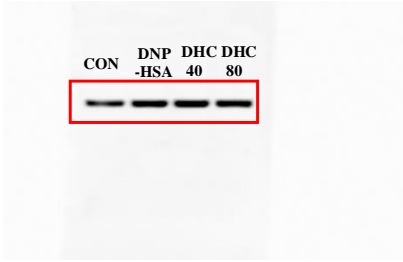

**Figure 4A**



**Figure 4C**



**SUPPLYMENTARY**

<b>SIRT1</b>	<b>AC-lysine</b>
 <p>Western blot analysis of SIRT1 protein levels. The blot shows four lanes: CON, DNP-HSA, DHC 40, and DHC 80. A red box highlights the bands, which appear to decrease in intensity from left to right, indicating a decrease in SIRT1 levels with increasing DHC treatment.</p>	 <p>Western blot analysis of AC-lysine protein levels. The blot shows four lanes: CON, DNP-HSA, DHC 40, and DHC 80. A red box highlights the bands, which appear to increase in intensity from left to right, indicating an increase in AC-lysine levels with increasing DHC treatment.</p>
<b>GAPDH</b>	
 <p>Western blot analysis of GAPDH protein levels. The blot shows four lanes: CON, DNP-HSA, DHC 40, and DHC 80. A red box highlights the bands, which appear to be of similar intensity across all lanes, indicating that GAPDH levels are consistent and serve as a loading control.</p>	