

Anti-obesity effects of *Laminaria japonica* fucoidan in high-fat diet-fed mice vary with gut microbiota structure

Xueqian Zhang^{a,b}, Ying You^a, LiLong Wang^a, Chunqing Ai^{a,c}, Linjuan Huang^{b,d},
Songtao Wang^e, Zhongfu Wang^{b,d,*}, Shuang Song^{a,c,*}, Beiwei Zhu^{a,c}

^a National Engineering Research Center of Seafood, School of Food Science and Technology, Dalian Polytechnic University, Dalian 116034, China

^b College of Food Science and Technology, Northwest University, Xi'an 710069, China

^c National & Local Joint Engineering Laboratory for Marine Bioactive Polysaccharide Development and Application, Dalian Polytechnic University, Dalian 116034, China

^d Shaanxi Natural Carbohydrate Resource Engineering Research Center, College of Food Science and Technology, Northwest University, Xi'an 710069, China

^e National Engineering Research Center of Solid-State Brewing, Luzhou Pinchuang Technology Company Limited, Luzhou, 646000, China

* Corresponding author at: College of Food Science and Technology, Northwest University, Xi'an 710069, China (Zhongfu Wang), School of Food Science and Technology, Dalian Polytechnic University, Dalian 116034, China (Shuang Song).

E-mail addresses: wangzhf@nwu.edu.cn (Zhongfu Wang), songs1008@163.com (Shuang Song).

Table S1. Compositions of experimental diets.

Ingredients	Normal chow diet	High fat diet
Crude fiber	4.90%	1.60%
Crude protein	20.18%	19.50%
Crude fat	4.60%	17.20%
Crude ash	6.60%	4.00%
Moisture	10.00%	8.80%
Calcium	1.14%	1.20%
Phosphorus	0.91%	0.82%

Feed ingredients: corn, soybean meal, wheat bran, wheat flour, fish meal, salt, calcium bicarbonate, vitamin mix, mineral mix, amino acid, etc.

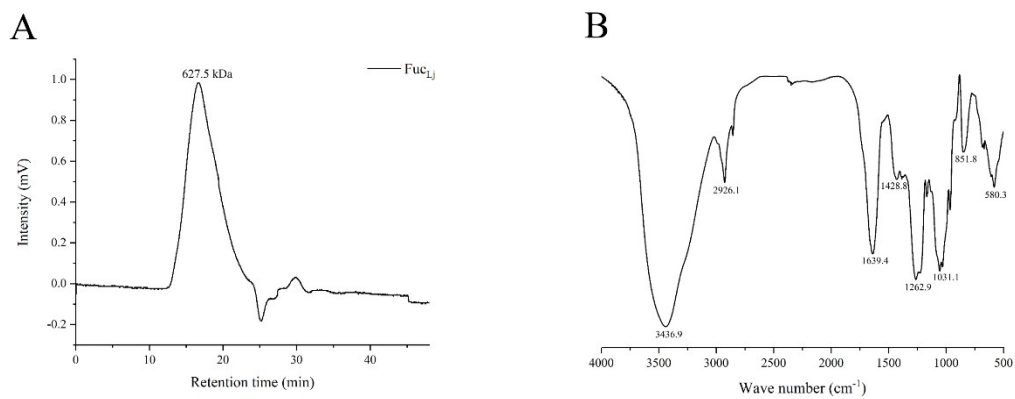


Fig. S1 Chemical characterization of Fuc_{Lj}: (A) average molecular weight of Fuc_{Lj}, (B) FT-IR spectra of Fuc_{Lj}.

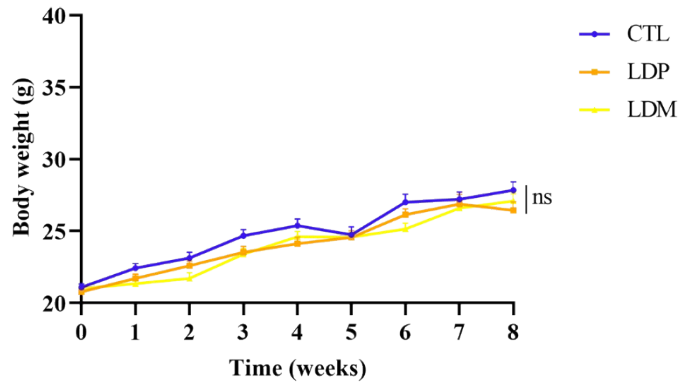


Fig. S2 Body weight of mice before high-fat diet treatment. ns: no significant difference.