

Supplementary Information

Effects of oxidized rice bran protein induced by rancidity on the hepatic function in mice

Fang Li^{a,b}, Xiaojuan Wu^{a,b}, Wei Wu^{a,b} *

^a *College of Food Science and Engineering, Central South University of Forestry and
Technology, 498 Southern Shaoshan Road, Changsha, Hunan 410004, P. R. China*

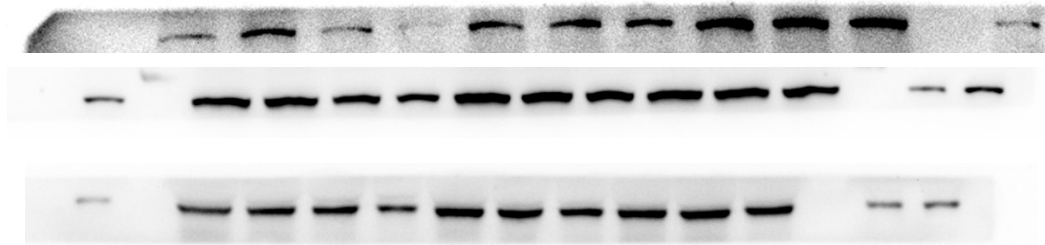
^b *National Engineering Research Center of Rice and Byproduct Deep Processing, 498 South
Shaoshan Road, Changsha, Hunan 410004, P. R. China*

Table S1 Ingredient composition and nutritional content of diet

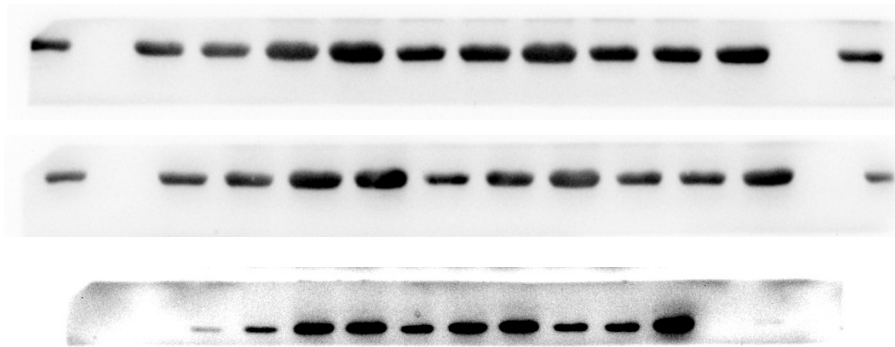
Composition	
Total energy Kcal/kg	3500
Protein g/kg	225
Fat g/kg	106
Carbohydrates g/kg	669
Fiber g/kg	50
Mineral mixture g/kg	38
Vitamin mixture g/kg	8
Methionine + cystine g/kg	8
Lysine g/kg	13.9
Choline chloride g/kg	1.3

Figure S1

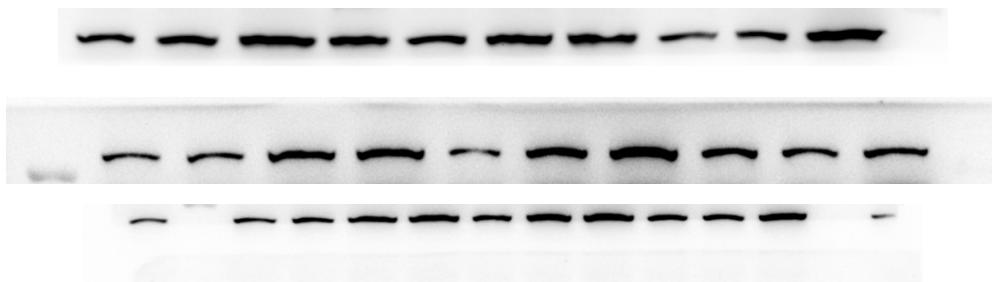
Western blot images for key factors involved in Nrf2/Keap1/ARE and NF- κ B in the liver.



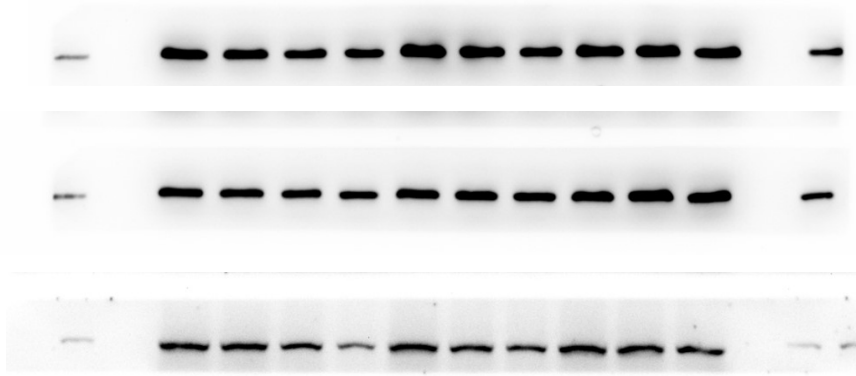
PI3K



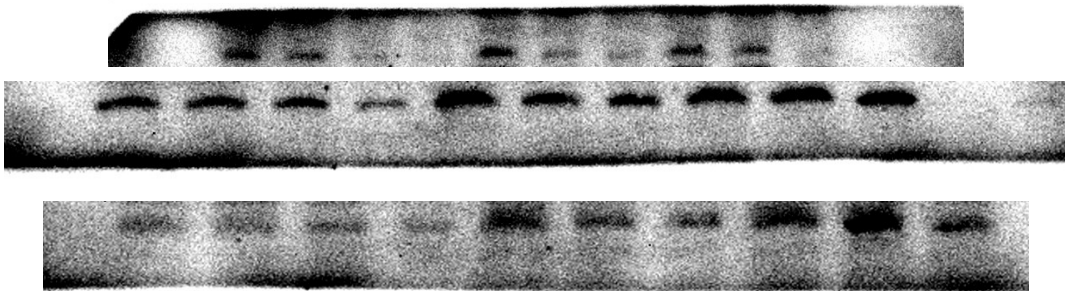
GSK-3 β



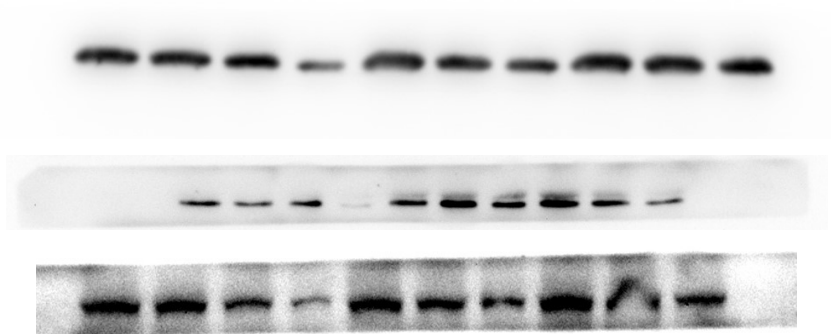
Keap1



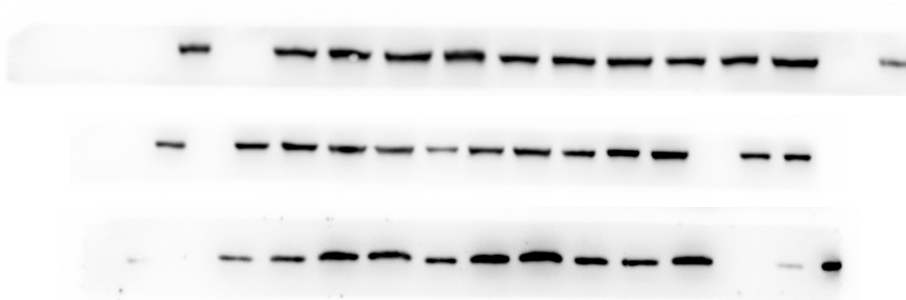
Nrf2



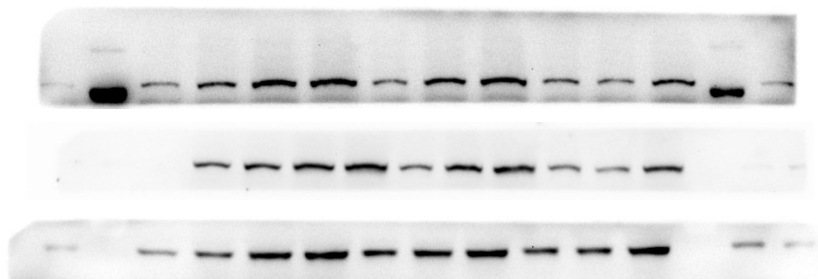
GPX-3



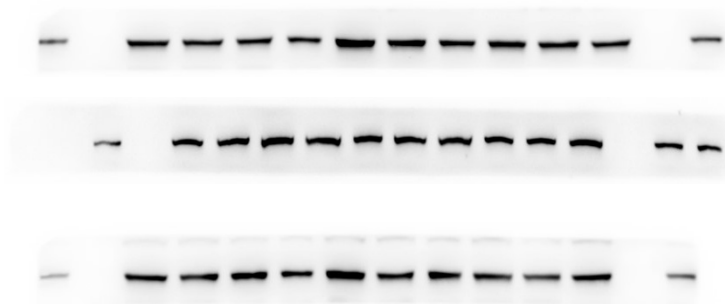
GPX-4



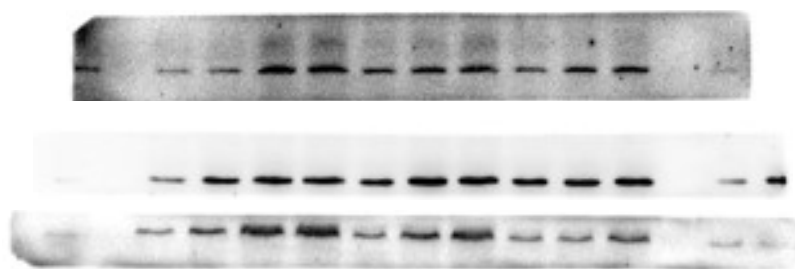
HO-1



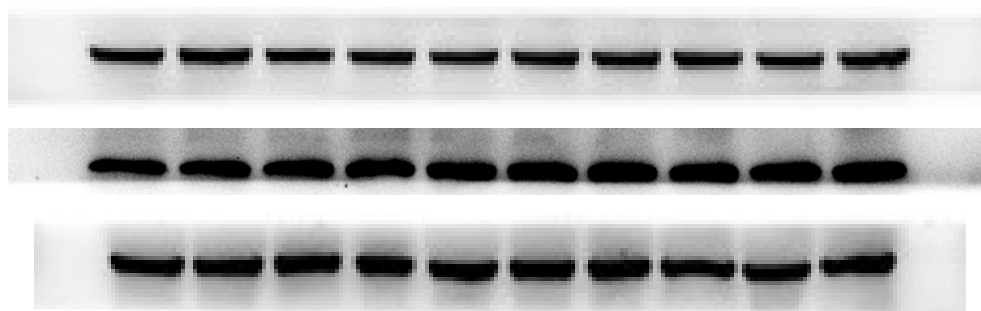
p-p65



p65



MyD88



GAPDH