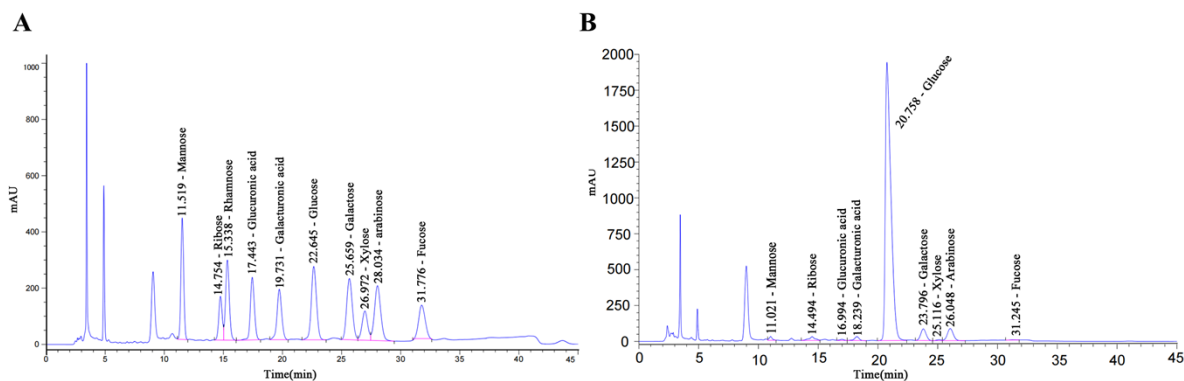


## Supplementary Material

### 1 Supplementary Data



**Supplementary Figure 1.** Ion chromatogram data of monosaccharide composition. (A) Standard curve. (B) Sample determination curve.

#### 1.1 Supplementary Tables

##### Supplementary Table 1. Primer sequences

Gene	Forward	Reverse
AMPK	5'-CCTGAAGCCAGAGAACGTGT	5'-TGGCGATCCACAGCTAGTTC
SREBP-1	5'-GCGTTTCTACCACTTCAGGTTTCA	5'-ACCCTGCGAAGTGCTCACAA
PPAR- $\alpha$	5'-CACCTCTCTCCAGCTTCCA	5'-GCCTTGCCCCACATATTTCG
TLR4	5'-TGAGGACTGGGTGAGAAATGAGC	5'-CTGCCATGTTTTGAGCAATCTCAT
NLRP3	5'-GTGGAGATCCTAGGTTTCTCTG	5'-CAGGATCTCATTCTCTTGATC
TNF- $\alpha$	5'-ATCGGTCCCAACAAGGAGGA	5'-TCCGCTTGGTGGTTTGCTAC
IL-1 $\beta$	5'-TGCTGTCTGACCCATGTGAG	5'-GTCGTTGCTTGTCTCTCCTTG
ZO-1	5'-TAATGCCCGAGCTCCGATG	5'-CCATCTTTGGACCGATTGCTG
Occludin	5'-GCCATACATGTCATTGCTTGGTG	5'-TTGGGAGCCTTGACATCTTGTTTC
GRP41	5'-CCCCTTGACAGGCCACATAG	5'-TGGTATGACTGCCTTGAGCG

GRP43	5'-GGCTGTGGTGACGCTTCTTA	5'-CATAGAGGAGCCGGGATTGC
Actin	5'-CGCGAGTACAACCTTCTTGC	5'-ATACCCACCATCACACCCTGG

---

**Supplementary Table 2.** Composition of crude polysaccharides.

Sample	Polysaccharides	Protein	Flavone	Ursolic acid	Saponin
Content(%)	71.01	3.28	6.63	1.45	2.87

---