

Figure S1 Effects of vitamin D pretreatment on cisplatin-induced weight changes in mice.

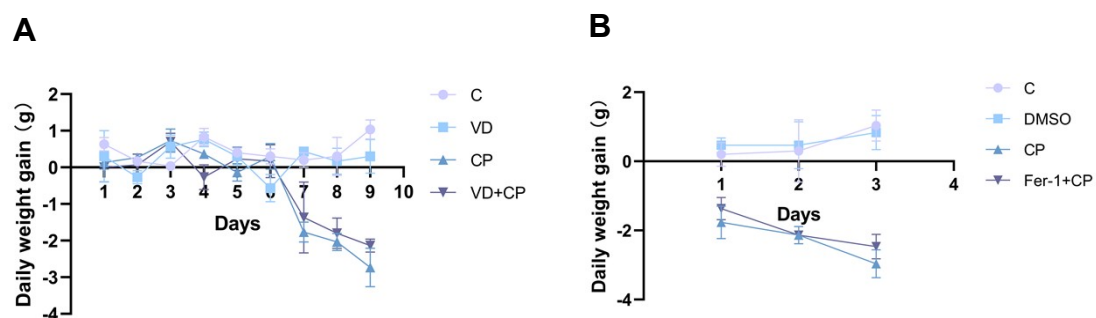


Fig. S1 Effects of vitamin D pretreatment on cisplatin-induced weight changes in mice. (A) Daily changes of body weight in mice (n=12). (B) Daily changes of body weight in mice (n=9). Abbreviations: C, control group; VD, vitamin D₃ group; CP, CP group; VD + CP, vitamin D₃ + CP, DMSO, DMSO group; CP, CP group; Fer-1 + CP, Fer-1 + CP group.

Figure S2 Dosage determination of vitamin D₃.

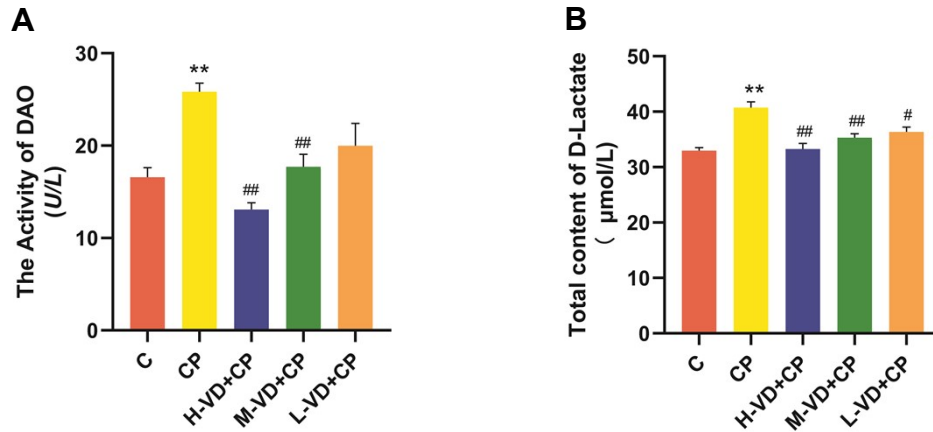


Fig. S2 Dosage determination of vitamin D₃. (A) DAO levels in mouse serum (n = 6); (B) D-Lactate levels in mouse serum were measured by ELISA (n = 6). Data are presented as the mean ± SEM. ***P* < 0.01 compared to the C group, #*P* < 0.05, ##*P* < 0.01 compared to the CP group. A value of *P* less than 0.05 was regarded as statistically significant. Abbreviations: C, control group; CP, CP group; H-VD + CP, 2800 IU/kg/Day vitamin D₃ + CP; M-VD + CP, 1400 IU/kg/day vitamin D₃ + CP group; L-VD + CP, 700 IU/kg/day vitamin D₃ + CP group.

Figure S3 Vitamin D levels in mouse serum.

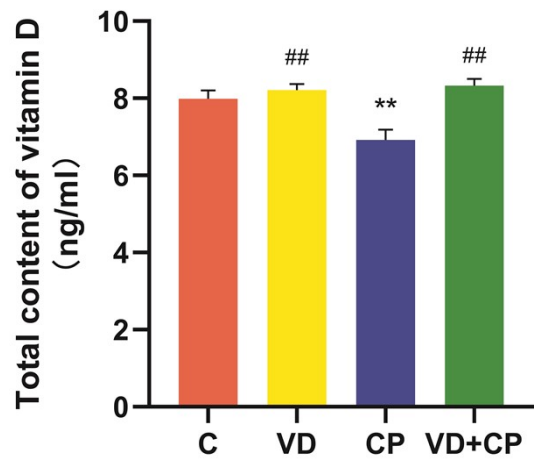


Fig. S2 Vitamin D levels in mouse serum. Data are presented as the mean \pm SEM ($n = 6$). ** $P < 0.01$ compared to the C group, ## $P < 0.01$ compared to the CP group. A value of P less than 0.05 was regarded as statistically significant. Abbreviations: C, control group; VD, vitamin D₃ group; CP, CP group; VD + CP, vitamin D₃ + CP group.