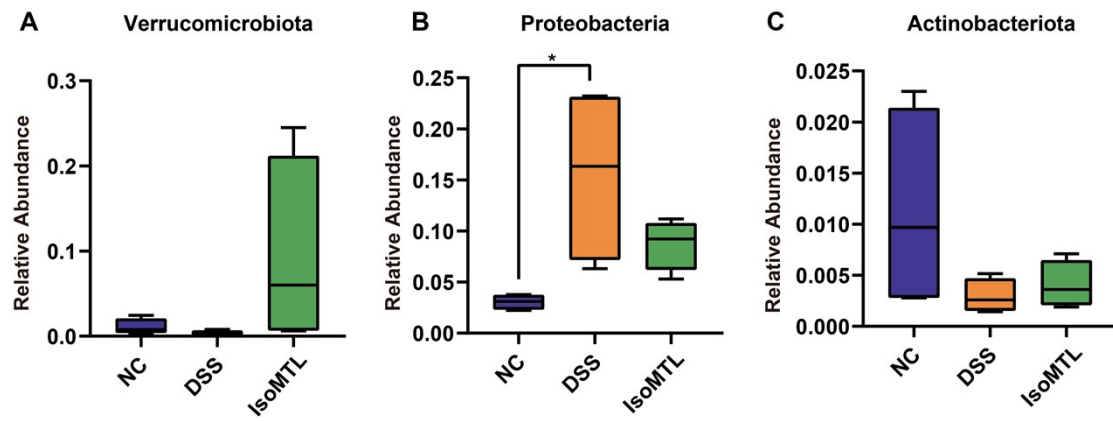


**Figure S1.** Isomaltulose improved the pathological changes of DSS-induced UC.



**Figure S2. Isomaltulose modulates the relative abundance of gut microbiota.** (A-C) Relative abundance of *Verrucomicrobiota*, *Proteobacteria* and *Actinobacteriota* in the three groups. Compared to the indicated group, \*P < 0.05.

**Table S1. The primers sequences used for RT-PCR reaction.**

<b>Target gene</b>	<b>Primer sequence</b>
GAPDH	F: GGTTGTCTCCTGCGACTTCA
	R: TGGTCCAGGGTTTCTTACTCC
IL-10	F: TCCCTGGGTGAGAAGCTGAAGAC
	R: CACCTGCTCCACTGCCTTGC
IL-17	F: TGATGCTGTTGCTGCTGCTGAG
	R: CACATTCTGGAGGAAGTCCTTGGC
ZO-1	F: CTGGTGAAGTCTCGGAAAAATG
	R: CATCTCTTGCTGCCAAACTATC
Occludin	F: TGCTTCATCGCTTCCTTAGTAA
	R: GGGTTCACTCCCATTATGTACA
Claudin-1	F: AGATACAGTGCAAAGTCTTCGA
	R: CAGGATGCCAATTACCATCAAG

F: Forward; R: Reverse